



silhouette





the Ca^{2+} concentration in the cytosol is increased by the addition of a small amount of CaCl_2 .

It is concluded that the Ca^{2+} concentration in the cytosol is not only increased by the addition of CaCl_2 but also by the addition of Ca^{2+} from the endoplasmic reticulum.

The authors are indebted to Dr. J. H. van Wagon for his critical reading of the manuscript.

REFERENCES

- BRADY, R. O., and H. H. GIBSON. 1961. The effect of calcium ions on the rate of protein synthesis in the rough microsomes of rat liver. *J. Biol. Chem.* 236: 1025-1028.
- BRADY, R. O., and H. H. GIBSON. 1962. The effect of calcium ions on the rate of protein synthesis in the rough microsomes of rat liver. *J. Biol. Chem.* 237: 1025-1028.
- BRADY, R. O., and H. H. GIBSON. 1963. The effect of calcium ions on the rate of protein synthesis in the rough microsomes of rat liver. *J. Biol. Chem.* 238: 1025-1028.

RECEIVED

Manuscript received 10/15/64; in final form 11/15/64.

REVISED

Manuscript received 12/15/64; in final form 1/15/65.

REPRINTS

Reprints of this article are available from the publisher.

NOTES

1. This work was supported by a grant from the National Science Foundation.

REFERENCES

- BRADY, R. O., and H. H. GIBSON. 1961. The effect of calcium ions on the rate of protein synthesis in the rough microsomes of rat liver. *J. Biol. Chem.* 236: 1025-1028.
- BRADY, R. O., and H. H. GIBSON. 1962. The effect of calcium ions on the rate of protein synthesis in the rough microsomes of rat liver. *J. Biol. Chem.* 237: 1025-1028.
- BRADY, R. O., and H. H. GIBSON. 1963. The effect of calcium ions on the rate of protein synthesis in the rough microsomes of rat liver. *J. Biol. Chem.* 238: 1025-1028.

NOTES

1. This work was supported by a grant from the National Science Foundation.

REFERENCES

- BRADY, R. O., and H. H. GIBSON. 1961. The effect of calcium ions on the rate of protein synthesis in the rough microsomes of rat liver. *J. Biol. Chem.* 236: 1025-1028.
- BRADY, R. O., and H. H. GIBSON. 1962. The effect of calcium ions on the rate of protein synthesis in the rough microsomes of rat liver. *J. Biol. Chem.* 237: 1025-1028.
- BRADY, R. O., and H. H. GIBSON. 1963. The effect of calcium ions on the rate of protein synthesis in the rough microsomes of rat liver. *J. Biol. Chem.* 238: 1025-1028.



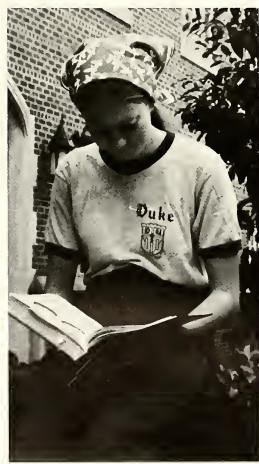


silhouette

1976

agnes scott college
decaturn, georgia 30030
volume 73

| | |
|----------------|-----|
| contents | |
| introduction | 1 |
| student life | 14 |
| students | 48 |
| administration | 120 |
| organizations | 164 |
| advertisements | 212 |
| conclusion | 224 |



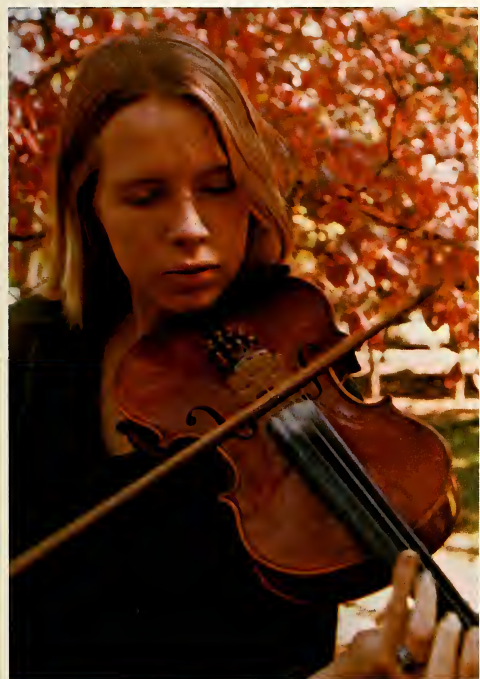


shaping a self . . .

being on your own . . . aspirations
. . . reading . . . beginning to
understand the complexity
of the human . . .

studying outside in the sun . . .
ideas . . . staying after class
to talk with a professor . . .
concerts . . . petting
the campus cats . . . new
interests . . .









abandoning the soft, easy
answers . . . a jumble of
thoughts focused into a paper
. . . scaling the heights in
presser practice rooms . . .
the fragility and power
of freedom . . .







stretching and flexing the mind

and the spirit . . .

attending lectures

. . . the loneliness of an

all-nighter . . . trying to be

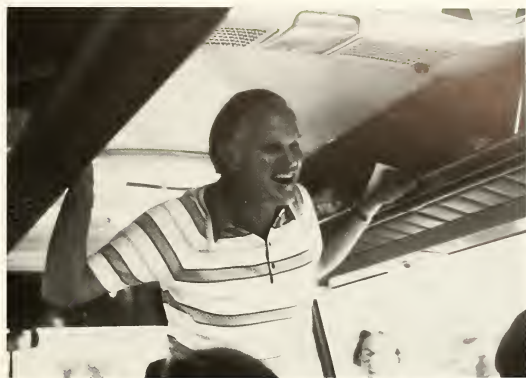
at two meetings at once . . .

the satisfaction of solving

a difficult equation

. . . developing imagination . . .





contemplation . . .
experimentation
leads to theory . . . anonymous
spirits . . . a walk to class
after the rain . . . jovial
professor . . . a clear view . . .





heavy thinking . . . working
hard, playing hard . . .
throwing a first
lopsided pot . . . growing older
and becoming better . . .







student life

blue jean days, sunday-dress nights . . .
trying to get everything done . . . laundry
and lectures . . . crowded
calendar pages . . .
washing hair . . . lading punch . . . all aid
in shaping of self,
growing together in student life



black cat:

the exciting end of orientation

an-ti-ci-pa-tion . . .
sophomores giving freshmen
a devil of a time . . . hall
fashion shows . . . jack-o-lanterns
at the bonfire . . . singing and
laughing . . . jiminy cricket . . .
costumes . . . white-faced
cats . . . freshmen triumphant
at tug of war . . . plenty of
picnic food . . . olive and
friends: new twist to the
production's theme . . . hot
apple cider . . . blue
hamburger signs for the
dance . . . the sparkle of
ballroom lights . . . last but
not least: the lazy lawn party . . .



lectures:

added dimension to the liberal arts education

pauline tompkins' legacies of a liberal arts education
fabulous foursome — return of the guarneri string quartet
... guenter kopcke on greek archeology . . . I.W.Y.
with elizabeth janeway . . . focus on faith — stimulating
discussion with the insights of mrs. elisabeth leitch and dr.
ol winn . . . indian import: dance by devi . . . joseph
blotner on william faulkner . . . saluting black history
week — an assist from gwendolyn brooks . . . a special
lecture to observe the bicentennial . . . the writers'
festival . . . a variety of events, a wealth of enrichment
...





sophomore parents' weekend:

giving moms and dads a taste of campus life

... coffees and teas ... "discovery" and the dolphin
club ... taking parents to classes ...





a talk by mrs. woods . . .
partying in the gym
. . . administrative panel
with president perry . . . good
food and good company for
luncheon and dessert . . .



internships:

the off-campus learning experience

. . . barbara — 2 days a
week at the high museum
. . . registrar's office:
byward — "organization" . . .
keeping track of acquisitions
and loans . . . gallery
labels . . . storing and
shipping . . . exciting contact
with *objets d'art* . . .

jill . . . silkscreens for
advertising at rich's . . .
practical art through
the shadow program . . .
original designs
used throughout the city . . .
taking advantages of the
opportunities offered
in atlanta . . .





brandon

. . . one day a week at the
historical society . . .
learning curator-ship
. . . help from career
planning . . . research
. . . quilts, paintings,
costumes, and medals to
catalogue . . .

. . . betsy and cheryl . . .

poli sci in the flesh

. . . learning about the
legislature . . . seminars . . .
practical experience . . .
a capitol idea . . .



presser:

"god of the marching centuries"

wednesday convocations . . .
freshman class meetings . . .
organ music — practice makes
perfect . . . lectures and
concerts . . . glee club
rehearsals . . .









dana:

behind the arches — creative minds at work

wandering through the gallery . . .
sketching and painting . . . play
rehearsals . . . building flats,
collecting props . . . chipmunks
in the courtyard . . . art history,
philosophy, and theatre class-
rooms . . . missing that pretty
willow by the door . . . the
spiralling staircase . . .
. . . the basement: go od place
to go when you have time to kiln
or print . . .



campbell:

test tubes and microscopes

titration and dissection . . .
8 x 10 glossies of your favorite
stars — courtesy of the bradley
telescope . . . labs monday
through thursday . . . little
jungle in the greenhouse . . .
animals for biology and psychology
. . . library and museum on
second floor . . . going to open
house at the observatory . . .
computing statistics for
psychology lab . . .
researching topics for
senior seminar . . .





buttrick:

four classes on mwf

kicking coke machines . . .
note from a hth; mail from home
from a mole at home . . . picking
up the latest issue of creative loafing
. . . checking bulletin boards . . .
lectures . . . notes . . . tests
. . . the delight of turning in
the last paper of the quarter . . .





buttrick:

. . . stopping in the bookstore for
a few items . . . appointments with
the dean . . . professors who ignore
bells . . . cashing a check before
the weekend . . . pick up the weekly
schedule . . . 90 minutes in the
language lab? . . . the 8:30 line-up
for exams . . .





hub:
now in living color

relaxing and unwinding . . . new
snack bar . . . diverse sounds
from hub parties to coffee house . . .
padding of ping pong . . . the
hustle and bump to the juke box . . . focal
point for meetings and
discussions . . . retreat for
day students . . . keys at all
hours of the morning . . .
master pieces of art for
sale . . . our own aquarium
of colorful paper fish . . .

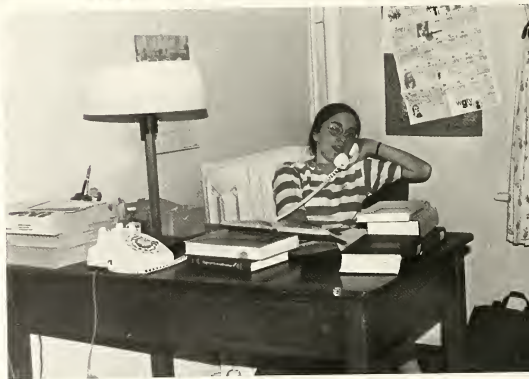




dorms:

home, sweet home

friendly chats in person
and by phone . . . desks piled with
books . . . cluttered shelves . . .
souvenirs from summer study abroad
. . . pots, plants, and plants in pots
. . . surprise birthday parties . . .
the late movie and popcorn . . .
sunny verandas . . . the charm of an
older dorm . . . the modern efficiency
of the new . . .







dining hall:

long lines of hungry scotties

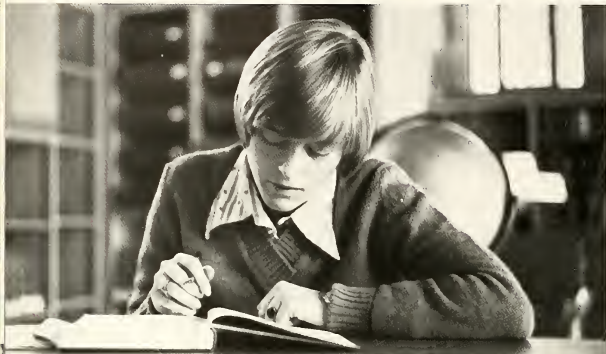
trying to diet . . . leftovers: variations on a theme . . . lingering over coffee . . . "happy birthday" serenades . . . eskimo pies . . . sign-ups and ticket sales . . . screaming sacrifices borne to the alumnae pond . . . luncheon with the board of trustees . . .



library:

the least favorite place to spend a friday night

the browsing shelf . . . trying to decipher library of congress numbers . . . really stacked . . .
blessed quiet . . . a good place to study (or sleep) . . . reading magazines . . . research . . .
nerding it . . . rearranging the couch cushions for a nice slouch . . .



gym:

exercise your tension away!

"mornin' glories" . . . jogging . . . bulls' eyes and
holes-in-one . . . hockey practice . . . hearing the dance
group's accompaniment . . . tennis everyone . . .
shooting baskets . . . dips in the pool . . . pennies and
whistles . . .



summer study

the glee club tour,
study in england,
and
a desert biology trip

• • •





... desert biology trip:
westward-ha with wistrand
... collecting a class
menagerie ... sand, sun,
and skunks ... cacti and
coyotes ...
really roughing it ...



. . . the glee club at
the vienna symposium . . .
6 countries, 3 weeks.
. . . otto's autobus . . .
practices and concerts . . .
mr. mathews' last
suitcase . . . not having
the freedom to sing in
czechoslovakia . . . the
national anthem: proudly
hailing the fourth
of july . . . the exchange
of culture through song . . .





six weeks of study in
scotland and england . . .
enjoying devon cream teas
. . . cathedrals and a
different kind of "tube"
. . . thatched roofs . . .
sing-along-with-mike-
hour . . . buying oxford
sweatshirts . . . climbing
the cliffs . . . playing
soccer on the front
lawn . . . eating lunch at
lincoln's inn with
mr. hurstfield . . . learning
more than just elizabethan
social history . . . rowing
on lach loman . . .
history lessons
brought to life . . .

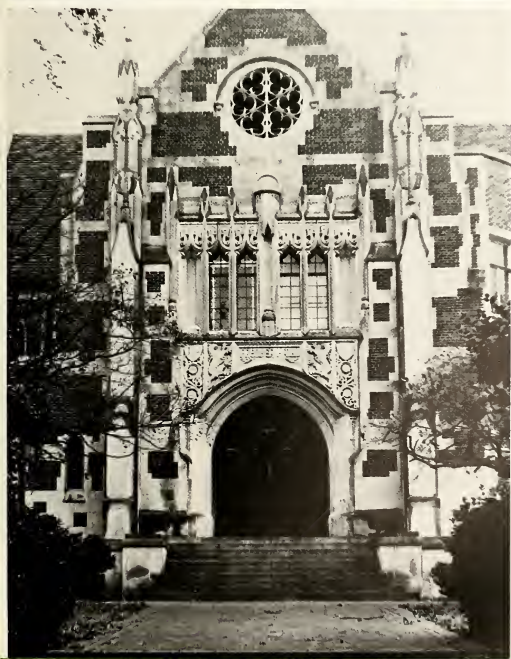


agnes scott college:

independent liberal arts college for women

offers courses leading to bachelor of arts degree
... located in decatur, georgia ... metro atlanta
area ... economic, cultural, social, intellectual,
and recreational advantages (georgia tech) ...
continues to put faith in life of mind and
spirit and the liberating power of knowledge ...









classes

getting acquainted . . . challenges . . . that
first exam . . . and
the last . . . good natured
aggressive espionage . . . declaring
majors . . . class
meetings . . . shaping of self . . .
growing together as classes



lark cassell tadd
english — mathematics



gwendolyn lee davis
french — english



emily gillian dunbar
english



jennifer june rich
biology



alicia kennon snyder
history



mary elizabeth mc daniel
political science



mildred frazer kinnett
psychology



gay isley blackburn
art — english



ann wilson patton
mathematics



sarah phyllis de vane
economics



jean barrow williams
art



susan boyce conant
english



helen deborah harris
psychology



roslyn chandler fretwell
biology



kimberly jane erickson
psychology



julie kathryn jordan
art



cherry joy beysseance
history — political science



lucta johnson allen
spanish



lucy exum turner
biology



nancy mildred leosendale
sociology



ann louise galloway
english



shari lynn shufelt
biology — german



vernita arlinda bowden
chemistry



elizabeth rose meaney
classics



alice foster lightle
english — history



ann kathryn baxley
art history — english literature



elizabeth anne dameron
sociology



emily townsend rumph
art — mathematics



mary pauline crook
mathematics



joyce denise floyd
sociology — spanish



diana jon casten
sociology



angele willcox dunlap
mathematics



nancy elizabeth hopkins
english — french



elizabeth brandon brame
art



lea ann grimes
chemistry



rebecca shirley mc cullah
bible & religion — psychology



sherry huebsch druary
psychology



rachel dawn alexander
english — music



elizabeth holland boney
art — english



martha ann howell
economics



marianna elizabeth edwards
art



dorothy elizabeth roberts
art



katherine jean herring
art — french



evalyn mackay gantt
english



carolyn ann bitter
philosophy — political science



henrietta barnwell leland
economics



lynda weizenecker wilson
biology



karen white
english



barbara elaine clark
history



dorothy jeanne jones
biology



jane flowe brawley
bible & religion



elizabeth clark davis
english



linda anne duke
english



barbara ann williams
english



katherine wilkins akin
english



melissa ann mills
history



jacquelin kay smith
bible & religion



lisa evangeline banks
art history — english literature



alice elizabeth knight
english — theatre



denise carol westbrook
music



candice oslund
english — history



jill ann worthy
art



sarah elizabeth mc bride
history



jan brisendine funsten
psychology



sarah franklin echols
classics



elizabeth pedrick stall
biology



janet polk tarwater
sociology



virginia allan maguire
sociology



lori grace riley
psychology



dellphine denise brown
psychology



martha sue watson
history



beth barclay de wall
art



alice campbell cromer
bible & religion



jo lynn schellack
mathematics



anne english walker
classics



mary elizabeth sandell
psychology



laurie mc donald fite
history



elizabeth louise hornsby
english



mary crist brown
history



alethea dillard
biology — history



hope hood
sociology



martha cheryl kitchens
history



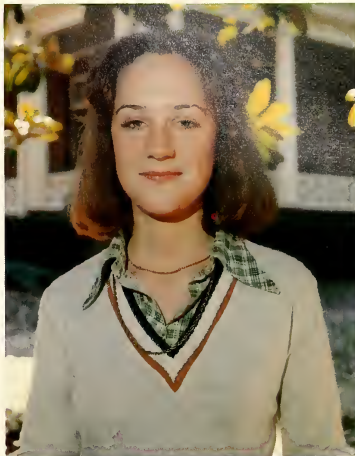
margaret elizabeth miller
psychology



karen lee close
art history — history



mary gemma jernigan
music



patricia louise pearson
english — history



martha jane hench
french



debra ann mc bride
german



harriett ellis graves
mathematics



patricia karen lockard
economics



marjorie maddin hunter
french



jane boyce sutton
english



pamela jane hamilton
economics



bonnie jaye pedersen
economics — mathematics



sue frances diseker
english



ann reece turner
music



martha marshall smith
french — history



laura eleanor underwood
history



jean collins sheffield
sociology



gloria diann perkins
psychology



janet lynn norton
english



pamela sue braswell
bible & religion



rebecca ann james
art — philosophy



christine diane metz
history



diana leigh lipscomb
biology



alexandra demetrios coclin
economics



kathryn gwen bireley
psychology



lucille carolyn burch
biology



jane elizabeth maas
art



jonoise mc gehee morehead
music — voice



win anne wannamaker
biology



georgina caridad hernandez
spanish



deborah jean huband
english — history

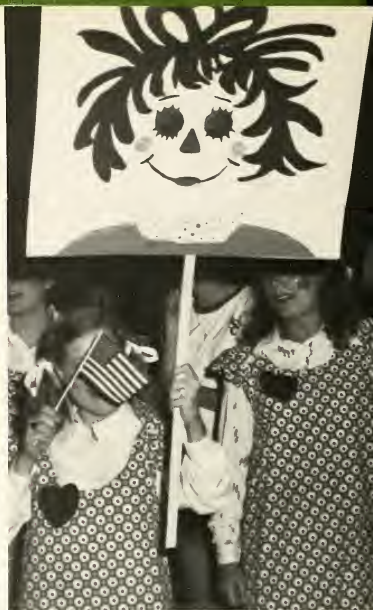
senior investiture:
officially gaining seniority





the end in sight . . .
parents at breakfast . . . feeling
nostalgic . . . the dignity of
academic gowns . . . the weight
of the mortar board . . . part
of a tradition . . . commemorating
the nation's independence . . .
and ours . . . neither the
beginning . . . nor the ending . . .
signaling the final effort . . .







senior class:

the spirit of '76

seeming older . . .
 independent studies . . . job
 interviews . . . tests —
 GRE, MCAT, LSAT —
 and more tests
 . . . confi-
 dence . . . the sparkle of
 diamonds . . . knowing your
 professors well . . . making
 the most of the final
 year . . . capping to
 graduation . . . bright
 candles burning down to
 glowing embers . . .
 hozy futures in the
 distance, to be lighted
 by ambitious fires . . .



peggie miller, president;
 jane bravley, vice-president;
 martha smith, secretary-
 treasurer

juniors:
 more than
 half
 way there

lots of spirit . . . making
 friends with the crickets . . .
 no more p.e. . . . lots
 of energy . . . black cat
 production
 rehearsal . . . rehearsal . . .
 rehearsal . . .
 applause . . . courses you really
 want . . . welcoming transfers
 . . . black
 kitty award . . . junior
 jaunt in the spring . . . more
 than half way there . . .

eleanor mccain, vice president; melinda marris,
 president; lydia wilkes, secretary-treasurer.



ellen abernathy
 jasette alberts
 cindy alden
 ann alexander



renee anderson
 evelyn babcock
 mary anne barlow
 lydia maria bendeck





holly bennett
anne band
pat brewer
nancy burnham



barbara byrd
jasmene chay
christa cline
sharon callings



ann conrad
carol corbett
pat davis
renee davis

beauty marks . . .



dana dewitt
beth dascher
yinka edun
pat fishel



kandace fitzhugh
lynn halden faley
sylvia foster
jane fraley



elaine francisco
audrey grant
karen green
nancy guerra



martha hackl
susan hall
glenn hankinson
cindy hodges



suzanne hollaman



a mouth full . . .





egypt revisited . . .



frances holt
mary ihley
ceil jarrett
sue jinks



sheryl johanson
emma johnson
terri keeler
mary lambright

carole langston
kay lawther
melanie lenzmann
gloria lewis



marianne lyan
beth masan
pat mcwaters
lani meadar



right . . . or wrong . . . or . . .





julia midkiff



mylinda mitchell



lyall morris



marching toward . . .

melinda marris



deedee morton
jonet mushegan
beverly nelson
dana nichals

kathy oates
scotty o'kelly
fran oliver
anne paulin



susi pedrick
anne pesterfield
susan pirkle
robin ransbotham



colleen reno



sandra saseen



linda shearon



foot stamping hoedown . . .



black kitty capers . . .



tammy shell
sally shurley
nancy sisk
susan smith



bonnie stoffel
lynn summer
caraline swink
julia taylor



spirit tonight . . .

alice thomas
lois turner
valerie vreeland
frances wickes



owards tomorrow . . .





lydia wilkes
elaine williams
kay williams
lynn wilson



nancy wimbish
emily wingo
danna winters
karen bittenbender zauderer



a spirited menace . . .





junior jaunt:

a chance to
give

hustle and bustle of
creativity . . . macrame for
j.j.'s country store . . . baught
wishes for roses . . .
airplane rides . . . confectionery
goodies . . . talent show . . . creation
of surprising stars . . .
heyday of carnival
fun . . . benefitting our
community . . .



sophomores:

trying not to slump

giving advice to freshmen
and feeling worldly-wise . . .
major decisions . . . black cat
espionage . . . the student
directory . . . rings . . . winning
the scholarship trophy . . .
honor guard
at investiture . . . fulfilling
course requirements . . .
lots of work for sophomore
parents
weekend . . . beginning to take
some upper-level classes . . .
joining
more clubs . . . no longer
lowmen on the totem pole . . .

pannie burchenal, president, jennifer scatt,
treasurer; carrie rolander, vice president; judy
miller, secretary.



page airheart
grace allen
sarah arthur
jane ashcraft



judy bartholomew
janet blaut
marguerite booth
laura boyd





gena briley
beverly brown
catherine brown
mary brown



lynn buchanan
pannie burchenal
susan bursan
cindy camper



cathy carr



martha jane cates

one of the lucky ones who received a letter!



shirley chan

becky childress
winnie cho
kim cobble
kay cochrane



eugenia collins
dale collins
patsy cralle
theresa crane



cheral crutchfield
melissa curtner
betsy davis
cathie deuel



... checking out the bookstore's merchandise ...





doing the bump . . .

donnie devane
leigh dillon



jennifer driscall
barbara duncan



sue edwards
mary ellis



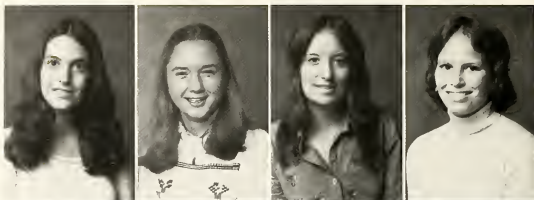
nilgün eren
sue fisher

patter extraordinaire . . .



kathy fitch
jan fleischman

betsy fletcher
anne getchell
cathy harris
sharon hatcher



carol hedrick
ann hester
mimi holmes
dee jahnsan



the intensity of study . . .

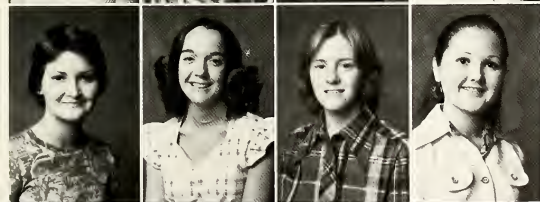




... one of the better convocations!



christy johnson
becki johnson
ginny johnson
sue jordan



jennifer judd
jonet kelley
susan kidd
linda kimbrough



marty knight
hope lamade
peggy lomberson
jano larmon



part of the dining hall decor . . .

sarah lindsay
mary lipscomb
martie lovvorn
mary ruth mcconnell



susan mccullough
laura mcdonald
mally mcdonald
cotherine mclauchlin

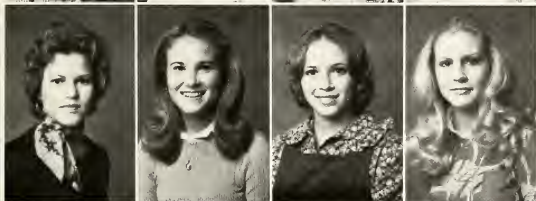


emmo mclemore
jeanie malmgren
kaki manning
sarah marshall





jennifer middleton
judy miller
lorraine mixon
jeanie moores



marlene munden
beth nease
lynn neely
paula k. newport



alice newton



mary jane narville

one meal after another . . .



kathleen o'brien

lynn oswald
carol overman
elaine pantazopoulos
paige patton



led by mcconnell and wistrond . . .

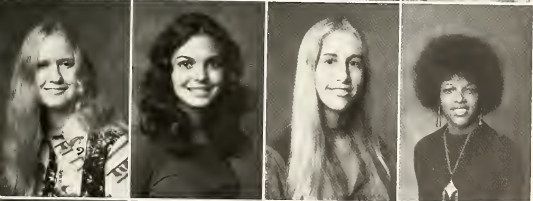




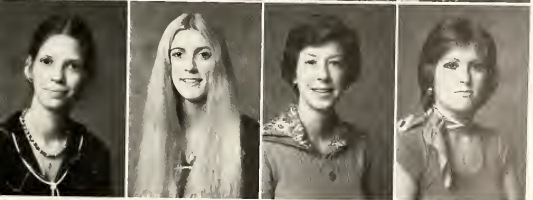
some new form of devil worship, perhaps? . . .



nancy peard
cindy peters
betty philips
sharon pittman



melinda porter
addie price
anne pulliam
sherri ray



madelyn redd
anne richardson
becca robinson
carrie rolander

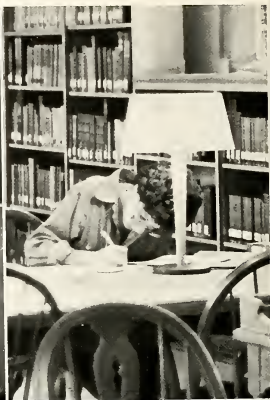
thelma ruddell
kathy schnittker



jennifer scott
elaine sheppard



another chaucer paper . . .



mary anna smith
susan smith
melody snider
susan speigel



sally stamper
paula starr
becky strickland
elizabeth stuebing



joyce tarbox
mary alice vasilas
cathy walters
betsy whitmire





elaine wilburn
miriam wilson
cathy winn
sally warkman



eleanor yancey
sue yonnone
safak yaprak
stephanie zipperer

hatstuff and two loyal supporters . . .



freshmen:
 settling into
 the routine

getting oriented . . . dessert
 with the faculty . . . rushing
 around for rush . . . meetings
 in maclean . . . top hats and
 green vests . . .
 eating too much . . . dating
 too much . . . the excitement of
 seeing the
 first academic procession . . .
 coming
 to know upperclassmen . . .
 grades that plummet
 in the fall . . . itching for key
 privileges . . . having a crush on
 a professor . . . being flooded
 with advice . . .

brenda jernigan, president; anne griner, vice
 president; mary reid, secretary-treasurer.



vi assaid
 nan atkins
 debbie ballard
 diane banyar



sue barefoot
 diane beaudain
 elizabeth belk
 melanie best

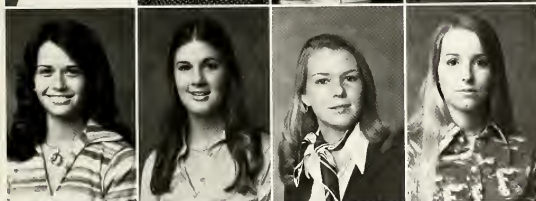




mariola bethencourt
susan bethune
maureen birtch
nancy bitter



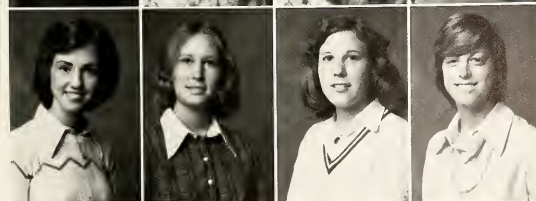
kathy boone
martha bowling
janet bradley
betsy broodwell



sue brock
hayden bullard
jonice byers
lisa cameron



angela carter
linda chupp
debbie clark
beverly collins



bess cox
suzanne cox
catherine crook
deborah ann daniel

julie daniel
ann denker
k. c. dacie
leslie doyle



steady hands and cautious movements . . .



fish dupont
sandra eichelberger
claudia elmore
nida emmans



marjorie farrell
angela fleming
juby fountain
sandy fawler





susan fuller
jeannine garbutt
mary beth gardiner
lesley garrison



susan gledhill
sharon glaver
susie gomez
katherine gowan



eleanor graham

10 minutes 'til the next class . . .



terri graves

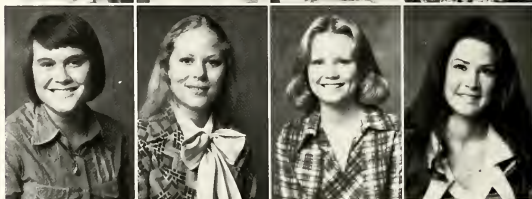


lisa griffin

anne griner
andrea groover
mary carter gross
kim gzechowicz



claire hall
karal hammer
katherine handley
katherine harris



lynda harris



amanda hicks



chirping along with the crickets . . .

cheryl hiers





helen hill

once upon a time . . .



elise holland



mory holliday
 donno hubbard
 jane hunt
 ellen hunter



lynn hutcheson
 carolyn isroel
 liz jenkins
 brenda jernigan



julie johnston
 anne jones
 tracey jones
 robin kessler

evelyn kirby
kay kirkland
rita kitts
denise koon



nan kouts



laurie kramer



just 382 pages to go . . .

karen kulick



deni lamb
anicia lane
jackie lawler
ginny lee





hoi chian lee
linda logan
genyne long
sandra lucas



karen margolis
carol mather
catherine mccann
linda mcoll



holly mcFerrin



linda mcInnis

and then he said . . .



melanie meadows

elizabeth merklein



leigh minor



double your pleasure
double your fun . . .



ann mock



rosalie nichols
rebecca ozburn
ann ozier
kitty ozier



tomi peavy
mari perez
nancy perry
carolyn pervis





diane petersen
laura peterson
peggy pfeiffer
anita plunkett



ellen poole



just another class meeting . . .

barbara propst

susan quarles
mary reid
donna richards
ginnie risher



hurry, hurry, hurry . . .



ginni rackwell
karen ragers
nancy ragers
mary romea



pam roukaski
shannon ruddell
danna sanson
lisa schiller

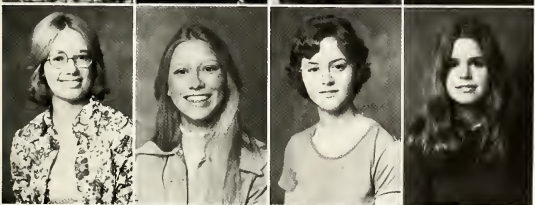




claire seymour
emily sheffield
crystal singleton
dacia small



nancy smith
oria spencer
diane spurlock
edith spurlock



paula starnes
renee stewart
donna stixrud
trudy stone

and this lasts till 5:30 . . .



susan sturkie
hope sullivan
allyson taylor
lauren taylor



after the tech game . . .



melinda tanner
liz terry
penny terry
tracey thomas



carol trussell
mary louise tucker
susi van vleck
patti velott





elizabeth wells
carl white
gayle white
mopsy widener



sara windham
chaille winston
lisa warthey
sara wright



donna wyatt

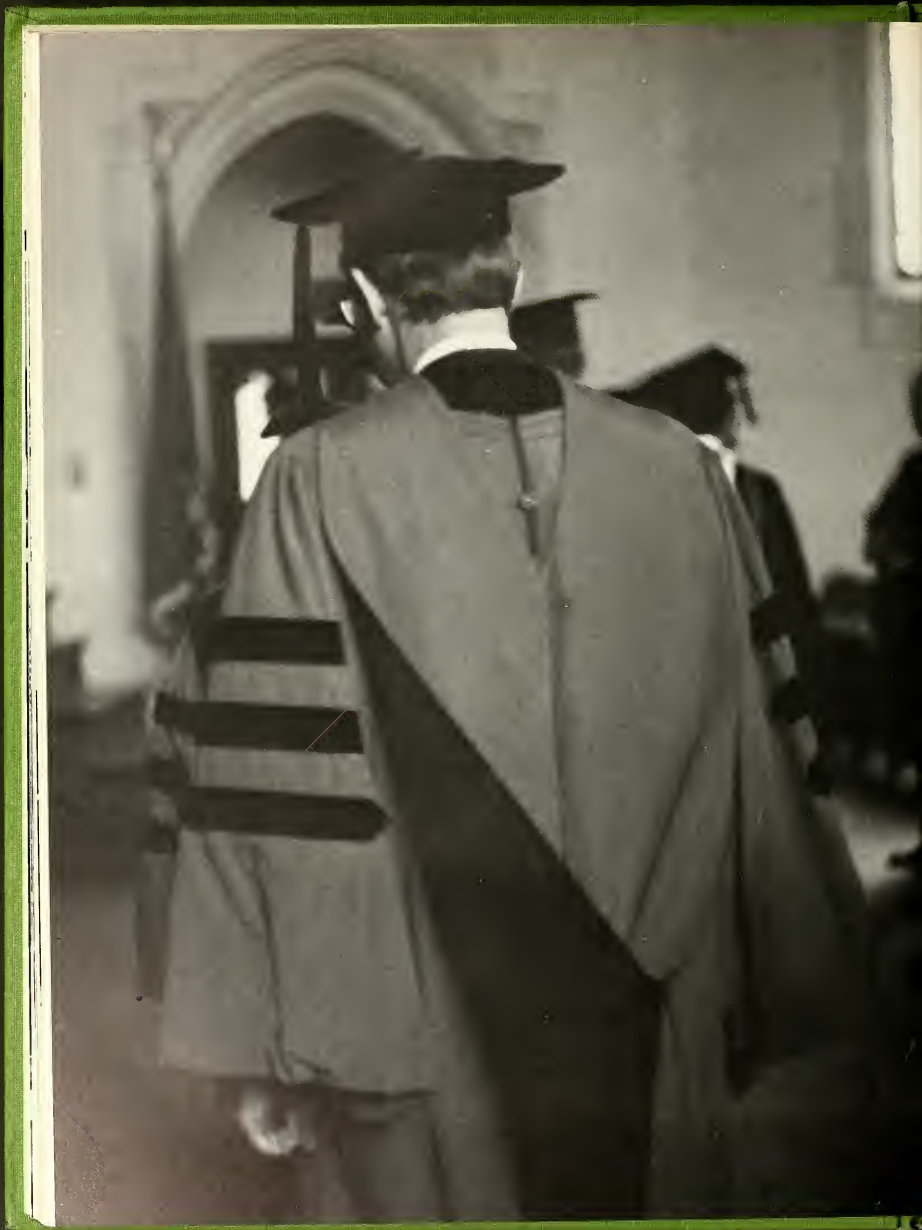
these legs were made for walking . . .

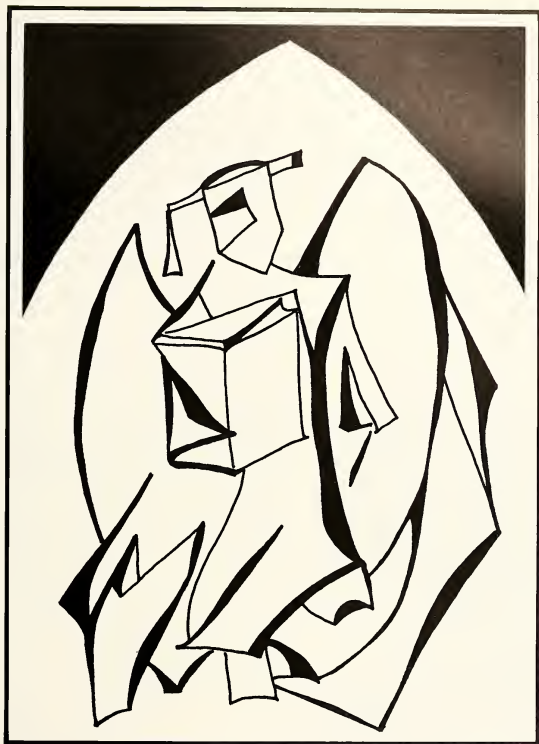


ann yarbaugh



anne zimmerman





administration

teaching, lecturing, paperwork
and planning . . . names on doors . . .
deans, directors, department chairmen
. . . food for thought and for eating . . . stamps,
textbooks, cash, and keys . . . help with
admission, postgraduate plans,
and everything in between . . .
movers and shapers . . .

art department:
graphics and ceramics

landslides of slides
in art history . . . brushes, clay,
plates, and charcoal . . .
afternoons
in the studio . . .
expanding the creative mind . . .

marie pepe, chairman
lee staven
carol miller
bab westervelt





bible and religion department:

the old and the new

a myriad of
beliefs . . . testaments
old and new . . . discussion
questions to end
all discussion
questions . . . fascinating
sidelines from mr.
chang

mary sheats, chairman
paul garber
kwai sing chang





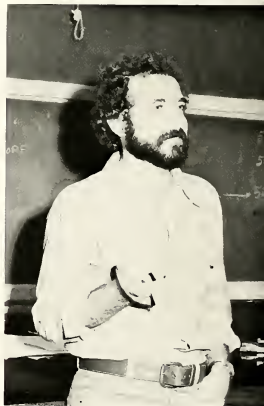
biology department:

the smell of formaldehyde

something fishy
going on in the
aquarium . . . cytology, ecology, zoology
. . . distinguishing
between mitosis and meiosis . . . flora
and fauna . . . witty exams . . .



gerald miller
thomas simpson
harry wistrand





nancy groseclose, chairman
sandra bowden
mary kelly



chemistry department:

mortars and pestles



lots of labs . . . jeans with
mysterious holes in them . . .
trying to figure out formulas . . .
bunsen burners of flaming
youths . . .



alice cunningham
marion clark, chairman
mary fox
alan white





classics department:

symmetry in language and culture

tragedy, comedy, history,
poetry . . . where latin isn't
dead . . . studying two of the
world's greatest cultures . . .
art and architecture . . .
sometimes laboring like
hercules . . .

elizabeth zenn, chairman
myrna young
gail cabisius

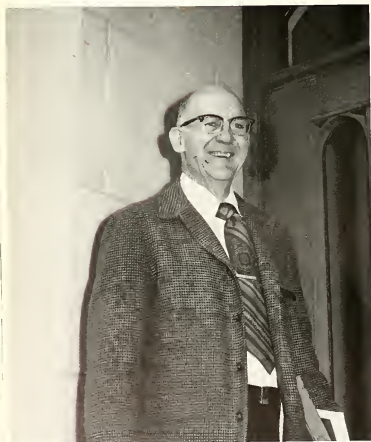
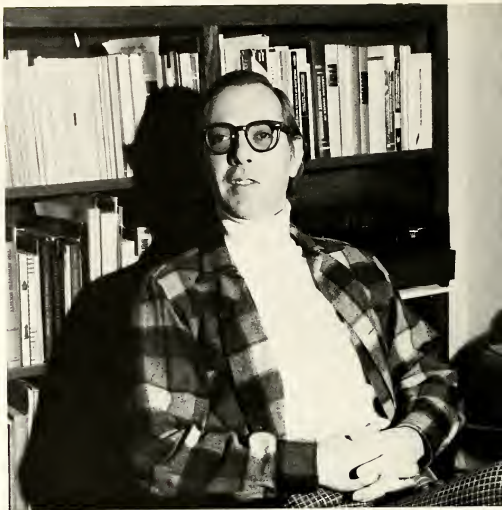


economics department:

reallocating resources

how money makes the world
go around . . . wages
and prices, profits and
losses . . . mr. weber's
technical
graphs . . . micro- and
macro- . . . the wall street
journal . . .

william weber, III
edward johnson
william vandiver

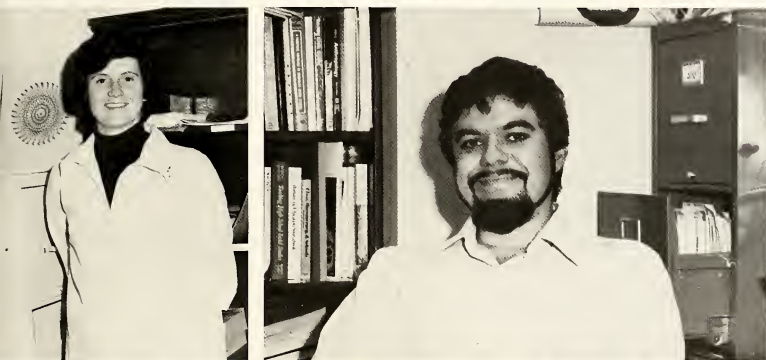


education department:

the three r's and more

analyzing
video-tapes . . . hooks and
pamphlets from the
lab . . . miss ammons' collection
of sally brown comic
strips . . . student teaching . . .

gue hudson
larry hepburn
marge ammons, chairman
part-time faculty not pictured:
rebecca fleischman
and nat anderson





margaret trotter
joallen bradham
jane pepperdene, chairman





english department:

words in the proper proportion

choice of old, middle,
or modern . . . discussion in
depth . . . reading lists and
writer's cramp . . . critics
and critical analyses . . .
the beauty of words . . .
communication of moods
through literature . . .
conveying time honored
values through poetry
and prose . . .



jack nelson
edward mcnair
lynn ganim

english department:



patricia pinka
linda woods
bona ball





french department:

vive la france

tapes . . . trying
to get that
accent just right . . . lage
dar, zola, and
existentialism . . . mrs.
hubert back from
france . . .

benedicte baucher
vladmir volkoff
frances calder
mary virginia allen,
chairman





french department:



huette kaiser
ben bao
chloe steele
claire hubert



german department:

auf wiederhören

oktoberfest . . . brecht,
goethe,
and kafka . . . polishing verbal
skills . . . "donkey's
bridges" . . . planning for
marburg . . .

ingrid wieshofer
viola g. westbrook
gunther bicknese, chairman



history and political science department:

cause and effect

a lot more than
dates . . . interesting
trivia . . . studying
causes, effects, and
prospects . . . well-traveled
professors sharing
their experiences . . .
gaining insights into the
present . . . through exploration
of the past . . .



penelope campbell
catherine sims
john gignilliat
david orr



michael brown, chairman
gus cochran
bell wiley
geraldine meroney



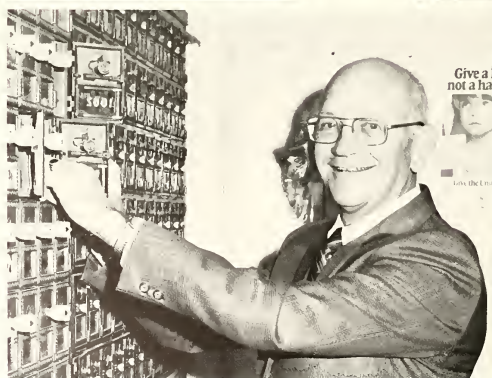
how government
works — or doesn't . . . polls
and statistics . . . when
international
relations is not three cousins
in canada . . . interning
at the legislature . . .

mathematics department:

proofs, problems and probability

knowledge you can
count on . . . ripy's believe
it: blackboards covered
with proofs . . . equations
that look like secret
codes . . . imaginary numbers
and unreal problems . . .

virginia leonard
robert leslie
saro ripy, chairman
ronald wilde





music department:

theory and practice

balancing precision and
feeling . . . mr. martin at
the organ . . . studying
beethoven, wagner,
and mozart . . .

ronald byrnside, chairman
janet stewart
raymond martin

music department:

jay fuller
john adams
theodore mathews





philosophy department:

expounding on the intangible

mr. behan teaching
through clouds of
cigarette smoke . . . why's
and therefore . . . logic:
not putting descartes
before de horse . . .

david behan
richard parry, chairman
linda cornett



physical education department:

shin guards and leotards

en garde with miss manuel . . . swimming and
dancing . . . balls for dribbling, labbying, valleying,
and putting . . . fighting flab . . .

marilyn darling
kay manuel
kate mckemie, chairman
ann mcconnell
ann salisbury





physics and astronomy
department:

exploring the universe

labs night or
day . . . calculating with
calculus . . . star and
planet gazing,
photography . . . a
date with the telescope . . .

george folsom
philip reinhart, chairman





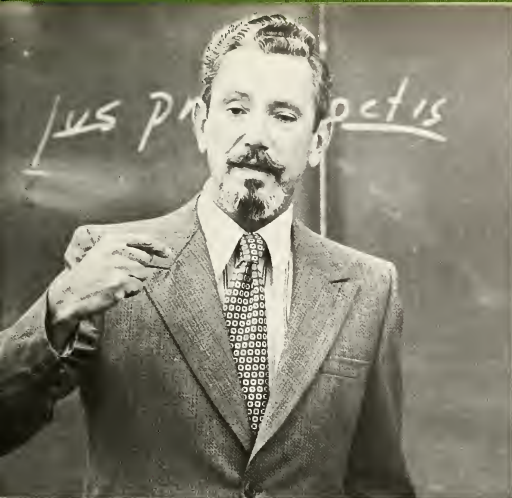
psychology department:

abnormal at times

rats! . . . coming
to grief
and death in
324 . . . finding out what
makes us
tick . . . experiments
and data . . .

gwen bate
robert miller
miriam drucker, chairman
tom hogan
lee copple





sociology department:

from anthropology to zpg

of mon and
men . . . working outside
the classroom . . . women's
birthday calendar
on mr. mills'
door . . .

john tumblin
connie jones
paul mills, chairman



spanish department:
hasta luego



lope de vega
to larca . . . speaking,
listening, writing . . . mrs.
herbert on spanish
politics . . . mexico, too . . .

aleida martinez
elaise herbert
constance shaw, chairman



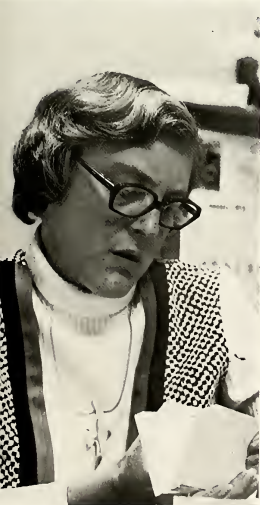


theater department:

learning to project

where the
play's the thing . . . make-up
work . . . sewing
costumes, hanging
lights, setting scenes . . .
mr. brooking: full-fledged
chairman naw . . . theatre
history . . . improvisation . . .

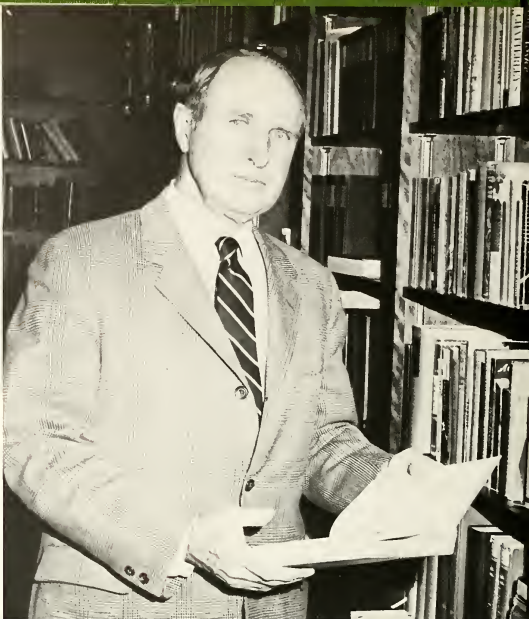
jack brooking, chairman
bill evans
elveno green



office of the president:

the big boss

conferences, meetings,
appointments . . . eating
lunch with the faculty . . .
miss band; *ex officio* for
almost everything . . . no
longer the "new president" . . .
dictation and discussion . . . the
fastest smile in the east . . .





marvin perry, president
bertie bond, administrative
assistant





office of the dean of the faculty:

the complexity of schedules

offering
counseling and advice . . .
appointments . . . supervising
course selection . . . summer
school and graduate information . . .
return of mrs. petty . . . help from emma

julia gary, dean
emma zell, office services secretary





mildred petty, assistant dean
gue hudson, class dean
katherine turner and
jayne armstrong, secretaries





office of the dean of students:

improving student life

trying to please everyone
with room assignments . . . lots of
irons in the fire . . . working for
the student body . . . helping individuals . . .
end-of-the-quarter notices . . . our
wonderful "dorm mothers"

martha huntington, dean
mallie merrick, assistant dean
mary lindig, secretary
faye parks, lou vaarhees, sidney kerr,
jane kane, and mildred stibgen, senior
residents

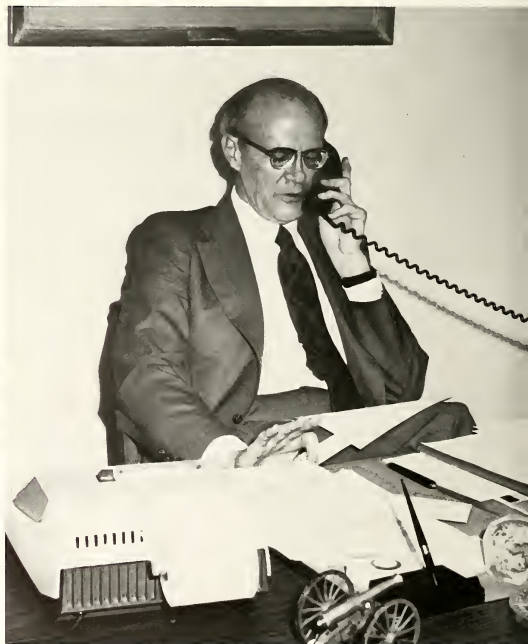


office of development:

new sidewalks

raising money — and
spending it . . . administering
the agnes
scott fund . . . stationery
close-out sale . . .

debra neely, secretary, deborah fleming
and penny wistrand, fund officers
paul m. mccoyn, vice-president/director
mary currie, fund officer



business office:

keeping us "in the black"

financial affairs . . . purchase
orders . . . talking
with salesmen . . . planning
for new developments . . .

harriet higgins, intern
jaann mathews, secretary
james henderson, vice-president, business



registrar's office:

up to date records

lots of
paperwork . . . keeping
files . . . grades and transcripts,
registration and
scheduling . . .

laura steele, registrar
linda anderson, secretary
gloria wyatt, assistant



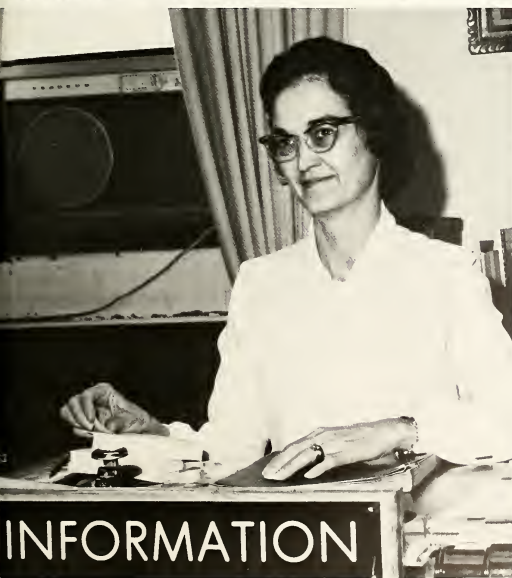


office of public relations:

news releases

the weekly calendar . . .
information
from mrs. markert . . . helping
with senior
investiture and
sophomore parents'
weekend . . . xeroxed clippings
posted in the
mailroom . . .

w. edward mcnair, director
dorothea markert, assistant
andrea helms, news director



admissions office:
spreading the
good word

judy tindel and melissa vandiver,
assistants
angie jarrett, assistant director, and
ann rivers thompson, director
kay potter and jan johnson,
secretaries
mary m. maclouchlin and marcia knight,
assistants, and mary k. jarbee,
administrative assistant



student reps . . . mounds of
applications to sort . . .
interviewing . . . guided tours
of the campus . . . mailing
out bulletins,
brochures, and catalogues . . .





alumnae office:

mailings, mailings, mailings

keeping track of
alumnae . . . the quarterly . . .
sponsoring local
clubs . . . memorial book
plates . . . organizing
alumnae weekend . . .

virginia mckenzie, director, and
mortha yates, assistant director
elo curry, hostess, frances strother,
secretary, and betty lackey,
assistant



treasurer's office:

the closest bank in town

collecting
payments . . . the place to
go for ready
cash . . . strange office-mates:
a vault and a sniffer
of candy . . .

janet gould, accountant, and
janet holmes, cashier/clerk
kate goodson, supervisor

custodial services:

sweeping and dusting
dorm rooms

allen osborn, supervisor, and
lattie o'kelley,
assistant supervisor



bookstore:

grab bags and record
sales

ursula m. booch, cashier,
elsie doerpinghaus,
assistant manager, and
verita barnett, manager



career planning:

testing, interviews,
and resumes

jean davis, secretary
ione murphy, director



dining hall:

the hands that feed us

foye robinson, assistant manager
barbara saunders, manager
louise wimpy, supervisor

engineering supervisors:

ohms, amps, watts, and volts

fred lewis, chief engineer
milton brooks, assistant

financial aid:

supervising on-campus employment

anne stapleton, director



student health services:

angels of mercy from emory

mary benz, support nurse
rosemary kriner, director

snack bar:

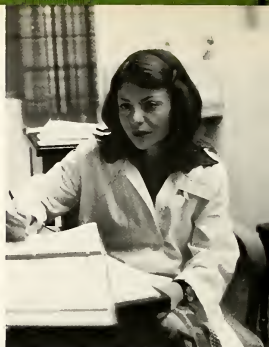
remedies for the munchies

liska hill, manager

library:

help with reserve books and term papers

bess ginn, periodicals, mildred walker, secretary, jonet sanders and miriam merritt, technical services assistants, and down lamade, technical services librarian, dale luchsinger, head librarian. not pictured: lilian newman, associate librarian





personnel office:

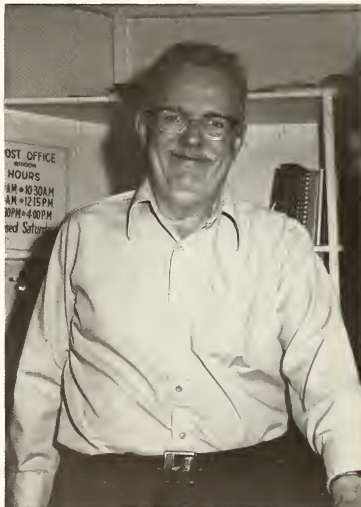
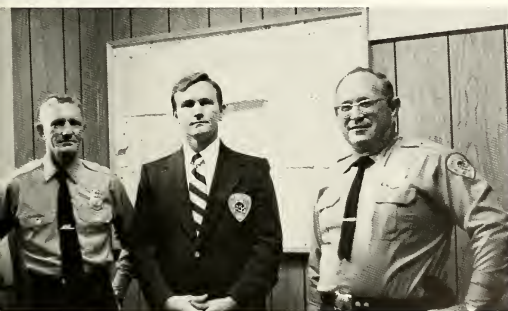
students on the payroll now

judy filler, aide

post office:

nine-twenty lines

louis cox, postmaster



security guards:

our blue knights

donald league

frank blackman, director

jae knight

ralph hortan

lester henry

alec evans





organizations

press of meetings . . . carrying on traditions . . . projects
and programs . . . dimensions beyond the classroom . . .
fulfilling responsibilities . . . initiating new activities . . .
individuals working together . . . totals greater than the
sum of their members . . .

arts council:

receptions to plan

- monday meetings
- . . . art sales and showings . . .
- posters to make . . . brandon's
- calls for volunteers . . .
- getting into show biz
- movies on campus
- . . . sponsoring the arts festival . . .

front row: julio midkiff, liz hornsby, lynn holden faley second row:
barbara byrd — acting secretary, brandon brame — chairman,
elizabeth stuebing, susan smith third row: pam brasswell, lydia
bendeck, elizabeth knight, gloria lewis back row: katherine akin,
patty pearson, jone fraley — treasurer, debbie mcbride not
pictured: kate kussraw — secretary, kathy cates, ann conrad,
genyne long



art club:

selling student artwork



pottery, printers, painters, et. al. . . . field trips . . . the student art shop . . . sponsoring print shows . . . artistic posters . . . painting walls in presser . . . sponsoring speakers in artistic careers . . . exhibits on artists in the library . . . supporting the spring break trip to washington, new york and boston . . .

beth dewell — president, susan smith — vice-president, mariana edwards — secretary/treasurer, mini holmes — publicity, barbara duncan, jane maas, gay blackburn, melinda morris, sharon callings, elaine williams, leslie doyle, nan atkins, genynee lang, elizabeth steubing, donna wyatt, ann baxley, kate kussrow, brandon brame
not pictured: mrs. miller — faculty advisor



athletic association:

sporting warm-up suits

planning picnics . . .
jockettes? no, real
sports . . . awarding the
spirit trophy . . . competition . . .
blood (sometimes), sweat, toil —
and fun . . . sponsoring ping-pong
tournaments and karate
classes . . . afternoon basketball . . .
high-sticking in field
hockey . . . the thrill of
victory, the agony of
defeat . . .



front: roslyn fretwell — secretary, diana lipscomb, mary christ brown, audrey grant
middle: cindy camper, harriett graves — vice-president, pally crook —
treasurer, carrie rolander
back: beth meaney — president, nancy perry, lau holcombe, beth sandell, miss
manuel — faculty advisor
not pictured: susan pirkle





tennis team:

practice makes perfect

state tournament, finished
no. 6 . . . no. 1 doubles team,
harriett graves and terri
keeler, finished second . . .

pedrick stall, lynn wilson, susi pedrick, kim
gzeckowicz, linda duke, harriett graves, katherine
harris, henny leland, terri keeler, alice lightle, pam
hamilton



aurora:

a publication of
the creative arts

on the prowl for new literary
lights . . . manila envelopes . . .
stuffing boxes thrice
a year . . . working on the
writers festival . . . producing
a magazine of creativity . . .

aurora: lynn faley, brandon brame, liz hornsby —
editor, nancy hopkins, julia midkiff, kate kussrow
not pictured: onicio lane



b.o.z.:

an aspiring
group
of writers

the literary club . . . informal
meetings to discuss
members' poetry and short stories . . .
bringing
speakers to campus
to talk about their
work

julia midkiff, sue diseker, melanie best, nancy hopkins, liz
hornsby — vice-president and secretary, kate kussrow
— president, mariolo bethencourt, miss trotter —
sponsor
not pictured: onicio lane, cheryl hiers





black friars:

promoting and
providing drama
on campus

front: sandra eichelberger, debbie mcbride, carole langston, eva gonit, dr. braeking, miss green, faculty advisor, elizabeth knight, lyns summers — secretary, sandy fawler back: anne walker, mary crist brown, judy bartholomew, linda kimbrough, mr. evans, faculty advisor, Elaine Williams — president, mimi holmes, cathy walters, leigh minor, donna hubbard

not pictured: shirley chan, debbie daniel, sue edwards, sylvia foster, karen green, linda harris, ginny johnson, linda mcinnis, beth meaney, jennifer middleton, stephanie astalos, ralee cafes, ellen hunter, liz jenkins, melinda porter, frances hall, ann turner, pannie burchenal, nancy bitter, mary lipscomb, ann galloway



blackfriars:

a tribute to the american theatre with "the rope dancers" in the fall . . . the "milk train" in the spring . . . experimental children's theatre — "house at pooh corner," "2 one act plays . . . informal talks with visiting actresses . . . mime performances winter quarter . . . work and time, but finally — a successful production . . .





front: kathy schnitker — member at large, carrie
rolander — sophomore class, barbara williams
— honor court, julio midkiff — profile, bungi
harris — spirit committee, sherry duary — sgo,
nancy leasdale — chairman, sue jordan —
sophomore member at large middle: jone
browley — senior class, rachel alexander —
interdorm, eleonor mccoim — junior class, win
anne wannemaker — orientation council, frances
holt — day students, katherine okin — silhouette
back: brondon brame — arts council, crista cline
— secretary/treasurer





board of student
activities:

campus coordinator

unification of boards . . .
. . . approving alcohol . . .
involvement in community
fund-raising activities . . .
. . . first happy hour with
a live band . . . cooperating . . .
. . . greater awareness of
each board's purposes
and goals . . .





front: lucta allen, shirley chan, lydia maria bendeck —
president, linda kimbraugh, sue disseker, benedicta boucher
middle: martha howell, sue borefoot, yinka edun, madelyn
redd, safrak yaprak, nilgun erelen, diana casten, winnie
cho, jasmine choy, eleanor yancey, patrico aguilar backi
haai chain lee, cathy walters, mrs. mildred stibgen —
advisor, sheryl jahanson, suson smith, anita diaz, kay
kirkland, susan leang, ann denker, nida emmons, rabin
kessler, stacie faiala





chimo:

international exchange

promotes relations between american and foreign students . . . united nations week . . . films from different countries . . . presentation of countries represented at scott . . . in the dining hall — international dishes . . . spring trips to give foreign students a chance to see more of the u.s. . . .







christian association:

a focus on faith

. . . tuesday chapels . . . striving for
 service . . . community projects . . .
 . . . helping charities . . . square dancing
 . . .
 and the open door



members: lucto allen — president, karen white — vice-president, mary anne barlow — secretary, pam hamilton — treasurer, beth sandell — chapels chairman, cindy peters and robin ransbotham — interfaith co-chairmen, paulo starr and donna winters — focus on faith co-chairman, bonnie pedersen — publicity chairman, becki johnson and addie price — orientation co-chairmen, kimm smith — outreach chairman, beverly brown and becky mccullough — c-a representatives co-chairmen, jean williams and susan hall and mary brown — coffee house co-chairmen, deede martan and kathleen o'brien — social co-chairmen, mrs. mary boney sheats — faculty advisor

dana scholars:
academic
excellence and
demonstrated
leadership

honored for leadership,
scholarship, service . . . a
passel of people . . . dinner
together once a year . . .
determining a direction
with career week of shadow
program . . . letters from
susi . . .

members:
class of 1976 — cherry joy beysessel, gay
blackburn, beth boney, brandan brame, lee davis,

harriet graves, lea ann grimes, liz harnsby, sherry
hueltsch drury, alice lightle, peggie miller, ann
pattan, martha smith, janie suttan, anne walker, win
anne wannamaker, barbara williams
class of 1977 — mary anne barlow, mary crist
brawn, barbara byrd, christa cline, sylvia faster,
cindy hodge, sue jinks, kate kussraw, pat mcwaters,
julia midkiff, beverly nelson, anne paulin, susi
pedrick, sally sharley, susan smith, lynn wilson
class of 1978 — judy bartholamew, marguerite
baath, mary brawn, pannie burchenal, ann hester,
emily halmes, sue jordan, linda kimbraugh, donna
lichfield, jeanie malmgren, judy miller, paige pattan,
betty philips, elaine sheppard, kithy smith, sally
stamper, paula star, cathy walters, cathy winn





day student officers:

posh new quarters

. . . bake sales . . . getting "commuters" more involved in campus life . . . gemma at rep . . .

gemma jernigan — president, elaine sheppard — social chairman, francesholt — vice-chairman



lecture committee:

a student-faculty effort

. . . choosing major speakers for campus events . . .
. . . receptions . . . working with various departments for special speakers
. . . publicity and programs

mr. volkoff, anne paulin, martha smith, miss green, mrs. young — chairman, jeannie malgrem, patty pearson, mrs. woods, mr. fuller, mr. mcnaulr

dance group:

pointed toes and strained muscles

one, two, three, one, two, three . . .
dances of all forms . . . watching mrs.
darling . . . hours of work . . . creating
. . . programs for the campus and
community . . .

members: jessette alberts — president, mary anne
barlow — vice president of publicity, pam brasewell,
katrina cliffard, bess cox, suzanne cox, ann denker,
pam eason, jan fleischman, denise flayd — vice
president of membership, susie games, katherine
handly, cindy hodge, mary halliday, cheryl kitchens,
rita kitts, mary lamberson, henrietta leland, lina
anne mcall, susan mcullaugh, laura mcdonald,
mary jane narval — sec.-treas., jenny rackwell,
carrie rlander, pam roukaski, mary anna smith, sally
stamper, melinda tanner, lois turner, valerie
vreeiland, sarah windham, cathy winn,
marilyn darling — faculty advisor





dolphin club:

getting into the swim of things

rippling water . . . practice . . .
 choreographing movements to music
 . . . holding breaths . . . a tour of
 the states in the sophomore
 parents production . . . precision
 and coordination . . .



frant: betty philips, ginny johnson, jeanne janes,
 raslyn fretwell, sylvia faster, angela fleming, laurie
 kramer, robin ransbathom middle: janie suftan, ellen
 poole, sarah marshall, kathy oates, sue jinks, glenn
 hankinson, debbie clark, addie price, glorio lewis
 back: kathy fitch, sally warkman, julie poole, ginny
 mcgwire, c. j. beyselance — president, trudy stane,
 mary hiley — treasurer, laura boyd
 not pictured: carol carbett, mary ellis, miss manuel —
 faculty advisor



hopkins: jule jordan — president, tammy shell, gloria
lewis, secretary

cottages: sue jinks — secretary, kay lawther, ginny
maguire — president, pat aguilar — president of bowen



inman: front: caroline swink — secretary, nancy sisk
— president, linda kimbrough, back: dacia small,
susan smith, marty knight



dorm councils:

regulating dorm life

posting phone co-op and
hostess duty . . . fire drills
. . . holiday parties . . .
promoting peace and harmony
on the halls . . .

main: henny leland, jeanne jones, lucy burch —
president, pat mcwaters — secretary



rebekah: laura underwood — president, linda shearan
— secretary, mary anna smith, lydia bendeck

walters: jennifer driscoll, amanda hicks, patsy crolle,
sharon hatcher, jeanie moares, jane ashcraft, yinka
edun, secretary, scatty o'kelly, president

winship: thelma ruddle, georgina hernandez, judy
bartholomew, jane hunt, margurite baath, tani
meador, secretary, diana lipscomb, president
not pictured: barbara byrd





interdorm:

sounding the fire alarms

reps from cottages and halls . . .
 organizing dec — your dorm and
 campus security week . . .
 celebrating with ice cream parties
 . . . upholding social regulations
 . . . more power to 'em . . .

judicial members: front row: linda
 kimbrough, tammy shell, amanda hicks
 back row: sue jinks, jennifer driscoll front
 row: rachel alexander — vice-chairman,
 leo ann grimes — chairman, laura
 underwood — rebekah back row: nancy
 sisk — inman, scotty o'kelly — walters,
 ginny maquire — cottages, lucy burch —
 main, julie jordan — hopkins, treasurer,
 diana lipscomb — winship





eta sigma phi:

scholars of the classics

owl t-shirts . . . inviting speakers . . . applause for plautus . . . enjoying miss cabius' and miss zenn's company and cooking . . . a prytanis who can't remember her title . . .

front: sally echols, anne walker, robin ransbotham, eleanor mcconn, mary crist brown back: beth meany, susi pedrick — grammateus-chrysaphylax, (secretreas.), jane fraley — hyparchos (vice-pres.), liz harnsby — prytanis (pres.), miss cabius, miss zenn not pictured: kathy oates, karen white, lynn summer



spanish club:

¿habla español?

denise flayd — president
lucita allen — vice-president
(publicity)
gearginia hernandez — vice president (membership)

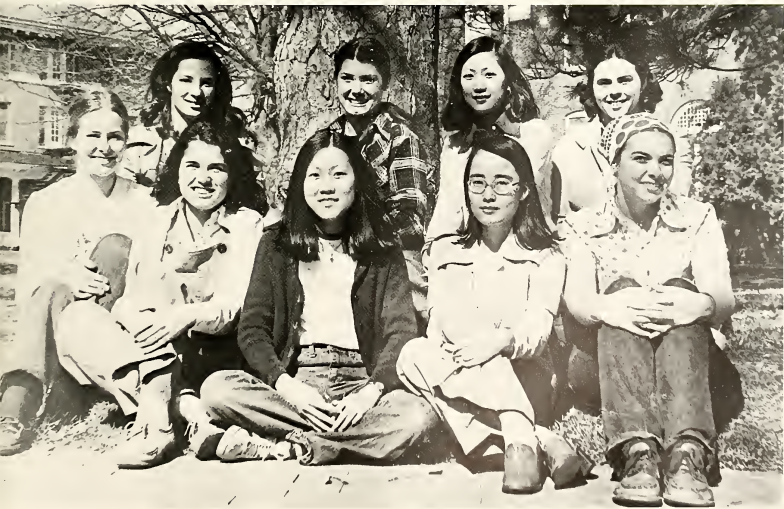
the weekly spanish table . . . practicing accents through conversation . . . special programs . . . a pan-am without the airplanes . . .



german club:

plans for the summer study to germany

front: elizabeth steubing, sandra sassee, shirley chan,
winnie cho, brigitte hartmann back: melanie lenzmann,
lucto allen, joesmine choy, elaine pantazopoulos



german theater group:

performing in german

jasmine chay, lucta
allen, elizabeth stuebing,
melanie lenzmann, shirley
chan

not pictured: ann denker,
becki johnson, karen
lockard, libby myre, carol
overman



french club:

conversations in french over lunch

sue diseker, benedict
baucher, lee davis,
linda kimbrough, scotty
o'kelley



g-pirg:

building a sound structure

organizational work . . .
positions on the state
board . . . testing water
quality . . . prepared to
serve through environmental
and consumer projects . . .

holly bennett, sue jordan, tish dupant, lark todd, eleanor mccain — chairman, bannie staffel — secretary, jan
fleischman — treasurer



glee club:

the sound of music

rehearsals, rehearsals . . . memorizing music for the first time . . . holiday concert with georgia tech . . . singing valentines . . . the vienna symposium . . . concerts at local churches . . . the relaxation of after-show receptions . . . a joint concert with columbia university focusing on the music of charles ives . . . a tour to columbus . . . the thrill of a standing ovation . . .





soprano I: anita plunkett, ann conrad — vice-president of concerts, susan bethune, winnie cho, audrey grant, deniz sofak yaprok, k. c. dacie, angela carter, lynn holden foley, marguerite booth

soprano II: mary ihley, debby daniel, denise westbrook, ginny lee, sharon callings, karen white, melinda maris, emily winge, kathy aates — secretary, arts council representative, accompanist; holly mcferlin



alto I: melanie best, sharan glaver, dana nichols — treasurer, pot mcwaters, susan gledhill, sandra eichelberger, ginnie risler, catherine mcoughlin, paige polton, rachel alexander, kathy schaitker, evelyn babcock — vice-president of membership, accompanist.

alto II: julie jordan — vice-president of publicity; janet norton — president; julie johnston, susan smith, claudio elmore, genyene lang, diane peterson, tammy shell, donna stixrud, nanette kouts, coral trussell



honor court:

upholding the honor system

long hours of dedication to the ideal . . .
cases . . . "working from the bottom up,"
. . . a special fall convocation . . . fourth
buttrick . . . sponsoring hub parties . . .
hall meetings on exam procedures . . .
joint meetings with interdorm . . . honors
emphasis week: it's a matter of fact . . .
encouraging responsibility . . . trust,
maturity . . .

(opposite page) front: susi pedrick, lynn wilson —
secretary, polky farwater, barbara williams — vice-
chairman, ann patten, betty phillips back: mary crist
brown, mimi holmes, anne walker — chairman





organ guild:

pipes and pedals

performing for each other . . . thursday lunches together . . . seeing the organs in churches and the fox . . . attending concerts . . . master class with the master . . . critiques . . . sensitivity to technique and execution . . . glorious sounds . . . an increasing understanding of the king of instruments . . .

katherine akin — president, ann turner, rachel alexander, susan pirkle — sec.-treas., elizabeth knight, mr. martin — faculty advisor
not pictured: mory katherine dunlop, suzanne nash

agnes scott madrigals:

a song for you

. . . lilting melodies . . . a cappella . . .
black and white outfits with a dash of red
. . . singing for the fun of it . . . pitch pipes . . . entertaining for garden clubs, nearby schools, sophomore parents

members: melanie best — accompanist, marguerite baath — musical director, kim cobbie, ann conrad, lynn foley — arts council representative, martha hockle, julie johnston, frazer kinnett — president, hope lamade, ginny lee





music club:

coordination
of musical
events

stimulating interest in music . . .
intertwining the campus and metropolitan
area . . . receptions for concerts . . .
sharing talents . . . hastening the opera
. . . diversity of musical interests . . .

members: denise westbrook — president, peggie
lamberson — vice-president, gemma jernigan, ann
conrad, evelyn babcock, katherine akin, susanne
nash, k. c. dacie, mr. fuller — faculty advisor



mortar board:

an honor for seniors

tapping by candlelight . . .
chosen for leadership, scholarship
and service . . . singing
in mckinney . . . wondering if
black cat will really come
off . . . IWY . . . applicants'
weekend . . . counting ballots . . .
being spoiled by meetings
in advisors' homes . . .
always busy . . .

barbara williams, liz hornsby — reporter/historian,
martha smith — secretary, harriett graves —
treasurer, gay blackburn, eva gantt, win anne
wannamaker, janie suttan, anne walker, alice lightie
— vice president, cherry joe besseylane — president

faculty advisors: sonda bowden, patricia pinko,
marion t. clark





orientation council:

getting to know you

letters . . . letters . . . and more letters . . .
do you know your abc's . . . send your best
picture for the book . . . summer reading list
. . . organizing rush — sign-up and skits
. . . presenting a liberal arts panel . . .
dancin' in the street . . . where big sis meets
little sis . . .

front row: lee davis — social and publicity chairman, lark
todd — chairman, winanne wannamaker — vice
chairman back row: susan smith — academic chairman,
betsy whilmire — treasurer, ann hester — rush
chairman, cathy winn — secretary



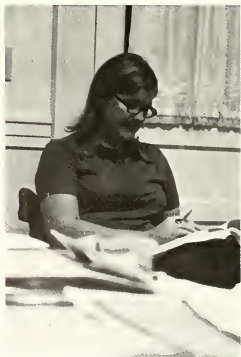
profile:

forum for opinions

julio's journalism
lessons . . . make-up: all the
news printed to fit . . . winter
re-organization . . . new features
crosswords, faculty interviews,
and roses-and-thorns . . . finding
typos friday in spite of
proofreading monday and wednesday

front: sandra sassee, julia midkiff, liz harsby
middle: ginny lee, libby myre, eleanor yancey back:
celeste vasseleer, frances wickes, emma jahnsen,
susan smith, anicia lane
not pictured: margaret lamberson, janet norton,
eleanor graham, patty pearson

julia midkiff, editor





student government
association:

the discussion of r.c.'s

jonie rapping the gavel . . . the democratic process
of petitions . . . nominations . . . elections . . .
gathering student opinions through polls on parietals
. . . the question of mandatory convocation . . .
rep's new system . . . the money pool . . . parking
problems . . . security warnings . . . the process of
efficient legislation through representation . . .



sophomore representatives: lynne oswald, paige patten, martha jane cates, molly mcdonald

freshman representatives: andrea groover, louise kramer



sga officers: cindy hedges — secretary, janie sultan
— president, sylvio faster — treasurer, sherry drury
— vice-president





college bowl:

quick
questions,
instant answers

. . . southeastern conference
. . . sharp minds . . . lightning-
quick responses . . . daily
practice during chapel
periods . . .

team members: kate kussrow, alice lightle, eleanor
mccain, susan pirkle, anne walker, lynne wilson, mr.
nelson — coach, barbara williams

junior representatives: debbie smith, sally shurley,
renee alexander, carol corbett

darm and day student representatives: kay williams,
gemmo jernigan, susan kidd, cathy harris

senior representatives: lucy turner, pedrick stall,
harriett graves, pam hamilton

student admissions representatives:

a new approach

students aiding the admissions office . . . an informal liason . . . organizing atlanta area prospective students day . . . having hometown parties and slideshows . . . helping acquaint others with agnes scott . . .

committee chairmen. front row: andrea graaver, cindy hodes, leslie doyle, crystal singleton back row: linda shearon, mopsy widener, mary reid, judy tindel — sponsor, catherine brawn, tammy shell, renee davis

front row: lark tadd, win anne wannamaker, denise kaan, tracey thomas, melanie best, dacia small, nan kouts back row: ginny maguire, fish dupant, ann hester, cathy winn, ann denker, mary anna smith, tami peavy, becki johnson, beverly nelson

not pictured: lueta allen, lucy burch, beth dewall, gemma jernigan, cheryl kitchens, emily rumph, pedrick stall, lucy turner, nancy leasendale, pannie burchenol, patsy cralle, sally stamper, cathy wallers, renee andersen, melinda morris, kathy oates, anne paulin, mary anne barlow, lynda harris, ginny lee, genye lang, marjorie farrell



silhouette:

deadlines,
deadlines,
and more
deadlines

a fresh start with a
new room, new publisher
and a new staff . . . an
attempt to capture
the essence of the liberal
arts . . . hours of
work towards a deadline
. . . the coordination of layouts,
copy, pictures . . . the
satisfaction of working
together as a staff to
produce the 1976 silhouette . . .



goy blackburn — editor, katherine akin — business manager

staff members: mary reid, leigh minor, peggy preiffer, frazer kinrent, donna hubbard, beverly nelson, pedrick stall, bess cox, lucy burch, barbara duncan, claudia elmore, ginnie risner, jonet bradley

copy staff: cathy walters, emily wingo, liz hornsby — editor, leigh dillon, ann jones





photographers: kitty
bireley, andrea groover,
marty lovorn

editors: sharon collings —
junior class, jennifer
scott — layout, carolyn
bitter — senior class,
alice newton — photography
assignments, ann hester —
student life, catherine
brown — freshman class,
anne poulin — administration,
jeanie malmgren — sophomore
class, tommy shell —
organizations, raslyn
fretwell — index



social council:

providing entertainment

tea for new students . . .
notices about mixers . . .
faculty-freshman dessert . . .
sponsoring the big three:
black cat at the regency,
winter novelty at the fox
and spring dance at the marriott . . .

front row: sue jinks, ginny maguire, melissa mills, suzanne halloman, ann hester, poge
airheart back row: beth boney — chairman, jill warthey — vice chairman, anne band
— treasurer, anne paulin — secretary, anne getchell, barbara clark, emily rumph,
cherry jay beyselance





spirit committee:
morale booster

. . . pumpkins and dried
flowers at the fall
festival . . . arranging
trips to the big city
for sports events

solly echals, kathy
schittker, patty
pearson, bungi harris —
chairman
not pictured: marly howell

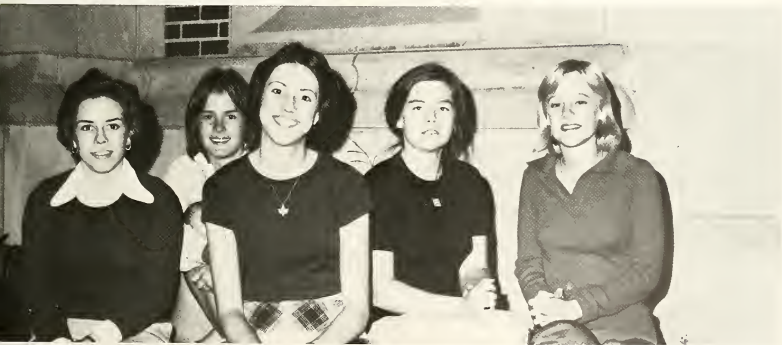




who's who among american
universities and colleges:

the most outstanding seniors

chosen by the senior class . . .
announcement at convocation
. . . most likely to succeed . . .
in recognition of four years
of dedication and hard work . . .



liz harraby, martha smith, brandan brome, cherry joy
beyselance, anne walker

barbara williams, alice lightle, nancy leasdale,
harriett graves, winanne wannamaker

lark todd, katherine akin, sherry huesbach druary, gay
blackburn, peggie miller, janie sutton







conclusion

ads, index, closing . . . support from businesses . . .
first fraternity ads . . . purple and white for
patrons . . . finding where to find people . . . a
summing up . . . shaping of self with the support
of the community . . .

dear raggedy ann,
 even though you're leaving
 ol' a.s.c.,
 you'll always be very
 special to me.
 congratulations!

love,
 jhot stuff



Howard L. Smith
 Representative

peachtree corners
 tel. 404-449-5600

3300 holcomb bridge road
 norcross, georgia 3007

jewelry's finest craftsmen



PRESTIGE TRAVEL INC.

Sarah R. Shearer
 General Manager

2285 Peachtree Road, N.E.
 Atlanta, Georgia 30309
 552-3435

pizza by candlelight

303 e. college ave.
 decatur, ga.



Foods & Spirits

11 A.M.—4 A.M.

*The Place
on Paces*

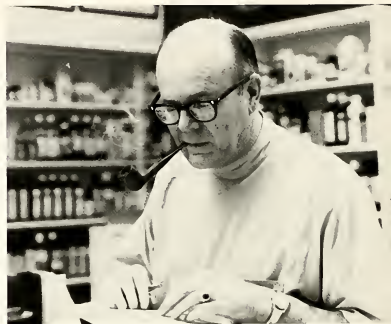


292 East Paces Ferry Rd • Atlanta, Georgia • 233-4958



Watson Pharmacy

309 e. college ave.
decat,ur, ga.



DeKalb OFFICE EQUIPMENT

COMPLETE
LINE OF

OFFICE
SUPPLIES

FURNITURE
SUPPLIES
OFFICE
MACHINES

SALES &
SERVICE

CHAMBLEE STORE DECATUR STORE

458-3374 377-4231

CHAMBLEE PARK
SHOPPING CTR.

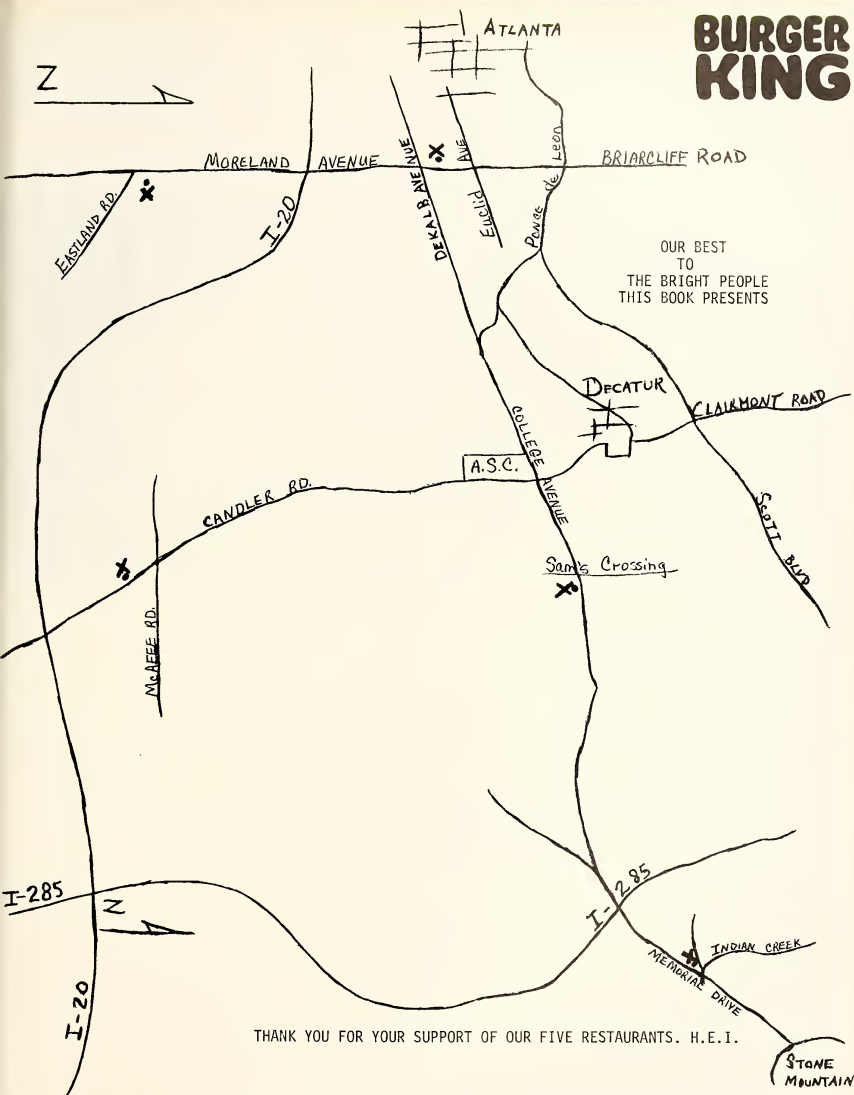
701 CHURCH
DECATUR



Sharian Carpets

368 w. ponce de leon ave.
decat,ur, ga.

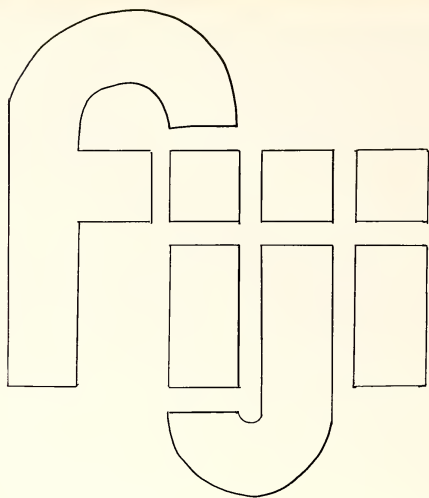
BURGER KING



OUR BEST
TO
THE BRIGHT PEOPLE
THIS BOOK PRESENTS

THANK YOU FOR YOUR SUPPORT OF OUR FIVE RESTAURANTS. H.E.I.

STONE
MOUNTAIN



home of phi gamma delta
at
georgia tech

congratulations and good luck
to our agnes scott little sisters

holly mcferrin
ann patton
paige patton
aria spencer

Manuel's Tavern

602 n. highland ave.
atlanta, ga.
4877 memorial dr.
decaturn, ga.



ENJOY
Aristocrat
ICE CREAM
"ALL THE NAME IMPLIES"
165 HAYNES ST., S. W.
ATLANTA, GA. 30313

Shield's Produce Inc.

141 sycamore st.
decaturn, ga.

since 1931

fancy fruits and vegetables

Callaway Motors

231 w. ponce de leon ave.

decaturn, ga.

CREST-ART, INC.

405 great southwest parkway s.w.

“EVERYTHING IN ART”



p.o. box 44045
atlanta, georgia 30336
404—691-4954

Hairdesigns by

Glenda's Style Gallery

315 W. Ponce DeLeon
First National Bank Bldg.
Decatur, Georgia

Healthy, natural-looking hair that remains
manageable from shampoo to shampoo.



a big thank you to the upperclassmen on third walters
from the freshmen on third walters



brazler' foods

We
appreciate
your
visit
to our store

I *MEANT* TO TREAT YA...
BUT ALL I GOT IS THREE
PENNIES AND A FROG!



ScrumPdillyshus!

patrons ads

henry howard smith
st. clair carpets
decatur cleaners and hatters

age of travel, inc.
class of 1976
class of 1979
colonial baking company

rice's on the square
mr. william h. weber, III
jane brawley
decatur schwinn cyclery
market-place of free ideas

253 trinity place
decatur, ga.

5039 memorial dr.
stone mountain, ga.

administration

adams, john 1 140
 adams, mary virginia 130
 adams, margaret p. 129
 anderson, linda p. 159
 anderson, susan 156
 armstrong, nyelle f. 151
 baer, bettie n. 122
 baer, benjamin p.
 barnett, vereta m. 160
 bats, gwen 144
 beahm, david p. 141
 beitz, mary 162
 beckman, gaudin 135
 bekirkman, frank g. 163
 bello, marilyn
 bend, mary olivena "bertha" 149
 boach, ursula m. 160
 boecher, benedicta 133
 bowden, vander 125
 bradham, pauline 130
 breaking, pack c. 147
 bronks, milton 161
 brow, michael J. 137
 byrniade, romanid J. 139
 cabrini, gert 127
 callan, frances 133
 camphel, pamela 136
 carne, jane 153
 carter, mary
 chong, kwon sing 123
 clark, marion t. 126
 cochran, angustia b., III 137
 copeple, lee b. 144
 correa, linda b. 141
 cost, linda g. 163
 cunningham, alex j. 126
 currie, mary l. 154
 curray, mary 136
 daniel, marilyn 142
 davis, wren w. 160
 day, robert
 dewees, carnie
 deminghous, eliza p. 160
 drucker, steven 144
 Evans, elsie 163
 evans, william h. c. 147
 feickman, emmanuel
 fermig, deborah a. 113
 foham, george h., III 143
 fox, mary w. 126
 frances, madeline p., M.D. 107
 fuly, jay c. 140, 181, 197
 gaman, lynn 131
 garber, paul 123
 gary, jake t. 150
 gignillett, john 136
 gnn, elizabeth 162
 goodness, carol
 goodness, Kate b. 159
 Gould, Janet m. 159
 greco, elveta m. 147, 173, 181
 gruccione, nancy p. 125
 harkinsand, elzie-wilkes
 helms, angela k. 155
 henderson, r. james 155
 henry, lester 163
 heughan, Lawrence c. 129
 herbert, mary elsie 146
 higgins, harriet 155
 hill, hilda 162
 hogan, carol 144
 holmes, jonet 159
 horton, rolp 163
 hubert, Claire m.
 Hudson, jow ardous 129
 jagu, john
 jarrington, martha c. 153
 garbo, mary l. owen 138
 jerrin, ann s. 158
 johnson, edward 128
 johnson, jon 158
 jones, constance ann 145
 jones, Margaret d.
 Kelly, mary l. "molly" 125
 Kerr, sidney 153
 knight, maura 158
 Knorr, rosemary 162
 knutson, linda m. 159
 lake, ann
 lamont, elaine a. 162
 league, donald 162
 lemansd, virginia a. 138
 leske, robert a. 138
 Lewis, freddy 161

lingo, mary 153
 luchsinger, dale f. 162
 macdonald, mary margaret 158
 manuel, kathleen c. 142, 166, 183
 market, dorothy 157
 maron, sydney j. 139, 196
 mattias, elinda g. 146
 mathews, rheodora k. 140
 mathews, joann 155
 mecum, paul s. 154
 mecumelli, anne 142
 mcdevitt, michael
 mekeme, kate 129, 142
 mekunas, virginia b. 159
 menas, w. edward 131, 157, 181
 meroney, geroldine 127
 merritt, malie 153
 messit, mary 162
 mills, carol j. 122
 millie, Gerald John 144
 millie, robert 126
 mills, paul r. 145
 murphy, aune 160
 neely, debora 154
 Nelson, jack l. 131
 newman, lilian lee
 o'kelly, thalia smith 160
 ohr, david w. 136
 Olson, alene 160
 parks, floe ponder 153
 parry, robert d. 141
 paxie, marie lupar 122
 peppardine, margaret w. 130
 penny, marvin bates, j. 149
 petty, mardell 151
 pekko, polonica g. 132
 pest, robert f.
 petko, kathleen L. 158
 petcock, paul g. 143
 piper, sara louise 138
 robinson, faye d. 161
 sanders, Janet 162
 sanders, Carlotta 161
 sauto, veronika 146
 sheah, mary pogue 123
 simpson, Rosemarie 124
 Sims, katharine 130
 sigkeit, joan
 sigkeit, s. anne 161
 silvers, island 122
 steel, chloe
 steele, laura m. 156
 Stewart, Janet 129
 stines, maldred 153
 strohfer, frances w. 159
 suyar, george e.
 Thompson, ann rivers 145, 158
 tiller, juliette m. 163
 Tindl, Judith Margaret 158
 hurter, margret g.
 timbley, jake a., jr. 145
 turner, katharine s. 151
 vandiver, melba K. 158
 vandiver, william m. 128
 vanoff, Vladimir 128
 warhous, bay 153
 walker, mardred w. 162
 weber, gail
 Weber, William h., III 128
 weidmann, velle g. 125
 westervelt, robert 122
 white, olgan 126
 white, sue
 winchfield, ingrid 135
 willis, randall b. 138
 Wiles, bell 137
 Wimp, Louise 161
 withard, jessie 124
 withard, penny row 154
 wood, linda l. 181
 wyatt, glennia m. 156
 yates, martha a. 159
 young, ryma goudo 127, 181
 zett, emma o. 150
 zinn, elizabeth 127

alevander, anne Craig 82
 alexander, rachel dawn 59, 174, 187, 193, 196
 allen, gary carlton 94
 allen, letha johnson 24, 176, 178, 188, 189, 204
 anderson, anne James 82, 202, 204
 arthur, Sarah susan 94
 baker, carol ann
 bakker, jane bracken 94, 184
 baland, valde sue 100
 ballou, stephanie 171
 ballou, steph ann 160, 167
 atlas, jenny
 baloback, Evelyn Elizabeth 82, 193, 197, 202
 barford, deborah l. 106, 176
 bars, lisa evangeline 64
 basny, dore hague 106
 baroff, suzanne diane 106, 176
 Barow, mary Anne 82, 178, 180, 182, 204
 bartholomew, Judith ann 94, 171, 180, 184
 basley, ann Kathryn 56, 167
 bassey, dore marie 106
 bask, margerite eve 106
 baskett, India marie 82, 166, 174, 176, 184, 206
 basman, Jesse a. "snag"
 basman, holly anne 83, 191
 bass, Melissa sue 106, 170, 193, 204
 basketmaker, maria dolores 107, 170, 176
 bassette, susan Kathleen 107, 178, 193
 bayslander, cherry jay 54, 180, 183, 198, 208, 211
 becker, kathryn gwen "kim" 76, 206
 beitch, susanne a. e. 107
 beetle, Carolyn ann 61, 206
 bell, mary carwell 107, 171
 bellamy, gary daley 51, 167, 180, 198, 206, 211
 Belmont, Janet anna 94
 bend, anne Elizabeth 83, 208
 beney, Elizabeth hannah 59, 180, 208
 Benson, kathryn vilaine 107
 berch, marguerite anne 94, 180, 184, 193, 196
 bern, ann celeste
 beucher, benedicta c. 189
 bewers, veneta s. 55
 Bewing, Martha pennelope 107
 bey, laura glenn 94, 183
 beyler, Janet marie 107
 bice, Elizabeth brunden 58, 167, 174, 180, 198, 211
 brossel, Pamela sue 75, 166, 180
 brwley, mary florence 62, 81, 174
 bruce, Janice Campbell 83
 bruley, Helen eugenia 95
 broodwell, betsy williams 107
 brook, Martha sue 107
 Brown, leaven elaine 95, 178
 brown, marguerite shover 95, 204, 206
 brown, delphine dem 62
 brown, mary Ann 69, 168, 171, 180, 188, 194
 brown, mary grace 95, 178, 180
 bruchman, Margaret Lynn 95
 bulbard, marquette halden 107
 bullock, hallett carter 76, 184, 187, 204, 206
 burkhead, ann carter 94, 95, 171, 180, 204
 burkman, susan donna 83
 burson, susan elaine 95
 busch, mary Margaret e.
 Byrd, Barbara Elizabeth 83, 166, 180, 184
 cameron, Elizabeth Lynn
 Cameron, lee leith 107
 camp, Cynthia norendah 95, 168, 176
 car, mary catharine 95
 carter, Angela marie 107, 193
 cates, diane jan 57, 176
 cates, kathy 166
 cates, Martha june 95, 202
 chat, shirley k., jr. 95, 171, 176, 190, 206
 che, Rebecca elaine 96
 che, Winnie Iva 96, 176, 193
 chey, josephine 83, 176, 190
 chess, Linda darlene 107
 chick, Barbara elaine 62
 chick, deborah Ellen 107, 183, 208
 chick, Nancy warden
 chlor, Katharina laurie 182
 dion, christie ann 83, 174, 180
 chon, kara lee 20
 cohane, Kimberly beth 96, 196, 202
 cohane, katharine rebecca 96
 collin, stevandra demetrios 76
 collin, Cecelia beamer
 collins, sharon Ann 82, 167, 193, 206
 Collins, beatrice eugenia 96
 collins, Beverly jo 107
 collins, sue dale

conn, ann boyce 52
 conant, sue fax 83, 166, 193, 196, 197, 197
 cook, penny jane
 Corbett, Carolyn Elizabeth 83, 183, 202
 Cor, laura leon 107, 182, 206
 cost, Suzanne Elizabeth 107, 182
 cottle, polonica ann 96, 184, 204
 cotter, Theresa Elizabeth 96
 Cramer, Alice Constance
 creak, Catharine Lynn 107
 crook, mary pauline 57, 168
 crutchfield, cheryl carrene 96
 cutter, Melba Evans 96
 damon, Elizabeth Anne 56
 Daniel, Deborah ann 107, 171, 193
 Daniel, idle ann 108
 Davis, dione renee 83, 204
 davis, Elizabeth dore 62
 davis, gwendolyn lee 50, 180, 190, 199
 dunn, mary Elizabeth 96
 Davis, paula 96
 Decker, ann Elizabeth 108, 176, 182, 204
 dean, cynthia 96
 deane, dianne cecile 97
 deane, s. phyllis 52
 Decker, bell barbara 67, 167, 204
 deatt, don 84
 deatt, lea 69
 deha, l. Hugh 97, 206
 Decker, sus Frances 23, 176, 190
 Decker, Kathryn c. 108, 193, 197
 Decker, Elizabeth 108
 deker, mary katharine
 dekle, keith a. 104, 167, 204
 Driscoll, Jennifer ann 97, 184, 187
 drury, sherry Kathleen 59, 174, 180, 202, 211
 Duke, linda anne 63, 202
 Duncan, Emily gillian 50
 Durbin, Barbara Lynn 97, 167, 206
 Durlap, angeline Wilcox 57
 Durkin, mary katharine 166
 Dupont, polonica Ann 108, 191, 204
 Evans, Pamela dore 182
 Echols, Sarah Franklin 66, 188, 210
 eden, joyella edwards 84, 176, 184
 Edwards, Marjorie Elizabeth 60, 167
 Edwards, m. sue 97, 171
 edwards, Sandra Elizabeth 108, 171, 193
 Edzie, Mary Elizabeth 97, 183
 Egan, Gladys 108, 193, 206
 Egan, nida anne 108, 176
 Enksen, laura 50, 176, 189
 Ennis, Kimberly-Jane 53
 Estala, Marie c. 176
 Estlin, Margie Ann 108, 204
 Ethel, Patricia Lynn 84
 Etkin, sue Ellen 97
 Etch, katharine Craig 97, 183
 Etz, Louise McDonald 69
 EtzHug, Kandra Marie 84
 EtzHugman, Ina Joy 182, 191
 EtzHug, Marie 97, 183
 Fetter, Angela 108, 178, 183
 Fichtner, Elizabeth Penny 98
 Filer, Joyce Dennis 57, 182, 188
 Filer, Lynn Kathleen 84, 166, 170, 193, 196
 Finner, Sylvia Elizabeth 84, 171, 180, 183, 202
 Fountain, Judy ann 108
 Fowler, Janet leith
 Fowler, susan Lynn 108, 171, 174
 Francies, anne Meredith 84, 166, 188
 Francisco, Elaine 84
 French, taelyn chandler 33, 168, 183, 206
 Fritz, darrell Lynn 102
 Fulton, Ann Kristina 65
 Galloway, Ann Louise 55, 171
 Gault, Evelyn Mackay 60, 171, 198
 Gault, Margie pennelope 109
 Gaudin, mary beth 109
 Garrison, lyle Glenn 109
 Gerlach, anne rivara 98, 208
 gibson, Susan Glenn 109, 193
 Givner, Sharon Kay 109, 193
 Gmeiz, Susan Anita 109, 187
 Glenn, mary katharine 107
 Glenn, sharon 109, 200
 Gynn, Barbara fawn
 Grant, Audrey Louise 84, 166, 193
 Green, Harriet Alta 72, 166, 180, 198, 202, 211
 Green, tenn 109
 Green, Karen Michelle 84, 171
 Griffin, Lisa dale 109
 Grimm, Lisa Ann 58, 180, 187
 grimes, anne thirskott 106, 116, 174
 gruber, Andrea Kathryn 111, 202, 204, 206
 Gress, mary Carter 110
 Guerin, Nancy ann 84

gackiewicz, nancy kemberly 110, 176
kadil, martha ann 84, 176, 196
kail, claire elaine 110
kall, susan lynne 84, 178
kallman, pamela jane 73, 178, 202
kammer, kara lynn 110
kandy, katherine ann 110, 182
kankainen, glenn irvin 84, 183
karr, bungi (H.D.) 173, 174, 210
karis, helan deborah 53
karis, kolleen 110
karris, linda lynne 110, 171, 204
karis, mary catherine 98, 202
karrman, brigette 176, 189
karrs, christie jerrigan
ketch, susan c.
ketcher, sharon ruth 98, 184, 206
keckel, coral ann 98, 176
keckl, martha jane 71
kernandez, georgiana c. 77, 176, 184, 188
kering, kathy 60
keter, ann louise 98, 180, 199, 204, 206, 208
keyward, carolanne reed
keys, ornando gbasan 110, 182, 184
keks, lacy buffalo 202, 206
kers, cheryl louise 70, 110
keiser, karen elizabeth 111
ketch, susan c.
kidd, jessica 110
kidds, cyntha 84, 168, 180, 182, 204, 206
kalcaban, elaine evans 108
kolland, elizabeth gordon 111
kollman, mary dexter 111, 182
hollman, susanne 84, 208
holmes, emily d. "miss" 98, 167, 171, 180, 194
holl, francine bradwell 85, 171, 174, 181
holl, hagar 70
holman, mary elizabeth 58, 170
hombay, elizabeth louise 69, 166, 170, 180, 188, 200, 206, 211
hombard, james
howell, marth ann 59, 176, 210
howell, deborah jean 77
hubbard, donna dianna 111, 206
hubb, jenny 111, 184
hunter, elise carle 111, 171
hunter, margo eleana modda 72
hutchison, m. Lynn 111
huyn, myra L.S. 183, 193
huyn, carolyn kyle 111
janes, rebecca ann 75
jarek, lucile rebekah 85
jarkins, elizabeth leandrea 171
jarrigan, brenda sue 106
jarrigan, mary gemma 71, 181, 197, 204
jarks, carrie sue 85, 180, 182, 183, 184, 208
jarrison, cheryl ruth 85, 176
jarrison, becky 99, 178, 192, 204
jarrison, carol dee 98
jarrison, christy Lynn 99
jarrison, vinola renee 85
jarrison, virginia barkdale 99, 171, 183
jathan, juely Lynn 193, 196
jones, anne curtis 111
jones, dorethy jennie 62, 183
jones, loretta sue 111
jordan, juely kathy 53, 174, 184, 187, 193
jordan, susan haye 99, 170, 180, 191
judd, janet ellen 99
julter, teri ann 85
kalan, karen kelly
kalkley, janni elizabeth 99
kalkley, garye clark
kalkley, robin elaine 111, 176
kall, susan audrey 99, 202
kall,William K.
kambrough, linda gynn 99, 171, 176, 180, 184, 187, 190
kanen, milled fradze 51, 196
kany, evlyn loise 112
kirkland, juely 112
kirkness, martha cheryl 70, 182, 204
kiss, rita gylete 112, 182
knigt, aka elizabeth 64, 166, 171, 173, 196
knigh, margaret aileen 99, 184
kniss, denise ma 112, 204
kniss, roanne m. 112, 193, 204
knorr, laurel ann 112, 183, 202
knott, kara elizabeth 112
kussow, kathleen 166, 167, 180
kumbad, elizabeth hagar 99, 196
kunk, dani Lynn 112
kurbang, mary margaret 99, 187, 192, 200
kurbang, mary elaine 85
kure, oncia marion 112, 170, 206
kure, Lynn jenne
kure, jerry 99

lature, sarah c.
lawler, katharine kolleen 112
lawler, judaehne thomas 84, 184
lawrence, mary milled 54, 174, 204, 211
le, thue chon 113
le, virginia louise 112, 193, 196, 200, 204
leland, hennetta bradford 61, 182, 184
leinzman, paula kowald 86, 176
leiser, susan 176
lewis, glenn annela 86, 168, 183, 184
lighth, elise foster 54, 180, 198, 211
linby, susan wacker 100
lispacma, donna high 76, 168, 184, 187
lispacma, mary Lynn 100, 127
litchfield, donna 180
littard, patricia karen 72
lloyd, linda applewhite 113
long, thae ghyena 113, 166, 167, 193, 204
lovorn, marie v. 100
luta, sandra lynne 113
lyon, marianne 86
mac, jane elizabeth 77, 167
macconn, virginia ulian 65, 183, 184, 187, 204, 208
maitinen, susan 100, 176, 180, 181, 206
manning, katharine karen 100
marigala, karen dean 113
marshall, sarah wynn 100, 183, 202
marion, carol elizabeth 86
marley, cora ann 113
mcbride, debra anne 71, 166, 171, 173
mcdonald, susan both 65
mccain, elleanor anne 174, 188, 191
mccain, cathleen reed 113
mccall, linda anne 113, 182
mccannell, mary ruth 100
mccord, laura lee
mccullis, rebecca s. 58
mccullough, susan rellins 100, 182
mcdaniel, betty 51
mcdonald, louise marie 100, 182
mcdonald, emily lindey 100, 202
mcdonnan, juely hallaway "hally" 113, 193
meiners, linda 111, 171
michaels, katharine gann 100, 193
michener, wanda etanna 100
miedars, patricia margaret 66, 180, 184, 193
minto, lynn lyn 84, 184
mirkovic, melanie ann 113
miron, elizabeth sue 56, 178, 171, 174, 188
mekiers, mary elizabeth 114
melis, christine diane 75
mellett, janet Lynn 100, 171
mellish, juely frances 86, 166, 170, 174, 180, 200
meller, glenys F.
miller, judy Kay 101, 180
miller, margaret elizabeth "puggy" 70, 81, 180, 211
mills, melissa ann 63, 184, 208
mincy, judy
mincey, high anne 114, 206
minichil, catharine barbara 87
minick, myrinda
minor, lorraine kay 101
misk, ann 114
misnik, deborah lee
moates, jennie 101, 184
moatman, patsy maghee 77
moatman, jully mutherson 87
moris, melinda ann 87, 167, 193, 204
morton, maizie cecilia 101, 176
mudgegan, janet 87
myra, debbie e. "bibi" 189, 200
muzz, susanne p. 196, 197
nez, elizabeth ruth 101
neff, nancy Lynn 101
nelson, Beverly elaine 87, 180, 204, 206
newport, paula karae 101
newton, arian louise 101, 206
nichols, dana 87, 193
nichols, rosale 114
nielsen, valerie gail
norton, janet Lynn 75, 193, 200
norris, mary jane 101, 182
norris, sue katharine 88, 183, 188, 193, 204
n'oren, kathleen ann 101, 178
o'kelly, chere "scamy" 88, 184, 187, 190
oliver, francine 88
osland, condie L. 65
oswald, lynne 102
otterman, carol leise 102, 190
otter, ann 114
otter, mary 114
ottmar, rebecca caloum 114
parramann, elaine 102, 189

patten, anne wilson 52, 180, 194
pattin, mary patty 102, 180, 193, 202
pauline, anne meredith 88, 181, 204, 206, 208
pawd, nancy ann 103
peason, patricia louise 76, 166, 181, 200, 210
perry, sue 114, 204
pedersen, bonnie joye 73, 178
pedrick, sue lang 88, 180, 188, 194
pele, nannette
penick, moore s. 114
perkins, glenn dore 74
perry, anne hall "nancy" 114, 168
perris, coraly elizabeth 114
petrafield, conie S. 88
peters, cyndee ann 103, 176, 178
peterson, dana elizabeth 115, 193
peterson, laura Lynn 115
petter, gary 115, 206
phelps, virginia elizabeth 100, 183
pikula, susan patricia 88, 194, 196
pittman, Sharon diane 103
plankett, marilyn ann 115, 193
poolie, ellen sheppard 115, 183
poole, july melinda
porter, melissa anne 103, 171
pound, kenneth s.
preece, adele leah 103, 178, 183
probst, barbara nora 115, 206
pulum, elaine anne 103
pulsifer, susan elizabeth 116
ramo, laura dore
ransborough, robin dore 88, 178, 183, 188
raubaum, susanne d.
ray, sherry leann 103
reid, laura kay
reid, modelyn claire 103, 176
reid, mary elizabeth 106, 116, 206, 208
reiss, calleen m. 88
rey, Jennifer Lynn 50
richards, donna Lynn 116
richards, k. anne 103
rich, sus grace 87
riher, meggie wain 116, 193, 206
robner, dorothy elizabeth "Etc" 60
robinson, rebeca ann 103
robbins, susan elizabeth 116, 182
rogers, karen leise 84
rogers, carrie elizabeth 116
roland, cathy susanne 93, 103, 168, 174, 182
romano, mary edine 116
roos, mary margaret 116, 182
rucker, patty b.
rucker, shapam jean 116
ruffell, thelma lya 104, 184
rusnak, emily tomassene 54, 204, 208
sanders, mary elizabeth 68, 168, 178
sanford, donna joyce 116
sasara, sandra mare 88, 200
schaffel, jo Lynn 68
schiller, lisa elaine 116
schmitt, kathryn anne 104, 174, 193, 210
schub, janet 94, 104, 206
schorr, chere campbell 117
sherman, linda frances 88, 184, 204
shiffeld, emily clare 17
shiffeld, jean carles 94
shel, tanny anne 89, 184, 187, 193, 204, 206
sheppard, margarett elaine 104, 180, 181
shendon, laurie
sheldon, sandy Lynn
shelley, margaret e. 180
shufelt, shan Lynn 55
shurley, sarah marion 89, 202
singleton, crystal Lynn 117, 204
sink, nancy cathy 89, 184, 187
smith, decia annette 174, 184, 204
smith, jacquelyn L. 64
smith, martha marshall 84, 71, 184, 180, 181, 198, 208
smith, mary anne 104, 182, 184, 204
smith, mary susan 104, 166, 180, 184, 199
smith, nancy kathy 117, 178, 190, 210
smith, nancy kirkland
smith, susan 89, 167, 193, 200
smith, susanne L. 104
staylor, shiloh kenneth 51
spelgel, susan Lynn 104
spencer, ota leise 117, 194
spurgill, donna dianna 117
spurluck, edith anne 117
stall, elizabeth pauline 66, 202, 204, 206
stamper, paula jacqueline, 104, 180, 182, 204
staptes, paula theresa 11
starr, paula 104, 178, 180

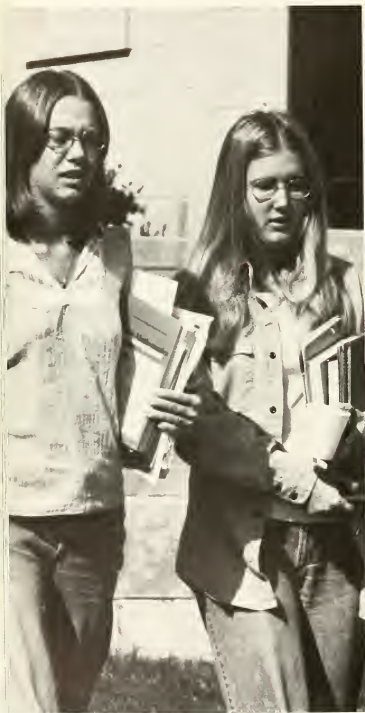
stewart, renee ceola 117
sthefel, rosamary c.
stinson, Anna ruth 117, 193
stoffer, barrie melbaed 89, 191
stout, gertrude behring "trudy" 117, 176, 183
strickland, rebekah glenn 104, 166, 167, 189, 190
strickland, elizabeth ann 104, 104
sullivan, anne 118
sullivan, maice "happ" 118
sumner, saraly ellen 89, 171, 173, 188
sutton, jane hoye 72, 180, 183, 198, 202, 211
swink, caroline elizabeth 89, 184
tanner, melinda dorell 117, 176, 182
taylor, jayne elaine 104
tawatur, irat paula 66, 194
tayler, alyson jenna 118
tayler, juely yvonne 89
teyer, laura elizabeth 89
teyer, elizabeth cecilia 118
teyer, penny j. 118
thoma, olea laetra 90
thoma, lucy ellyn 118, 204
thomel, judy 204
thoid, karl coussal 50, 191, 199, 204, 211
trussell, nancy coral 118, 193
tucker, mary olea 118
tuggle, nolle marie
tumbar, susan E.
turner, annerose 73, 171, 196
turner, lisa marie 90, 182
turner, lynn suze 54, 202, 204
unferried, laura elleanor 74, 184, 187
van vleck, susi Lynn 118
vanlan, mary olea 104
viallet, paula marie 118
viresator, celeste kimberly
viresator, yvonne jane 90, 182
walker, anne english 68, 170, 180, 188, 194, 198, 211
walkers, cathy delorie 104, 171, 176, 180, 204, 206
wambacher, w. anne 77, 174, 180, 198, 199, 204, 211
wainman, martha sue 67, 184
wahn, rena jakson
wells, elizabeth mary 119
welshback, denise dore 64, 193, 197
white, joan 61, 174, 178, 188, 193
white, juely corol 119
whitehead, elizabeth etienne
whitmer, marybeth 99, 104
whitman, mary frances cleveland 90, 200
whitman, meggy johnan 119, 204
whitman, susan leslie
wilburn, elaine cooper 105
wilkas, lydia paula 91
williams, barbara anne 63, 166, 180, 194, 198, 211
williams, frances elaine 91, 167, 171, 173
williams, jean baroar 57, 147
william, wally kay 91, 202
william, susan laura
william, linda wetzencker 61
william, susan 105
william, nancy gale 100, 180, 194
william, nancy clare 91
william, sarah caroline 119, 176
wingo, mary amyly 91, 173, 206
winn, margarett marie 105, 180, 182, 199, 204
winston, chafie corral 119
writers, donna ann 91, 178
workman, sarah w. 105, 183
worthy, jil anne 65, 208
worthy, hie kay
wright, sarah Lynn 119
wyatt, donna F. 119, 167
yarnall, elleanor lill 105, 176, 200
yarnston, susan elaine 105
yaprosk, edith safak 105, 176, 193
yarbrough, lu ann 119
yastender, karen katherine 91
yarraman, paula anne 119
yarraper, stephanna ann 105

growing together . . .

the delicate balance of
give and take . . .









feeling at home . . .
shoulders to cry on
. . . socializing: just
dropping in and just
stopping by . . . spontaneous
study-groups in the dorms . . .







laughter . . .
reaching for the highest
note . . . daughters
of liberty . . . spirit of
'76 . . . the strain
of scientific endeavor . . .





hours of solitary
concentration . . . conception
becomes reality in art
and study . . .
relaxation . . . coffee
in the lounge . . . final
release of tension . . .





looking toward
bright horizons . . .
strolling across campus . . . grasping
for knowledge . . . tennis
anyone . . . the satisfaction
in winning . . . the
agony of study . . .







diligence and
efficiency . . . uninterrupted
train of thought . . . or
no train
of thought at all . . .
five minutes to
spare . . . before questions
and answers . . .





friendships . . .
faculty interest
in campus activities . . . sunny
smiling faces . . . a beer
for black cat . . . two kazooos
in four four time . . .
harmonious hand-clapping . . .







reaching out . . . creating
a community . . . lending voice
to the college hymn . . . being
bound by the goal of our
lifetimes: the pursuit
of liberal learning.





silhouette . . . 1976

9 x 12 . . . 240 pages, 650 copies

80# gloss enamel paper

heads — optima 24 and 30 point

body copy — univers 8, 10, 12 point

kickers — bodoni 14 point

taylor publishing company, dallas, texas

ken austin, representative

color photography by allan deloach of

c. malcolm newell studios, atlanta, georgia

cover and division page art by brandon brame







