




SILHOUETTE '74



Digitized by the Internet Archive
in 2010 with funding from
Lyrasis Members and Sloan Foundation

<http://www.archive.org/details/silhouette197400agne>





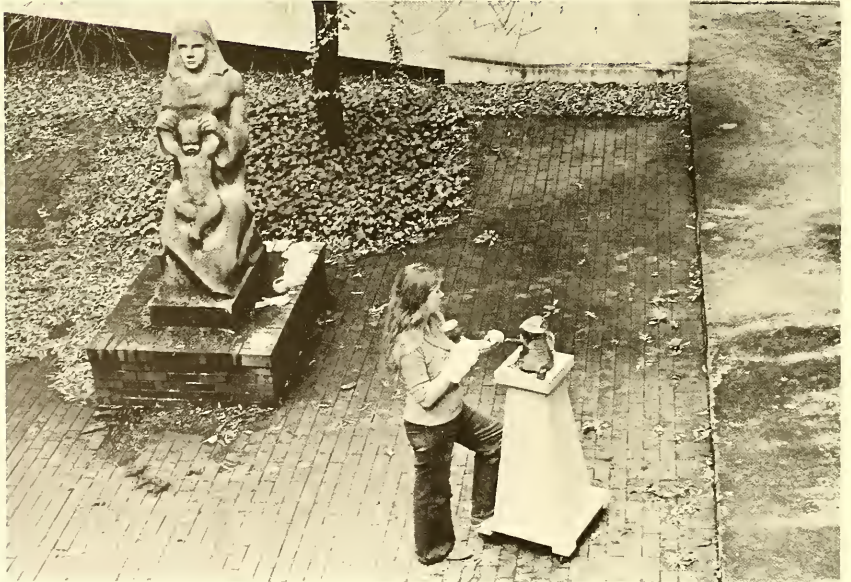
the familiar gone.
a new voice,
different stride, a stranger's face
come,
but the college remains —
a loom strung with constant threads
the pattern varied with time
woven by and of ourselves —
the college being its people
striving
for "the education that gets one
nothing,
but gives one everything" —
questions,
faltering answers,
more questions — always —
learning to learn forever,
common bonds uncommonly meaningful.











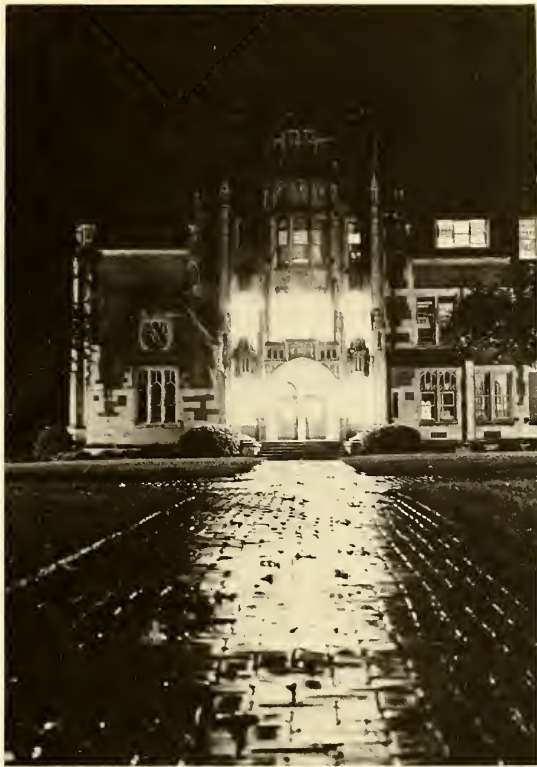


our campus — the Georgian amicably contesting the Gothic . . . mosquitoes . . . loose brick on the steps to Dana . . . cottages . . . a snowstorm of dogwoods in the spring . . . bathtub in the Hub . . . gargoyles . . . mitosis over Campbell's door . . . hockey field . . . sidewalks of jigsaw brick . . . rain-filled hollowed steps of hallowed halls . . . the rustle of pigeons' wings . . . unlighted tennis courts — still . . . ivy on the library . . . heat in Main but the cottages are ice-olated . . . Johnny's apple tree . . . high ceilings . . . old dorms with large rooms — each different . . . left-handed desks . . . missing the tree by the side of the dining hall . . . open observatory — Kahoutek . . . greensward ascamper with squirrels.









learning a language — trying to speak a difficult tongue with a recalcitrant one . . . laughter . . . the Big City . . . getting a pizza the action at P by C . . . conversation in the LDH . . . Georgia Tech football games and fraternity parties . . . discipline — having only a salad for lunch . . . asthma attacks in the library from musty books . . . wrestling with the OED . . . the deathless life stored in books . . . a Friday night effort to forget the week . . . 2 a.m. and nothing's finished . . . lingering over after-dinner coffee . . . the bloom of curlers as the weekend arrives . . . students — never having enough time . . . playing vending machine roulette — win a few, lose a few . . . a fire drill the night bedtime was actually before midnight . . . having a wobbly desk on the day of the mid-term exam.







leaving here perhaps not totally enlightened but hopefully a little brighter.

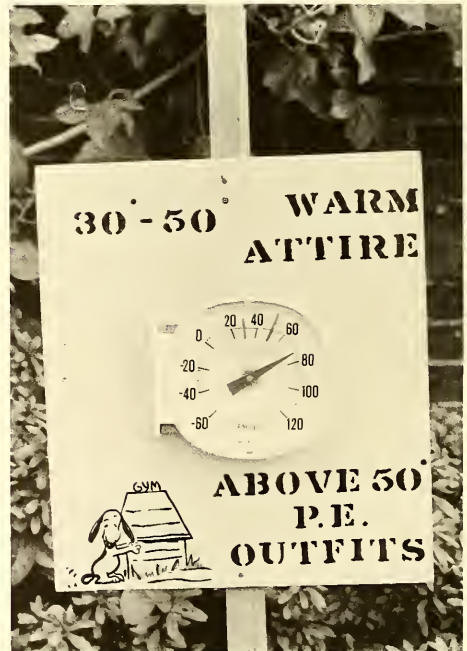
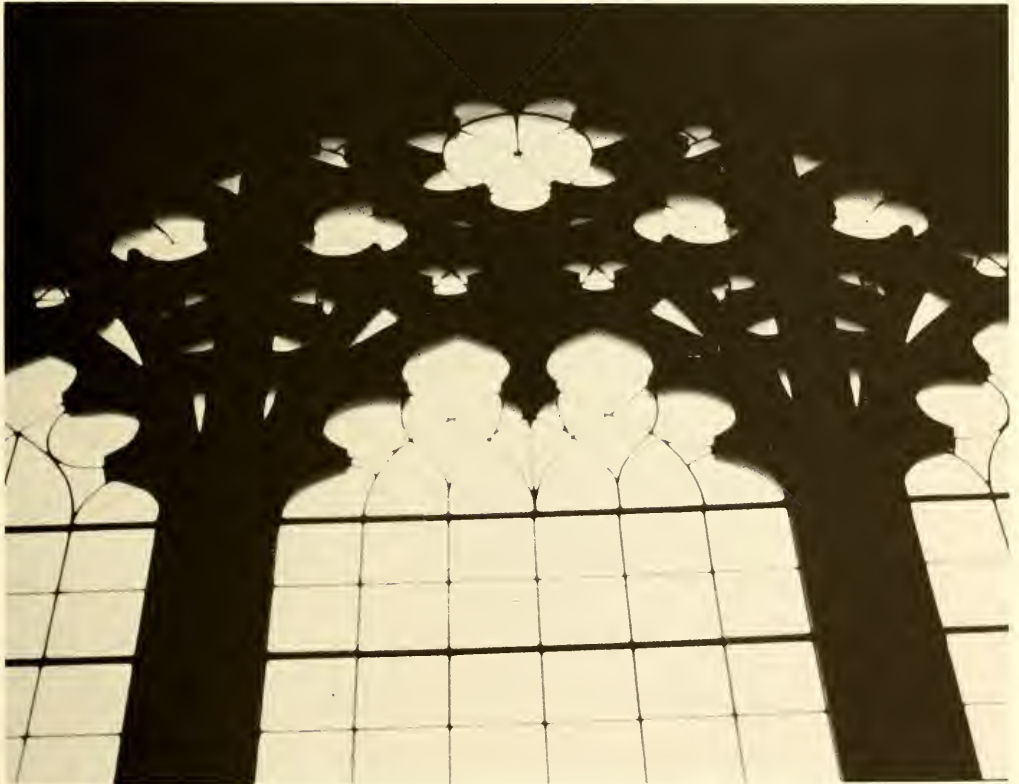






Table of Contents

Opening — 1
Special Events — 18
Organizations — 30
Faculty — 60
Administration — 86
Freshmen — 112
Sophomores — 128
Juniors — 144
Seniors — 156
Ads/Index — 218
Closing — 235





FAN GARY



the campus after the summer . . . bare rooms waiting for students . . . hurrying to see if the requested room is yours . . . looking for friends — old for upperclassmen; new for freshmen . . . lugging in everything . . . wishing for electrical outlets . . . buying extension cords . . . freshmen meeting roommates . . . mass confusion on campus . . . seeing professors again . . . looking for the new president . . . one hour for registration . . . all day for scheduling . . . red-tagged because of a spring quarter course?! . . . buying books . . . upperclassmen and underclassmen bargain . . . Orientation Council trying to order the confusion . . . voices and introductions in the dining hall . . . going by the library to make sure some things never change . . . the calm excitement before the quarter begins . . . admiring tans and new-found thinness . . . Hub party . . . taking notes again . . . trying not to get behind immediately . . . beginning the long windup for Black Cat.





Black Cat —

freshmen choosing a mascot . . . trying to get enough legible script copies for the cast . . . Winnie Pooh or Dennis the Menace . . . last Black Cat for Mickey . . . the bonfire . . . singing . . . Johnny minus a leg . . . field day . . . inebriation after lunch . . . competition — did the sophomores and freshmen win everything? . . . picnic . . . marching into Gaines . . . sister songs . . . The Black Catterbury Tails . . . the Prioress's owls . . . Mary Gay Morgan as Dean Gary . . . the mail room — start of academic excellence . . . the dining hall and "Come to the Infirmary" . . . "Ladies peaceful, ladies happy" . . . not having rain for Stone Mountain . . . planning a picnic . . . who wants to cook? . . . trying to be back to get ready for the dance . . . a beautiful day after all — just for BSA . . . "The Social Council of Agnes Scott College requests the pleasure of your company" . . . the dance with drinks in a real ballroom . . . BSA Sundae Party . . . ice cream and music on the quad . . . remembering that classes come on Monday . . . Black Cat — welcoming the freshmen to a new home.



Senior Investiture —

"a rite of passage" . . . first official occasion for parents to visit since Sophomore Parents Weekend . . . beginning the end . . . Miss Meroney and Loyalists . . . solemn but happy . . . underclassmen relegated to the LDH . . . ushering by sophomores and juniors . . . academic procession — getting the faculty to campus on Saturday . . . brunch for parents and guests . . . an old tradition.







The Lady From The Sea —

scrubbing flats . . . the shop . . . casting . . . elaborate costuming . . . sewing and building
. . . lights and sound . . . rehearsals . . . everything for Ibsen's The Lady from the Sea.

Speakers



Above — Robert Penn Warren; Below — Ti-Grace Atkinson.





Robert Penn Warren . . . Pulitzer prizes for poetry and prose . . . gracious and gentle . . . talking in Winship Lobby with students clustered around him . . . signing autographs . . . reading his poetry . . . remembering names and faces.

Women's Lib *in extremis*, Ti-Grace Atkinson . . . mad dash from the airport just to be late . . . reception in Hub . . . answering questions in Rebekah Reception Room.

Jonathan Freedman on crowding . . . reassurance that cities may be safe for mankind . . . learning rats aren't as adaptable as people . . . questions . . . on designing experiments.

Guarneri String Quartet . . . Bach, Beethoven, Bartok . . . no trains . . . so much from two violins, one viola, and one cello.

David Napier here for Focus on Faith . . . a week of discussion, conferences, and worship . . . the "Christian commitment" at Agnes Scott.

Cesar Chavez . . . boycott Gallo wines . . . United Farm Workers . . . a long struggle — continuing . . . answering questions . . . explaining their position . . . meeting students.





Opposite Page: Above — Jonathan Freedman; Below — The Guarneri Quartet. This Page: Above — Dr. David Napier; Below — Cesar Chavez.





Organizations —

singing Valentines from the Glee Club . . . new time for Rep — 6 on Tuesdays . . . AA paper drive — evidence at the Hub . . . The Profile back on a weekly schedule . . . being flagged down in the dining hall for a language table . . . fall fling at the Black Cat Dance and drinks . . . income tax, consumer smarts, auto mechanics — help in the modern world from BSA . . . AA plans a ski trip; CA prays for snow . . . Aurora for the annual Writers' Conference . . . Faculty-at-Homes with Spirit Committee . . . prospective students enjoying Mortar Board's hospitality . . . drinking policy before Rep again . . . Honor Week . . . Hub parties . . . "ka ka ney" and the "Twelve Days of Christmas" from the Madrigals . . . what in the Dickens is B.O.Z.? . . . Silhouette — publish or perish . . . Organ Guild lunching with Mr. Martin . . . Alpha Psi Omega — notice those initiation rites . . . foreign students dine in Sturgis . . . Arts Council — organizing for spring . . . student service help for Rep — one hour per week . . . Bible verses from CA during exams . . . "A Sentimental Journey into the '40's" from Social Council . . . Orientation Council involving the entire campus in settling in the freshmen . . . discussing open dorms . . . trying to save the cottage system . . . Dr. Napier speaking on Unamuno during Focus on Faith Week . . . Dolphin Club — swimming for Soph Parents Week-end . . . Blackfriars tries to recruit freshmen . . . Young Democrats and Young Republicans still in existence after the big election year . . . Chimo — a country each week in the Profile . . . Junior Class — beginning to choose for Mortar Board . . . Eta Sigma Phi saying good-by to Miss Glick . . .

Organizations —

CA sponsoring Tuesday chapels . . . early election for Silhouette editor . . . Rep rambles on . . . focusing on honor after Focus on Faith . . . SGA constitution revision . . . Miss Zenn lamenting that even the elite mispronounce "Phi Beta Kappa" . . . "Phi Beta Krappa"? . . . Blackfriars — new rates for tickets . . . Arts Council bulletin board . . . Social Council sponsoring mixers . . . Aurora requesting creativity . . . working on the constitution for the new Art Club . . . language clubs with strange names . . . singing songs and looking at films . . . AA sponsoring ping-pong, badminton, and basketball tournaments for the winter blues . . . Silhouette with a deadline in the mid-term week . . . honoring theater work freaks with Alpha Psi Omega membership . . . Music Club becoming active . . . Profile late-nights and a new printer.



Arts Council

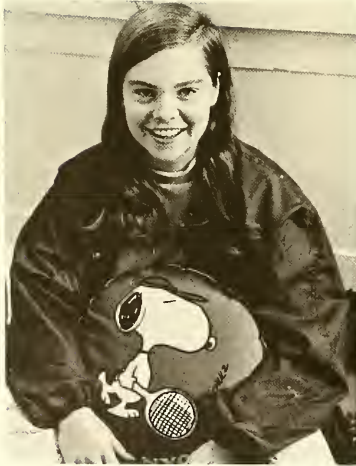


Above — Beth Budd, Mary Frances Shine, Patsy Hilton, Ann Fincher, Joyce McKee, Becky Miller, Liz Lee, Martha Smith; Left — Kay Colvin, Carol Piatnek, Blue Argo, Mr. Fuller, and Mary Praytor.



Athletic Association

Below — Nancy White, Miss Cox, Laurie Williams, Laura Johnson, Lucy Burch, Catherine Pugh, Karen Dick, Marianne Brinker, Diana Lipscomb, Cathy Pirkle, Davara Dye; Below Left — Harriet Graves.



Glee Club



Eva Adan, Rachel Alexander, Susan Balch, Gay Blackburn, Camilla Brannen, Marianne Brinker, Margaret Carter, Lou Anne Cassels, Christa Cline, Pam Coffey, Sharon Collings, Ann Conrad, Joy Cunningham, Beth Davis, Anita Dodson, Coile Estes, Fran Franklin, Susan Grier, Lynn Holden, Sherry Huebsch, Louise Huff, Patty Hughes, Gemma Jernigan, Becky Jewell, Julie Jordan, Carole Langston, Nancy Leasendale, LuAnne Loftis, Jan

MacDonald, Beth McBride, Debbie McBride, Julie McRae, Pat McWaters, Toni Meador, Melinda Morris, Dana Nichols, Janet Norton, Kathy Oates, Fran Oliver, Ann Patton, Susi Pedrick, Elinor Perkins, Carol Piatnek, Deanna Ramsey, Judy Sapp, Janet Sarbaugh, Sandra Saseen, Susan Smith, Cindy Spaugh, Susan Stigall, Martha Sullivan, Ann Turner, Win Anne Wannamaker, Becky Weaver, and Elaine Williams.



Madrigals

Judy Sapp, Janet Sarbaugh,
Frazier Kinnett, Susan Stigall,
Camilla Brannen, Louise Huff, and
Becky Weaver.

Board of Student Activities

Below — Beth Budd, Marty Rutledge, Marie Newton, Susan Skinner, Eleni Papador, Sara Barrett, Karen Dick, Teresa Lee, Brandon Brame, Debbie Welch, Cile Fowler, Jan Fredrickson, Lucy Brockman, Mercedes Vasilos, Mary Gay, Janie Sutton.





Christian Association

Nancy Oliver, Mary Jane Kerr, Wendy Hellings, Lucy Moss, Susan Grier, Lisa Heatley, Margaret Samford, Beth Sandell, Debbie Welch, Debbie Walker, and Henny Leland.



Dance Group

Vickie Burgess, Lucille Palmer, Mary Frances Shine, Patsy Hilton, Nancy White, Beth Budd, Fran Lawless, Cheryl Kitchens, Becca James, Karen Hale, Molly Hand, Sally Turner, Josette Alberts, Cindy Hodges, Denise Floyd, Melanie Elder, Melissa Elder, Polky Tarwater, Elinor Phelps, Margaret Cassingham, Cheryl Houy, Lark Todd.





Dolphin Club

Judy Carol Duncan, Connie Bowen, Lyn Satterthwaite, Susan Grier, Alice Gentry, Janie Sutton, Mary Wade, June Thompson, Betsy Bean, Sally Turner, Roslyn Fretwell, Buff Hatcher, Candy Woolfe, and Mary Jones.

Social Council

Ann Young, Ann Gwynn, Fran Maguire, Della McMillan, Jody Melton, Jamie Osgood, Renee Anderson, Eleni Papador, Lelia Kinney, Mr. Staven, Patty Pearson, Ginny Maguire, Linda Parsons, Barbara Wyche, Cherry Joy Beyselance, Virginia Parker, Betsy Middleton, June Thompson, Anita Kern, and Angie Rushing.



Orientation Council

Lynn Ezell, Barbara Williams, Lee Dillard, Win Anne Wannamaker, Patsy Cook, Louise Dawsey, Miss Merrick, and Teresa Lee.



Honor Court

Becky Thompson, Buff Hatcher, Melisha Miles, Linda Woodward, Lucy Brockman, Anne Walker, Sandy Stogsdill, Charlotte Gillis, and Becky King.



Interdorm

Wendy Whelchel, Linda Hill, Marty Rutledge, Vickie Kirby, Betsy Bean, Celeste Cox, Sarah Harrison, Tricia McGuire, and Ann Young.



Walters Dorm Council

Cheryl Kitchens, Ann Patterson, Jody Melton, Denise Hord, Vernita Bowden, Lark Todd, Marsha Thrift, and Linda Hill.





Main Dorm Council

Left — Mary Frances Shine, Celeste Cox, Marianne Brinker, Tomlyn Barnes, and Ann Darby Tison.



Hopkins Dorm Council

Above — Melissa Stretch, Ann Young, and Betsey Wall.

Inman Dorm Council

Above — Sarah Harrison, Alice Gentry, Brandon Brame, Sally Turner, Debbie Huband, and Frazer Kinnet.



Dorm Councils

Above Left — Cottage Dorm Council — Fran Lawless, Tricia Mcguire, Marene Emanuel, Mamie Grisham, and Teressa Dew; Above Right — Winship Dorm Council — Gail Burr, Vickie Kirby, Lynn Jameson, Jane Brawley, Beth Wickenberg, Polly Crook, Ann Galloway, and Dana deWitt; Right — Rebekah Dorm Council — Martha Sarbaugh, Muffin Crim, Wendy Whelchel, Mary Anne Bleker, and Lynn Satterthwaite.



Music Club



Ann Conrad, Pam Coffey, and Lou Anne Cassels.

Lecture Committee

Debbie Garfield, Mary
Wade, Betsey Wall, and
Joyce McKee.



Eta Sigma Phi

Camilla Brannen, Anne
Walker, Patty Hughes,
Suzi Brinkley, Beth
Meaney, Sally Echols, and
Karen White.



MORTAR BOARD



Mortar Board

Above — Marianne Bradley, Karen Lortscher, Mary Margaret MacLaughlin, Mrs. Bowden, Lib McGregor, Beth Budd, Elinor Perkins, Becky King, Ann Christensen, Dr. Chang, Betty Binkley, Marty Rutledge, and Marta Harley.



Aurora

Ann Fincher, Marta Harley, Ann Loden, JoAnne Williams, and Becky Wilson.



B.O.Z.

Nancy Mitchell, Lee Davis, Becky Wilson, JoAnne Williams, Blue Argo, Beth Wickenberg, Marta Harley, Liz Hornsby, and Miss Trotter.



Profile

Left Above — Eva Gantt, Patty Pearson, Marianne Brinker, Joyce McKee, Jan Fredrickson, Susan Balch, Marene Emanuel; Middle — Bonnie Pedersen, Ann Fincher, Eugenia Laster, Mary Jane Warren; Right Below — Anglynn McGuff.



Rep Council

Robbie Goodall,
Susan Skinner, Eleni
Papador, Lucy Turner,
Lib Mc Gregor, Nancy
White, Teresa Lee,
Pedrick Stall, India
Culpepper, Rose Ann
Cleveland, Mary Gay
Morgan, Ann Christ-
ensen, Betty Binkley,
Margaret Robinson,
Marianne Bradley,
Sherry Huebsch, Jan
Fredrickson, and Alice
Lightle.



Silhouette

Below — Ann Alexander, Reneé Anderson, Anne Callison, Emma Johnson, Teresa Dew, Rose Ann Cleveland, Lynn Schellack, Candy Woolfe, Connie Bowen, Paullin Ponder, Betsy Bean, Vivienne Drakes, Ann Poe; Far Below — Joyce McKee, Ann Clark, Martha Smith, Wendy Wheelchel, Beth Smith, Kay Teien, Kay Griner, Tomlyn Barnes, Phyllis DeVane, Mammie Grisham, Liz Hornsby.



Spirit Committee

Patty Pearson, Kar-
en Tilley, Mary Gay.



Chimo

Susan Leong, Jackie
Smith, Sarah Harrison,
Lily Chan, Eve Adan, Jill
Johnson, Nellie Jitsuya,
Jennifer Frank, Lydia
Bendick, Patricia Aguilar,
Sarah Brooke, Yinka
Edun, Beth Abbott, Karin
Horstmann, Jean Williams.



Young Democrats

Dorothy Wilkes, Linda Parsons, Taffy Stills, Mary Gay, Sandra Saseen, and Melissa Stretch.



Young Republicans

Mary Price, Sandy Stogsdill, Anita Kern, Lea Grimes, Henny Leland, Gail Burr, Becky Zittrauer, Mary Frances Shine, Lee Dillard, Pam Hamilton, Kimberly Erickson, and Karen Close.



Blackfriars

Anne Walker, Ruth McAliley, Ruthie McManus, Julie McRae, Ann Gallo-way, Mr. Evans, Muffin Crim, Carole Langston, Bungi Harris, Liz Lee, Miss Green, Elizabeth Knight, Susan Stigall, Debbie McBride, Elaine Williams, Eva Gantt, Becky Miller, Annette Cook, Karen Lortscher, Marty Howard, Marianne Bradley, Jamie Osgood, Sandra Saseen, Carolyn McKinney, Sarah Brooke, Eleanor Phelps, and Ellen Phillips.

Alpha Psi Omega



Mr. Evans, Marianne Bradley, Sarah Brooke, Ruthie McManus, Susan Stigall, Carolyn Mckinney, Becky Miller, Liz Lee, Martha Howard, Jamie Osgood, Miss Green, Karen Lortscher.



Faculty — Administration —

new president's program — "Meet the Students in Rebekah" . . . evaluating the faculty . . .
trying to find a decent greeting card in the bookstore . . . the smell of pipe tobacco . . . filling
out the PCS and eventually the Agnes Scott supplement . . . faculty who give out exams —
always too slow and always too cheerful . . . smell of coffee from the faculty lounge . . .
4-hole golf course — Miss Cox's pride . . . Mr. and Mrs. Perry eating dinner together in the
dining hall . . . reading lists . . . bibliography cards and footnotes . . . breaking in the new
faculty; being broken down by the old faculty . . . meeting prospective faculty members . . .
blackboards . . . Christmas tree in Buttrick with homemade decorations . . . trying to get cre-
dit for summer school . . . remembering how long to wait for a late professor . . . filling out
three schedules every quarter for the Dean of Students' Office . . . Pepperdene time — starting
class early and ending it late . . . making sure Mrs. Lindig has the college calendar up to date
. . . "Me and My Shadow" — new song from the Vocational Office . . . presidential pep talk in
the winter of our discontent . . . Mr. McNair's letters to sophomore parents . . . wondering
just how late one can turn in a paper . . . faculty advisors and student counsel . . . asking Mrs.
Turner for money lost in the Coke machine . . . Security coping with 2 major rules changes in
one year . . . filing for a transcript . . . waiting in line for the Xerox machine . . . scheduling
for student service . . . meeting a class in the library . . . getting help from Mr. Lewis for Black
Cat . . . seeing faculty husbands and wives during Junior Jaunt . . . being cheered during fall
quarter exam period by faculty and administration carolers . . .

Faculty —

standing behind a lectern, sitting on the desk, keeping sporadic office hours, writing on the blackboard, inviting students to homes — "And gladly wolde he lerne and gladly teche" . . . academic processions . . . Faculty Wives Fair for Martin Luther King, Jr. Scholarship . . . Friday afternoon faculty meetings . . . third Buttrick . . . new babies for the Woods' and Matthews' . . . faculty swim — every day for Miss Zenn . . . peppy Mrs. Pepe . . . Mr. Simpson's frigid sea urchins . . . syllabii . . . faculty help for Sophomore Parents Weekend . . . Mr. and Mrs. Sheats — matched twosome . . . Mr. McNair pouring cider for Ti-Grace Atkinson's reception . . . Mr. Martin's extra flourish for the third verse of hymns . . . Miss Winter on the southern accent . . . playdays with Miss McKemie . . . Mrs. Pepperdene's face wreathed in smiles now that the book is all Donne . . . the true faculty talents revealed in Junior Jaunt . . . recommendations for graduate school and jobs . . . Miss Meroney lunching with students . . . conferences for freshmen English papers . . . the stocked aquarium as one enters Campbell . . . Felix Niger — the history of Black Cat from Miss Bradham . . . AAUP . . . initials on major cards . . . Mittagstisch . . . Mrs. Pepperdene with prospective students . . . philosophical sermonettes from Mr. Parry . . . Environmental Symposium '74 — Mr. Leslie and Mr. Orr . . . a fond farewell to Misses Bridgman, Dunstan, Glick and Winter . . . fellow students.





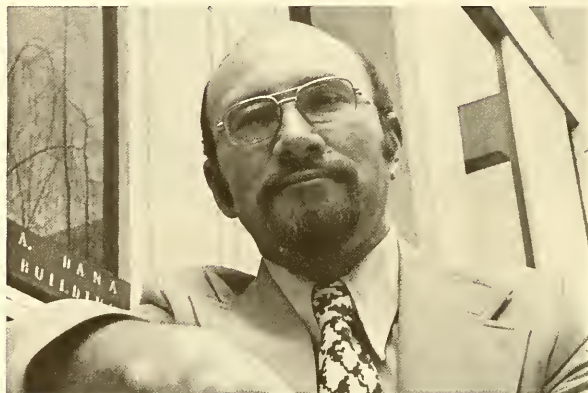
Administration —



homemade cookies from the dining hall . . . ASC scavenger hunt — freshmen orientation to the library . . . Bertie's candy jar . . . Miss Currie's moved into a date parlor . . . checks for multiples of \$5 . . . long lines for registration . . . bookstore — smiles even when selling exam envelopes . . . exam teas from the senior residents . . . Dean Gary's computer for Grade Point Average . . . scouring the South for the Class of '78 . . . Mr. Hannah walking his dog . . . ASC first — the president with a drink at the Black Cat Dance . . . course changes with Dean Petty . . . Christmas presents to ASC employees . . . the note on your grades from the Registrar's office . . . entire Business Office at an informal convocation . . . getting to the bank before it closes on Friday afternoon . . . feigning madness only to learn that Dr. Phrydas really does exist . . . seeing Mrs. Wimpy upstairs instead of in the LDH . . . the enticing films of the admissions staff . . . the drinking RC's and the Administrative Committee . . . meeting in the Hub with the Trustees . . . Miss Murphy's bulletin board — summer camps and pay scales . . . notice from the Dean of Students' Office about how to close your window over Christmas vacation . . . wondering what the Office of Development develops . . . parking tickets . . . the men raking leaves and sowing grass seed for two months . . . being with the College in every season.

Faculty — Art

Above Right — Charles A. Leonard III; Center
Left — Robert F. Westervelt; Center Right;
Leland C. Staven; Below — Marie Huper
Pepe, Chairman.





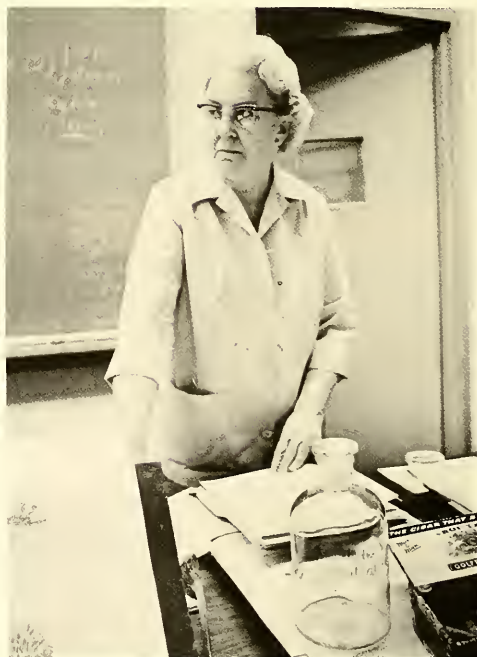
Bible And Religion

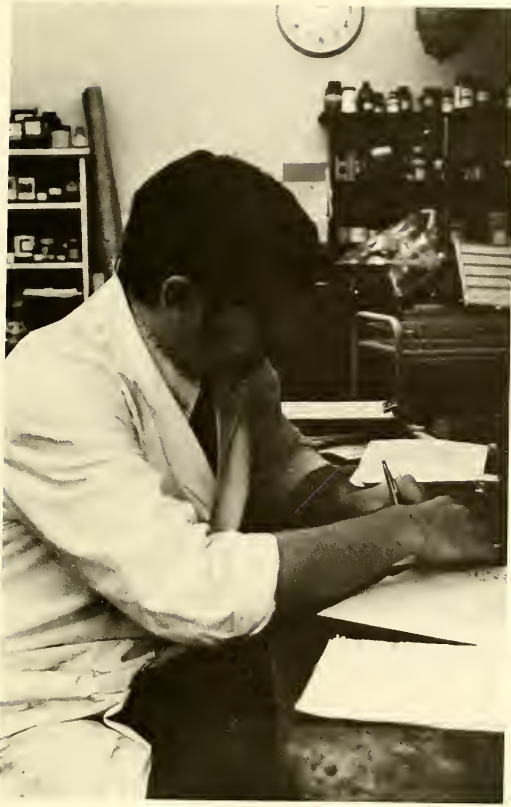
Above Left — Kwai Sing Chang; Below Left — Mary Boney Sheats, Chairman; Below — Paul L. Garber.



Biology

Above — Martin A. Bordner;
Below Left — Sandra T. Bowden;
Below Right — Nancy P. Grose-
close, Chairman.





Above Left — Thomas E. Simpson, Above Right — Josephine Bridgman, Below — Mary T. Kelly.

Chemistry



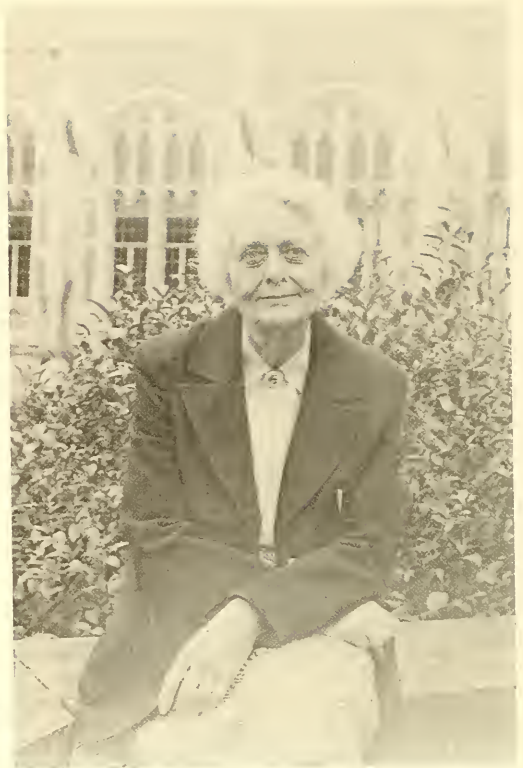


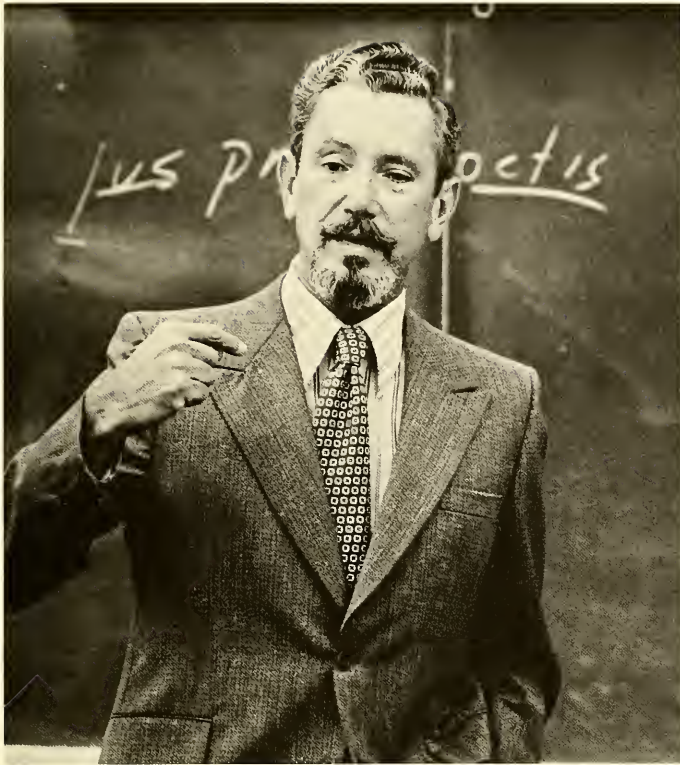
Far Left — Alice J. Cunningham; Above Center — Mary W. Fox; Middle Left — Julia T. Gary; Middle Right — W. Joe Frierson, Chairman; Below — Marion T. Clark.



Classics

Above Left — Elizabeth G. Zenn; Above Right — M. Kathryn Glick, Chairman; Below — Myrna G. Young.





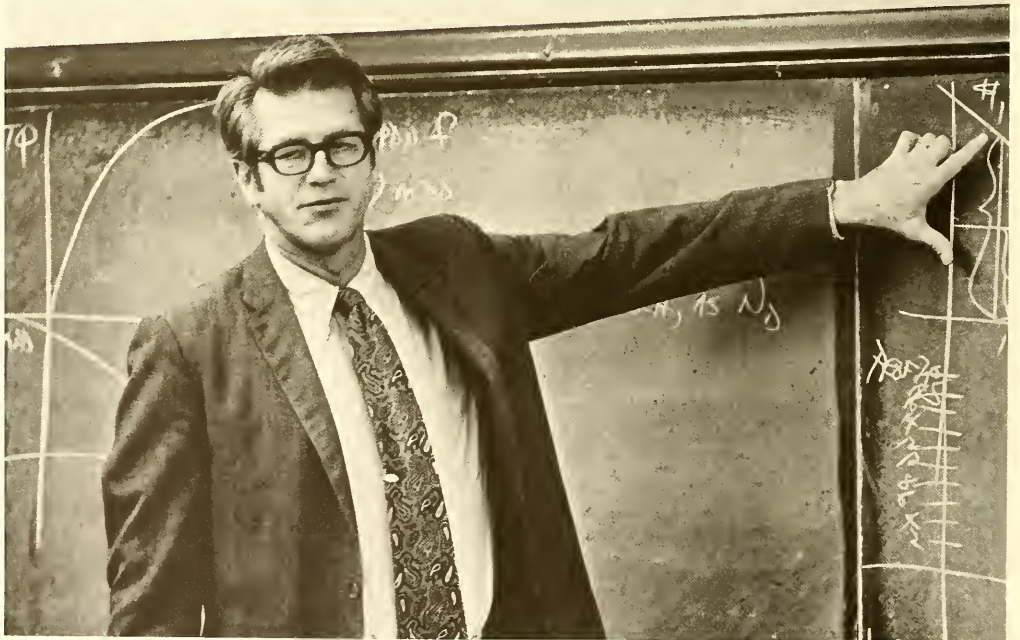
Economics And Sociology

Left — John A. Tumblin, Jr.; Below
Left — Paul R. Mills, Jr., Chairman;
Below — Constance A. Jones.





Right — William H. Weber III; Below — Edward C. Johnson, Jr.





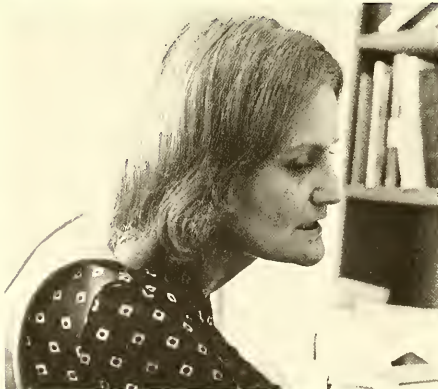
Education

Above Left — Margaret P. Ammons, Chairman; Center Left — Lawrence R. Hepburn; Below Left — Jacqueline Thornberry; Below Right — Nathalie F. Anderson.



English

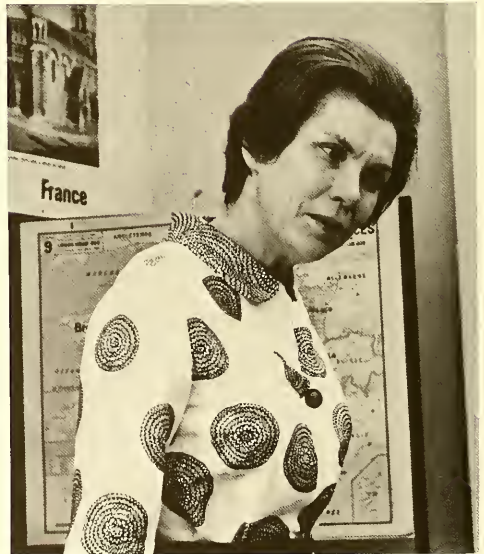
This Page: Above Right — Linda Lentz Woods;
Above Left — Margaret W. Pepperdene, Chairman;
Middle Right — W. Edward McNair; Below Left — Jo
Allen Bradham; Below Right — Jack L. Nelson. Op-
posite Page: Above — B.W. Ball; Middle Left —
Mark S. Siegchrist; Middle Right — Patricia G.
Pinka; Below Left — Gretchen Schulz; Below
Right — Margaret G. Trotter.





French

Below — Benjamin C-P Bao; Right — Vladimir Volkoff;
Below Right — Huguette D. Kaiser.

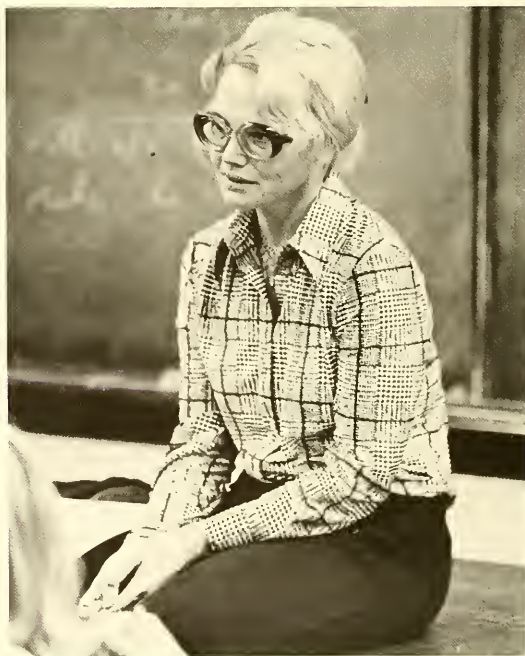
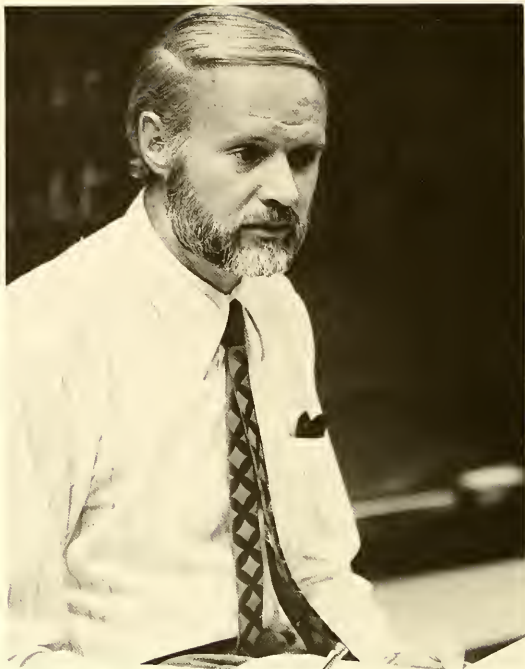




Left — Claire M. Hubert; Right — Chloe Steel, Chairman; Below — Raphael Molho and Mary Virginia Allen.



German



Above — Dewey W. Kramer; Above Right —
Gunther Bicknese, Chairman; Below Right — In-
grid E. Wieshofer.

History and Political Science

Above Left — John L. Gignilliat; Above Right — Geraldine M. Meroney; Below Left — Augustus B. Cochran III; Below Right — David W. Orr.



Above Left — Penelope Campbell; Above Right — David W. Robson; Below — Michael J. Brown, Chairman.





Mathematics

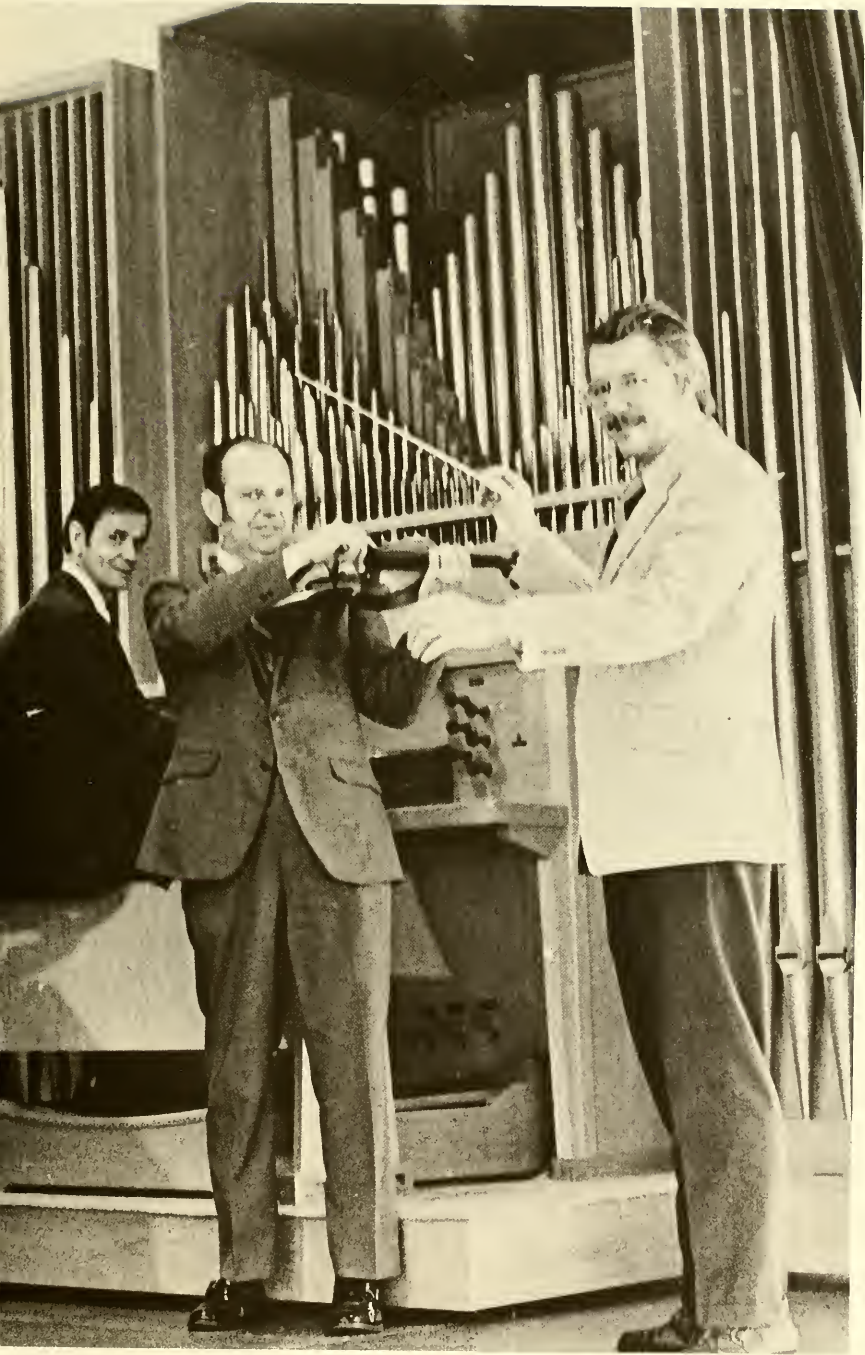
Above Left — Virginia Arnold Diehl; Above Right — Sara L. Ripy, Chairman; Below Left — Ronald B. Wilde; Below Right — Robert A. Leslie.



Music

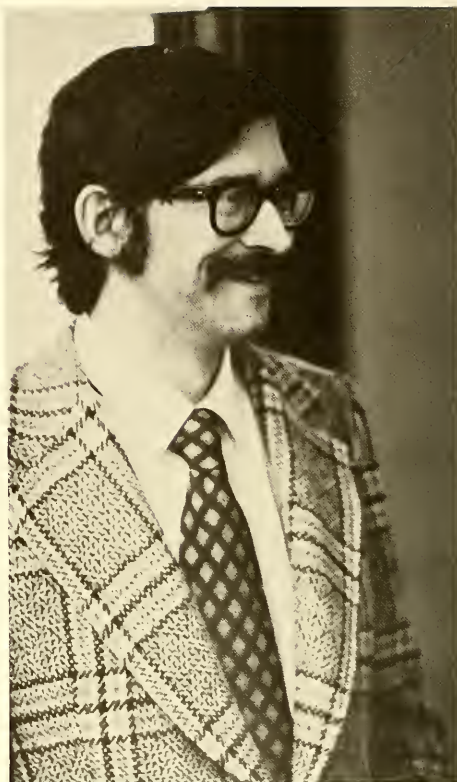
Left to Right — Jay C. Fuller; Michael McDowell, Chairman; Elizabeth E. Chapman; Raymond J. Martin; John L. Adams; Theodore K. Matthews.





Philosophy

Above Left — Linda B. Cornett; Right — Richard M. Wolters;
Below — Richard D. Parry, Chairman.





Physical Education

Above Left — Kate McKemie, Chairman; Above Right — Margaret Louise Cox; Left — Marilyn B. Darling; Right — Kathryn A. Manuel.

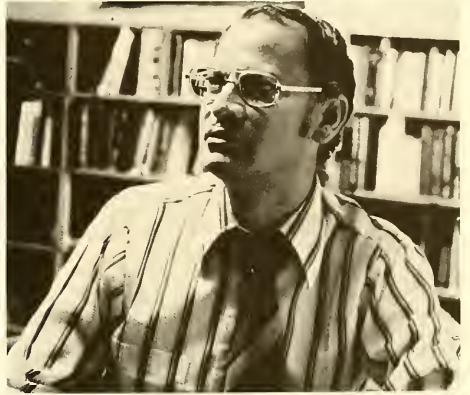
Physics

Above — George H. Folsom; Below — Philip B. Reinhart.



Psychology

Above Left — Lee B. Copple, Acting Chairman; Above Right — Thomas W. Hogan; Below Left — Betsy B. Kahan; Below Right — Jacqueline N. Hill.



Spanish

Above — Constance Shaw-Mazlish; Below Left — Florence J. Dunstan, Chairman; Below Right — Eloise Herbert.





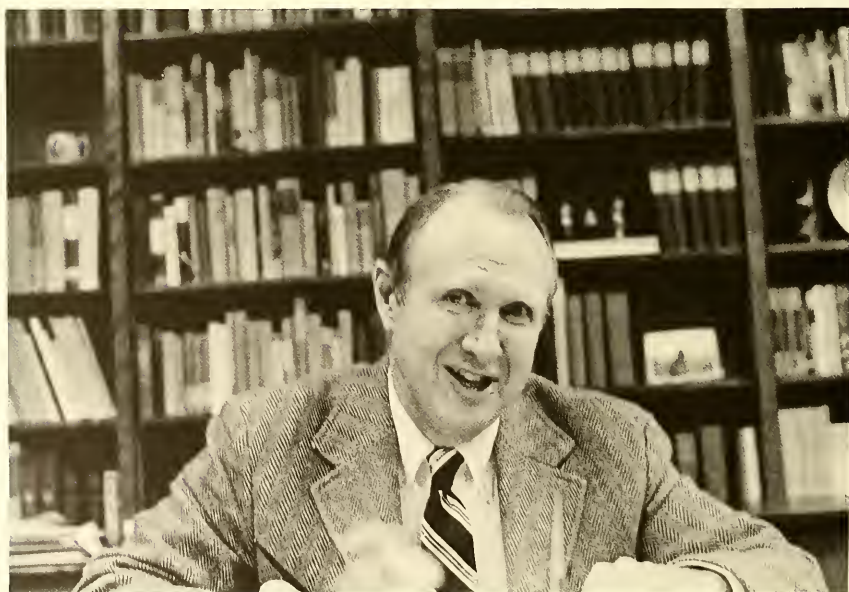
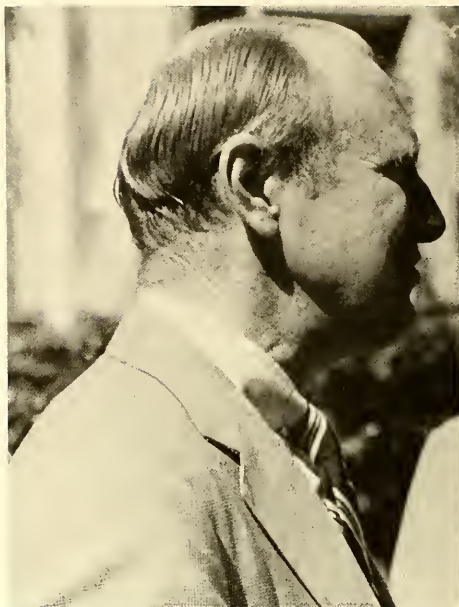
Speech And Drama

Above Left — Roberta Winter, Chairman;
Below Left — Elvena M. Green; Below Right
— William H.C. Evans.

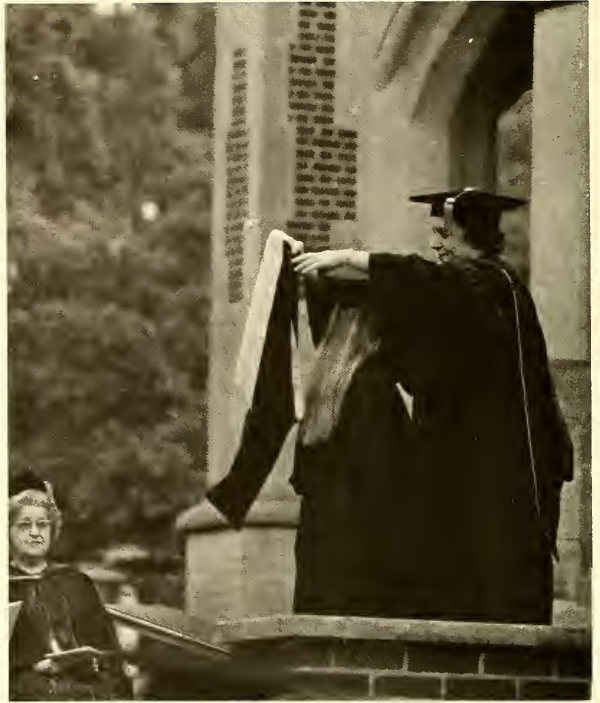


Office of the President

Marvin B. Perry, Jr., President.







Office of The Dean of Faculty

Opposite Page: Julia T. Gary, Dean of Faculty. This Page: Mildred Love Petty, Assistant Dean of Faculty.



Office Of The President

Above — Carlene
Duncan, Secretary;
Below — Mary Al-
verta Bond, Ad-
ministrative Assis-
tant, Secretary to
the President; Sec-
retary to the Board
of Trustees.





Office of the Dean of the Faculty

Above — Katherine
S. Turner, Secretary
to the Dean of
Faculty; Below —
Kathryn G.
Turenne, Secretary
in the Office of the
Dean of Faculty.





Office of Admissions

This Page: Ann Thompson, Assistant to the Director of Admissions. Opposite Page: Above — Laura Steele, Registrar and Director of Admissions; Below — Secretaries to the Registrar and Director of Admissions: Linda Anderson, Jean Davis, and Deborah Neely.



Office Of The Dean Of Students

This Page — Roberta K. Jones, Dean of Students.
Opposite Page: Above — Mollie Merrick, Assistant Dean of Students; Below Left — Mary L. Currie, Assistant Dean of Students and Director of the Student Services Program; Below Right — Ione Murphy, Assistant Dean of Students and Director, Office of Career Planning.







Above — Mary Lindig, Secretary to the Dean of Students; Below — Wanda H. Stevenson, Secretary, Office of the Dean of Students.



The Library



Above Left — Mary Carter, Assistant Reference Librarian; Above Right — Lolla Mangin, Readers Service Assistant; Below — Elizabeth Ginn, Periodicals — Reference Librarian; Barbara Oglesby, Assistant Librarian and Reference Librarian; Carol Culpepper, Assistant Cataloguer; Kathy Bell, Acquisitions Assistant; Brenda Pritchett, Technical Services Assistant; Mildred Walker, Secretary. Previous Page: Lillian Newman, Associate Librarian and Reference Librarian; Dale F. Luchsinger, Librarian.





Office of Public Relations And Development

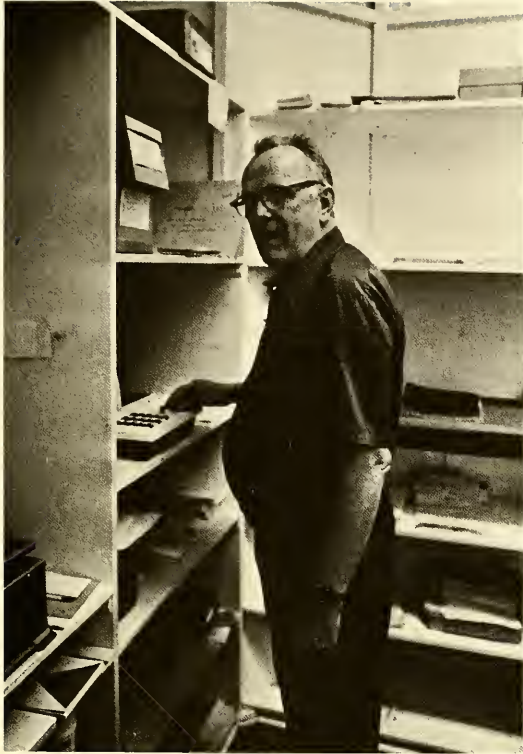
Above — Edward McNair,
Director of Public Relations;
Below — Paul M. McCain,
Vice President for
Development.





Above Left — Andrea Helms, News Director and Assistant to the Director of Public Relations; Above Right — Janet Pirkle, Secretary in Office of Development; Below — Dorothea Markert, Development Records Officer and Assistant to the Director of Public Relations.





Business Office

Above — Louis P. Cox, Manager of the Post Office;
Below Left — Sue White, Secretary and Juliette M. Tiller, Accounts Payable and Payroll Officer; Below Right — Joe B. Saxon, Supervisor of Buildings and Grounds.





Treasurer's Office

This Page: Above — Kate B. Goodson, Accountant and Assistant to the Treasurer; Below — William M. Hannah, Treasurer. Opposite Page: Above — Ann Potts, Assistant; Below Left — Janet Gould, Secretary; Below Right — Ann Stapleton, Recorder and Financial Aid Officer.



Alumnae Office

Above — Deborah Fleming, Alumnae Fund Coordinator and Assistant to the Director of Alumnae Affairs; Shelia L. Wilkins, Secretary; Mary L. Currie, Manager of the Alumnae House and Assistant in the Alumnae Office; Carey Craig, Associate Director of Alumnae Affairs.





Dining Hall Staff

Below — Loise Wimpy,
Supervisor; Barbara F.
Saunders, Dietitian; Fae D.
Robinson, Assistant Dieti-
tian.





Infirmary

This Page: Above Right — Rosemonde Peltz, M.D.; Above Left — Malcom G. Freeman, M.D.; Below Right — Armand Hendee, M.D.; Below Left — Irene A. Phrydas, M.D.; Opposite Page: Above — Elsie Boyer, LPN; Below — Barbara Richardson, RN, Margaret Copple, RN.



Bookstore

Above — Elsie P. Doerpinghaus, Assistant; Below — Vernita M. Barnett, Manager.



Below — Assistants to
the Dean of Students:
Faye D. Parks, Lou H.
Voorhees, Concepcion
P. Leon, Mary B.
Queen, Virginia S.
Hall, Roberta C. Sulli-
van.



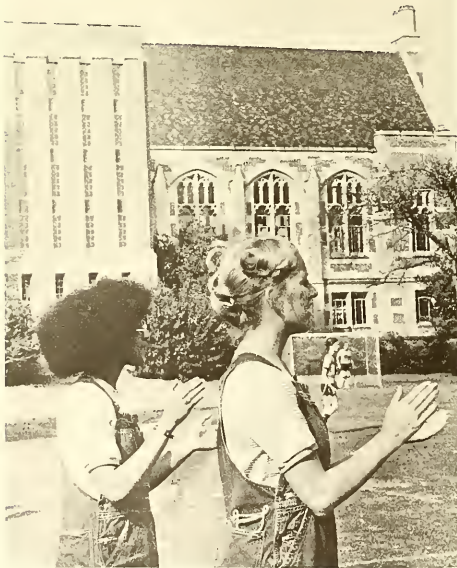


Classes —

seeing friends after a summer's absence . . . the community in Convocation . . . Hub parties . . . fellow martyrs in language lab . . . true friends — those who run laps with you . . . popcorn parties . . . borrowing notes . . . cramming together . . . talking with your roommate in the middle of the night . . . frequent study breaks . . . "can I borrow?" . . . always sitting in the same seat in class . . . the sound of typewriters punctuating the end of the quarter . . . swapping hostess duty and phone co-op . . . sharing baby oil while sunbathing . . . movies during exam period . . . cheerful cherubs . . . bulletin boards . . . open mailboxes . . . cutting class . . . going to lunch at 11:45 . . . walking into greater Decatur on Friday afternoon . . . the close of Shutley's . . . buying the Donne book . . . eager for the Frost Centennial . . . "the kids are coming" from Georgia Retardation Center . . . alone in the dorm with no one to talk to on Saturday night . . . organic tests every other Friday . . . hearing the chimes from Decatur . . . firedrills at 12:30 . . . going to classes in the dark but playing tennis at 7 p.m. . . . training ourselves not to hear the midnight freight . . . selling books to underclassmen . . . picking up mail for friends . . . cussing . . . making time for lectures . . . rigor mortifying in the reserve room . . . patronizing vending machines . . . trying to maintain a thought over lawn mowers and Miss McKemie's P.E. classes . . . discussing shades of finger polish . . . gathering in the Hub to watch the CBS news . . . ushering . . . reading posters . . . daily checking the weekly calendar . . . changing from Rebakah to Buttrick time . . . saying cheerful things to one's plants . . . playing cards to avoid study . . . listening to music majors practicing at all hours . . . decorating the campus for Black Cat . . . April Fool's Day . . . student art work in Dana . . .

Freshmen —

being sponsored by juniors and helped by sophomores . . . seeing advisors . . . becoming socially oriented, i.e. suffering through rush among Georgia Tech Greeks . . . Happy Birthday to Dennis . . . Dennis who? . . . assigned seats at class meetings . . . how to study, by Dean Petty . . . how to win at hockey, by Miss McKemie . . . the study of women in English 101 . . . out past LTL for the Black Cat Dance . . . homesickness . . . not making straight A's any more . . . not making any A's any more . . . huge phone bills . . . switching roommates and rooms . . . a surfeit of sexual imagery . . . having a beautiful fall when everyone promised rain . . . handbook orientation . . . the Honor System . . . enthusiastic basketball players beating the seniors in the cottages . . . fall elections . . . language lab . . . getting back the first English paper and discovering that one's calling in life seems to be writing wrongs . . . spending afternoons in labs . . . being told by upperclassmen how lax one's social regulations are . . . football games and drinking . . . the first exam period — exhaustion . . . learning the bus schedule . . . hoping for unlimited cuts . . . adjustment and acclimatization . . . blind dates . . . the library . . . trying to learn the names of all the professors . . . gaining weight and dieting . . . winter quarter blues . . . having a home-town honey . . . going to P by C . . . actually knowing people in high school . . . bringing stuffed animals . . . starting to smoke . . . starting . . .





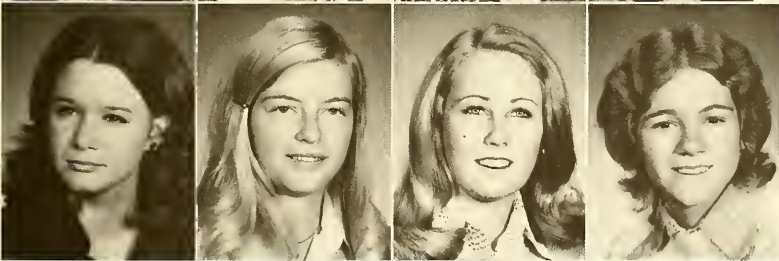
Ellen Abernathy
Josette Alberts
Anne Alexander
Renée Anderson



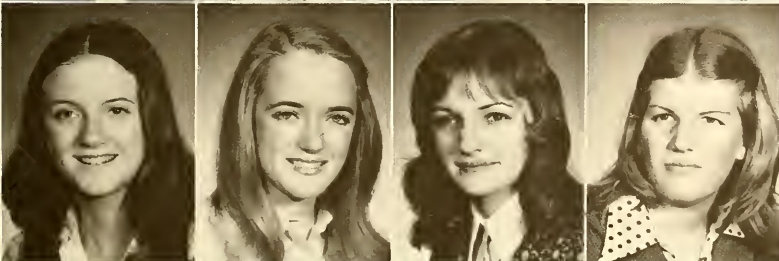
Carroll Auclair
Evelyn Babcock
Susan Babinchak
Mary Allison Ballew



Mary Anne Barlow
Lydia Bendeck
Holly Anne Bennett
Karen Bittenbender

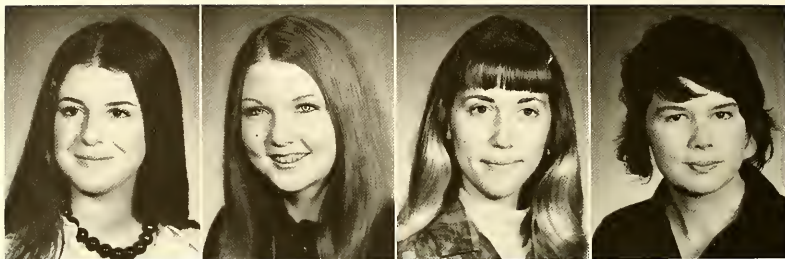


Mary Collins Blackmon
Anne Bond
Katharine Booker
Mary Crist Brown

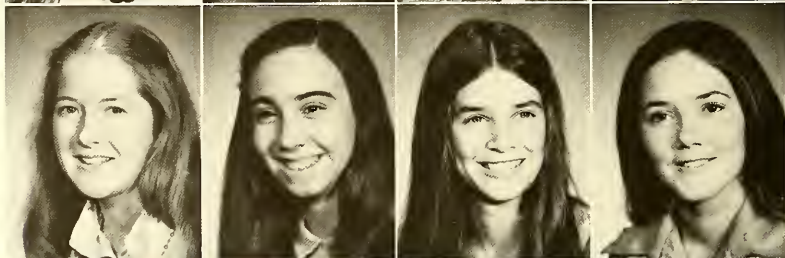


Nancy Burnham
Anne Callison
Doborah Capelle
Valerie Clark

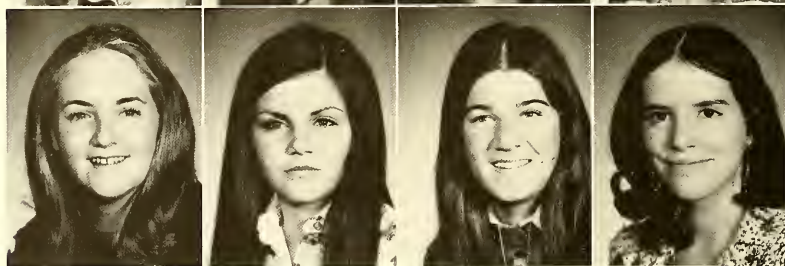
Christa Cline
Sharon Collings
Ann Conrad
Annette Cook



Carolyn Corbett
Cathryn Crane
Joy Cunningham
Cynthia Davis

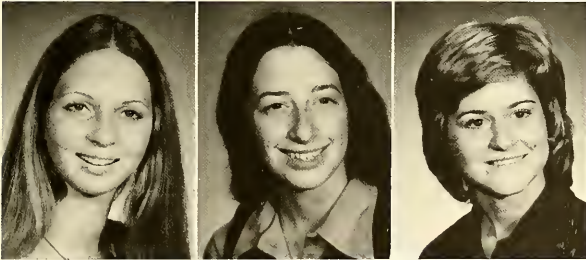


Patrice Davis
Renée Davis
Dana deWitt
Anita Dodson

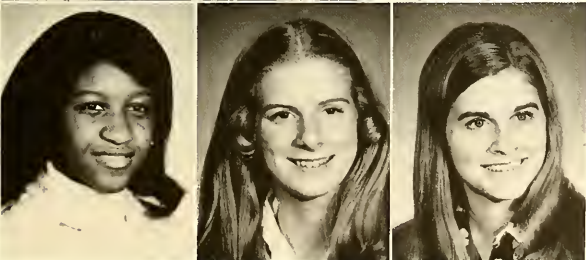




Elizabeth Doscher
Olayinka Edun
Melanie Elder

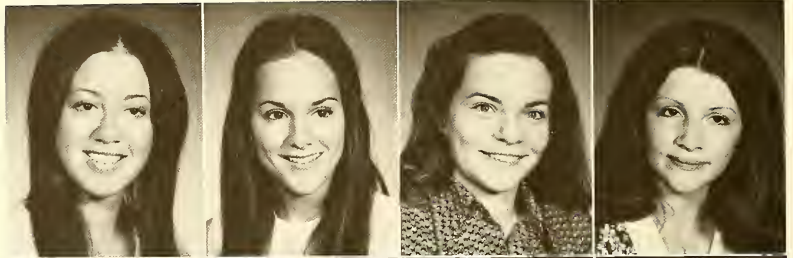


Melissa Elder
Anne Elliot
Patricia Fishel

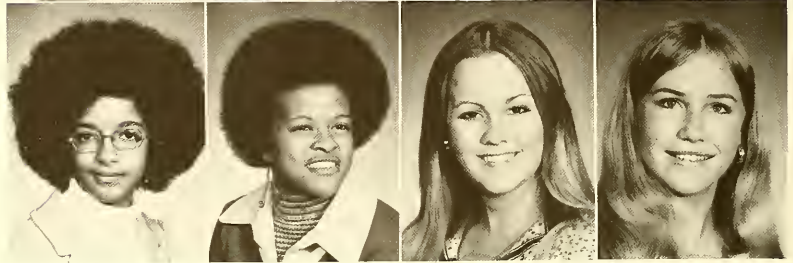


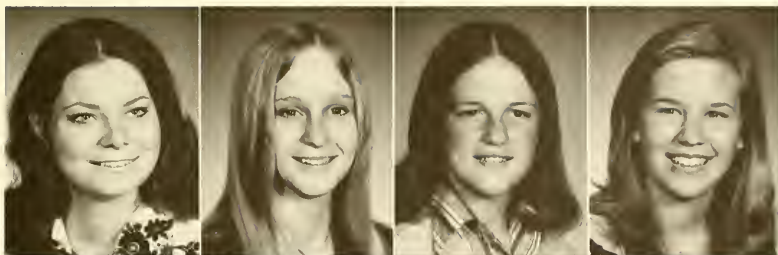
Kandace Fitzhugh
Ellen Fort
Sylvia Foster

Jane Fraley
Elaine Francisco
Jennifer Frank
Fran Franklin

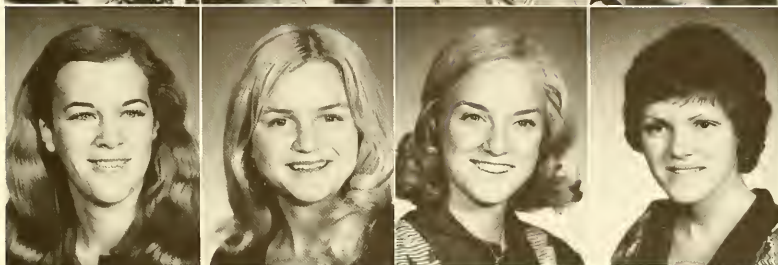


Audrey Grant
Karen Green
Nancy Guerro
Gay Gurley





Sarah Hager
Susan Hall
Charmian Hamilton
Glenn Hankinson



Juliette Harper
Virginia Hiisman
Cynthia Hodges
Lynn Holden







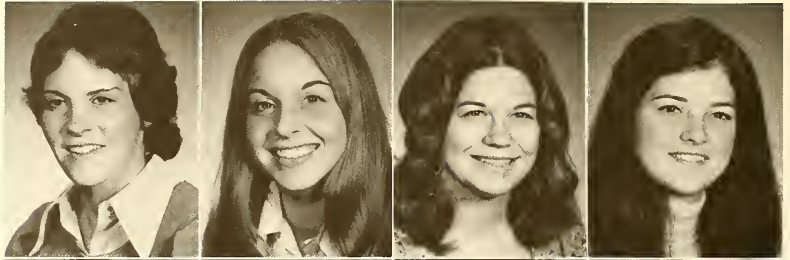
Suzanne Holloman
Cheryl Houy
Anne Hull
Mary Ihley



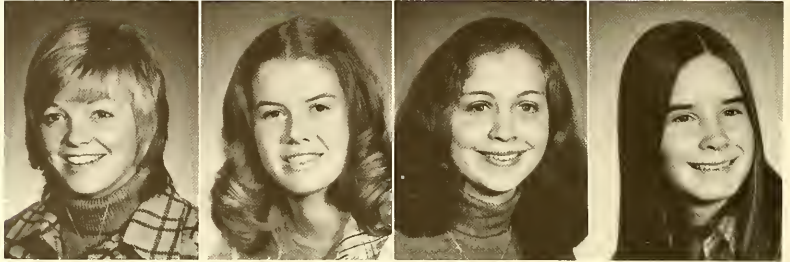
Angela Ingram
Caroline Inman
Sue Jinks
Emma Johnson

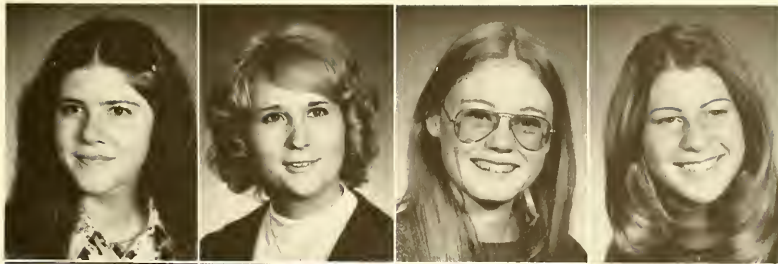


Rebecca Jones
Rhett Jones
Bonnell Jopling
Ruth Jowers



Terri Keeler
Mary Ann Kruskamp
Kathryn Kussrow
Mary Lambright





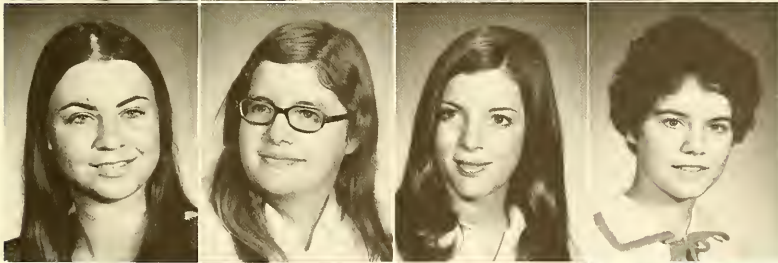
Melissa Landon
 Carole Langston
 Eugenia Laster
 Katherine Lawther



Susan Leong
 Gloria Lewis
 LuAnne Loftis
 Marianne Lyon



Georganne Major
 Eleanor McCain
 Ruth McMullen
 Patricia McWaters

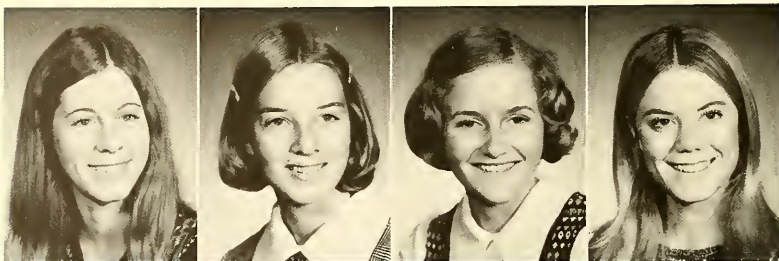


Toni Meador
 Julia Midkiff
 Diane Miller
 Teresa Moore



Melinda Morris
 Daisy Morton
 Janet Mushegan
 Beverly Nelson

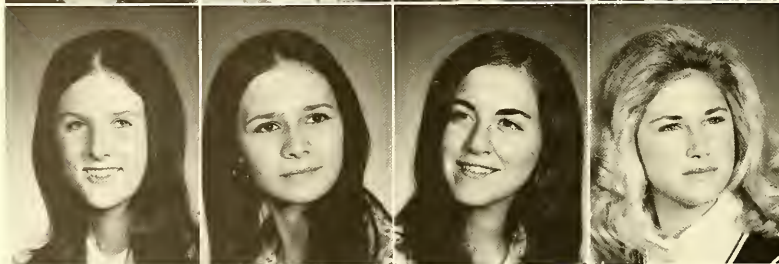
Holly Newberry
 Katherine Oates
 Clare O'Kelley
 Francine Oliver



Anne Paulin
 Susi Pedrick
 Cynthia Perkins
 Anne Pesterfield



Julie Pflughaupt
 Carol Piatnek
 Susan Pirkle
 Julie Poole





Sandra Saseen
Nancy Setzler
Linda Shearon
Tamara Shell

Sarah Shurley
Virginia Singeltary
Nancy Sisk
Deborah Smith



Susan Smith
Cynthia Spaugh
Pat Stephens
Caroline Swink



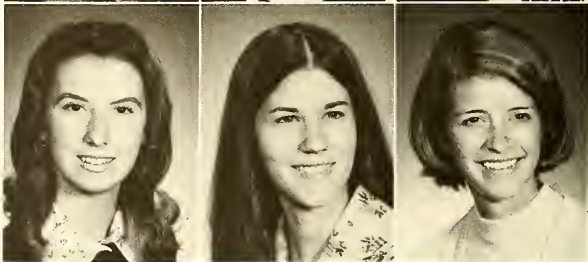
Gail Tatum
Vance Thompson
Lois Turner
Patricia White



Catherine Whitehead
Frances Wickes
Lydia Wilkes



Elaine Williams
Kay Williams
Lynn Wilson



Nancy Wimbish
Donna Winters
Diane Woodward





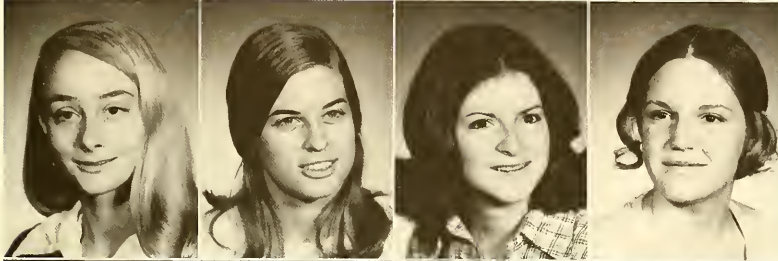
Sophomores —

getting ready for Soph Parents Weekend . . . feeling older in the fall . . . being at home on campus . . . Winnie the Pooh . . . trying to finish requirements and pick a major . . . to transfer or not to transfer . . . dwindling social life after freshman year? . . . winning the scholarship trophy . . . nostalgia as the sister class graduates . . . last year of P.E. . . . knowing all the words to "God of the Marching Centuries" . . . getting ready for Soph Parents Weekend . . . taking one's first upper-level courses . . . wishing for a car . . . finishing the Student Directory before Thanksgiving . . . having enthusiasm . . . knowing where professors' offices are . . . Sophomore Slump . . . Raggedy Ann . . . getting ready for Soph Parents Weekend . . . trying to help or hinder freshmen . . . learning which professors to take . . . finding you've wasted 9 hours . . . beginning to work at Western Sizzler . . . sunbathing in front of the infirmary . . . volunteering . . . getting ready for Soph Parents Weekend . . . replacing throw rugs with old carpets . . . ignoring the hall phones . . . taking tennis or fundamentals . . . collecting Dante's glasses . . . learning the way to Manuel's . . . never using one's own iron or laundry rack . . . supporting all campus organizations . . . asking friends for blind dates . . . partying with parents during Soph Parents Weekend . . . no more class meeting in Maclean . . . halfway through one's college career . . .

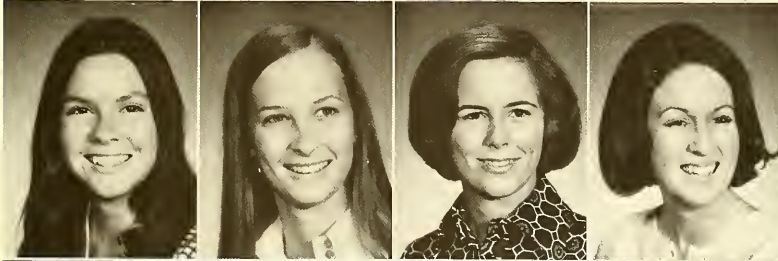




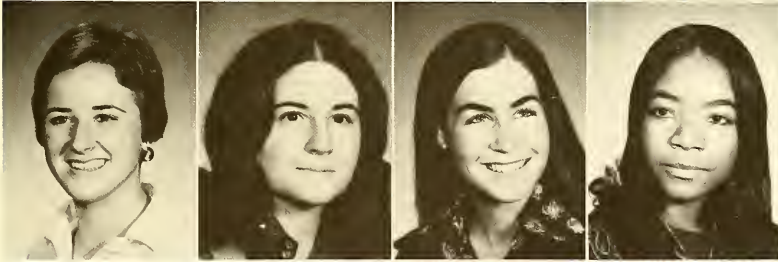
Katherine Akin
Rachel Alexander
Lucta Allen
Carol Asbell



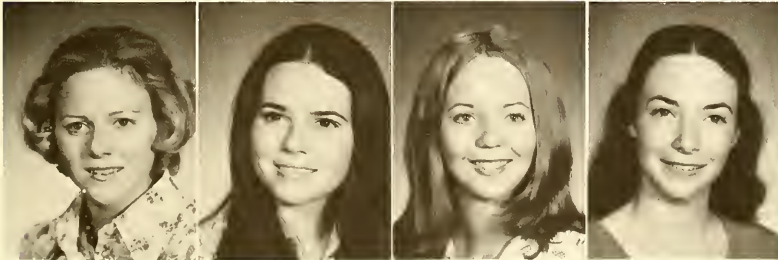
Patty Avery
Susan Balch
Lisa Banks
Cherry Joy Beyselance



Kitty Bireley
Carolyn Bitter
Gay Blackburn
Beth Boney

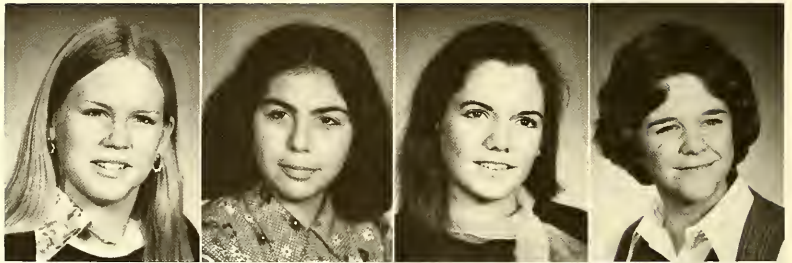


Brandon Brame
Jane Brawley
Jan Brisondine
Delphine Brown

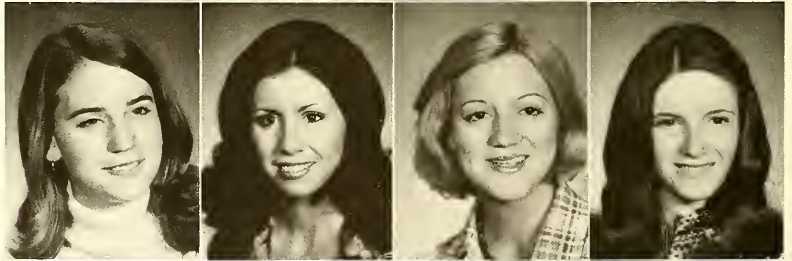


Lucy Burch
Margaret Carter
Diana Casten
Anne Clark

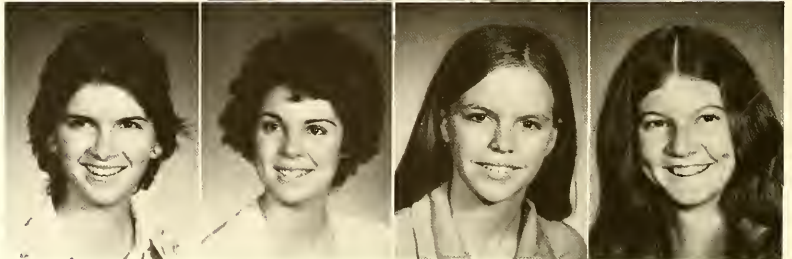
Karen Close
Alexandra Coclin
Muffin Crim
Alice Cromer



Polly Crook
Beth Davis
Lee Davis
Phyllis DeVane



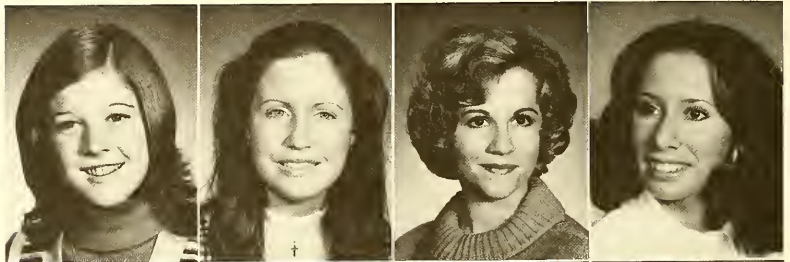
Beth DeWall
Lee Dillard
Eldridge Downey
Emily Dunbar



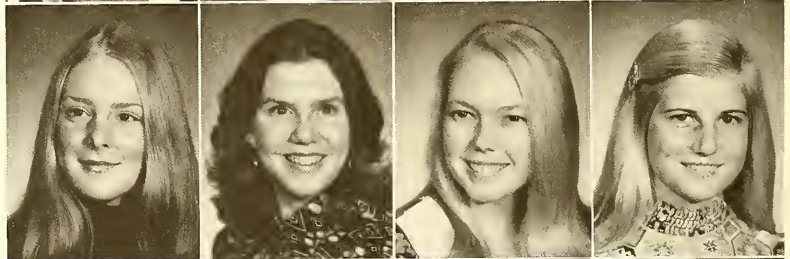




Cathy DuPree
 Marianna Edwards
 Kimberly Erickson
 Stacie Fazioza



Denise Floyd
 Cile Fowler
 Lynn Freeman
 Roslyn Fretwell



Ann Galloway
 Eva Gantt
 Josie Gartrell
 Alice Gentry





Harriett Graves



Susan Grier
Lee Ann Grimes
Pam Hamilton



Bungli Harris
Buff Hatcher
Marty Hench



Hope Hood
Liz Hornsby
Martha Howell



Debbie Huband
Sherry Huebsch
Marjorie Hunter

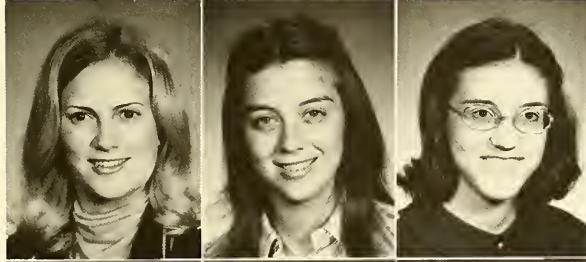




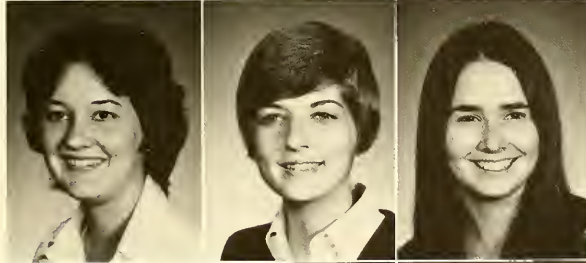
Becca James
Gemma Jernigan
Becky Jewell



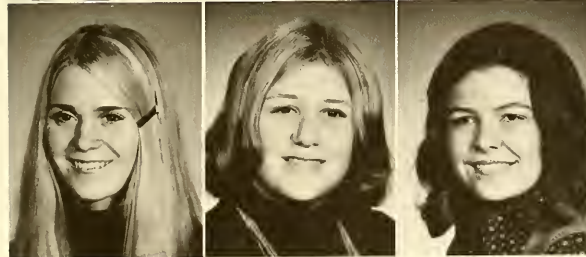
Jeanne Jones
Julie Jordan
Bettyann Kelahan



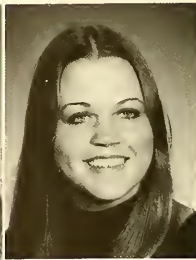
Frazer Kinnett
Cheryl Kitchens
Nancy Leasendale



Henny Leland
Diana Lipscomb
Alice Little



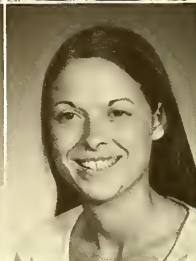
Karen Lockard
Jane Maas
Jan MacDonald



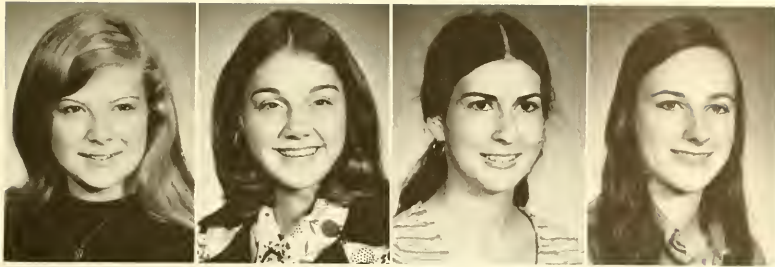
Ginny Maguire
Beth McBride
Debbie McBride



Becky McCulloh
Betsy McDaniel
Julia McRae



Beth Meaney
Jody Melton
Chris Metz



Peggie Miller
Melissa Mills
Nancy Mitchell
Susan Mitchell

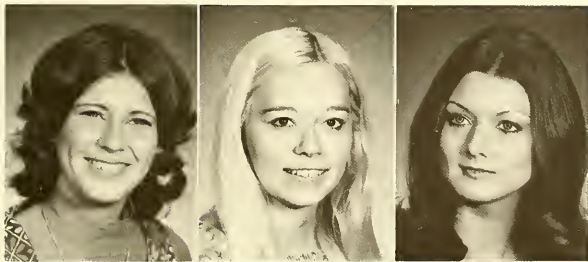


Genevieve New
Janet Norton
Candice Oslund



Ann Patton
Patty Pearson
Bonnie Pedersen

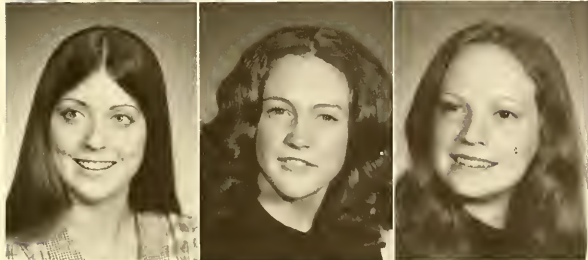




Mary Price
Jennifer Rich
Lori Riley



Lisa Roberts
Louise Roche
Emily Rumph



Judy Sapp
Martha Sarbaugh
Lynn Schellack



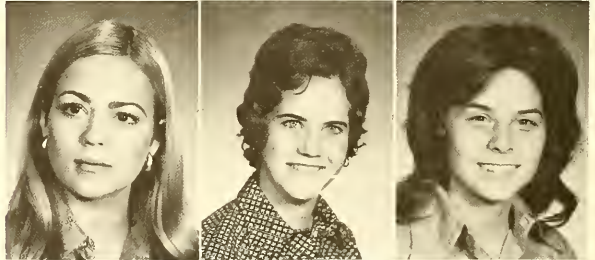
Beth Scott



Linda Scribner
Jean Sheffield
Louise Sheridan



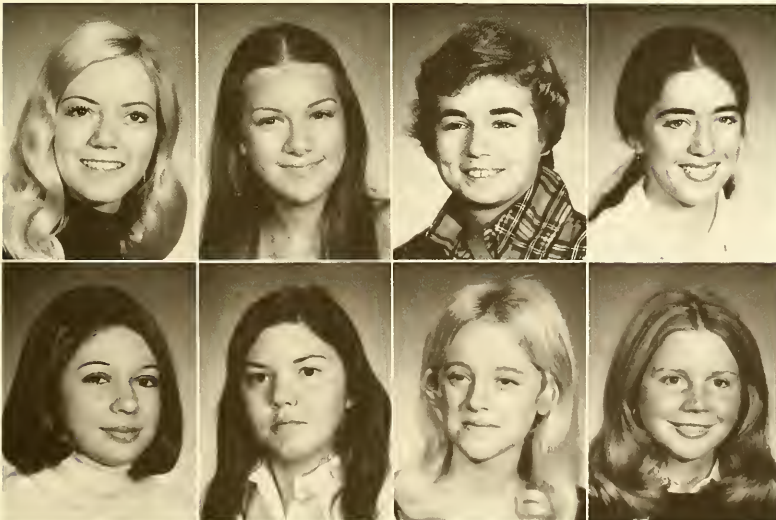
Shari Shufelt
Jacqueline Smith
Martha Smith



Alicia Snyder
Pedrick Stall
Janie Sutton



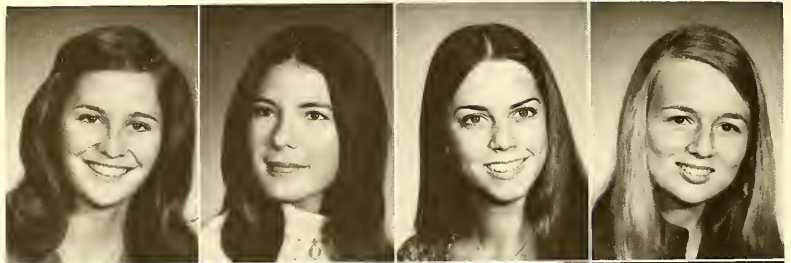
Polky Tarwater
Barbie Thrash
Anne Darby Tison



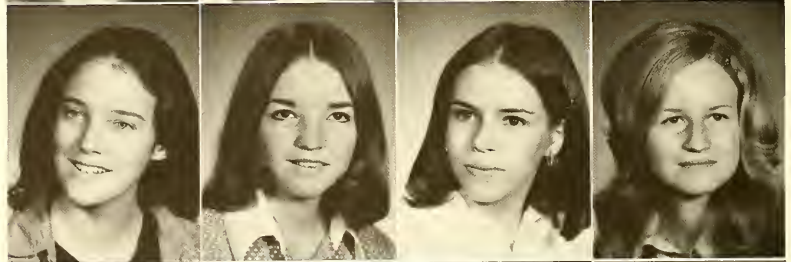
Lark Todd
 Ann Turner
 Lucy Turner
 Laura Underwood

Candis Veale
 Anne Walker
 Win Anne Wannamaker
 Martha Watson

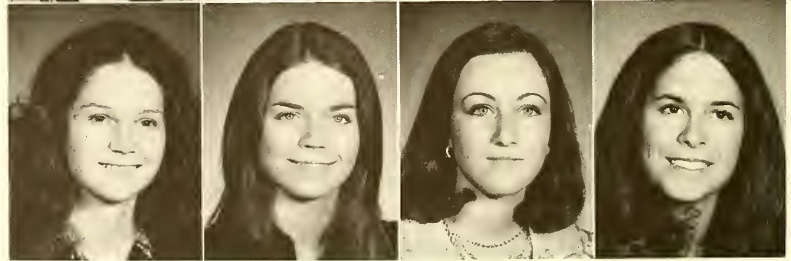
Kay Webb
Denise Westbrook
Nita Whetstone
Karen White



Dorothy Wilkes
Angele Willcox
Barbara Williams
Beverly Williams



Jean Williams
Jill Worthey
Barbara Wyche
Sarah Wynn





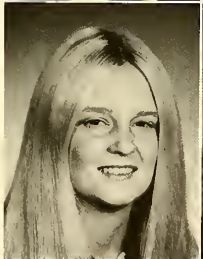
Juniors —

having too many books for the bookcase . . . having TV sets, stereos, hot pots and cook books . . . getting tipsy drunk often but really drunk only twice a quarter . . . not going to class meetings . . . feeling maternal toward freshmen . . . getting gray hairs . . . going out to eat a lot — at night with girls . . . tiring of the fraternity scene . . . being in charge of Black Cat and Junior Jaunt . . . wondering if the other classes do anything . . . feeling busy and important . . . collecting memorabilia . . . having appointment calendars . . . scheduling classes for midmorning . . . drinking too much coffee . . . thinking about the FUTURE . . . watching Seniors and wondering "Will we be like that next year?" . . . not hearing the hall phones . . . beginning to use the library again . . . trying to choose a topic for an independent . . . giving advice about professors to underclassmen . . . sitting in the dining hall for an hour after lunch and supper . . . ceasing to feel inferior to professors . . . spending vacations visiting friends and travelling . . . worrying about the future of the College . . . worrying about spring elections . . . hoping summer will hurry up and arrive . . . becoming Tab addicts . . . becoming movers and shakers instead of the moved and the shaken . . . hoping to be nominated for office and deciding to petition . . . wondering which dorm to live in next year . . . tutoring at Beacon Hill Elementary . . . almost . . .





Eva Adan
Janey Andrews
Carmen Banks
Tomlyn Barns



Vicki Baynes
Nan Berry
Mary Anne Bleker
Connie Bowen



Marianne Brinker
Suzi Brinkley
Mary Louise Brown
Melodye Brown

Victoria Burgess



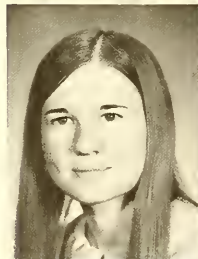
Martha Carr



Anna Case



Lou Anne Cassels
Shelby Cave
Lily Chan
Debbie Clark



Rose Ann Cleveland
Vicki Cook
Stacy Corbitt
Terry Davis





Louise Dawsey



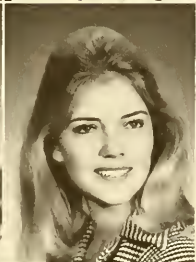
Linda Duke



Pam Edwards



Gina Etheridge
Ann Fincher
Allyn Fine
Sharon Forney



Sandy Fraser
Susan Gamble
Charlotte Gillis
Robbie Goodall



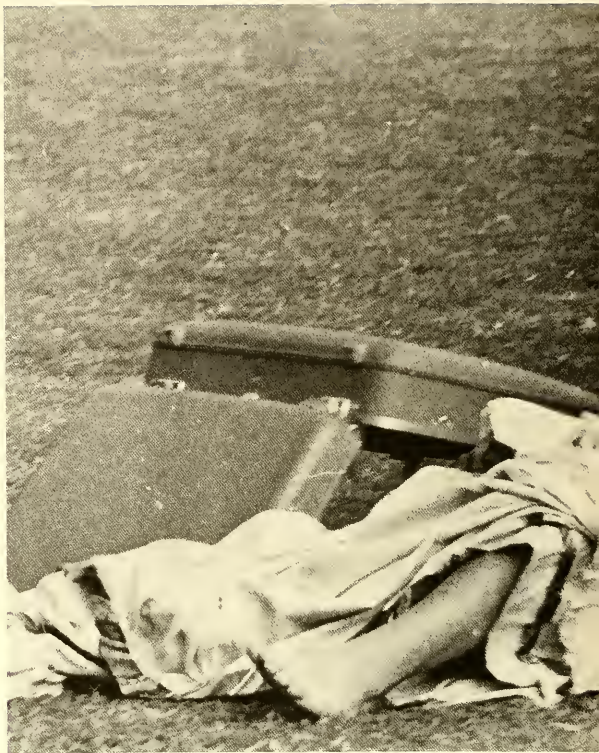
Allison Grigsby



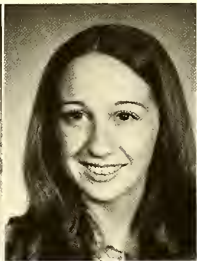
Kay Griner



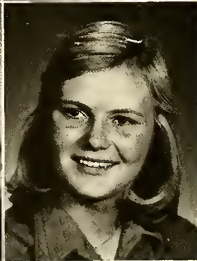
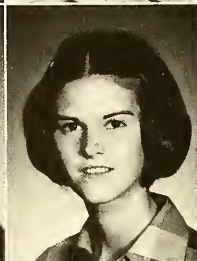
Karen Hale



Debbie Harris
Sarah Harrison
Gee Hay
Lisa Heatly



Patsy Hilton
Glenn Hodge
Denise Hord
Karin Horstmann





Howell Hampton



Lynne Jameson



Shelli Jenkins



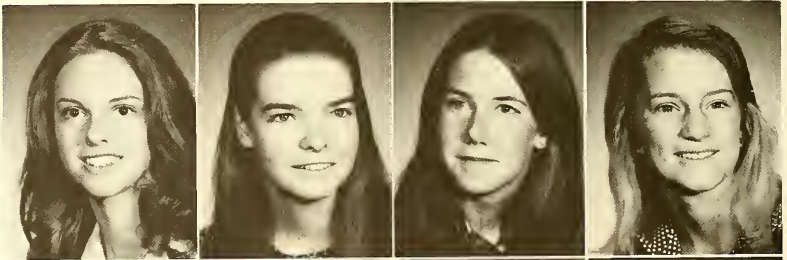
Jill Johnson
Mary Jones
Nell Jordan
Susan Landham



Mae Logan
Ruth McAliley
Lynda McCray
Beth McCadden



Joyce McKee
 Carolyn McKinney
 Ruthie McManus
 Della McMillan



Donna McWhorter
 Fran Maguire
 Becky Meador
 Mary Gay Morgan



Hatsy Newton
 Marie Newton
 Nancy Oliver
 Virginia Parker





Mary Pender
Jayne Peterman



Ellen Phillips
Cathy Pirkle



Catherine Pugh
Karen Rahenkamp



Melinda Rapp
Debbie Reddic

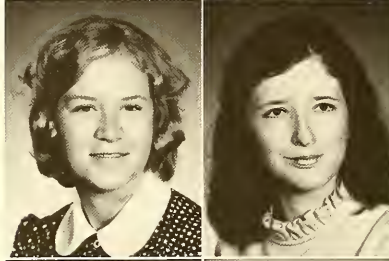


Irmina Rivero
Christi Roberts

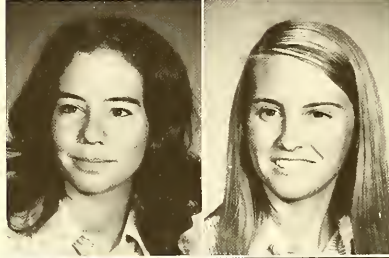
Vicki Roberts
Margaret Robison



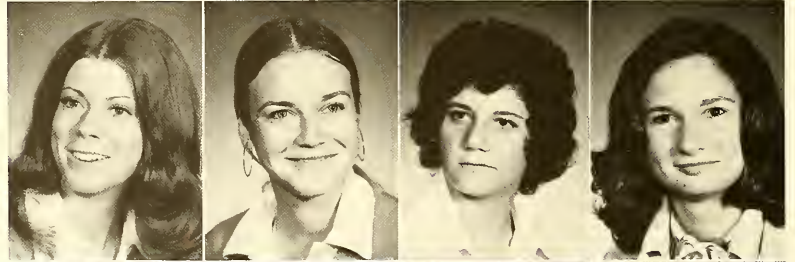
Angie Rushing
Margaret Samford



Lyn Satterthwaite
Sandy Sheridan



Mary Frances Shine
Melissa Shuster
Susan Stigall
Susannah Stevens



Melissa Stretch
Shelley Tapp
Kay Teien
Becky Thompson

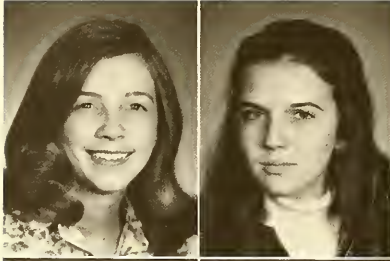




Judy Thompson
June Thompson
Marsha Thrift
Karren Tilley

Carol Townsend
Sally Turner
Betsy Wall
Becky Weaver

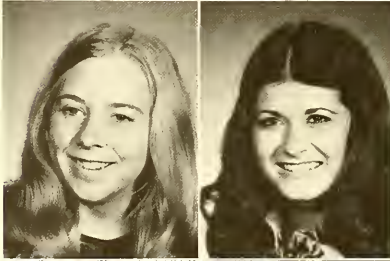
Knight Webb
Lynda Weizenecker



Frances Weston
Nancy White



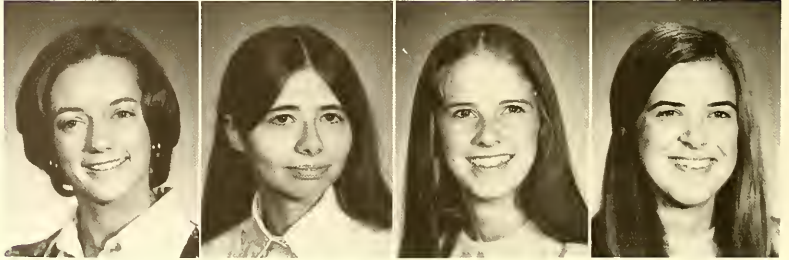
Beth Wickenberg
Deidre Wilkes



Joanne Williams
Laurie Williams



Margaret Williams
Becky Wilson
Linda Woodward
Whit Worman





Above — Debbie Hamby, Ann Loden, Semerlyn Paris, Irmina Rivero; Below — Debi Belt.



Seniors —

Investiture . . . "We are tired old Seniors" . . . independents . . . having one's own carrel in the library with a light that doesn't work . . . knowing no underclassmen . . . being interviewed for jobs . . . not getting any mail . . . becoming engaged and being thrown in the Alumnae Pond . . . GRE's . . . graduate school . . . scheduling 13 hours for spring quarter . . . saying, "It goes by so quickly" . . . planning weddings . . . pass-fail courses . . . poring over catalogues . . . living in singles . . . having ASC rings with letters that don't interlock . . . waiting for letters of acceptance . . . saying, "If I had it to do over again, I'd —" . . . becoming maudlin and nostalgic when we sing "God of the Marching Centuries" . . . saying Black Cat is silly . . . being president or chairman or something . . . being either in early or out all night . . . student teaching . . . job hunting . . . being flabby — too much drink and no more P.E. . . . getting hair cuts . . . never having phone co-op or hostess duty . . . really looking at china surveys . . . drycleaning . . . counting the days until graduation . . . having a boyfriend who's left Atlanta . . . internships . . . going to see Miss Gary about the FUTURE . . . getting the GREAT DEPRESSION, or what-will-I-do-with-the-rest-of-my-life panic . . . having huge plants because they've grown since freshman year . . . saying, "This is my last —" . . . majoring in extra-class education . . . graduating from Agnes Scott.





Above — Mrs. Mary Starling Inman, Art; Left — Jennifer Joy Fisher, Psychology.





This Page: Above — Melisha Miles, Psychology; Below — Jeanette Walls Fredrickson, History; Opposite Page: Above — Mrs. Carolyn Sisk Deadwyler, Political Science; Below — Lucile Saxon Palmer, Sociology.



Wendy Hellings, French.





Left — Barbara Diane Beeler,
Music; Below — Kate Elizabeth
McGregor, Sociology.





Above — Mrs. Martha Stephenson Kelley, Spanish; Right — Martha Elizabeth Howard, Dramatic Arts.





Mrs. Deanna Penland Ramsey, Music.



Right — Victoria Margaret Kirby,
Psychology; Below — Elizabeth Stratton
Lee, Dramatic Arts and Philosophy.





Above — Leila Wheatley Kinney, Art and English; Right
— Gloria Maxine Wyatt, Mathematics.



This page: Judy Carol Duncan, Mathematics; Opposite Page: Mrs. Elizabeth Holmes Smith, Biology.







Above — Candace Elizabeth Woolfe, History;
Below — Mamie Ruth Grisham, English.



Left — Patricia Ann Cook,
Mathematics; Below —
Elizabeth Myhand Abbott,
Psychology.







This Page: Left — Melanie Ethel Moore, Biology; Left Below — Ann Hunter McMillan, English; Right Below — Ann Elizabeth Patterson, English; Opposite Page: Cynthia Goldthwaite, English.





This Page: Judith Ann Greene, French; Opposite Page; Above — Nelly Jitsuya, Psychology; Below — Elinor Merritt Perkins, Music.





Above — Angela Dunn, Psychology; Right Above — Marianne Bradley, Psychology; Right Below — Mary Jane Kerr, History.





Left — Jamie Carroll Osgood, Dramatic Arts;
Below — Betty Lynn Binkley, Mathematics.



This Page: Below — Lyn Sanders Stogsdill, Mathematics;
Right — Deborah Sue Walker, History; Opposite Page:
Patricia Louise Hughes, Classics.









This Page: Karen Elizabeth Dick, Psychology. Opposite Page: Above Left — Janet Leigh Sarbaugh, History; Above Right — Wendy Michele Wheelchel, Economics; Below Left — Deborah Sue Welch, History; Below Right — Mary Jane Warren, Art.



Right — Pamela Coffey, Psychology;
Below — Mrs. Ann Early Bibb, Chemistry.





Far Left Above — Claire Owen, Economics and Mathematics; Far Right Above — Mary Frances Lawless, Psychology; Above — Mrs. Julie Lipscomb MacLemore, French.





This Page: Above — Brenda Sue Stills, Philosophy; Below — Lucile Eve Brockman, English. Opposite Page: Above — Ethel Celeste Cox, History; Below — Ivey Beth Budd, Economics.

This Page: Right — Mary Susan Walker, English; Below — Anita Kathryn Kern, Physics. Opposite Page: Above — Eleanor Lynn Williams, Spanish; Left Below — Ann Allen Young, Psychology; Right Below — Camilla Brannen, Classics.







Right — Abigail Hunter Burr, History; Below Right — Davara Jane Dye, French; Below — Lucy Norton Moss, Spanish.





Left — Mary Lynn Gay,
Economics; Below — Kay Lillian
Colvin, Art.





This Page: Calie Lucile Jones, English and Sociology. Opposite Page:
Above — Mrs. Susan Higgins Norton, Biology; Middle — Amy Louise
Ledebuhr, Political Science; Below — Nancy Strother Dodd, English.





Above — Ann Maureen
Christensen, Biology;
Right — Linda Diane
Parsons, Political Sci-
ence.



Above — Mary Margaret MacLauchlin, Psychology;
Below — Elizabeth Evert Bean, History and
Mathematics.



Below Left — Ellen Jean Redd, Bible and Religion; Below Right — Mrs. Eleanor White Deierlein, English and American Art/American Literature.





Left — Martha Ruth Rutledge, Sociology;
Below — Cecilia Anne Henry, Biology.



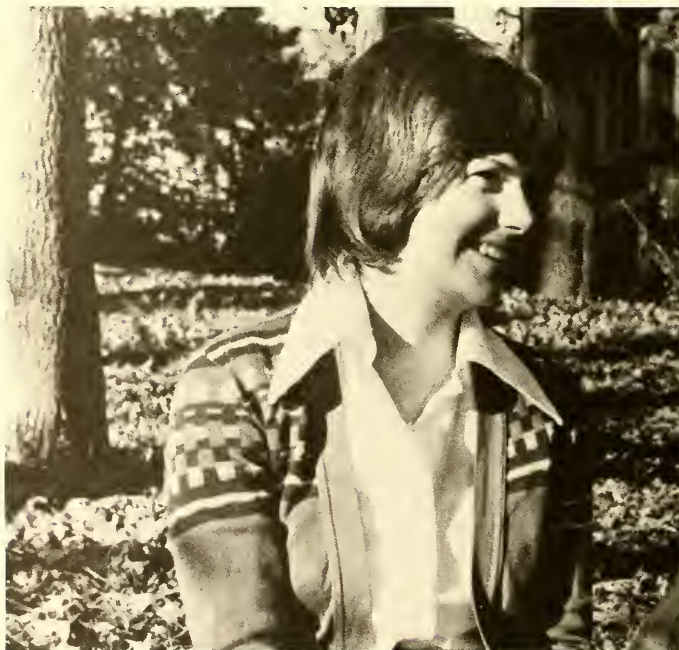
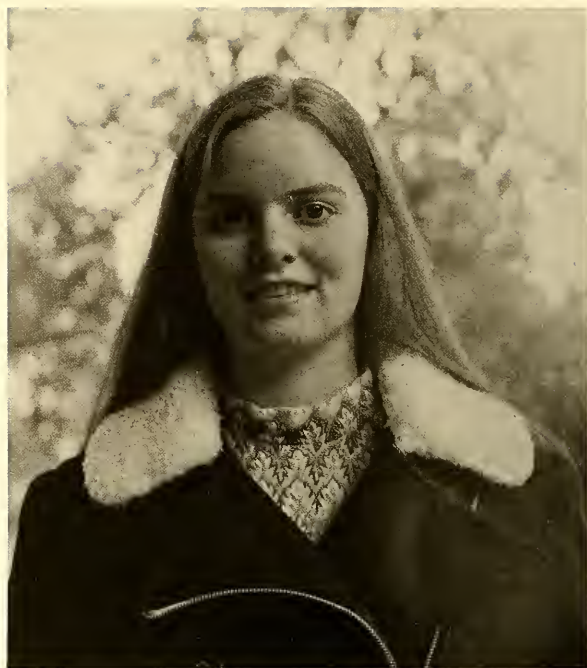




This Page: Left — Jo Ann Hensley, Psychology; Below — Patricia Ruth McGuire, Biology. Opposite Page: Above — Anne Frances Fulton, German; Middle — Ann Cordes Harvey, Art; Below — Lynn Elizabeth Ezell, Biology.



This Page: Right — Dorothy Ann LaMon, French; Below — Gayle Shute Rankin, Economics. Opposite Page: Above — Rebecca Ann King, English and Art; Below — Teresa Louise Lee, Economics and Sociology.







Right — Sara Elizabeth Barrett, Economics;
Below — Mrs. Diane Roemer Atchley, English.





Above Left — Teresa Stephens Dew, History; Above Right — Linda Lou Hill, Mathematics; Left — Mary Kerr Praytor, Art; Right — Jane Marshall Simons, Art.



This Page: Ann Marie Poe, English and Psychology. Opposite Page: Above
— Paullin Holloway Ponder, Psychology; Below — Karen Anne Lortscher,
Dramatic Arts.





Right — Tania Gumusgerdan, Psychology; Below — Mrs. Marta Powell Harley, English.





Above — Laura Lynn Johnson, History; Left — Susan Page Skinner, Psychology.



This Page: Above — Elizabeth Smith, History; Below — Susan Ray Blackwood, Art. Opposite Page: Above — Mrs. Kay Parkerson O'Briant, History; Below Left — Elizabeth Blue Argo, Art and English; Below Right — Sally Martin Harris, English.







This Page: Right — Julie Louise Bennett, Biology; Below — Vivienne Ryan Drakes, Psychology.
Opposite Page: Above — Leonita Yates Worth, Biology; Below — Anne Blake Gwynn, Art.







Above — Mary Katherine Ryan, English; Below — Mercedes Elaine Vasilos, History.



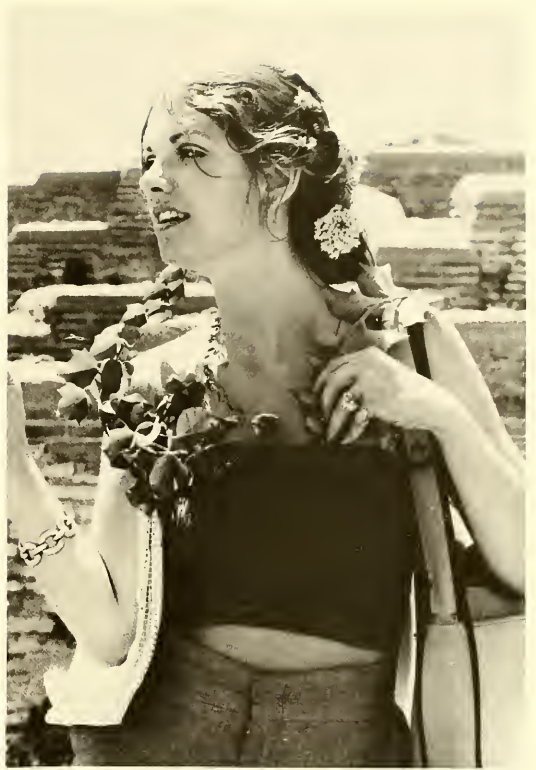


Left — Molly Hand, Biology; Below — Mrs. Christine Clark Wilson, English.

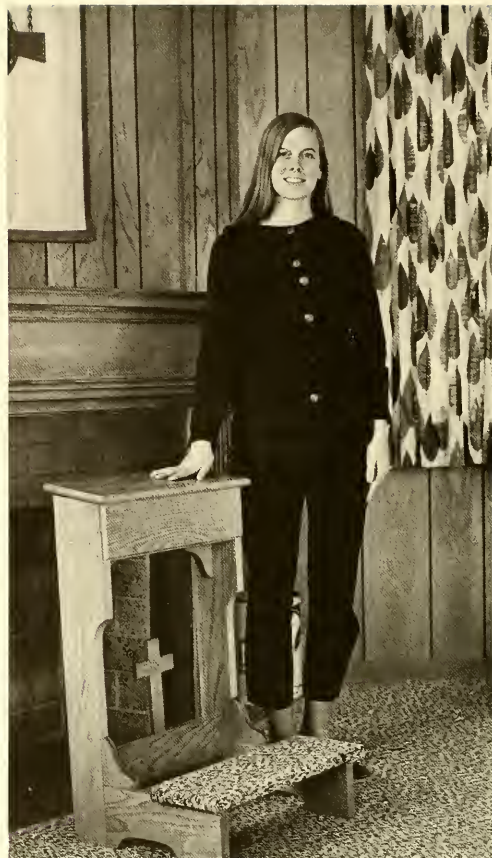


Left — Deborah Michelle Garfield, English; Below —
Katrinka Jane Allen, Mathematics.



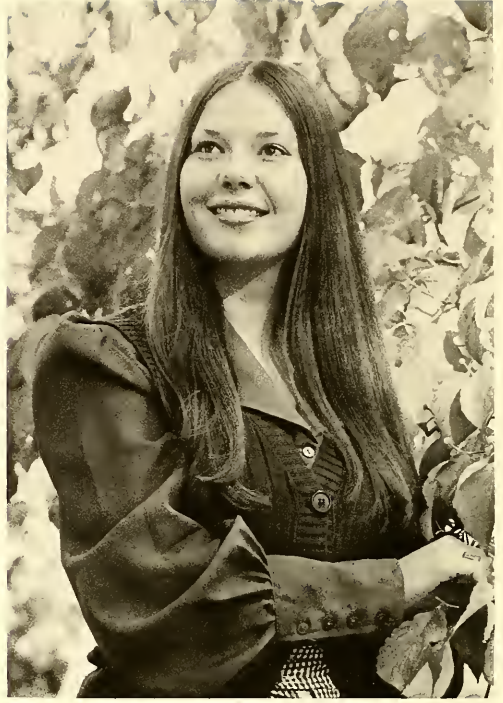


Right — Frances Elizabeth Middleton, Art; Left — Mrs. Sharon Padgett Schillinger, Mathematics.



This Page: Left — Rebecca Ann Zittrauer, English; Right — Angelyn Ann McGuff, English and History. Opposite Page: Above — Jennifer Lee Shelton, Bible and Religion; Below — Mary Anne Shirley, History and Sociology.





This Page: Left — Eleni Olga Papador, English; Right — Mary Louise Wade, Bible and Religion and English. Opposite Page: Above — Louise Baker Huff, Political Science; Below — Stephanie Ann Caswell, Dramatic Arts.





Ads/Index/Closing





Roman Summer

22 bella ragazze . . . Rome, Florence, Naples
 . . . from one convent to another . . . Monte
 Verde . . . Forum Romanum, Boarium e Im-
 periale . . . Villa Giulia and Greek vases . . .
 "the Etruscan pose" . . . sarcophagi . . .
 Praxiteles, Hadrian and Zenn . . . The Panth-
 eon . . . St. Peter's . . . Vittorio Emmanuele,
 the Uffizi and Borghese . . . Michelangelo,
 Raphael and Pepe . . . "50 lire, please" . . .
 "Aida" at Caracalla . . . bus #75 . . .
 "strictly B.C." . . . Papa Pepe . . . churches
 . . . divino devino . . . "andiamo" . . . Ber-
 nini and Kernini . . . spaghetti a la . . .
 Burt Lancaster at Sabatini's . . . coins in
 Trevi . . . S.P.Q.R. . . . Ciao Bella.



SuperX Drug
523 Church St.
Decatur, Ga.

Shields
141 Sycamore St.
Decatur, Ga.



The Sherwin Williams Co.
217 Trinity Place
Decatur, Ga.

The Square Table Restaurant
129 E. Ponce de Leon Ave.
Decatur, Ga.



International Management
Internationale Betriebswirtschaft
Frank C. Wilson
P.O. Box 1515
Gainesville, Ga. 30501

Smith's Shoes
Decatur, Ga.

Herff Jones Co.
5105 Peachtree Ind. Blvd.
Atlanta, Ga.





The Good Life
#1 W. Court Square
Decatur, Ga.

Fat Albert's Sandwich Shop
127 E. Court Square
Decatur, Ga.







Hearn Jewelry Co., Inc.
131 Sycamore St.
Decatur, Ga.

Watson's
309 E. College Ave.
Decatur, Ga.

Sharian, Inc.
368 W. Ponce de Leon Ave.
Decatur, Ga.

forming a multitude —
but a multitude of one
growing inward and outward,
sharing vistas of mankind,
exploring nooks and crannies
in the self . . .





probing so many depths,
sending out roots that will stretch
 yet never snap,
defining oneself more clearly,
but erasing the boundaries
 of one's existence . . .



gaining:

direction —

directions —

insight —

outsight —

a greater perspective . . .





things that don't stop here,

that can't stop here . . .

and a soul

never satisfied,

yet thriving on its hunger

an infinite debt:

a way of life,

and a way to life.



"I am a part of all that I have met;
Yet all experience is an arch wherethro'
Gleams that untravell'd world whose margin
fades
for ever and for ever when I move."
— Tennyson, "Ulysses"

