

THE

1961

SILHOUETTE

Agnes
Scott
College



Mere Kaker





THE 1961 SILHOUETTE

AGNES SCOTT COLLEGE
DECATUR, GEORGIA

Kathryn Page Smith—Editor

Margaret Bullock—Managing Editor

Betty Sue Wyatt—Business Manager

Moments

in

Silhouette...



Shape striking sight . . . simplicity
. . . contrast . . . suggestion . . .
quiet potentialities . . . acquiring
essence through onlooker . . . forms
. . . concealing life . . . opening of
doors . . . profiles . . . moving into
view . . . gazing upward . . . tree
tops slashing clear skies . . . dark-
ness in daylight . . . lights through
the night . . . evocation of memories
. . . moments in silhouette.



Table of

Introduction

Features

Academics

Classes

Pages 1-17

Pages 18-53

Pages 54-89

Pages 90-143

Theme introduction . . .
Dedication . . . Portfolio . . .

A silhouette . . . Fall events
. . . Lecturers . . . Winter
events . . . Beauties . . .
Spring events . . .

A silhouette . . . Adminis-
tration . . . Staff . . . Faculty
departments . . . Recognition
of faculty endeavor . . .

A silhouette . . . Seniors . . .
Juniors . . . Sophomores
. . . Freshmen . . . Special
students . . .



Contents

Organizations

Sports

Advertising

Conclusion

Pages 144-173

Pages 174-195

Pages 196-219

Pages 220-224

A silhouette . . . Boards . . .
Publications . . . Clubs . . .
Honoraries . . .

A silhouette . . . Spirit . . .
Fall sports . . . Winter sports
. . . Spring sports . . .

Advertisements . . . Com-
plete index of contents, stu-
dents, faculty, advertisers . . .
Photo credits . . .

Editor's last word . . . Staff
of 1961 *Silhouette* . . .



He answers student questions on any subject from summer study abroad to existentialism.



1961 Silhouette Honors Dr. Kline



THE LAUGH IS UNMISTAKABLY DEAN KLINE'S.

Good news, gripes, oaktreeness—all come under the heading of Dean Kline. Our Dean of the Faculty is a welcome sight to students whether they are changing courses, bubbling with enthusiasm after having received scholarships, or discussing philosophical problems. Dr. Kline, almost a synonym for good faculty-student relations, and his gracious wife often entertain students in their home. The 1961 *Silhouette* staff takes real pleasure in dedicating this annual to Dr. C. Benton Kline.

MR. KLINE THOUGHTFULLY CONSIDERS A QUESTION.







SILHOUETTES

*Nassau palm . . . mem-
ory of spring vacation
. . . cards, coke, ciga-
rette . . . Hub hour . . .
skyliner . . . classes . . .
pine needles and clouds
. . . afternoon walks . . .
hastily ironed blouse . . .
anticipation of fun . . .
simple silhouettes . . .
special to someone.*





WEATHER

*Alternation . . . the white
of frost and dogwood . . .
sun and rain . . . a morn-
ing breeze . . . stars
through a night's clouds
. . . a rare and icy storm
. . . winter's deluge
brightened by umbrellas
. . . pale green to prom-
ise spring.*







FACES



*Dr. and Mrs. Alston . . .
warm eminence
Steimle spiritual
strength dramatic
students . . . jigsaw puzzles,
masked mobility . . .
Frost provocative
humility . . . campus productions
. . . . shared
snickers mirror of
many moods.*





PATTERNS

Perspective . . . new angles . . . fresh insight . . . abstract beauty . . . waiting for the viewer . . . varied campus styles . . . white columns . . . salient buttresses . . . cement, iron, glass, and leafy shadows . . . inscape of a landscape.





ATLANTA

Aching feet . . . glittering lights . . . the savory taste of a Hickory Steer . . . sound of blaring music . . . a room full of people . . . classes at Emory . . . towering glass and steel buildings . . . Atlanta . . . our larger campus.









FEATURES

Sunrise . . . dawn of a year . . . Orientation . . . days of uncertainty . . . waiting in lines . . . fall . . . dances . . . skits . . . The Skin of Our Teeth . . . Christmas . . . parties and singing . . . meditation . . . winter . . . beauties interviewed . . . broadening horizons . . . contributions to charity . . . visit from sophomore parents . . . informal evening with Robert Frost . . . Religious Emphasis Week . . . questions . . . answered, lingering . . . spring . . . Fine Arts Festival . . . drama . . . music . . . dance . . . art . . . literature . . . creation . . . appreciation . . . climax, culmination of a year's planning . . . graduation . . . sunset . . . sunrise . . .

Mood—in motion



Universal



Four o'clock



A Silhouette of Features



Spray-writing



Take one room; add ten assorted sponsors, helpers, parents, and freshmen; mix well.

Orientation Acquires New Emphasis



GATRA LAMPLEY HAS HER HANDS FULL.

No sooner are shoes, hat boxes, and dresses dumped in a room and parents given a hasty good-bye kiss, than the new freshman Scottie is whisked away by her Junior Sponsor to begin hectic, but fun filled days. There were on-campus and fraternity parties to attend, classes to be scheduled, and the Handbook to be learned. Reading *The Lonely Crowd* and *The Stranger* was another item to sandwich in before the hall discussions that were part of the new *Academic Orientation*.

RAIN INTRODUCES MARGARET WHITTON TO TRUE CAMPUS LIFE.





WHAT COMES AFTER ENDLESS REGISTRATION? MORE LINES.

JOAN REVIEWS FOR HALL DISCUSSIONS.



MAE HALL FINDS THAT TECH BOYS DANCE WELL.

TEAS JOIN REFRESHMENTS AND NEW FRIENDS.





CORNELIUS ANNOUNCES SWEEPSTAKES WINNERS.



VALENTINE DISLIKES PA'S POLITIKING.



FRESHMAN "CHORUS GALS" SHOW BLACK CAT SPIRIT.



CHEERLEADER CALLAWAY SPARKS SOPH PEP.



SENIOR SKIT IS APPRECIATED BY SPIRITED JUNIORS WHO CATCH QUOTATIONS FROM SOPHOMORE ENGLISH.

Black Cat Day Gives Juniors Victory

Each senior Eloise with yellow mortar board, juniors and Yogi Bear, "What?—Me Worry?" sophomores, and freshmen with Harvey (they see him) marched to the Aglympic Games. Black Cat Day had begun! Juniors won doubly in the Sweepstakes and song contest. During the original production *Cats in Cardland*, freshmen proved themselves to be Jacks of All Trades, and seniors advised playing your cards right for political success. Then, before the dance, the black cat changed hands.



CAT MEOWS, "GOOD-BY SOPHS: HELLO FROSH."



FATS JACKSON'S COMBO KEEPS DANCING LIVELY.



Fortuneteller informs skeptical conveeners, "Dead before 30!"

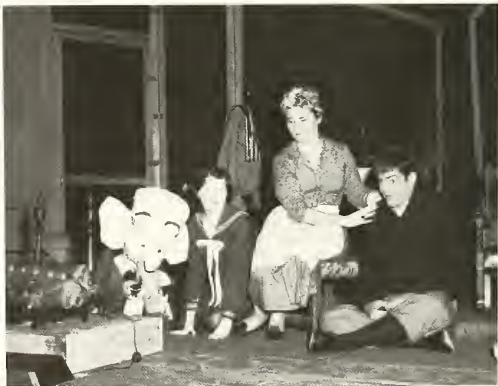
Tech Joins Scott in "Skin of Our Teeth"

SABINA LURES EAGER MR. ANTROBUS TO CABANA.



Revelation for both Blackfriars and DramaTech members came in their joint production of "The Skin of Our Teeth." Scotties learned how to be stage electrician apprentices, and how to build a set like an engineer! DramaTech was shown the organized way to produce a play. Actresses had the opportunity to work under Mrs. Santa-Croche as director, while actors enjoyed working with a large cast of college girls. The performance at Scott drew a full house appreciative of the unusual comedy.

"IS IT GOING TO BE COLD LIKE THIS ALWAYS MAMA?"





"EATING A DONUT—THAT MUST BE 200 CALORIES!"



CAMERA CATCHES MRS. CURRY, TANGO PARTNER.

Stage, Hub, Gym Set Fall Frolics Mood

By "The Skin of Our Teeth" we began the frantic pace of Fall Frolics weekend. The Hub really deserved its nickname on Saturday afternoon as clapping hands, bobbing heads, and scattering cards disturbed the smoky air to the time of Ray Stevens' combo. Evening struck a sedate note as Albert Coleman and his orchestra provided the music for dancing among the lovely Mardi Gras decorations in the Gym. Coffee and donuts in Walters basement concluded these two days of frolicking.

THE RIBBON CEILING OF FALL FROLICS DANCE CREATES AN UNUSUAL ABSTRACT DESIGN.





Chaucerian philosophy today—
"With ful devout corage . . ."

Little Girls Grow Up For Investiture Day

Squeals, cap pistols, and roller skates were the sounds which awakened the campus on Little Girls' Day. Teddy bears and bows were all the rage for the seniors. Favorite games like the Farmer in the Dell were played in Chaucer. The next day was one of great solemnity; long robes replaced short dresses for the Investiture ceremony. Mrs. Pepperdene's speech highlighted a day of tradition for the Class of '61.



CAPPING BRINGS OFFICIAL GRANT OF SENIOR RANK.

HOW DIFFERENT FROM TOMORROW'S CAPS AND GOWNS!



Dancers convey Hungarian Christmas spirit as angel blesses sleepy children.



Programs, Party Renew Christmas Spirit

Even exams failed to dampen campus Christmas spirit. Contemporary Modern Dance Group ushered in the season by choreographing various Christmas legends, which dancers presented in a chapel program. The Glee Club concert proved enjoyable from both the listener's and participant's standpoint as audience joined with choir to sing familiar carols. Adjournment to the annual party in Walters brought informal singing around the piano. Dr. McNair as Santa promised all a "Merry Christmas."



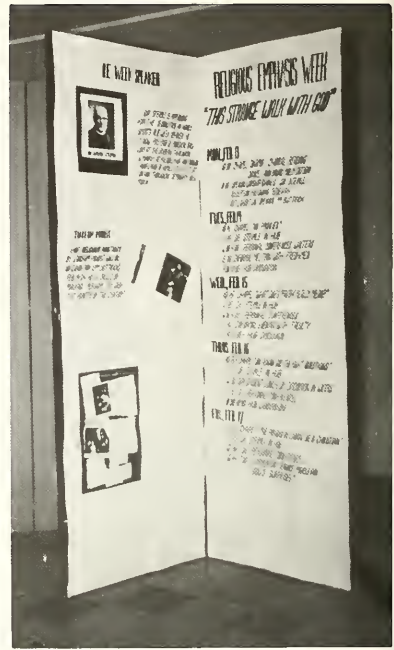
SANTA ("CECIL B.") WELCOMES KATE.



Peggy, Beth, Willie Byrd interpret in dance the flight of Mary, Joseph from Herod to Egypt.



A SMILE AND A PIPE—MARK OF STEIMLE.



R. E. WEEK REMINDER SHOWS LYNN'S ART.



Mr. Pelletier lectures to the skeptical Democrats and the agreeing Republicans.



Dr. Alston seems to enjoy Mr. Cooke's subtle British humor.

Students eagerly await their personally autographed copies of Frost's books ordered weeks in advance.



Lectures Bring Old and New Friends

Robert Frost's winter quarter visit, as traditional as the rain, meant a cherished evening of conversational wit and wisdom. Through the year University Center lecturers expounded on the arts and social sciences. During Religious Emphasis Week, Dr. Edmund Steimle presented "This Strange Walk with God." A week later, artist Probst discussed the exhibition of his religious paintings. The Arts Festival brought a critic and an author, Ciardi and O'Conner on campus.



DR. ROWSE GIVES INSIGHT ON ELIZABETHAN PERIOD.



Archaeologist and Biblical scholar, Albright lectures on "New Light on New Testament."



WEARY FRESHMEN AND THEIR BETAS TAKE A BREAK FROM THE CROWDED FLOOR.

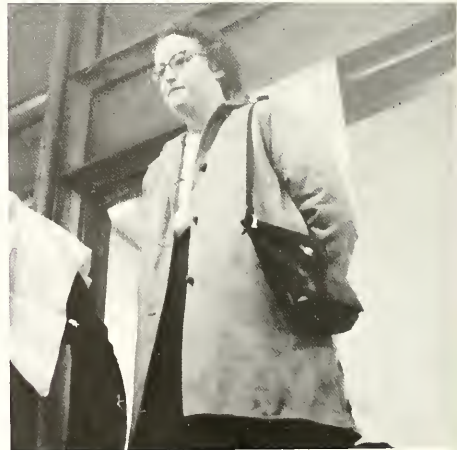
Fun of Junior Jaunt Helps Charities



SOME PEOPLE WILL DO ANYTHING FOR MONEY.

Gay posters and thriving businesses dot the campus during the week of Junior Jaunt activities as students raise money for charities. Projects consist of everything from shoe shines to beauty shops to a slave sale, where select faculty and students are slaves for a day to the highest bidder. The week of money raising and class competition is climaxed with a Charity Ball at the Dinkler Plaza. Purses are emptied, but hearts are filled as savings are willingly donated to worthy causes.

"I NEVER DREAMED, WHEN I DECIDED TO TEACH . . ."





Molly Dotson leads the juniors
in a song for the charity drive.



A DANCE GIVES A MOST DELIGHTFUL CLIMAX TO THE WEEK'S CAMPAIGN.

Liz, Margaret, and Marty grace the
doorway of the Dinkler Plaza Hotel.





VISITING PARENTS WONDER IF ROAST BEEF IS ALWAYS SERVED FOR LUNCH.

Class of '63 Joins to Honor Parents



WE SELDOM HONOR FATHERS IN PARTIES AT SCOTT.

A whole year's work found its culmination in the short Sophomore Parents Weekend. The entire campus joined the class of '63 in presenting this well-loved tradition. The academic side of life at Agnes Scott was viewed by parents in the classroom visitations and conferences with professors. The parents were rushed from chapel programs to a water ballet, on to an open house in Walters to meet the faculty, to the college luncheon, and then to an open house at Dr. Alston's.



Mrs. Duvall seems somewhat puzzled at Miss Leyburn's English lecture.

Tweedle Dum and Tweedle Dee caper for the Dolphin Club extravaganza.



A DECK OF CARDS BECOMES MOBILE AND AQUATIC FOR THEIR PERFORMANCE IN "ALICE IN WONDERLAND."



Betty Hutcheson Reigns As Top Beauty



Agnes Scott Beauty Betty Hutcheson, a sophomore, is from Arlington, Texas. Her interests run from dancing to biology, with a love for sewing lying in between. Her favorite sport is tennis. After graduating from Agnes Scott Betty hopes to teach school. She was a member of the steering committee for Sophomore Parents Weekend and is a member of the *Silhouette* staff. Betty's warm smile and friendly manner make her a real campus favorite.







Kaye Stapleton

Honor Beauty



Ana Maria Aviles



Judy Holloway



Mary Ellen Barnes



*Ellen
Middlebrooks*



Polly Richardson



Pam Stanley



Sally, Mary Ellen, Pat, Ana Maria, and Beverly chat before interviews.

Three Viewpoints Choose Beauties

Both expert opinion and the Agnes Scott student body helped to select this year's beauties. Four candidates from each class were individually interviewed on January 28, by Mrs. Eb Daniel, an alumna and Atlanta model, Mr. Bertrand Drucker, professor at Georgia Tech, and Mr. Allen Goodleman, an Atlanta photographer. The interviewing method introduced this year helped judges to accurately evaluate each contestant on beauty, poise, and personality.



SENIOR MILLIE MCCRAVEY TALKS WITH THE JUDGES.

FIVE CANDIDATES FIND A MINUTE OF RELAXATION.



BETTY GIVES FRESHMEN SOME TIPS ON POISE.





Sewell, Gassner, Ballew, and Porterfield view student drama.



STUDENTS PRESENT MOLLY'S REFUTATION.



PAT HALE MAKES LAST MINUTE CHANGES IN SCRIPT.

During masquerade party, Sugar Ray, Uncle Sam plot to reach America.

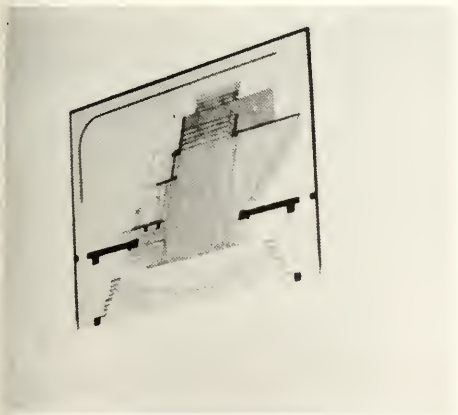


Uncle Sam's Cabin in Lebanon rocks 'n rolls.



Students, Experts Explore Dramaturgy

"Crisis in the American Theatre," a lecture by drama critic John Gassner, initiated the Fine Arts Festival. That evening Blackfriars gave the premiere performance of *Uncle Sam's Cabin*, a comedy by ASC graduate Pat Hale. Present for the gala opening night were Mr. Gassner, Mr. Porterfield, and Mr. Ballew. With Mrs. Sewell they viewed two student one-act plays the next day and held a critique of the dramas. A showing of Lauterer's set designs added interest to the overall program.



ARCH LAUTERER'S SET DESIGNS LINE PRESSER.



BETTY SUE, KIM PLAY AMERICANS IN NEAR EAST.

Betty, Miss Ripy record bids, keep work already sold 'til auction's end.



FESTIVAL ADOPTS A UNIFYING SYMBOL.

Styles, Media Vary In Art Exhibition

Woodcuts, oils, drawings, sculpture and pottery filled the exhibition where students met both art and artists. At the beginning of the week, Atlanta artists came to campus and chatted at a Meet-the-Artists Tea. Visitors to the showing found themselves returning again and again, comparing representative work of Agnes Scott students, faculty, and off-campus artists. The question "Which do you like best?" gained added significance because of the auction of fifty pieces at the end of the week.



"GOING," SAYS AUCTIONEER MR. MARTIN AS AUDIENCE BIDS.



PICTURES INVITE REPEATED EXAMINATION.



Campus writers enjoy meeting, chatting with critic Ciardi over cup of punch.

Critics View Scott Literary Efforts

A spirit of excitement characterized the literary aspect of the Fine Arts Festival. A chapel program of Agnes Scott poets reading their own works included poems by both faculty members and students. After these readings, the lecture on "How Does A Poem Mean?" given by John Ciardi, editor and poet, seemed especially relevant. An illuminating panel discussion by Dr. Hayes, Mr. Ciardi, and narrative writer Flannery O'Connor of the spring *Aurora* concluded the literary program.



FLANNERY O'CONNOR COMMENTS ON STORY.



DR. HAYES INTRODUCES DISTINGUISHED PANELISTS.



SIGMA ALPHA IOTA PERFORMS ROBERT BECKWITH'S *MAGNIFICAT FAUXBOURDON*.

Music Emphasizes Modern Movements

Contemporary musical movements and new compositions were emphasized during the Fine Arts Festival. Dr. William Newman, of the University of North Carolina, lectured on "A Curious Era of Chamber Music," besides holding private conferences with music students and leading a master class in organ. Chapel programs featured instrumental music, while a special program included the Glee Club's performance of Choruses from the *Medea* and Sigma Alpha Iota singing *Magnificat Fauxbourdon*.



LECTURER NEWMAN DEMONSTRATES ON PIANO.

PATTY BRUENING, NANCY FULCHER PLAY DUO PIANO NUMBER.





LITTLE MELANIE CAMPBELL HELPED TO PRESENT THE DELIGHTFULLY DIFFERENT LOLLY TU DUM NUMBER.

Dancers Trace Form, Offer Yeats' Drama

Hearty applause greeted the members of Contemporary Dance Group as they completed their part in the Fine Arts Festival. The first of the program was a series of dances illustrating historical forms of the dance. Dancers and speakers then cooperated to present a powerful interpretation of Yeats' dance-drama, *The Only Jealousy of Emer*. Bettie Jane Wooten, dancer and critic, held a master class the following afternoon and discussed the performance.

BOTH EMER, EITHNE INGUBA SEEK CUCHULAIN'S LOVE.



MASTER CLASS TEACHES DANCE MOTIONS.



ANNE PORTRAYS PREDATORY WOMAN OF THE SIDHE.





Sophomores carry the traditional daisy chain for their sister class.

Proud Families Highlight Graduation



SENIORS AND THEIR PARENTS ENJOY CLASS DAY.

Graduation does come, somehow, for seniors who sang "We're beginning to wonder, If we'll ever get through." The last week is crowded—recovering from exams, packing, looking back and forward. The last nights in the Hub pass in song, tears, and smoke. Black robes form part of a pattern, contrasting with sophomores' white dresses and daisy chain on Class Day. Finally they mass before Gaines for Baccalaureate and Graduation. A diploma in hand marks the beginning of a new pattern.



Biology majors gleefully destroy genetics notes at annual book-burning.

A solemn faculty leads the seniors into Presser for the last time.



FOUR YEARS OF TESTS VANISH WITH ONE HANDSHAKE.

"THREE WORDS, MARTHA—YOU DONE GOOD."





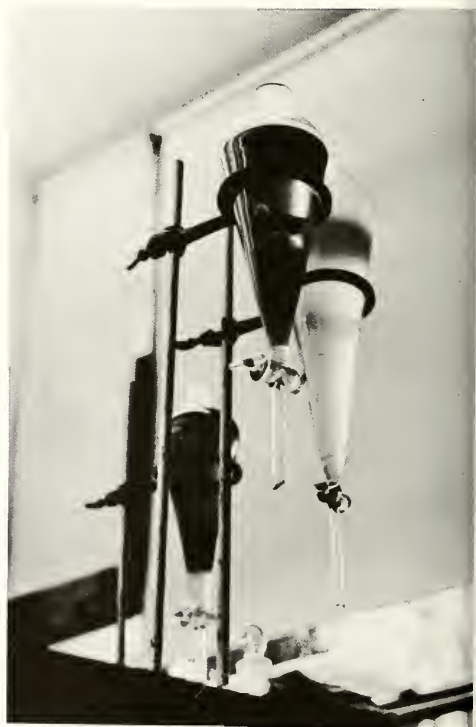


ACADEMICS

Classes, carrels, and Campbell . . . working out the liberal arts ideal . . . broad understanding . . . intensive examination . . . surveys lending perspective . . . narrowed subjects giving depth . . . the faculty . . . communicating enthusiasm . . . teaching attitudes as well as facts . . . creative scholarship . . . long afternoons of labs . . . bugs and bottles . . . seminars around oak tables . . . lectures and quizzes . . . independent study . . . reflecting a fantastic range of interests . . . from rats to Pope to stained glass . . . the anguish of blank paper . . . the miracle of sustained attention . . . spring in the library garden after the trial of winter quarter.



Off-guard



Search



Beyond duty

A Silhouette of Academics



Strength

WIL



WALLACE M. ALSTON
President

Alston, Kline, Trustees Lead Campus

Desks piled high with papers wait as Dr. Alston and Dean Kline turn toward the always open doors of their offices. In between attending campaign dinners and handling routine details, the campus leaders find time to listen to the smallest student problem. Following the commitment of the Board of Trustees to a development program designed to raise eleven million dollars by the college's 75th anniversary, Dr. Alston and Dean Kline continue to pursue the "vision of greatness."



C. BENTON KLINE
Dean of the Faculty



HAL SMITH
Chairman of Board of Trustees

WALLACE M. ALSTON
President



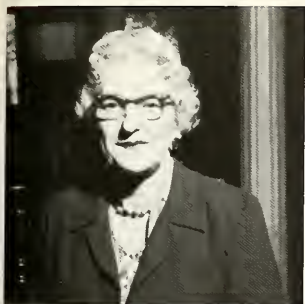
CARRIE SCANDRETT
Dean of Students

Dean and Staff Work in Many Areas



IONE MURPHY
Assistant Dean of Students

Advisor, comforter, and mother are all roles of the Dean of Students, Miss Scandrett. Seniors find job opportunities through the vocational guidance program of Miss Murphy. Mrs. Curry assists applicants for service scholarships. A welcome addition to the Deans' staff this year is Margie Erickson of the class of '59. The staff is an indispensable branch of the administration of Agnes Scott. Without them our social life could not exist!



ELA B. CURRY
Assistant to the Dean of Students



LILLIAN S. McCRACKEN
Assistant to the Dean of Students



MOLLIE MERRICK
Assistant to the Dean of Students



HARRIET H. TALMADGE
Assistant to the Dean of Students



ANN R. PAYNE
Assistant to the Dean of Students



MARJORIE ERICKSON
Assistant to the Dean of Students

MRS. CURRY CHECKS AND INITIALS THE OVERNIGHT SLIP FOR RACHEL FOWLER.



Admissions, Registrar Handle Records



LAURA STEELE
Registrar and Director of Admissions

Catalogs, correspondence, College Boards, and course cards face the Admissions and Registrar's staff every day. They maintain a complete file on students; they send out quarterly reports and student transcript records; they handle registration; they interview prospective students both on campus and in high schools throughout the country; they give special attention to the senior class and they compile and publish the catalog and book of views.



VIRGINIA W. McCLURE
Secretary in the Office of the Registrar and the President



MISS HARLEY SHOWS LIBRARY TO INTERESTED FAMILY.

ANNETTE TEAGUE
Assistant in Admissions and in the Registrar's Office



LOUISE HARLEY
Assistant Registrar and Assistant Director of Admissions

JOYCE T. PACK
Secretary to the Registrar and Director of Admissions



SENIORS FILL OUT THE FAMILIAR FORMS ONCE MORE.



P. J. ROGERS
Business Manager



J. C. TART
Treasurer



HELEN R. TURNER
Secretary to the Business Manager



MARIE S. LEWIS
Secretary to the Treasurer

SUZANNE ESSAM
ELIZABETH R. STEVENSON
SUZANNE W. MCGINTY
Secretaries in the Development
Office

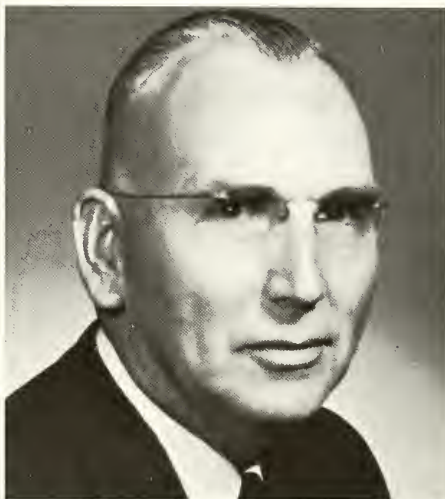


Administrative Staffs Meet Public

Bills, mail, and appointment calendars—the administrative staffs handle the minutia which keep campus life running smoothly. As the financial campaign moved into its active phase in centers all over the United States, Mr. McNair labored toward the attainment of the four and a half million needed to reach Agnes Scott's goal of eleven million dollars. Credit for the most imaginative variation of routine goes to Miss Stapleton, who strung paper chains across Dean Kline's office.



MARY A. BOND
Secretary to the President



W. E. McNAIR
Director of Public Relations and
Development



ANNE STAPLETON
Secretary to the Dean of the Faculty

RUNITA M. GOODE
Manager of the Bookstore

NANCY C. EDWARDS
Director of Publicity

MARTHA O. COKER
Secretary to the Director of Public
Relations and Development





ANNIE MAE SMITH
Supervisor of Dormitories

DOROTHY H. TURNER
Assistant to the Supervisor of
Dormitories

Service Groups Demonstrate Concern

"Lights are out in Gaines Cottage." This is a typical cry heard by Mr. White, who may have to return to the college after hours to replace a blown fuse. Two ways in which Mrs. Hatfield and her dining hall staff show special consideration for Scotties are serving steak during exam times and decorating for certain seasons. Contributions of Dr. Peltz and her staff include remedies for infirmities ranging from a tooth ache to double pneumonia and moral support for those who are sick.



CAMPUS POLICEMEN—*Front row:* M. Jones, J. W. Fowler.
Back row: H. Irwing, A. F. Hudson.



W. B. WILKINSON, College Carpenter

C. DEXTER WHITE, College Engineer

ROSEMONDE S. PELTZ
College Physician



JOHANNA GERKE, RUBY N. LANIER
Assistants to the Dietitian



SANDRA HOLMAN, NANCY R. IVEY, Resident Nurses;
ALICE B. BRAY, Resident Nurse, Not Pictured.



JUANETTE C. BOONE, Assistant Dietitian; ETHEL J. HATFIELD, College Dietitian, Not Pictured.



EDNA H. BYERS
College Librarian



LILLIAN NEWMAN
Assistant Librarian



DOROTHY WEAKLEY
Assistant Director of Alumnae Affairs



Margaret McKelway, Barbara O. Jones, Grace W. Walden, Assistants to the Librarian; Mary Carter, Assistant to the Librarian; Katherine M. Swint, Catalog Librarian.

Librarians, Alumnae Office Stay Informed

Never-ending files are the common bond between the library and Alumnae Office. This year's library staff carried an even heavier burden of work as the building was opened on Sunday afternoons. Articles pro and con integration of southern schools, which were contributed by convinced alums, added interest to the Quarterly. Employees of the Alumnae Office have been kept especially busy for these nine months as they work closely with Mr. French's campaign office in contacting all alumnae.



ANN W. JOHNSON
Director of Alumnae Affairs



BIBA CHECKS ORDER OF RELAY RACE WITH MISS McKEMIE.



LLEWELLYN WILBURN
Associate Professor of Physical Education

Physical Education Enriches Relaxation

Clashing hockey sticks in the fall to cracking bats connecting with softballs in the spring form the range of sounds heard on the athletic field. The Physical Education Department emphasizes not only team sports but also individual activities which students can enjoy now and in later years. Miss Manuel's tennis class or Miss McKemie's badminton matches may prove more taxing than teamwork. Students of modern dance or body mechanics *know* their education is physical.



KATE McKEMIE
Assistant Professor of Physical Education



NANCY M. CAMPBELL
Instructor in Physical Education



HARRIETTE H. LAPP
Assistant Professor of Physical Education



KATHRYN A. MANUEL
Assistant Professor of Physical Education



ELLEN D. LEYBURN
Professor of English



GEORGE P. HAYES
Professor of English



INFORMALITY OF DR. HAYES' OFFICE LIVENS DONNE.



JANEF N. PRESTON
Assistant Professor of English

MARGRET G. TROTTER
Associate Professor of English



ANNIE M. CHRISTIE
Associate Professor of English



MARGARET W. PEPPERDENE
Associate Professor of English





MARY L. RION
Assistant Professor of English



SARAH E. JACKSON
Visiting Instructor in English



ELVENA M. GREEN
Assistant Professor of Speech and
Dramatic Art

English and Drama Spark Creativity

Sophomores sing of "reading, 'riting, and 'rithmetic, taught behind the old red brick." In English and speech classes they encounter two-thirds of this educational formula, in addition to a variety of other subjects. Chaucer students agree that middle English is almost a "foreign" language; freshmen explore the history of Ireland while reading Joyce; and pupils in drama and play production feel the lure of the stage as they read, analyze, and produce dramatic masterpieces.



SCOTTIES TURN CARPENTERS FOR THE FALL PLAY.



ROBERTA WINTER
Associate Professor of Speech and Dramatic Art



C. BENTON KLINE
Assistant Professor of Philosophy



SENIORS DEBATE PHILOSOPHY AT DEAN KLINE'S HOUSE.

Bible, Philosophy Inspire Questions

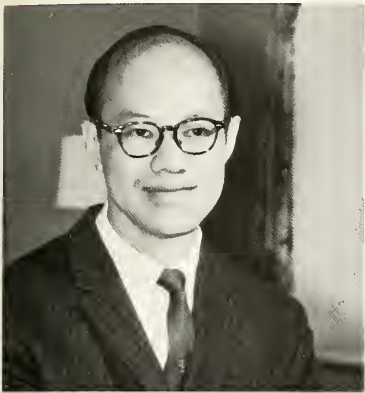
WALLACE M. ALSTON
Professor of Philosophy



In the Bible and philosophy departments, history and literature form the background for an approach to current problems. Bible students deal with subjects as diverse as Apocalyptic literature, the ancient Middle East, and contemporary American religions. Delegates from Sewanee, Davidson, Emory, and the University of Chattanooga visited Agnes Scott in February to discuss Marx and dialectical materialism at the annual Undergraduate Philosophy Conference.



MERLE G. WALKER
Assistant Professor of Philosophy



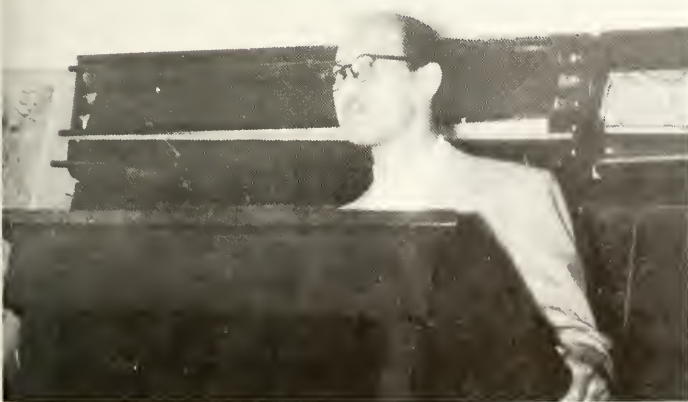
KWAI SING CHANG
Associate Professor of Bible and Philosophy



PAUL L. GARBER
Professor of Bible



MARY L. BONEY
Associate Professor of Bible



"AGAPE is the highest Christian love;
there you have it in a nutshell."



MURIEL HARN
Professor of German and Spanish



FLORENE J. DUNSTAN
Associate Professor of Spanish



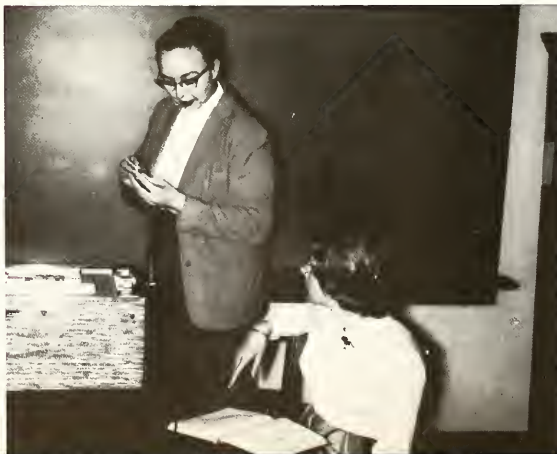
ELOISE HERBERT
Assistant Professor of Spanish



MELISSA A. CILLEY
Assistant Professor of Spanish



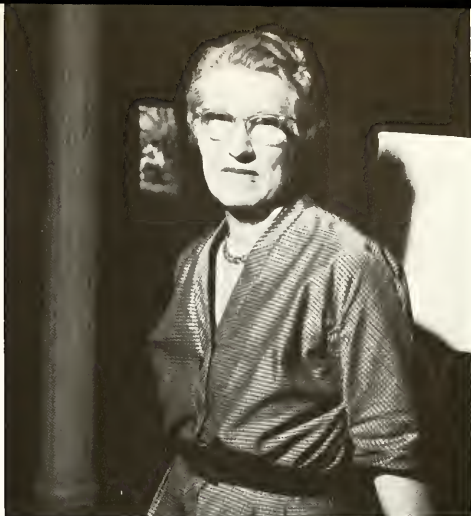
MARIA C. KANE
Instructor in German



Marijke improves her Spanish accent with help from Miss Herbert and tape recorder.



MARY V. ALLEN
Associate Professor of French



MARGARET T. PHYTHIAN
Professor of French

Variety Enlivens Modern Languages

Record players, earphones, afternoon pronunciation classes with Monsieur Thomas are an integral part of the lives of modern language students. Informal teas with Miss Harn and Mrs. Kane foster conversation in "deutsch." Variety spices lives of French students as they study important works from the Medieval *La Chanson de Roland* to contemporary poetry. Native carols learned in language classes are a traditional feature of the campus Christmas party.



FRANCES CLARK
Assistant Professor of French

PIERRE THOMAS
Assistant Professor of French



CHLOE STEEL
Assistant Professor of French



MARGARET B. SEWELL
Instructor in French





HARPER'S IS ESSENTIAL FOR LATIN TRANSLATION.



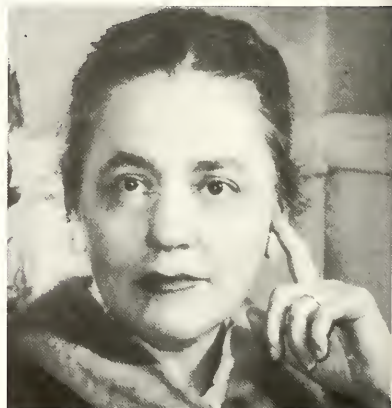
M. KATHRYN GLICK
Professor of Classical Languages
and Literatures



ELIZABETH ZENN
Associate Professor of Classical Languages
and Literatures

Greek, Roman Gifts Have Ageless Value

Stressing our heritage from the Greeks and Romans, three exciting professors bring investigation and insight into all areas of ancient life. Students of classical civilization read the literature that has become a model for subsequent ages. Homer, Juvenal, and Plato are studied in the original Latin and Greek; the *Iliad* and *Aeneid* are mastered. Tiny pieces of pottery and massive sculpture and architecture reveal "the glory that was Greece and the grandeur that was Rome."



MYRNA G. YOUNG
Assistant Professor of Classical Languages
and Literatures



MARIE HUPER
Associate Professor of Art

Art Exhibits Draw Nation-wide Works

Critical and creative potentialities are realized for many students through the two-fold purpose of the Art Department. Art history courses bring greater understanding and appreciation of the work of artists. The media of oil, charcoal, and clay provide creative experiences. Campus interest is promoted through worldwide art exhibits. This year a group of interested art students are planning to raise money to buy fine pieces of art for the college.



FERDINAND WARREN
Professor of Art



ABSTRACTION ASSUMES FORMS OF DANTE, VIRGIL.



ROBERT F. WESTERVELT
Assistant Professor of Art



MICHAEL McDOWELL
Professor of Music



MARY MEADE'S FACE REFLECTS THE SERIOUS PIECE.

TIMOTHY MILLER
Associate Professor of Music



ROXIE HAGOPIAN
Associate Professor of Music



JOHN L. ADAMS
Assistant Professor of Music



Listeners, Performers Value Music

At almost any hour of the day or night music majors may be found in the basement of Presser pouring over a music theory text, singing a German love song, or playing homage to the "Three B's" on the piano or organ. Their interest does not stop with learning chord progressions or the scales, but it continues through every phase of musical knowledge. Classes range from the basic appreciation course to history of music, counterpoint, choral directing, and composition.



LILLIAN R. GILBREATH
Instructor in Music

Stance, tone, expression, intonation, key—
Doris wonders if she can remember it all.



MARLENE BAVER
Visiting Instructor in Music

IRENE L. HARRIS
Instructor in Music



Social Sciences Add Anthropology

Active in campus affairs already are three new professors: Mr. Martin, Mr. Tumblyn, and Mr. Brown. Democrats Martin and Cornelius and Republican Posey kept campaign interest high. Information of South America related first hand by Mr. Tumblyn helped make Anthropology the fascinating course students had anticipated. An Englishman's view of English history was a unique contribution of Mr. Brown. Innovation was definitely the keynote of the social sciences this year.



ANNA G. SMITH
Associate Professor of Economics
and Sociology



CHARLES F. MARTIN
Assistant Professor of Economics



"NOW—WHAT'S AN EXAMPLE OF MULTIPLYER EFFECT?"



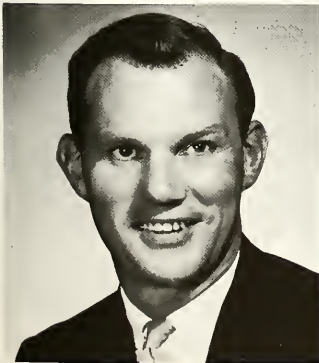
JOHN A. TUMBLIN
Visiting Associate Professor of Sociology
and Anthropology



WILLIAM G. CORNELIUS
Associate Professor of Political Science



KOENRAAD W. SWART
Associate Professor of History



MICHAEL J. BROWN
Visiting Instructor in History



WALTER B. POSEY
Professor of History and Political Science



FLORENCE SMITH
Associate Professor of History
and Political Science



ELIZABETH C. STACK
Associate Professor of Education

Education Is Viewed From Teaching Angle

What is *my* philosophy of education? This is an annual question which education students must answer as they study philosophers from Socrates to John Dewey. Only during practice teaching, when a student has the thrill of being on the other side of the desk, can she learn what teaching is *really* like. Testing the theories investigated in Methods class gained emphasis this year, when for the first time this course was combined with practice teaching.



CONANT REPORT KEEPS HELEN BUSY 'TIL WEE HOURS.



MIRIAM HOWELL
Assistant Professor of Education



EDWARD T. LADD
Associate Professor of Education



MIRIAM K. DRUCKER
Associate Professor of Psychology



GEORGE E. RICE
Professor of Psychology

Psychology Fosters Valid Self-concept

Freud is more than sex. Students prejudiced against Psychology soon discover that it is not a pseudo-science or just common sense. Experimental, a basic course for future graduate students, offers an opportunity to play psychologist. "Neurosis" and "psychosis" lose their remote quality for classes in Abnormal. Child Psychology is fun for the student who visits "her" child for observation and simultaneously gains understanding of her own personality.



DR. RICE SHOWS STUDENTS A RAT REACTING TO MAZE.



KATHARINE T. OMWAKE
Associate Professor of Psychology



W. J. FRIERSON
Professor of Chemistry



MARION T. CLARK
Visiting Associate Professor of Chemistry

MARY W. FOX
Instructor in Chemistry



JULIA T. GARY
Associate Professor of Chemistry



FLIP CLOSES STOPCOCK TO READ P. OF BENZENE.

Chemistry Exacts Mastery of Problems

Along with formulas of sodium carbonate and hydrogen sulfide, chemistry pupils have memories of experiments conducted to the strange tune Dr. Frierson hums, the mysterious gleam in Miss Gary's eyes as she distributes unknowns, and Dr. Clark's dramatic, "Now pretend that you are an isopropyl iodide molecule on Night Beat!" On the third floor of Campbell they work in the lecture rooms, offices, laboratories. In the chemistry library lights burn almost every night for work on problems.



S. LEONARD DOERPINGHAUS
Assistant Professor of Biology



JOSEPHINE BRIDGMAN
Professor of Biology

Biology Stresses Both Theory and Lab

Love of lab work is a requirement for biology majors. In Mr. Parrish's Invertebrate freshmen even seem to enjoy overtime hours! But in 101 all panic at Mrs. Gray's pop quizzes. Upperclassmen get frantic when Miss Grose's deadline for histology slides comes near. Those who take genetics find that Miss Bridgman DOES know all about fruit flies. And familiar to majors and non-majors alike are Dr. Doerp and Maggie checking in on Campbell at night.

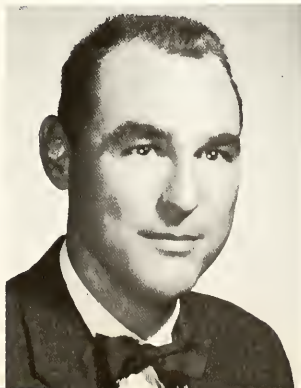


ANNE FIXES SLIDE TO NOTE MUTATIONS IN RAT.

NANCY P. GROSECLOSE
Assistant Professor of Biology

FRED K. PARRISH
Instructor in Biology

NETTA E. GRAY
Instructor in Biology





HENRY A. ROBINSON
Professor of Mathematics



LESLIE J. GAYLORD
Assistant Professor of Mathematics



SARA L. RIPPY
Assistant Professor of Mathematics

Math Builds Logical Thinking, Precision

Math *can* be more than that lost feeling—though the senior Modern Abstract class disagrees when confronted by $1 + 1 = 1$. Only Miss Gaylord's eternal patience towards questions can dispel the confusion of bewildered beginning calculus students. Confounded freshmen feel grateful for the long hours Dr. Rob spends in his office with them. Majors feel exhausted at the long hours they must spend solving "Diffique" equations and practical problems, a must for a math career.

MARY B. WILLIAMS
Instructor in Mathematics



STUDENT PLOTS AN ELLIPSE IN ANALYTICAL GEOMETRY.





ALICE FINDS THAT THIS ELECTRICAL CIRCUIT IS TRICKY.



WILLIAM A. CALDER
Professor of Physics and Astronomy

Space Age Demands Physics, Astronomy

Getting up at three in the morning for the best view of a satellite may be a laboratory exercise for astronomy students. Bradley Observatory's 30-inch telescope is the largest in this area. More conventional equipment in the physics department provides for courses ranging from photography, a non-major favorite, to electronics. Professor Calder, an outstanding "star-gazer" of the Southeast, stirs off-campus interest in science through an astronomy club.

HENDRIK R. HUDSON
Assistant Professor of Physics and Astronomy



"I HOPE THAT THESE NEGATIVES AREN'T TOO DENSE."





Dr. Garber constructs accurate scale models from descriptions of Old Testament temples.

MR. PARRISH STUDIES *NESSARIUS* EGG POLARITY.



PAPER CHROMATOGRAPHY OCCUPIES DR. FRIERSON.

Creative Scholarship Marks Faculty

Despite teaching loads, Agnes Scott faculty members find time for writing, experimentation, and artistic production. Their achievements range from poetry to precise scientific studies. Dr. Posey, head of the history department, publishes books on aspects of the Old South. Articles by many teachers appear in scholarly journals. On these pages, the *Silhouette* recognizes typical faculty projects, currently in progress, in art and Bible, chemistry, psychology, and biology.

Exhibit in Kansas City, shows at the New Arts Gallery and Atlanta Arts Association recognized Ferdinand Warren.



Dr. Rice's study of "altruism" in albino rats finds if a rat will help another in "distress."





CLASSES

*All united, yet each one an individual . . .
bright faces . . . eagerness, vigor, and new
ideas . . . the contributions of the Fresh-
men . . . busy helpers . . . serving as a link
between the new and the old . . . growing
pains . . . Sophomores . . . first taste of
real responsibility . . . cottage living . . .
a year of preparation for full leadership . . .
Junior Class . . . Seniors . . . guiding . . .
sharing the knowledge and insight gained
in three previous years of college life . . .
return of freshman feelings with thoughts
of the future . . . four classes . . . each
giving uniquely to Agnes Scott.*



Silent Signs of Chapel

Concentration



A Silhouette of Classes



"Secret Garden"



Oblivion



Always White, Always Up



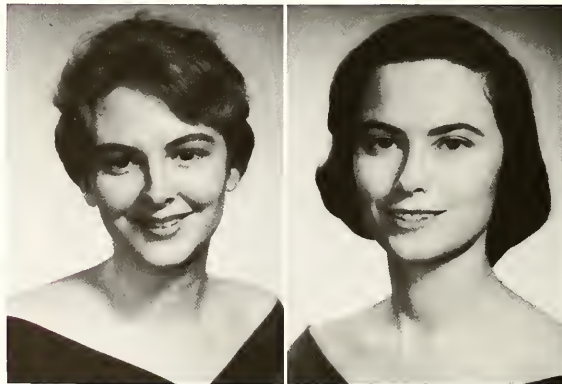
SENIOR CLASS OFFICERS: Nancy Stillman, President; Lucy Scales, Secretary-Treasurer; Barbara Baldauf, Vice President.

Seniors Experience Mixed Emotions

Eloise and the class of '61 found the senior year one of paradoxes. Childish glee typified by Little Girls' Day fell fast upon the more grown-up hours of Marriage Class. Parties and dances were dimmed by the more serious moments of Investiture and Graduate Records. Emotions, too, were mixed. Pride was felt for things accomplished; regret in things left undone. There was joy and anticipation of the future; sadness with the thought of leaving friends behind.

SUSAN ANN ABERNATHY
Newport News, Virginia
Philosophy

MARY ANNE McSWAIN ANTLEY
Atlanta, Georgia
English



Seniors

EVELYN ANN ASHFORD
Kingsford, Michigan
Spanish



ANNA MARIA AVILES
Atlanta, Georgia
History and Political Science



BARBARA CLAIRE
BALDAUF
Camden, South Carolina
History and Political Science



JANE BRINGHURST
BARKER
Atlanta, Georgia
History



NANCY CAROL BARR
Rome, Georgia
Mathematics



NANCY SAUNDERS
BATSON
Knoxville, Tennessee
Art



LAURETTA WANDELL
BAUMGARDNER
St. Simons Island, Georgia
Art



MAURINE ELIZABETH
BELLUNE
Greenville, South Carolina
French



JANE CAMPBELL BENNET
Quitman, Georgia
History



Seniors



PAMELA JEAN BEVIER
Kerrville, Texas
French



WHO'S WHO: Nancy Batson, Pam Sylvester, Page Smith.



MARTHA ALICE BOYKIN
Carrollton, Georgia
Mathematics



JUDITH CLARK BRANDEIS
Decatur, Georgia
French



JEAN BRENNAN
Columbus, Georgia
Economics



ANNE LANSDALE BROAD
Jackson, Mississippi
Biology
Honor Roll, 1959-1960



DONNA JEAN BROCK
Honesdale, Pennsylvania
History



CORNELIA PERSONS
BROWN
Fort Valley, Georgia
History and Political Science

Seniors



WHO'S WHO: Betsy Dalton, Mary Wayne Crymes, Trish Walker.



SALLY LOUISE BRYAN
Atlanta, Georgia
History

MARGARET VIRGINIA
BULLOCK
Hamlet, North Carolina
Mathematics
Honor Roll, 1959-1960



DOROTHY FRANCES
BURNS
West Palm Beach, Florida
Biology



JOAN FALCONER BYRD
Lakeland, Florida
Art



KATHRYN ANNE
CHAMBERS
LaGrange, Georgia
Psychology



FAITH YAO YU CHAO
Forest Hills, New York
Mathematics



WILLIE BYRD CHILDRESS
Bedford, Virginia
Psychology



Seniors



ELEANOR ANNE CHRISTENSEN
Beaufort, South Carolina
Mathematics



MARY JAMES CLARK
Atlanta, Georgia
Mathematics



ELIZABETH BARBER COBB
Atlanta, Georgia
Art



ALICE WALKER COFFIN
Ellaville, Georgia
English



CARROLL POPE CONNOR
Columbia, South Carolina
History and Political Science



EDITH ROBINSON CONWELL
Richmond, Virginia
Mathematics



JANE HOFFMAN COOPER
Camden, South Carolina
English



ANN AVANT CRICHTON
Decatur, Georgia
History



MARY PARK CROSS
Louisville, Kentucky
French

Seniors

MARY WAYNE CRYMES
Charlotte, North Carolina
English



MARY ELIZABETH DALTON
Charlotte, North Carolina
History and Political Science



LUCY MAUD DAVIS
Lynchburg, Virginia
Philosophy



BETTY SANDRA DAVIS
Columbia, South Carolina
History



LUZIE MARGUERITE DICKERT
Greenville, South Carolina
Music



MARY BETH ELKINS
Alpharetta, Georgia
History



SARAH HELEN EVERETT
Rome, Georgia
Political Science and History



FAY DIANNE FOSTER
Spartanburg, South Carolina
Psychology



RACHEL ANN FOWLER
Toccoa, Georgia
Music
Honor Roll, 1959-1960



Seniors



WHO'S WHO: Sarah Helen High, Pete Brown, Missy Moore.



MELL ALICE FRAZER
Mobile, Alabama
English

ELIZABETH ANN
FULLER
Atlanta, Georgia
Psychology

FLORENCE ANN
GAINES
Brevard, North Carolina
Mathematics

NANCY ELLINGTON
GLASS
Atlanta, Georgia
English



CAROLINE TENSE
GOODWIN
Atlanta, Georgia
Mathematics

VIRGINIA GAYLE
GREEN
Danville, Virginia
Psychology

MARION LUCINDA
GREENE
Birmingham, Alabama
Mathematics



Seniors



ALVA HOPE GREGG
Birmingham, Alabama
English



WHO'S WHO: Dotty Burns, Anne Broad, Ann McBride.



KATHERINE CRAVEN
GWALTNEY
Smithfield, Virginia
History



CHRISTY HAGES
Birmingham, Alabama
Mathematics



NANCY FARROW HALL
Charlotte, North Carolina
Mathematics



MARTHA BROCK
HANNA
Carrollton, Georgia
English



MARY JANE
HENDERSON
Greenville, South Carolina
Mathematics



JANICE LYNNE
HENRY
Nashville, Tennessee
Mathematics

Seniors



**HARRIET ELIZABETH
HIGGINS**
Griffin, Georgia
Chemistry

**NANCY JANE BOOTHE
HIGGINS**
Portsmouth, Virginia
History

SARAH HELEN HIGH
Whiteville, North Carolina
Music



MARY ELIZABETH HILL
Lancaster, Ohio
English

ELLEN VIRGINIA HINES
Spartanburg, South Carolina
Philosophy

PATRICIA HOLMES
Kingstree, South Carolina
History and Political Science
Honor Roll, 1959-1960



ANNIE EVANS HUGHES
Golden, Colorado
History and Political Science

LINDA JANE INGRAM
Tuscaloosa, Alabama
French

LORNA JO JARRELL
LaGrange, Georgia
Psychology

Seniors

MARIAN ZIMMERMAN
JENKINS
Atlanta, Georgia
History and Political Science
Honor Roll, 1959-1960



VIRGINIA PHILIPPA
JOHNSON
Atlanta, Georgia
English



JUANITA LOUISE JUAREZ
Tampa, Florida
Psychology



SARA VIRGINIA KELLY
Monroe, Georgia
History and Political Science



SARAH LEAH KELSO
Birmingham, Alabama
History and Political Science



KATHERINE EMILY KEMP
Macon, Georgia
English

ROSEMARY KITTRELL
Columbia, South Carolina
Physics



MARTHA ELLIOTT
LAMBETH
Richmond, Virginia
French



MARSHA PURDY LEAR
Valdosta, Georgia
Art



Seniors



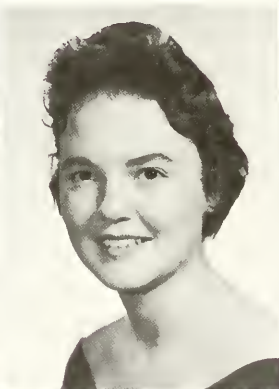
GUTHRIE HOOD
LEMMOND
Matthews, North Carolina
History



THE PLIGHT OF A SENIOR: WEEKLY DRY-CLEANING ROUNDS.



MILDRED ELSIE LOVE
Blacksburg, Virginia
Mathematics
Honor Roll, 1959-1960



HARRIETT ELDER
MANLEY
Selma, Alabama
Political Science and History



NINA LOUISE MARABLE
Jacksonville, Florida
Chemistry



ANNA EUGENIA MARKS
Augusta, Georgia
Psychology



MEDORA ANN McBRIDE
Alexandria, Louisiana
Biology



MILDRED MYERS
McCRAVEY
Forest, Mississippi
History

Seniors



EDNA ELIZABETH McLAIN
Buford, Georgia
Chemistry



Ring fingers display precious symbols of a happy future.

DINAH LUCY McMILLAN
College Park, Maryland
History



ANNE LEIGH MODLIN
Knoxville, Tennessee
English



MARY JANE MOORE
Memphis, Tennessee
Biology



NANCY ADAMS MOORE
Mobile, Alabama
French



PRUDY ANNE MOORE
Charlotte, North Carolina
History



BARBARA DIANE MORDECAI
Savannah, Georgia
Psychology



Seniors



LETTITA WOOLFOLK MOY
Cairo, Georgia
History

MARTHA ANNE NEWSOME
Albany, Georgia
English

MARION NORTH
Atlanta, Georgia
Philosophy



EMILY CAMPBELL
PANCAKE
Romney, West Virginia
Chemistry

GRETCHEN ELLIOTT
PEACOCK
Decatur, Georgia
Art

GRACE ANN PEAGLER
Homerville, Georgia
History and Political Science



MARGARET VIRGINIA
PHILIP
LaGrange, Georgia
Chemistry
Honor Roll, 1959-1960

ANNE VARNADO POLLARD
Kingsport, Tennessee
Mathematics

CHARME ELIZABETH
ROBINSON
East Point, Georgia
Mathematics

Seniors

JOANNA DOUGLAS RODEN
Richmond, Virginia
Mathematics

HELEN PATRICIA ROGERS
Chattanooga, Tennessee
Psychology

ANNE MARIE RUSSELL
Dobbs Ferry, New York
English



LUCY ROPER SCALES
Greenville, South Carolina
Mathematics

MOLLY JANE SCHWAB
Columbia, South Carolina
English

REBECCA JOYCE SEAY
Selma, Alabama
Psychology
Honor Roll, 1959-1960



MARTHA HARRIET SMITH
Hickory, North Carolina
History

KATHRYN PAGE SMITH
Newport News, Virginia
Chemistry

ELIZABETH HAMMOND
STEVENS
Decatur, Georgia
Sociology



Seniors



NANCY MARTIN
STILLMAN
Huntington, West Virginia
History

NANCY ADA STONE
Fitzgerald, Georgia
English

ELLEN PAMELA
SYLVESTER
Decatur, Georgia
Chemistry



LINDA GRANT TEASLEY
Decatur, Georgia
English

VIRGINIA CAROLINE
THOMAS
Asheville, North Carolina
Chemistry
Honor Roll, 1959-1960

CAROLINE SIMMONS
THOMAS
Marietta, Georgia
History and Political Science

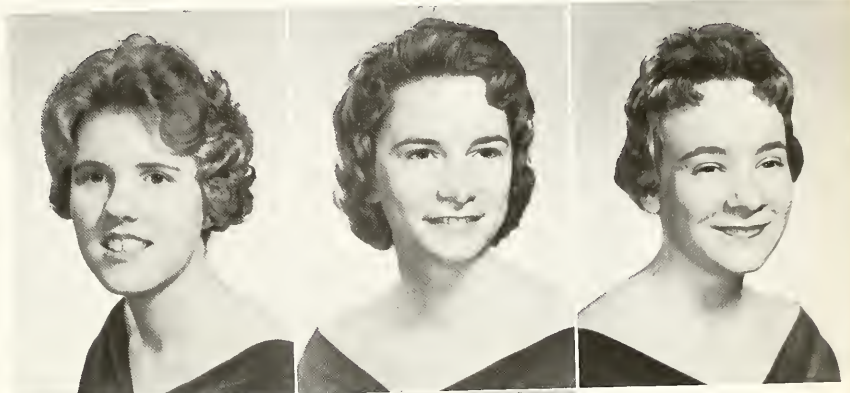


ESTHER FRANCES
THOMAS
Jesup, Georgia
Philosophy

ELIZABETH SHEPLEY
UNDERWOOD
Atlanta, Georgia
Sociology

PATRICIA WHITE
WALKER
Macon, Georgia
History and Political Science

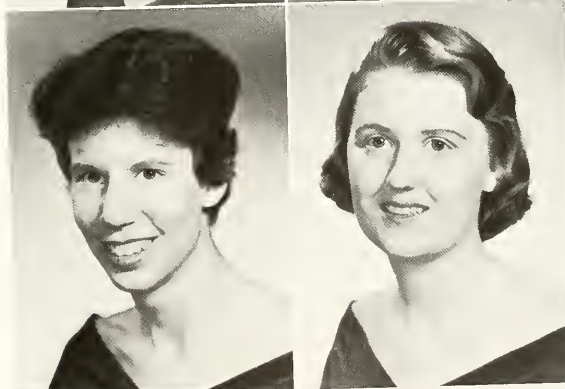
Seniors



MARY FAIRFAX WARE
Oakland, California
English

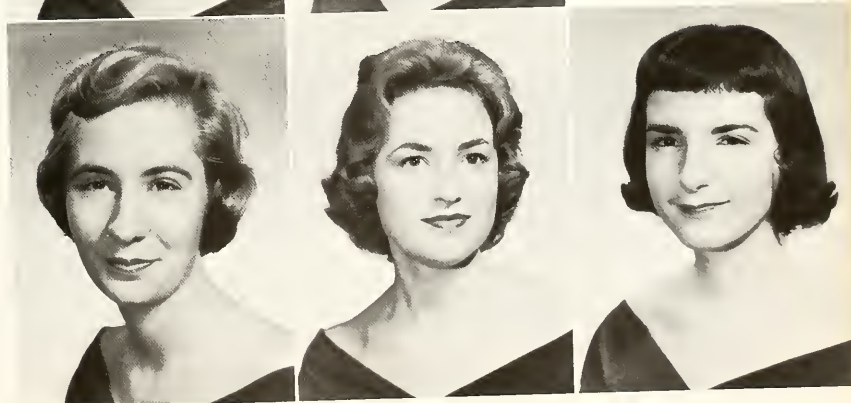
ANE SIMMONS WELTCH
Augusta, Georgia
Mathematics

PENNY ELIZABETH
WILLIAMS
Moultrie, Georgia
Sociology



PAULA ANN WILSON
Savannah, Georgia
Art

FLORENCE CALLAWAY
WINN
Clinton, South Carolina
French



ANN NEAL WOMELDORF
Charleston, South Carolina
Philosophy

BETTY SUE WYATT
Roanoke, Virginia
Biology

MILDRED LAFON
ZIMMERMANN
Jackson Heights, New York
French
Honor Roll, 1959-1960

New Responsibilities Occupy Juniors



JUNIOR CLASS OFFICERS: Ann Thomas, Secretary-Treasurer; Lillian Smith, Vice President; Nancy Bond, President.

Returning to school early, juniors took over the cottages along with the joy of shepherding freshmen during orientation. Highlights crowded one another. Fall saw starting a major in earnest. Defense of an undefeated record in swimming brought the third aquatic championship. In winter quarter, juniors "jaunted" for a week of fun and funds for charity. Tension swept the library as Mortar Board tapped its new president. Then spring and caps pointed to next year.



Doris B. Ackerman



Sarah Adams



Sherry Addington



Susan Alexander



Vicky Allen

Juniors



Caroline Askew
Honor Roll, 1959-1960



Nancy Barrett



Sara Blomquist



Betsy Boatwright



Nelia Adams views Munich
with statue of Bavaria.



Sallie Boineau
Honor Roll, 1959-1960



Nancy Bond



Meade H. Boswell



Carey Bowen

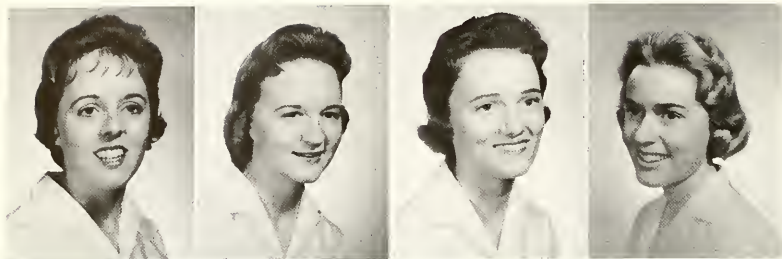


Clara Jane Buchanan



Germaine Calhoun

Juniors

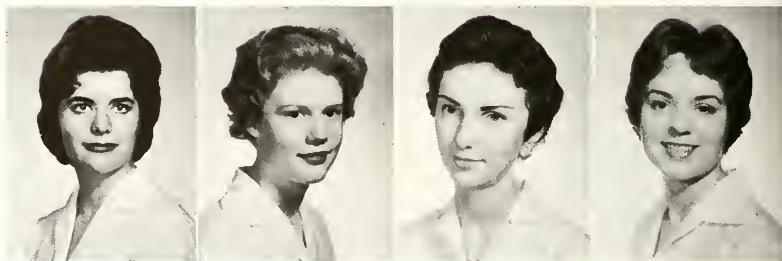


Martha Campbell

Jo Claridy

Vivian Conner

Carol Cowan

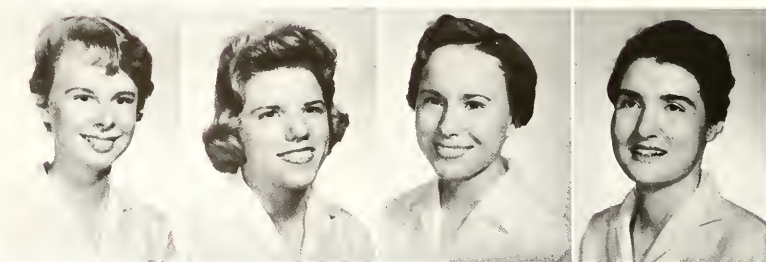


Beth Crawford

Mary Holman Curd

Ellen DeLaney

Molly Dotson



Judy Duncan

Emily Ann Evans

Pat Flythe

Marian Fortson

Juniors



Peggy Frederick



Livingston Gilbert



Betty Gillespie



Kay Gilliland
Honor Roll, 1959-1960



GERMAN STREETCLEANER BEFRIENDS SUE AMIDON.



Harriett Glover



Susan Grey
Honor Roll, 1959-1960



Adrienne Haire



Betty Jean Harper



Mary Agnes Harris



Janice Heard

Juniors



Nancy Heath

Judy Heinz

Beth Hendee

Harriett Smith Henderson

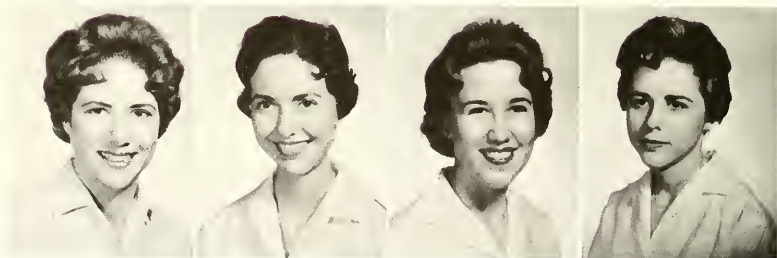


Cindy Hind

Margaret Holley

Judy Holloway

Betty Hopkins



Lynda Horn

Beth Hughston

Ann Hutchinson

Carole Jackson

Juniors



Betsy Jefferson



Thelma Jenkins



Penny Johnston



Kit Kallman



EDITH HANNA ABSORBS SCOTCH ATMOSPHERE.



Jane Kelley



India Yvonne Kemp



Beverly Kenton
Honor Roll, 1959-1960



Milling Kinard



Sara Kipka



Elizabeth Kneale

Juniors



Lynne Lambert



Linda Lentz



Mary Ann Leslie



Helen Linton



Peggy Mathis Lipsey



Bonnie Lockhart



Patsy Luther



Alice Maxwell



Peggy McGeachy



Ann McLeod

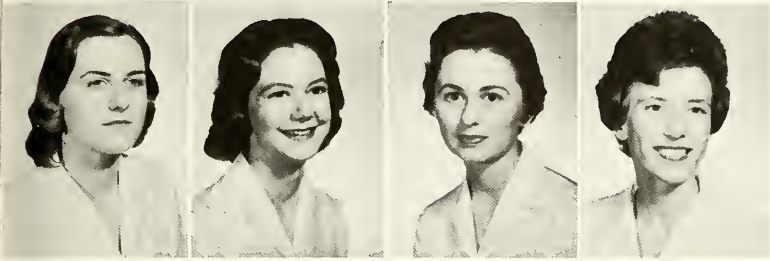


Jean Medearis



Ellen Middlebrooks

Juniors



Ann Middlemas

Susan Mustoe

Jane Nabors

Nancy Nelms

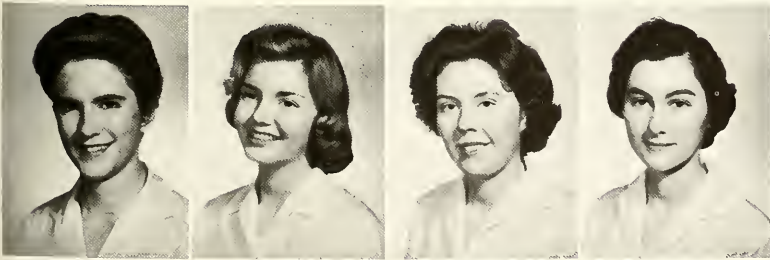


A YEAR IN PARIS AWAITS ANN GAYLE HERSHBERGER.



Ethel Oglesby

Polly Page



Elizabeth Pancake

Jane Patterson

Dorothy Porcher

Sylvia Pruitt

Juniors



Margaret Fox Roberts



Carol E. Rogers



Carroll Rogers
Honor Roll, 1959-1960



Lebby Rogers



Joanna Russell



Doris Sanders



Elaine Sayers



Lucy Schow



Ruth Seagle



Ruth P. Shepherd



Margaret Ann Shugart
Honor Roll, 1959-1960



Elaine Smith



Annette Smith



Jo Allison Smith

Juniors



Lillian Smith



Sandy Still



Mary Stokes



Ann Lee Sullivan



Letitia Sweitzer



Anne Thomas
Honor Roll, 1959-1960



Ann Thompson
Honor Roll, 1959-1960



Joyce Townsend



Rose Marie Traeger



Bebe Walker



Katherine White
Honor Roll, 1959-1960



Jan Whitfield



Elizabeth Withers



Ann Dudley Wood

“They” Becomes “We” for Sophomores



SOPHOMORE CLASS OFFICERS: Kay Younger, Vice President; Sally Ann Rodwell, President; Betsy Schenck, Secretary-Treasurer.

Walters and Hopkins echoed with the sounds of a traditionally exuberant class. This was THE year, the year for getting pinned, for the experience that is Dr. Hayes quoting Horace. This was the year of increasing responsibility, interpreting Scott to freshmen, contributing leadership on boards. Mothers and fathers were helpful in combatting the dread grayness of winter quarter through Sophomore Parents Weekend. Spring brought ACS rings, symbol of becoming upperclassmen.



Nancy Faye Abernethy

Sally Elizabeth Addison

Patricia Allen

Virginia Allen

Frances Anderson

Sophomores



Mary Mead Andrew



Jane Cate Ayres



Angelina Bagiatis



Frances Ann Bailey



Beth Barnett



Willette Barnwell



Leewood Bates



Sally Bergstrom



Jacquelyn Binkley



Judy Brantley



Doris Bray



Barbara Brown



Damaris Etta Brown



Becky Bruce



Patty Bruening
Honor Roll, 1959-1960



Susan Cantey Bryan



Cornelia Bryant



Bryce Burgess

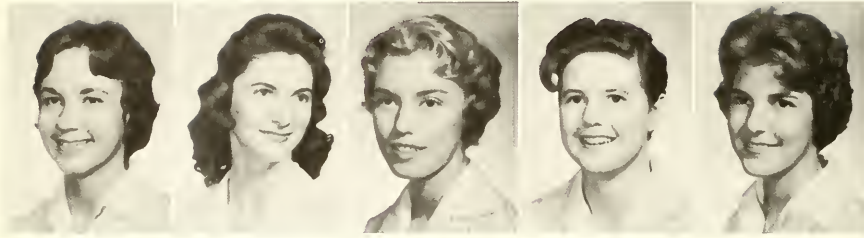


Nancy Butcher



Lucie Callaway

Sophomores



Teresa Carrigan

Sandra Chandler

Martha Chew

Carolyn Coble

Lynne Cole



BIRTHDAY TOASTS FOR FRANIE BAILEY ENLIVEN INFIRMARY.



Patricia Conrad

Polly Craig

Rebecca Craig

Sandi Creech

Lylla Crum

Sophomores



Judy Cruthirds



Sarah Cumming
Honor Roll, 1959-1960



Linda Davis



Patricia Davis



Ann Powel Debele



Lynn Denton



Tina Doherty



Leland Draper



Nancy Lee DuPuy



Nancy Malloy Duvall



Jo Ann Eckardt



Susan Hall Elam



Gloria Ellis



June Kennette Farlowe



Letitia Brown Faucette



Susan Elizabeth Favor



Mary Jane Fincher



Anna Belle Freeman

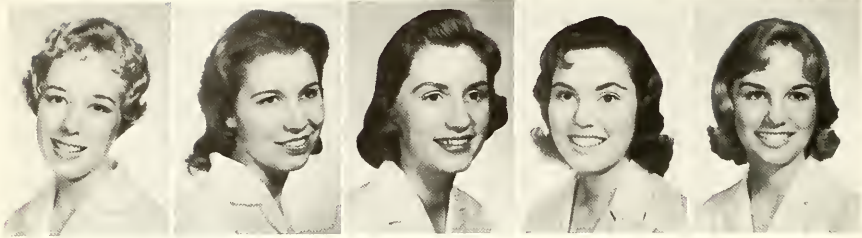


Nancy Fulcher



Betty Ann Gatewood

Sophomores



Lindy Gearreald

Nancy Ethiel Ghesling

Jane Gilbertson

Lucy Harrison Gordon

Mary Ann Gregory



SLEEPY WALTERS SOPHOMORES SLOWLY EXIT DURING FIREDRILL.



Jane Hancock

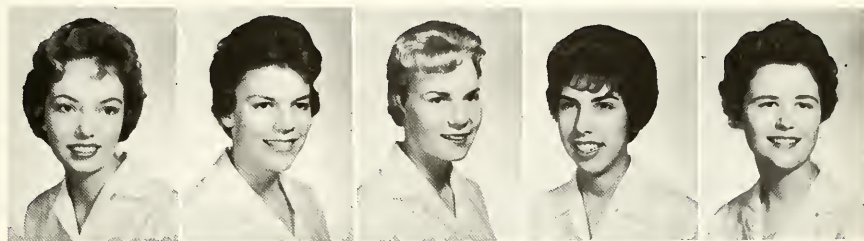
Sigrid Hanson

Karen Haralson

Ann Hardesty

Margaret Grogan Harms

Sophomores



Bonnie Hatfield

Carolyn Hattox
Honor Roll, 1959-1960

Judith Hawley

Sue Heinrich

Carol Hickey



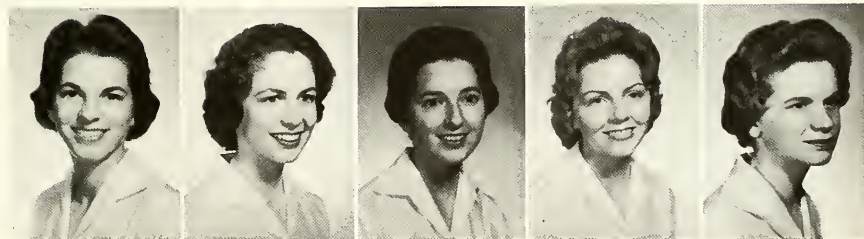
Ellen Hodgson

Jo Ann Hoit

Lynn Hormell

Alethea Hudson

Mary Louise Hunt



Jean Hunter

Betty Hatcheson

Sandra Johnson

Helen Jones

Ina McAfee Jones



Lelia Jones

Donna Kelleher

Shari Anne Kelly

Mary Jean Kinghorn

Margaret Kirby

Sophomores



Dot Laird

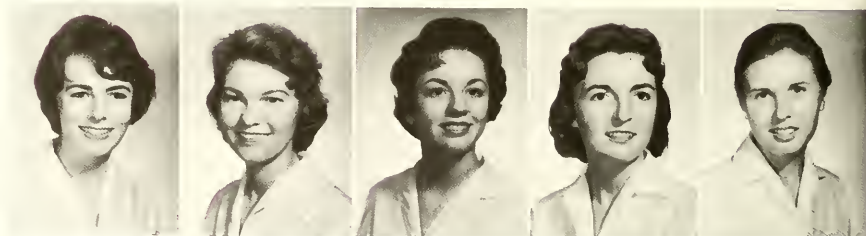
Jane Lancaster

Irene Lavinder

Elizabeth Dillard Libby

Lyn Linskog

Carolyn Pollard alias Ariel
shows Shakespearean spirit.



Connie Judith Little

Bonnie Loving

Carryl Pat Lowe

Carolyn Marie Lown

D'Nena Lowrance

Sophomores



Mary Hampton Lowry



Mary Ann Lusk
Honor Roll, 1959-1960



Leigh Maddox



Ellen Deal McArthur



Nancy McCoy



Page McGavock



Sue McKenzie



Margaret McKinley



Martha M. McKinnon



Valerie McLauahan



Patricia McLaurin



Joel Anne Miller



Kathryn Louise Mobley



Laura Ann Mobley



Lucy Floyd Morcock



Merle Morrow



Martha Mossman



Julia Moye



Patty Omera Nickel



Pat O'Brian

Sophomores



Kaylynn Ogburn



Bette Parsons



Nona Pendleton



Linda June Plemons
Honor Roll, 1959-1960



Doris Poliakoff



"Sophs are best," sing sponsors,
Anna Belle leading class spirit.



Carolyn Pollard



Ida Elizabeth Pound



Rebecca Rau



Ann Risher



Kay Robertson

Sophomores



Sally Ann Rodwell



Anne Claiborne Rose
Honor Roll, 1959-1960



Miriam W. St. Clair



Ann Saylor



Betsy Schenck



Anneke Schepman



Colby Scott



Susan Sevier



Jane Rutledge Sharp



Lee Shepherd



Nancy Roberta Sheriff



Nancy Sibley



Cottie Slade



Suzanne Smith



Kaye Stapleton



Genie Stovall



Maxime Stubbs



Nell Tabor



Caroline Teague
Honor Roll, 1959-1960



Elizabeth Thomas

Sophomores



Mary Beth Thomas
Honor Roll, 1959-1960



Judith Thompson



Rosslyn Troth



Mary Troup



Cecilia Gordon Turnage



Sophomores inventory odd items in Lost and Found.



Margaret VanDeman



Edna Vass



Linda Wallace



Mary Ruth Walters



Louisa Walton

Sophomores



Beth Webb



Nancy Kate Wilkins



Ann G. Williams



Julianne Williams



Linda Wilson



TINA FINDS RELIEF FROM RAVAGES OF SHOPPING.



Susan Winbigler



Cheryl Winegar



Elizabeth Withers



Jane Womack



Mariane Wurst



Lucy Yang



Fontaine Yearley



Katherine Younger



Louise Zimmerman

Freshmen Enjoy Novelty, Variety



FRESHMAN CLASS OFFICERS: Margaret Moses, President; Boyd Bauer, Vice President; Gay Stebbins, Secretary-Treasurer.

The memory of the first quarter at Scott was a confused picture of strange, smiling faces, rush parties, and new friends. Christmas brought the thrill of the first trip home. The New Year meant reunion, the beginning of freshmen mixers; again the routine, and the work which freshmen had proved to themselves could be done. Spring followed ice, *King Lear*, and more exams. Temporary good-byes were said in June—end of a year to be green, to be gay, to be undecided.



Marsha Adams

Amy Alexander

Betty Alvis

Eve Anderson

Roddey Anderson

Freshmen

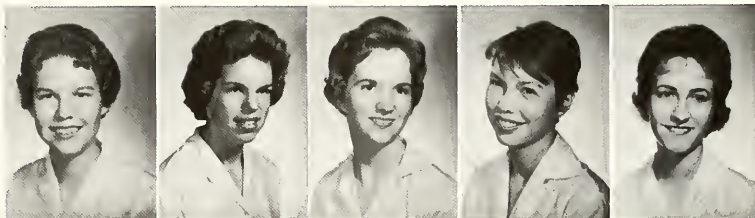
Glenda Antonie

Susan Elizabeth Aspinall

Ruth Backus

Lucia Bacot

Claudia Barbon



Nancy Barger

Boyd Bauer

Karen Baxter

Ginny Belcher

Mary Jo Beverly



Susan Blackmore

Ann Booton

Nancy Bradford

Brenda Brooks

Michele Ann Bullard



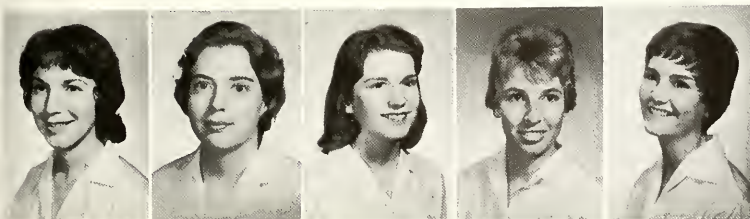
Linda Bulloch

Jo Lynne Campbell

Virginia Carithers

Peggy Ann Carr

Susan Michael Carr



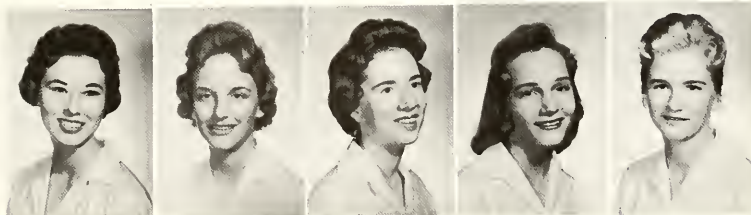
Clarissa Cartwright

Barbara Chambers

Carolyn Clarke

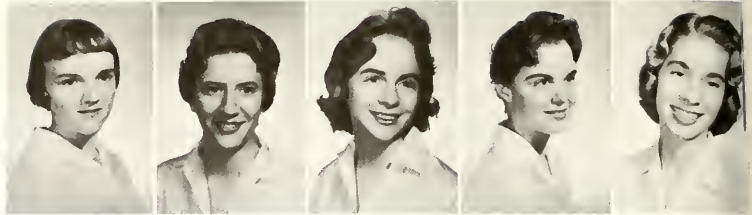
Judy Conner

Charlotte Connor

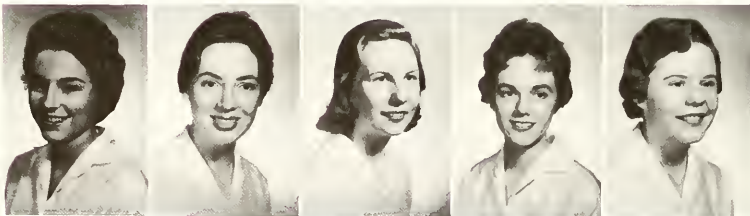


Freshmen

Carolyn Martin Craft
 Emmie Beth Crooks
 Ann Daniel
 Charlotte Dankworth
 Dale Davenport



Kennedy leaps ahead, girls
 hear from Hub TV upstairs.



Diane David
 Dianne Davidson
 Caroline Davis
 Joan Dickson
 Kathleen Dixon

Dianne Dobbins
 Barbara Duncan
 Lane Dustman
 Sara Ellen Ector
 Mary R. Edson



Freshmen

Sharon Edwards

Pamela Elliot

Judith E. Eltzroth

Barbara Entrekin

Sue Epps



Joan Fearon

Nora Field

Mary Bruce Ford

Ann Foster

Garnett Foster



Helen Foster

Carolyn Frazer

Jan Freeman

Emmelle Greer Gay

Karen Elizabeth Gerald



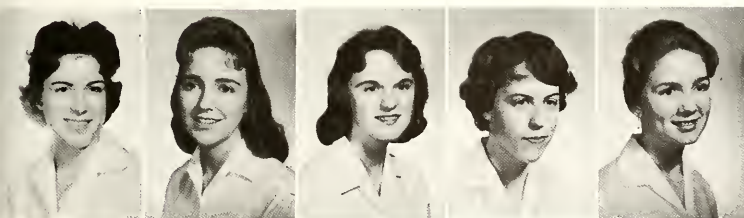
Betsy Gillespie

Linda Ann Griffin

Nina Griffin

Martha Griffith

Mariana F. Guion



Mae Hall

Catherine Hart

Laura Hawes

Betty Hemphill

Lucy Herbert



Freshmen

Judy Hillsman
Janet Hodge
Sarah Lou Hodges
Elizabeth Hood
Sharon Howes



Nancy Clarette Hunt
Dianne Hunter
Adelaide Hutto
Julia Ivey
Sally James



WE CAN ONLY WONDER WHAT ON EARTH HE'S SAYING.

Susan Keith-Lucas
Lila Ellen Kelly
Ann Kennedy
Harriet King
Martha Kissinger



Freshmen

Judith Knowles
 Mary Louise Laird
 Mell Laird
 Jan LaMaster
 Gatra Holleman Lampley



Lynda Langley
 Andrea Lanier
 Eleanor Lee
 Nancy Ellen Lee
 Shirley Lee

Patricia Gail LeGrande
 Muriel Lindsay
 Heather Logan
 Mary Lynch
 Martha MacNair



Frances Mahon
 Cammie Jane Mauldin
 Lynn May
 Juanita Caroline McCaless
 Bonnie Sue McClay

Helen Frances McClellan
 Jean McCurdy
 Ginger McCutchen
 Marilyn McDaniel
 Daryle McEachern



Freshmen

Joanna McElrath
 Susan McLeod
 Linda McMillan
 Annette Crawford Meginniss
 Carol Lynne Miller



Alive, indomitable spirit characterizes Class of '64!



Joy Miller
 Rebecca Miller
 Anne Minter
 Mary Mac Mitchell
 Susan Mitchell

Myra Morelock
 Toni Morrell
 Margaret Moses
 Kelly Mulherin
 Merrilln Myhand



Freshmen

Mary Carolyn Newton

Julia Norton

Laurie Oakes

Karen M. Olson

Polly Paine



Caryl Pearson

Ann Pennebaker

Andrea Pfaff

Nancy Miller Phillips

Mary Adair Pittman



Currie Prichard

Jessie Sue Prickett

Judith Nan Priesmeyer

Janet Radford

Tay Gibson Rawl



Margaret Reeder

Patricia Renfro

Elizabeth Jane Reynolds

Rebecca Reynolds

Marti Rice



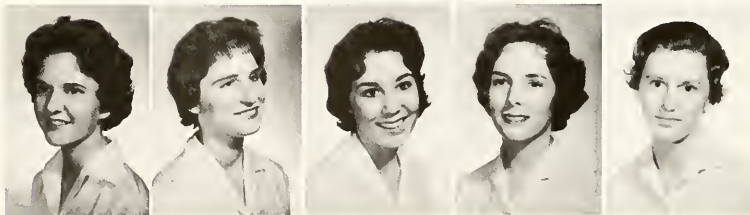
Marion Richards

Susan C. Richards

Pauline Richardson

Geneva Parks Ritchie

Carol Elaine Roberts



Freshmen

Mildred Scott Roberts
 Margaret Rodgers
 Elizabeth A. Rogers
 Karen Sue Selser
 Linda Lee Sharp



Sandra Shawen
 Catherine Shearer
 Lila Carter Sheffield
 Ann Howard Shield
 Nancy Cline Shuford



FRESHMEN AND SENIORS UNITE TO SING SCHOOL SONGS.

Patricia Sights
 Brenda Simonton
 Eve Smallwood
 Marian Smith
 Marion Smith



Freshmen

Nancy Jane Smith
 Molly Snead
 Sarah Snyder
 Betty Earle Speer
 Pam Stanley



Laura Lee Steakley
 Gay Stebbins
 Elizabeth Stewart
 Rosalyn Clare Street
 Catherine W. Strickland



Joh-Nana Sundy
 Margaret Tanner
 Sandra M. Tausig
 Betsy Temple
 Lynne Thagard



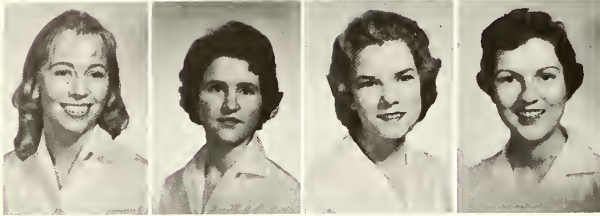
Sylvia Thorne
 Susan Tuthill
 Sara Tyler
 Rebecca Sue Vick
 Ellen Jane Waddle



Jane Wallace
 Janet Virginia Ware
 Ninalee Warren
 Nancy Michelle Wasell
 Mary Margaret Wearn



Freshmen



Mary Lynn Weekley

Hildegard Wells

Frances Welch

Suzanne Penn West

Suellen Wheless

Jeanne Shannon Whitaker

Barbara Ann White

Margaret Whitton

Leonora Irene Wicker



Florence Rhoda Willey

Christine Williams

Sally Williams

Mary Jo Winterle

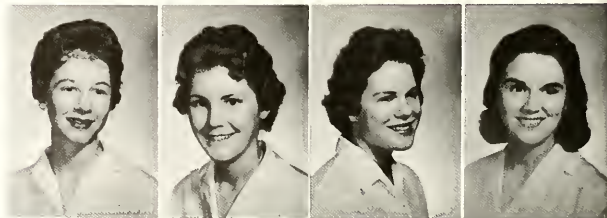
Mary Womack

Jane Wooddell

Maria B. Wornom

Anita Frances Yount

Ruth K. Zealy



Special Students



Eleanor Chiu



Hilda Herzog



Judy Maddox



Marijke Klein Wassink



Robin Patrick





ORGANIZATIONS

Serving to give perspective to campus life . . . extra-curricular activities . . . Student Government . . . a freedom through honor . . . Christian Association . . . to study, to refine, and to strengthen the campus commitment . . . Social Council . . . the importance of the well-rounded life . . . Athletic Association . . . teaching spirit and sportsmanship . . . Silhouette and News staffs . . . frantic work toward deadlines . . . song fests and organ techniques . . . synchronized swimming and contemporary dance . . . literary critics and creative writers . . . zealous debators . . . Mortar Board and Phi Beta Kappa . . . the highest compliments that can be paid.



Nucleus

A Silhouette of Organizations



Service

Scene unseen





EXEC.—FRONT ROW: A Thompson, C. Askew, J. Holloway, S. H. High, N. Moore, V. Allen, C. Goodwin. MIDDLE ROW: N. Rose, M. Lambeth, S. Aspinall, M. Fortson, C. Brown, B. Dalton, P. Moore, K. Gwaltney, M. Reeder. BACK ROW: B. Lockhart, B. A. Gatewood, A. McBride, M. Stokes, W. Barnwell, B. Gillespie, L. Rogers. NOT PICTURED: D. Burns, P. McGeachy.

Exec Is Each Student's Active Voice



Dot Porcher leads hall discussion in Sturgis for Honor Emphasis Week.

STUDENT GOVERNMENT OFFICERS: C. Askew, Student Treasurer; V. Allen, Student Recorder; N. Moore, Judicial Chairman; S. H. High, President; J. Holloway, Secretary.





REPRESENTATIVE COUNCIL—*Front Row:* A. Broad, J. Holloway, S. H. High, N. Moore, P. Walker, M. P. Cross. *Back Row:* E. Thomas, C. Goodwin, N. Batson, P. Smith, N. Stillman, M. Moses, C. Askew, A. Thompson, J. Byrd. *Not Pictured:* B. Bellune, N. Bond, D. Burns, M. W. Crymes, S. A. Rodwell.



The study atmosphere of the library prevails here, clouded only by smoke.

LOWER HOUSE—*Front Row:* M. Snead, F. Anderson, K. Robertson, A. Thompson, Chairman, S. Still, J. Duncan, P. Johnston, A. Foster, A. L. Sullivan. *Middle Row:* N. Tabor, A. Debele, P. Paine, M. Mitchell, B. Walker, A. McLeod, M. Klein Wassink, B. Jefferson, M. Smith. *Back Row:* M. L. Laird, J. Lancaster, M. Mossman, M. B. Thomas, B. Hood, N. Dickerson, C. Bryan, A. Beard. *Not Pictured:* S. Bryan, L. Cole, J. Griffin, A. Haire, E. Lee.





ATHLETIC ASSOCIATION BOARD—*Front Row:* I. Jones, D. Porcher, J. Heinz, A. Broad, P. Sylvester, A. Hutchinson, A. Peagler, N. Ghesling. *Back Row:* A. Thomas, J. Hawley, K. Younger, M. B. Thomas, J. McCurdy, J. Norton, D. Laird, S. Kelso, J. Welch, N. Hall. *Not Pictured:* L. Jones.



WEARERS OF THE LETTER—*Seated:* N. Barr, P. Walker, B. Dalton. *Standing:* A. Broad, S. Kelso, K. Chambers, A. Peagler, P. Sylvester. *Not Pictured:* N. Hall.



ATHLETIC ASSOCIATION OFFICERS—P. Sylvester, Vice President; J. Heinz, Treasurer; A. Broad, President; A. Hutchinson, Secretary.

Freshmen board the bus for an Atlanta' tour, the modern Greyhound-AA way.



A. A. Promotes Sports Participation

"Every student participating in some athletic activity," expressed the goal set by this year's Athletic Association. Hockey season ignited the spark. Basketball collected all those interested to play for fun in inter-dorm and inter-class games. Archery meets and single and double tournaments maintained keen individual competition throughout the year. Improvements in the Cabin and the new, more stylish type of blazers showed A.A.'s desire to instill spirit in each student.

"WHY SHOULD I TRIP HER? SHE'S ON MY TEAM."



WINTER QUARTER BRINGS RETREATS AT THE CABIN.



SOCIAL COUNCIL—Seated: E. Middlebrooks, M. W. Crymes, J. Henry, D. Davidson, A. Modlin, V. Allen. Standing: E. Withers, M. McDaniel, L. Davis, L. Smith, P. Holmes, B. Bruce, M. McCravey. Not pictured: J. Heard, E. Sayers.

Social Council Evokes New Attitudes



PROFESSIONALS SHOW THE VERY LATEST STYLES.

"Hair rolled up in the dining hall!" horrified Social Council members often shrieked. More than a date bureau, this board sought improvement of campus morale. Committees were in charge of the Hub, Saturday night movies, Fall Frolics, and the freshman dance. Council members worked during summer months to orient freshmen to campus social policies. Social Emphasis Week with fashion show, hair styling highlighted the year's work.

HUB COMMITTEE: J. Henry, L. Davis, L. Smith.





CURLERS AT DINNER ARE A WEEKEND NIGHT TREAT.

CHARMING WOMAN WEEK INCLUDES HAIR STYLING.



SOCIAL COUNCIL OFFICERS: E. Middlebrooks, Treasurer; A. Modlin, Vice President; M. W. Crymes, President; J. Heard, Secretary.

Beth chats during intermission at one Saturday night Social Council movie.



C.A. Instills Added World Awareness



AA HAS THE DEVIL TO PAY IN CA BASKETBALL GAME.

"We, the members of the Christian Association . . . will strive . . . to understand the will of God for our lives through worship, study, and action." This pledge, taken by each C.A. member, provided the stimulus for Religious Emphasis Week, Holy Week, and World Awareness Week. C.A. does not limit itself to the word "week." By promoting service projects, Tuesday chapels, Vespers, and hall prayers, the cabinet helped relate the theme "Christ in You" to personal commitment throughout the year.

DISPLAY HELPS FOCUS INTEREST ON THE CONGO.



CHRISTIAN ASSOCIATION CABINET—*Seated:* G. Green, S. Heinrich, L. Denton, B. Vick, L. Morcock, L. Lentz. *Standing:* B. Schenck, N. Heath, N. Batson, S. Abernathy, C. Bowen, N. Marable, P. Flythe, M. J. Beverly. *Not pictured:* J. Medearis.





C. A. SERVICE COUNCIL—SEATED: B. Fuller, L. Yang, A. Pollard, S. Abernathy, M. A. Lusk, M. Greene, A. Modlin. STANDING: S. Johnson, P. Page, M. Ware, N. Duvall, E. Harrison, M. VanDeman, M. L. Hunt. NOT PICTURED: E. Sayers.

CHRISTIAN ASSOCIATION OFFICERS—SEATED: S. Abernathy, Vice President; N. Batson, President. STANDING: C. Bowen, Secretary; J. Medearis, Treasurer.



INTER-FAITH COUNCIL—FRONT ROW: S. Creech, A. Bagiatis, M. Mossman, D. Poliakoff, S. Cumming. BACK ROW: A. Pollard, P. Davis, J. Williams, S. Heinrich, K. White, K. Gilliland. NOT PICTURED: D. Brown, P. Wilson.



C. A. BANQUET THEME IS "SNOW WHITE."





Page Smith, Editor.



M. Bullock, Managing Editor; B. S. Wyatt, Business Manager.

Silhouette Works Late to Depict Scott

Lights burning in the Hub after closing hours were a frequent sight as the *Silhouette* staff strove to catch the experiences that make up a year. Taking photographs, writing copy, drawing layouts, selling ads—all staffs met deadlines, somehow. The yearbook had a challenging history to match, with the 1959 book's All-American rating and last year's first-class honor rating. In the finished book, the people, the buildings, the events combine in a silhouette of 1960-1961.

LAYOUT STAFF—FRONT ROW: A. Risher, J. A. Hoit, A. Williams, F. Bailey, F. Anderson, G. Lemmond, L. Gilbert. MIDDLE ROW: E. Pancake, E. Oglesby, C. J. Buchanan, I. Lavinder, H. Everett, P. Holmes, N. Glass. BACK ROW: C. Turnage, P. Lowe, A. Modlin, N. Gheesling, B. Hutcheson, J. Henry. NOT PICTURED: A. Smith, S. Pruitt.





S. Boineau, Art Editor; N. Barr, Photography Editor; S. Alexander, Classes Editor; P. Luther, Ad Manager.



BUSINESS STAFF—SEATED: B. S. Wyatt, D. Foster, H. Higgins. STANDING: C. Bryant, L. Wilson, L. Smith. NOT PICTURED: P. Luther.



B. Mordecai, Academics Editor; S. Grey, Features Editor; N. Nelms, Sports Editor.



MAKE-UP IS APPLIED ON ANNE FOR CLASS PICTURE.

EDITORS PLAN 1961 *SILHOUETTE* ON FALL RETREAT.



K. Gilliland, Production Editor; K. Kemp, Copy Editor; F. Winn, Organizations Editor.





AGNES SCOTT NEWS STAFF—Front row: C. S. Jackson, N. Barrett, S. Mustoe, M. J. Moore, E. Thomas, L. Schow, M. T. Lipscomb, V. Philip. Middle row: E. Pancake, H. Everett, N. Sibley, H. Smith, E. Middlebrooks, M. Love, L. Shepherd, N. Sheriff, F. Anderson, L. Lentz, A. Risher. Back row: K. Robertson, L. Lambert, I. Jones, J. Little, S. Smith, N. Barr, C. Turnage, R. Troth, E. Thomas.

News Stimulates Campus Evaluation



Esther Thomas, Editor.

Newspaper staff workers draw a sigh of relief on Wednesday afternoons when they spot copies of the *ASC News* reposing in every campus mailbox. However, there is no rest for the weary. An endless cycle of spotting news, writing interesting articles, searching for ads, proof-reading copy, typing, and meeting deadlines characterizes the work. Harried editors gather in the Hub, while the staff checks leads and reports results in newspapers embodying true journalistic spirit.

EDITORS: C. S. Jackson, assistant editor; S. Mustoe, assignment manager; N. Barrett, assistant editor; M. T. Lipscomb, copy editor. Not pictured: L. Schow, assistant editor.



Carroll Connor, Business Manager;
Mary Jane Moore, Managing Editor.

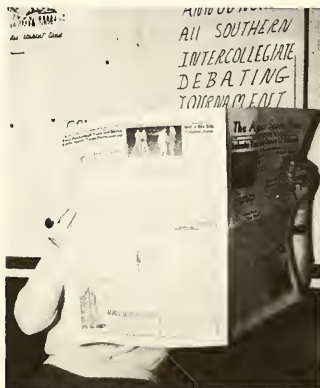


LINDA INGRAM GETS AD AT CORSAT'S RECORD SHOP.



MARY JANE DISCUSSES COPY WITH THE PRINTER.

MANY HOURS OF HARD WORK SEPARATE INITIAL PHOTOGRAPHING FROM NEWS STUDENTS RECEIVE EACH WEEK.





Nancy Batson



Anne Broad

Mortar Board Links Students, Faculty

A host of jobs behind the scenes make up the work of Mortar Board. Besides conducting all campus elections, members this year held a mock presidential election, revealing the students' Republican sentiments and the faculty Democratic loyalty. Mortar Board serves as a liaison between the administration and student body. A leadership training retreat, evaluations, and Saturday chapel contribute to campus life as Mortar Board exemplifies Service, Leadership, and Scholarship.



Cornelia Brown, Treasurer



Joan Byrd, Secretary



Mary Wayne Crymes



Nina Marable



Ann McBride



Pamela Sylvester, Vice President



Patricia Walker, President

TV DEBATES, SPEAKERS FOR KENNEDY, NIXON HELPED STUDENTS CAST EDUCATED VOTES IN MOCK ELECTION.



Faculty, Students Prepare for Lectures

"Will you usher this evening? Can you arrange flowers?" Many questions as diverse as these may be directed toward other students by student and faculty members of Lecture Committee, whose job is to see that the visit of a campus lecturer is pleasant and profitable both for the lecturer and his audience. Dr. Doerp, Mrs. Young, Dean Kline, Miss Allen, and student representatives work under the leadership of Miss Boney and Mary Park. Lectures seem short to those who plan details for weeks.



M. P. Cross, Chairman; M. Love, Vice Chairman; Miss Boney, Faculty Chairman; M. A. Shugart, Treasurer.



LECTURE COMMITTEE—FRONT ROW: M. Shugart, M. P. Cross, M. Love. BACK ROW: K. Kemp, P. Flythe, M. McKinnon.



AURORA STAFF—Front row: M. Van Demon, N. Batson, A. Coffin. Back row: S. Pruitt, D. Sanders, K. Gilliland, N. Glass. Not pictured: A. Ashford, B. Baldauf, C. Bryan, W. B. Childress, S. Davis, S. Favor, N. Gheesling, B. Hopkins, N. Hughes, S. Still, L. G. Teasley, M. Ware, F. Winn, M. Wurst, S. Kelso, B. Pancake, B. Paterson.

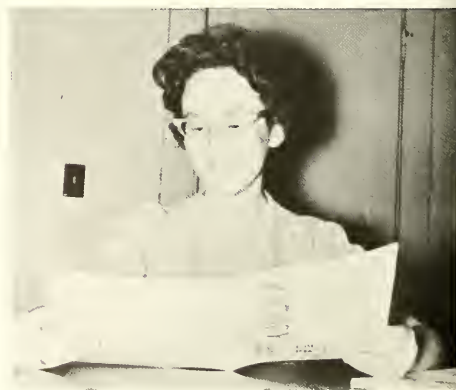


EDITORS: P. Rogers, business manager; M. Schwab, literary editor; M. Lear, art editor.

Aurora Encourages Creative Expression

A more intense *Aurora* appeared this year under the editorship of Joan Byrd. Woodcuts, line drawings, and photographs dramatized pages of print in the campus arts magazine. The literary staff sifted manuscripts in the attempt to find and publish the best student expression, elusive poetry or haunting stories. Book reviews represented the critical viewpoint. Flannery O'Conner and John Ciardi appraised the work of *Aurora's* special Arts Festival edition in the spring quarter.

Joan Byrd, Editor.



BOZ Channels

Literary Creativity

The ears of BOZ members become attentive at the mere mention of the word "creative." Personal ability to create and the art of appreciating the creative writing of others are the goals of BOZ writers, selected by try-outs from the sophomore, junior, and senior classes. In regular monthly meetings this group reads, discusses, and analyzes short stories, plays, poems, essays, and other writings contributed by various members. Often members submit their works to *Aurora*.



BOZ MEMBERS: FRONT ROW—C. Hind, J. Heinz. BACK ROW—J. Byrd, B. Stevens, B. Crawford, President. NOT PICTURED—M. Schwab, S. Still.



LITERARY ENDEAVORS DEMAND POLISHING.

Frosh Writers Share Ideas Through Folio

A pleasant change from writing critical papers is offered to freshmen by Folio. This exclusively freshman club, serving as a little sister group for BOZ, encourages creative writing among its members. Through the exchange of ideas afforded by monthly meetings, each writer may develop her own literary style and benefit from constructive criticism of others. Folio's worth is well demonstrated by its annually published magazine, which contains creative efforts of club members.

FOLIO MEMBERS: FRONT ROW—S. Edwards, N. Bradford, President; M. Womack. BACK ROW—R. Zealy, N. Smith, S. Hodges, M. Moses.



Innovation Marks Blackfriars' Year

Blackfriars offers stage-struck Scotties opportunity unlimited to appear before the big lights, to taste the excitement of actual play production, and to work with costumes, make-up, sound, and lights. This year three history-making precedents were established. The club became completely self-supporting; it collaborated with Drama Tech, producing Wilder's "The Skin of Our Teeth" at ASC and Theatre Atlanta; and it presented the premiere of alumna Pat Hale's play, "Uncle Sam's Cabin."



OFFICERS—*Front:* R. Shepherd, Treasurer. *Back:* A. L. Sullivan, Secretary; M. Fortson, Stage Manager; A. Boykin, President; D. Foster, Vice President.



EXECUTIVE STAFF—*Front row:* L. Lentz, H. Linton, G. Lemmond, M. J. Moore, C. Goodwin. *Back row:* V. Johnson, C. Bowen, J. A. Smith.

BLACKFRIARS—*Front row:* M. McCravey, J. Hunter, J. Williams, S. Elam, M. Hanna, P. Smith, M. J. Moore, E. McLain. *Middle row:* M. Dotson, B. S. Wyatt, M. Kinard, S. Kipka, B. Faucette, A. Wood, D. Laird, V. Johnson, A. Ashford. *Back row:* J. A. Smith, S. Cumming, J. Patterson, H. Linton, C. Turnage, C. Goodwin, W. B. Childress. *Not pictured:* S. Addington, B. Baldauf, B. Bellune, C. Bowen, C. Hind, G. Lemmond, L. Lentz, T. Moye, N. Pendleton, M. Roberts, A. Womeldorf.





BACKSTAGE AT THEATRE ATLANTA, MISS GREEN, MARION PREPARE FOR BLACKFRIARS-DRAMATECH PLAY.

PHOBIA OF HEIGHTS IS UNDRAMATIC.

CAREY, JANE VIVIDLY INTERPRET SCHIZOPHRENIA.



Glee Club Performs In Chapel, Concerts

On Monday and Thursday afternoons, come rain or shine, sopranos, altos, and contraltos wend their way to the basement of Presser for an hour date with numerous and varied musical scores. The Christmas Concert, special anthems throughout the year, responses in convocation, appearances in several local churches, and the Spring Concert with the Georgia Tech Glee Club were some of the highlighting results of the Glee Club members' weekly practices.



OFFICERS: S. Hanson, Librarian; B. Lockhart, Publicity Chairman; D. Bray, Secretary; N. Barr, President; E. Pancake, Secretary; H. Linton, Vice President; E. Vass, Publicity Chairman; H. Gregg, Treasurer; M. Ware, Librarian.

MEMBERS: P. Bruening, Accompanist; Miss Hagopian, Director. FRONT ROW—S. James, H. Linton, R. Anderson, M. Rice, M. Kissinger, F. Willey, M. Womack, D. Davidson, S. Hanson, H. Gregg, J. Radford, N. Barr. SECOND ROW—M. J. Clark, M. Smith, B. Lockhart, J. Hodge, S. Richards, M. Campbell, A. Pollard, J. McCannless, K. Olson, D. Sanders, M. Ware. THIRD ROW—M. Goion, J. C. Ayres, C. Harris, N. Wheless, S. West, E. Stewart, P. Craig, P. Rogers, E. Vass. BACK ROW—D. McMillan, T. Jenkins, G. McCutchen, A. Smith, M. St. Clair, P. Page, C. Hickey, J. Sharpe, M. Bullard.





SIGMA ALPHA IOTA—SEATED: S. Pruitt, Vice President; A. Smith, President. STANDING: S. Hanson, J. Medearis, H. Linton, Chaplain; N. Fulcher, Corresponding Secretary; S. H. High, M. M. Andrew, K. Stapleton, J. Brandeis, Recording Secretary. NOT PICTURED: D. Bray, R. Fowler, Treasurer; E. Stovall.

Sigma Alpha Iota Honors Musicianship

Breakfast in bed, a luxury enjoyed by many Scotties this year, was a service of Sigma Alpha Iota. Music majors played waitress as part of a money-making project. More normal activities were musicales presented at bi-monthly meetings in Miss Hagopian's studio, study of a critic's view of music, and a program of Easter music presented by Miss Bayer. Members also enjoyed serving as hostesses for the state meeting of Sigma Alpha Iota, which was held at Agnes Scott.

Organ Guild Broadens The Musician's Field

Sounds of music can be heard in the vicinity of Gaines Chapel every Friday as members of Organ Guild study the problems of the organist. This year's club has concentrated on different kinds of stops and how and when to use them. Under the guidance of Miss Bayer, members have learned much about great organ music, and programs have often been sessions of listening to records. The big moment for any member arrives when she participates in one of the public recitals held in Gaines.

ORGAN GUILD—SEATED: C. Turnage, A. McBride, S. Pruitt, Secretary; M. Dickert, President; A. Smith, Treasurer; D. Davidson, C. Robinson. STANDING: P. Davis, E. Middlebrooks, J. Brandeis, J. Medearis, M. M. Andrew, C. Buchanan, C. Roberts, P. Bruening, F. Gaines, Miss Bayer, Advisor.



ETA SIGMA PHI—FRONT ROW:
E. Vass, M. McKinnon, F. Yearley,
P. Bevier. BACK ROW: C. Craig,
President; N. Heath, T. Moye, Vice
President; J. Kelley, Secretary; P.
Smith, Treasurer.



Eta Sigma Phi Reads Classical Tragedy

It is not at all unusual for a member of Eta Sigma Phi to find a note in her mailbox with simply a word such as *Hippolytus* written on it. Every year this honorary classics fraternity studies a subject concerning our classical heritage. This year's topic was Classical Greek Drama. Bimonthly meetings held at the homes of Mrs. Young, Miss Zenn, or Miss Glick were led each time by a different member. Examination of a new play per meeting sparked interest.

Chi Beta Phi Honors Scientific Eminency

Glass blowing can be a fine art. This was proven by the glass blowing demonstration presented by Dr. William H. Jones from Emory University under the sponsorship of Chi Beta Phi. The organization is an honorary fraternity for biology, chemistry, physics, math, and psychology majors. Its purpose is to promote interest in all areas of scientific development. A key is awarded annually to the most outstanding member of Chi Beta Phi at a special convocation in May.

CHI BETA PHI—FRONT ROW: V. Philip, Publicity Chairman; C. Thomas, Secretary; N. Marable, President; J. Henderson, Vice President; C. Robinson, Treasurer. BACK ROW: B. Kenton, S. Grey, P. Smith, N. Johnson, M. Bullock, M. J. Clark, M. Campbell.



Problems of World Are Probed in IRC

With a dual aim of understanding and factual information, International Relations Club extends horizons out beyond Agnes Scott. As political crises and upheavals around the world drew attention this year, IRC programs focused on the rapid changes in Latin America and the East. Israel's Vice-Consul provided expert explanations of the background and present situation of his country. Cuban students' discussions and Mr. Tumblin's Brazilian slides pinpointed areas near home.

IRC MEMBERS: FRONT ROW—N. Heath, P. Williams, H. Manley, Secretary-Treasurer. MIDDLE ROW—C. Conner, D. Brock, B. Pancake, E. Hill, President; A. Newsome. BACK ROW—Dr. Cornelius, Advisor; G. Lemmond, J. Roden, J. Brennen, J. Juarez. NOT PICTURED—K. Kemp, Vice President; L. Zimmerman.



Pi Alpha Phi Gains Poise With Practice

Devotion to the perfection of debating techniques is the chief goal of Pi Alpha Phi, the college debating organization. Members practice with both humorous and the more serious topics in order to gain poise when speaking under any condition. Each year in January Pi Alpha Phi is hostess to the All Southern Intercollegiate Debating Tournament. This year's topic for debate was Resolved: The United States Should Adopt a Policy of Compulsory Health Insurance.



DEBATERS HEAD TO THE AZALEA TOURNEY IN MOBILE.



PI ALPHA PHI: SEATED—R. Kittrell, H. Glover, L. Schow, D. Sanders, Treasurer; A. Coffin, Secretary. STANDING — D. Brown, A. Risher, M. Boswell, Dr. Hayes, Advisor; J. Little, L. Mueller, L. Horn. NOT PICTURED—S. Atkins, C. Brown, F. Chao, E. Harrison, B. Hendee, E. Hines, President; J. Kelly, E. Thomas.



SPANISH CLUB—SEATED: A. Ashford, Secretary; A. Thomas, President; P. Bevier, Vice President; L. Smith, Treasurer. STANDING: C. Turnage, B. J. Harper, L. Zimmerman. NOT PICTURED: A. M. Aviles, B. Craig, P. Craig, M. A. Gregory, H. Herzog, S. A. Kelly, B. Kneale, D. Laird, B. Rau, F. Winn, K. Younger.

Le Cercle Francais Examines Culture

Meetings of Le Cercle Francais provide excellent practice for those *qui parle francais*. Membership is open to any student who takes a French literature course. Varied programs presented at the homes of Miss Pythian or Miss Clark keep the attendance record high. This year's club especially enjoyed hearing about several members' experiences in France last summer, listening to a lecture on French Art by Miss Huper, and attending a Vieux Columbier presentation of *Ecole Des Femmes*.

Scott Club Meets Spanish Atlantans

Spanish Club members enlarged their knowledge of the language while learning more about Spanish-speaking countries and people. On nights when the organization met, South Americans who are residents of Atlanta or students at Georgia Tech arrived on the Agnes Scott campus. A new and exotic atmosphere blended with the magnolia trees, and a different kind of "southern accent" with the conversation. Special speakers during the year included former Cuban citizens.



SPANISH CAROLERS SING AT CHRISTMAS PARTY.

FRENCH CLUB—SEATED: V. Allen, B. Boatwright, P. Bevier, President; L. Lambert, Secretary-Treasurer; J. Nabors. STANDING: F. Winn, S. Mustoe, N. Moore, A. Wood, C. Harris, M. Lambeth, P. Conrad, L. Callaway, F. Willey. NOT PICTURED: B. Bellune, M. H. Curd, L. Denton, A. Frazer, P. Frederick, A. Haire, J. Hancock, J. Hunter, L. Ingram, B. Lockhart, J. Thompson, M. Ware, L. Zimmerman, Vice President.





DANCE GROUP—FRONT ROW: B. Fuller, J. Jarrell, M. Dotson, A. Broad, Chairman; J. Cooper, N. Duvall, B. Bauer. BACK ROW: P. Frederick, B. Hughston, A. Schepman, W. B. Childress, A. Pfaff, M. Campbell, C. Shearer, C. Pearson, Mrs. Campbell, Advisor.

Dancers Express Contemporary Art

As modern as its name implies, the Agnes Scott Contemporary Dance Groups has enjoyed many new experiences this year. Members attended concerts given by Jose Limon and Merce Cunningham. Rigorous technique kept dancers busy as Anne Broad and Mrs. Campbell, fresh from a summer course under Martha Graham, helped the group perfect Graham technique. Dance Group participated in the Fine Arts Festival by choreographing and presenting Yeat's *The Only Jealousy of Emer*.

Applications of Psychology are Explored

At Christmas time, members of the Psychology Club contributed to a project to give Milledgeville patients holiday gifts. All psychology majors and some interested non-majors participated in activities to stimulate interest in their subject. Special speakers during the year included an industrial psychologist from the Atlanta Lockheed plant. He indicated the opportunities available for psychology graduates in the fields of business and human relations.

PSYCHOLOGY CLUB—FRONT ROW: P. Page, Secretary; J. Juarez, President; J. Seay, Vice President; E. Sayers, Treasurer. BACK ROW: J. Jarrell, B. Fuller, P. Rogers, J. Duncan, J. Townsend, B. Mordecai, K. Chambers, J. Claridy, W. B. Childress. NOT PICTURED: D. Foster, G. Green, B. Hopkins, P. Lutber, G. Marks, J. Medearis, K. White.



Dolphin Club Gives Alice in Wonderland

Fun, wet splashes, and hard work are combined to make Dolphin Club one of the most active organizations on campus. Members are chosen on a basis of individual skill. Many hours of hard work result in the production of the annual water pageant. Presented during winter quarter, this year's performance was *Alice in Wonderland*. Besides this activity, Dolphin Club sponsors the Seal Club for freshmen, and members often give swimming lessons to the underprivileged



DOLPHIN CLUB OFFICERS: Sissy Baumgardner, Vice President; Kacky Chambers, President; Sue Grey, Secretary-Treasurer.



KACKY IS SMILING QUEEN OF HEARTS.

DOLPHIN CLUB MEMBERS—FRONT ROW: J. Roden, B. Burgess, P. Flythe. SECOND ROW: J. Little, B. Hendee, E. Hodgson, L. Gearreald. THIRD ROW: G. Ellis, S. Grey, T. Moye, B. Hatfield, K. Haralson. BACK ROW: K. Chambers, K. Ogburn, H. Herzog, M. M. Andrews, D. Bray, V. McLanahan, A. Frazer.



Fourteen Receive Phi Beta Kappa Honors

A symbol of the highest academic achievement, Phi Beta Kappa membership came to fourteen seniors in a special convocation program, which began with a formal academic procession by faculty in the Beta of Georgia chapter. After Dean C. Benton Kline's address on the passionate relationship of a scholar to learning, the reading of the names of those elected to the local chapter brought a rising ovation from the rest of the student body in honor of the fourteen.



Nancy Batson



Judith Brandeis



Anne Broad



Margaret Bullock



Jane Henderson



Patricia Holmes



Marian Jenkins



Juanita Juarez



Mildred Love



Virginia Philip



Joyce Seay



Page Smith



Caroline Thomas



Lafon Zimmermann



SPORTS

The development of physical well-being through various sports . . . the tension of a hockey game . . . pep rallies in the Hub and quadrangle . . . enduring a hot gym to cheer the classes in the swimming meet . . . basketball season . . . rebound, whistle, foul . . . badminton and volleyball . . . the delicate art of fencing, somewhat distorted by the novice . . . sun glasses and crowded tennis courts . . . the hockey field converted to an archery range . . . horseback riding . . . three feet never seemed so high before . . . points for the A.A. letter . . . when the scores are forgotten a spirit remains . . .

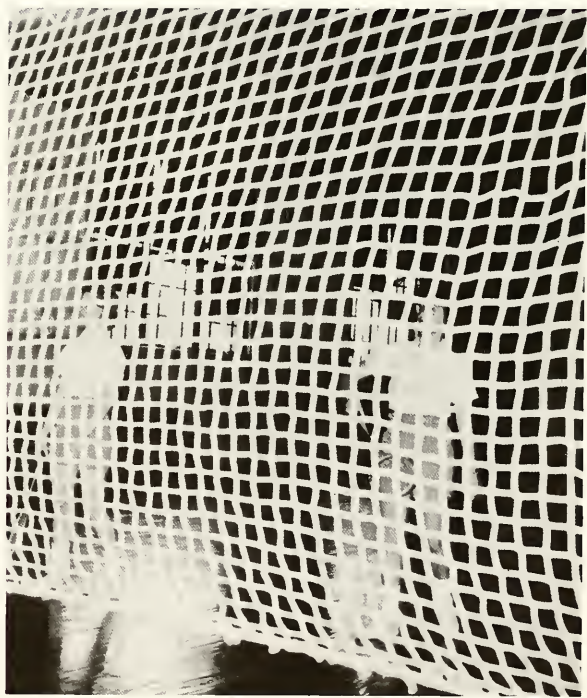


A Silhouette of Sports



Cooperation

Control



Snare



FRESHMEN SING TO PIANO RHYTHM IN HUB.



SHOWER, THE PRICE FOR GETTING PINNED, AWAITS JUDY.



Scotties enjoy bridge game anywhere, even on a train.



MANY SHARE THE THRILL BELONGING TO ONE, ESPECIALLY ON A NIGHT WHEN KA SERENADES.

Indefinable Memories Create Spirit

In the fall, familiar music comes from the steps of the dining hall as freshmen sing tentatively, upper-classmen with nostalgia. Holidays come and go, celebrated at school, then at home. Bedlam fills the Hub. In the library, giggles mingle with rustling pages, and typewriter keys click in study rooms. Birthday parties in a dorm may be interrupted to crowd around the window and peak out at the serenading fraternity. Red roses and a sudden shower surprise the newly pinned.

EVEN COKES CAN PRODUCE HIGH SPIRITS.



IT'S EASIER TO FIND A WET SMILE THAN A WET APPLE.



Each player's face reflects the excitement of a new emergency.



EMILY, YOGI, AND ETHEL CHEER ON JUNIORS.



ANNE, SARAH, AND KAY RUSH TO THE DEFENSE.



The juniors lead the "tired old Seniors" in a cheer for Eloise.



CLASS CHEERLEADERS—SOPHOMORES: L. Callaway, P. Lowe. JUNIORS: E. Gilmour, E. Evans. SENIORS: A. Peagler, A. Frazer. FRESHMEN: J. Hodge, P. Carr.

Senior's Emerge Victorious in Hockey

Yogi Bear alias Lyn Horn, short-skirted freshmen, shouting sophomores, red-bloomered juniors, and miniature Eloises kept spirit high during hockey season this year. Many seniors playing for the first time supported experienced classmates to produce an undefeated senior team. Two additional games added interest to the season. The freshman team defeated Westminster School for Girls, and seniors were victors in their battle against coaches and alumnae.



SPORTSMANSHIP CUP PASSES INTO SENIOR HANDS.



Sophomore goalie lunges in desperate attempt to block Paula's hard drive.

SENIOR TEAM—N. Hall, K. Gwaltney, A. Broad, P. Sylvester, B. Dalton, N. Barr, A. Boykin, S. Kelso, N. Stone, M. Cross, T. Walker, N. Batson, P. Wilson. **NOT PICTURED:** D. Burns, M. Lipscomb, C. Goodwin.



JUNIOR TEAM—**FRONT ROW:** S. Pruitt, L. Schow, M. Boswell, M. Klein Wassink, B. Kneale, A. Thomas, D. Porcher. **BACK ROW:** K. Gilliland, H. Glover, L. Sweitzer, A. Wood, S. Alexander, C. Bowen, P. Mitchell. **NOT PICTURED:** S. Grey.



SOPHOMORE TEAM—**FRONT ROW:** A. Hardesty, I. Jones, L. Jones, B. Webb, B. Faucette. **BACK ROW:** K. Younger, B. Bruce, N. Sheriff, A. Freeman, F. Anderson, A. Debele, K. Mobley. **NOT PICTURED:** D. Brown, P. Conrad, N. Rose, B. Schenck.

FRESHMAN TEAM—**FRONT ROW:** B. Vick, B. Hood, M. Wornom, S. Thorne, J. Whitaker, J. Wallace. **BACK ROW:** M. Laird, T. Priesmeyer, P. Renfro, L. Bacot, S. Aspinall, M. Bullard, B. Speer, N. Warren. **NOT PICTURED:** L. Bulloch, J. Conner, M. Guion, E. Lee, J. McCurdy, J. Norton, K. Selser, M. Sneed, H. Wells.



Scoreboard

October 14			
Seniors	1	Sophomores	1
Juniors	1	Freshmen	1
October 21			
Juniors	0	Seniors	2
Freshmen	0	Sophomores	0
October 28			
Seniors	4	Juniors	4
Freshmen	0	Sophomores	0
November 4			
Seniors	2	Sophomores	0
Juniors	1	Freshmen	0
November 11			
Juniors	3	Seniors	2
Freshmen	2	Sophomores	0
November 18			
Seniors	2	Juniors	3
Freshmen	2	Sophomores	1
November 30			
Seniors	2		
Alumnae and Coaches	0		
December 2			
Freshmen			5
Westminster School for Girls			0



HOCKEY VARSITY: M. Snead, E. Dalton, P. Walker, K. Mobley, M. Klein Wassink, C. Askew.

1960 Hockey Varsity Totals Fourteen

The large number chosen to hockey varsity indicated the quality and quantity of players during the season. Hardly a player could get the ball through freshman Molly Snead playing fullback. Senior Stone and sophomore Freeman stopped most onslaughts at their goals. Junior Klein Wassink provided new talent for the rough forward line. Betsy Dalton gave the senior team a large measure of its victory, as she led the team to the top for the third year.



HOCKEY VARSITY
GOALIES: N. Stone,
A. Freeman.

HOCKEY VARSITY: P. Wilson, B. Webb, M. Boswell, N. Hall, N. Barr.





IN THIS ONE MOMENT, THE CROWD IS QUIET.



SWIMMERS AND CROWD TENSE AS EACH RACE BEGINS.

Juniors Capture Swim Crown for Third Time

Climaxing concentrated practice, class swimmers splashed down the pool on November 8. Twice victorious, the Junior class again captured first place, followed by Freshmen in second. Shouts resounding from the walls rallied on the contestants. The swimmers exhibited tremendous speed in relays and graceful style in form events. Anne Broad again demonstrated her precision in diving by winning her third first place.

THE MYSTERY IS: WHICH DIRECTION THE SWIMMERS ARE GOING.



"I HAVE TO SWIM FREESTYLE . . . NOW?"





BIBA BRAVELY MOVES TO RECOVER THE BALL.



SUBSTITUTES, SPECTATORS, COACH GUARD THE SIDES.

Class, Dorm Teams Enliven Basketball

Together class and dorm basketball teams encouraged campus-wide spirit this winter. The dorm games were instigated in order to allow participation by girls who would hesitate to demonstrate their abilities or lack of them on behalf of their class. "Walterites" took first place in the dorm competition. Allegiance soon changed from dorm to class, however, as the season of class competition began. In spite of the abilities of the upper-classmen, the freshmen won first place.

A JUMP BALL GIVES A CONTEST OF AGILITY.



"HIT IT AGAIN, MEADE! HIT IT AGAIN!"

FRESHMAN TEAM—FRONT ROW: M. Mitchell, G. McCutchen, C. Maudlin, B. Hood. BACK ROW: S. Thorne, G. Ritchie, J. Whitaker, K. Strickland, M. Billard. NOT PICTURED: H. Wells, P. Renfro, M. Guion, J. Conner, L. Steakley.



JUNIOR TEAM: M. Boswell, J. Claridy, L. Horn, V. Conner, E. Evans, B. Hendee. NOT PICTURED: H. Glover, S. Pruitt.



SOPHOMORE TEAM—FRONT ROW: M. Kirby, A. Hardesty, R. Craig. BACK ROW: N. Duvall, M. Thomas, K. Stapleton, W. Barnwell, J. Sharp. NOT PICTURED: N. Abernethy, L. Jones, D. Laird, B. Gatewood, D. Withers.

Scoreboard

February 10			
Freshmen	38	Seniors—by default	
Sophomores	28	from Juniors	
February 17			
Sophomores	39	Freshmen	38
Juniors	24	Seniors	18
February 24			
Sophomores	57	Freshmen—by default	
Seniors	43	from Juniors	

SENIOR TEAM: C. Brown, K. Gwaltney, N. Moore, P. Sylvester, A. Frazer, A. Christensen, A. Peagler. NOT PICTURED: B. Dalton, N. Stone, N. Barr.





Nancy Abernethy, sophomore; Mary Beth Thomas, sophomore.



Pam Sylvester, senior; Kaye Stapleton, sophomore.

Varsity Basketball Honors Ten Players

Climaxing this year's inter-dorm and inter-class basketball season was the naming of the varsity players. Ann Peagler, Betsy Dalton, Emily Ann Evans, Nancy Abernethy, and Kaye Stapleton, five members of this year's varsity, were also honored in 1960. Considering each player's performance and participation in the winter inter-class basketball schedule, a committee composed of Athletic Association representatives and the team managers selected girls for varsity honors.



Ann Peagler, senior; Emily Ann Evans, junior.

Betsy Dalton, senior; Vivian Conner, junior.



Cammie Jane Mauldin, freshman; Mary Mac Mitchell, freshman.



"On Guard," gym echoes during fencing classes



SALUTE MARKS MATCH'S BEGINNING.

Awkward Grow Agile In Fencing Classes

"Attention . . . salute . . . en garde . . . lunge . . . thrust . . . touch . . . halt!" shouts Miss Manuel to her fencing students. This delicate art has become one of the favorite indoor sports at Agnes Scott. Inept students laugh together during the first few classes, when agility is lacking, graceful movements are unheard of, and "touches" are few. But soon the precision and coordination begin to come naturally. Inter-class matches are then held, preparing fencers for a city-wide exhibition.

LUNGING FENCER CATCHES OPPONENT OPEN TO SCORE POINT.





Lucy makes pyramid of two angel floats.

Badminton, Tumbling Give Winter Activity

Rainy winter days do not discourage energetic tumbling and badminton classes held indoors. Tumbling offers an opportunity to strengthen muscles, to test balance, and to improve coordination. Miss McKemie stands guard patiently over the quivering, not-too-steady pyramids, while Miss Manuel teaches the rules and fine points of badminton. As the sound of the birdie on the strings becomes frequent, and students become proficient, inter-class tournaments begin.

NANCY WILKINS STRETCHES TO RETURN OUTSIDE BIRDIE.



PLAYER MUST CONSERVE HER ENERGY.



RIDERS DISMOUNT AND HOLD HORSES IN LINE WHILE THEY AWAIT FURTHER INSTRUCTION FROM MR. VOGT.



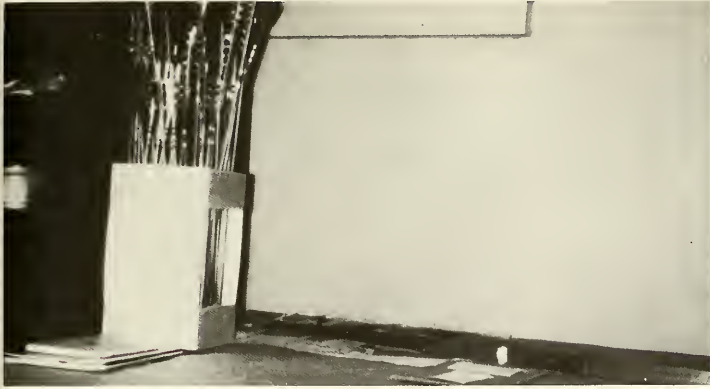
MRS. VOGT RIGHTS MASON'S SLIDING SADDLE.

Golf, Riding Offer Off-Campus Sports

Driving golf balls from the hockey field through a chemistry window and slipping from the saddle into a creek may be ludicrous experiences of beginning golfers and horseback riders. Later stages of progress mean trips to the American Legion Golf Course for golfers or jumping in the ring for riders. The change from campus scenery provided by wooded trails at Vogt's Riding Academy makes Joe and Theresa's blue station wagon a welcome sight to green horsewomen.

Golfers avoid looking up 'til swing's close.





These arrows, quivers, scores contrast with tenseness in meet.

Archery Encourages Skill of Individual

A steady hand, strong arm, firm footing, good posture, and *Patience* are requirements for a top-notch archer. Tuesdays are open archery days on the athletic field. An Invitational Tournament brings together four students from each class, while the school's sharpest shooters participate in the Queens College Tournament and Women's Intercollegiate Telegraphic. In any competition hours of practice seem justified when, at the right moment, an arrow pierces the yellow ring.



ANN COUNTS POINTS, SAVING BEST 'TIL LAST.



ARCHERY CLASS PRACTICE CONTINUES IN LATE FALL.



TENNIS CLUB MEMBERS: FRONT ROW—A. Thomas, A. Hutchinson, F. Winn, N. Barker. BACK ROW—M. Snead, M. Smith, B. Hende, D. Porcher, B. Kneale.

Novices, Experts Enjoy Tennis Season

Rhythmic bouncing of balls brings life to Agnes Scott tennis courts each fall and spring. Players of varying degrees of skill enjoy the game. Novices chase balls and look with envy at more experienced players in the tennis club. The club sponsors singles and doubles tournaments for both beginners and intermediates. This year freshman Molly Snead was fall singles champion. Doubles tournament winners were recognized at the annual spring A.A. picnic.

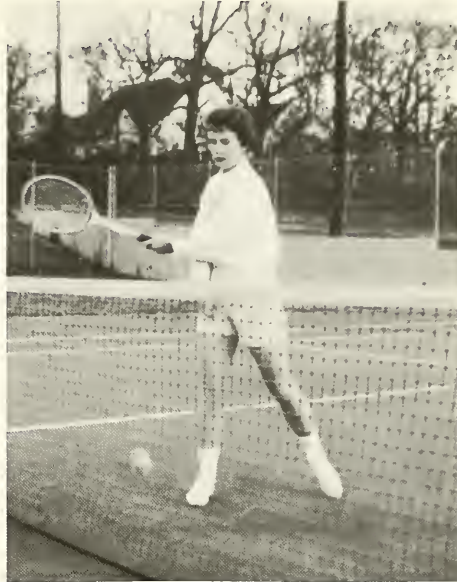


MISS MCKEMIE VIEWS PLAYERS, ACQUIRES TAN.

ANNE THOMAS FOLLOWS THROUGH ON SHORT DRIVE.

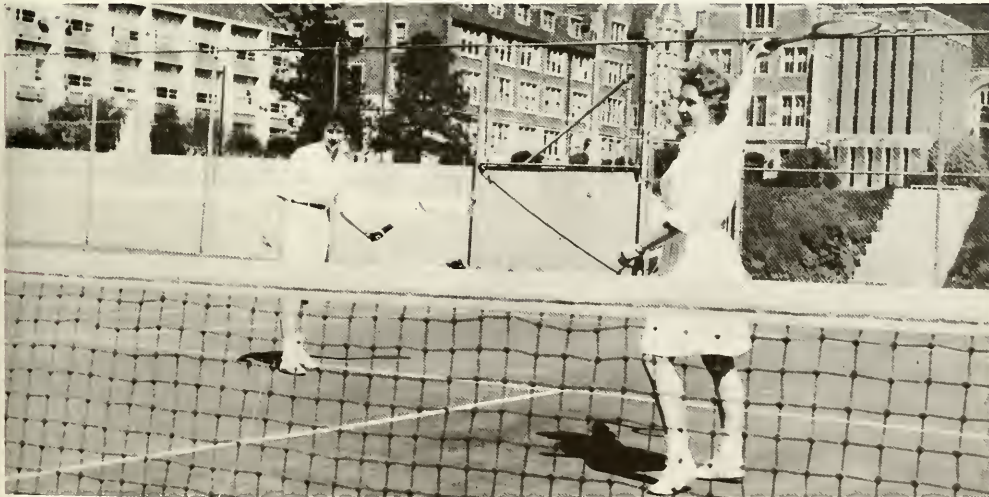


TIRED GIRLS PUT AWAY RACKETS AFTER GAME.



FRUSTRATION IS FEELING KNOWN TO ALL PLAYERS.

FLORENCE PREPARES TO SLAM WHILE MARY JANE, DOUBLES PARTNER, WAITS AT THE BASELINE FOR RETURN.



SENIOR TEAM—*Front row:* A. McBride, M. J. Moore, A. Peagler, A. Boykin. *Back row:* S. Kelso, C. Conner, N. Barr, P. Sylvester.



JUNIOR TEAM—*Front row:* S. Mustoe, R. Shepherd, L. Schow, P. McGeachy. *Back row:* D. Porcher, M. Klein Wassink, M. Harris, J. Heinz.



Scoreboard

April 7				
Sophomores	36	Juniors	28	
Freshmen	25	Seniors	17	
April 14				
Seniors	50	Juniors	double	
Freshmen	15	Sophomores	forfeit	
April 21				
Freshmen	47	Sophomores	29	
Juniors	10	Seniors	23	



FRESHMAN TEAM—*Front row:* A. Foster, M. Ford, C. Connor, A. Pennebaker, S. West. *Back row:* M. Rodgers, S. James, J. Hodge, M. Mitchell.

SOPHOMORE TEAM: *Front row:* P. McGavock, L. Jones, K. Stapleton, C. Lown, S. Winbigler. *Back row:* P. O'Brian, L. Maddox, M. Kirby, M. Thomas, I. Jones.





"Watch out for a weak spot," one player shouts.

Spring Brings Volleyball Tourneys

Fast moving as basketball, exciting as field hockey, volleyball occupied the spring athletic slate. Shouts of "help the ball over," "set it up," and "spike" were heard across the hockey field as students forgot everything but the game at hand. The four classes competed in a series of games which culminated at the end of spring quarter. Sister classes supported and opposed each other in one of the most successful volleyball seasons.

REFEREE MISS MANUEL ENLIVENS EACH SPIRITED GAME.



BETTY DEMONSTRATES HER FAMOUS SERVE.





ADVERTISEMENTS

Shopping trips . . . Decatur, Atlanta, Lenox Square . . . running in to find a blouse, a record, or a single rose . . . quick stops for pie and coffee . . . white gloves on the trolley . . . slow browsing . . . pushing through crowds . . . different food . . . Lenox Square, the green mall with soft weeping willows . . . stone fables . . . struggling home with big bundles and tired feet . . . special services, engraving those June invitations . . . the results of unknown manufacturers . . . men behind the buildings, food, and clothes . . . those who keep things running smoothly . . . making an important difference in our daily routine.

A

Abernathy, Susan Ann, 94, 154, 155
 Abernethy, Nancy Faye, 90, 120, 186
 Academics, 54
 Ackerman, Doris B., 110
 Adams, John Louis, 78
 Adams, Marsha Karen, 132
 Adams, Nefia, 111
 Adams, Sarah, 110
 Addington, Sherry, 110, 164
 Addison, Sally Elizabeth, 120
 Advertisements, 196
 Agnes Scott College, 199
 Agnes Scott News, 158
 Alexander, Amy, 132
 Alexander, Susan, 110, 157, 182
 Allen, Mary Virginia, 75
 Allen, Patricia, 120
 Allen, Vicky, 110, 148
 Allen, Virginia, 120, 148, 152, 170
 Alston, Wallace M., 13, 28, 30, 53, 58, 59, 72
 Alvis, Betty, 132
 Amidon, Sue, 113
 Anderson, Eve, 132
 Anderson, Frances, 120, 149, 156, 158, 160, 182
 Anderson, Roddey, 132, 166
 Andrew, Mary Mead, 78, 121, 167, 172
 Antley, Mary Ann McSwain, 94
 Antonie, Glenda, 133
 Archery, 190
 Aristocrat Ice Cream, 213
 Art Department, 77
 Ashford, Evelyn Ann, 95, 162, 164, 170
 Askew, Nancy Caroline, 111, 148, 149, 182, 183
 Aspinall, Susan Elizabeth, 133, 148, 182
 Athletic Association, 150
 Atkins, Sharon, 169
 Atlanta, 16
 Aurora, 162
 Aviles, Anna Maria, 39, 45, 95, 170
 Ayres, Jane Cate, 121, 166

B

Backus, Ruth, 133
 Bacot, Lucia, 133, 182
 Badminton, 188
 Bagiatas, Angelina Pete, 121, 155
 Bailey, Frances Ann, 121, 122, 156
 Baldauf, Barbara Claire, 94, 95, 162, 164
 Barbon, Claudia, 133
 Barger, Nancy, 133
 Barge-Thompson, Inc., 218
 Barker, Nancy Jane Bringhurst, 95, 192
 Barnes, Mary Ellen, 13, 41, 45
 Barnett, Beth, 121
 Barnwell, Willette, 121, 148, 186

Barr, Nancy Carol, 95, 150, 157, 158, 166, 182, 183, 186
 Barrett, Nancy, 111, 158
 Bartlett Tree Expert Company, 212
 Basketball, 185
 Bates, Leewood, 104, 121
 Batson, Nancy Saunders, 95, 96, 149, 154, 155, 160, 162, 182
 Bauer, Boyd, 132, 133, 138, 171
 Baumgardner, Laretta Wandell, 35, 54, 95, 172
 Bayer, Marlene, 79, 167
 Baxter, Karen, 133
 Beard, Ann Gloria, 149
 Beauties, 36
 Belcher, Ginny, 133
 Bellune, Maurine Elizabeth, 95, 149, 164, 170
 Belvedere Motel, 212
 Bennet, Jane C., 95
 Bergstrom, Sarah Jeannette, 45, 121
 Beverly, Mary Jo, 133, 140, 154, 155
 Bevier, Pamela Jean, 96, 168, 170
 Bible Department, 73
 Binkley, Jacquelyn, 121
 Black Cat, 24
 Blackfriars, 27, 46, 164
 Blackmore, Susan, 133, 155
 Blomquist, Sara, 111
 Boatwright, Betsy, 111, 170
 Boineau, Sallie, 111, 157
 Bond, Mary Alverta, 65
 Bond, Nancy, 110, 111, 149
 Boney, Mary L., 73, 161
 Boone, Juanette C., 67
 Booton, Ann, 133
 Boswell, Meade H., 111, 169, 182, 183, 185, 186
 Bowen, Carey Springer, 13, 111, 154, 155, 164, 165, 182
 Boykin, Martha Alice, 4, 87, 96, 164, 182
 B.O.Z., 163
 Bradford, Nancy, 133, 163
 Brandeis, Judith Clark, 96, 167
 Brantley, Judith Gail, 121
 Bray, Alice B., 67
 Bray, Doris Evelyn, 79, 121, 166, 167, 172
 Brennan, Jean, 96, 169
 Bridgman, Josephine, 85
 Broad, Anne Lansdale, 96, 101, 149, 150, 160, 171, 180, 182
 Brock, Donna Jean, 96, 169
 Brooks, Brenda, 133
 Brown, Barbara, 121
 Brown, Cornelia Persons, 96, 100, 148, 160, 169, 186
 Brown, Damaria Etta, 121, 155, 169, 182
 Brown, Michael J., 80, 81
 Brownlee and Lively Realty Company, 217
 Brown-Wright Hotel Supply, 214
 Bruce, Becky, 121, 152, 182
 Bruening, Patty, 121, 166, 167
 Bryan, Sally Louise, 45, 97, 149
 Bryan, Susan Cantey, 121, 149, 162
 Bryant, Cornelia, 121, 157
 Buchanan, Clara Jane, 111, 156, 167
 Bullard, Michele Ann, 133, 166, 182, 186
 Bulloch, Linda, 133, 182
 Bullock, Margaret Virginia, 87, 97, 156, 168
 Burgess, Bryce, 121, 172
 Burns, Dorothy Frances, 97, 101, 148, 149, 182
 Butcher, Nancy Ruth, 121
 Byers, Edna H., 68
 Byrd, Joan Falconer, 54, 97, 149, 160, 162, 163

C

Calder, William A., 4, 87
 Calhoun, Germaine, 111
 Callaway, Lucie, 24, 121, 170, 181
 Callaway Motors, Inc., 210
 Campbell, Jo Lynne, 133
 Campbell, Martha Wallace, 112, 166, 168
 Campbell, Nancy Morse, 29, 69, 171
 Campus Grill, 217
 Canada Dry Corp., 201
 Carithers, Virginia, 133
 Carr, Peggy Ann, 133, 181
 Carr, Susan Michael, 133
 Carrigan, Teresa, 122
 Carter, Mary, 68
 Cartwright, Clarissa, 133
 Casual, Corner, 213
 Chambers, Barbara, 133
 Chambers, Kathryn Anne, 21, 97, 150, 171, 172
 Chandler, Sandra, 122
 Chang, Kwai Sing, 73
 Chao, Faith Yao Yu, 97, 169
 Chew, Martha E., 122, 124
 Chi Beta Phi, 168
 Childress, Willie Byrd, 1, 29, 97, 144, 162, 164, 171
 Chiu, Eleanor Venetia, 143
 Christensen, Eleanor Anne, 98, 186
 Christian Association, 154
 Christie, Annie May, 70
 Christmas, 29
 Cilley, Melissa A., 74
 Claridy, Jo, 112, 171, 186
 Clark, Frances, 75
 Clark, Marion T., 84
 Clark, Mary James, 98, 166, 168
 Clarke, Carolyn, 133
 Classes, 90
 Classics Department, 76
 Cloudt's Food Shop, 203
 Cobb, Elizabeth Barber, 98
 Coble, Carolyn, 122
 Coca Cola, 205
 Coffin, Alice Walker, 98, 162, 169
 Coker, Martha O., 65
 Cole, Lynne, 122, 149
 Colonial Store, 201
 Conclusion, 220
 Connecticut Mutual Life, 211
 Connor, Judy, 133, 182, 186
 Conner, Vivian, 112, 186
 Connor, Carroll, 98, 159, 169
 Connor, Charlotte, 133, 140
 Conrad, Patricia, 122, 170, 182
 Conwell, Edith Robinson, 90, 98

AGNES SCOTT COLLEGE

“ . . . A Christian liberal arts college where young people may find liberation from ignorance, prejudice, and fear—a center where academic freedom is a reality, where young people can face all the facets of controversial issues, and where Christian insights and purposes are taken seriously.”



Cooper, Jane Hoffman, 98, 171
Cornelius, William G., 24, 80, 81, 169
The Corner Shop, 215
Cowan, Carol, 112
Craft, Carolyn Martin, 134
Craig, Cynthia M., 76, 168
Craig, Polly, 122, 166, 170
Craig, Rebecca L., 91, 122, 170, 185, 186
Crawford, Beth, 112, 153, 163
Creech, Sandi, 122, 155
Crichton, Ann Avant, 98
Crooks, Emmie Beth, 134
Cross, Mary Park, 98, 149, 161, 182
Crum, Lylla, 122
Cruthirds, Judy, 123
Crymes, Mary Wayne, 28, 97, 99, 149, 152, 153, 160
Cumming, Sarah Stokes, 123, 155, 164, 180
Curd, Mary Holman, 112, 170
Curry, Ela B., 27, 61

D

Dalton, Mary Elizabeth, 97, 99, 148, 150, 182, 183, 186
Dance Group, 29, 51, 171
Daniel, Ann, 134
Dankworth, Charlotte, 134
Davenport, Dale, 134
David, Diane, 134
Davidson, Dianne, 134, 140, 152, 166, 167
Davis, Caroline, 134
Davis, Linda, 123, 152
Davis, Lucy Maud, 99
Davis, Patricia, 123, 167
Davis, Betty Sandra, 90, 99, 162
Decatur Co-op Cabs, 209
Decatur Federal Savings, 210
Decatur Laundry, 218
Debele, Ann Powel, 123, 149, 182
Dedication, 6
DeKalb New Era, 205
Delaney, Ellen, 112
Denton, Lynn, 123, 154, 170
Dickerson, Natalie Elizabeth, 149
Dickert, Luzie Marguerite, 99, 167
Dickson, Joan, 134
Dixon, Kathleen, 134
Dobbins, Dianne, 134
Doerpinghaus, S. Leonard, 85
Doherty, Tina, 123, 131
Dolphin Club, 35, 171
Doison, Molly, 13, 20, 32, 112, 164, 171
Draper, Leland, 123
Drucker, Miriam K., 123
Duncan, Barbara, 134
Duncan, Judy, 32, 112, 149, 171
Dunn and Son, 213
Dunstan, Florene J., 74
Dupuy, Nancy Lee, 123
Dustman, Lane, 134
Duvall, Nancy Malloy, 34, 123, 155, 171, 186

E

Eckardt, Jo Ann, 123
Economics Department, 80
Ector, Sara Ellen, 134
Editor's Last Word, 221
Edson, Mary R., 134
Edwards, Nancy C., 65
Edwards, Sharon Louise, 135, 163
Elam, Susan Hall, 34, 123, 164
Elkins, Mary Beth, 99
Elliot, Pamela, 135
Ellis, Gloria, 123, 172
English Department, 70
Eltzroth, Judith, 135
Entrekin, Barbara, 135
Epps, Sue, 135
Erickson, Marjorie, 61
Essam, Suzanne, 64
Eta Sigma Phi, 168
Evans, Emily Ann, 112, 180, 181, 186
Everett, Sarah Helen, 99, 156, 158

F

Faces, 12
Fall Frolics, 26
Farlowe, June Kennette, 8, 123
Faucette, Letitia Brown, 123, 164, 182
Fearon, Joan, 23, 135
Features, 18
Fencing, 188
Field, Nora, 135
Fincher, Mary Jane, 123
Fine Arts Festival, 46
Flythe, Pat, 34, 112, 148, 154, 161, 172
Folio, 163
Ford, Mary Bruce, 24, 135
Fortson, Marian, 13, 112, 148, 164, 165
Foster, Anne, 135, 149
Foster, Fay Dianne, 99, 157, 164, 171
Foster, Garnett, 135
Foster, Helen, 135
Fowler, J. W., 66
Fowler, Rachel Ann, 61, 99, 167
Fox, Mary W., 84
Frazer, Carolyn, 135, 181
Frazer, Mell Alice, 100, 170, 172, 186
Frederick, Peggy, 29, 113, 145, 170, 171
Freeman, Anna Belle, 123, 128, 181, 182, 183
Freeman, Jan, 135
French Club, 170
French Department, 75
Freshmen, 133
Frierson, W. J., 84, 88
Fulcher, Nancy Lee, 123, 167
Fuller, Elizabeth Ann, 29, 100, 145, 155, 171
Fulton Supply Company, 201
F. W. Woolworth Company, 211

G

Gaines, Florence Ann, 100, 167, 196
Garber, Paul L., 73, 88
Gary, Julia T., 84
Gatewood, Betty Ann, 123, 148, 186
Gay, Emmelle Greer, 135
Gaylord, Leslie J., 86
Gearreald, Lindy, 124, 172
Gerald, Karen Elizabeth, 135
Gerke, Johanna, 67
German Department, 74
G. Graham Williams Company, 203
Gheesling, Nancy Ethiel, 124, 150, 156, 162
Gilbert, Livingston, 113, 156
Gilbertson, Jane, 124
Gilbreath, Lillian R., 79
Gillespie, Betty, 113, 148
Gillespie, Betsy, 135
Gilliland, Kay, 113, 155, 157, 162, 182
Gilmour, Ethel K., 54, 160, 180, 181
Glass, Nancy Ellington, 100, 156, 162
Glee Club, 29, 50, 166
Glenwood National Bank, 209
Glenwood Paint Center, 210
Glick, M. Kathryn, 76
Glover, Harriett T., 113, 169, 182, 186
Goode, Runita M., 65
Goodwin, Caroline Tense, 100, 148, 149, 164, 182
Gordon, Lucy Harrison, 124
Graduation, 52
Gray, Netta E., 85
Green, Elvena M., 71, 165
Green, Virginia Gayle, 100, 154, 171
Greene, Marion Lucinda, 100, 155
Gregg, Alva Hope, 101, 166
Gregory, Mary Ann, 124, 170
Grey, Susan B., 113, 148, 157, 168, 172, 182
Griffin, Linda Ann, 135
Griffin, Jane Ellen, 149
Griffin, Nina, 135
Griffith, Martha, 135
Groseclose, Nancy P., 85
Guion, Mariana F., 135, 166, 182, 186
Gwaltney, Katharine Craven, 101, 148, 180, 182, 186

H

Hages, Christy, 101
Hagopian, Roxie, 78, 166
Haire, Adrienne, 113, 149, 170
Hall, Nancy Farrow, 101, 150, 151, 182, 183
Hall, Mae, 23, 135
Hancock, Jane, 135, 170
Hanna, Edith, 115
Hanna, Martha Brock, 13, 26, 101, 164
Hanson, Sigrid, 124, 166, 167
Haralson, Karen, 124, 172, 176
Hardesty, Ann, 124, 180, 182, 185, 186



BEST WISHES

WATSON PHARMACY

309 E. College Ave.

DR 3-1665

DECATUR, GEORGIA

Exclusive But Not Expensive

LANIER FLORIST

2699 E. College Avenue

Decatur, Georgia

FULTON SUPPLY COMPANY

INDUSTRIAL, TEXTILE CONTRACTORS

SUPPLIES & MACHINERY

ATLANTA

GEORGIA

For
Homes
Rentals
Insurance
Investments

In Decatur or DeKalb County

See or call us

WHEAT WILLIAMS REALTY

"Realtors"

119 E. Ponce de Leon

DR 7-2606

DR 7-2607

Decatur, Georgia

COMPLIMENTS OF

W. L. COBB CONSTRUCTION COMPANY

"The Flavor you like

The Name You Know"

CANADA DRY CORP.

1910 Murphy Ave.

PL 3-2183

FOR ALL OCCASIONS

WRITING
PAPERS
THAT
CREATE
AN IMPRESSION

Montag's

MONTAG, INC.

ATLANTA, GA. — NEW YORK — TERRELL, TEXAS

- Harley, Louise, 62, 63
Harms, Margaret Grogan, 124
Harn, Muriel, 74
Harper, Betty Jean, 113, 170
Harris, Irene L., 79
Harris, Mary Agnes, 113, 166, 170
Harrison, Edith Nell, 155, 169
Hart, Catherine, 135
Hatfield, Bonnie G., 125, 172
Hatfield, Ethel J., 67
Hattox, Carolyn, 125
Hawes, Laura, 135
Hawley, Judith, 125, 153
Hayes, George P., 70, 169,
Heard, Janice, 93, 113, 152, 153
Hearn's Jewelry Company, 212
Heath, Nancy, 114, 154, 168, 169
Heinrich, Sue, 34, 125, 154, 155
Heinz, Judy, 114, 150, 163
Hemphill, Betty, 135
Hendee, Beth, 114, 169, 172, 186, 192
Henderson, Harriett Smith, 114
Henderson, Mary Jane, 101, 168
Henry, Janice Lynne, 101, 152, 156
Herbert, Eloise, 74
Herbert, Lucy, 135
Hershberger, Ann, 117
Herzog, Hildegard, 143, 170, 172
Hickey, Carol, 125, 166
Higgins, Harriet Elizabeth, 102, 157,
196
Higgins, Nancy Jane Boothe, 102, 193
High, Sarah Helen, 100, 102, 140, 148
149, 167
Highland Bakery Inc., 216
Hill, Mary Elizabeth, 33, 102, 169
Hillsman, Judy, 136
Hind, Cindy, 114, 148, 163, 164
Hines, Ellen Virginia, 102, 169
History Department, 81
Hockey, 180
Hodge, Marion Janet, 136, 138, 166,
181, 184
Hodges, Sarah Lou, 136, 163
Hodgson, Ellen, 125, 172
Hoit, Jo Ann, 125, 156
Holley, Margaret, 114
Holloway, Judy, 40, 45, 114, 148, 149
Holman, Sandra, 67
Holmes, Patricia, 102, 152, 156
Hood, Betty, 136, 149, 182, 186
Hopkins, Betty, 83, 114, 162, 171
Hormell, Lynn, 125
Horn, Lynda, 114, 169, 180, 186
Horseback, 190
Hotel Candler, 214
Howell, Miriam, 82
Howes, Sharon Lynn, 136
Hudson, A. F., 66
Hudson, Alethea, 125
Hudson, Hendrik R., 87
Hughes, Annie Evans, 102, 162
Hughston, Beth, 114, 171
Hunt, Mary Louise, 125, 155
Hunt, Nancy Clarette, 136
Hunter, Dianne, 136
Hunter, Jean, 125, 164, 170
Huper, Marie, 77
Hutcheson, Betty, 36, 37, 45, 125, 156
Hutchinson, Ann, 54, 114, 150, 192
Hutto, Adelaide, 136
- I
- Ingram, Linda Jane, 102, 159, 170
International Relations Club, 169
Investiture, 28
Irvingdale Farms Dairy, 205
Irwing, H., 66
Ivey, Julia, 136
Ivey, Nancy R., 67
- J
- Jackson, Carole, 114, 158
Jackson, Sarah Evelyn, 71
James, Sally, 136, 166, 184
J and J Shoes, 214
Jarrell, Lorna Jo, 29, 102, 171
J. C. Penney Company, 214
Jefferson, Betsy, 115, 149
Jenkins, Marian Zimmerman, 103
Jenkins, Thelma, 93, 115, 166
Johnson, Ann Worthy, 68
Johnson, Sandra, 125, 155
Johnson, Virginia Philippa, 103, 164
Johnston, Penny, 115, 149
Jones, Helen, 125
Jones, Ina McAfee, 125, 150, 151,
158, 182
Jones, Lelia, 125, 150, 151, 182, 186
Jones, Mell, 66
Jones, Barbara Oglesby, 68
J. P. Stevens Engraving Company, 205
Juarez, Juanita Louise, 103, 169, 171
Juarez, 32
Juniors, 111
- K
- Kallman, Kit, 115
Kane, Maria Clara, 74
Keith-Lucas, Susan, 136
Kelleher, Donna Jean, 125
Kelley, Jane, 32, 115, 168, 169
Kelly, Lila Ellen, 136
Kelly, Shari Anne, 125, 170
Kelly, Sara Virginia, 90, 103
Kelso, Sarah Leah, 103, 150
Kemp, India Yvonne, 115
Kemp, Katherine Emily, 103, 157,
161, 169
Kennedy, Ann, 136
Kenton, Beverly Jean, 45, 115, 168
Kinard, Milling, 115, 147, 164
King, Harriet, 136
Kingham, Mary Jean, 125
Kipka, Sara, 115, 164
Kirby, Margaret, 125, 186
Kissinger, Martha, 136, 166
Kittrell, Rosemary, 103, 169
Klatz Sales Company, 216
Klein Wassink, Marijke, 74, 143, 149,
182, 183
Kline, C. Benton, 6, 7, 53, 59, 72
- L
- Ladd, Edward Taylor, 82
Laird, Dot, 126, 150, 170
Laird, Mary Louise, 137, 149, 182
Laird, Mell, 137, 164, 186
LaMaster, Jan, 137, 184
Lambert, Lynne, 116, 158, 170
Lambeth, Martha Elliott, 53, 103, 148,
170
Lampley, Gatra Holleman, 22, 137
Lancaster, Jane, 24, 126, 149
Langley, Lynda, 137
Lanier, Andrea, 137
Lanier Florist, 201
Lanier, Rubye Norman, 67
Lapp, Harriette H., 69
Larry C. Morris Insurance, 217
Lavinder, Irene, 126, 156
Lear, Marsha Purdy, 55, 103, 162
Lecture Committee, 161
Lecturers, 30
Lee, Eleanor, 137, 140, 149, 182
Lee, Nancy Ellen, 137
Lee, Shirley, 137
LeGrande, Patricia Gail, 137
LeMonnd, Guthrie Hood, 104, 156,
164, 169, 196
Lentz, Linda K., 116, 154, 158, 164
Leslie, Mary Ann, 116
Lewis, Marie S., 64
Lewis Seed Store, 215
Leyburn, Ellen Douglass, 70
L. G. Balfour Company, 218
Libby, Elizabeth Dillard, 126
Lindsay, Muriel, 137, 153
Lindskog, Virginia Emeline, 126
Linton, Helen, 116, 164, 166, 167
Lipscomb, Mary Taylor, 158, 182
Lipsey, Peggy Mathis, 116
Little, Connie Judith, 55, 126, 158,
169, 172
Little Girls' Day, 28
Lockhart, Bonnie, 116, 148, 166, 170
Logan, Heather, 137
Love, Mildred Elsie, 104, 158, 161
Loving, Bonnie, 126
Lowe, Pat, 126, 156, 181
Lown, Carolyn Marie, 126
Lowrance, D'Nena, 126
Lowry, Mary Hampton, 127
Lusk, Mary Ann, 127, 155
Luther, Patsy, 116, 157, 171
Luther Construction Company, 209
Lynch, Mary, 137
- M
- MacNair, Martha, 137
Maddox, Leigh, 127
Maddox, Julia, 143

Congratulations to the Class of 1961

CLOUDT'S FOOD SHOP

1933 Peachtree Road, N.E.

Atlanta, Georgia



TWELVE OAKS RESTAURANT

1895 Piedmont Road, N.E.

Atlanta, Georgia

Back Better Roads

CATERPILLAR

WILL HELP BUILD THEM



ATLANTA

1540 Northside Drive, N.W. — Phone TR 6-3741

AUGUSTA

1781 Fifteenth Street
Phone RE 3-2241



MACON

4660 Broadway
Phone SH 5-9261

TRI-STATE CULVERT & MFG. DIV.

FLORIDA STEEL CORPORATION

151 DEKALB INDUSTRIAL WAY

DRake 8-1744

Post Office Box 117

DECATUR, GEORGIA

FABRICATORS AND DISTRIBUTORS OF . . .

Corrugated Metal Pipe and Pipe Arch

Asphalt Coated C. M. Pipe and Pipe Arch

Asphalt Coated and Pvd. C. M. Pipe and Pipe Arch

Perforated Corrugated Metal Pipe

Structural Plate Pipe, Pipe-Arch and Arches

Headgates and Auto. Flap Gates

Deep-Beam Guard Rail

Highway Signs and Posts

Special Fabrication for Drainage and Water Control

Installations for Industry and Agriculture

Established 1910

F. GRAHAM WILLIAMS CO.

INCORPORATED

"Beautiful and Permanent Building Materials"

ATLANTA 9, GA.

1690 Monroe Dr., N.E.

Phone TRinity 6-1084



You never outgrow
your need for milk.

ME 6-8677

Atlanta, Georgia

Mahon, Frances, 137
Manley, Harriett Elder, 104, 169
Manuel, Kathryn A., 69
Marable, Nina Louise, 93, 104, 151, 154, 160, 168
Marks, Anne Eugenia, 104, 171
Martin, Charles F., 80
Maud Baker Flower Shoppe, 211
Mauldin, Cammie Jane, 137, 186
Maxwell, Alice, 116
Maye, Lynn, 137
McArthur, Ellen Deal, 127
McBride, Medora Ann, 101, 104, 148, 160, 167
McCanless, Juanita Caroline, 137, 166
McClay, Bonnie Sue, 137
McClellan, Helen Frances, 137
McClure, Virginia W., 62
McCoy, Nancy Catherine, 127
McCracken, Lillian S., 61
McCravey, Mildred Myers, 45, 104, 152, 164
McCurdy, Jean, 137, 150, 182
McCutchen, Ginger, 137, 166, 186
McDaniel, Marilyn, 45, 137, 152
McDowell, Michael, 78
McEachern, Daryle, 137
McElrath, Joanna, 138
McGavock, Page, 45, 127
McGeachy, Peggy, 91, 116, 148
McGinty, Suzanne W., 64
McKelway, Margaret, 68
McKemie, Kate, 29, 69, 185, 192
McKenzie, Sue, 127
McKinley, Margaret, 127
McKinnon, Martha Murray, 127, 161, 168
McLain, Edna Elizabeth, 105, 164
McLanahan, Valerie, 127, 172
McLaurin, Patricia, 127
McLeod, Susan, 138, 149
McLeod, Ann, 116
McMillan, Dinah Lucy, 105, 166
McMillan, Linda, 138
McNair, W. E., 29, 65
Medearis, Jean, 116, 154, 155, 167, 171
Meginniss, Crawford, 138
Melton-McKinney, Inc., 217
Merrick, Mollie, 61
Middlebrooks, Ellen, 42, 45, 116, 152, 153, 158, 167
Middlemas, Ann, 117
Miller, Carol Lynn, 138
Miller, Joel Anne, 127
Miller, Joy, 138
Miller, Rebecca, 138
Miller, Timothy, 78
Miller's Book Store, 216
Milton-Bradley Company of Georgia, Inc., 212
Minter, Anne, 138
Mitchell, Mary Mac, 138, 149, 186
Mitchell, Susan, 138
Moblely, Kathryn Louise, 32, 127, 182, 183
Moblely, Laura Ann, 127
Modern Press, 214
Modlin, Anne Leigh, 105, 152, 153, 155, 156
Montag's, 201
Moore, Mary Jane, 105, 158, 159, 164, 193

Moore, Nancy Adams, 53, 100, 105, 148, 149, 170, 186
Moore, Prudy Ann, 105, 148, 154
Morecock, Lucy Floyd, 127, 151, 154
Mordecai, Barbara Diane, 105, 157, 171
Morelock, Myra, 138
Morrell, Toni, 138
Morrow, Merle, 91, 127
Mortar Board, 160
Moses, Margaret, 25, 33, 132, 138, 149, 163
Mossman, Martha, 127, 149, 155
Moye, Julia, 127
Moye, Letitia Woolfolk, 106, 164, 168, 172
Mueller, Lana Rae, 169
Mulherin, Kelly, 138
Murphy, Ione, 60
Music Department, 78
Mustoe, Susan M., 117, 158, 170
Myhand, Merrilyn, 138

N

Nabors, Jane, 117, 170
Nelms, Nancy, 117, 149, 157
Newman, Lillian, 68
Newsome, Martha Anne, 160, 169
Newton, Carolyn, 139
Nickel, Patty Omera, 127, 130, 144
North, Marion, 106
Norton, Julia, 139, 150, 182

O

Oakes, Laurie, 139
O'Brian, Pat, 127
Ogburn, Kaylynn, 128, 172, 184
Oglesby, Ethel, 117, 156
Olson, Karen M., 139, 166
Omwake, Katherine T., 83
Organ Guild, 167
Organizations, 44
Orientation, 22

P

Pack, Joyce T., 63
Page, Polly, 83, 117, 155, 166, 171
Paine, Polly, 139, 149
Pancake, Emily Campbell, 106, 156, 158, 166
Pancake, Elizabeth, 117, 169
Parrish, Fred K., 85, 88
Parsons, Bette, 128
Patrick, Robin Wilson, 143
Patterns, 14
Patterson, Jane L., 117, 164
Payne, Ann Rivers, 61
Peacock, Gretchen Elliott, 106
Peagler, Grace Ann, 24, 27, 106, 150, 181, 185, 186
Pearson, Caryl, 139, 171
Peltz, Rosemonde S., 67
Pendleton, Nona, 128, 164

Pennebaker, Ann Alice, 139
Pepperdene, Margaret W., 28, 57, 70
Pepsi-Cola, 216
Pet Dairy, 203
Pfaff, Andrea, 139, 171
Phi Beta Kappa, 173
Philip, Margaret Virginia, 84, 106, 158, 168
Phillips, Nancy Miller, 139
Philosophy Department, 72
Physical Education Department, 69
Phythian, Margaret T., 75
Pi Alpha Phi, 169
Piedmont Life Insurance Company, 215
Pittman, Mary Adair, 139
Plemons, Linda June, 128
Poliakoff, Doris, 128, 155
Pollard, Anne Varnado, 106, 155, 157, 166
Pollard, Carolyn R., 126, 128
Porcher, Dorothy Reid, 117, 148, 150, 182, 192
Posey, Walter B., 80, 81
Pound, Ida Elizabeth, 124, 128
Preston, Janef N., 70
Prichard, Currie, 139
Prickett, Jessie Sue, 139
Priemeyer, Judith Nan, 139, 182
Pruitt, Sylvia, 117, 156, 162, 167, 182, 186
Psychology Club, 171
Psychology Department, 83

R

Radford, Janet, 139, 166
Rau, Rebecca, 128, 170
Rawl, Tay Gibson, 139, 149
Ray Smith Company, 205
Reeder, Margaret Alice, 24, 139, 148
Renfro, Pat, 139, 160, 182, 186
Reynolds, Elizabeth Jane, 139
Reynolds, Rebecca, 139
Rice, George E., 83, 89
Rice, Marti, 139, 166
Richards, Marion, 139
Richards, Susan C., 139, 166
Richardson, Pauline, 43, 45, 139
Rion, Mary L., 71
Rippy, Sara L., 32, 57, 86
Risher, Ann, 128, 156, 158, 169
Ritchie, Geneva Parks, 139, 186
Roberts, Carol Elaine, 139, 167
Roberts, Margaret Fox, 26, 118, 164
Roberts, Mildred Scott, 140
Robertson, Kay, 128, 149, 158
Robinson, Charme Elizabeth, 106, 167, 168
Robinson, H. A., 86
Roden, Joanna Douglas, 35, 107, 169, 172
Rodgers, Margaret, 140
Rodwell, Sally Ann, 25, 120, 129, 149
Rogers, Carol, 118
Rogers, Carroll, 118
Rogers, Elizabeth A., 140
Rogers, Lebby, 118, 148
Rogers, Helen Patricia, 107, 162, 166, 171



MINNIE QUARTS SAYS:

Be sure to get your daily Vitamins.
Drink Irvindale Multi-Vitamin milk
Fortified with all the Vitamins you need every day.
Call TRinity 2-7703 for Home Delivery.

IRVINDALE FARMS DAIRY

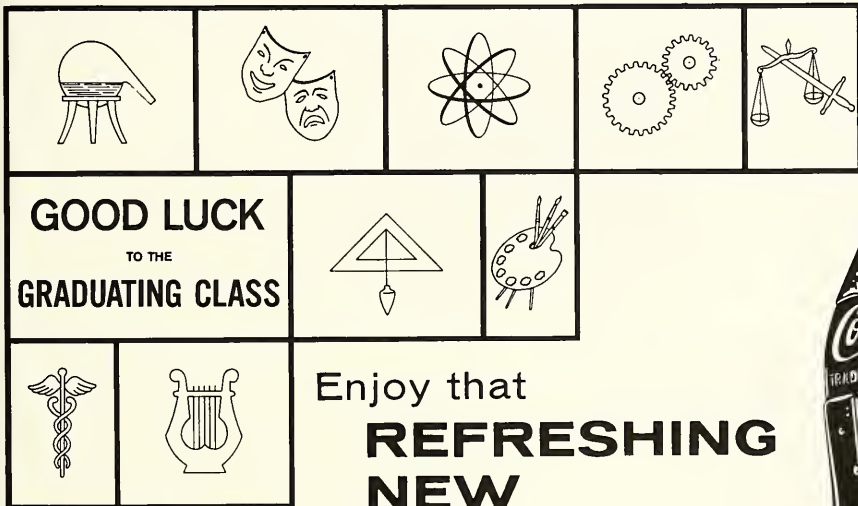
484 Plaster Avenue
Atlanta, Georgia

BEST WISHES TO THE CLASS OF 1961

THE DEKALB NEW ERA

124 Atlanta Avenue

Decatur, Georgia



Enjoy that
**REFRESHING
NEW
FEELING!**



BOTTLED UNDER AUTHORITY OF THE COCA-COLA COMPANY BY **THE ATLANTA COCA-COLA BOTTLING COMPANY**

J. P. STEVENS ENGRAVING CO.

Established 1874

Society Stationers

110 Peachtree N.W.

JA 2-6870

Tempo-Geha Mimeograph Equipment & Supplies

Printing . . . Office Supplies . . . Service



RAY SMITH COMPANY

2588 Cascade Road, S.W.

Atlanta 11, Georgia

PLaza 8-1852

PLaza 3-4478

Rogers, P. J., 64
Rose, Anne Claiborne, 129, 148, 182
Roy D. Warren Realty Inc., 209
Russell, Joanna, 118
Russell, Anne Marie, 107

S

St. Clair, Miriam, 129, 166
Sanders, Doris, 118, 162, 166, 169
Sayers, Elaine, 118, 152, 155, 171
Saylor, Ann, 129
Scales, Lucy Roper, 94, 107
Scandrett, Carrie, 28, 56, 60
Schenck, Betsy, 120, 129, 154, 182
Schepman, Anneke, 129, 144, 171
Schow, Lucy, 118, 158, 169, 182
Schwab, Molly Jane, 24, 107, 162
Scott, Colby, 129
Scott's Landscape Gardeners, 214
Seagle, Ruth, 118
Seay, Rebecca Joyce, 107, 171
Selsler, Karen Sue, 140, 182
Seniors, 94
Sevier, Susan, 129
Sewell, Margaret Bland, 75
Sharian, Inc., 211
Sharp, Jane Rutledge, 129, 166, 186
Sharp, Linda Lee, 140
Shawen, Sandra, 140
Shearer, Catherine, 140, 171
Sheffield, Lila Carter, 140
Sheild, Ann Howard, 140
Shepherd, Lee, 129, 158, 188
Shepherd, Ruth, 118, 164
Sheriff, Nancy Roberta, 10, 129, 158, 182, 185
The Sherwin-Williams Company, 211
Shuford, Nancy Cline, 140
Shugart, Margaret Ann, 118, 161
Sibley, Nancy, 129, 158
Sights, Patricia, 140
Sigma Alpha Iota, 167
Silhouette, 156, 222
Silhouettes, 8, 20, 56, 92, 146, 176
Simonton, Brenda, 140
Slade, Cottie, 129
Smallwood, Eve, 140
Smith, Anna Greene, 80
Smith, Annette, 32, 118, 156, 166, 167
Smith, Annie Mae, 66
Smith, Elaine, 118
Smith, Florence, 81
Smith, Hal, 59
Smith, Jo Allison, 118, 164
Smith, Kathryn Page, 87, 96, 147, 149, 156, 164, 168
Smith, Lillian, 110, 119, 152, 157, 170
Smith, Marian, 140
Smith, Marion, 140, 149, 166, 192
Smith, Martha Harriet, 107, 158
Smith, Nancy Jane, 141, 163
Smith, Suzanne, 129, 158, 160
Snead, Molly, 141, 149, 182, 183, 192
Snyder, Sarah F., 141
Social Council, 152
Sociology Department, 80
Sophomore Parents' Weekend, 34

Sophomores, 121
Spanish Club, 170
Spanish Department, 74
Speech and Drama Department, 71
Speer, Betty Earle, 141, 182
Spirit, 178
Sports, 174
Stack, Elizabeth Cole, 82
Stanley, Pam, 44, 45, 141
Stapleton, Anne, 65
Stapleton, Kaye, 34, 38, 45, 129, 167, 186
Steakley, Laura Lee, 140, 141, 186
Stebbins, Gay, 141
Steel, Chloe, 75
Steele, Laura, 62
Stevens, Elizabeth Hammond, 107, 163
Stevens, Suzie Favor, 123, 162
Stevenson, Elizabeth Rabe, 64
Stewart, Elizabeth, 141, 166
Still, Sandra Joan, 119, 149, 162
Stillman, Nancy Martin, 28, 94, 108, 149
Stokes, Mary, 119, 148
Stone, Nancy Ada, 24, 108, 182, 183, 186
Stovall, Genie, 129, 167
Street, Rosalyn Clare, 141
Strickland, Catherine W., 141, 186
Stubbs, Maxime, 129
Student Government, 149
Sullivan, Ann Lee, 119, 149, 164
Sundy, Joh-Nana, 141
Swart, Koenraad W., 81
Swint, Katherine M., 68
Sweitzer, Letitia, 119, 182
Swimming, 184
Sylvester, Ellen Pamela, 96, 108, 150, 160, 182, 186

T

Table of Contents, 4
Tabor, Nell B., 129, 149
Talmadge, Harriet H., 61
Tanner, Margaret, 141
Tart, J. C., 64
Tausig, Sandra M., 141
Teague, Annette, 63
Teague, Caroline, 129
Teasley, Linda Grant, 108, 162
Temple, Betsy, 141
Tennis, 192
Thagard, Lynne, 141
Theme, 2
Thomas, Anne, 110, 119, 148, 165, 170, 182, 192, 193
Thomas, Caroline Simmons, 108
Thomas, Esther Frances, 108, 149, 158, 169
Thomas, Leslie Elizabeth, 129, 153, 158, 159
Thomas, Mary Beth, 130, 149, 150, 186
Thomas, Pierre, 75
Thomas, Virginia Caroline, 108, 168
Thompson, Ann, 119, 148, 149
Thompson, Judith, 130, 170

Thorne, Sylvia, 141, 182, 186
Townsend, Joyce, 119, 171
Traeger, Rose Marie, 119
Tri-State Culvert and Manufacturing Division, 203
Tri-State Tractor Company, 209
Troth, Rosslyn, 130, 158
Trotter, Margret G., 70
Troup, Mary, 130
Trustees, 59
Tumblin, John A., 80
Tumbling, 189
Turnage, Cecilia Gordon, 26, 34, 124, 130, 156, 158, 160, 164, 167, 170
Turner, Helen R., 64
Turner, Dorothy H., 66
Tuthill, Susan, 141
Twelve Oaks Restaurant, 203
Tyler, Sara, 141

U

Underwood, Elizabeth Shepley, 108

V

VanDeman, Margaret Wallace, 130, 155, 162
Vass, Edna, 130, 154, 166, 168
Vick, Rebecca Sue, 141, 154, 182
Volleyball, 195

W

Waddle, Ellen Jane, 141
Waffle House, 214
Walden, Grace W., 68
Waldorf Motel, 215
Walker, Bebe, 119, 149
Walker, Merle G., 72
Walker, Patricia White, 93, 97, 108, 140, 149, 150, 160, 180, 182, 183
Wallace, Linda, 130
Wallace, Jane, 141, 182
Walters, Mary Ruth, 130
Walton, Louisa, 130
Ware, Janet Virginia, 141
Ware, Mary Fairfax, 109, 155, 162, 166, 170
Warren, Ferdinand, 54, 77, 89
Warren, Ninalee, 141, 182
Wasell, Nancy Michelle, 141
Watson's Pharmacy, 201
W. C. Cobb Construction Company, 201
Weakley, Dorothy, 68
Wearn, Mary Margaret, 141
Weather, 10
Webb, Beth, 131, 182, 183
Weekley, Mary Lynn, 142
Wells, Hildegarde, 142, 182, 186

Elliott's

PEACHTREE STUDIO, INC.



Specialist in Bridal Photography
Engagement and Formal Portraits
Wedding Candid in Color or Black & White

Dale Roberts

Photographer for 1961 *Silhouette*



- West, Suzanne Penn, 142, 166
 Westerveit, Robert F., 77
 Welch, Frances, 142
 Welch, Jane Simmons, 90, 109, 150, 174
 Wheat Williams Realty, 201
 Wheless, Suellen, 142, 166
 Whitaker, 142, 182, 186
 White, Barbara Ann, 142
 White, C. Dexter, 66
 White, Katherine, 119, 155, 171
 Whitfield, Jan, 119
 Whitton, Margaret, 22, 24, 142
 Wicker, Leonora Irene, 142
 Wilburn, Llewellyn, 69
 Wilkins, Nancy Kate, 131
 Wilkinson, W. B., 66
 Willey, Florence Rhoda, 42, 166, 170
 William H. Rice, 215
 Williams, Ann, 131, 156, 191
 Williams, Christine, 142
 Williams, Julianne, 131, 155, 164
 Williams, Mary B., 86
- Williams, Penny Elizabeth, 109, 169
 Williams, Sally, 142
 Willow Springs Motel, 209
 Wilson, Linda, 131, 157
 Wilson, Paula Ann, 77, 109, 155, 180, 181, 182, 183
 Winbigler, Susan D., 131
 Winegar, Cheryl, 131
 Winn, Florence Callaway, 109, 157, 162, 170, 192, 193
 Winter, Roberta, 57, 71
 Winterle, Mary Jo, 142
 Withers, Elizabeth, 119, 131, 152
 Withers, Irene Elizabeth, 186
 Womack, Jane, 13, 131, 165
 Womack, Mary, 142, 163, 166
 Womeldorf, Ann Neal, 109, 164
 Wood, Ann Dudley, 119, 164, 170, 182
 Woodell, Jane, 142
 Wornon, Maria B., 142, 182
 Wurst, Mariane, 92, 131, 162
 Wyatt, Betty Sue, 109, 156, 157, 164
- Y
 Yancey Brothers Company, 203
 Yang, Lucy O., 131, 155
 Yearley, Fontaine, 131, 168
 Young, Myrna G., 76
 Younger, Katherine, 120, 131, 170, 180, 182
 Yount, Anita Frances, 142
- Z
 Zealy, Ruth K., 142, 163
 Zenn, Elizabeth, 76
 Zep Manufacturing Company, 212
 Zimmerman, Louise, 131
 Zimmermann, Mildred Lafon, 109, 169
 170

Photo Credits

- Frances Anderson, 11, 28, 30, 34, 74, 93, 131, 134, 136, 138, 153, 178, 179, 190
 Helen Everett, 30, 53, 66, 67, 83, 84, 96, 97, 100, 148, 154, 163, 165, 168, 169, 179
 Dale Roberts, 21, 22, 23, 26, 27, 29, 35-44, 57, 58-66, 68-87, 94-145, 148-158, 162-164, 167, 169-176, 184-186, 190, 196, 197
- Nancy Barr, 4, 5, 12, 30, 31, 32, 61, 62, 63, 64, 65, 67, 77, 78, 80, 82, 86, 87, 88, 92, 94, 104, 105, 110, 120, 124, 130, 132, 150, 151, 152, 153, 155, 156, 157, 158, 159, 160, 161, 162, 163, 168, 181, 182, 183, 187, 188, 189, 191, 192, 193, 217, 222, 223
 Kay Gilliland, 34
 Carol Goodwin, 189
 Elvena Green, 16, 20, 32, 33, 57, 71
 Irene Lavinder, 126
 Jimmy Lee, 17, 32, 33, 54-55, 161, 167
 Mary Jane Moore, 179
 Emily Pancake, 153
 Sylvia Pruitt, 6, 67, 70, 93, 151, 154, 182, 183
- Sally Blomquist, 160
 Jim Brantley, 7, 12, 13, 23, 24, 25, 28, 52, 53, 66, 128, 138, 166, 180, 181
 Bill Diehl, Jr., 147, 165
 Dwight Ross, Jr., 89
 Annette Smith, 67, 71, 73, 79, 148, 159, 172
 Page Smith, 1, 2, 4, 5, 6, 8, 9, 10, 11, 12, 13, 14, 16, 29, 31, 45, 56, 66, 72, 76, 80, 85, 88, 89, 93, 101, 122, 146, 149, 164, 165, 170, 178, 220-221
 Ivan Tucker, 26
 Paula Wilson, 18-19

Compliments of

**LUTHER CONSTRUCTION
COMPANY**

Grading Contractors
4485 Memorial Dr.
DECATUR, GA.
BU 9-3122

Prepare today for a better tomorrow

ROY D. WARREN REALTY, INC.

Suite 418 Healey Bldg.

Atlanta

Phone JA 3-6262

**D
E
C
A
T
U
R** **C
O
-
O
P** **C
A
B
S**

WILLOW SPRINGS MOTEL

4844 Memorial Drive

Stone Mountain, Georgia

COMPLIMENTS OF

**GLENWOOD
NATIONAL BANK**

Your Statewide

INTERNATIONAL HARVESTER

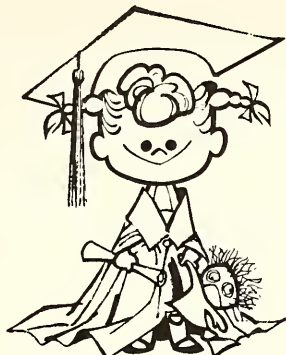
Construction Equipment
Distributor

TRI-STATE TRACTOR CO.

Atlanta—Macon

Albany—Augusta—Savannah

Member F.D.I.C.



KATY
RESOURCE BANK

**SAVE WHERE
KATY SAVES**

4%
current rate

**THERE'S ALWAYS
A SPECIAL WELCOME
AT DECATUR FEDERAL SAVINGS
FOR STUDENTS, FACULTY,
ALUMNI AND FRIENDS OF
AGNES SCOTT**

**DECATUR
FEDERAL
SAVINGS**

and Loan Association

Main Office: 103 Sycamore St.

Decatur, Georgia

Branch Office: 1807 Candler Rd.

Phone: DRake 8-8821

**GLENWOOD
PAINT CENTER**

3182 Glenwood Rd.

DR 7-6256

Best Wishes to
Agnes Scott College
from

CALLAWAY MOTORS, INC.

231 W. Ponce de Leon Ave.

Decatur, Georgia

OLDSMOBILE

by

General Motors

Compliments of

SHARIAN, INC.

Rug and Carpet Cleaning

DR 7-6488

THE SHERWIN-WILLIAMS CO.



Paints—Varnishes—Lacquers—Leads—Oils

Enamels—Brushes and Painters' Supplies

DR 7-1751

217 Trinity Place

Decatur, Georgia

CONNECTICUT MUTUAL LIFE

522 Fulton Federal Building

Atlanta, Georgia

SOUTHEASTERN ELEVATOR COMPANY

DESIGNERS AND MANUFACTURERS

441 Memorial Drive, S.E.

Atlanta, Ga.

Maud Baker Flower Shoppe

252 W. Ponce de Leon Avenue

Deliveries throughout greater Atlanta

DR 7-3818

Compliments of

F. W. Woolworth Company

1740 Peachtree St., N. E.

Atlanta, Georgia

School & Art Supplies

Craft Supplies

MILTON BRADLEY CO. of GA. Inc.

348 Forrest Ave., N.E.

Atlanta, Ga.

TOYS ★ ★ GAMES

HEARN'S JEWELRY COMPANY

131 Sycamore

Decatur, Georgia

Compliments of

Zep MANUFACTURING CORPORATION

Atlanta—Birmingham—Cleveland—Dallas—Kansas City—Newark

BELVEDERE MOTEL

3480 Memorial Drive, S.E., Atlanta, Georgia

Telephone—BUtler 9-6633

Highway 154 Spur of 78-12, located 1 1/2 miles from Atlanta

A DINKLER MOTOR INN

Completely air-conditioned, the rooms are spacious and beautifully decorated with wall to wall carpeting, king size beds, air-foam mattresses, tile baths and other conveniences with free TV and Radio. Excellent restaurant, with tables and counter service. Children's playground, swimming pool and ice skating rink. Free morning coffee and newspaper. New shopping center directly across. Baby sitters available.

BUS. PLAZA 8-5531

RES. POPLAR 6-0414



slife supply company

643 dill ave., s.w., atlanta 10, georgia

wholesale plumbing supplies

: pipe & fittings

: valves

J. W. (BILL) BYRD

When you admire the

beautiful trees on campus

remember

The Bartlett Tree Expert Co.

1240 Clairmont Ave.

DR 8-4553

Aristocrat

ICE CREAM

"All the Name Implies"

Quality Ice Cream for All Occasions



**SIMPLY
WONDERFUL
SPORTSWEAR**

133 Sycamore St.

Decatur, Ga.

"On the Square"

A new Home

See The Beautiful

**Dial Heights and Dunaire
Sub-Divisions**

1 Mile Northeast Avondale on Memorial Drive

Dunn and Son

DR 8-0596

"THE NEWEST WAY TO GIVE
YOURSELF A TREAT"

WAFFLE HOUSE

JUST GOOD FOOD
OPEN 24 HOURS A DAY

#1 2719 E. College Avenue
#2 972 Peachtree St., N.E.
#3 3198 Candler Plaza
#4 1244 Clairmont Rd.

the modern press

printing . . . office supplies

DRake 3-3337

225 N. McDonough St.

Decatur, Ga.

J. C. PENNEY CO.

130 E. Ponce de Leon Ave.

Decatur, Ga.



BROWN-WRIGHT HOTEL SUPPLY

512 W. Peachtree, N.W.

Atlanta, Georgia

J & J SHOES

117 Clairmont Ave.
DR 8-1411

Sandler Of Boston
Foot Flairs

Candler McAfee Center
BU 4-0252

Trim Tread

Suburban Plaza
DR 8-9882

Red Cross
Smart Set

**SCOTT'S
LANDSCAPE GARDENERS**

DRake 8-3857

412 Mimosa Drive

Decatur, Ga.

Avoid Atlanta Traffic—Stop at

HOTEL CANDLER

DECATUR, GEORGIA
105 Modern Rooms

AIR CONDITIONED

Excellent Coffee Shoppe

Headquarters for All Civic Clubs

PLENTY OF PARKING SPACE

L. L. TUCKER, JR., Lessee and Manager

Compliments

of

**Waldorf
Motel**

William H. Rice
On the Square

Dear Agnes:

Your most convenient
store for:

- *Studio Cards
- *Plush Toys
- *Stationery (Mono-
gramming 1 day
service)
- *Party Supplies
- *Wedding Invitations

William H. Rice

111 Sycamore St.
Decatur, Ga.
DR 3-9572



Atlanta General Agents

J. T. Embrey

W. C. Griscom

Earle Vick

Atlanta Special Agent

Virginia M. Carter, '40

A

FRIEND

of

Compliments

The

Corner

Shop

**LEWIS
SEED
STORE**

406 E. Howard Ave.



traditional
for fine
quality and
service

Since 1882, Miller's Book Store has the traditional reputation for fine quality and service with a complete line of supplies for all college needs. From the famous volumes of the world to notebook paper and art supplies . . . from personal gifts of distinction to a complete line of office supplies. No wonder students all over the Southeast look to Miller's Book Store. Mom and Dad did . . . and now this same reputation is as modern as tomorrow. Make Miller's Book Store your home for all college needs.

if it is for office, school, or
home . . . for birthdays,
anniversaries, graduation . . .
for Christmas, Valentine
Day or Easter . . .
You can get it at—



ATLANTA 231 Peachtree Street
64 Broad Street

DECATUR 113 Clairmont Ave.

BUCKHEAD 250 E. Paces Ferry Rd.
3087 Peachtree Rd.

KLOTZ SALES COMPANY

Suppliers to
Agnes Scott College

CANDY CRACKERS PEANUTS

thru
Vending Machines

971 Euclid Ave. N.E.

Atlanta, Ga.

Highland Bakery, Inc.

655 Highland Ave. N.E.

PEPSI-COLA[®]

LARRY C. MORRIS

For Complete Insurance Service

1311 Rhodes Haverty Building

Atlanta 3, Georgia

BROWNLEE & LIVELY REALTY CO.

2374 Briarcliff Road, N. E.

Atlanta 6, Georgia

ME 6-1455

REAL ESTATE & GENERAL INSURANCE

We specialize in the Northeast Section

Compliments of

VULCAN MATERIAL CO.

Concrete Pipe Division

3030 Peachtree Rd., N. W.

Atlanta, Georgia

A FRIEND



Campus

Grill

Two locations:

1387 South Oxford Road — Emory

106 North McDonough St. — Agnes Scott

Compliments of

BARGE-THOMPSON, INCORPORATED

Engineers & Contractors

1415 Howell Mill Road, N. W.

Atlanta, Georgia

MELTON-McKINNY, INC.

PLUMBING

Repairs a Specialty

432 E. Howard Ave.

DR 3-4622

Official jewelers for Agnes Scott rings:

L. G. BALFOUR

333 Peachtree Rd. • Atlanta, Ga.

Thad Wilkins

Ed Jones

Decatur Laundry

250 Trinity Place

Decatur, Georgia

F

INE PRINTING SINCE 1887—

That's the story of Foote & Davies, Inc.

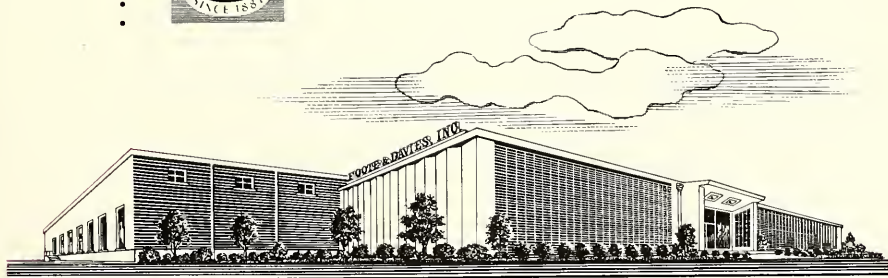
Today we have one of the most modern and best equipped plants in the country. And fine Yearbooks have always been an important part of our business. Our craftsmen believe in quality and strive to produce the "best in the Industry." Our excellent printing doesn't just happen—it's a combination of production research, craftsmanship, and painstaking supervision.

FOOTE & DAVIES, INC.

764 MIAMI CIRCLE, N. E.

Printers • Lithographers • Book Manufacturers

ATLANTA 24, GEORGIA







CONCLUSION

*Graphic . . . searching . . . 1961 Silhouette
photographic aim . . . realization through
seeming eternities in the darkroom . . . ad-
vice of Dr. Calder . . . diligence of photo
staff in assignments . . . action, shadows,
faces . . . patience of Mr. Roberts . . .
editors cheerfully redoing layouts . . . really
trying to meet their deadlines . . . the-
saurus delving to find the word . . . co-
operation on ad section . . . professional,
artistic recognition of our essential advertis-
ers . . . understanding help of Foote and
Davies . . . encouragement of Miss Green
. . . Margaret ever present, ever needed . . .
fresh ideas . . . quiet efficiency . . . all
combined, coordinated . . . presenting . . .
moments in silhouette.*

KPS



Rollei, tripod symbolize 1961 editors' aim.



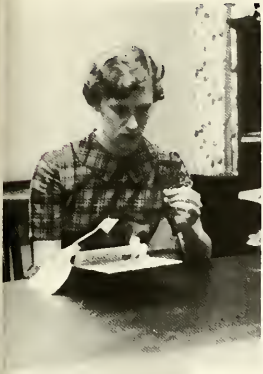
Betty Sue Wyatt

Silhouette Staff



Margaret Bullock and Page Smith

- EDITOR Kathryn Page Smith
- MANAGING EDITOR Margaret Bullock
- BUSINESS MANAGER Betty Sue Wyatt
- ACADEMICS Barbara Mordecai
Barbara Brown, Nancy Glass, Rosslyn Troth, Ann Williams
- ADVERTISING Patsy Luther
Corny Bryant, Dianne Foster, Harriet Higgins, Lillian Smith, Joyce Townsend, Linda Wilson
- ART Sallie Boineau
- CLASSES Susan Alexander
Jo Ann Hoit, Pat Holmes, Betty Hutcheson
- COPY Kathy Kemp
Kay Gilliland, Ann Modlin, Cecilia Turnage, Cheryl Winegar
- FEATURES Sue Grey
Francis Bailey, Dutton Lemond, Ethel Oglesby, Ann Risher
- ORGANIZATIONS Florence Winn
Liv Gilbert, Janice Henry, Patsy Lowe
- PHOTOGRAPHY Nancy Barr
Frances Anderson, Sally Blomquist, Helen Everett, Annette Smith
- PRODUCTION Kay Gilliland
Irene Lavinder, Emily Pancake
- SPORTS Nancy Nelms
Khaki Buchanan, Carol Goodwin, Kathryn Mobley, Josie Roden



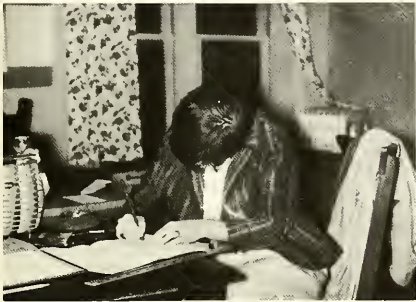
Nancy Barr



Susan Alexander and Sue Grey



Kathy Kemp



Sallie Boineau



Kay Gilliland

Barbara Mordecai



Nancy Nelms



Florence Winn











