




Alvin Scott Holdings







Digitized by the Internet Archive
in 2010 with funding from
Lyrasis Members and Sloan Foundation

<http://www.archive.org/details/silhouette193900agne>



The 1939
S I L H O U E T T E
of
A G N E S S C O T T



The 1939
J I L H O

copyright

ADELAIDE BENSON

and

ANN DUPUY WATGINS

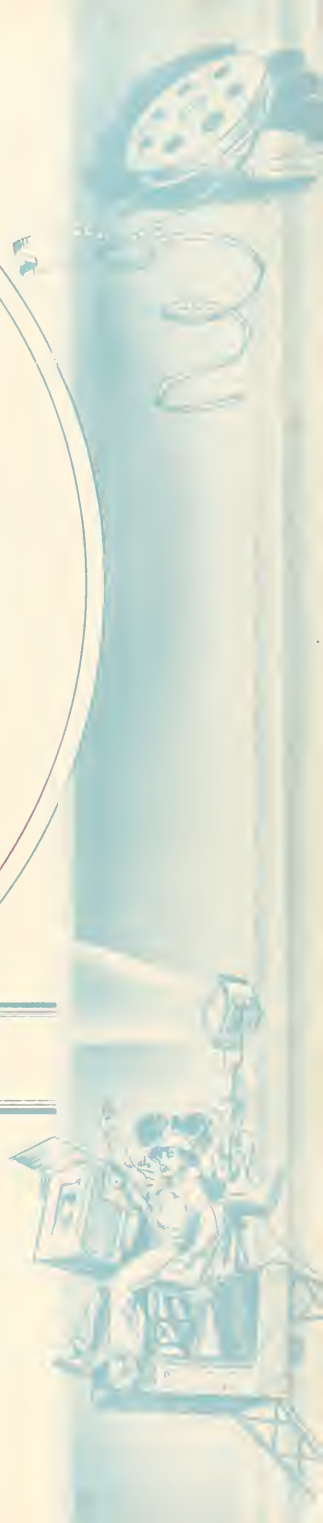




U E T T E

Published by THE STUDENTS OF
AGNES SCOTT COLLEGE

Decatur, Georgia



Foreword

About nine months ago the first step toward reaching a distant goal was taken as the staff of the thirty-fifth edition of the SILHOUETTE was being organized. Today the final product has been put into your hands to meet with your approval or to undergo your criticism. We have made a concerted effort to combine our ideas, our wit, and our energy to put forth a volume which will be pulled from the shelves in future years to add shape to memory's pictures of "the good ole days." By then we shall have forgotten our thrill over being among the first colleges to use natural color photography, but these pages will bring back glimpses of brighter hours. May our contribution to your four-volume set of annuals succeed in giving you a complete, an interesting, and an authentic record of your college career.

Theme

Every year out of that most idealized city of cities called Hollywood rolls endless miles of film telling stories, dramatic and humorous, concerning every phase of human interest. Thinking of our life here at Agnes Scott as a series of ever-changing scenes varying from moments of deepest discouragement and keenest disappointment to the heights of pleasure and fulfilled ambitions, we have noticed the resemblance to the variety of experiences and emotions portrayed in lasting form on the silver screen. Following this idea, we have divided the activities of the year into four sections, each of which is to be covered by one reel of film. It is our wish that after you have viewed the four reels which follow, you will have the complete picture of the various activities on this campus in the year 1939—a pictorial record of Agnes Scott seen through the camera's eyes. With this end in mind production got under way with the release date set for the end of May and there was a scurry of activity as the order was given: Lights! Action! Camera!

Dedication

Her spirit will pervade the campus for years to come, while those who knew her will treasure the memory of her throughout a lifetime. The embodiment of the Christian ideals of faith, hope and charity, she was loved by all and unconsciously exerted an influence upon fifty generations of students. In a quiet, unassuming manner she accomplished wonders, for she was guided by one idea—the improvement of Agnes Scott College. We dedicate the 1939 SILHOUETTE to the memory of

MISS NANNETTE HOPKINS



P R E V I E W S



REEL 1

C O L L E G E



REEL 2

A C T I V I T I E S



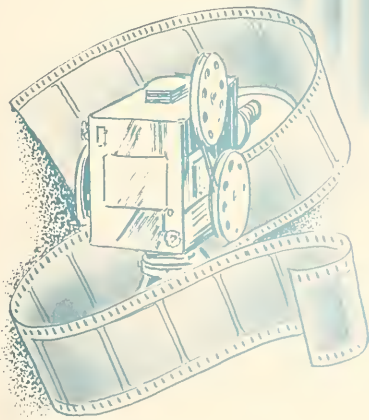
REEL 3

A T H L E T I C S



REEL 4

F E A T U R E S



COLLEGE

Reel 1



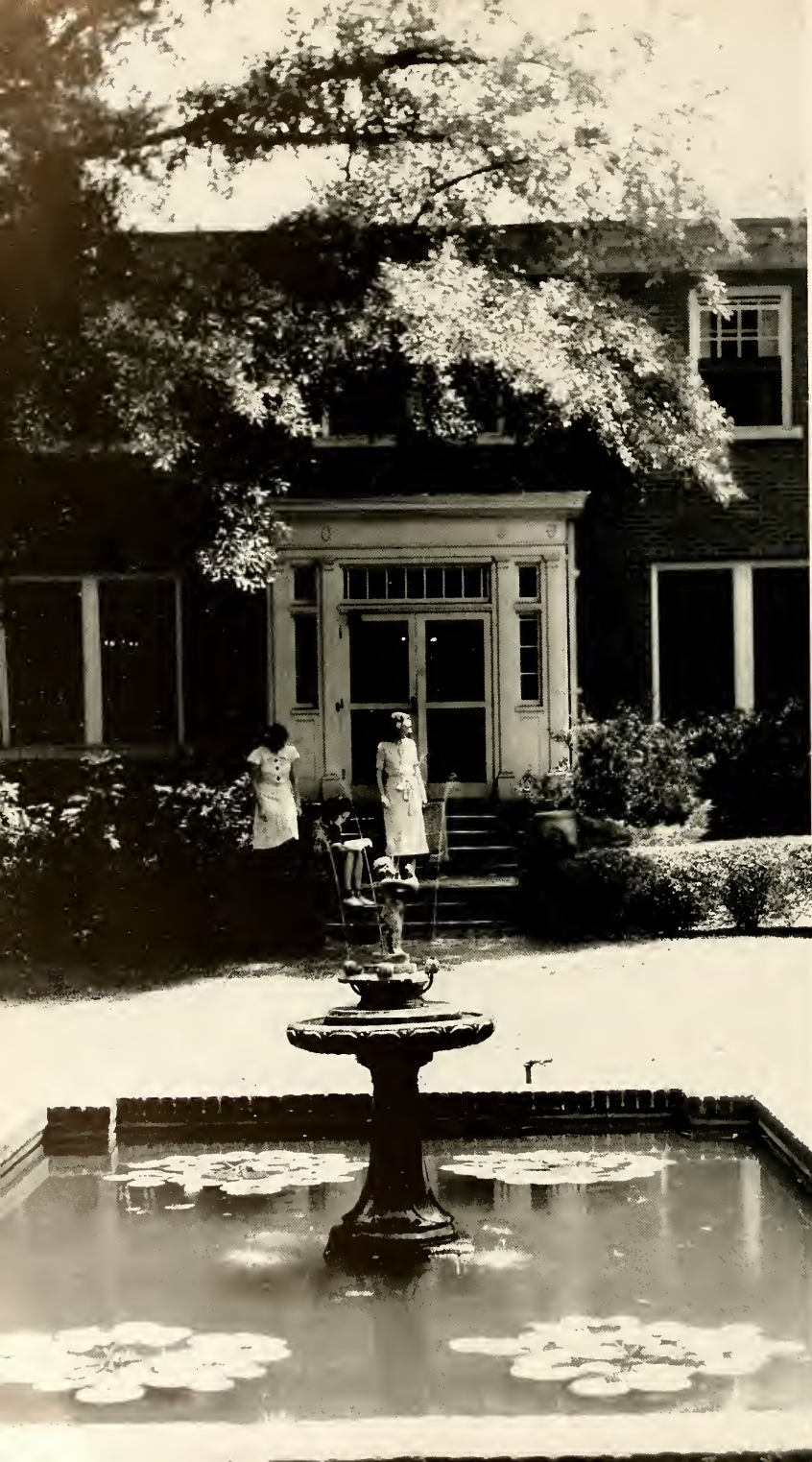
*Buttrick
Hall*





*Main
Building*





*Anna Young
Alumnae House*





*Hennie D. Sumner
Hall*





Gothic Study





*Bultrick
Facade*





*Main Towers
and
Magnolias*





*Rebekah Scott
Hall*





*Carnegie
Library*





*The Entrance
to
Higher Learning*



The Administration

JAMES ROSS McCAIN

PRESIDENT

Dr. McCain, known in Atlanta and in educational circles as an outstanding combination of sincerity, understanding, and ceaseless energy, is responsible for the marked development that Agnes Scott is undergoing at this time. Always occupied, but never too busy for a quiet chat with the students, he welcomes all to his office. This year a special effort was made to meet the freshmen, and the newcomers were delighted to have the opportunity of talking in private with him the opening week of school.

Dr. McCain has been chosen as president of the Southern University Conference and is chairman of the committee on Standards of the Southern Association of Colleges and Secondary Schools. Since he is reticent about acknowledging his honors, we cornered his secretary and learned that he is a member of the advisory committee of the General Education Board of New York, is a senator of the United chapters of Phi Beta Kappa, and has been elected President of the Beta chapter of Georgia. The movement toward the university center in Atlanta is also demanding his attention this year.



Cary Wheeler, senior class president, drops into the Dean's office to discuss Founders' Day plans with Miss Scandrett.



Dean of Women is a formidable title, but Miss Carrie Scandrett's sense of humor and personal interest in every girl are responsible for the waiting line to be found outside of her office at any hour. Equally ready to hear tales of woe or the high lights of last night's date, she has the ability to be a perfect listener and to draw out the most timid freshman. Taking over the heavy responsibility of keeping five hundred girls happy and of urging them on to higher attainments, Miss Scandrett deserves praise for her work this year.



Miss Charlotte Hunter and Mr. S. G. Stukes meet in the daily routine of administration affairs. Miss Hunter has won a following of student admirers in her first year back at her Alma Mater. Mr. Stukes is registrar of the school and dean of the faculty.



The conversation turns to dollars and cents when Mr. R. B. Cunningham and Mr. J. C. Tart get together. Mr. Cunningham is the shrewd business manager, known for his keen sense of humor and his willingness to stop on the quad-rangle for long chats with the students. Mr. Tart, quick-witted and energetic, is efficiency personified in his dealings with patrons of the bank.

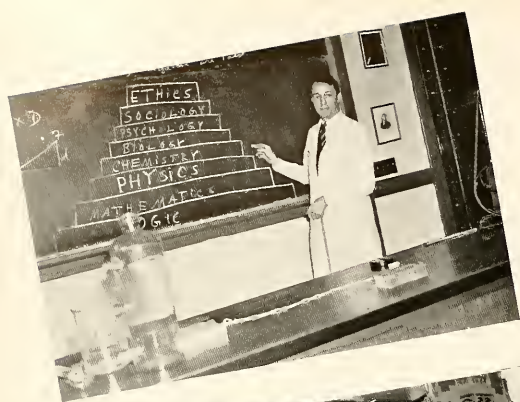
Glimpses at the Faculty

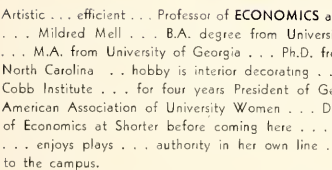
SCHUYLER M. CHRISTIAN . . . Professor of **ASTRONOMY** and **PHYSICS** . . . B.S., M.S., M.A. and Ph.D. degrees from Emory University and Harvard University . . . capable . . . retiring . . . versatile . . . member Sigma Xi and Alpha Chi Sigma, honorary science fraternities . . . hobby is philosophy . . . reads constantly . . . wants to write a book . . . History of Science maybe . . . hates chewing gum . . . writes excellent poetry . . . plays in string ensemble . . . member Southeastern Section of American Physical Society and Georgia Academy of Science . . . started teaching a class in math this year . . . popular . . . primarily a chemist.

First woman to occupy chair of **BIBLE** at Agnes Scott . . . **MRS. ALMA SYDENSTRICKER** has kept her department up to date by travel and study . . . holds M.A. and Ph.D. degrees from Wooster University . . . recently studied at School of Archaeology in Jerusalem . . . member Pi Gamma Mu . . . organized Woman's Synodical of Presbyterian Church in Mississippi and was its president for five years . . . adores Browning and her two sons . . . studies each summer at Chautauqua, N. Y. . . . writes poetry . . . came to Agnes Scott after two years as dean of Juniors and Seniors and teacher of European History at Mississippi State College for Women . . . her ready smile admired by all the students in spite of the six hours required reading each week . . . southern lady.


Born in Laurinburg, N. C. . . . **MARY MacDOUGALL**, head of **BIOLOGY** Department . . . Scotch but not thirty . . . got B.A. degree from Randolph-Macon Woman's College . . . M.S. from University of Chicago . . . Ph.D. from Columbia University, Sc.D. from Universite de Montpellier . . . hobby is gardening . . . likes to see things grow, whether plants, books, or anything . . . really enjoys teaching . . . writing comes next . . . has written fourteen scientific articles . . . has textbook in manuscript form . . . Phi Beta Kappa . . . Sigma Xi . . . member American Society of Zoologists, American Association for Advancement of Science, Georgia Academy, Southeastern Biological Association . . . brilliant . . . analytical . . . admired by everyone . . . interested in languages . . . prefers biographies to modern fiction . . . has gained recognition for her scientific research.

ROBERT B. HOLT . . . head of **CHEMISTRY** Department . . . B.A. from University of Wisconsin . . . M.S. from University of Chicago . . . popular with all the students . . . knows them all by name, as well as their home towns and abilities . . . Phi Beta Kappa . . . member American Chemical Society . . . can be found at golf course or bridge table during his spare time . . . can think from student's point of view . . . hates cities and crowds . . . much prefers quiet of country . . . has wanderlust but it usually leads him to mountains of North Carolina . . . a grand person to know.







Artistic . . . efficient . . . Professor of **ECONOMICS and SOCIOLOGY** . . . Mildred Mell . . . B.A. degree from University of Wisconsin . . . M.A. from University of Georgia . . . Ph.D. from University of North Carolina . . . hobby is interior decorating . . . taught at Lucy Cobb Institute . . . for four years President of Georgia Branch of American Association of University Women . . . Dean and teacher of Economics at Shorter before coming here . . . Phi Beta Kappa . . . enjoys plays . . . authority in her own line . . . a newcomer to the campus.



GEORGE P. HAYES . . . Head Professor of **ENGLISH** . . . B.A. degree from Swarthmore College . . . M.A. and Ph.D. degrees from Harvard University . . . Phi Beta Kappa . . . member Pi Alpha Phi . . . Harvard Club . . . faculty advisor for Pi Alpha Phi on the campus . . . taught for four years at Robert College, Constantinople . . . member of Modern Language Association . . . did guard duty at Ellis Island during war . . . hates bridge . . . fond of good music . . . tennis addict . . . enjoys tramping through woods . . . excellent teacher . . . reads aloud well and enjoys doing it . . . fond of children . . . reads poetry when he takes time from correcting Freshman English themes . . . good natured . . . Seemingly easy going, but knows how to bring out best work.



LUCILE ALEXANDER . . . Professor of **FRENCH** . . . Phi Beta Kappa . . . holds Bachelor of Arts degree from Agnes Scott College . . . M.A. from Columbia University . . . versatile . . . taught Mathematics at Agnes Scott . . . first student to be an assistant in the Chemistry Laboratory . . . now capable teacher of French . . . person of superlative abilities . . . sews well . . . plays piano beautifully . . . has wide awake classes . . . speaks French like a native . . . favorite author is Pascal . . . finds a fascination in mountains and mountain climbing . . . member Alliance Francaise, American Association Teachers of French . . . considerate . . . kind . . . cultured.



MURIEL HARN . . . Professor of **GERMAN** . . . B.A. degree from Goucher College . . . Ph.D. from Johns Hopkins University . . . does many things well . . . an excellent cook . . . keeps house beautifully . . . has traveled widely . . . Phi Beta Kappa . . . plans trip to Mexico this summer . . . will speak only Spanish . . . interested in needlepoint . . . member Modern Language Association . . . reads much history and drama . . . has taught Italian, French, and Spanish as well as German . . . ardent opera goer . . . her Christmas parties are traditions on the campus . . . plays piano well . . . versatile . . . an authority on philosophy.



Unassuming . . . good natured . . . head of GREEK and LATIN Departments . . . CATHERINE TORRANCE . . . majored History and English at University of Chicago . . . M.A. and Ph.D. degrees from University of Chicago . . . never intended to teach . . . member Phi Beta Kappa . . . Eta Sigma Phi . . . Kappa Kappa Gamma . . . always has flowers from her well-tended garden . . . motors quite a lot . . . takes trips each summer with her sister . . . enjoys music . . . always ready to help students with their worries about schedules and hours . . . likes contemporary poetry . . . reads for pleasure in original Greek . . . has visited Greece twice.



Friendly . . . keen sense of humor . . . PHILIP DAVIDSON . . . head of HISTORY Department . . . universally liked . . . B.A. from University of Mississippi . . . M.A. and Ph. D. degrees from University of Chicago . . . Phi Beta Kappa . . . has taught at University of Chicago and University of Illinois . . . spends spare time at woodworking . . . reads on all subjects . . . member of National Nominating Committee of Phi Beta Kappa . . . pet dislike is bad maps . . . invariably ends up by drawing his own . . . member American Historical Society . . . always in demand for campus activities . . . plays tennis well . . . clever bridge player . . . member John Dunning Prize Committee of American Historical Society . . . alert . . . excellent speaker . . . witty . . . member Board of Education Journal of Southern History . . . works hard . . . expects hard work.



Born way out in Montana . . . FLORENCE L. SWANSON, M.D. . . . has B.S. from University of Washington . . . M.D. from University of Oregon . . . spent three years before coming here doing psychiatric work at Sheppard and Enoch Pratt Hospital near Baltimore . . . despises bridge . . . Professor of HYGIENE . . . college physician . . . has class in psychiatry at Emory . . . loves golf, horseback riding, red roses, southern accent, Kirsten Flagstad . . . sympathetic listener to all stories of aches and pains . . . easy going . . . methodical.



Friendly . . . efficient . . . HENRY ROBINSON . . . Head Professor of MATHEMATICS . . . feels it's a men-sized job to teach girls mathematics . . . Bachelor of Science, Civil Engineering, and Master of Arts degrees from the University of Georgia . . . Ph.D. from Johns Hopkins University . . . organized a chapter of B. S. U. on the campus in 1926 . . . hates collecting money, but has to do it just the same . . . Phi Beta Kappa . . . Secretary-Treasurer Mathematics Association of America for the seventh consecutive year . . . plays in college string ensemble . . . Commander 17th Observer Battalion . . . interested in growing nut trees . . . has grove in Hendersonville, N. C. . . alert . . . President of Young Men's Professional Club . . . enjoys keeping up with Department of Agriculture Bulletins . . . likes statistics . . . is always figuring on something . . . keeps Agnes Scott marriage percentage up to date.



SAMUEL GUERRY STUKES . . . dean of faculty . . . Professor of **PSYCHOLOGY and EDUCATION** . . . B.A. from Davidson College . . . M.A. from Princeton University . . . studied for the ministry . . . B.D. from Princeton Theological Seminary . . . amateur photographer . . . member American Association for Advancement of Science, Civitan Club, Mason . . . follows development of aviation with interest . . . formerly a pilot . . . taught aviation during war . . . loves a good joke . . . hearty laugh echoes through the halls . . . registrar—has spent most of his time in the office since he took this position when Dr. McCain became president . . . friendly . . . offers advice to students about schedules, jobs, everything.

Vivid . . . enthusiastic . . . a steady stream of ideas . . . **ARTHUR F. RAPER**, Professor of **SOCIOLOGY** . . . author of *Tragedy of Lynching and Preface to Peasantry* . . . has book on share croppets and tenant farming now in manuscript form . . . keeps in constant touch with current events . . . likes mountain climbing and mountain music . . . quite original . . . earned pin money by cutting hair for students at the University of North Carolina . . . got B.A., Ph.D. there . . . M.A. degree from Vanderbilt University . . . inspiring . . . dynamic . . . not dogmatic . . . gives opinions, but does not require their acceptance . . . developed keen interest in soil and farmers' problems from boyhood on a North Carolina farm . . . thrives on arguments . . . can't lecture without drawing incomprehensible sociological figures on the board . . . sincere . . . a valuable author . . . a thought-provoking professor.

Stately . . . patrician . . . **FRANCES K. GOOCH** . . . head of **SPOKEN ENGLISH** Department . . . dislikes people who try to act and can't . . . Ph.B. degree from University of Chicago . . . M.A. from Graduate Boston School of Expression . . . believes Paul Muni the most capable actor in Hollywood . . . member of Zeta Phi Eta, National Dramatic Society . . . holds up standards of dramatic productions in college . . . consistently hoards old shoes that she will eventually give to Red Cross . . . good taste . . . caused sensation by bobbing her hair . . . member National Education Theater Conference, National Association of Teachers of Speech . . . has been president of the southern division, vice-president of the national . . . hard worker.

MELISSA CILLEY . . . Professor of **SPANISH** . . . received B.A. degree cum laude from University of New Hampshire . . . M.A. degree from the University of Wisconsin . . . has studied at the University of Madrid . . . got degree there . . . in summer teaches at historic University of Coimbra . . . knows her field well . . . has written two textbooks . . . one in Portuguese, one in Spanish . . . used in over ninety-four colleges . . . outlined all literary trends in Portuguese and classified authors . . . has traveled or lived in twenty-two countries . . . makes a hobby of studying people in out-of-way places . . . connected with Spanish research department of Library of Congress . . . member Modern Language Association . . . good natured.



Thinking of orange blossoms, Miss Latimer? . . . And the faculty turned out for their share of the excitement. . . . Can't you take it? . . . The freshmen finally turned Dr. Robinson gray—maybe. . . . Miss Laney smiles hello. . . . Miss Mell and Miss Gaylord chat over the success of the campaign luncheon. . . . Miss Gaylord, Miss Alexander, and Miss Christie don't seem to let committee worries bother them. . . . Mr. Johnson gets his Vitamin D. . . . Miss Carlson gets in her daily dozen. . . . Higher education in a concentrated form.



The 500



Inter-class competition and grievances were forgotten in the enthusiasm of the campus wide campaign.

Senior CLASS OFFICERS

CARY WHEELER
President

MARY WELLS McNEILL
Vice-President

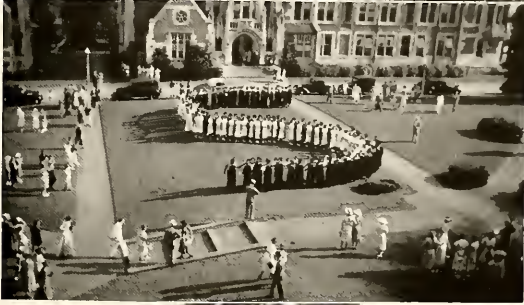
VIRGINIA TUMLIN
Secretary-Treasurer

MR. ROBERT B. HOLT
MISS CHARLOTTE HUNTER
Advisors



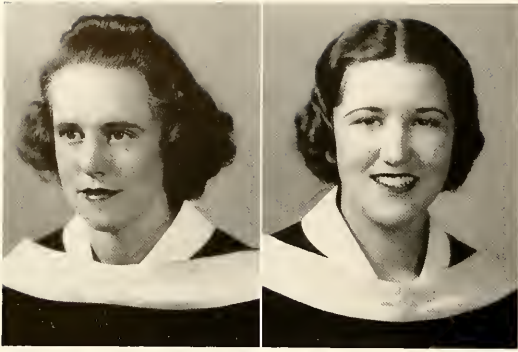


Food! . . . Investiture.
. . . Little Girls' Day.
. . . Class Day. . .
Founders' Day Minuet.



That last fling. . . . Full-fledged seniors at last! . . . Campaign pep. . . . Sarah Christian, class sponsor, with Cary Wheeler, president.





ALICE EMELYN ADAMS
Elberton, Ga.
PSYCHOLOGY

RUTH ALBION
Atlanta, Ga.
HISTORY



MARY RICE ALLEN
Decatur, Ga.
PSYCHOLOGY



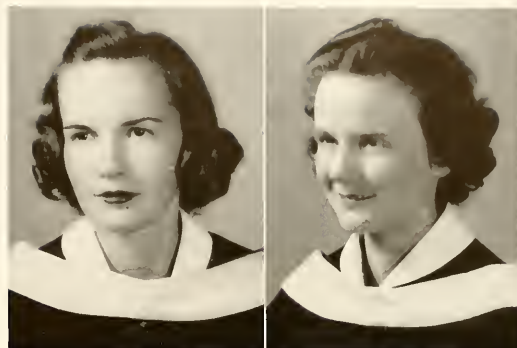
JEAN BAILEY
Atlanta, Ga.
ENGLISH



ADELAIDE BENSON

Jacksonville, Fla.

HISTORY



HENRIETTA BLACKWELL

Laurens, S. C.

ENGLISH



ALICE TARVER CALDWELL

Bristol, Tenn.

HISTORY

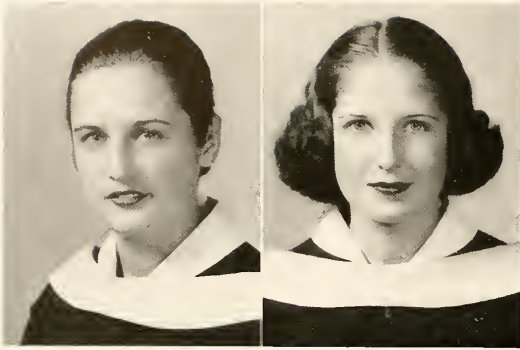


CATHERINE MOBLEY CALDWELL

Winnsboro, S. C.

ENGLISH and FRENCH





RACHEL CAMPBELL
Mansfield, Ga.
SOCIOLOGY

CAROLINE CARMICHAEL
McDonough, Ga.
GREEK



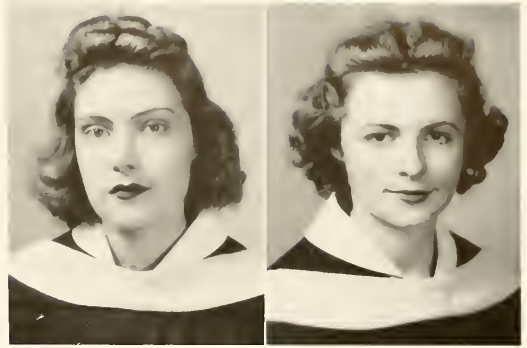
LELIA CARSON
Falling Spring, Va.
ENGLISH and HISTORY



SARAH ELIZABETH CARTER
Bamberg, S. C.
PSYCHOLOGY



JEANNE CODDING
Atlanta, Ga.
BIOLOGY and CHEMISTRY



VIRGINIA COFER
Decatur, Ga.
PSYCHOLOGY and HISTORY

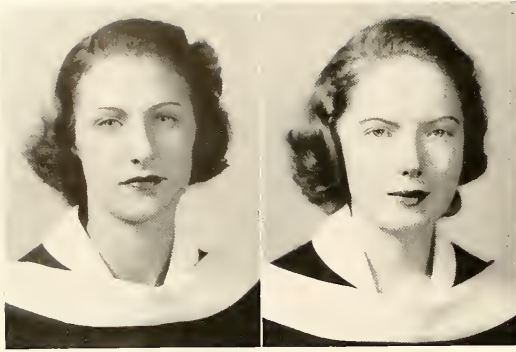


SARAH JOYCE CUNNINGHAM
Atlanta, Ga.
FRENCH



LUCY HILL DOTY
Winnsboro, S. C.
PSYCHOLOGY





JANE LOUISE DRYFOOS
New York City
PSYCHOLOGY

CATHERINE ALBERTA FARRAR
Avondale Estates, Ga.
MATHEMATICS



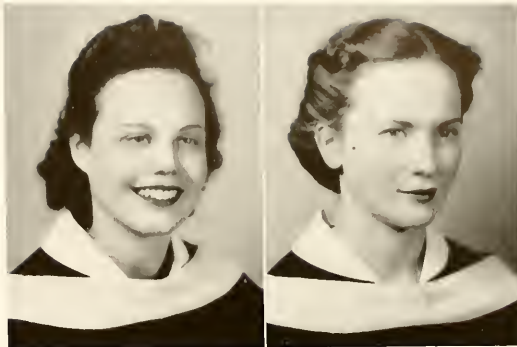
MARY VIRGINIA FARRAR
Manchester, Tenn.
MATHEMATICS and LATIN



MARTHA FITE
Dalton, Ga.
ECONOMICS and SOCIOLOGY



LILLA JEANNE FLYNT
Decatur, Ga.
FRENCH



SUSIE ELIZABETH FURLOW
Atlanta, Ga.
HISTORY and ENGLISH

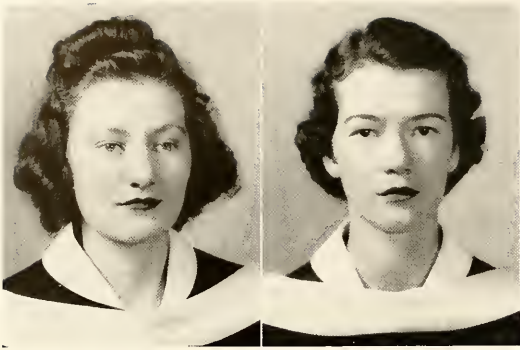


MARY EVERLYN GARNER
Lawrenceville, Ga.
ENGLISH



SUSAN BROOKS GOODWYN
Newnan, Ga.
ENGLISH





DOROTHY GRAHAM
Bluefield, W. Va.
CHEMISTRY and MATHEMATICS

MARY FRANCES GUTHRIE
Louisville, Ky.
MATHEMATICS



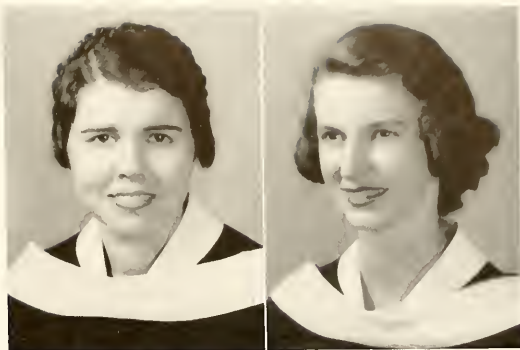
ADELE TURNER HAGGART
Atlanta, Ga.
ENGLISH



JANE MOORE HAMILTON
Dalton, Ga.
HISTORY



EMILY CAROLYN HARRIS
Atlanta, Ga.
CHEMISTRY, ZOOLOGY and GERMAN



JUNE HARVEY
Atlanta, Ga.
ENGLISH

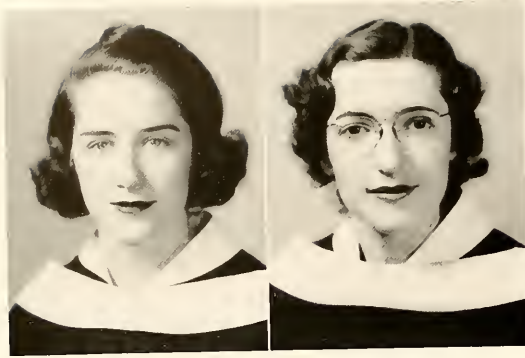


LOUISE JACQUELINE HAWKS
Petersburg, Va.
ENGLISH



RUTH HERTZKA
Atlanta, Ga.
CHEMISTRY





MARY WILLS HOLLINGSWORTH
Florence, Ala.
MATHEMATICS

CORA KAY HUTCHINS
Atlanta, Ga.
CHEMISTRY and BIOLOGY



CATHERINE McCONNELL IVIE
Greenville, S. C.
PSYCHOLOGY



PHYLLIS JOHNSON
Elberton, Ga.
CHEMISTRY



EMMA JANE JONES

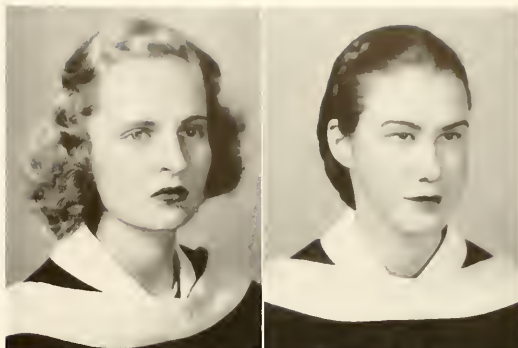
Albany, Ga.

PSYCHOLOGY

KATHLEEN KENNEDY

Fort Sill, Okla.

ENGLISH



ELIZABETH JOAN KENNEY

Charleston, W. Va.

CHEMISTRY

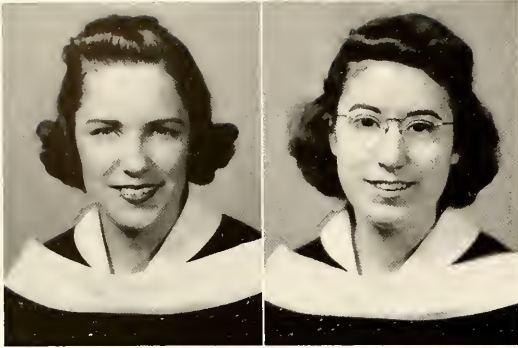


HELEN MARY KIRKPATRICK

Decatur, Ga.

CHEMISTRY





EUNICE ELIZABETH KNOX
Andrews, S. C.
ECONOMICS and SOCIOLOGY

VIRGINIA BELLE KYLE
Huntington, W. Va.
FRENCH



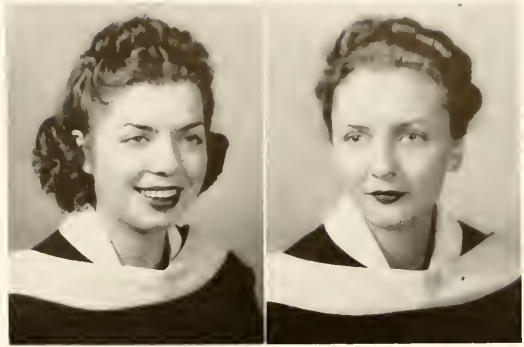
DOROTHY NELL LAZENBY
Decatur, Ga.
ENGLISH



HELEN ELAINE LICHTEN
Atlanta, Ga.
CHEMISTRY



DOUGLAS LYLE
College Park, Ga.
ENGLISH



ELLA HUNTER MALLARD
Greenville, S. C.
ENGLISH

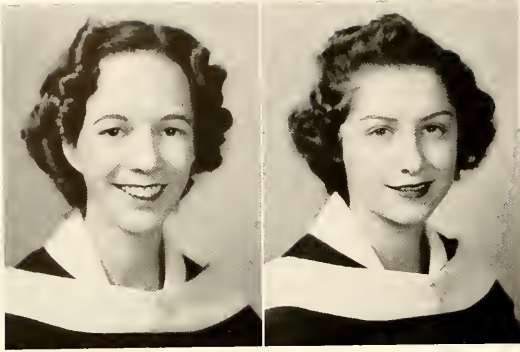


MARTHA HUNTER MARSHALL
Americus, Ga.
HISTORY



MARIE MERRITT
Clarksdale, Miss.
ENGLISH and LATIN



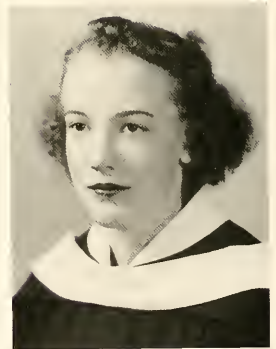


VIRGINIA MORRIS
Decatur, Ga.
MATHEMATICS

HELEN LUCILE MOSES
Sumter, S. C.
HISTORY



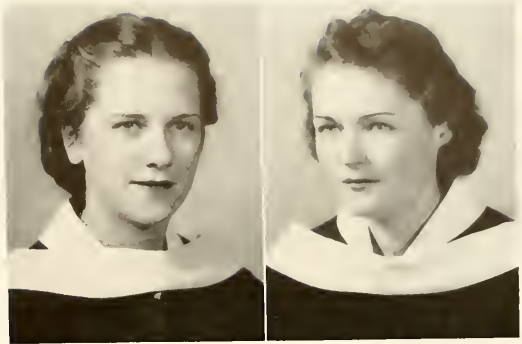
MARY ELIZABETH MOSS
Nashville, Tenn.
HISTORY



SARA LOUISE McCAIN
Sanatorium, N. C.
SOCIOLOGY and ECONOMICS



FLORA MacGUIRE
Montgomery, Ala.
ENGLISH



EMILY MacMORLAND
Alexandria, Va.
HISTORY

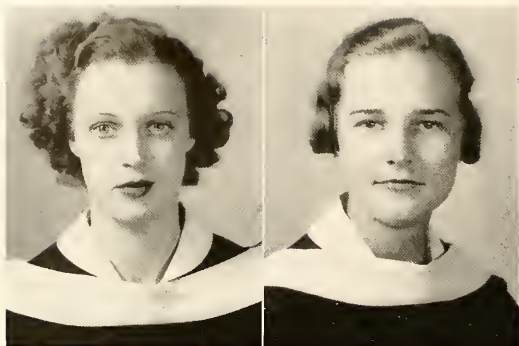


EMMA MOFFETT McMULLEN
Hangchow, China
SOCIOLOGY



MARY WELLS McNEILL
Florence, S. C.
HISTORY





ANNIE HOUSTON NEWTON

Dothan, Ala.

SPANISH

AMELIA TODD NICKELS

Decatur, Ga.

ENGLISH



MARY HILL OATLEY

Atlanta, Ga.

BIBLE



LOU PATE

Newbern, Tenn.

MATHEMATICS



JULIA ANTOINETTE PORTER

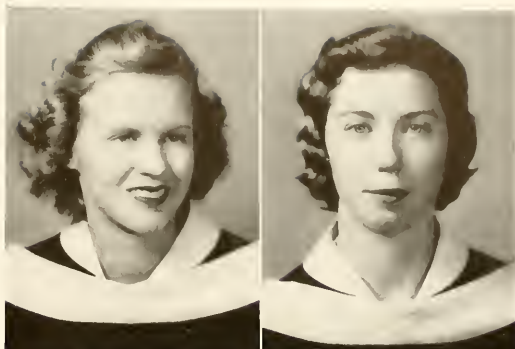
Covington, Ga.

GREEK

BETTY PRICE

Mahwah, N. J.

BIOLOGY and PSYCHOLOGY



MAMIE LEE RATLIFF

Sherard, Miss.

ENGLISH

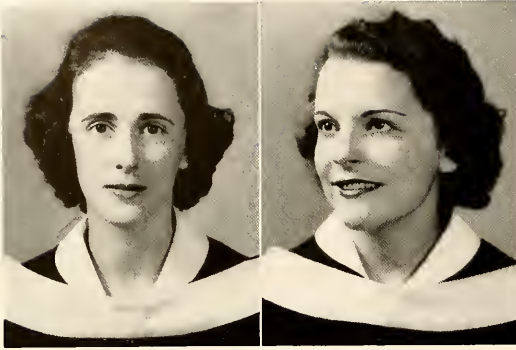


JEANNE WILSON REDWINE

Fayetteville, Ga.

ENGLISH





HATTIE MINA REID
Madison, Ga.
PSYCHOLOGY

MIRIAM ANTOINETTE SANDERS
Greenville, S. C.
SOCIOLOGY and ECONOMICS



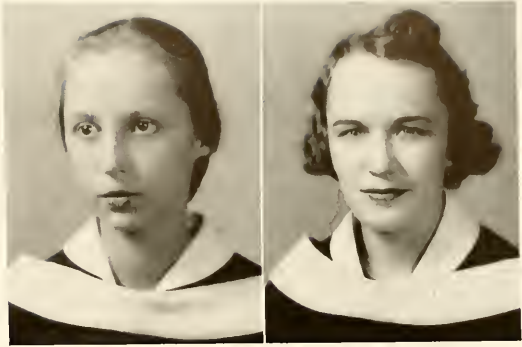
ADELAIDE HAYDEN SANFORD
Mocksville, N. C.
GREEK



EVELYN SEARS
St. Louis, Mo.
ENGLISH



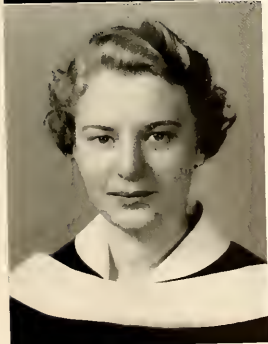
JULIA PATTERSON SEWELL
Atlanta, Ga.
ENGLISH



MARY ELIZABETH SHEPHERD
Atlanta, Ga.
GREEK

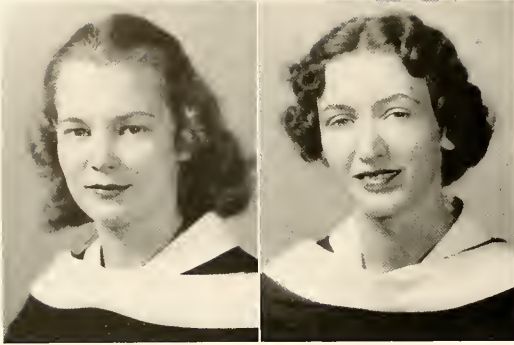


AILEEN SHORTLEY
Columbia, Tenn.
CHEMISTRY



ALICE ANNA SILL
Atlanta, Ga.
BIBLE





MARY PENNEL SIMONTON

Covington, Tenn.

ENGLISH

HELEN NERINE SIMPSON

Atlanta, Ga.

PSYCHOLOGY



JANE KATHERINE SMOLLEN

Atlanta, Ga.

CHEMISTRY



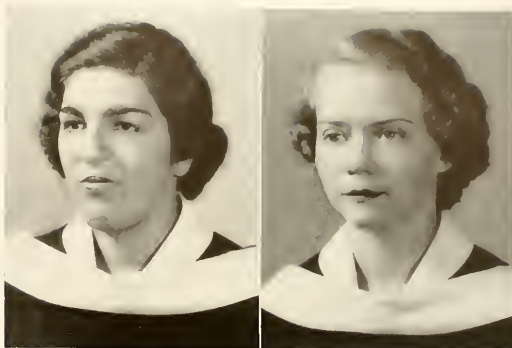
MARY ELEANOR STEELE

Statesville, N. C.

HISTORY



SELMA STEINBACH
Carrollton, Ga.
ECONOMICS and SOCIOLOGY



DOROTHY FRANCES STILL
Decatur, Ga.
CHEMISTRY



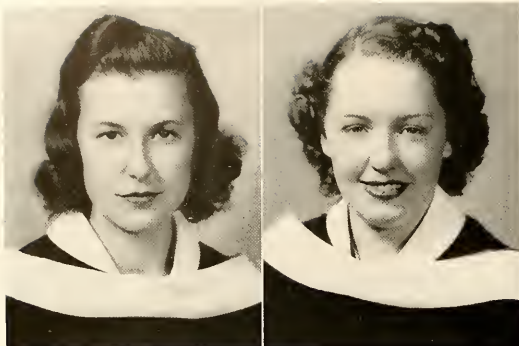
MARY FRANCES THOMPSON
Decatur, Ga.
BIOLOGY



SARAH EVELYN THURMAN
Atlanta, Ga.
SPANISH



65907



KATHRYN PROUT TOOLE
Llewellyn, Pa.
ENGLISH and PSYCHOLOGY

VIRGINIA ELIZABETH TUMLIN
Cave Spring, Ga.
HISTORY



ELINOR RUTH TYLER
Florence, S. C.
HISTORY



FLORENCE FANNON WADE
Cornelia, Ga.
HISTORY





ANN DuPUY WATKINS
Culpeper, Va.
ECONOMICS and SOCIOLOGY



CARY ROGERS WHEELER
LaFayette, Ala.
PSYCHOLOGY



MARY ELLEN WHETSELL
Columbia, S. C.
BIOLOGY



MARGARET EVANS WILLIS
Roanoke, Va.
HISTORY



MARY RUTH WILLIS
Cumming, Ga.
BIBLE



Junior CLASS OFFICERS

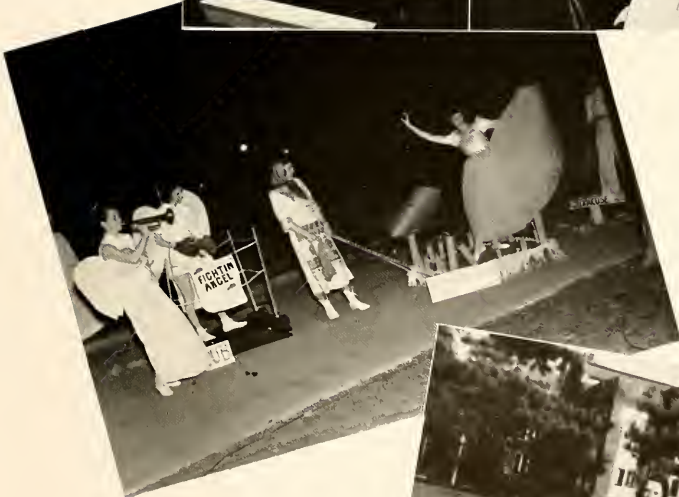
MARY LANG GILL
President

LUTIE MOORE
Vice-President

MARY EVELYN FRANCIS
Secretary-Treasurer

MISS HELEN CARLSON
MISS BLANCHE MILLER
Advisors





"Junior chocolates" bring in the pennies. . . . The junior-sponsored Mardi Gras taxed the campus ingenuity. . . . Second floor Rebekah turns out for the A. A. Fair. . . . The supreme climax comes with the Junior Banquet. . . . Floats file by at Mardi Gras. . . . Incoming campus leaders discuss plans for 1940.





FRANCES ABBOT
Louisville, Ga.

ALICE ELIZABETH ALDERMAN
Atlanta, Ga.

CAROLYN SELENA ALLEY
Dalton, Ga.

GRACE ELIZABETH ANDERSON
Tampa, Fla.

CARRIE GENE ASHLEY
Ellenton, S. C.

BETSY BANKS
Winchester, Tenn.

EVELYN BATY
Birmingham, Ala.

SUSAN COBB BLACKMON
Anniston, Ala.



MARJORIE LOUISE BOGGS
Shreveport, La.

ANNA MARGARET BOND
Atlanta, Ga.

EUGENIA BRIDGES
Atlanta, Ga.

BARBARA LOUISE BROWN
Charleston, W. Va.

MARY VIRGINIA BROWN
Winter Garden, Fla.

MARY KATE BURRUSS
Atlanta, Ga.

MARGARET INEZ CALCUTT
Fayetteville, N. C.

EMILY JEANETTE CARROLL
East Point, Ga.

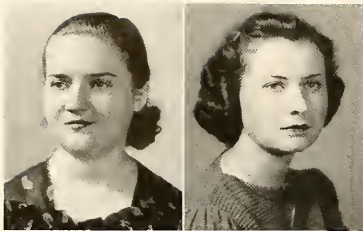
HELEN GATES CARSON
Harriman, Tenn.

ERNESTINE CASS
Atlanta, Ga.

ELIZABETH DAVIS
Atlanta, Ga.

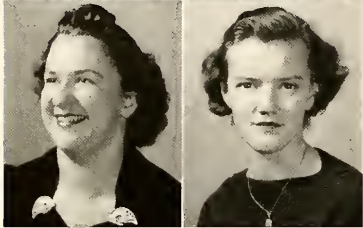
MARY LOUISE DOBBS
Atlanta, Ga.





LILLIE BELLE DRAKE
Union City, Ga.

REBECCA DRUCKER
McCormick, S. C.

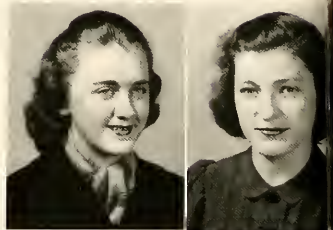


ANNE STEDMON ENLOE
Dillsboro, N. C.

RUTH EYLES
Atlanta, Ga.

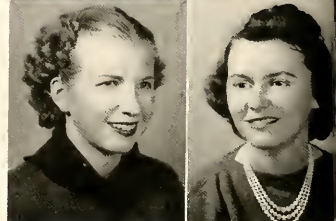
HARRIET CHRISTINE FLORENCE
Cedartown, Ga.

CAROLYN WOOD FORMAN
Birmingham, Ala.



MARY EVELYN FRANCIS
Clearwater, Fla.

ANNETTE FRANKLIN
Statesboro, Ga.



MARIAN FRANKLIN
Swainsboro, Ga.

MARY LANG GILL
Salisbury, N. C.

FLORENCE JOSEPHINE GRAHAM
Bluefield, W. Va.

NETTIE LEE GREER
Atlanta, Ga.

SAM OLIVE GRIFFIN
Decatur, Ga.

WILMA GERTRUDE GRIFFITH
Atlanta, Ga.

POLLY HEASLETT
Birmingham, Ala.

BRYANT LUCILE HOLSENBECK
Atlanta, Ga.

MARGARET JANE HOPKINS
Gainesville, Fla.

ELIZABETH GARY HORNE
St. George, S. C.

LOUISE HUGHSTON
Spartanburg, S. C.

GEORGIA EVERHART HUNT
Atlanta, Ga.





ELEANOR NEWMAN HUTCHINS

Huntsville, Ala.

KATHLEEN JONES

Decatur, Ga.

LENORA JONES

Decatur, Ga.

MILDRED JOSEPH

Jacksonville, Fla.

RUTH KAPLAN

Savannah, Ga.

JANE DAVIDSON KNAPP

Atlanta, Ga.

MARY ELIZABETH LEAVITT

Atlanta, Ga.

SARA ELIZABETH LEE

Live Oak, Fla.



ELOISE LENNARD
Alexander City, Ala.

MARY MATTHEWS
Smyrna, Ga.

VIRGINIA ISABELLE MILNER
Atlanta, Ga.

SOPHIE EARLE MONTGOMERY
Heijo, Chosen

LUTIE TYLER MOORE
Barnesville, Ga.

MARY FRANCES MOORE
Monroe, La.

JULIA WINIFRED MOSELEY
Limona, Fla.

JANE THATCHER MOSES
Chattanooga, Tenn.

BARBARA LEE MURLIN
Atlanta, Ga.

ELOISE BETHEA McCALL
Marion, S. C.

SARA ELIZABETH McCONNELL
Atlanta, Ga.

MARY VIRGINIA McPHAUL
Doerun, Ga.





VIRGINIA McWHORTER
Decatur, Ga.

BETTY JEAN O'BRIEN
Decatur, Ga.

BETH PARIS
Jacksonville, Fla.

KATHERINE LYNN PATTON
Abingdon, Va.

NELL WOODLAND PINNER
Suffolk, Va.

EVA ANN PIRKLE
Atlanta, Ga.

MARGARET RATCHFORD
Sharon, S. C.

MARY COX REINS
College Park, Ga.



ISABELLA PEEBLES ROBERTSON
Concord, N. C.

JANE McCLARY SALTERS
Florence, S. C.

RUTH SLACK
Decatur, Ga.

HAZEL SOLOMON
Macon, Ga.

BETTY ANN STEWART
Winchester, Tenn.

HARRIET NOTTINGHAM STIMSON
Chattanooga, Tenn.

EDITH STOVER
Atlanta, Ga.

LOUISE SULLIVAN
Decatur, Ga.

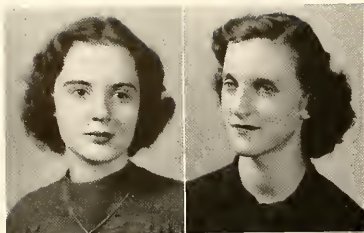
MARY NELL TAYLOR
Atlanta, Ga.

MARY McCULLOCH TEMPLETON
Mooreville, N. C.

HENRIETTA THOMPSON
Atlanta, Ga.

EMILY NANCY UNDERWOOD
Decatur, Ga.



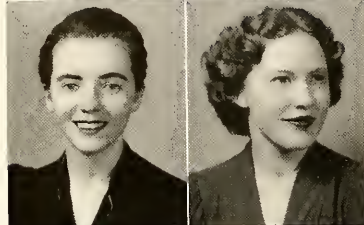


GRACE SARAH WARD

Selma, Ala.

MARY ELLEN WARE

Greenville, S. C.



VIOLET JANE WATKINS

Nashville, Tenn.

ELOISE WEEKS

Atlanta, Ga.



JANE WITMAN

Atlanta, Ga.

FRANCES WOODALL

Blackshear, Ga.



In Memoriam

MISS NANNETTE HOPKINS

MISS MARTHA STANSFIELD

MR. J. K. ORR

Sophomore CLASS OFFICERS

JULIA McCONNELL

President

HELEN KLUGH

Vice-President

ANN HENRY

Secretary-Treasurer

MISS LOUISE HALE
MISS LESLIE GAYLORD
Advisors



Jeanne Allen becomes "Snow White" for the Sophomore-Freshman Stunt night. . . . Sophomores lead the way at Investiture. . . . Flash! The sophomores WIN the student campaign race! . . . Mortar Board entertains the class. . . . What! Bowling too! . . . Sophomore-taxi service at your disposal. . . . Yawns and daisies for the chain. . . . Familiar?





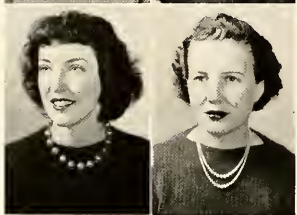
JEANNE ALLEN
Atlanta, Ga.

TONI BERRY ALSTON
Atlanta, Ga.



ANNE ANSLEY
Atlanta, Ga.

RUTH HASTINGS ASHBURN
Winston-Salem, N. C.



MARY JANE BANNISTER
Charleston, W. Va.

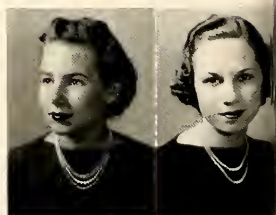
MARY ELIZABETH BARRETT
Gainesville, Ga.

ROWENA MAXWELL BARRINGER
Florence, S. C.

MIRIAM WALKER BEDINGER
Asheville, N. C.

MARY BRAINARD BELL
Shelbyville, Ky.

MARTHA PERKINS BOONE
Elkton, Ky.



FRANCES BREG
Chevy Chase, Md.

RUTH BRODY
Sumter, S. C.

NINA BROUGHTON
Hackensack, N. J.

SABINE ALSTON BRUMBY
Clearwater, Fla.

CHARLENE BURKE
Americus, Ga.

GLADYS CARR
Emory, Ga.

JO CATES
Jackson, Ala.

SUE CLAPP
Atlanta, Ga.

VIRGINIA LAWSON CLOWER
Atlanta, Ga.

HARRIETTE COCHRAN
Atlanta, Ga.

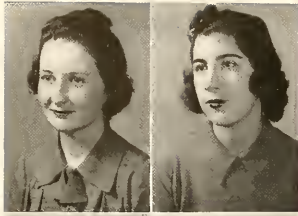
BEVERLY ADAMS COLEMAN
Eastman, Ga.

ALICE SHORTER COMER
Eufaula, Ala.

FREDA GWENDOLYN COPELAND
Brunswick, Ga.

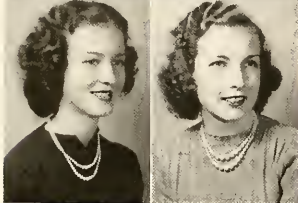
MARY ELIZABETH CULVER
Culverton, Ga.





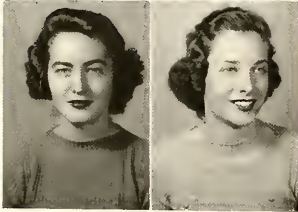
DORIS DALTON
Atlanta, Ga.

JEANNE DAVIDOWITZ
New York City



JEAN DENNISON
Atlanta, Ga.

MARTHA DUNN
Decatur, Ga.



ETHELYN DYAR
Atlanta, Ga.

FLORENCE ELLIS
Monroe, Ga.



BETTY BALL EMBRY
Evanston, Ill.

RUBY LEONE EVANS
Lithonia, Ga.

PEGGY FALKINBURG
Atlanta, Ga.

WINIFRED FINGER
Ripley, Miss.



ANN FISHER
Newport, Tenn.

LOUISE CLAIRE FRANKLIN
Marietta, Ga.

LUCILE TALMADGE GAINES
Anderson, S. C.

GRACE LONDON GOLDSTEIN
Atlanta, Ga.

CAROLINE WILSON GRAY
Winston-Salem, N. C.

FLORRIE MARGARET GUY
Atlanta, Ga.

AGNES ELIZABETH HALL
Atlanta, Ga.

ELIZABETH PENN HAMMOND
Atlanta, Ga.

MODESTA HANCE
Wilmington, Del.

BERYL LUCRETIA HEALY
Chattanooga, Tenn.

EDITH HENEGAR
Copperhill, Tenn.

ANN ADELLA HENRY
Macon, Ga.

REBEKAH HOGAN
Atlanta, Ga.

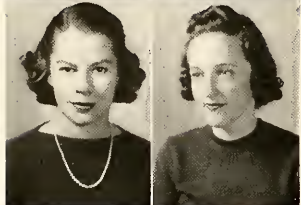
WINSLOW HOWARD
Gaffney, S. C.





ROBERTA HARRIS INGLES
Radford, Va.

MARY DINSMORE IVY
West Point, Miss.



BETSY DANDRIDGE KENDRICK
Suffolk, Va.

HELEN KLUGH
Atlanta, Ga.



ELIZABETH ELLEN KYLE
Huntington, W. Va.

JULIA NEVILLE LANCASTER
Taichow, Ku, China

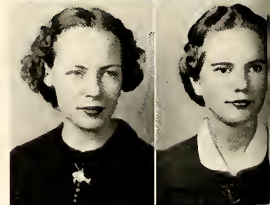
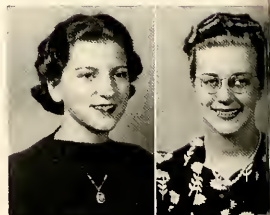


SARA MAYERS LEE
Danville, Ky.

MARGARET LENTZ
Atlanta, Ga.

MARCIA MANSFIELD
Atlanta, Ga.

ANNE FOXSWORTH MARTIN
Marion, S. C.



SARAH BOND MATTHEWS
Lithonia, Ga.

ANNA LOUISE MEIERE
Atlanta, Ga.

MARJORIE MERLIN
Atlanta, Ga.

ANN MILLICAN
Macon, Ga.

GRACE MOFFAT
Scranton, Penn.

MARTHA MOODY
Plant City, Fla.

BETTY MOORE
Talladega, Ala.

NELL MOSS
Decatur, Ga.

MARGARET MURCHISON
Florence, S. C.

MARY LOUISE MUSSER
Charleston, W. Va.

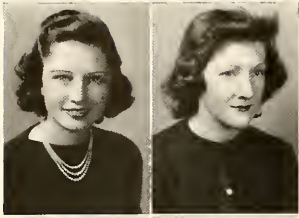
ELLA MOORE MUZZEY
Paterson, N. J.

MAXINE McAULEY
Atlanta, Ga.

JULIA McCONNELL
Talladega, Ala.

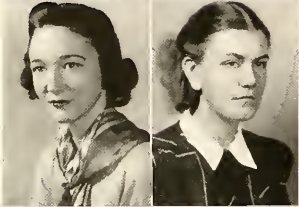
ANN ELIZABETH NEWTON
Forsyth, Ga.





VAL NIELSEN
Evergreen, Ala.

MARY BALL OLIVER
Wellesley Hills, Mass.



JOY O'BRIEN
Atlanta, Ga.

MARTHA BIRCHETT O'NAN
Cropper, Ky.



PATTIE PATTERSON
Charlotte, N. C.

DOROTHY HIGH PETEET
Atlanta, Ga.

MARIAN WALTERS PHILLIPS
LaGrange, Ga.

SUE PHILLIPS
LaGrange, Ga.

BEATRICE PIASSICK
Atlanta, Ga.

GEORGIA STITH POOLE
Mullins, S. C.



MARY CLAY PRICE
Knoxville, Tenn.

SARAH GRAY RAINEY
Decatur, Ga.

KATHERINE RHODES
Estill, S. C.

NELLIE GORHAM RICHARDSON
Washington, Ga.

BETTY ELAINE ROBEY
Decatur, Ga.

ELIZABETH ANNE RUPRECHT
Sanford, Fla.

LAURA WOOD SALE
Atlanta, Ga.

LOUISE SCOTT SAMS
Charleston, S. C.

LILLIAN SCHWENCKE
Thomasville, Ga.

SUSAN SELF
Ninety Six, S. C.

BEATRICE SHAMOS
Decatur, Ga.

GENE SLACK
Decatur, Ga.

ONIE FRANCES SMITH
Ripley, Miss.

ANN NELSON STANSBURY
Chattanooga, Tenn.





NINA MAY SNEAD
Greenwood, S. C.

FRANCES SPRATLIN
Atlanta, Ga.

FRECK SPROLES
Charlotte, N. C.

ARLENE STEINBACK
Carrollton, Ga.

BETTY JANE STEVENSON
Atlanta, Ga.

PEGGY STIXRUD
Luebo, Africa

CAROLYN STROZIER
Baxley, Ga.

ELLEN VEREEN STUART
St. Petersburg, Fla.

ELAINE BROSIUS STUBBS
Fort Myers, Fla.

SHIRLEY GAY SWAGERTY
Atlanta, Ga.

TOMMAY TURNER
Atlanta, Ga.

MARY BON UTTERBACK
Louisville, Ky.

IDA JANE VAUGHAN
Jenkins, Ky.



BETTY ALDEN WAITT
Maxwell Field, Ala.

GRACE NEELY WALKER
Summerville, S. C.

CORNELIA ANNE WATSON
Ridge Spring, S. C.

MARTHA WATKINS
Cedartown, Ga.

DORIS WEINKLE
Atlanta, Ga.

MARGARET WELLS
Cincinnati, Ohio

MARY SCOTT WILDS
Hendersonville, N. C.

VIRGINIA BRITAIN WILLIAMS
Hamilton, Ga.

CORNELIA ROSS WILLIS
Culpeper, Va.

NANCY WILLSTATER
New York City

MARY MADISON WISDOM
Atlanta, Ga.

MARGARET ELIZABETH WOODHEAD
Aiken, S. C.

ANITA WOOLFOLK
Fort Valley, Ga.

LESSIE GLENWYN YOUNG
Atlanta, Ga.



Freshman CLASS OFFICERS

BETTY ANN BROOKS
President

LALLA MARSHALL
Vice-President

FRANCES TUCKER
Secretary-Treasurer

MRS. HARRIETTE HAYNES LAPP
DR. PHILIP DAVIDSON
Advisors



Mary Ellen Whetsell officially welcomes freshmen. . . . Emma McMullen starts freshman orientation. . . . The class scores a hit with a taffy pull. . . .



C. A. tea is one of the many freshman week functions. . . . Freshman spirit seethes at the campaign luncheon. . . . Ya-a! Babies! . . . "Boy Meets Girl" at Mortar Board parties. . . .



Where are the Freshmen, Jane Moore? . . . The Freshmen capture the laurels with their Black Cat stunt.



REBEKAH ANDREWS
Atlanta, Ga.

HARRIETT McGAROCK AYRES
Spring Hill, Tenn.

NANCY JO BALLENGEE
Beckley, W. Va.



AILENE BARRON
Atlanta, Ga.

KATHRYN BENEFIELD
Atlanta, Ga.

JEAN TRENHOLM BEUTELL
Thomasville, Ga.



RUTH McNEILL BIGGS
Lumberton, N. C.

KATHRYN BLAIR
Fort Smith, Ark.

BETTY BLAKE
Miami, Fla.

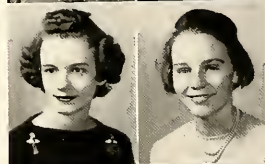
MARY WALKER BLAKEMORE
Emory, Va.

BETTY DAVIDSON BRADFIELD
Charlotte, N. C.



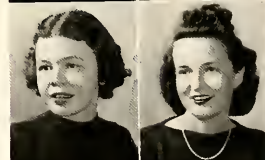
BETTY BROCK
Gadsden, Ala.

BETTY ANN BROOKS
Decatur, Ga.



LAVINIA BROWN
West Union, S. C.

ELEANOR POPE BRYAN
Atlanta, Ga.



MARTHA JANE BUFFALOW
Chattanooga, Tenn.

EDWINA WALKER BURRUSS
Atlanta, Ga.

HARRIET PARRISH CALDWELL
Knoxville, Tenn.

LOUISE CALDWELL
Atlanta, Ga.

EDITH LAWRENCE CANDLER
Decatur, Ga.

MATILDA ROBERTS CARTLEDGE
Williamsville, N. Y.

ANNE CHAMBLESS
Atlanta, Ga.

CATHERINE ELVIRA CHOSEWOOD
Atlanta, Ga.

GEORGIA VAUGHN CLARK
LaGrange, Ga.

BETTY LEE CLARKSON
Atlanta, Ga.

SUSAN ANDERSON COCHRANE
Charlotte, N. C.

MARY ELIZABETH COFFEE
Fitzgerald, Ga.

GERTRUDE COHEN
Atlanta, Ga.

SYLVIA COHN
Moultrie, Ga.

SARAH JUDSON COPELAND
Dalton, Ga.

JANE MARIE COUGHLAN
Jacksonville Beach, Fla.

MAE CRUMBLEY
Atlanta, Ga.

GAY WILSON CURRIE
Haichaw Kiangou, China

EDITH ALLING DALE
Columbia, Tenn.

DARLEEN MAE DANIELSON
Atlanta, Ga.

BILLIE DAVIS
Varzinha, Minas, Brazil

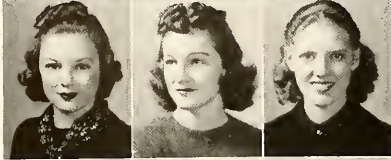




CHARLOTTE JULIA DAVIS
New York City

MARY DAVIS
Newnan, Ga.

DOROTHY DEBELE
Savannah, Ga.



MARTHA SUE DILLARD
Atlanta, Ga.

MARGARET DOAK
Dothan, Ala.

MARY DALE DRENNAN
Fayetteville, Tenn.



CAROLYN DUNN
Donalsonville, Ga.

SUSAN ARNETTE DYER
Petersburg, W. Va.

MARY LIGHTFOOT ELCAN
Bainbridge, Ga.

ELVIRA HOLT ERWIN
Morganton, N. C.

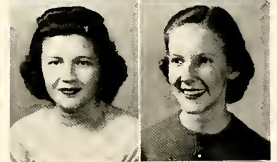
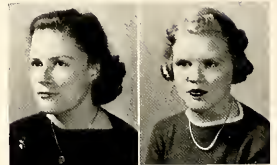
DOROTHY ESTES
Jacksonville, Fla.

MARY MARGARET EVANS
Atlanta, Ga.

MARY ANN FAW
Westfield, N. J.

PATRICIA ROSS FLEMING
Pensacola, Fla.

VIRGINIA SNEAD FRANKLIN
Marietta, Ga.



DOROTHY CECIL GARLAND
Atlanta, Ga.

ANN MORRIS GELLERSTEDT
Atlanta, Ga.

LILLIAN GISH
Memphis, Tenn.

MARGERY ELLEN GRAY
Union, W. Va.

KATHRYN GREENE
Atlanta, Ga.

ADELAIDE GREGORY
Decatur, Ga.

LILLIAN ENLOE GUDENRATH
LaFayette, Ga.

EUGENIA HAILEY
Hartwell, Ga.

MARGARET KIRBY HAMILTON
Marietta, Ga.

JULIA HARRY
Warm Springs, Ga.

MARGARET de LAVALETTE HARTSOOK
Decatur, Ga.

DORIS ELIZABETH HASTY
Thomasville, Ga.

KATHLEEN HEAD
Atlanta, Ga.

SUE HELDMANN
Atlanta, Ga.

JERRY HENDRIX
Atlanta, Ga.

FRANCES HINTON
Oxford, Ga.

KATHLEEN MAVOUREEN HUCK
Atlanta, Ga.

MARY LEE HUMPHRIES
Louisville, Ky.

MARY JANE HUTTON
Drexel Hill, Penn.

ALICE HONE INZER
Gadsden, Ala.

NEVA LAWRENCE JACKSON
Columbia, S. C.

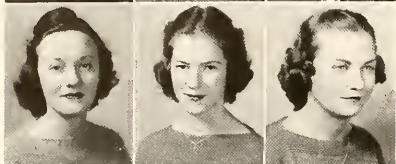




ELIZABETH ANN JENKINS
Hartwell, Ga.

SARAH JOHNS
Atlanta, Ga.

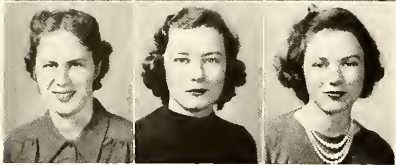
MIRIAM JONES
Okolona, Miss.



SUZANNE KAULBACH
Atlanta, Ga.

MAY KING
Newnan, Ga.

MARY ELIZABETH KIRKPATRICK
Decatur, Ga.



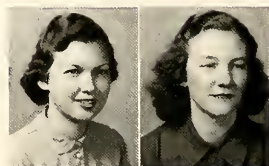
JEANNE LEE
Lake Butler, Fla.

ILA BELLE LEVIE
Montezuma, Ga.

MARY FILLER LEWIS
Atlanta, Ga.

CAROLINE GERTRUDE LONG
Maumee, Ohio

MARY DEAN LOTT
Waycross, Ga.



WALLACE LYONS
Landrum, S. C.

REBECCA McELWANEY
Fayetteville, Ga.



JESSIE MacGUIRE
Montgomery, Ala.

MARJORIE McHAN
Avondale Estates, Ga.



MARY MILDRED McQUOWN
Decatur, Ga.

WINIFRED MANSFIELD
Jacksonville, Fla.

LALLA MARSHALL
Charlotte, N. C.

SARAH AUDRIAN MASSEY
Hahira, Ga.

BETTY MEDLOCK
Decatur, Ga.

TADE SIMS MERRILL
Eufaula, Ala.

CAROLYN MICHAUX
Dillon, S. C.

ISABEL MILLER
Charlottesville, Va.

VIRGINIA MONTGOMERY
Heijo, Chosen

DOROTHY NABERS
Greenville, S. C.

ELISE DURA NANCE
Due West, S. C.

JOSEPHINE ELIZABETH NASH
Huntington, W. Va.

LOUISE NEWTON
Dothan, Ala.

JEANNE OSBORNE
Atlanta, Ga.

MARY LOUISE PALMOUR
College Park, Ga.

FAN OLIVER PITMAN
Lake City, Fla.

IDA CLAIRE PURCELL
Charlotte, N. C.

PRISCILLA REASONER
Bradenton, Fla.

ELIZABETH WOODARD REDMOND
Birmingham, Ala.

THEODOSIA RIPLEY
Atlanta, Ga.

MARTHA ROBERTS
Florence, Ala.





BETTY ROBERTSON
Cleveland, Ohio

MARY ELIZABETH ROBERTSON
Charleston, S. C.

ELIZABETH BOYD RUSSELL
Augusta, Ga.

BARBARA CARR SAN
St. Petersburg, Fla.

EVELYN SAYE
Decatur, Ga.

HELEN SCHUKRAFT
Atlanta, Ga.

EDITH HENRIETTA SCHWARTZ
Sumter, S. C.

MARY JAMES SEAGLE
Lincolnton, N. C.

MYRTLE SECKINGER
Atlanta, Ga.

CHARLOTTE SHEPARD
Opelika, Ala.

MARJORIE MAUDE SIMPSON
Atlanta, Ga.

ELEANOR ELISE SMITH
Asheville, N. C.

RUTH HARMAR SMITH
LaGrange, Ga.

SHIRLEY ANNE SMITH
Louisville, Ga.

REBECCA LAURA STAMPER
Georgetown, S. C.



VIRGINIA WEBB STANLEY
Greenville, Ala.

JACKIE ILLMA STEARNS
Atlanta, Ga.

MARY HELEN STEWART
Winchester, Tenn.

ELEANOR LOUISE STOCKDALE
Decatur, Ga.

CORNELIA STUCKEY
Experiment, Ga.

BETTY SUNDERLAND
Decatur, Ga.

JANE SHANNON TAYLOR
Baton Rouge, La.

MARY OLIVE THOMAS
Auburn, Ala.

MARGARET ELIZABETH THOMPSON
Atlanta, Ga.

FLORENCE REBECCA TIPTON
Dyersburg, Tenn.

MARGARET MARY TOOMEY
Decatur, Ga.

FRANCES OWEN TUCKER
Laurel, Miss.

NELLIE TYLER
Anniston, Ala.

MARGARET ELEANOR WADE
Atlanta, Ga.

LILA PECK WALKER
Charlotte, N. C.

VIRGINIA WATKINS
Clemson, S. C.

ALTA WEBSTER
Homestead, Fla.

DOROTHY WEBSTER
Decatur, Ga.

OLIVIA WHITE
Huntsville, Ala.

ANNIE WILDS
Hendersonville, N. C.

MARION WILLIAMS
Elkton, Ky.

SADA NELL WILLIAMS
Decatur, Ga.

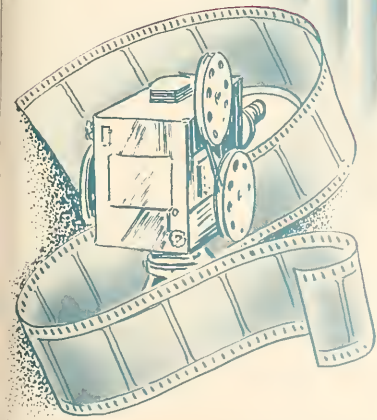
MARY KATHERINE WYLIE
Glen Ridge, N. J.

ELSIE YORK
Atlanta, Ga.

HELEN YUNDT
Lexington, Ky.

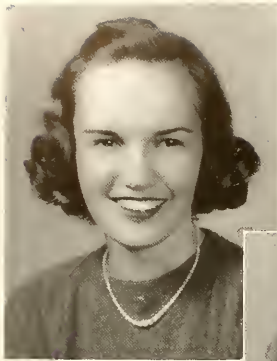




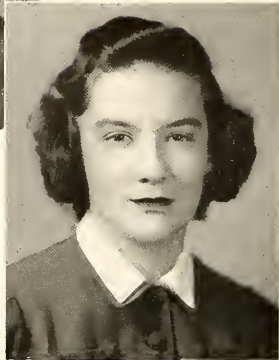


ACTIVITIES

Reel 2



ADELAIDE BENSON
Editor



ANN WATKINS
Business Manager

The 1939 SILHOUETTE

The process of getting out the SILHOUETTE was an apparently endless affair with the day of publication appearing as a mythical date in the future. Starting with views last spring and ending with May Day, Ad Benson, Mutt Fite, and Lutie Moore could be seen tearing across the quadrangle at almost any hour chasing down more pictures. Through the combined forces of a capable staff, we were finally able to make heads or tails out of the accumulated mass of photographs and material and were convinced that we might have an annual after all, in spite of our first doubts on the subject. Pages of copy, scratched through, corrected, and finally typed; the odor of glue; a paper littered floor to provide atmosphere; snapshots every-

Lutie Moore, Flora MacGuire, Ad Benson, and Mutt Fite find that a little work is involved.



ABBOT
MacGUIRE
MUZZEY

BOGGS
B. MOORE
SANFORD

FITE
L. MOORE
SHAMOS

SHORTLEY

WISDOM



ALLEY
LICHTEN

BELL
MOSS

DAVIS
NIELSEN

IVIE
PINNER

KLUGH
SPROLES

where, some masterpieces, others disappointments; editors working furiously trying to get inspired in the midst of the confusion of it all; Hunter Mallard and Lucy Doty pounding on the typewriters; dashes to keep appointments with Mr. Ware or to answer telephone calls from Photo-Process and Foote and Davies; dummies, layouts, and copy sheets everywhere we turned—this was the picture of the annual in the process of its growth.

In the meantime the business staff was having its troubles, but ended the year with an admirable piece of work to its credit and a unique advertisement section to add to the interest of the book.

BUSINESS STAFF

NELL PINNER	Advertising Manager	HELEN KLUGH	Business Assistant
CAROLYN ALLEY	Business Assistant	HELEN LICHTEN	Business Assistant
MARY BELL	Business Assistant	MARY ELIZABETH MOSS	Business Assistant
ELIZABETH DAVIS	Business Assistant	VAL NEILSEN	Business Assistant
CATHERINE IVIE	Business Assistant	MARY FRANCES SPROLES	Business Assistant

EDITORIAL STAFF

LUTIE MOORE	Club Editor
MARTHA FITE	Kodak Editor
FRANCES ABBOT	Sports Editor
HAYDEN SANFORD	Faculty Editor
FLORA MacGUIRE	Photographic Editor
AILEEN SHORTLEY	Feature Editor
BEATRICE SHAMOS	Art Editor
MARY MADISON WISDOM	Class Editor
MARJORIE BOGGS	Organizations Editor
BETTY MOORE	Assistant Club Editor
ELLA MUZZEY	Assistant Kodak Editor
ELLA HUNTER MALLARD	Typist
LUCY HILL DOTY	Typist



Ann applies high pressure to get a big ad.



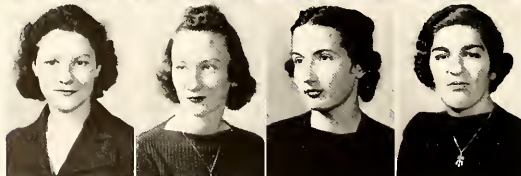
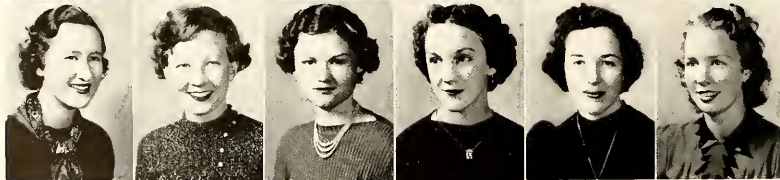
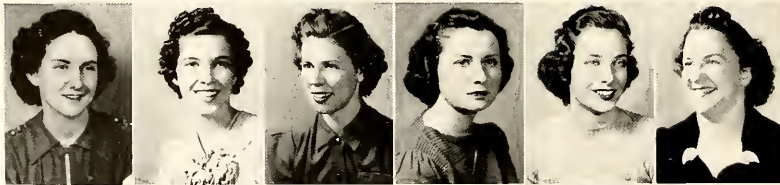
MARY FRANCES GUTHRIE
Editor



Wednesday afternoon—
The News is out.

The AGNES

Life in the newspaper world is a lasting endurance test as the staff members struggle to keep in touch with every phase of campus activity even before it happens. Mary Frances Guthrie and her assistants live in a whirl of rushing to appointments and sometimes are almost convinced that Monday night, when the make-up is done, rolls around more often than once a week. The result of their efforts is worthy of praise from every student for through their work we are able to settle down Wednesday



BATY
HUNT

CARROLL
HUTCHINS
SALTERS

CHEESEMAN
KENNEY
SANFORD

DRUCKER
LENNARD
SOLOMAN

ELLIS
McNEILL
STEINBACH

ENLOE
REINS



MARIE MERRITT
Business Manager

SCOTT NEWS

afternoons to a perusal of the latest news of major affairs of the year, the social gadabouts, current events, and the campus issues at hand ably handled on the editorial page.

This year after published opinions and open forums had given voice to ideas on the subject, the student body voted to change the name of the **Agonistic** to the **Agnes Scott News** in order to provide a clearer name for the publication.



COLEMAN GRAHAM	DOBBS HOWARD	FARRAR MURLIN	FINGER PARIS	GRAHAM SALE
SCHWENCKE	SMITH	STEWART	WATKINS	



JULIA SEWELL
Editor

The AURORA

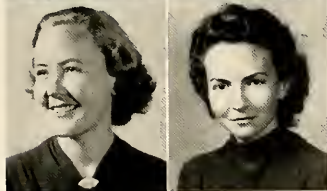
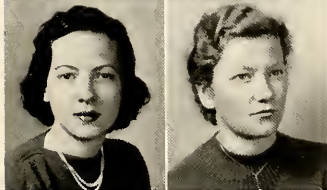
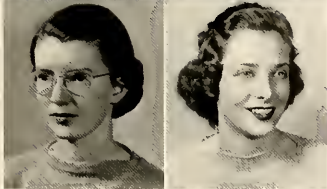
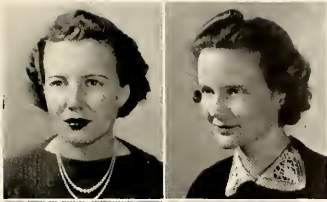


Steele and Julia confer about an ad layout as Betty Embry, Henrietta Blackwell, and Louise Hughston labor over material to be rushed to press.



Pattie Patterson handles the circulation.

An ingenious staff inspired with convention suggestions did wonders to revive the **Aurora** this year, as the school was amazed at the bigger and better and brighter issue that appeared. Striking attention by its brilliant purple cover and enlarged size, the contents kept up with advances in external appearance. Covering a variety of material including the range of short stories, poetry, plays, criticism, and campus comments on various subjects, the magazine offers a field for expression of literary talent. Alice Cheeseman, Mary Clay Price, and Henrietta Thompson succeeded in enlivening the reading material with humorous pen sketches that added much to the interest of the publication.



BARRETT
BRUMBY
EMBRY
HUGHSTON
PATTERSON
VAUGHAN

BLACKWELL
ELLIS
HAMMOND
MATTHEWS
STEVENSON
WEINKLE



MARY ELEANOR STEELE
Business Manager

STAFF

HENRIETTA BLACKWELL	Associate Editor
LOUISE HUGHSTON }	Assistant Editors
MARY MATTHEWS }	
BETTY EMBRY	Freshman Work Editor
BETTY JANE STEVENSON	Book Editor
DORIS WEINKLE	Drama Editor
MARY CLAY PRICE }	Artists
ALICE CHEESEMAN }	
HENRIETTA THOMPSON }	

The Business Assistants include: Florence Ellis, Elizabeth Barrett and Penn Hammond. Pattie Patterson is Circulation Manager, with Sabine Brumby and Ida Jane Vaughan serving as Assistants.



Julia "pokes around" at Bowen Press.



June Harvey, vice-president, Helen Kirkpatrick, president, and Claire Wilson, secretary and treasurer, manage day student affairs.

Mary Ellen welcomes Mary Jeanne McKay, national president of N. F. S. A.



MARY ELLEN WHETSELL
President

STUDENT GOVERNMENT ASSOCIATION



EMMA McMULLEN
Vice-President



HENRIETTA THOMPSON
Secretary



CAROLYN FORMAN
Treasurer

The year's work of the Executive Committee got off to a fast start with a retreat at the recently acquired Harrison Hut. Here on the week-end before school opened, it decided to base the nine months' program on the fourth ideal as stated in the handbook, which deals with "the development of charming personalities, with such qualities as attractive appearance, poise, dignity, restraint where proper, frankness, simplicity and avoidance of extremes." Miss Hale handled the subject beautifully in a chapel talk in September. At a later date Walter Paschal, news commentator for the Atlanta **Journal**, discussed "Keeping up with the world" as that part of the fourth ideal which



BAILEY
KIRKPATRICK

BREG
LYLE

CALDWELL
MacGUIRE

DENNISON
MONTGOMERY

FISHER
STIMSON

HEASLETT
TAYLOR

HOLLINGSWORTH
WADE

includes the "maintaining of an educated and rational viewpoint toward the social and economic world of today." Under the direction of Emma McMullen, freshman orientation got under way as junior sponsors acquainted their proteges with the aims and ideals of Agnes Scott and dashed them off to the round of teas and receptions.

Harriet Stimson directed Honor Week in November with speakers selected from the faculty, the alumnae, and the student body.

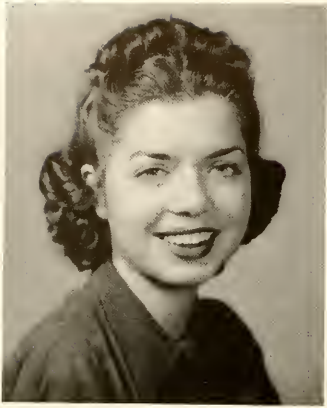
During the Christmas holidays Mary Ellen Whetsell and Henrietta Thompson attended the N. S. F. A. annual convention held this year at Purdue University in Lafayette, Indiana. At this time Mary Jeanne McKay was re-elected as the National President of the organization and later in the year the campus was honored with a visit from her.

During the spring strains of "Deep Purple" or "My Heart Belongs to Daddy" could be heard flowing from the Murphy Candler Building for Student Government sponsored the purchase of a new RCA Victor with all of the latest records. The building has turned into a jitterbug paradise.

In April the 18th Annual Congress of the Southern Federation of College Students and Publication Representatives was held in Charleston, South Carolina, with the Citadel cadets as hosts. Mary Ellen Whetsell was chairman of the woman's division and was accompanied by Henrietta Thompson and Carolyn Forman.

Lou Patc, student treasurer, and Ruth Eyles, assistant treasurer, are the financial braintrusts.





DOUGLAS LYLE
President

The CHRISTIAN ASSOCIATION

Beginning the year with a new name and a broader organization, the Christian Association united the religious forces of the campus in an effort to strengthen the spiritual life of the students. The theme for the year was, "I am come that they might have life and that they might have it more abundantly."

Programs and activities had the common aim of finding the abundant life for ourselves and for all people through a growing knowledge of God.

The cabinet and the newly created council led the activities to promote development toward "the abundant life." Under the leadership of Henrietta Blackwell spiritual growth was encouraged by daily morning watch services and the new student-published devotional booklet.

Weekly chapel programs with faculty and outside speakers were directed by Jane Moses, who also arranged for musical programs. This year Dr. John McSween of Chester, South Carolina, was invited to hold the week of special services.



MAMIE LEE RATLIFF
Vice-President



SOPHIE MONTGOMERY
Secretary



KATHERINE PATTON
Treasurer

THE COUNCIL

Back row, left to right: Grace Ward, Mamie Lee Ratliff, Sara McCain, June Harvey, Eleanor Tyler, Alice Sill, Betty Alderman, Miss Carlson, Douglas Lyle, Alice Cheeseman, Sophie Montgomery, Harriet Stimson. Front row: Henrietta Blackwell, Katherine Patton, Carrie Gene Ashley, Ann Chambless, Louise Hughston, Evelyn Baty, Virginia Cofer, Tine Gray, Grace Walker, Sam Olive Griffin, Peggy Stixrud, Cary Wheeler, Betty Kyle, Selma Steinbach, Missing from picture: Miss Louise Hale and Mr. Schuyler Christian, advisors: Kay Kennedy, Jean Redwine, Mary Reins, Jac Hawks, Mary Ellen Whetsell.





un and carefully laid plans resulted at the September retreat.

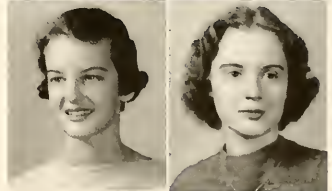
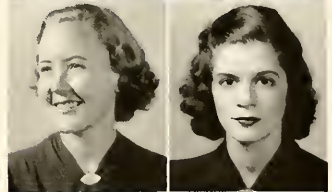
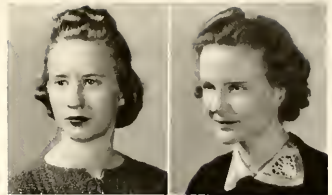
and its ACTIVITIES

Louise Hughston led the Christian World Community Group in its discussions on peace, race, and industry. They met with prominent speakers and foreign students, and had an all-day retreat with the Atlanta Industrial Girls' Club. Grace Ward's Social Service Group worked with local welfare organizations and gave a Christmas party for Decatur poor children, directed by Selma Steinbach.

The Mission Interest, with Sam Olive Griffin as Chairman, did a commendable piece of work in the Syrian Chapel in Atlanta. They were fortunate in hearing several missionaries speak, including our own, Miss Emily Winn, who was on furlough this year.

Tine Gray managed all teas, picnics, and parties for students and visitors. Betty Alderman informed the campus through monthly bulletins about our work and plans, and Grace Walker kept us in contact with national Y. W. C. A.

Freshman and sophomore cabinets, headed by Anne Chambless and Betty Kyle, helped to carry out the search for the abundant life.



ALDERMAN
GRAY
HUGHSTON
WALKER

BLACKWELL
GRIFFIN
MOSES
WARD

WHETSELL

MORTAR BOARD

Our Hoac chapter of the National Mortar Board is one of the integrating forces for campus organizations, for it is comprised of seniors elected on the basis of outstanding leadership, scholarship, and service. In September at the retreat at Harrison Hut enthusiastic plans were made for a service program. The highlight of the year and the major project was the \$40,000 campaign led by Amelia Nickels and Dr. Davidson, which exceeded all expectations. There were dates from Emory and Tech and the Seminary and good times in store for freshmen and sophomores at the December and January parties. After the Junior Banquet coffee was served in the Murphy Candler Building before the Blackfriars' play drew the crowd to the gym. A social usage test taken by the majority of the student body stirred up heated discussion and showed the need for study in the rules of etiquette. Marriage classes for seniors were enthusiastically supported in the spring. Mortar Board had a gay week-end in Athens when they went to participate in the installation of the Parthenian chapter at the University.



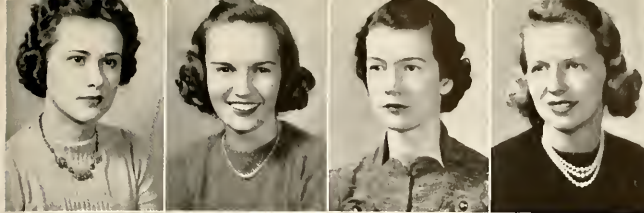
Mortar Board files across the colonnade to participate in the recognition service.



During the social usage tests, students strained to recall what their mothers had taught them.



Freshmen and sophomores tried their skill at shuffleboard at the parties given in their honor.

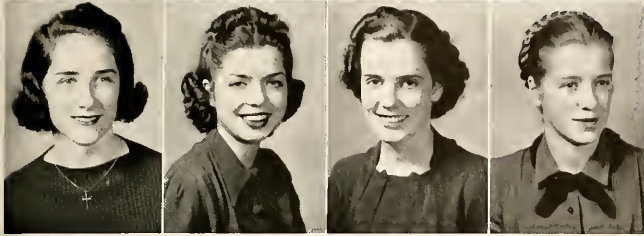


JEAN BAILEY

ADELAIDE BENSON

MARY FRANCES GUTHRIE

JANE MOORE HAMILTON



MARY HOLLINGSWORTH

DOUGLAS LYLE

MARIE MERRITT

EMMA McMULLEN



AMELIA NICKELS

MAMIE LEE RATLIFF

MARY ELLEN WHETSELL



Amelia and Dr. Davidson were still exuberant after the campaign luncheon.



Mortar Board officers take time out in the book store. They are Amelia Nickels, president; Marie Merritt, vice-president; Emma McMullen, secretary; Mary Hollingsworth, treasurer; Jean Bailey, quarterly correspondent.



Mrs. Sydenstricker leads a discussion.

BIBLE CLUB

Bible Club meetings are open to the entire student body, for they play a part in leading the spiritual development of the students. Although the membership is composed of all who are interested, the new constitution drawn up this year states that the officers are required to be Bible majors or minors.

The faculty advisors, Mrs. Alma Sydenstricker and Dr. J. T. Gillespie, lend their influence in obtaining well-known speakers for the monthly meetings of the club. Two of the visitors have been Mr. Toni Moto, Emory Theological student, and Miss Emily Winn, Agnes Scott's missionary to Korea, who is in the United States on furlough. Often instead of formal addresses, there are informal talks on subjects pertinent to the group. The January, February, and March meetings featured a series of stimulating discussions on "Faith, Hope, and Love, the Triad of Life."

Members in picture: Standing, left to right: Mary Ruth Wills, Mrs. Sydenstricker, Isabella Robertson, Jacqueline Hawks. Seated: Catherine Farrar, Miriam Bedinger, Louise Sullivan, Mary Hill Oatley, Helen Simpson, Mary Allen, Polly Ware, Alice Adams, Jeanette Carroll, Louise Musser, Sam Olive Griffin, Mary Mac Templeton, Beth Paris, Jane Salters, Jo Cates, Julia Lancaster, Dr. J. T. Gillespie.

Missing from picture: Alice Caldwell, Mary Elizabeth Chalmers, Beverly Coleman, Virginia Farrar, Sara McCain, Margaret Ratchford, Selma Steinbach, Peggy Stixrud, Frances Woodall, Susan Self.

Beth Paris, vice-president; Jane Salters, secretary; Jacqueline Hawks, president; Jo Cates, treasurer, and Julia Lancaster, corresponding secretary, lead Bible Club affairs.



BLACKFRIARS

Aspiring actresses take their first step toward success by trying out for membership in Blackfriars, the dramatic club, for here the girls get the taste of grease paint and feel the glare of footlights in their eyes. Talent is developed at the monthly meetings where one act plays are directed and participated in by the students. Ordinarily the club is able to present three major plays for the public, but this year there were five.

The Blackfriars' season started with the hit production "Stage Door" by George Kaufman and Edna Ferber. The cast included thirty persons among whom Jeanne Flynt, Susan Goodwyn, and Evelyn Sears handled the leading roles superbly. The night of the Junior Banquet was climaxed by Evelyn Baty's excellent translation from Spanish of Sierra's "Dream of an August Night." Jeanne Flynt, Alice Adams, Laura Sales, Evelyn Sears, and Helen Moses were the principal characters. "The Green Vine" was chosen for the spring play in which Laura Sales, Margaret Hopkins, Evelyn Sears, and Helen Moses had the leads. "Just Women" was presented for the purpose of raising funds for the college campaign. "Bridal Chorus" was put on by the Blackfriars alumnae at commencement as part of the semi-centennial celebration.

Members: Standing: Mary Pennel Simonton, Evelyn Sears, Margaret Hopkins, Julia Sewell, Louise Musser, Alice Cheeseman, Georgia Hunt. Seated: Nancy Willstater, Jean Bailey, Jeanne Flynt, Susan Goodwyn, Mary Frances Sproles, Florence Ellis, Elizabeth Barrett, Lillian Schwencke, Gay Swagerty, Ella Muzzey, Ruth Brody.

Members not in picture: Alice Adams, Eugenia Bridges, Caroline Carmichael, Jane Dryfoos, Marian Franklin, Caroline Grey, Kay Kennedy, Mary W. McNeil, Helen Moses, Jeanne Redwine, Laura Sales, Gene Slack, Kay Toole.



Jeanne Flynt, the president; Margaret Hopkins, secretary; Penny Simonton, vice-president, and Evelyn Sears, treasurer, prepare for the next scene.



Blackfriars members get practical experience in preparing for the major productions of the season.



Henrietta Blackwell, president, relates an amusing incident from a new short story to Cornelia Willis, secretary-treasurer.

B . O . Z .

It is quite obvious that B. O. Z. acquired its name from Dickens' nom de plume, and that the group is made up of students who are interested in creative writing. What is less obvious to the casual campus observer is the true value of this small organization. Concrete evidence of its work may be found in every issue of the *Aurora*, the quarterly literary magazine. The club is proud of the work of its alumnae and is basking in the reflected glory of Evelyn Hanna, author of *Blackberry Winter*.

The writing of the members is not confined to one field, for plays, essays, short stories, and monologues roll off their pens with seemingly equal facility. These literary endeavors are read and criticized at the meetings through the discussions of the members and Miss Janef Preston, faculty advisor. Girls in B. O. Z. find that they acquire standards of criticism which help them in judging the works of other writers as well as their own.

Members in picture: Cornelia Willis, Betty Jean Stevenson, Sophie Montgomery, Virginia Williams, Sabine Brumby, Julia Sewell, Henrietta Blackwell, Miss Janef Preston, Violet Jane Watkins, Sam Olive Griffin, Douglas Lyle.

Members not in picture: Cora Kay Hutchins, Jean Bailey.



Douglas Lyle holds the attention of the group as she reads her latest contribution.



Members discuss a recent scientific discovery.

CHI BETA PHI

Chi Beta Phi, the national honor society of chemistry, mathematics, physics, biology, and psychology established its first woman's chapter at Agnes Scott in 1933. The membership is composed of science majors whose work has met a high scholarship requirement. Elections are held twice a year and the events are celebrated at a banquet in the fall and a picnic in the spring. Dr. Justin Andrews, Assistant of Protozoology at Johns Hopkins, and Dr. Kracket, Professor of Medical Technology at Emory, were among the interesting speakers participating in the programs this year.

During the Christmas holidays a convention was held at Ashland, Virginia, at which the Society undertook to revise their constitution. The two changes made at the time which most affected the Agnes Scott chapter included the dropping of the last Greek letter Sigma from the name of woman's division, and the adding of psychology as a field for membership.

Members in picture, left to right: Mary Eleanor Steele, Virginia Milner, Phyllis Johnson, Carolyn Forman, Polly Heaslett, Olive Rives, Dorothy Graham, Emily Harris, Lou Pate, Miss Philippa Gilchrist, Cora Kay Hutchins, Jean Codding, Mary Ellen Whetsell, Mary Elizabeth Leavitt, Elizabeth Kenney, Helen Kirkpatrick, Aileen Shortley, Helen Lichten, Mary Hollingsworth, Ann Watkins.

New members, not in picture: Ruth Eyles, Susie Blackmon, Jeanette Carroll, Freda Copeland, Jean Dennison, Marian Franklin, Louise Meiere, Mary Frances Moore, Betty Price, Ruth Slack, Jane Smollen, Arlene Steinbach, Dorothy Still, Harriet Stimson, Mary Frances Thompson, Emily Underwood, Eloise Weeks.

Officers of Chi Beta Phi glance up for a moment during a busy lab experiment. Left to right: Jean Codding, vice-president; Cora Kay Hutchins, president; Elizabeth Kenney, treasurer; Dorothy Graham, recording secretary; Emily Harris, corresponding secretary.





Cotillion pauses between records for a bite of refreshments.

COTILLION CLUB

It is a welcome relief after a hard afternoon of work in the lab to retreat to the Murphy Candler Building to dance to the latest hit tunes played on the new victrola and to nibble at the array of delicious refreshments. This is the privilege which Cotillion Club enjoys every other Thursday. At the meetings several girls serve as hostesses and do their part in providing an hour or two of entertainment that will push books into the background for a while.

Cotillion Club sponsors the two big dances of the year at Thanksgiving and Founders' Day on February 22nd with music furnished by local orchestras. This year the jitterbugs and the Lambeth Walkers held sway as upperclassmen and freshmen alike endeavored to pick up the latest steps.

Aileen Shortley, president, and Val Nielsen, secretary-treasurer, dance to the strains of "Stardust," as Eloise Lennard, vice-president, listens.



Members: Frances Abbott, Jeanne Allen, Grace Elizabeth Anderson, Harriett Ayers, Elizabeth Barrett, Rowena Barringer, Charlene Burke, Frances Butt, Caroline Carmichael, Alice Comer, Margaret Doak, Lucy Hill Doty, Jane Dryfoos, Caroline Dunn, Florence Ellis, Mary Evans, Jeanne Flynt, Mary Lang Gill, Eugenia Hailey, Jane Moore Hamilton, Margaret Hamilton, Penn Hammond, Mary Hollingsworth, Catherine Ivie, Jane Jones, Elizabeth Kenney, Kay Kennedy, Sara E. Lee, Eloise Lennard, Douglas Lyle, Martha Marshall, Eloise McCall, Tade Merrill, Helen Moses, Jane Moses, Annie Houston Newton, Louise Newton, Marian Phillips, Sue Phillips, Nell Pinner, Julia Porter, Miriam Sanders, Frances Sproles, Virginia Tumlin, Cary Wheeler, Mary Ellen Whetsell, Margaret Willis.

CURRENT HISTORY FORUM

Current History Forum is a comparatively new group on the campus for it was formed only last year by the uniting of International Relations Club and the Citizenship Club. In carrying out its aim, that of the creation of intelligent understanding of current affairs, the meetings feature open forums and outside speakers.

The group has covered a range of activities this year. It presented radio programs on which Miss Harn, Miss Smith, and Dr. Davidson spoke. It assisted Emory and Georgia Tech in sponsoring the Institute of Citizenship, and it sent Elinor Tyler as the delegate to the Southeastern Division of I. R. C. held this year at William and Mary.

Members: Standing: Elinor Tyler. Seated, left to right: Mary Pannel Simonton, Miss Florence Smith, Lou Pate, Douglas Lyle, Ella Hunter Mallard, Sara Carter, Mary Allen, Jane Salters, Helen Lichten, Violet Jane Watkins, Jean Bailey, Mary M. Templeton, Mary Eleanor Steele, Betty Jean O'Brien, Mary Wells McNeill. On floor: Elizabeth Furlow, Selma Steinbach, Beth Paris, Carrie Gene Ashley.

Missing from picture: Alice Caldwell, Lelia Carson, Martha Dunn, Catherine Farrar, Florrie Guy, Mary Elizabeth Moss, Nell Moss, Sarah Rainey, Betty Jane Stevenson, Virginia Tumlin.



Jane Salters, secretary-treasurer, and Elizabeth Furlow, vice-president, assist Elinor Tyler, the president, as she posts the latest news bulletin.



Elinor Tyler leads a discussion on the European crisis.



The officers pause for the moment to pose for their pictures. They are: Marie Merritt, president; Virginia Farrar, sergeant-at-arms; Eva Ann Pirkle, corresponding secretary; Mary E. Chalmers, recording secretary; Evelyn Baty, vice-president; Georgia Hunt, treasurer.

ETA SIGMA PHI

A desire for a more complete knowledge of the classics unifies Eta Sigma Phi members into an interested group that delves into the glories of the past. The campus is fortunate to be able to include this national honor society in its ranks.

Miss Lewis was chosen as one of the guest speakers for the year to lecture on "Classical Art." The freshmen who were interested in the classics were entertained at a tea in October. Miss Annabel Horn, teacher of Latin at Atlanta Girls' High School, also spoke during the year. Plato and Aristotle might have been a trifle bewildered to see their followers banqueting at the Candler Hotel and chatting about the latest song hits. Eta Sigma Phi mem-

bers thrive on their share of social life as well as on enlightening talks on philosophy. After the banquet the members were glad of the opportunity to hear Dr. Evangeline Papageorge of Emory.

Members: Standing, left to right: Georgia Hunt, Betty Jean O'Brien, Caroline Carmichael, Julia Porter, Harriette Cochran, Mary Ruth Wills, Sarah Joyce Cunningham, Rebekah Hogan, Doris Dalton. Seated, back row: Hayden Sanford, Anne Enloe, Eva Ann Pirkle, Evelyn Baty. Seated, front row: Ruth Ann Byerly, Violet Jane Watkins, Virginia Farrar, Mary E. Chalmers, Marie Merritt.

Missing from picture: Carolyn Forman, Sam Olive Griffin, Eleanor Hutchens, Jane Moses, Henrietta Thompson, Anita Woolfolk.



Gothic architecture forms the background for Eta Sigma Phi members.



Jeannette Herenger talks on the beauties of southern France and shows pictures of "la belle France."

FRENCH CLUB

There seems to be no limit to the variety and number of activities in which Le Cercle Francais takes part to further student knowledge of the French language and literature. The Agnes Scott French Club boasts of its affiliation with the National Alliance Francais, which is known throughout the entire country for its work.

This year the group has been exceptionally fortunate in having the exchange student from Grenoble, France, Jeannette Hérenger, as a member. Miss Phythian, who has just returned from two years' study in France, has done much toward making the meetings interesting and instructive.

In November the new members were welcomed with a picnic supper at Harrison Hut. The Guignol Punch and Judy show is as quaint as France itself, and is an annual event anticipated with enthusiasm. At the March meeting, before André Maurois appeared on the campus, Mon. Courtois, Atlanta representative of the French Line Company, spoke to the club about the famous biographer.

Members: Standing: Harriet Stimson, Marian Phillips, Mary Louise Dobbs, Ella Muzzey, Mary Reins, Ruth Kaplan, Lutie Moore. Seated, on back row: Jeannette Hérenger, Miss Lucile Alexander, Barbara Lee Murlin, Julia McConnell, Mary Kate Burruss, Ruth Eyles, Jeannette Carroll, Betsy Banks, Rebecca Drucker, Mary Evelyn Francis, Betty Jean O'Brien, Grace Moffat, Jeanne Flynt, Marjorie Boggs, Gary Horne, Adelaide Benson. Seated on floor: Grace Goldstein, Betty Alderman, Frances Alston, Gay Swagerty, Nancy Wimpfheimer, Frances Breg, Grace Walker, Sarah Joyce Cunningham, Mary Elizabeth Leavitt, Sabine Brumby.

Missing from picture: Evelyn Baty, Susie Blackmon, Catherine Caldwell, Elizabeth Davis, Mary Lang Gill, Louise Hughston, Catherine Ivie, Dorothy Lazenby, Eloise McCall, Hazel Solomon, Betty Jane Stevenson, Virginia Tumlin, Claire Wilson.

Officers: Betty Alderman, vice-president; Grace Moffat, treasurer; Ruth Kaplan, secretary; Jeanne Flynt, president, converse together in French.





German songs echo through the Murphy Candler once a month.

GERMAN CLUB

German Club, composed of students particularly interested in improving their conversational knowledge of the language, fosters many annual traditions long remembered by Agnes Scott alumnae. The campus is particularly aware of the organization at Christmas, for the approach of the season always brings Miss Harn's party with its candle-lighted tree and German cakes and cookies. The night before the holidays the group adds to the Yuletide spirit by going from dormitory to dormitory singing German carols.

Several of the meetings have been made unusually interesting by the presence of native Germans. At one time the girls visited at the home of Frau Heege, an honorary member. Dr. Adolphe Lapp, who recently came to this country from Bavaria, talked on European conditions.

Elinor Tyler, treasurer; Emily Harris, president; Nell Pinner, secretary, and Cora Kay Hutchins, vice-president, pause between classes to discuss the afternoon meeting.

Members: Standing, left to right: Nell Pinner, Penn Hammond, Virginia Milner, Rebecca Drucker, Marion Williams, Ruth Kaplan. Seated, left to right: Elinor Tyler, Cora Kay Hutchins, Glenwyn Young, Dorothy Lazenby, Virginia Kyle, Evelyn Sears, Emily Harris.

Missing from picture: Elizabeth Kenney, Mary Elizabeth Moss, Molly Oliver, Betty Price, Penny Simonton, Helen Simpson, Selma Steinbach, Emily Underwood, Florence Wade, Nancy Willstatter.



GLEE CLUB

No other groups on the campus afford more pleasure to the entire college community and to the individual participants than do the Choir, Glee Club, and Special Chorus. Under the training of Mr. Johnson, the College Choir, with over a hundred voices, presented an annual concert with an impressive program of carols and Christmas music.

The Glee Club centers its interest in the presentation of a Gilbert and Sullivan opera. This spring it gave "The Gondoliers," at the Atlanta Woman's Club, as well as on the Agnes Scott campus. The Special Chorus, which is a group made up of carefully selected voices, is kept busy filling requests to sing at banquets and meetings in Atlanta.

This year the Agnes Scott College Choir was in charge of one of the Sunday afternoon programs in the series of musicals presented at the Atlanta City Auditorium.

Members: Henrietta Blackwell, Martha Buffalow, Jeannette Carroll, Jo Cates, Alice Cheeseman, Freda Copeland, Margaret Drake, Grace Duggan, Florence Ellis, Mary Ann Faw, Anne Fisher, Caroline Gray, Sam Olive Griffin, Margaret Hartsook, Jac Hawkes, Jane Jones, Dorothy Lazenby, Jeanne Lee, Eloise McCall, Grace Moffat, Betty Nash, Louise Newton, Molly Oliver, Pattie Patterson, Isabella Robertson, Edith Schwartz, Lillian Schwencke, Gene Slack, Rebecca Stamper, Virginia Stanley, Harriet Stimson, Gay Swagerty, Emily Underwood, Annie Wilds, Mary Scott Wilds.



Jeannette Carroll, vice-president; Virginia Kyle, president; Annie Houston Newton, business manager; Sara McCain, librarian; Betty Kyle, secretary-treasurer; rehearse for a chapel program.



Bright costumes and gay songs delighted the audience at "The Gondoliers" performance.



Ellen Stuart, vice-president; Martha Marshall, president, and Mary McPhaul, secretary-treasurer, take time out for the pause that refreshes.

GRANDDAUGHTERS CLUB

Granddaughters Club, whose members are the daughters of Agnes Scott alumnae, is one of the few purely social organizations on the campus. This year the group gallivanted around to a wiener roast at the new Harrison Hut, a steak supper at Ruth Slack's home, and a picnic at Florrie Guy's. The gala event of the year was the annual banquet which was held in April. There were flowers and candlelight, and after the dinner practically the whole group went to a show in Atlanta.

Members: Florence Ellis, Martha Fite, Carolyn Forman, Susan Goodwyn, Penn Hammond, Leonora Jones, Kathleen Jones, Marcia Mansfield, Sarah Matthews, Jane Moses, Katherine Patton, Julia Sewell, Ruth Slack, Gene Slack, Mary Scott Wilds, Annie Wilds, Mary Davis, Alice Inzer, Mary L. Palmour, Billie Davis, Betty Medlock, Margaret Thompson, Jane Taylor, Jeanne Redwine, Florrie Guy, Fan Pitman, Martha Marshall, Mary McPhaul, Ellen Stuart, Louise Sams.



Granddaughters discuss their dates for the spring banquet.



K. U. B. keeps up with the newspaper world.

K. U. B.

K. U. B., the journalistic organization, is one of the largest and most active clubs. Regular meetings are held once a month in the Murphy Candler Building with Miss Christie acting as advisor. At one meeting Dr. Davidson spoke on "The History of the American Press." Later James Pope, of the Atlanta **Journal** staff, discussed "The Foreign Situation and the Press." In April the members went on a tour of the **Journal** plant where they saw the principles of journalism, which had been dealt with in meetings, put into operation.

K. U. B. does not confine its activities strictly to journalism, but branches off three times a year into the social world. In the fall it entertains with a reception for the freshmen who are interested in literary work. In December there is a Christmas party, and in May the activities are wound up with a luncheon in Atlanta.

K. U. B. is responsible for the home town newspaper reports of its Agnes Scott students, for the club has assumed the function of being campus reporters to keep the local newspapers well informed. Reports of extra-curricula activities are sent twice a year and on special occasions.

Members: Standing: Mary Louise Dobbs, Eleanor Hutchens, Sara M. Lee, Jean Dennison. Seated: Ann Watkins, Hazel Solomon, Jeannette Carroll, Violet Jane Watkins, Cornelia Willis, Louise Franklin, Betty Jean O'Brien, Anne Enloe, Miss Christie.

Missing from picture: Carrie Gene Ashley, Evelyn Baty, Sabine Brumby, Catherine Caldwell, Virginia Clower, Rebecca Drucker, Martha Fite, Catherine Ivie, Penn Hammond, Polly Heaslett, Eloise McCall, Hayden Sanford, Susan Self, Gene Slack, Selma Steinbach, Violet Jane Watkins, Jane Witman.

Eleanor Hutchens, second vice-president; Anne Enloe, president; Rebecca Drucker, vice-president; Violet Jane Watkins, secretary-treasurer, pore over reports to be mailed to home town newspapers.





Lecture Association lays final plans for the Maurois lecture and rejoices over its success in this year's choice of speakers.

LECTURE ASSOCIATION

Lecture Association, made up of a faculty committee led by Miss Laney, and of a student committee headed this year by Kathleen Kennedy, keeps the campus in contact with notables of world wide fame. This year has been outstanding in the history of the organization, for it has brought three splendid speakers to the campus. Dr. Edgar Goodspeed, noted Bible scholar, started the season November tenth with his talk "Four Hundred Years with the English Bible."

In February, Maurice Hindus spoke to a spellbound audience on the state of affairs in Czechoslovakia.

André Maurois, who has been widely acclaimed for his biographies, was the final speaker of series. He discussed "French Wit in English and American Humor."

Elizabeth Kenney, treasurer, and Kathleen Kennedy, chairman, read the latest reports on Maurice Hindus.

After each lecture the students and Atlanta visitors had the opportunity of talking to the famous personalities at receptions held in the Murphy Candler Building.

Members: Standing, left to right: Anne Enloe, Elizabeth Kenney. Seated, left to right: Helen Lichten, Florrie Guy, Miss Emma May Laney, Kathleen Kennedy, Evelyn Baty, Lutie Moore, Grace Ward.

Missing from picture: Val Nielsen, Betty Waitt, Mary Louise Palmour.



PEN AND BRUSH CLUB

Artistic talent is given a chance for expression in the congenial atmosphere of Pen and Brush Club. Here hidden talents are brought forth, and practice in sketching and painting results in admirable material for display at the end of the year. It is through the work of this organization that the campus is kept art-minded.

The meetings, which are held twice a month, are open to everyone and are well worth attending. During the year Mr. Roton of the **Constitution** spoke on "The Various Types of Newspaper Photography," Miss Lewis lectured on "Modern Art"; and on one occasion Miss Abel, known under the pen name of Lanier Bradfield, was the guest of honor. At other meetings the group sought out natural settings in the woods as subjects for their sketches.

In the spring the college community had the opportunity of seeing the tangible result of the efforts of Pen and Brush Club, for there was an exhibition in the library of the members' own work. Here we were grateful for the chance to admire the paintings of the group displayed to advantage.

Members: Standing: Patsy Fleming, Ruth Slack, Lillie Belle Drake, Dorothy Lazenby, Alice Cheeseman, Margaret Hartsook, Margaret Hamilton, Martha Dunn, Adele Haggart. Seated: Glenwyn Young, Ruth Smith, Henrietta Thompson, Mildred Joseph, Julia Moseley, Mary Reins, Betty Medlock, Beatrice Shamos.

Missing from picture: Jeanne Allen, Susie Blackmon, Carolyn Forman, Eleanor Hall, Mary Clay Price, Harriet Stimson, Peggy Willis.



Susie Blackmon, secretary-treasurer, and Adele Haggart, president, sketch in the Alumnae garden.



Pen and Brush Club takes time out from their work in the May Day Dell to pose for Mr. Ware.



Lelia Carson, vice-president; Ernestine Cass, treasurer, and Ann Henry, secretary, listen attentively as Margaret Hopkins, president, tells the highlights of the Baton Rouge tournament.

PI ALPHA PHI

Pi Alpha Phi members have the ability to combine hard work with entertainment in order to turn out the stimulating debates of which the organization is well able to boast. Under the capable direction of Dr. George P. Hayes, the group debates a large number of outside teams as well as opposing sides within the club.

This year the Agnes Scott team composed of Marjorie Merlin and Margaret Hopkins opposed William Beers from Dublin, Ireland, and Tom Williams from Cardiff, Wales, on the subject, "Resolved that the British Empire is an obstacle to world peace." The English debate is fast growing into an annual event that is looked forward to with keen expectancy among the students.

This year for the first time Agnes Scott sent delegates to the tournament held at Baton Rouge, at which all of the southern states were represented. From Baton Rouge Margaret Hopkins and Marjorie Merlin went to New Orleans to encounter Sophie Newcomb.

It has always been evident that Agnes Scott teams were formidable opponents for anyone, but the custom, inaugurated this year, of having decision debates verified the fact. The success of the group in outside debates may be largely attributed to the excellent practice received in the meetings. This year a tournament was held within the club with faculty members acting as judges.

Members: Marjorie Merlin, Beatrice Piassick, Arlene Steinbach, Ernestine Cass, Helen Moses, Margaret Lentz, Jane Taylor, Margaret Hopkins, Lelia Carson, Mary Louise Dobbs, Katherine Patton, Mary Frances Guthrie, Mary Madison Wisdom, Ann Henry, Virginia Milner, Doris Weinkle.

Members not in picture: Jean Beutell, Susie Blackmon, Eugenia Bridges, Lavinia Brown, Jane Coughlan, Mary Elkan, Suzanne Kaulbach, Eloise Lennard, Ida Belle Levie, Mary Dean Lott, Mary McQuown, Martha Moody, Louise Musser, Pattie Patterson, Mary Olive Thomas, Jane Witman.



Margaret Hopkins defends her side in a heated inter-club debate.



Poetry Club enjoys tea as Jane Salters reads selections aloud.

POETRY CLUB

Life at Agnes Scott may be busy and scheduled, but it is not too packed for some talented few to meet once a month at Miss Laney's apartment to read and discuss their attempts in the realm of poetry. Sometimes the verses receive the searching comment, "But is it poetry?"; but, often there is hard earned and greatly appreciated praise from Miss Laney and the group.

The club's chief function is that of encouraging creative writing of verse, but at the meetings the members learn much about standards of criticism which will give them a keener appreciation of poetry after their college days are over.

We see tangible evidence of the work of the Agnes Scott Muses in every issue of the **Aurora**, sometimes in translations from Latin and Greek poets, but usually in original verses.

Members, left to right: Christine Florence, Pattie Patterson, Mary Matthews, Miss Emma May Laney, Jane Salters, Margaret Lentz, Violet Jane Watkins.

Missing from picture: Cora Kay Hutchins.

V. J. Watkins, president, and Peggy Lentz, secretary-treasurer, find the quadrangle inviting.





Betsy Banks and Mary Virginia Brown entertain with a Spanish dance.

SPANISH CLUB

The aim of Spanish Club is to create interest in the Spanish language and in the people who speak it. The club is unusually fortunate in having as its faculty advisor Miss Melissa Cilley, who has spent several years in Spain, teaching in Madrid and studying the customs and habits in the picturesque country. She has brought back costumes, games, and ideas which have made the monthly meetings a source of entertainment and educational value. This year there was a Spanish peasant supper down at Harrison Hut, and at Christmas the group enjoyed a party with "fortune cake" and "piñata."

One of the meetings had its serious side as the club sponsored a tea for Teresa Palmies, a Spanish student who has been traveling in this country to raise funds for the orphaned civil war victims. Miss Lewis gave an enlightening talk on Spanish art later in the year.

Nell Pinner, vice-president; Sara E. Lee, treasurer; Sarah Thurman, president, and Mary Virginia Brown, secretary, are blown by November gales.

Members: Standing: Adele Haggart, Hazel Solomon, Sarah Thurman, Betsy Banks, Mary Virginia Brown, Lillie Belle Drake, Sara E. Lee, Sarah Joyce Cunningham. Seated: Douglas Lyle, Martha Watkins, Grace Elizabeth Anderson, Nell Pinner, Miss Cilley, Jeanne Redwine.

Members not in picture: Jo Cates, Betty Kyle, Toni Newton, Pattie Patterson, Mary Nell Taylor, Virginia Tumlin, Frances Woodall.



STRING ENSEMBLE

String Ensemble was organized six years ago by Mr. C. W. Deickmann, and the group has won acclaim under his able direction. It has the unique distinction of being the only unorganized club on the campus, for attendance is entirely voluntary. Anyone who enjoys playing a string instrument may receive the benefit of practice and instruction under Mr. Deickmann, who not only arranges most of the orchestrations used by the String Ensemble, but often composes delightful pieces of his own for them to play.



Mr. Deickmann directs the String Ensemble.

Members: Violins: Miss Florence Smith, Mrs. Henry A. Robinson, Miss Mary Torrence, Dr. Schuyler M. Christian, Phyllis Johnson, Carolyn Strozier, Isabella Robertson, Mary Reins, Ann Gellerstedt, Alta Webster, Florence Graham, Betsy Banks, Frances Hinton. Viola: Dr. Henry Robinson. Cello: Miss Nell Chamblee. Harp: Olive Mae Rives. Piano: Marie Merritt, Mary Frances Moore, Ida Jane Vaughan, Jeanne Lee.



Chapel goes lock forward to String Ensemble programs.

HONOR ROLL

Left to right, first row: Jean Bailey, Emily Harris, Cora Kay Hutchins, Virginia Kyle, Marie Merritt, Lou Pate, Mamie Lee Ratliff.

Second row: Sarah Thurman, Elinor Tyler, Mary Ellen Whetsell, Betty Alderman, Evelyn Baty, Ruth Eyles, Mary Matthews.

Third row: Sophie Montgomery, Lutie Moore, Eva Ann Pirkle, Jane Salters, Violet Jane Watkins, Sabine Brumby, Sara Lee.

Fourth row: Pattie Patterson, Beatrice Shamos, Arlene Steinbach, Betty Jane Stevenson, Mary Bon Utterbach.



PHI BETA KAPPA



CORA KAY HUTCHINS

LOU PATE

MARIE MERRITT

SARA THURMAN

MARY ELLEN WHETSELL



SPONSORS

ALLEY
BOND
ENLOE
HUNT
LEAVITT
MCORE
PATE
SULLIVAN

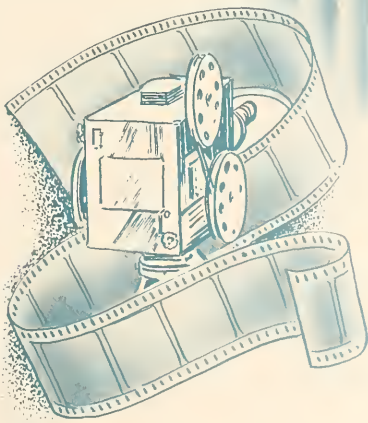
ANSLEY
BROWN
FRANKLIN
HUTCHINS
LEE
MOORE
PATTON
TAYLOR

ASHLEY
CARROLL
GILL
JOSEPH
MATTHEWS
MURLIN
PINNER
UNDERWOOD

BANKS
CASS
GREER
KARLAN
MCCAIN
OATLEY
PIKLE
WARD

BATY
DOBBS
GRIFFIN
KNAPP
MCMAUL
O'BRIEN
SIMONTON
WARE

BLACKMON
DRUCKER
HOPKINS
KNOX
MONTGOMERY
PARIS
SLACK
WEES



ATHLETICS

Reel 3



Buchser Scott
Gymnasium

ATHLETIC

The Athletic Association not only promotes interest in athletic and recreational activities, but also provides a social program for the campus. It is the aim of A. A. to encourage each girl to strive for "physical efficiency, scholarship, good fellowship, and sportsmanship." This is done by making the A. A. calendar vital as well as interesting to each student.

The Association started out the year with a bang when it held the most spectacular fair that Agnes Scott has ever had the opportunity of attending on the campus. Colorful booths and exciting games drew crowds, flags waved in the breeze, the hockey field was littered with paper streamers and pink lemonade and candied apples were much in evidence. A barrel formed the entrance, so faculty and all were forced to get down on their hands and knees to gain admittance to the brilliant array inside of the ropes. The old and new sport fashion show, the bingo boards, the merry-go-round, and the jitterbug exhibit ending in a campus-wide Lam-

- JANE MOORE HAMILTON
President
- VIRGINIA MILNER
Secretary
- MARY BELL
- ERNESTINE CASS
- ALICE CHEESEMAN
- BERYL HEALY
- ELEANOR HUTCHINS



ASSOCIATION

both Walk were only a few of the attractions.

This year A. A. decided to pep up campus dates. Several open houses were sponsored with everyone competing at badminton, ping-pong, bowling, darts, horseshoes, or at bridge for those of the less athletic natures. Jane Dryfoos reports that on the opening night the freshman classes of Agnes Scott, Emory and Tech were the honor guests.

G. A. F. C. W. met at Agnes Scott this year for a big birthday party with Virginia Milner presiding as president. This organization was founded on our campus in 1930 through the efforts of Miss Wilburn.

Invitations to the final Athletic Association banquet, held in May, were issued to members of sport clubs, class teams and May Day participants. At this time the retiring Board turned their duties over to the 1939-1940 Board and awarded the yearly trophies. The banquet marked the perfect ending of a great year and the fresh beginning of another.



JANE DRYFOOS
Vice-President
RUTH SLACK
Treasurer
JANE JONES
NELLIE RICHARDSON
MARY ELEANOR STEELE
MARY NELL TAYLOR
MARY SCOTT WILDS





OUTING CLUB

Outing Club specializes in week-end trips and out-door suppers and breakfasts. Members of this group are ready to "get up and go" whenever the opportunity is offered.

Members: Adelaide Benson, Mary V. Brown, Ernestine Cass, President, Lucy Doty, Ruth Eyles, Mary E. Francis, Mary Hollingsworth, Ann W. Johnson, Ruth Kaplan, Elizabeth Kenney, Hunter Mallard, Jeanne Matthews, Frances McCalla, Blanche Miller, Selma Steinbach, Henrietta Thompson, Mary Frances Thompson, Secretary, Peggy Willis, Mary Ellen Whetsell, Llewellyn Wilburn.



ARCHERY CLUB

Archery Club members can be seen on the hockey field piling up their score in the annual tournament. In the fall a dinner party was given in Atlanta followed by an archery tournament at the new city range.

Members: Lelia Carson, Ruth Eyles, Gary Horne, Eunice Knox, Virginia McWhorter, Virginia Milner, Louise Musser, Lou Pate, Nellie Richardson, Betty Robey.

SWIMMING CLUB

The members of Swimming Club are all-round mermaids measuring up to the requirements of distance swimming, form, diving, and life saving. They sponsored two swimming meets and a colorful water pageant.

Members: Alice Cheeseman, Carolyn Forman, Jane Moore Hamilton, Doris Hasty, Beryl Healy, President, Bryant Holsenbeck, Kathleen Houck, Suzanne Kaulbach, May King, Sara Matthews, Virginia McWhorter, Julia Moseley, Secretary, Pattie Patterson, Mary Reins, Jane Taylor, Doris Weinkle.



TENNIS CLUB

With the approach of spring tennis club fans find it hard to resist the temptation of perfect weather and inviting courts. Regular meetings are held once a week as the members challenge each other to hard-fought games. The faculty are often seen on the courts in the midst of a fast set, and several times a year Atlanta guests find that Agnes Scott offers keen competition. The club, under the direction of Mary Nell Taylor, sponsored a fall doubles tournament, and in the spring the campus championship was decided in the singles combat.

Members: Standing: Ruth Slack, Ann Fisher, Roberta Ingles, Dot Webster, and Miriam Jones. Seated: Helen Carson, Mary Nell Taylor, Ethelyn Dyar, Nancy Wimpeimer, and Mary Robertson.

Missing from picture: Elizabeth Kenney, Carolyn Forman, Helen Klugh, and Ellen Stuart.



Mary Nell Taylor, tennis manager, is the school's star player.





The Faculty-Student game was the sensation of the season.

HOCKEY, KING OF

Friday afternoon hockey games aroused keener excitement than usual with well-matched teams fighting hard for the championship while the gallery tried valiantly to out-yell the freshmen. The 1938 hockey season will be remembered for the close games and also for the lack of the proverbial rains which usually cause such upsets of plans.

The junior class came out of the season's battles undefeated, and for the second consecutive year won the coveted purple and white banner, while the sophomores ran a close second. As a reward for her outstanding spirit and skillful handling of stick and ball, Dusty Hance was presented the hockey stick, awarded annually to the most deserving sophomore.

Miss Mitchell streaks down the field as the referee.

Jane Dryfoos presents Modesta Hance with the hockey stick, awarded for outstanding skill.

3:30 and time for the whistle!





The freshman spirit triumphs again.

AUTUMN SPORTS

The inter-class games displayed true skill and real spirit, but the climax of the season came with the Faculty-Student combat. This well-attended game was enlivened by the spectacular runs made by Dr. Davidson and Dr. Hayes and the vigorous attempts of Dr. McCain to defend the goal against the student onslaught. The spirit of the student team led by Dryfoos and Milner was too much for the opposition and the final score rested 2-1 in their favor.

During the freezing fall weather the teams appreciated the newly acquired long wool suits that looked cute but felt better.



Local color on the side-lines.



"We want a goal! We want a goal!"

SENIOR TEAM

Standing: Jane Dryfoos, Elizabeth Kenney, Catherine Ivie, Jane Jones, Core Kay Hutchins, Jene Moore Hamilton, Flora MacGuire. Seated: Adelaide Benson, Cary Wheeler, Lucy Doty, Martha Marshall, and Emma McMullen.

Missing from picture: Catherine Farrar and Virginia Tumlin.



JUNIOR TEAM

Standing: Ruth Slack, Betty Jean O'Brien, Jane Salters, Virginia Milner, Ruth Eyles, Polly Heaslett, Peggy Stixrud. Seated: Carolyn Forman, Helen Carson, Mary Evelyn Francis, Ernestine Cass, Sam Olive Griffin, and Sophie Montgomery.

Missing from picture: Julia Moseley and Mary Nell Taylor.



SOPHOMORE TEAM

Back row: Mary Bell, Julia McConnell, Julia Lancaster, Grace Ward, Jo Cates, Betty Moore, Arlene Steinbach. Front row: Martha O'Nan, Ida Jane Vaughn, Modesta Hance, Louise Sams, and Jean Dennison.

Missing from picture: Ella Muzzey, Pattie Patterson, and Scotty Wilds.



FRESHMAN TEAM

Jessie MacGuire, Dot Webster, Elise Nance, Jane Taylor, Betty Robertson, Mary Dean Lott, Tade Merrill, Sara Copeland, Betty Ann Brooks, Virginia Franklin, Billie Davis, Elizabeth Coffee, Mary Ann Faw, Charlotte Davis, Gay Currie and Marjorie Gray.

Missing from picture: Nancy Jo Ballengee, Annie Wilds, and Doris Hasty.



VARSITY TEAM

Standing: Henrietta Thompson, Ida Jane Vaughn, Mary Bell, and Modesta Hance.
Seated: Martha O'Nan, Jane Selters, Doris Hasty, Sophie Montgomery, Carolyn Forman, Emma McMullen, Jane Dryfoos, and Jane Moore Hamilton.

Missing from picture: Annie Wilds.



SUB-VARSITY TEAM

Seated: Ruth Eyles, Cary Wheeler, Mary Dean Lott, Ernestine Cass, Dot Webster, Peggy Stixrud. Standing: Flora MacGuire, Gay Currie, Adelaide Benson, Jane Jones, and Virginia Milner.

Missing from picture: Roberta Ingles, Ann Henry, and Mary Nell Taylor.



FACULTY TEAM

Mrs. Lapp, Dr. J. R. McCain, Miss Hunter, Miss Miller, Miss McCalla, Miss Mitchell, Dr. Runyan, Miss Bell.

Missing from picture: Dr. Hayes and Dr. Davidson.

"Block that goal!"





Scored!

And BASKETBALL SEASON ARRIVES

Benson and Steinbach jump
for the ball in the senior-
sophomore scuffle.



Bell tries for a goal.





Action!

In one of the fastest basketball seasons in years, the freshmen rode to glory undefeated with the sophomores rating a close second. The varsity-sub-varsity game was a battle of the first order with the varsity finally winning by a very narrow margin. Main Dormitory captured the Brown Jug tournament that wound up the quarter.



Seen at every game—Miss Jackson, the season's staunchest supporter.

Varsity members: Dot Webster, Mary Eleanor Steele, Ethelyn Dyar, Henrietta Thompson, Ann Fisher, Polly Ware, Betty Ann Brooks, Captain.

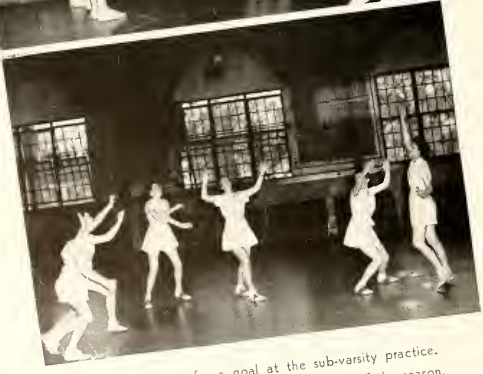


Webster, Steele, Dyar, Thompson, Fisher, Ware, Brooks.



SUB-VARSITY TEAM

Ruth Slack, Betsy Kendrick, Helen Klugh, Elaine Stubbs, Virginia Milner, Arlene Steinbach, Alta Webster, and Mary Dean Lott.



Top: Stubbs tries for a goal at the sub-varsity practice.
 Second: Varsity-sub-varsity game—the fastest of the season.
 Third: Dyar sinks a beauty!
 Bottom: Get that ball!

The memorable varsity-sub-varsity game of March third offered a little last minute excitement in the athletic line before the demands of exams pushed gym activities into the background for two weeks. In one of the fastest and closest games in many years, the varsity fought valiantly to snatch the game from their fighting opponents. At the half the sub-varsity was in the lead, but the dismayed varsity rallied and after a furious battle piled the points up to a final 36-29 in their favor.

Those in the balcony were able to catch glimpses of flashes of white as Dot Webster streaked past exhausted guards to add to the mounting score. In a game that will go down in the annals of basketball history, each member of both teams distinguished herself through skillful and lightning-fast playing.

On the HARDWOOD

Managers Webster, MacGuire, Dyar, and Carson are sociable before the battles start.



Mary Dean Lott and Dot Webster demonstrate the chest throw to the FRESHMEN:

Standing: Dot Webster, Jane Taylor, Bee Bradfield, Carolyn Dunn, Betty Ann Brooks, and Mary Dean Lott. Seated: Alta Webster, Annie Wilds, Sara Copeland, Mary Olive Thomas, Becky McElwaney, and Ann Gellerstedt.

The SOPHOMORES take time out.

Elaine Stubbs, Susan Self, Ann Fisher, Arlene Steinbach, Scotty Wilds, Ethlyn Dyar, and Mary Bell.

Missing from picture: Ann Henry, Helen Klugh, and Betsy Kendrick.

Carson gives a few pointers to the JUNIORS.

Helen Carson, Carolyn Forman, Virginia Milner, Ruth Slack, Henrietta Thompson, Ruth Eyles, Polly Ware.

Missing from picture: Ernestine Cass, Jane Salters, and Mary Reins.

The SENIORS "flop" between quarters.

Sara Carter, Lucy Doty, Flora MacGuire, Jane Dryfoos, Mary Eleanor Steele, and Adelaide Benson.

Missing from picture: Caroline Carmichael.



Swimming classes work to perfect formations.

A WORD ABOUT WATER SPORTS

Agnes Scott swimmers are not to be daunted by cold weather for in winter and spring alike plunge period is always open to the hardiest. Those who wish to get rid of that "stuffy feeling" after an afternoon in the library can strike out to the gym to perfect their crawl or to work on diving form.

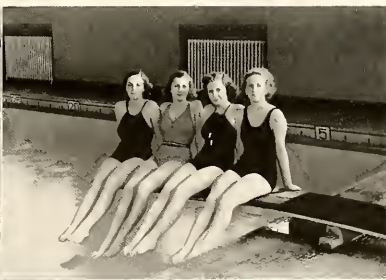
In the fall Swimming Club sponsored two meets in which the main events were the forty-yard dash, relays in form swimming, and diving. In both meets the juniors splashed to victory winning first place. In the first meet of the season the

sophomores came in second with the freshmen following a close third, but the second meet reversed this position. The diving event was won by Julia Moseley.

During the second quarter the club featured a water pageant taken from the Greek myth of Daphnis and Chloe. Virginia Milner as Daphnis and Beryl Healy as Chloe were the two lovers who were parted by the wiles of the devil and his imp, Jeannette Heranger and Carolyn Forman, but were happily reunited in the end. The formation swimming brought cheers from the gallery.

Members of the life-saving class, under the instruction of Miss Mitchell, worked hard and as a result are proudly displaying Red Cross badges signifying their achievement.

Practical swimming is taught in the life-saving classes.



TEAMS

FRESHMAN

Suzanne Kaulbach, Doris Hasty, Jane Taylor, Lila Peck Walker, Ann Gellerstedt, and Mary Blakemore.

Missing from picture: Kathleen Huck and May King.

SOPHOMORE

Pattie Patterson, Martha Moody, Doris Weinkle, and Beryl Healy.

JUNIOR

Mary Reins, Bryant Holstenbeck, Julia Moseley, Virginia McWhorter, Carolyn Forman, and Virginia Milner.

VARSITY

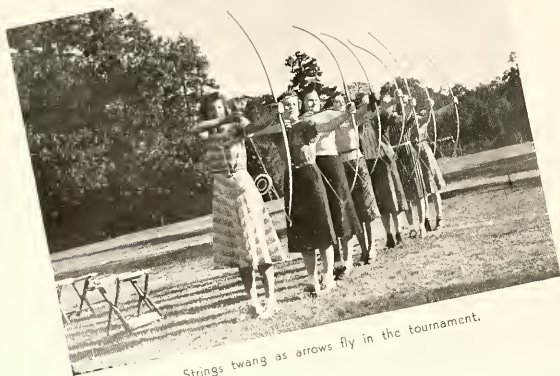
Carolyn Forman, Beryl Healy, Julia Moseley, Pattie Patterson, Jane Taylor, and Virginia Milner.

CHAMPIONS

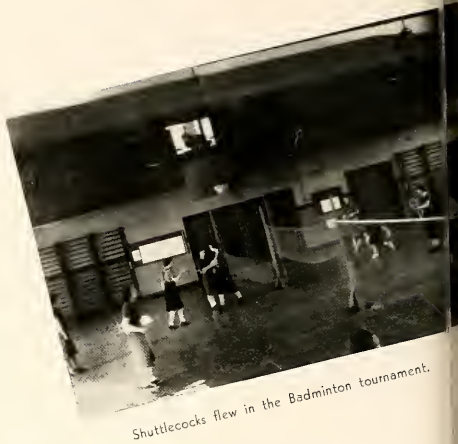
in the making



Hiking squad strikes out.



Strings twang as arrows fly in the tournament.



Shuttlecocks flew in the Badminton tournament.

The ever popular Minor Sports kept the athletic minded element on the campus trotting toward the gym with golf clubs, tennis racquets, and dancing costumes. Riding has won such popularity that the classes could not accommodate all who felt the call of the trail. With envious eyes we watched the equestriennes leave for the Biltmore Riding Academy, although they commented later on the afternoon fun in a rather "stiff" manner.

Archery brought out its usual spring following and a fast tournament was waged as the class competed for the championship.

The Badminton tournament caused a sensation as Ann Fisher and Roberta Ingles fought valiantly to wrest the championship title from Frances Spratlin and Jean Dennison, who proved to be close competition.



Good horses, spring afternoon—a perfect inducement.



The gallery awaits the outcome of the hard fought doubles tournament.



Ethelyn Dyar and Ann Fisher congratulate Mary Nell Taylor and Helen Carson, the winners of the doubles tournament.

On COURT GREEN *and* TRAIL

Tennis has always brought out swarms of fans in the fall and spring quarters. Only the rigors of winter weather and the condition of the courts keep this group inside during the short winter season. At a closely matched tournament last fall, a large gallery watched **Helen Carson** and **Mary Nell Taylor** bring the tennis doubles tournament to a smashing close, defeating **Ann Fisher** and **Ethelyn Dyar**. The singles tournament was held in the spring quarter.

Every year Mr. Sargent and Miss Wilburn are a little overwhelmed at the vast number of aspiring golfers who turn out to develop their skill in "ten easy lessons." Beginners learn fundamental strokes on the hockey field as they think of that long awaited day when they can mix with the advanced group at Forest Hills.



Miss Wilburn drives down the fairway.

CALLING ALL STARS

Those who wished to develop the aesthetic sense were included in Mrs. Lapp's class in natural dancing. Garbed in gaily colored flimsy costumes, individual interpretation was stressed as the girls danced to the strains of Chopin and Tchaikowsky waltzes.

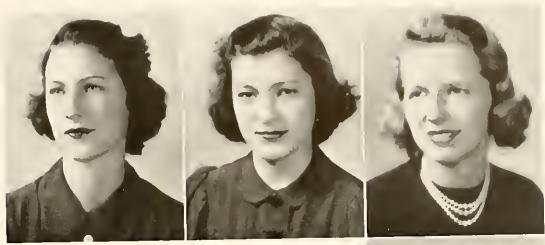
The largest class on the campus was Miss Dozier's social dancing, for the opportunity to learn the Yam, the Rhumba, the Tango, and the Lambeth Walk was too appealing for sixty or so girls to pass by. This year the usual interest in modern dancing was augmented by the attractiveness of the new costumes, introduced during the winter quarter. Working on difficult steps, the class succeeded in perfecting striking formations.

Folk dancing brought out the usual number who wished to develop grace, reduce, or spring the steps on astonished admirers.

Always willing to keep up with the latest developments, Miss Mitchell took her recreational games classes to Dec to join the crowds at the new bowling alley. Ping-pong and other recreational games were offered also.



Top: Lib rolls for a strike. Second: Toward the development of grace classes. Bottom: Modern dancing, modern costumes.



With Pride WE PRESENT the
Wearers of the



EMMA McMULLEN



VIRGINIA MILNER



RUTH SLACK



HENRIETTA THOMPSON



Athletic Association letters are coveted by all but only star athletes who are able to accumulate 1600 points are included among the favored few. This year Jane Dryfoos, Carolyn Forman, Jane Moore Hamilton, Emma McMullen, Virginia Milner, Ruth Slack, and Henrietta Thompson wore letters.



CHEER LEADERS

Florence Ellis, Elaine Stubbs, Alice Cheeseman, Betty Jean O'Brien, Georgia Hunt, Gay Curry, Bee Bradfield. Missing from picture: Caroline Carmichael.



MAY DAY COMMITTEE *Sponsors*

"ORPHEUS AND EURYDICE"



Eloise Lennard gives suggestions about staging effects.



Mary Matthews, Sabine Brumby, Eloise Lennard, Mary Frances Moore, Beth Paris, Betty Waitt, Helen Moses, Helen Kirkpatrick. Missing from picture: Bryant Hol- senbeck, Penn Hammond, Mary Evelyn Francis, Hayden Sanford.

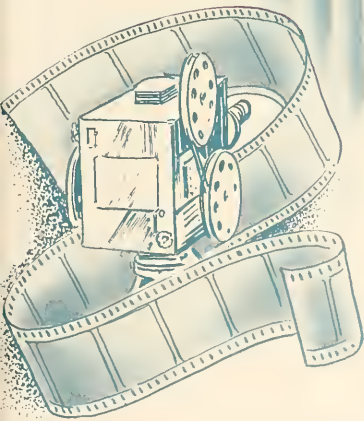
THE COMMITTEE COMPLETES PLANS FOR MAY SIXTH

During the spring, campus attention is focused on the May Day Committee as preparations get under way for the last major event of the year. As May the sixth approaches with meetings to work out intricate dance routines, develop the plot and make the costumes, the group finds its hands full. With such preliminaries over as the holding of the election for the queen and her court and the selection of a scenario from contributions by the students, the real work begins.

This year the Committee did a brilliant piece of work on a program based on "Orpheus and Eurydice."



—And then the business of dyeing and making costumes.



FEATURES

Reel 4



ADRIAN





February 23, 1939

Dear Miss Shortley,

You gave me a difficult assignment in selecting the eight most beautiful girls.

All of your students have a great deal of charm, judging from the photographs.

Miss Lee has a youthful freshness that seems to place her at the head.

Miss Taylor is a very gay, direct person and is second.

Miss Hamilton has a charming personality in this picture and is third.

I shall put Miss Dunn fourth, Miss Neilsen fifth, Miss Copeland sixth, Miss Muzzey seventh, and Miss Toole eighth.

There were many faces which could have probably been included, but I shall let the decision remain as it is.

Wishing you all much success.

Sincerely,

A-gh

NO AGREEMENT OR ORDER WILL BE BINDING ON THIS CORPORATION UNLESS IN WRITING AND SIGNED BY AN OFFICER





Costumes and settings through
the courtesy of Rich's



Sara Elizabeth Lee



Costumes and settings through
the courtesy of Rich's



Jane Taylor



Costumes and settings through
the courtesy of Rich's



Jane Moore Hamilton



Caroline Alley



Adelaide Benson



Jean Lennison



Martha Quinn



Margaret Hamilton



Modesta Hance



Edith Henegar



Val Nielsen



Mary Hollingsworth



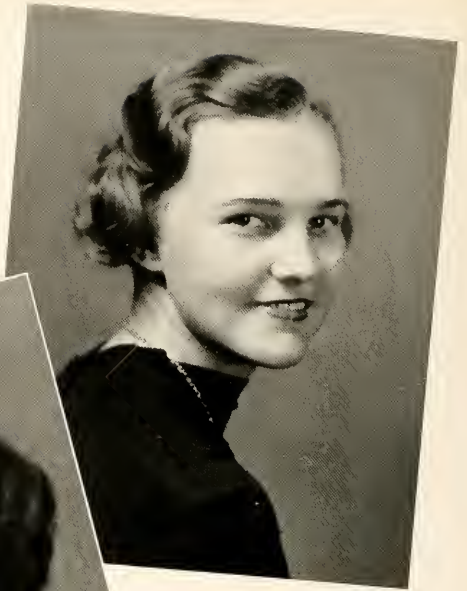
Martha Marshall



Helen Moses



Sara Copeland



Amelia Nickels



Pat Reasoner



Mary Reins



Ella Muzzey



Ruth Slack



Aileen Shortley



Mary Ellen Whetsell



Mary Helen Stewart



Kay Toole



****—Catchin' Up

CAMERA CONTEST

"Pictures of the Month"

RATING

- ****—Excellent
- **—Very good
- **—Still good
- *—Good



**—A Quadrangle Study



**—Don't forget your calories



*—"Eager Students"



*—Gothic Beauty

HONORABLE MENTION

7:30 A. M.—"News while it is news." . . . But classes go on forever. . . . Happy birthday, Mitzi. . . . O. K.—Enough is enough! . . . Plutocrat. . . . The sleeping beauty. . . . Tea house bill AGAIN? . . . February 14th? You did O. K., Musser. . . . Familiar sight No. 999. . . . Must have been a good chapel.





THE CANDID CAMERA CONTEST

Brought These Out

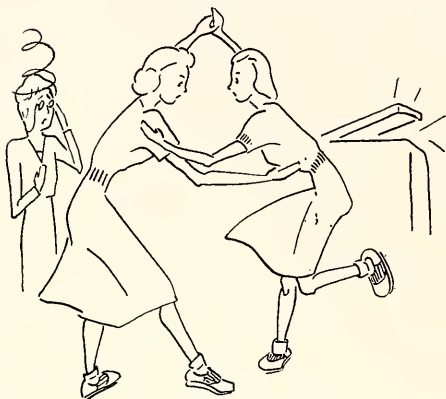
Left: Dr. McCain uses the main entrance at the A. A. Fair.
 Below, first row, left to right: Market for vitamin D. . . .
 Regular attenders. . . . The scientific-minded element. Sec-
 ond row, left to right: Typical! . . . General information
 bureau. Third row, left to right: The Spirit of Spring. . . .
 Small fry at the A. A. Fair. . . . Someone had the right idea.



First row, left to right: "Mais certainement." . . . Another one of those "heart attacks." . . . Carrots again? Second row, left to right: The retreat from the retreat. . . . Let us in on the joke. Third row, left to right: "Let's make this a little more informal." . . . The pause that refreshes with a little gossip thrown in. . . . Too late to look it up now, girls! . . . 7 A. M. already.



1 highlights and



"and they call it jitter-bugging!"



Short
subject



Lessee now — that makes it —
exactly 17½¢ apiece

Modern dancing
stresses
individual interpretation

Side lights



INMAN-
12 o'clock

'after all!'



- and three centuries to go!

two hours +
minutes!
ten
@ star star star



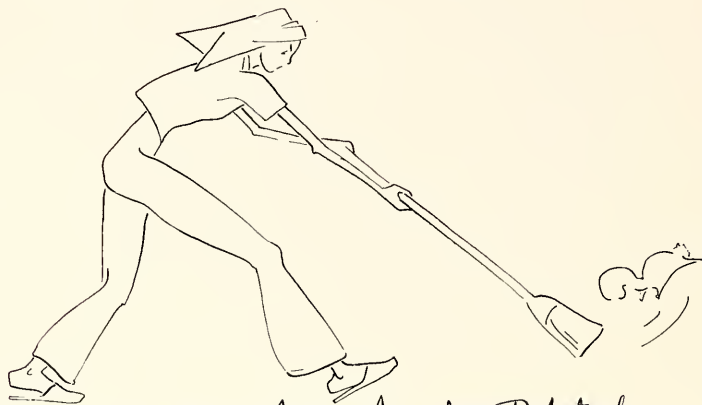
The after-the-concert rush



- where push + umph + high pressure
go a long way!

BShamos

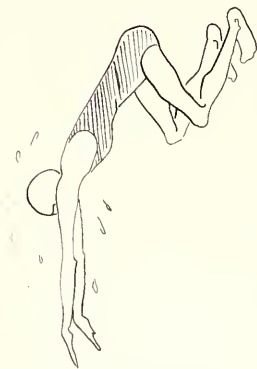
Highlights and



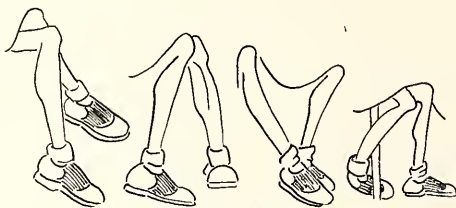
Needed: a squirrel proofer for Rebekah



"I was doing OK until
that PINK came along!"



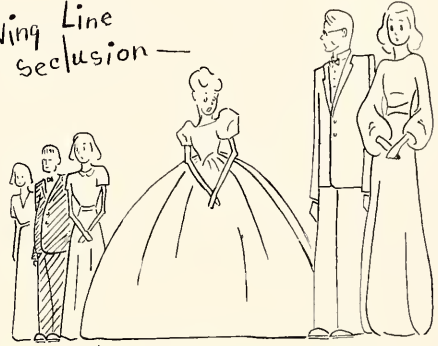
Seen in passing



FRONT ROW VIEW POINT.

Side lights

Receiving Line
seclusion—



Modern Hoop Skirt problem #31.



Along Faculty row—



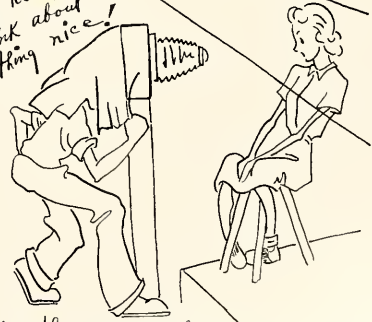
The ups and
downs
of
our athletic careers—

Rebekah
Balcony—



For that outdoor look
Bake til well-done!

Now just relax
and think about
something nice!



(another one of those
"breathe in an idea" ideas)

ALSO SELECTED SHORT SUBJECTS... *News*

"CAMPUS HEADLINES IN REVIEW"

Mr. Ware opens the season, but
Mutt catches him in the act.



September nineteenth—The 1938-1939 session opens with the excitement of the registration mob scene. . . . The business of getting settled goes on (without Mother's help). . . . Freshmen meet freshmen and the fun starts. . . . In the meantime upperclassmen learn the details of the roommate's summer romance.

But sponsors and sponsees go into lengthy discussions as the problems of freshman orientation are ironed out.



September twenty-third—Books are reluctantly pulled out as classes start. . . . And the rats are required to wear bibs until they grow up.

THE BLACK CAT STUNT
October Fifteenth



"Soph White
and
The Seven
Slumps"



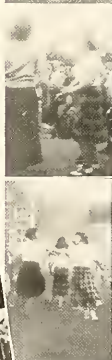
With their version of "Soph White and the Seven Slumps," a parody on "Snow White," the sophomores give their freshman rivals keen competition in the fight for the Black Cat, but the freshmen know their southern history. Their "Fate of Kitty Black" sends the coveted prize straight into the arms of Betty Ann Brooks, freshman chairman, in spite of the clever work done by Mary Bell and her class.

"The Fate of Kitty Black"



PINK LEMONADE AND POP AT THE A. A. FAIR October Twenty-ninth

Left, top to bottom: The hockey field is converted into the fair grounds. . . . Get your finger out of the lemonade, Penn! . . . And the reporter gets the lowdown— . . . The Fashion Show displayed the latest attire for the "outdoor type." . . . Step right this way, Ladeez and Gentlemen! . . . Main entrance—a barrel of fun— Below, first row, left to right: The jitterbuggers draw their public. . . . Try your skill for only a penny! Second row: Swing out, Whetsell. Third row, left to right: Willy and Wimpy lead the Lambeth Walk. . . . 14-49-26, BINGO!!! Fourth row, left to right: Val, Emma, and Steelie are the contrast to the modern side of the Fashion Show. . . . The merry-go-round (before it broke down) was a little hard on A. A. Board.





LITTLE GIRLS' DAY November Eleventh

Above, left to right: Mortar Board turns back the clock. . . . Jacks are the order of the day. . . . Julia beams with pride over her best baby doll. . . . Flora laughs at the country cousin. Left: Watch the birdie! Below, first row, left to right: You all are so coy! . . . This will be your Waterloo, Kay. . . . If Mama could only see you now. . . . Second row, left to right: You are a little late, Flora. . . . Miss Scandrett marvels at how the children have grown. . . . That motherly touch. . . . Cary, Mary Ellen, and Mary put on the sister act. Third row: Ginger, Aileen, and S'Vie think it a huge joke. Fourth row: Looks peculiar if you ask us. . . . Go forth and face your lover. . . . Little Pussy turns candid camera fan.





INVESTITURE November Twelfth

Miss Hunter holds an interested audience. . . . Congratulations are in order. . . . Fond parents turn out "en masse." . . . Everybody looks happy. . . . The faculty processional enters the picture. . . . Miss Scandrett caps the Senior Class president, Cary Wheeler. . . . The sophomores lead in the triumphant sister class.





November tenth — Mr. Goodspeed arrives.
 . . . November eighteenth—Evelyn Hanna,
 former Agnes Scott student, speaks on "Black-
 berry Winter." . . . Book lovers haunt the
 library during "Book Week." . . . Gina Wat-
 son comes back for a visit and is congrat-
 ulated on her all-American annual. . . .
 Christian Association consecration service is
 an impressive sight.



November eighteenth—Blackfriars present
 "Stage Door." . . . Dramatic situations arise
 in "the Footlight's Club." . . . Jeanne Flynt
 turns down a Hollywood contract (in the play).
 . . . Praises to Jeanne Flynt and Gilbert
 Maxwell for their superb portrayal of the lead-
 ing roles. . . . November nineteenth—The
 British debaters challenge the Hopkins-Merlin
 team.

AS THE OLD YEAR ENDS AND THE NEW STARTS



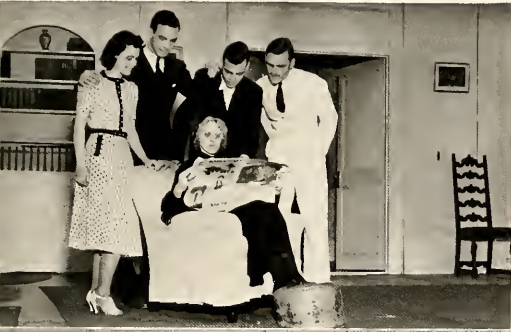
December tenth—The Mortar Board Recognition service is held. . . .
 December tenth—Christian Association imports Santa Claus early at the party for the underprivileged children in Decatur. . . . December sixteenth—Christmas finally comes in spite of our early doubts. (Tede looks happy.)



Miss Harn's annual party and others work up Yuletide enthusiasm.

January twentieth—A. A. turns the gym into a bowling alley at the open house. . . .
 January twenty-first—Phi Beta Kappa announcements create excitement. Where is Corky? Did she pass out? . . .
 January thirty-first—The freshman taffy pull is sticky, but fun.

BLACKFRIARS PRESENTS
 Dream of An August Night" February Eighteenth



Above, top to bottom: Evelyn Sears, the secretary, Dr. Robinson, the butler, Laura Sale, the domineering old servant, Rowena Barringer, the maid, and John Winchester, the love interest, take part in "Dream of An August Night." . . . Alice Cheeseman adds the finishing touches to Rowena's make-up as Laura Sale supervises. . . . Dr. Robinson, Laura Sale, Ed Coles, and Margaret Hopkins pause between scenes to chat. Left, top to bottom: Rosaria (Jeanne Flynt), and the three brothers, played by Ed Coles, Covington Hardy and Jack Bodenhamer, humor their authoritative, thrice married grandmother (Alice Adams). . . . Maria Pepa (Laura Sale) argues with Donna Barbita (Alice Adams) as Rosaria (Jeanne Flynt) looks on in amusement. . . . Jeanne Flynt bids John Winchester, Covington Hardy, and Ed Coles good night. . . . Backstage the tedious process of "getting ready" goes on.

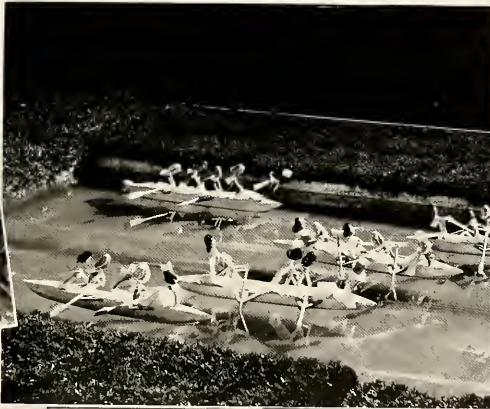


Left, top to bottom: With the crews pulling hard, the team captains root from the sidelines. Dr. Davidson (chairman), Amelia Nickels (student chairman), Cary Wheeler (Senior), Betty Ann Brooks (Freshman), Julia McConnell (Sophomore), Mary Lang Gill (Junior) and Miss Mitchell (faculty) speculate on the outcome. . . . Flora and Ad seem jubilant as they leave via the gangplank after the luncheon. . . . Wimpy (Ann Worthy Johnson), Popeye (Miss Wilburn), and Olive Oil (Miss Miller) air their ideas about the campaign in the faculty skit. Center: The mob scene quiets down to listen to Mr. Winship, chairman of the Board of Trustees. Right, top row: The race is on! . . . Rowena Barringer and Ann Martin jitterbug in the C. A. contest to raise funds. Right, bottom row: Dr. Davidson piles up the score at the Granddaughters Club bridge party. . . . Wait a minute, Dr. Davidson, don't move those Freshmen too far!

THE CAMPUS SETS THE PACE February Fourteenth-Twenty-fourth

With the greatest display of campus-wide spirit that has been witnessed in several years, the campaign was brought to a thrilling end as the final announcement was made in a momentous chapel program February the twenty-fourth. Through the combined efforts of students and faculty the goal of \$40,000 was exceeded as the dollars piled up to reach the final amount of \$52,202.

The campaign started off with a bang at a luncheon given for the entire college community with skits, speeches, and music all doing their part toward working up enthusiasm for the forthcoming drive. As the campaign continued through four tense days packed with excitement and suspense, every student did his share toward raising the sum by one means or another. Organizations went the limit and pledged every extra penny to the cause, while the faculty was the most successful of all in bringing in contributions from their own ranks. Although the faculty shell, under the leadership of Miss Mitchell, pulled into the finish first with \$20,505.50 to their credit, the Sophomore class came out triumphant in the student race with the Freshmen giving them the keenest competition. The Senior class fell third in line with the Juniors fourth.





February eighteenth—O. A. O.s pour in for the Junior Banquet. . . . February twenty-second—Martha Washington (Aileen Shortley) draws a circle of admirers. . . . Daniel Boone trips the light fantastic with Kitty Caldwell. . . . Tradition lives on with the Founders' Day Minuet. . . . Jitterbugs, Lambeth Walkers, etc., etc., can't resist the music.



MARDI GRAS

March Twenty-fifth

The cleverest float—"Inside Europe."
 . . . Dusty Hance and Ann Fisher
 reign over the festivities with Jane
 Taylor, Virginia Montgomery, Ruth
 Slack, Jane Moses, Kay Toole, and
 Amelia Nichols in their court. . . .
 The sophomore float features a live
 goat. . . . The most beautiful float
 —"Rose in Bloom." . . . Chi Beta
 Phi portrays "Mme. Curie." . . .
 Mother Goose and the American
 Doctor both appear on the scene.
 . . . The Rubiyacht gets a laugh.





Left, top: Grace Ward, Kay Kennedy, Helen Lichten, and Betty Waitt find Andre Maurois enchanting as he appears March 29th. Middle: Katherine Rhodes, Helen Carson, and Mary Jane Bannister discuss the final election returns March 30th. Bottom: "Who's Who" is published and includes Hamilton, Nickels, Lyle, Guthrie, Wheeler, Whetsell, Flynt, and Benson.



THE GLEE CLUB PRESENTS "THE GONDOLIERS"

March 30th and 31st

Right, top row: Two husbands and three wives—net result a problem. . . . Gene Powell (Luiz), Jeannette Carroll (Casilda), Amelia Nickels (Duchess of Plaza Toro), and Dick Smoot (Duke of Plaza Toro) play the leads. Second row: Jeannette Carroll, Jane Moses, Dick Smoot, and Paul Overby dance the Gavotte. . . . The crowd rejoices as Mario chooses his bride. Third row: Is it poker? . . . The cast assembles in a colorful array. Fourth row: "For the merriest fellows are we." . . . The duke presents his daughter to the court. . . . In the grand finale Luiz is proclaimed king and Casilda becomes his bride.



THE SENIORPOLITAN OPERA COMPANY
MISREPRESENTS "O-ME-O AND
YOU-MY-PET"

May 6th

Right, top: The Mightycutes and Catchimyets break up the tender balcony scene between O-Me-O (Amelia Nickels) and You-My-Pet (Jane Moore Hamilton). Middle: Mama Catchimyet (Toni Newton), Dr. Catchimyet (Elizabeth Furlowe), Pridelett (Jac Hawks), and Joylett (Virginia Kyle) put on a convincing death-bed scene. Bottom: But O-Me-O goes them one better.



Left, top: You-My-Pet proves to be a problem child. Second: The grand finale brings the Mightycutes and the Catchimyets together as one big happy family. Third: You-My-Pet is an ornery brat as Pridelett and Mama Catchimyet try to tell her that she will have beaux soon enough. Bottom: The end finds You-My-Pet and O-Me-O happily united in heaven.



Left, top row: Orpheus and Eurydice dance together. . . . The Furies pull Eurydice away as Orpheus leaves Hades. Second row: The Daughters of Darius dance before the court. . . . Demeter (Louise Hughston) bids farewell to Persephone.



Right: Helen Moses plays the role of Eurydice while Beth Paris takes the lead as Orpheus. Below: The Grecian court includes (left to right): Marian Franklin, Ella Muzzey, Ann Chambless, Carolyn Alley, Martha Dunn, Jean Dennison, Adelaide Benson, queen, Amelia Nickels, Jane Taylor, Martha Marshall, Aileen Shortley, Jane Moore Hamilton, Kay Toole, and Julia Porter.



MAY DAY

May 5th

"Orpheus and Eurydice"

Below, top row: The Daughters of Darius patiently pour water into a vessel full of holes as their punishment in the Underworld. . . . In the forest dell the satyrs pipe to Orpheus. Bottom row: The warlike Thracian women battle. . . . The tortured spirits of the Underworld are made miserable as the three Furies dance madly.



Adelaide Benson reigns as Persephone, the Queen.





Travelogue

"Along Campus Walks"



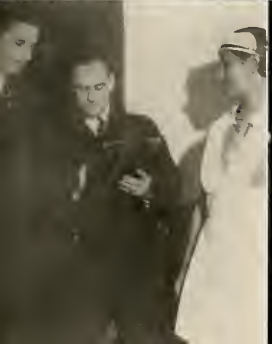


Educational Feature

Above: We believe in miracles—co-education at Agnes Scott. . . . Looks impressive! Right, from left to right, top row: Seems crazy but we're betting on you. . . . Nuf said. Second row: Do you know your periods of English literature, Miss Breg? . . . Even day students do it. . . . Haven't you caught that thing yet? . . . Don't let a little lab get you down, girls. Third row: Sh-h! Must have a test tomorrow. . . . The place is infested with bookworms today. . . . Ruth, don't look now but—Fourth row: You'll live, Murchison. We all did. . . . Where did that little squirt go? . . . Eleanor Hall knows her botany.



Below: The faculty hockey team gave us a stiff workout. . . . The hard work will kill you, Dryfoos! . . . Why stop at five spades, Helen? . . . Doesn't anybody around here study? . . . Have a seat, boys. If they are good, they'll be here in twenty minutes. . . . Time limit, three minutes—maybe. Right, top to bottom: "Got a date with an angel." . . . Looks like gossip to us. . . . After all—all work and no play does make Jack a dull boy, or something. . . . Nice work if you can get it. . . . What is this thing called higher education?



Comedy

Right, top row: How do-o you do it? . . . Hot cha-cha. . . Don't let it get you down. It isn't that bad! Second row: Straight out of heaven. . . It's a topsy-turvy world. . . Campaign spirit? Third row: The latest thing in sports attire. . . Reckon she's inflated? Below, top row: Even Miss Jervy would be stumped. . . My deahs! Remember you are ladies! . . . Are they social butterflies? Center: You'll get there, "Mitch." . . . How did you slip in twice, Miss Scandrett? Bottom row: Another one on the up and up. . . Such grace! Such poise! . . . Hi, Dr. Raper!

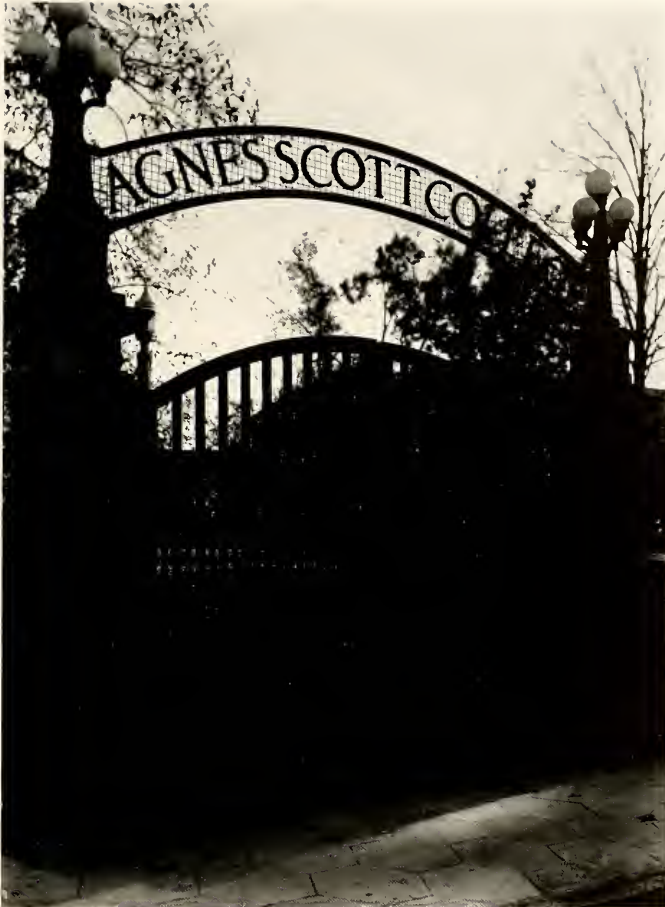


ADVERTISEMENTS



LIST OF ADVERTISERS:

AGNES SCOTT COLLEGE
J. P. ALLEN'S
ATLANTA BILTMORE HOTEL CORPORATION
BALLARD'S
BOWEN PRESS
CAMPBELL COAL COMPANY
CLAIRMONT SALON
COCA-COLA COMPANY
CRICHTON'S BUSINESS COLLEGE
DAHL'S FLORIST
JOHN B. DANIEL, INC.
DAVISON-PAXON COMPANY
DECATUR WOMAN'S EXCHANGE
DeKALB THEATRE
HARRY F. DOBBS, INC.
DRAUGHON SCHOOL OF COMMERCE
EAGER AND SIMPSON
EASTMAN KODAK STORES, INC.
EDWARDS AND SAYWARD
ESTES SURGICAL COMPANY
FOOTE AND DAVIES COMPANY
COMPLIMENTS OF A FRIEND
LEON FROHSIN'S
GASPAR-WARE STUDIOS
HERFF-JONES COMPANY
HOTEL CANDLER
JACKSON'S PHARMACY
KAMPER'S
McCONNELL'S TEN CENT STORE
THE DAVID J. MALLOY COMPANY
MANGEL'S
ORIGINAL WAFFLE SHOP
PHOTO-PROCESS ENGRAVING COMPANY
REGENSTEIN'S PEACHTREE STORE
RICH'S
THE SELIG COMPANY
J. P. STEVENS ENGRAVING COMPANY
S. AND W. CAFETERIAS
W. Z. TURNER'S LUGGAGE SHOP
VERA BEAUTY SHOP



Agnes Scott College

Decatur, Ga.

Dr. J. R. McCain, President

W. Z. Turner Luggage Co.

LADIES' PURSES
MODERN LUGGAGE

219 PEACHTREE STREET
WAlnut 6914

Hotel Candler

The Pride of Decatur

NO BETTER HOTEL
IN GEORGIA

PARTIES *and* LUNCHEONS
Our Specialty

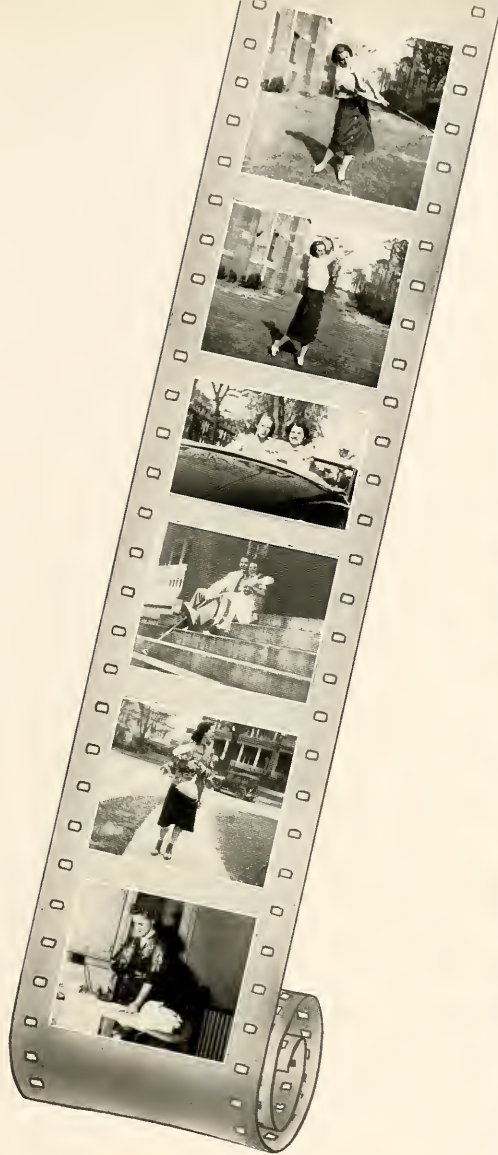

CAFETERIAS

*An organization specializing in the
production and serving of
wholesome foods.*

**189 - 191
PEACHTREE**



*She'll study while caddy looks for balls . . .
What's "Chub" doing . . . Typical Fite stance
. . . Concentrate on the swing, not Mr. Sar-
geant . . . Banks being made a belle . . .
What's in the cup, Muz? . . .*



Following through . . . Eyes on the ball, Miss Wilburn . . . Two queens and a chariot . . . Gordon, with his best foot forward . . . Silhouette trappings . . . Tuesday . . .

HOTTENTOTS

at your service at

DAVISON'S



JOYCE ROPER
Your Girl Friday



MELLIE ZELLARS DAVISON
Dress Buyer



ELLA HOPSON
Nations and Needlework Buyer



ROSALIND JAMES WILLIAMS
Ass't Advertising Manager



VIRGINIA POPLIN
Street Floor



MYRTLE BLEDSOE WHARTON
Advertising

Hi, Hottentots. We've established a branch of the Agnes Scott Alumnae Association at Davison's. We're a Committee of Welcome for you, your House of Representatives in what we hope is your favorite store. Please come in and see us. Call on us for anything. We help Davison's see *your* side of the picture, help give them the Hottentot viewpoint. We want you to feel as much at home at Davison's as you do in Main Hall and Rebekah Scott.

- Courtesy of Davison-Paxon Photograph Studios.



Pure refreshment



Engraved
 Wedding Invitations
 Announcements
 Reception and Tea Dance
 Invitations
 Visiting Cards and Informals
 Monogrammed
 Correspondence Stationery
SAMPLES SENT UPON REQUEST

J.P. STEVENS
 Engraving Co.
ESTABLISHED 1874

103 PEACHTREE STREET, ATLANTA, GA.

USE

Se-Fly-Go

does not stain : has pleasant odor

Really KILLS INSECTS

*Don't be worried and bothered
 by flies and mosquitoes . . .*

START NOW

Use Se-Fly-Go

MADE BY

The Selig Company

Est. 1896

Manufacturers

ATLANTA



*Agnes Scott scores again... in a
Rich's Debutante Shop Dress*

RICH'S



*Keeping up with the paramacia . . . "Mike"
or microscope . . . Line forms on the left . . .
Swinging along together . . . For he's a jolly
good fellow . . . To the tea house we must go
. . . For Freck's sake.*

- LUMBER
- MILL WORK
- ELECTRIC FIXTURES
- COAL
- STOKERS
- PAINT
- CEMENT
- SAND
- STONE
- GLASS BLOCKS
- PLASTER
- LIME
- COMPOSITION ROOFING
- INSULATION
- BRICK
- HARDWARE



"For Action Call Jackson 5000"

CAMPBELL COAL CO.

138 Marietta Street
ATLANTA, GEORGIA



Caroline Carmichael is most sophisticated in a frock thickly peppered with paint-white dots

Julia Porter's flowered print is the height of fashion

. . . . both party dresses from
THE JUNIOR-DEB SHOP

SECOND FLOOR



Posed before flight . . . Those three listening to "Giff" for a change . . . Campus hot-spot . . . Georgia's posing while Penn does the work . . . Getting the Bee on the quadrangle . . . They go to the library, too . . .

ORIGINAL WAFFLE SHOP



RESTAURANT

•
STEAKS
AND
CHOPS
•

COMPLIMENTS

...OF...



J. P. ALLEN & CO.
"The Store All Women Know"

EDWARDS and SAYWARD

ROBERT LOGAN, *Assistant*

•
ARCHITECTS

ATLANTA

GEORGIA

BRING US YOUR KODAK FILM
FOR EXPERT FINISHING

Correct Developing Means Better Pictures

**EASTMAN KODAK STORES,
Inc.**

EVERYTHING PHOTOGRAPHIC

183 Peachtree

:

Atlanta

DeKALB THEATRE



*"The Finest in Motion Picture
Entertainment"*

DECATUR

GEORGIA

HARRY F. DOBBS, INC.

HOTEL AND
RESTAURANT
SUPPLIES



287 PEACHTREE STREET, N. E.

ATLANTA • GEORGIA

bp

BOWEN PRESS

PRINTERS and PUBLISHERS

DEARBORN 0976

421 CHURCH STREET

DECATUR, GEORGIA

Agnes Scott . . .

SENIOR RINGS ✦ PINS
FOR ANY GRADUATING YEAR

furnished by

HERFF-JONES CO.

H. S. CANFIELD, 1560 N. Decatur Road, Atlanta

Also Complete Line of
INVITATIONS : CARDS : DIPLOMAS : GOWNS
MEDALS : TROPHIES : CUPS

**CRICHTON'S
BUSINESS COLLEGE**

ESTABLISHED 1885

ALL SECRETARIAL SUBJECTS

Including Stenotypy
The Machine Way in Shorthand

CRICHTON'S BUSINESS COLLEGE

PLAZA WAY AT PRYOR STREET

ATLANTA Walnut 9341 GEORGIA

Details Supplied Upon Request



FLOWERS FOR
EVERY
OCCASION



167 PEACHTREE ST., N.E. 150 PONCE DE LEON AVE.

LABORATORY SUPPLIES



ESTES

Surgical Supply Company

Compliments of ✦ ✦ ✦

The Atlanta Billmore

"The South's Supreme Hotel"



DINING AND DANCING

TO ATLANTA'S FAVORITE ORCHESTRA

Ballard's

DISPENSING OPTICIANS

*It is essential that your optician is competent to
fill your oculist's prescription correctly*

**Walter Ballard
Optical Company**

THREE STORES:

105 PEACHTREE STREET, N. E.
MEDICAL ARTS BUILDING

382 PEACHTREE STREET, N. E.
DOCTORS' BUILDING

408 PEACHTREE STREET, N. E.

ATLANTA

GEORGIA

*For the college girls who want to look
their best . . .*

LEGANT, CARTER, AND FORMFIT
GIRDLES AND BRASSIERES

EAGER & SIMPSON

Junior Department

24 CAIN St., N. E.

ATLANTA

The DRAUGHON 'SCHOOL of COMMERCE

HIGH SCHOOL GRADUATION AND
CHARACTER REFERENCES—
ENTRANCE REQUIREMENTS

*Thirty-nine positions
filled per month*

ATLANTA

GEORGIA



VERA BEAUTY SHOP

Special Prices for Agnes Scott Girls

WEST PONCE DE LEON

DE. 6211

DECATUR

GEORGIA



*Beginning a splash . . . Running up the light
bill . . . A Bannister find . . . Ratio: 5 girls to
6 horses . . . Delving into trigonometry . . .
T. Dorsey swings again.*



*What do we do now? . . . Back to civilization!
. . . The A. S. C. gesture . . . Quit feeding
sugar to that horse . . . Swigging it down . . .
Dean's office closes at 5:00—but if you
hurry . . .*

K A M P E R ' S PURE FOOD STORES

•
58 YEARS OF
QUALITY AND SERVICE
•

"When Buying Foods Insist on
Having the Best"



“ON WITH THE DANCE”

This is an expression denoting joy. It became popular the early part of the nineteenth century after the publication of Lord Byron's "Childe Harold" part of which is, "On with the dance, let joy be unconfined." And that's the way you'll feel when you don one of the dance frocks at MANGEL'S now specially priced at \$6.98. Enchanting chiffons, marquissettes, laces, point de sprites. Just what you need for the Spring dances and priced so low that your allowances can still breath freely.

MANGEL'S

185 Peachtree St. • 60 Whitehall St.

ATLANTA, GA.

— And Patronize
Our Decatur Advertisers

Compliments of . . .

Decatur Woman's Exchange

MRS. COOPER

Hotel Candler Building

Clairmont Beauty Salon

DECATUR'S NEWEST

115 Clairmont Avenue

Phone: DE. 8011

A few minutes to Decatur . . .

M c C o n n e l l ' s

FIVE & TEN CENT STORES

In little Decatur . . .

Jackson's Pharmacy

Phone
DE. 1865
DE. 9268

AGNES SCOTT
DELIVERY

COMPLIMENTS OF A DECATUR FRIEND

*The Business Staff
of
The 1939 Silhouette*

wishes to take this opportunity of expressing its sincere appreciation to the advertisers and other friends, through whose kindness and generosity this publication is made possible. We request that the students bear these contributors in mind when patronizing the local trade.

THE 1939 SILHOUETTE IS CASED IN A MOLLOY-MADE COVER

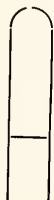
The David J. Molloy Plant • The S. K. Smith Company

CHICAGO :: ILLINOIS



Photography

by **GASPAR-WARE** 



ALL PORTRAITS

IN THIS BOOK MADE BY

GASPAR-WARE

Studios

30-32 FIFTH STREET, N. W.

**ATLANTA
GEORGIA**



OFFICIAL PHOTOGRAPHERS FOR

Aynes Scott

ALL SILHOUETTE negatives are held in our files for several years and portraits can be obtained at any time.

Write us for information and special price list.



SUCCESSFUL ANNUALS

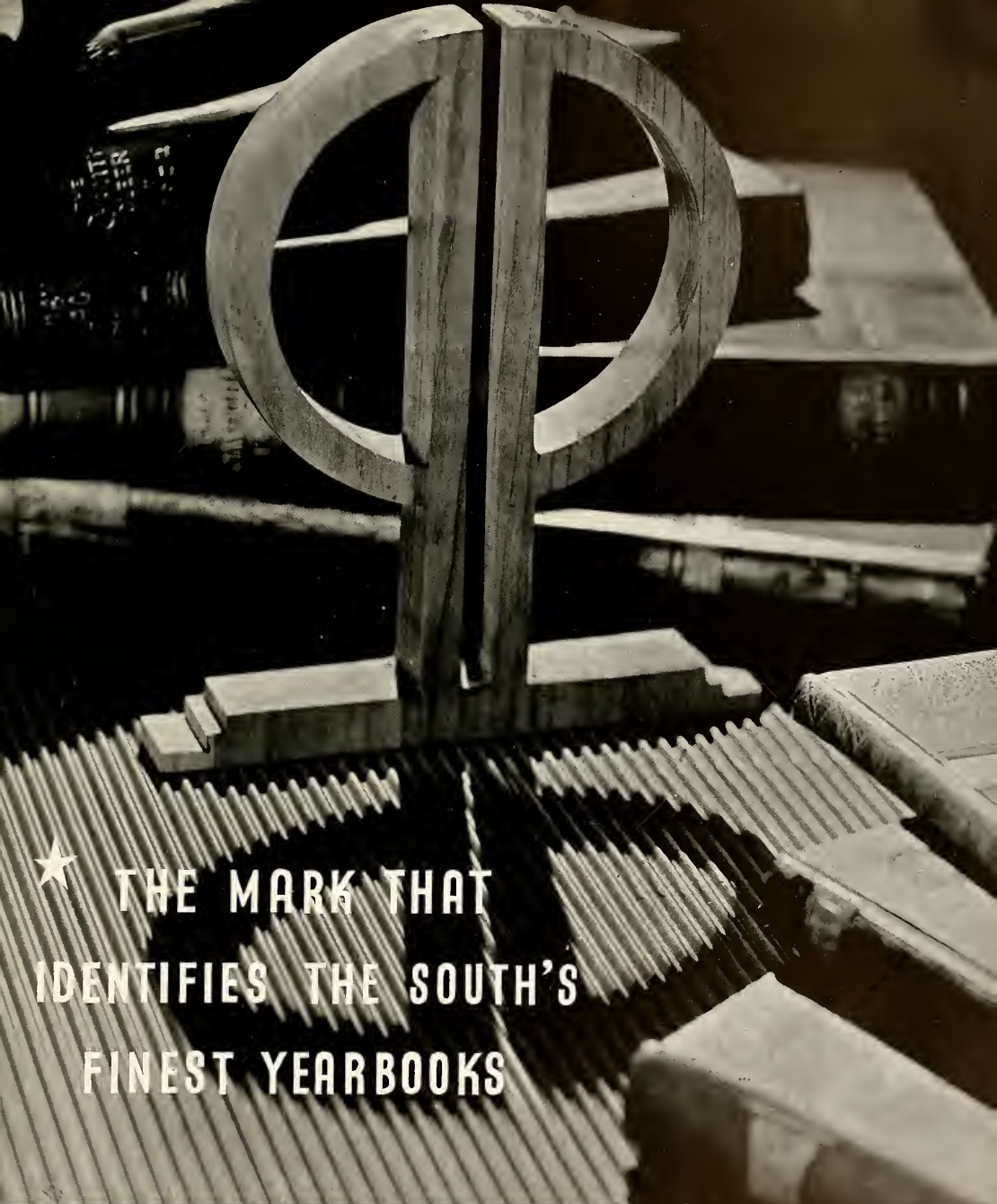
Require the services of experienced and expert craftsmen, trained in every detail of the processes of creating • planning layout and design • typesetting • printing lithographing and binding ... Throughout half a century this company has pioneered in the production of the highest type of printing ... Our services include a special college annual sales and service organization ... Abundant equipment • modern and complete ... Prices representing maximum in value



FOOTE & DAVIES COMPANY

PRINTING • LITHOGRAPHING • ENGRAVING

ATLANTA



★ THE MARK THAT
IDENTIFIES THE SOUTH'S
FINEST YEARBOOKS

PHOTO-PROCESS ENGRAVING CO.

115 - 119 LUCKIE STREET ★ ATLANTA GEORGIA





