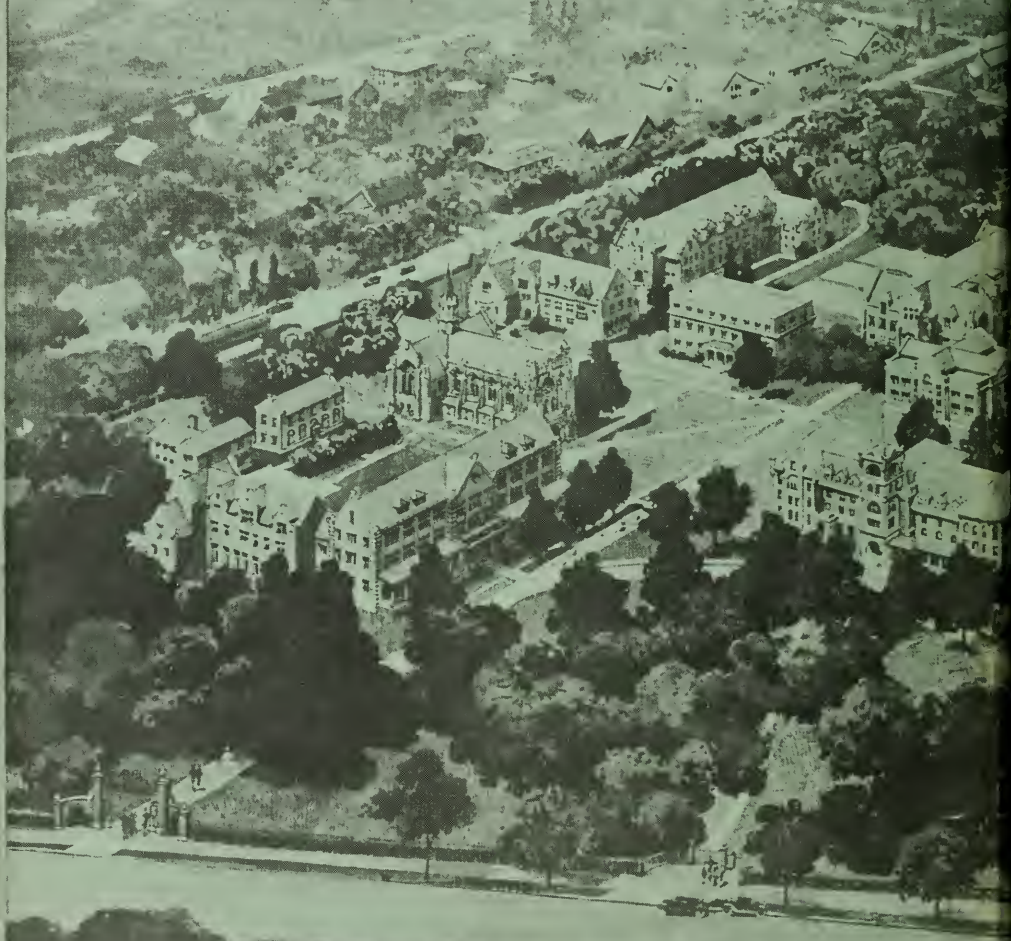




FACULTY HOUSE CHAPEL HOME DEPARTMENT BUILDING PRESIDENT'S OFFICE
ALUMNAE HALL INMAN HALL INFIRMARY SCIENCE HALL GYMNASIUM
EXTENSION OF INMAN HALL LIBRARY
AGNES SCOTT HALL



DEVELOPMENT OF AGNES SCOTT COLLEGE



ARBORETUM

THEATRE

RE-BUILDING

ATHLETIC FIELD

BUTTRICK HALL

REBEKAH SCOTT HALL

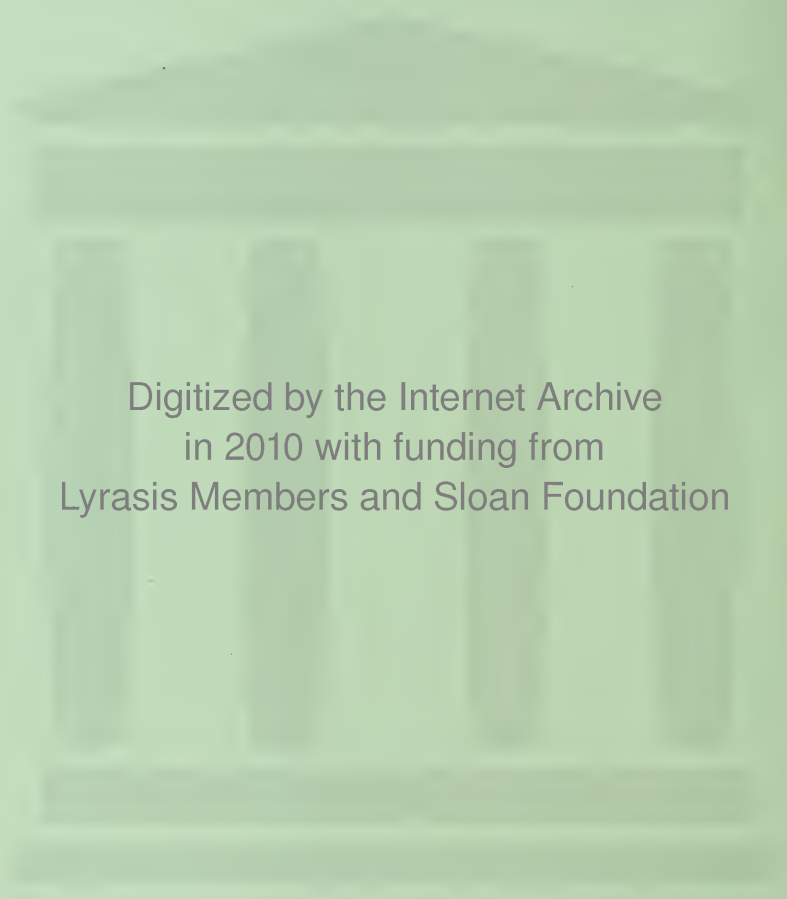
BOILER HOUSE LAUNDRY

DORMITORY GROUP

TENNIS COURT

MUSIC BUILDING

COLLEGE DECHMUR GEORGIA



Digitized by the Internet Archive
in 2010 with funding from
Lyrasis Members and Sloan Foundation

<http://www.archive.org/details/silhouette193733agne>

The
SILHOUETTE
1937



The S I L H O

Copyright

BARTON JACKSON
Editor



MARY GILLESPIE
Business Manager



J E T T E 1937

Published by the Students of

AGNES SCOTT COLLEGE
DECATUR, GEORGIA



ZW

T H E M E


The state of Georgia as the background of Agnes Scott has been taken as the theme for the 1937 SILHOUETTE. On the main division pages we have endeavored to picture for you the main sections of the state showing their beauty and their importance to the country. Georgia is a land of many resources, of great fertility, and of rare beauty. It is a mosaic of never ending progress which offers to more than three million people the essentials and pleasures of life.

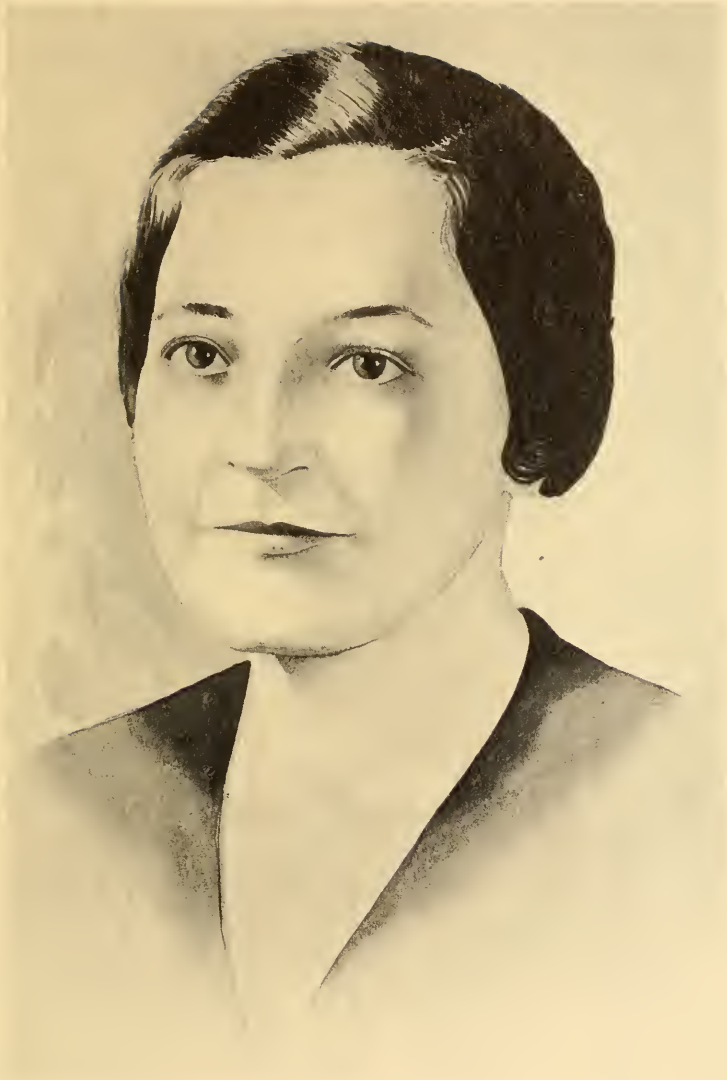


DEDICATION



To MISS CARRIE SCANDRETT who, after completing five years as assistant dean and as assistant registrar, has been, through her untiring cheerfulness and sincerity, a prime inspiration to the students and an outstanding asset to the college. To her, from whom we have received instruction, courage, and high ideals, the senior class respectfully dedicates this, the thirty-third volume of the SILHOUETTE.





Miss Carrie Scandrett

CONTENTS

•
BOOK ONE

College

•
BOOK TWO

Classes

•
BOOK THREE

Organizations

•
BOOK FOUR

Athletics

•
BOOK FIVE

Features

BOOK ONE

College...

Coast

Georgia's great ports with their facilities for transportation are today busy scenes with ships of all kinds pouring in and out, opening a gateway to the world. Negroes humming as they load the cotton and unload the imported products give a picture of thriving progress. Scattered up and down Georgia's one hundred miles of coast are resorts and beaches, popular and beautiful throughout the year.





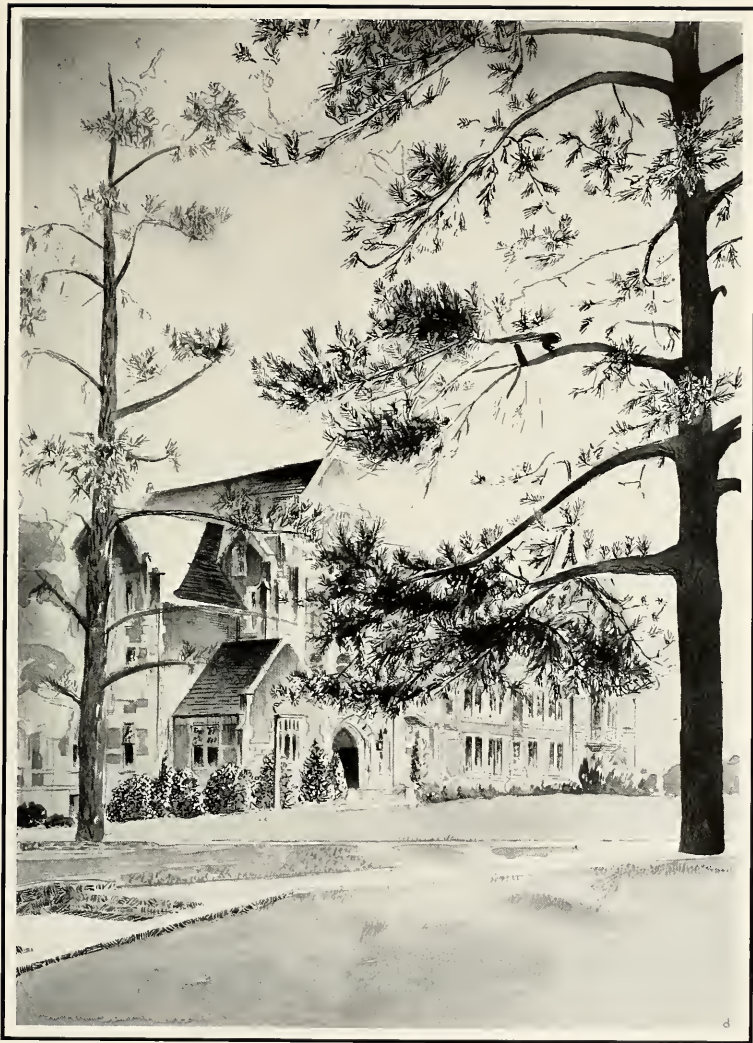
ZW



Views



Buttrick Hall





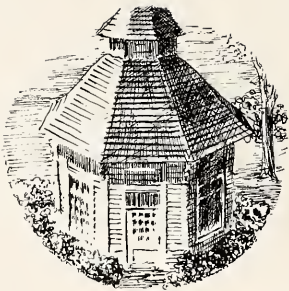
The Carnegie Library



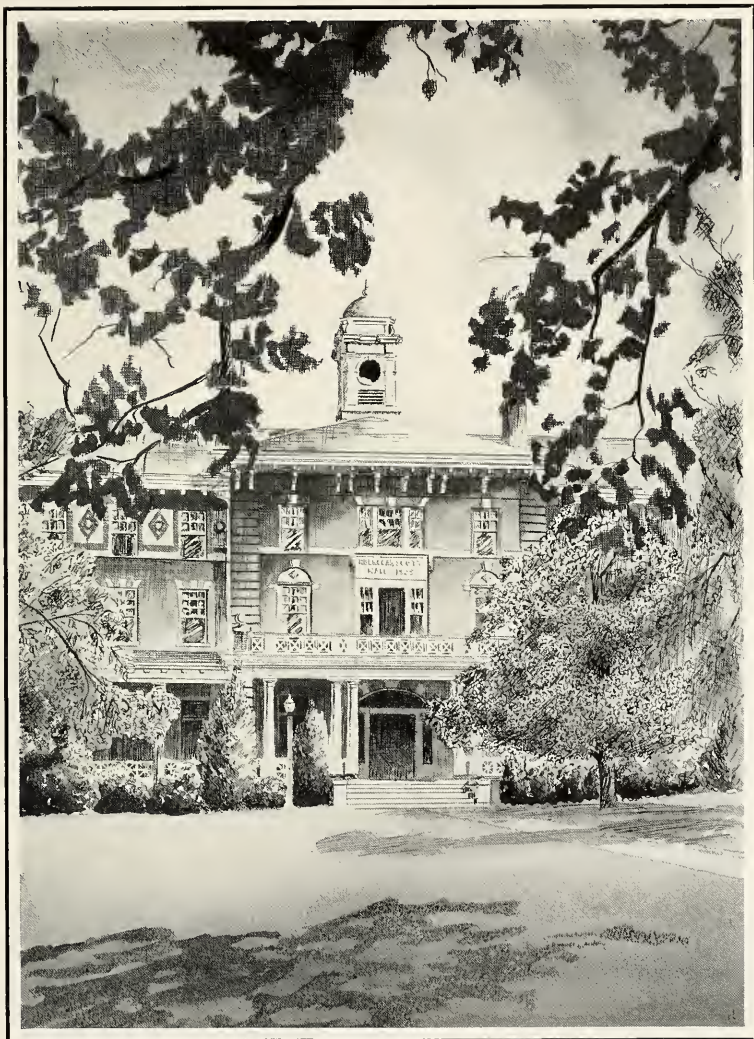


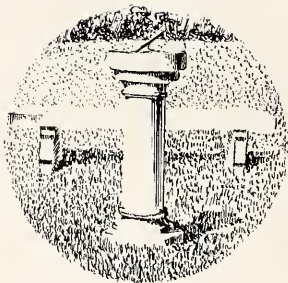
Agnes Scott Hall



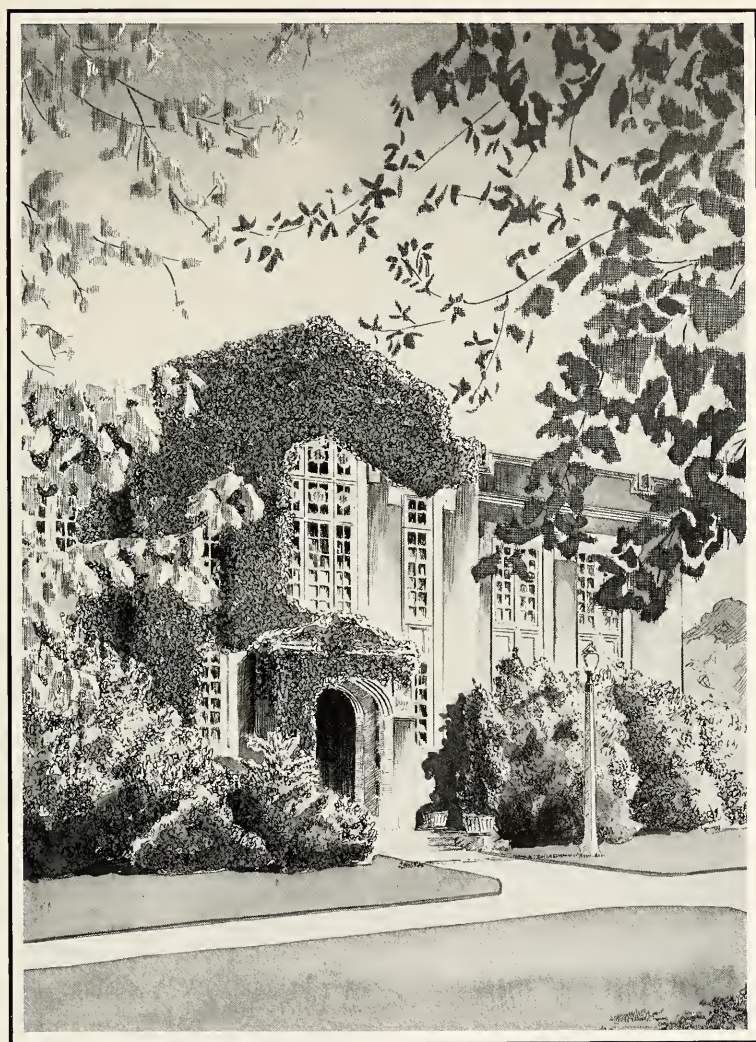


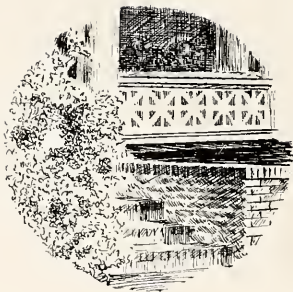
Rebekah Scott Hall





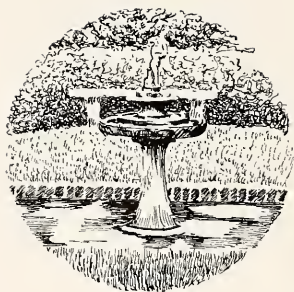
*Murphy Candler
Student Building*



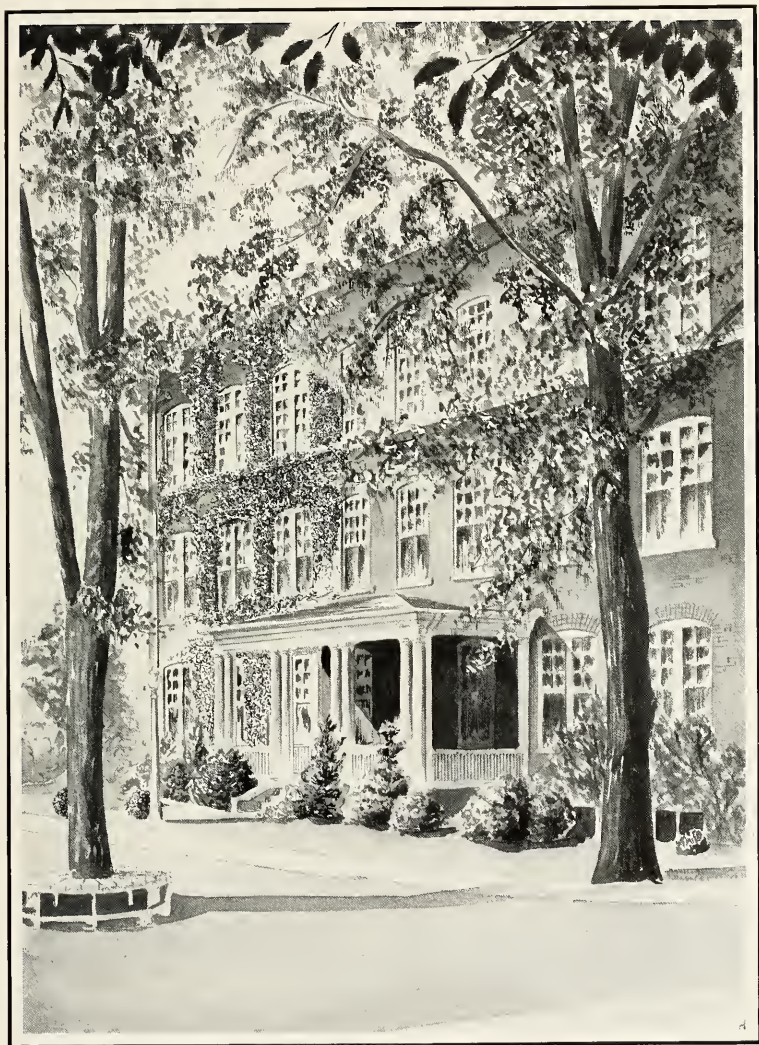


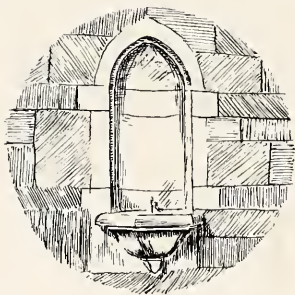
*The Colonnade and
Rebekah Scott*



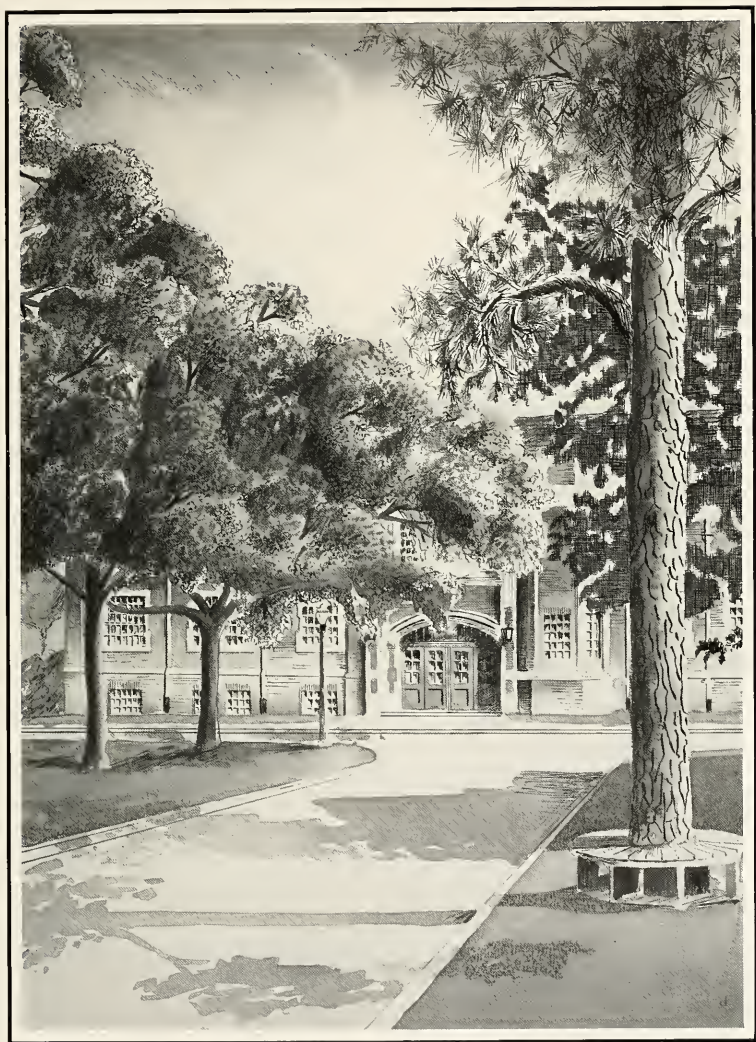


Lowry Science Hall





Bucher Scott Gymnasium



BOARD OF TRUSTEES

J. K. ORR, Chairman	Atlanta
W. C. VEREEN	Moultrie, Ga.
J. S. LYONS	Atlanta
F. M. INMAN	Atlanta
MRS. SAMUEL M. INMAN	Atlanta
MISS MARY WALLACE KIRK	Tuscumbia, Ala.
D. P. McGEACHY	Decatur
R. O. FLINN	Atlanta
H. T. McINTOSH	Albany, Ga.
J. R. McCAIN	Decatur
J. J. SCOTT	Decatur
G. SCOTT CANDLER	Decatur
E. D. BROWNLEE	Sanford, Fla.
J. BULOW CAMPBELL	Atlanta
MISS NANNETTE HOPKINS	Decatur
JOHN McMILLAN	Stockton, Ala.
W. J. RUSHTON	Birmingham, Ala.
GEORGE WINSHIP	Atlanta
WARNER H. DuBOSE	Mobile, Ala.
FRANCIS M. HOLT	Jacksonville, Fla.
JOHN A. SIBLEY	Atlanta
T. GUY WOOLFORD	Atlanta
J. A. McCLURE	St. Petersburg, Fla.
MRS. FRANCIS DWYER	Atlanta



Faculty

President



Dr. James Ross McCain

Dr. McCain's intelligent efforts to carry out the high ideals and aims of Agnes Scott have succeeded in bringing to the college scholastic recognition of the highest order and well-deserved honor to himself.

This past year he has been president of the Association of American Colleges. In this capacity he has led meetings of educators in every part of the country; he has made many speeches on various phases and features of modern education. All his activity has been marked by that sincerity, simplicity, and intellectual integrity which have brought him the real respect and admiration of every Agnes Scott student.

THE SIL

Dean



Miss Nannette Hopkins

Miss Hopkins came as a teacher to Agnes Scott soon after its founding; when the Institute became a college she was made Dean; a few years ago she became a member of the Board of Trustees. As an important official, a sympathetic advisor, and a gracious and cultured individual, Miss Hopkins has been known and loved by all Agnes Scott girls. On students and alumnae she has exerted a great influence; she is largely responsible for the development of that Agnes Scott spirit which holds students to the college even after graduation.

QUETTE



Cunningham, Hopkins, McCain, Tart, Stukes, Scandrett

Officers of the Administration have many varied interests besides their routine duties which they perform most efficiently. Seniors all seek the advice and aid of Mr. Stukes, registrar, in getting jobs. Miss Scandrett, assistant dean, made several trips this winter with Miss Palmour, alumnae secretary, visiting and speaking to alumnae groups throughout the South. President McCain, Dean Hopkins, Mr. Cunningham, business manager, and Mr. Tart, treasurer, complete the list of administration officials.

ADMINISTRATION

HISTORY, ECONOMICS, AND SOCIOLOGY



Smith, Raper, Wright, Davidson, Jackson

The three history professors act as advisors to the Current History Forum and work up most interesting programs. In November Miss Smith helped Citizenship Club stage their highly successful presidential election. Dr. Davidson has served this year as president of the campus chapter of Phi Beta Kappa. At the convention of the American Association of University Women in March Miss Jackson was re-elected their director for the South Atlantic section. The department of economics and sociology is headed by Dr. Wright. Dr. Raper, who is secretary of Atlanta's Inter-Racial Commission, teaches sociology. His latest book, "Preface to Peasantry," was published last fall.

FAC

Sydenstricker, Gillespie



Mrs. Sydenstricker and Dr. Gillespie are noted for their great enthusiasm and interest in their subject both in class and out. The Bible Club is sponsored by this department. Dr. Gillespie preaches regularly in North Carolina and is a frequent conductor of chapel exercises. Mrs. Sydenstricker visits Chautauqua each summer to study and has made several trips to the Holy Land to add to her knowledge of the background of her courses.

BIBLE

ENGLISH



Christie, Laney, McKinney, Hayes, Gooch, Leyburn

English is the most popular major subject, and the eight members of that department's faculty take a leading part in all the college activity. Mr. Hayes heads the department and is faculty advisor and coach of Pi Alpha Phi. Miss Laney is chairman of the Lecture Association and is largely responsible for the Association's high reputation. This year Miss Christie served as one of the judges in the Agonistic class contest; she is the sponsor of K. U. B. Miss Gooch is prominent in the Association of Teachers of Speech, and Agnes Scott students under her direction presented two plays at the Southern convention in Nashville in April. Others in the department are Miss McKinney, Miss Preston, Miss Leyburn, and Miss Prettyman.

MODERN LANGUAGES

LTY



Carlson, Hale, Alexander, Crowe, Harn, Cilley

The modern language faculty sponsor the three language clubs which greatly increase the interest in foreign languages on the campus. The French faculty includes Miss Alexander, Miss Carlson, Miss Crowe, and Miss Hale, a sponsor for the class of 1937. Miss Harn is head of the German and Spanish department and Miss Cilley is assistant professor of Spanish. She has published several articles this year in language magazines.

Nelson, Stansfield, Smith, Torrance



Though Latin and Greek are two separate departments with Miss Smith and Miss Torrance as head professors, respectively, Miss Stansfield and Miss Nelson teach in both. The departments cooperate with each other on many occasions, including having a picture together, and jointly sponsoring Eta Sigma Phi, the honorary classical society at Agnes Scott.

ANCIENT LANGUAGES

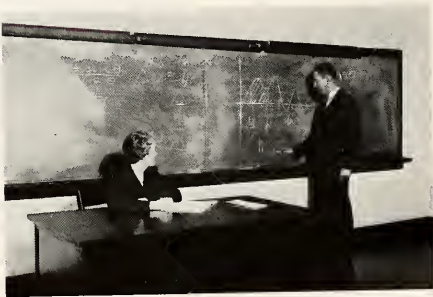
SCIENCES



BACK ROW: Holt, MacDougall, Runyan, Christian
FRONT ROW: Gilchrist, Vardell, Miller

Combining the departments of biology, chemistry, and physics makes a very prominent faculty group. Heading the biology department is Miss MacDougall who is known here and abroad for her research work on the protozoa. She and Dr. Runyan, botany professor, were among the speakers at the annual meeting of the Georgia Academy of Science this spring. Miss Miller and Miss Vardell discussed some of his research. Dr. Christian who is professor of physics work at the American Physical Society convention in North Carolina in February. Mr. Holt is professor of chemistry, and Miss Gilchrist is assistant professor.

MATHEMATICS



Gaylord, Robinson

Dr. Robinson heads the mathematics department and willingly assists many campus organizations with their financial problems. For the past two years he has been secretary and treasurer of the Southeastern Section of the Mathematical Association of America; at the 1937 convention he presented a paper at one of the sessions. Miss Gaylord, assistant professor, is much in demand to advise and assist in college activities. She is a sponsor for the class of 1937.

When the new quarter system called for a change in the psychology courses, Miss Dexter and Miss Omwake wrote a textbook to fit their plans for the altered general psychology classes and put it to use this year. This department which combines psychology, education, and philosophy is headed by Mr. Stukes and offers a wide variety of courses from the practical and experimental to the highly theoretical.

PSYCHOLOGY



Omwake, Dexter, Stukes

MUSIC



Dieckmann, Bartholomew, Johnson, Stokes

The music faculty is responsible for many entertainments enjoyed by the community. The faculty recital given each fall with two piano selections by Mr. Dieckmann and Miss Bartholomew and violin solos by Mrs. Stokes is one. Others include the programs presented by the special chorus and the glee club directed by Mr. Johnson, and the glee club's annual Gilbert and Sullivan opera in the spring. In addition to writing the arrangements for the string ensemble which he directs, Mr. Dieckmann has written and published several anthems this year.

LIBRARY



Nunnally, Colvin, Hanley

Built to grow with Agnes Scott for many years to come, the new library is the pride and joy of the entire college. Miss Hanley has done an outstanding job in supervising the building and selecting the new equipment. Studying there in the modern manner is proving more popular than the old way. With Miss Nunnally and Miss Greenfield, newcomers this year, Miss Hanley and Miss Colvin make up the trained library staff.

ULTY



Sweet, Dozier, Haynes, Mitchell, Wilburn

Miss Wilburn, associate professor of physical education was elected head of the Physical Directors Association in the South at their meeting this spring. Besides teaching some of the regular team and individual sports Miss Wilburn and Miss Haynes assist Miss Dozier in directing the annual May Day program of the college. Dr. Sweet, the college physician, heads this department, and Miss Mitchell is another of the teachers.

PHYSICAL EDUCATION

INFORMAL FACULTY SNAPS



TOP ROW: Mr. Johnson; Miss Gooch; Miss Hale confers with the electrician; Dr. Raper's smiling face. SECOND ROW: Miss Lewis is camera shy; Dr. Davidson and Dr. Christian seem to be harmonizing; Dr. Davidson, again, with the new Botany professor, Dr. Kuryan; how did this snow scene get in? THIRD ROW: Miss Crowe; Miss Nelson and Mrs. Ansley return from lunch. FOURTH ROW: Mrs. Sydenstricker with her jar of cream; Miss Hopkins; Rebekah's "house mother"; Miss Haynes ready for riding class.

BOOK TWO

Classes . . .





Marshes

The "Wonderland of Nature" is found in the southern part of Georgia. The dusky moss-covered trees reflecting into the still cypress-stained water in which grow lilies and verdant moss and grasses is a vision too beautiful for any paint brush except Nature's. Okefenokee Swamp is the center of "the pulp and paper forests," being a natural resource—as well as The "Fragment of Paradise" which it has been so fittingly termed.





Senior Class

S
S
E
M
P
O
N
S
O
R
S
S



Gaylord, Runyan, Hale

- MISS LESLIE GAYLORD Sponsor
- MISS LOUISE HALE Sponsor
- RUTH RUNYAN Mascot

S
R
S
S
S

RS

THE
F
F
O

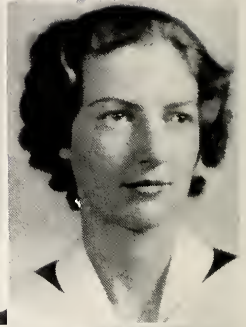


- Alexander, Jester, Summers
- MARTHA SUMMERS President
- ELOISA ALEXANDER Vice-President
- DOROTHY JESTER Secretary-Treasurer

SENIORS



ELOISA BAXER ALEXANDER
ATLANTA, GA.
English



CECILIA KATHERINE BAIRD
ATLANTA, GA.
English

FRANCES LUCILE BARNETT
SUMTER, S. C.
Economics and Sociology



FRANCES CROSWELL BELFORD
SAVANNAH, GA.
History



MARTHA SUMMERS . . . Martha has been class president both her Junior and her Senior years. She is also president of Chi Beta Phi Sigma.

THE SI

SENIORS



EDITH BELSER
SUMTER, S. C.
English

FAYE LOUISE BROWN
ATLANTA, GA.
Spanish

MARY BUCHHOLZ
GAINESVILLE, FLA.
English

DOROTHY CABANISS
COLUMBUS, GA.
Psychology

ISABEL McCAIN . . . Isabel is a campus leader. She is president of Y. W. C. A., member of Mortar Board, and a Phi Beta Kappa. Since her work on the Freshman stunt in 1933, she has been an outstanding member of her class.



QUETTE

SENIORS



LUCILLE CAROLYN CAIRNS

GAINESVILLE, FLA.

History



VIRGINIA A. CALDWELL

DANVILLE, KY.

History

FRANCES CARY

GREENVILLE, S. C.

Bible, Economics, Sociology



CORNELIA CHRISTIE

DECATUR, GA.

History, Spanish



BETTY WILLIS . . . Betty made a grand house-president of Rebekah—not once did her red hair get the best of her, and the dormitory was comparatively quiet. Her quiet and steady nerves will be an asset in her future career as a doctor.

THE SI

SENIORS



ETHEL ANN COX
ATLANTA, GA.
Chemistry

KATHLEEN LAURA DANIEL
DECATUR, GA.
English

LUCILE DENNISON
ATLANTA, GA.
History

MARIAN ELIZABETH ESPY
DOTHAN, ALA.
English

MARY ALICE NEWTON . . . Being house-president of Inman Mary Alice has had her hands full of Freshman quarrels and homesickness but not to be daunted by it. She has a good voice and had a lead in the operetta this year.



QUETTE

SENIORS



NANCY JANE ESTES
GAY, GA.
Chemistry, Mathematics

CHARLINE FOX FLEECE
ATLANTA, GA.
English, History

MICHELLE TICKNOR FURLOW
ALBANY, GA.
Psychology

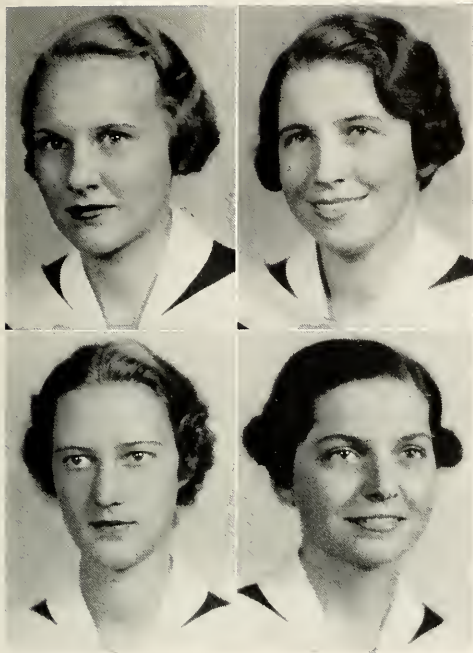
ANNIE LAURA GALLOWAY
ATLANTA, GA.
Mathematics



MARIE STALKER . . . Marie has made a name for herself in athletics and for playing men's parts in skits and stunts on the campus. She is secretary of Mortar Board and an all-around good gal.

THE SI

SENIORS



MARY CAROLYN GILLESPIE
ATLANTA, GA.
Economics, Sociology

NELLIE MARGARET GILROY
ATLANTA, GA.
English

JUDITH GRACEY
AUGUSTA, GA.
Psychology

ALICE HANNAH
CASS, W. VA.
Botany

ALICE HANNAH . . . As a president of student body they make them no better than Hannah. Active in all campus affairs, member of the majority of organizations, in numerous conferences with faculty members—she has had her hands full this year and has been a success in everything.



QUETTE

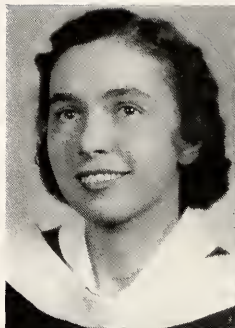
SENIORS



MARGARET HANSELL

ATLANTA, GA.

French



FANNIE BACHMAN HARRIS

ROME, GA.

English

MARTHA LEE HEAD

DECATUR, GA.

History



ELIZABETH HOLLIS

SAUTEE, GA.

Economics, Sociology



MARY GILLESPIE . . . Capable business manager of the SILHOUETTE—she worked hard and got results.

THE SI

1941

SENIORS



BARTON JACKSON
CHARLOTTE, N. C.
Psychology

DOROTHY JESTER
LYNCHBURG, VA.
Mathematics

ELLENDER JOHNSON
ATLANTA, GA.
History

MARTHA JOSEPHINE JOHNSON
LITHONIA, GA.
Botany

BETTY HOLLIS . . . Betty has been on Y. W. Cabinet only two years, but this year she was vice-president. She was a splendid worker among the Freshmen with her charming and understanding ways.



QUETTE

65905

SENIORS

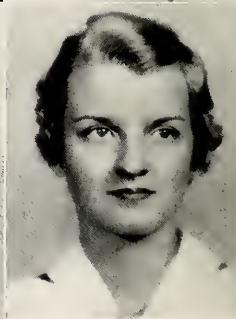


MARY LANDRUM JOHNSON
ATLANTA, GA.
French, Spanish



SARAH DuBOSE JOHNSON
WASHINGTON, GA.
Latin

CATHARINE E. JONES
BALL GROUND, GA.
History



MOLLY LaFON JONES
DECATUR, GA.
Bible



NELLIE MARGARET GILROY . . . If anyone ever needed a "cute" or "clever" article to be written, Nellie Margaret was always the first person asked. She had ideas that stood out. She is president of Pi Alpha Phi and made a good team with Brooks Spivey.

THE SI

SENIORS



RACHEL ELIZABETH KENNEDY

NEWBERRY, S. C.

Latin

MARY KING

DECATUR, GA.

Latin

JEAN FRANCES KIRKPATRICK

ANDERSON, S. C.

French

MARY ELIZABETH KNEALE

ATLANTA, GA.

German

ELIZABETH ESPY . . . "Punkin" is one of those literary-minded girls and one whom the Freshmen idealize. Her work as editor of the AURORA deserves honorable mention.



QUETTE

SENIORS



FLORENCE LASSETER

FITZGERALD, GA.

English



DOROTHY CLARA LEE

LITHONIA, GA.

English

LUCRETIA WAYVE LEWIS

CLEARWATER, FLA.

Chemistry



FLORENCE LITTLE

ATLANTA, GA.

History, Mathematics



JULIA THING . . . Tennis, basketball, hockey, and all other sports are Julia's hobbies. Last year she was treasurer and this year president of A. A. Her laugh is a campus "call."

THE SI

SENIORS

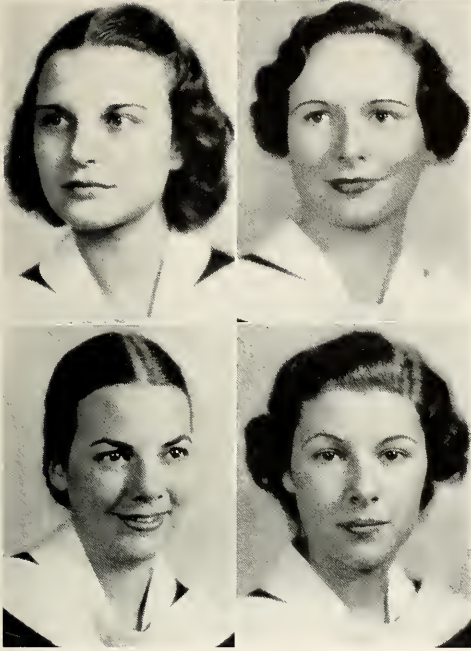


VIVIENNE LANDERS LONG
DECATUR, GA.
Chemistry

MARY MALONE
ATLANTA, GA.
History

JUNE MATTHEWS
SMYRNA, GA.
English, History

MARY CATHERINE MATTHEWS
KEYSVILLE, GA.
History



LAURA STEELE . . . Laura's work as editor of the AGGIE meant she had to live on the campus this year. Maybe Mortar Board had something to do with this, too. Anyway, the boarders were glad to have her.



QUETTE

SENIORS

KATHERINE LOUISE MAXWELL

ATLANTA, GA.

History

ISABEL McCAIN

DECATUR, GA.

English

FRANCES McDONALD

ATLANTA, GA.

Zoology

ENID MIDDLETON

BIRMINGHAM, ALA.

English, Latin



FRANCES CARY . . . No one knows how Dr. Raper could have gotten along without Frances' help in correcting papers. She mustn't be forgotten for her goal-guarding in hockey either!

THE SI

SENIORS



MARY ELIZABETH MORROW

ALBEMARLE, N. C.

History

PAULINE MOSS

ROYSTON, GA.

Psychology

ORA MACDONALD MUSE

DECATUR, GA.

English

MARY ALICE NEWTON

DOTHAN, ALA.

Economics, Sociology

ELOISA ALEXANDER . . . For two years she has done a fine job as May Day Chairman, besides adding to the beauty of the court herself. Note the feature section of this annual for some more of her good work.



QUETTE

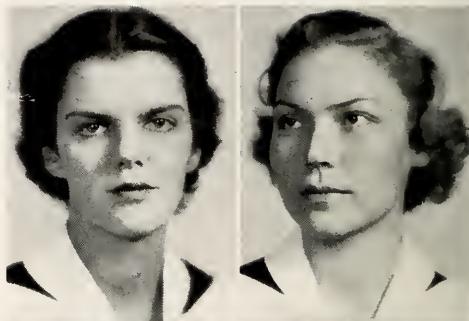
SENIORS



ROSE EVERETT NORTHCROSS

TUPELO, MISS.

English



ELLEN ANNE O'DONNELL

ATLANTA, GA.

English



MARY ERNESTE PERRY

NASHVILLE, GA.

Psychology

VIRGINIA RUSTELLE POPLIN

DECATUR, GA.

Psychology



MARGARET WATSON . . . College publicity woman is Margaret's job. She kept Atlanta informed through her weekly articles in the Journal. Hats off to Margaret, too, for her work as faculty editor of this annual.

THE SI

SENIORS



KATHRYN MARGARET PRINTUP

ATLANTA, GA.

French

ISABEL RICHARDSON

WASHINGTON, GA.

Economics, Sociology

MARJORIE MOATE SCOTT

MILLEDGEVILLE, GA.

Biology

NELL DOUGLAS SCOTT

ATLANTA, GA.

History

LUCILLE CAIRNS . . . Good ole Lucille, she will do the labor. You can tell by the many working offices she holds, among which are secretary of Blackfriars, vice-president of Citizenship Club and of K. U. B., and secretary for the SILHOUETTE.



OUETTE

SENIORS



RACHEL SHAMOS
ATLANTA, GA.
Chemistry, Mathematics

BROOKS SPIVEY
ATLANTA, GA.
English

MARIE STALKER
ATLANTA, GA.
History

FRANCES CORNELIA STEELE
ANNISTON, ALA.
Economics, Sociology



SARAH JOHNSON . . . "Have you paid your budget?"—
"Last call before black-list goes up" are Sarah's only phrases.
But everyone must hand it to her for her good work as stu-
dent treasurer this year.

THE SI

SENIORS



LAURA STEELE
ATLANTA, GA.
History

VIRGINIA STEPHENS
AUGUSTA, GA.
Biology

MARY FAIRFAX STEVENS
HUNTSVILLE, ALA.
History

MARTHA MORRIS SUMMERS
ATLANTA, GA.
Biology

MARY JANE TIGERT . . . Mary Jane is vice-president of Student Government, vice-president of Mortar Board, and social chairman of Lecture Association. Her work at the first of the year, instructing the sponsors and initiating the Freshmen to Agnes Scott, was only the beginning of her work, and she has been steadily at it all year.

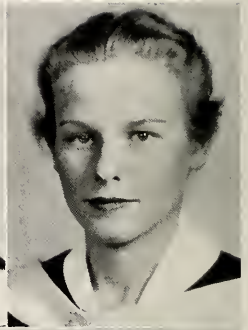


QUETTE

SENIORS

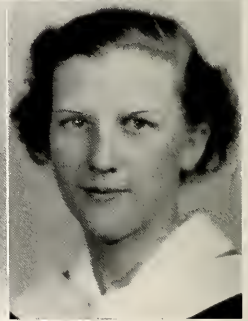
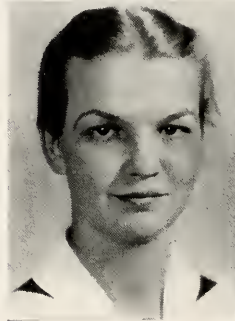


LENA SWEET
ATLANTA, GA.
Chemistry



ALICE E. TAYLOR
ATLANTA, GA.
History

JULIA LIBBY THING
ASHEVILLE, N. C.
English, French



MARY JANE TIGERT
GAINESVILLE, FLA.
English, History



LUCILE DENNISON . . . Beauty and brains are the adjectives belonging to May Queen and Phi Beta Kappa Dennison. She has always been in May Court and always on Honor Roll. President of Day Students is to her credit, also.

THE SI

SENIORS



MILDRED TILLY
DECATUR, GA.
Chemistry, Mathematics

EULA TURNER
ATLANTA, GA.
History, Mathematics

EVELYN WALL
ATLANTA, GA.
French

FLORENCE LASSETER . . . Florence had her first dose of being an "exec" member this year because she was Student Recorder and Senior representative combined. Very frequently you see her going to or coming from the swimming pool, too.

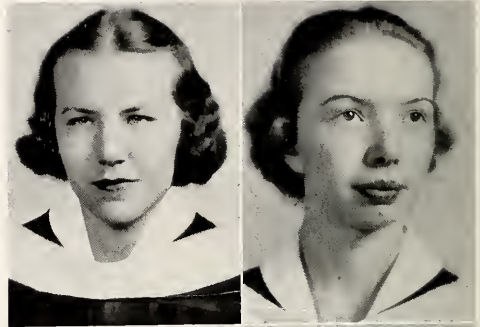


QUETTE

SENIORS



KATHRYN BOWEN WALL
ATLANTA, GA.
Latin



MARGARET JOSEPHINE WATSON
GREENWOOD, S. C.
Mathematics



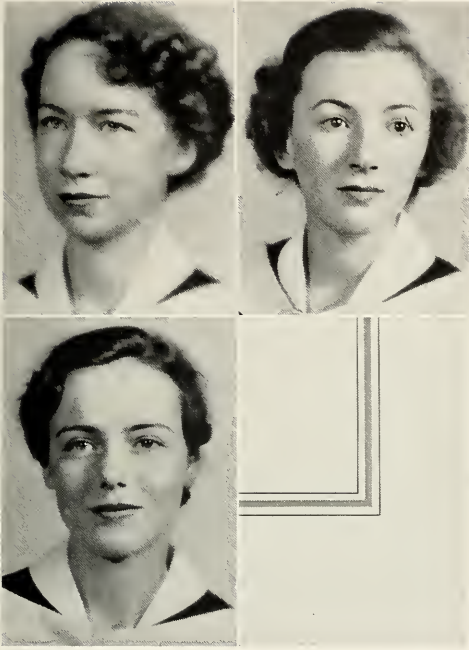
JESSIE ELIZABETH WILLIAMS
ATLANTA, GA.
History, Mathematics



CHARLINE FLEECE . . . Charline received her A. S. letter her Junior year, regardless of the fact that she was a Converse girl her Freshman year. In addition she is president of Lecture Association and still has time for—Jimmy!

THE SI

SENIORS



BETTY GORDON WILLIS

CULPEPER, VA.

Chemistry

MARY WILLIS

AUGUSTA, GA.

English

FRANCES WILSON

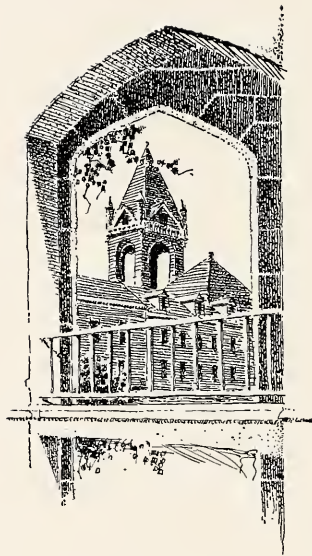
ROCKFORD, ILL.

History

FANNIE B. HARRIS . . . Fannie B. is president of Mortar Board and house-president of Main. Her willingness to work and her pleasing manner have made her liked by all.



QUETTE





Junior Class

J
U
N
I
O
R



O
F
F
I
C
E
R
S

King, Davis, Turner

ELIZA KING
President

JANE TURNER
Vice-President

MILDRED DAVIS
Secretary-Treasurer

THE SI



JEAN BARRY ADAMS
Charlotte, N. C.

JEAN AUSTIN
Chattanooga, Tenn.

TOMMY RUTH BLACKMON
Gainesville, Fla.

NELL ALLISON
Ellisville, Miss.

GENEVIEVE BAIRD
Atlanta, Ga.

ELIZABETH BLACKSHEAR
Atlanta, Ga.

KATHERINE BRITTINGHAM
Portsmouth, Va.

ELEANOR BURNS
Charles Town, W. Va.

ELSIE BLACKSTONE
East Point, Ga.

MARTHA PEEK BROWN
Cartersville, Ga.

QUETTE

JUNIORS



ALICE CALDWELL
Bristol, Tenn.

MYRL CHAFIN
McDonough, Ga.

LAURA COIT
Richmond, Va.

FRANCES CASTLEBERRY
Atlanta, Ga.

JEAN CHALMERS
Atlanta, Ga.

SARA CORBITT
Scottdale, Ga.

MILDRED DAVIS
Orlando, Fla.

DORIS DUNN
Decatur, Ga.

ELIZABETH COUSINS
Decatur, Ga.

MARGARET DOUGLAS
Davidson, N. C.

THE SI



NELLE SCOTT EARTHMAN
Decatur, Ga.

ELOISE ESTES
Decatur, Ga.

ANNA KATHERINE FULTON
Eutaw, Ala.

GOUDYLOCH ERWIN
Davidson, N. C.

MARY LILLIAN FAIRLEY
Richmond, Va.

MARY E. GALLOWAY
Atlanta, Ga.

JANE GUTHRIE
Louisville, Ky.

HIBERNIA HASSELL
McAllen, Tex.

MARTHA ALICE GREEN
Harlem, Ga.

CAROL HALE
Atlanta, Ga.

QUETTE

JUNIORS



NELL HEMPHILL

Petersburg, Va.

MARY McCANN HUDSON

Greenville, S. C.

ANN WORTHY JOHNSON

Rome, Ga.

RUTH HERTZKA

Atlanta, Ga.

REGINA DORIS HURWITZ

Atlanta, Ga.

HORTENSE JONES

Atlanta, Ga.

OLA KELLY

Monticello, Ga.

ELIZA LYDIA KING

Columbia, S. C.

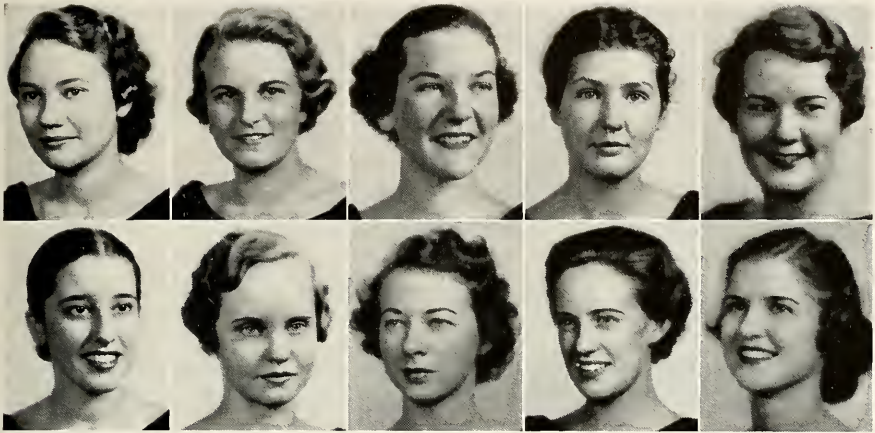
WINIFRED KELLERSBERGER

Belgian Congo, Africa

MARY ANNE KERNAN

Atlanta, Ga.

THE SI



FRANCES LEE
Atlanta, Ga.

ELLEN LITTLE
Louisville, Ga.

JEANNE MATTHEWS
Atlanta, Ga.

MARGARET LIPSCOMB
Clio, S. C.

DOROTHY MARTHA LONG
Toledo, Ohio

MARGARET MORRISON
Atlanta, Ga.

JACQUELYN McWHITE
Atlanta, Ga.

NANCY MOORER
Walterboro, S. C.

LETTIE WARREN McKAY
Union Springs, Ala.

BERTHA MOORE MERRILL
Eufaula, Ala.

QUETTE

JUNIORS



MARY PRIMROSE NOBLE
Smithfield, N. C.

MARJORIE RAINEY
Decatur, Ga.

ALICE BACON REINS
College Park, Ga.

MARY ELIZABETH PAST
Chattanooga, Tenn.

HELEN RAMSEY
Darlington, S. C.

FRANCES ROBINSON
Dayton, Tenn.

SAMILLE SAYE
Augusta, Ga.

BEATRICE SEXTON
Bessemer City, N. C.

JOYCE ROPER
Spartanburg, S. C.

ELISE SEAY
Macon, Ga.

THE SI



ELIZABETH SKINNER
Augusta, Ga.

MARY VENETIA SMITH
Columbia, S. C.

GRACE TAZEWELL
Norfolk, Va.

SARA BEATY SLOAN
Belmont, N. C.

VIRGINIA SUTTENFIELD
Atlanta, Ga.

JULIA TELFORD
Abbeville, S. C.

MARY NELL TRIBBLE
Hot Springs, Ark.

JANE TURNER
Atlanta, Ga.

ANNE THOMPSON
Richmond, Va.

VIRGINIA DORIS TUCKER
Decatur, Ga.

QUETTE

JUNIORS



ELIZABETH READING WARDEN

Decatur, Ga.

ELLA VIRGINIA WATSON

Greenwood, S. C.

ELSIE WEST

Newport News, Va.

EDNA WARE

Greenville, S. C.

ZOE WELLS

Decatur, Ga.

DIXIE WOODFORD

Toccoa, Ga.

JANE COBB WYATT

Easley, S. C.



Sophomore Class

S
O
P
H
O
M
O
R
E



O
F
F
I
C
E
R
S

Crowell, Lyle, Hamilton

ANNIE LEE CROWELL
President

DOUGLAS LYLE
Vice-President

JANE MOORE HAMILTON
Secretary-Treasurer

THE SI

SOPHOMORES



ALICE EMELYN ADAMS

Elberton, Ga.

CAROLINE ARMISTEAD

Rockingham, N. C.

BETTY AYCOCK

Atlanta, Ga.

SARAH BASKIN

Culverton, Ga.

HENRIETTA BLACKWELL

Laurens, S. C.

RUTH HOLT ANDERSON

Burlington, N. C.

BETTY AUBERRY

Jacksonville, Fla.

JEAN BAILEY

Atlanta, Ga.

ADELAIDE BENSON

Jacksonville, Fla.

SUSAN BRYAN

Reynolds, Ga.

CATHERINE M. CALDWELL

Winnsboro, S. C.

CAROLINE CARMICHAEL

McDonough, Ga.

SARA CARTER

Bamberg, S. C.

MILDRED WOODS COIT

Richmond, Va.

ESTHER BYRNES

Atlanta, Ga.

JANE CARITHERS

Winder, Ga.

LELIA CARSON

Rogersville, Tenn.

ALICE CHEESEMAN

Decatur, Ga.

QUETTE

SOPHOMORES



ANNIE LEE CROWELL Nashville, Tenn.	SARAH J. CUNNINGHAM Atlanta, Ga.	JANE DRYFOOS New York, N. Y.	CATHERINE A. FARRAR Avondale Estates, Ga.	JEANNE FLYNT Decatur, Ga.
---------------------------------------	-------------------------------------	---------------------------------	--	------------------------------

ESTELLE WYSE CUDDY Mt. Holly, N. C.	LUCY HILL DOTY Winnsboro, S. C.	GRACE DUGGAN Hawkinsville, Ga.	MARY VIRGINIA FARRAR Manchester, Tenn.
--	------------------------------------	-----------------------------------	---

CHARLOTTE FRENCH Decatur, Ga.	ELIZABETH FURLOW Atlanta, Ga.	MARY E. GARNER Lawrenceville, Ga.	DOROTHY GRAHAM Bluefield, W. Va.	ELEANOR TRACY HALL Bluefield, W. Va.
----------------------------------	----------------------------------	--------------------------------------	-------------------------------------	---

HELEN JOAN FRIEDLANDER Winder, Ga.	ELIZABETH GALBREATH Frankfort, Ky.	SUSAN BROOKS GOODWYN Newnan, Ga.	MARY FRANCES GUTHRIE Louisville, Ky.
---------------------------------------	---------------------------------------	-------------------------------------	---

THE SI

SOPHOMORES



JANE MOORE HAMILTON

Dalton, Ga.

JUNE HARVEY

Atlanta, Ga.

VIRGINIA U. HILL

Atlanta, Ga.

ANNE HOWELL

Thomson, Ga.

CATHERINE IVIE

Greenville, S. C.

EMILY CAROLYN HARRIS

Atlanta, Ga.

LOUISE JACQUELINE HAWKS

Petersburg, Va.

MARY WILLS HOLLINGSWORTH

Florence, Ala.

CORA KAY HUTCHINS

Atlanta, Ga.

PHYLLIS JOHNSON

Elberton, Ga.

KATHERINE F. JONES

Winder, Ga.

ELIZABETH J. KENNY

Hammond, La.

HELEN M. KIRKPATRICK

Dacula, Ga.

VIRGINIA BELLE KYLE

Charleston, W. Va.

VIRGINIA GLORIA JOHNSON

Turin, Ga.

KATHLEEN KENNEDY

Fort Bragg, N. C.

FRANCES ESTELLE KING

Woodland, Ga.

EUNICE ELIZABETH KNOX

Pickens, S. C.

QUETTE

SOPHOMORES



MARY JOSEPHINE LARKINS

Mobile, Ala.

MARY LOCKSLEY LONG

Rutherfordton, N. C.

DOUGLAS LYLE

College Park, Ga.

MARTHA HUNTER MARSHALL

Americus, Ga.

HELEN ELAINE LICHTEN

Atlanta, Ga.

REBECCA LEE LOVE

LaFayette, Ga.

ELLA HUNTER MALLARD

Greenville, S. C.

FLORA MacGUIRE

Montgomery, Ala.

EMILY HALL MacMORELAND

Atlanta, Ga.

MARY WELLS McNEILL

Florence, S. C.

VIRGINIA B. MORRIS

Decatur, Ga.

MARY ELIZABETH MOSS

Nashville, Tenn.

EMMA MOFFETT McMULLIN

New York, N. Y.

MARIE MERRITT

Clarksdale, Miss.

HELEN LUCILE MOSES

Sumter, S. C.

MARY RUTH MURPHY

Hot Springs, Ark.

THE SI

SOPHOMORES



CAROLYN MYERS

Avondale Estates, Ga.

AMELIA TODD NICKELS

Decatur, Ga.

NELLE WELBORN O'DELL

Atlanta, Ga.

MARGARET OLSEN

Atlanta, Ga.

ANNIE HOUSTON NEWTON

Dothan, Ala.

MARY HILL OATLEY

Atlanta, Ga.

ESTHÈRE JONTÉ OGDEN

New Orleans, La.

LOU PATE

Newbern, Ga.

KATHRYN PEACOCK

Decatur, Ga.

JULIA ANTOINETTE PORTER

Covington, Ga.

ANNE PURNELL

Charlotte, N. C.

JEANNE REDWINE

Fayetteville, Ga.

MARY ANN PITTARD

Decatur, Ga.

MARJORIE WATT PRESSLY

Belmont, N. C.

MAMIE LEE RATLIFF

Sherard, Miss.

OLIVE RIVES

Atlanta, Ga.

QUETTE

SOPHOMORES



HELEN RODGERS

Atlanta, Ga.

ADELAIDE HAYDEN SANFORD

Mocksville, N. C.

JULIA PATTERSON SEWELL

Atlanta, Ga.

MARY PENNEL SIMONTON

Covington, Tenn.

MIRIAM ANTOINETTE SANDERS

Greenville, S. C.

EVELYN SEARS

St. Louis, Mo.

AILEEN SHORTLEY

Columbia, Tenn.

HELEN NERINE SIMPSON

Atlanta, Ga.

ELIZABETH JORDAN SMITH

Atlanta, Ga.

BERYL FOLMAR SPOONER

Donalsonville, Ga.

SELMA STEINBACH

Carrallton, Ga.

RUTH CUMMINGS TATE

Banner Elk, N. C.

JANE KATHERINE SMOLLEN

Atlanta, Ga.

MARY ELEANOR STEELE

Statesville, N. C.

BETTY ANN STEWART

Winchester, Tenn.

MARY FRANCES THOMPSON

Decatur, Ga.

THE SI

SOPHOMORES



KATHRYN PROUT TOOLE

Hegins, Penn.

VIRGINIA ELIZABETH TUMLIN

Cave Spring, Ga.

ELINOR RUTH TYLER

Florence, S. C.

FLORENCE FANNON WADE

Cornelia, Ga.

MARLISE TORRANCE

Sanford, Fla.

EMMY LOU TURCK

Philadelphia, Penn.

HARRIETTE vonGREMP

Decatur, Ga.

LOIS ANN WALTON

Palatka, Fla.

ANNE DUPUY WATKINS

Culpeper, Va.

CARY ROGERS WHEELER

LaFayette, Ala.

ELINOR WILKINSON

Atlanta, Ga.

MARGARET EVANS WILLIS

Roanoke, Va.

ELIZABETH H. WHEATLEY

Greenwood, Miss.

MARY ELLEN WHETSELL

Columbia, S. C.

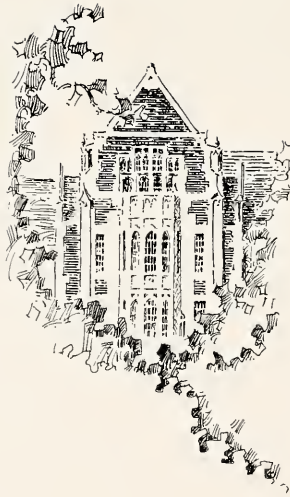
ELIZABETH M. WILLIAMS

Hickory, N. C.

LOUISE YOUNG

Souchow, Ku, China

QUETTE





Freshman Class

F
R
E
S
H
M
A
N



O
F
F
I
C
E
R
S

Crisp, Forman, Slack

RUTH SLACK
President

RUTH CRISP
Vice-President

CAROLYN FORMAN
Secretary-Treasurer

THE SI

FRESHMEN



FRANCES ABBOTT
Louisville, Ga.

JOSEPHINE ELIZABETH ALLEN
West Point, Ga.

ANNE ELIZABETH ANSLEY
Atlanta, Ga.

MARY E. ARNOLD
Atlanta, Ga.

ELIZABETH ALDERMAN
Atlanta, Ga.

CAROLYN ALLEY
Dalton, Ga.

SHIRLEY F. ARMENTROUT
Goldsboro, N. C.

CARRIE GENE ASHLEY
Ellenton, S. C.

MARY OLIVE AUGER
Decatur, Ga.

MARGARET BARNES
Ivy Depot, Va.

MARGARET BENNETT
Sanford, Fla.

ANNA MARGARET BOND
Atlanta, Ga.

BETSY BANKS
Winchester, Tenn.

EVELYN BATY
Birmingham, Ala.

MARJORIE BOGGS
Shreveport, La.

REBECCA BOORSTEIN
Atlanta, Ga.

MARGARET BRIDGES
Atlanta, Ga.

BARBARA LOUISE BROWN
Charleston, W. Va.

MARY KATE BURRUSS
Atlanta, Ga.

EMILY JEANETTE CARROLL
East Point, Ga.

JOAN FOUCHAUX BRINTON
Bryn Mawr, Penn.

MARY VIRGINIA BROWN
Winter Garden, Fla.

INEZ CALCUTT
Fayetteville, N. C.

RACHEL CAMPBELL
Mansfield, Ga.

QUETTE

FRESHMEN



HELEN CARSON
Harriman, Tenn.

MARGARET CHRISTIE
Decatur, Ga.

CORNELIA COOK
College Park, Ga.

ADA NATION CORDES
Atlanta, Ga.

ERNESTINE CASS
Tifton, Ga.

VIRGINIA COFER
Decatur, Ga.

EVA GARY COPELAND
Columbia, S. C.

RUTH CRISP
Lenoir, N. C.

MARY WINSTON CROCKETT
University, Va.

ELIZABETH DAVIS
Atlanta, Ga.

MARY LOUISE DOBBS
Atlanta, Ga.

LILLIE BELLE DRAKE
Union City, Ga.

MARGARET CURRIE
Mullens, W. Va.

MARY ELIZABETH DIXON
Columbia, S. C.

ELOISE DONKLE
Greenville, S. C.

REBECCA DRUCKER
McCormick, S. C.

CAROLYN DuPRE
Gadsden, Ala.

ANNE ENLOE
Dillsboro, N. C.

RUTH EYLES
Atlanta, Ga.

MARTHA FITE
Dalton, Ga.

NELL ECHOLS
Atlanta, Ga.

MARGARET EVERHART
Bedford, England

JOAN FAYSSOUX
Winnsboro, S. C.

CAROLYN FORMAN
Birmingham, Ala.

THE SI

FRESHMEN



MARY EVELYN FRANCIS
Clearwater, Fla.

MARION FRANKLIN
Swainsboro, Ga.

RENÉE GÉRARD
Mexico, Districte-Fed.

SARAH ALICE GRAY
Columbus, Ga.

ANNETTE FRANKLIN
Statesboro, Ga.

HARRIET FULLER
Atlanta, Ga.

MARY LANG GILL
Salisbury, N. C.

NETTIE GREER
Atlanta, Ga.

SAM OLIVE GRIFFIN
Decatur, Ga.

SARAH FRANCES GROVES
Byromville, Ga.

PENN HAMMOND
Atlanta, Ga.

POLLY HEASLETT
Birmingham, Ala.

WILMA GRIFFITH
Atlanta, Ga.

LORRAINE GUINN
Ducktown, Tenn.

FRANCES HAMPTON
Clearwater, Fla.

MARY REED HENDRICKS
Athens, Ala.

JANE HERZFELD
New York, N. Y.

BARBARA HOLLAND
Newnan, Ga.

MARGARET JANE HOPKINS
Gainesville, Fla.

ANITA HOWARD
Nashville, Ga.

HAZEL HIRSCH
Atlanta, Ga.

BRYANT L. HOLSENBECK
Atlanta, Ga.

ELIZABETH HORNE
St. George, S. C.

BETTY ANN HUBBARD
Marion, S. C.

QUETTE

FRESHMEN



LOUISE HUGHSTON
Spartanburg, S. C.

ELEANOR HUTCHENS
Huntsville, Ala.

MILDRED JOSEPH
Jacksonville, Fla.

JANE KNAPP
Atlanta, Ga.

GEORGIA HUNT
Atlanta, Ga.

GERTRUDE BETTY JONES
Bryonville, Ga.

RUTH KAPLAN
Savannah, Ga.

SOPHIE LaBORDE
Columbia, S. C.

MARY ELIZABETH LEAVITT
Atlanta, Ga.

MARTHA LEIPOLD
Jacksonville, Fla.

EDNA MOORE LEWIS
Atlanta, Ga.

JANE LUTHY
Americus, Ga.

SARA LEE
Live Oak, Fla.

ELOISE LENNARD
Alexander City, Ala.

SARA ELEANOR LEWIS
Orange, Fla.

VERA MARSH
Jacksonville, Fla.

MARY A. MATTHEWS
Smyrna, Ga.

SARA McCAIN
Sanatorium, N. C.

ELEANOR McCANTS
Winnsboro, S. C.

REBECCA McREE
Trenton, Tenn.

SARA BOND MATTHEWS
Lithonia, Ga.

ELOISE McCALL
Marion, S. C.

MARY VIRGINIA McPHAU
Doerun, Ga.

VIRGINIA MILNER
Atlanta, Ga.

THE SI

FRESHMEN



EMMA JEAN MITCHELL
Tullahoma, Tenn.

MARTHA MOFFETT
Kiangyin, China

LUTIE MOORE
Barnesville, Ga.

FRANCES MORGAN
Gadsden, Ala.

MARY MOCQUOT
Paducah, Ky.

SOPHIE MONTGOMERY
Hawaian, China

MARY FRANCES MOORE
Monroe, La.

JULIA MOSELEY
Limona, Fla.

JANE MOSES
Chattanooga, Tenn.

BARBARA LEE MURLIN
Atlanta, Ga.

KATHERINE PATTON
Abingdon, Va.

EVA ANN PIRKLE
Atlanta, Ga.

NELL MOSS
Decatur, Ga.

CHARLOTTE NEWMAN
Spartanburg, S. C.

NELL PINNER
Suffolk, Va.

MARY CLAY PRICE
Decatur, Ala.

MARY REINS
College Park, Ga.

JANE SALTERS
Florence, S. C.

RUTH SLACK
Decatur, Ga.

HAZEL SOLOMON
Macon, Ga.

ISABELLA ROBERTSON
Concord, N. C.

LUCILLE SCOTT
Dallas, Tex.

MARTHA STRATTON SLOAN
Columbia, Tenn.

SHIRLEY WARDLAW STEELE
Ripley, Tenn.

QUETTE

FRESHMEN



LAURA WINSTON STEELE
Ripley, Tenn.

CELESTE STOCKDALE
Decatur, Ga.

ELLEN VEREEN STUART
St. Petersburg, Fla.

MARY NELL TAYLOR
Atlanta, Ga.

HARRIET STIMSON
Chattanooga, Tenn.

EDITH STOVER
Atlanta, Ga.

LOUISE SULLIVAN
Decatur, Ga.

MARY Mc. TEMPLETON
Moorcsville, N. C.

JULIA THIEMONGE
Birmingham, Ala.

EMILY NANCY UNDERWOOD
Decatur, Ga.

MARY ELLEN WARE
Greenville, S. C.

VIOLET JANE WATKINS
Nashville, Tenn.

HENRIETTA THOMPSON
Atlanta, Ga.

GRACE WARD
Selma, Ala.

ELIZABETH WARREN
Monroe, N. C.

EVELYN WEINKLE
Atlanta, Ga.

ANNETTE WILLIAMS
Lawrenceville, Ga.

JEAN WILLIAMS
Hickory, N. C.

JANE WITMAN
Asheville, N. C.

MARJORIE ANNE YOUNG
Haines City, Fla.

EUGENIA WILLIAMS
Washington, Ga.

WILLOMETTE WILLIAMSON
Miami, Fla.

FLORENCE WYNN
Live Oak, Fla.

MARTHA MARIE ZELLNER
Jacksonville, Fla.

THE S I

IRREGULARS



Audrain

Bannister
Rogers

Baum
Sexton

Haggart
Siler

Okamura

FIRST YEAR IRREGULARS

- MARY JANE BANNISTER Charleston, W. Va.
 MARGUERITE BAUM Atlanta, Ga.
 ELEANOR MCBRIDE ROGERS Fort Smith, Ark.
 LOIS SEXTON Bessemer City, N. C.

UNCLASSIFIED

- SUSIE GEANNE AUDRAIN Paris, France
 TAMIKO OKAMURA Tokyo, Japan

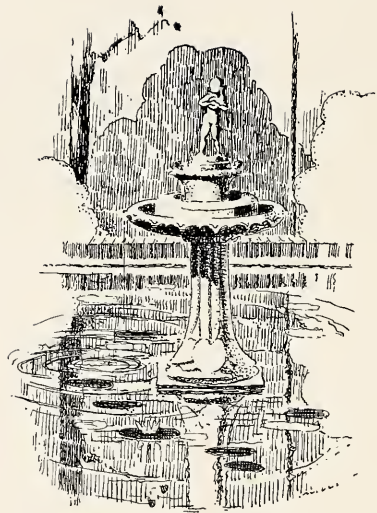
SECOND YEAR IRREGULARS

- DOROTHY SILER Decatur, Ga.

SPECIALS

- ADELE HAGGART Atlanta, Ga.

QUETTE



BOOK THREE

Organizations . . .

Cotton

Georgia is one of the pioneers in the production of cotton, and today it ranks second among the states. A field of white, dotted here and there with a spot of darkness and a dash of red indicating the negro with his red bandana—this against a background of blue has been a typical scene in the state since the colonial days.









Publications

Alexander

Wells

Fleece

M. Watson

King

V. Watson



Smith

West

Little

Hamilton

Johnson

Shortley



EDITORIAL STAFF

SILH

BARTON JACKSON Editor-in-Chief
 ELOISA ALEXANDER Feature Editor
 ZOE WELLS Art Editor
 CHARLINE FLEECE Photographic Editor
 MARGARET WATSON Faculty Editor
 ELIZA KING Organization Editor
 VIRGINIA WATSON Club Editor
 MARY SMITH Athletic Editor
 ELISE WEST Kodak Editor
 ELLEN LITTLE Assistant Kodak Editor
 JANE MOORE HAMILTON Class Editor
 ANN WORTHY JOHNSON Assistant Feature Editor
 AILEEN SHORTLEY Assistant Feature Editor

The aim of the SILHOUETTE is to give an informal picture of all sides of a girl's life at Agnes Scott. Everyone, including the faculty, has given splendid cooperation to the staff in carrying out our policy.

The National Scholastic Press Association convention, which some of the staff were fortunate enough to attend, offered many new and interesting ideas, some of which have been used in this annual. We hope they meet with the school's approval.



JACKSON





Roper
Bryan
Brown
Cairns
Merrill

Hansell
Scott
Turck
Watkins
Hammond

BUSINESS STAFF

MARY GILLESPIE	Business Manager
SUSAN BRYAN	Assistant Business Manager
JOYCE ROPER	Assistant Business Manager
MARTHA PEEK BROWN	Business Assistant
MARGARET HANSELL	Business Assistant
PENN HAMMOND	Business Assistant
BEE MERRILL	Business Assistant
MARJORIE SCOTT	Business Assistant
EMMY LOU TURCK	Business Assistant
ANN WATKINS	Business Assistant
LUCILE CAIRNS	Secretary

ETTE

The dedication of the annual this year was voted on by the entire senior class, as we believed it was fairer to the school and a greater honor to the individual.

The success of the SILHOUETTE is due to the full cooperation and interest of the staff. Each editor was responsible for her section of the book and deserves due credit. The staff as a whole acknowledges the service and help of Mr. Thornton Deas of the Journal Engravers, Mr. Charlie Young of Foote and Davies, and Mr. Elliott of Elliott's Studio.



GILLESPIE

T C O L L E G E

Matthews
Allison
Hale



Sewell
Lyle

EDITORIAL STAFF

- ELIZABETH ESPY Editor-in-Chief
 NELL ALLISON Assistant Editor
 JUNE MATTHEWS Assistant Editor
 CAROL HALE Assistant Editor
 DOUGLAS LYLE Exchange Editor
 JULIA SEWELL Book Editor

THE A

THE AURORA gives the whole student body a chance to enjoy and appreciate the work of its talented members. It is the only purely literary student publication and as such, has a very definite place on the campus. Our flowering dramatists, short-story writers, essayists, critics, and poets find there a place for their talents and a place where they can get used to seeing their names and thoughts in print.



ESPY

A G N E S S C



Kelly
Carmichael
Wells
Buchholz

Blackmon
Tazewell

O R A

Artists, too, contribute to THE AURORA, through the annual cover contest. This year it was won by Jane Guthrie, whose black and white design of the sun rising over a small village was awarded first place.

"Salmagundi," begun last year as a section for contributions from the freshmen, has been continued, and many a weary hour spent on a "freshman English" theme has been rewarded by having the masterpiece appear in THE AURORA.

This publication, with THE AGONISTIC, returned to the old system of election of editor and business manager on the regular student ballot, this year.

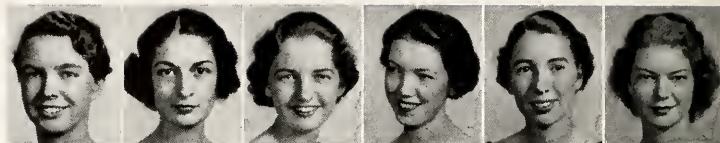
BUSINESS STAFF

- CATHARINE JONES Business Manager
- OLA KELLY Business Assistant
- CAROLINE CARMICHAEL Business Assistant
- GRACE TAZEWELL Business Assistant
- ZOE WELLS Business Assistant
- MARY BUCHHOLZ Circulation Manager
- TOMMY RUTH BLACKMON . Assistant Circulation Manager

JONES



Cary
J. Guthrie
Hudson
Jones
King
Middleton



Gilroy
Davis
Matthews
Hertzka
Wilson
M. F. Guthrie



Chalmers
Christie
Moss
Warden



EDITORIAL STAFF

Laura Steele	Editor-in-Chief
Frances Cary	Associate Editor
Jane Guthrie	Assistant Editor
Mary McCain Hudson	Assistant Editor
Hortense Jones	Assistant Editor
Mary Jane King	Editorial Council
Enid Middleton	Editorial Council
Nellie Margaret Gilroy	Feature Editor
Mildred Davis	Book Editor
June Matthews	Make-up Editor
Ruth Hertzka	Assistant Make-up Editor
Frances Wilson	Current History Editor
Mary Frances Guthrie	Exchange Editor
Jean Chalmers	Sports Editor
Cornelia Christie	Club Editor
Pauline Moss	Society Editor
Elizabeth Warden	Alumnae Editor

THE AGG

The "Aggie" is a real part of Agnes Scott life—on those occasional Wednesdays during exams when the paper doesn't come out, the week doesn't seem quite right.

"Look in the Aggie" for news about any campus activity—elections, lectures, club meetings and all other activities. Students can express their ideas about campus problems frankly and freely in the "We Think" column. Features keep us up on all the classroom witticisms, and if the library paper is too popular for everybody to get to, the current history column solves the problem.



STEELE

A G N E S S C



Blackshear

Belford

Hemphill

Morrow

BUSINESS STAFF

KATHRYN B. WALL Business Manager

ELIZABETH BLACKSHEAR Advertising Manager

FRANCES BELFORD Circulation Manager

NELL HEMPHILL Circulation Manager

MARY LIB MORROW Circulation Manager

I S T I C

The editors this year decided that the policy of the paper was too great a responsibility for one or two people and so they appointed an editorial council, to formulate opinion about campus activities.

At the suggestion of the editor, students voted to go back to the popular election of editor and business manager, on the regular student ballot, instead of by an editorial board.

WALL



T C O L L E G E



Junior Edition

Agonistic

Don't Be Black-Listed

DECATUR, GA., WEDNESDAY, FEBRUARY 10, 1937 NO. 13

Queen of May Day Juniors Issue Invitations For Class Banquet Feb. 13

Announce Names of Escorts, Board Plans

Senior Edition

Agonistic

May Day Queen

DECATUR, GA., WEDNESDAY, FEBRUARY 3, 1937

to Kappa Sester

Sophomore Edition

The Agonistic

Sign Up For May Day

Do Your Own "Spring Dance"

AGNES SCOTT COLLEGE, DECATUR, GA., WEDNESDAY, FEBRUARY 17, 1937 NO. 14

Form Week MAID-OF-HONOR Wilson Wins Second Place

Freshman Edition

The Agonistic

Exam-Cram Holiday-Hooray

VDL XXII AGNES SCOTT COLLEGE, DECATUR, GA., WEDNESDAY, FEBRUARY 24, 1937 NO. 15

Eight Players Make Varsity In Basketball

Four Sophomores Make Team: Two Freshmen, One Junior, Senior

To Meet Sub-Varsity Mar. 2

Receiving recognition for outstanding



Glee Club Will Give Operetta On March 26

Nickels, Lusterers Take Leads in Lively Vaudeville Drama On March 4-6

Atlanta Soloists Have Roles

A duke and a duchess, two romantic Vaudeville favorites, and a new

AGONISTIC CONTEST

This year the annual AGONISTIC contest was won by the Junior class. Carol Hale was the class editor, and Joyce Roper was the business manager. Last year also this class as Sophomores won the loving cup for the best paper. The Senior paper was rewarded second place and the Sophomore edition third place.

The judges were: W. T. Wynn, English professor at G. S. C. W., Professor J. E. Drewry, head of the University of Georgia Journalism School, Professor Raymond Nixon of the Emory University Journalism School, Professor J. D. Allen of the English department of Mercer, and Miss Annie May Christie of the English department of Agnes Scott. They selected the winners on the basis of such points as: editorials, features, news stories, make-up, and originality.



Associations

L. Coit
 Johnson
 Willis
 Harris



Newton
 Lasseter



EXECUTIVE COMMITTEE

- ALICE HANNAH President
 MARY JANE TIGERT Vice-President
 LAURA COIT Secretary
 ANN WORTHY JOHNSON Treasurer
 BETTY WILLIS House President of Rebekeh
 FANNIE B. HARRIS House President of Main
 MARY ALICE NEWTON House President of Inman

STUDENT ASSO

The officers of Student Government this year have emphasized the fact that the Association is composed of the entire student body and that "Exec" is just the Executive Committee, a small group to carry out the wishes of the student body. Such a policy has met with the co-operation of all the students.

Two main projects for this year were a handbook editor and a cut system, and we got both. The handbook editor was put on the regular student ballot, and after all these years, we succeeded in convincing the faculty of the desirability of cuts.



HANNAH

A G N E S S C



Fairly
Kernan
Bailey
McMullen

Dennison
McCain

GOVERNMENT TION

The quarter system mixed up the time of elections, and this and other changes were taken up in Open Forum, efficiently presided over by the vice-president. Her policy of preparedness—of being warned about matters to be brought up, so she could answer the questions or have someone there who could—made these meetings really worthwhile.

The N. S. F. A. Discussion Group, led by Fannie B. Harris this year, offered another opportunity for student discussions. The Agnes Scott delegates to the National Congress of the Federation, held this year in New York, were Alice Hannah and Ann Worthy Johnson. They both came back full of enthusiastic ideas about how to rouse Agnes Scott out of itself and make it a place more wonderful than ever before.

EXECUTIVE COMMITTEE

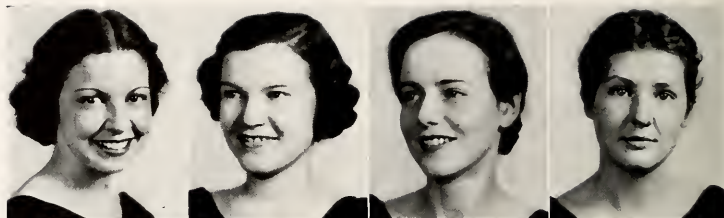
- FLORENCE LASSETER Student Recorder
- MARY LILLIAN FAIRLY Junior Representative
- MARY ANNE KERNAN Junior Representative
- JEAN BAILEY Sophomore Representative
- EMMA McMULLEN Sophomore Representative
- LUCILE DENNISON Day Student Representative
- ISABEL McCAIN Ex-Officio

TIGERT

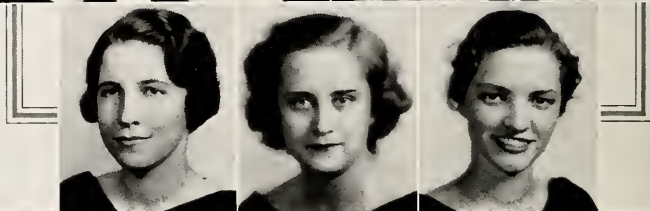


T C O L L E G E

Adams
Young
Wilson
Long



Gilroy
M. Coit
Kellersberger



CABINET

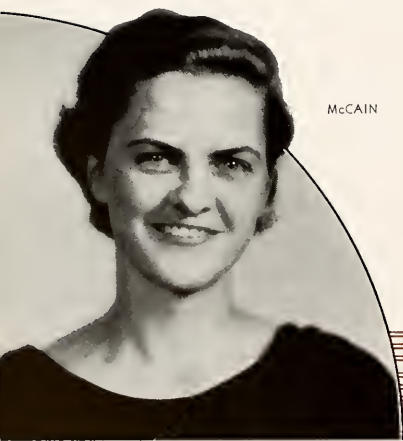
- ISABEL McCAIN President
 BETTY HOLLIS Vice-President
 LOUISE YOUNG Secretary
 JEAN BARRY ADAMS Treasurer
 FRANCES WILSON Program Chairman
 NELLIE MARGARET GILROY Social Service Chairman
 MARTHA LONG Industrial Chairman
 MILDRED COIT World Fellowship Chairman

Y. W.

The Y. W. C. A. sponsors varied activities on the campus, such as vespers during the week and on Sunday nights, chapel programs, and Open House in the Murphey Candler Building every Sunday afternoon.

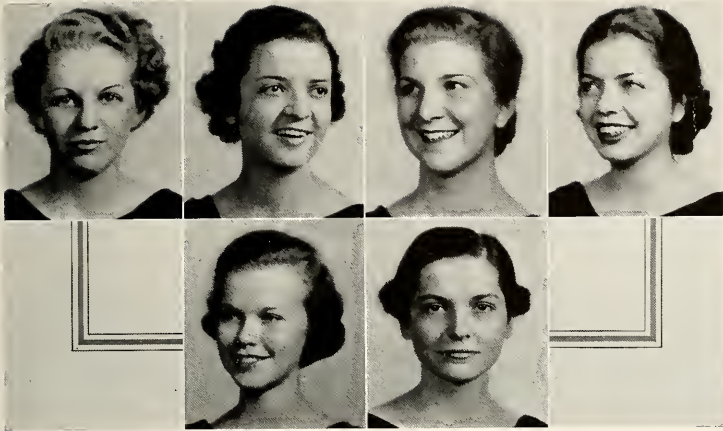
This year Y. W. adopted the policy of having more student speakers, as well as interesting outside speakers. A Y. W. Open Forum gave the entire student body an opportunity to make suggestions about the various groups in the organization. The Sophomore Council, with members elected by that class, was organized to give those girls an opportunity to take a more active part in Y. W.

One of the major projects of Y. W. this year was to bring to the campus for a week of conferences and lectures Miss Elizabeth Osborne, of New York, Consultant on Appearance.



McCain

A G N E S S C



Hassell
Wheeler
Noble
Lyle

Abbott
Hannah

CABINET

A.

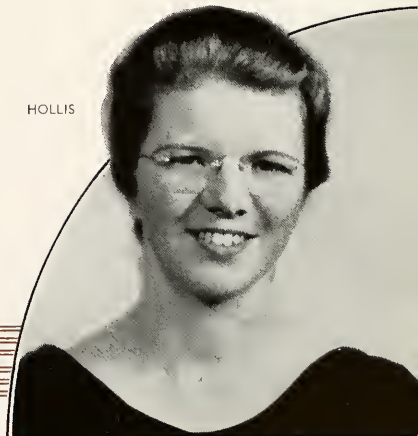
The individual groups have been very active too. The Social Service group, in addition to giving the Christmas party for the underprivileged children of the county, made Red Cross flags to send to the flood areas, and the Industrial group visited the girls at the Atlanta Y. W. C. A. and took trips through the Uneeda Biscuit Co. plant and other such places. Other groups, too, had special projects, in addition to their regular programs.

"Christ—A Challenge" has been the topic of an interesting series presented by the Program Committee. Dr. Ben Lacy, president of the Union Theological Seminary, conducted the week of religious services.

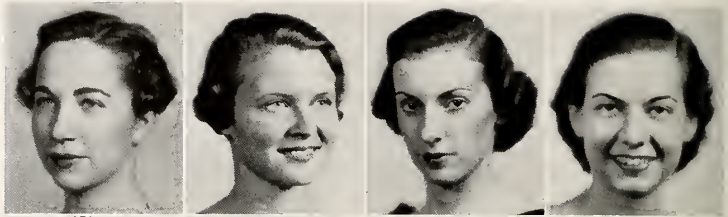
Agnes Scott had several representatives at the spring meeting of the state Y. W. and Y. M. C. A.'s, of which Isabel McCain was president.

- WINIFRED KELLERSBERGER Spiritual Life Chairman
- HIBERNIA HASSELL Mission Interest Chairman
- CARY WHEELER Social Chairman
- PRIMROSE NOBLE Music Chairman
- DOUGLAS LYLE Publicity Chairman
- FRANCES ABBOTT Freshman Representative
- ALICE HANNAH Ex-Officio

HOLLIS



Robinson
Thompson
Kneale
Chalmers



Turck
Carmichael



BOARD MEMBERS

- JULIA THING President
 MARIE STALKER Vice-President
 FRANCES ROBINSON Secretary
 ANNE THOMPSON Treasurer
 MARY KNEALE Social Chairman
 JEAN CHALMERS Publicity Chairman
 EMMY LOU TURCK Publicity Chairman

ATHLETIC

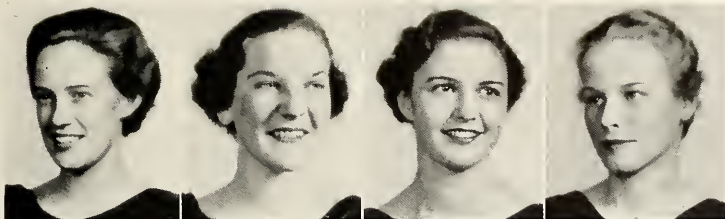
Athletic Association has been very successful this year in carrying out its theme of Recreation, in addition to the regular programs of seasonal sports.

The ping-pong tournament in the fall was most exciting, and a volleyball tournament helped chase away cares and worries during exam week. There have been long and short hikes, and the breakfast hike into Atlanta, by the Hiking Squad; and besides these, the Outing Club sponsored a supper hike for anybody who wanted to go. Of course it rained, but eating hot dogs in the Athletic Board room and toasting marshmallows over a fire behind the gym was just as much fun as going to the woods.



THING

A G N E S S C



Merrill
Little
Cuddy
Taylor



Dryfoos
V. Watson

SOCIATION

Another part of the Recreation program was A. A. Open House and candy pulls in the Murphey Candler Building. Apples, peanuts, popcorn, and taffy was the general menu for these entertainments, and everybody has enjoyed the radio and new victrola records A. A. gave to the building.

A Japanese wedding celebration was the theme of the unusually colorful water pageant, "A Feast of Lanterns."

Anne Thompson and Jane Dryfoos represented Agnes Scott at the annual meeting of the Georgia Athletic Federation of College Women, of which Mary Kneale was president. Anne was elected secretary-treasurer for next year.

BOARD MEMBERS

- CAROLINE CARMICHAEL Song Leader
- BEE MERRILL Swimming Manager
- ELLEN LITTLE Tennis Manager
- ESTELLE CUDDY Archery Manager
- ALICE TAYLOR Hockey Manager
- JANE DRYFOOS Hiking Manager
- VIRGINIA WATSON Camp Manager



STALKER

T C O L L E G E

Stalker
Cary
Alexander



OFFICERS

- FANNIE B. HARRIS President
- MARY JANE TIGERT Vice-President
- MARIE STALKER Secretary
- FRANCES CARY Treasurer
- ELOISA ALEXANDER Quarterly Editor

MORTAR BOARD

Members of Mortar Board, the national senior honorary society of campus leaders, are elected on the basis of service, leadership, and scholarship.

Most of the activities of the organization have, until this year, been secret, but the present chapter decided to announce to the entire student body the major parts of its program in order to secure the greatest cooperation from the whole group.

The major activity of Mortar Board this year was to take charge of the Murphy Candler Building. It has supervised the furnishings and decorations of the lobby, and it assigned the rooms to the various organizations and clubs and arranged the schedule of activities in the building.



HARRIS

A G N E S S C



Hannah
McCain
Steele
Thing

BOARD

This organization is responsible for many of the social activities on the campus. Parties for the freshmen and sophomores, to which men are invited, were given this year in the Murphey Candler Building. As usual, Mortar Board entertained the juniors and their dates at the Junior Banquet, where there were flowers and music and new dresses. Besides giving these annual events, the chapter this year entertained the college community and all the guests at a tea after the dedication of the new library.

They also invited the juniors to a tea to meet one of their national officers who visited Agnes Scott this fall.

MEMBERS

ALICE HANNAH

ISABEL McCAIN

LAURA STEELE

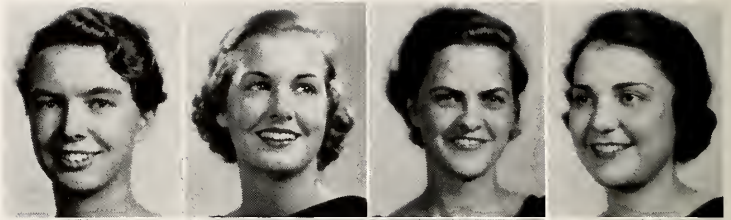
JULIA THING

TIGERT

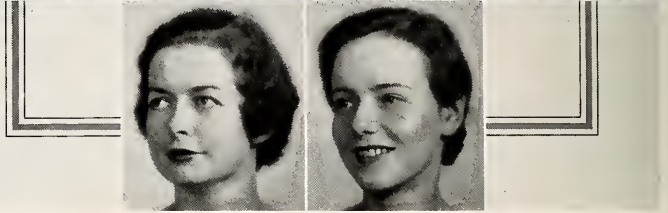


T C O L L E G E

Cary
Dennison
McCain
Shamos



Tilly
Wilson



CLASS OF 1937

- | | |
|-----------------|----------------|
| FRANCES CARY | RACHEL SHAMOS |
| LUCILE DENNISON | MILDRED TILLY |
| ISABEL McCAIN | FRANCES WILSON |

CLASS OF 1936

- | | |
|-------------------|----------------|
| LENA ARMSTRONG | AUGUSTA KING |
| SHIRLEY CHRISTIAN | AGNES J. McKOY |
| ELIZABETH FORMAN | EDITH MERLIN |
| LITA GOSS | SARAH NICHOLS |
| JANET GRAY | MARY SNOW |
| ETHELYN JOHNSON | MARIE TOWNSEND |

PHI BETA KAPPA

Phi Beta Kappa announcements are among THE events of the year, and the academic procession of the local chapter, to the tune of "Ancient of Days," with brilliantly colored hoods and robes, adds to the dignity and excitement of the program. The speaker for the program this year was Mr. Jackson Davis, president of the Phi Beta Kappa chapter of William and Mary University, which is the original chapter of the organization.

An unusually large percentage of the senior class was elected this year, into the Agnes Scott chapter, which is the Beta of Georgia chapter, installed ten years ago. Elections are made on the basis of scholarship, combined with campus activities.

A G N E S S C



Cary
Dennison
Espy
Gilroy
Matthews
McCain
Middleton
Moss
Printup
Stevens
Wall
Tilly
Wilson
Blackshear
Blackstone
Coit
Davis
Hertzka
Kernan
King
Seay
Thompson
Turner
Wells
Young
M. F. Guthrie
Hutchins
Kenny
Lyle
Merritt
Murphey
Ratliff
Shortley
Whetsell

HONOR ROLL

Announcement of the Honor Roll is the occasion of the first academic procession of the year, a sight which thrills old girls as well as freshmen, and there is a tense silence while Dr. McCain reads the names of those who made the highest scholastic averages for the past year. A "B" average is the minimum requirement.

The list this year, for 1935-36, was unusually long—a fact which Dr. McCain said he didn't know whether to attribute to the faculty's leniency or the increasing "brilliance" of the students. Well, we know!

CLASS OF 1937

FRANCES CARY	ENID MIDDLETON
LUCILE DENNISON	PAULINE MOSS
ELIZABETH ESPY	KATHRYN PRINTUP
NELLIE MARGARET GILROY	FAXIE STEVENS
JUNE MATTHEWS	MILDRED TILLY
ISABEL McCAIN	KATHRYN B. WALL
FRANCES WILSON	

CLASS OF 1938

ELIZABETH BLACKSHEAR	ELIZA KING
ELSIE BLACKSTONE	ELISE SEAY
LAURA COIT	ANNE THOMPSON
MILDRED DAVIS	JANE TURNER
RUTH HERTZKA	ZOE WELLS
MARY ANNE KERNAN	LOUISE YOUNG

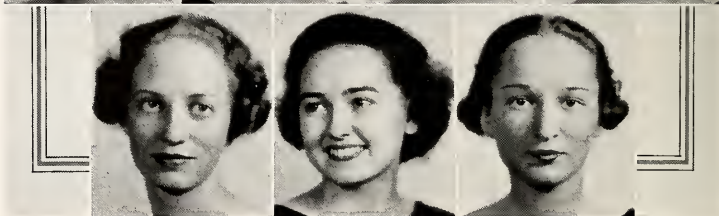
CLASS OF 1939

MARY FRANCES GUTHRIE	MARIE MERRITT
CORA KAY HUTCHINS	MARY RUTH MURPHEY
ELIZABETH JOAN KENNY	MAMIE LEE RATLIFF
DOUGLAS LYLE	AILEEN SHORTLEY
MARY ELLEN WHETSELL	

Wilson
Tigert
M. Watson
Malone



Hemphill
Purnell
Turner



MEMBERS

- CHARLINE FLEECE President
FRANCES WILSON Treasurer
MARY JANE TIGERT Social Chairman
MARGARET WATSON Publicity Chairman
MARY MALONE Senior Representative
NELL HEMPHILL Junior Representative
ANNE PURNELL Sophomore Representative
JANE TURNER Day Student Representative

LECTURE ASSOCIATION

Lecture Association is one of those things that make Agnes Scott what it is and puts it above most other colleges.

This organization gives the college community and visitors the opportunity of hearing the most outstanding figures in the fields of literature, history, science, and world affairs, and also the privilege of meeting the famous visitors personally at informal receptions. Louis Untermeyer, Arthur Compton, Robert Frost, Thornton Wilder, and Edna St. Vincent Millay are some of the recent lecturers.

This fall Stuart Chase, the noted economist, writer, and lecturer, spoke on "The End of an Epoch." Carl Sandburg, famous poet, was another of the speakers presented on the series this year.



FLEECE

A G N E S S C O T T



Thompson
Sewell
Daniel
Hassell
Rainey
Steele
Turner

Baird
Earthman
MacGuire
Matthews
Moses
Tate
Blackmon

Kirkpatrick
Sanford
Fleece
Marsh
Wyatt

MAY DAY COMMITTEE

May Day is one of the most beautiful and most popular traditions of Agnes Scott, and the May Day Committee is the group that works all year to present a colorful celebration the first part of May. The scenario contest is held early in the fall, and from then until May, the committee is hard at work perfecting the scenario, designing costumes, working out dances and music, making properties—which include everything from a silver cobweb to a brick bungalow, putting up posters, and—selecting a May Queen and a May Court.

The scenario chosen for this year's pageant was an adaptation of Milton's famous masque, "Comus."

MEMBERS

ELOISA ALEXANDER	Chairman
ANNE THOMPSON	Business Manager
JULIA SEWELL	Scenario
KATHLEEN DANIEL	Costumes
HIBERNIA HASSELL	Costumes
MARJORIE RAINEY	Costumes
FRANCES STEELE	Costumes
JANE TURNER	Costumes
CECILIA BAIRD	Properties
NELLE SCOTT EARTHMAN	Properties
FLORA MacGUIRE	Properties
JUNE MATTHEWS	Dances
HELEN MOSES	Dances
RUTH TATE	Dances
TOMMY RUTH BLACKMON	Music
JEAN KIRKPATRICK	Music
HADYN SANFORD	Music
CHARLINE FLEECE	Publicity
VERA IRBY MARSH	Publicity
JANE WYATT	Posters

ALEXANDER





SPONSORS

Sponsors are chosen from the Junior and Senior classes, for orientation of the new students and to act as their advisors throughout the year. The work of this group is under the supervision of the vice-president of Student Government.

EDITH BELSER
 ELIZABETH BLACKSHEAR
 KATHERINE BRITTINGHAM
 MARTHA PEEK BROWN
 LUCILLE CAIRNS
 FRANCES CASTLEBERRY
 JEAN CHALMERS
 CORNELIA CHRISTIE
 ELIZABETH COUSINS
 MILDRED DAVIS
 GOUDYLOCH ERWIN
 JANE ESTES
 MARY LILLIAN FAIRLY
 ANNA KATHERINE FULTON
 MICHELLE FURLOW
 JUDITH GRACEY
 MARTHA ALICE GREEN
 MARGARET HANSELL
 HIBERNIA HASSELL
 NELL HEMPHILL
 RUTH HERTZKA
 DOROTHY JESTER
 MARY JOHNSON
 MARTHA JOHNSON
 SARAH JOHNSON
 MOLLY JONES
 WINIFRED KELLERSBERGER
 OLA KELLY
 RACHEL KENNEDY
 MARY ANNE KERNAN

ELLEN LITTLE
 FLORENCE LITTLE
 MARTHA LONG
 JEANNE MATTHEWS
 FRANCES McDONALD
 LETTIE MCKAY
 BERTHA MERRILL
 ENID MIDDLETON
 MARGARET MORRISON
 MARY LIB MORROW
 FRIMROSE NOBLE
 ROSE NORTHCROSS
 VIRGINIA POPLIN
 ALICE REINS
 ELISE SEAY
 SARA BEATY SLOAN
 MARY SMITH
 FRANCES STEELE
 VIRGINIA SUTTENFIELD
 RUTH TATE
 JULIA TELFORD
 MILDRED TILLY
 MARY NELL TRIBBLE
 JANE TURNER
 ELIZABETH WARDEN
 VIRGINIA WATSON
 ELISE WEST
 MARY WILLIS
 FRANCES WILSON
 DIXIE WOODFORD

JANE WYATT



TIGERT

A G N E S S C



S. Johnson
Chalmers
Gracey
Dennison

Wells
M. Johnson

STUDENT OFFICIALS

The Senior Student Treasurer and her Junior Assistant have a real job, and an important one, for without their ceaseless efforts to collect the student budget, probably half the students would forget about it and get on the Black List, which means exclusion from those student activities which receive money from the budget. They also apportion the money to the campus organizations according to the student budget, which was revised this year.

Fire drills and flashlights for her dormitory lieutenants are the chief worries of the Fire Chief, who can make or break friendships by the time of night she chooses for a fire drill.

This year the office of President of Day Students was put on the regular election ballot, and the girl was elected by the entire student body, instead of just by day students. Since she is automatically a member of Exec, it was felt that the office concerned boarding as well as day students. The other day student officials are elected by that group.

SARAH JOHNSON Student Treasurer

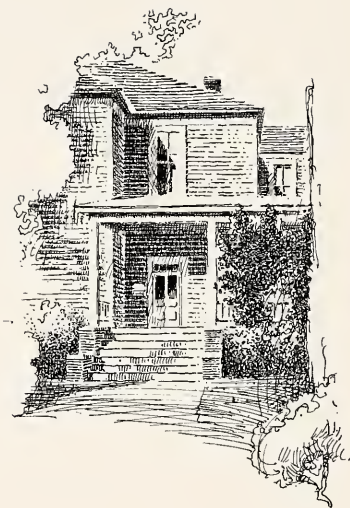
JEAN CHALMERS . . . Assistant Student Treasurer

JUDITH GRACEY Fire Chief

LUCILE DENNISON . . . President of Day Students

ZOE WELLS . . . Vice-President of Day Students

MARY JOHNSON
Secretary-Treasurer of Day Students





Clubs

CHI BETA PHI SIGMA

OFFICERS

MARTHA SUMMERS President
 PAULINE MOSS Vice-President
 MILDRED TILLY Corresponding Secretary
 FRANCES McDONALD Recording Secretary
 NELL SCOTT Treasurer



Summers
Tilly
McDonald
Moss
Scott

MEMBERS

JEAN AUSTIN	KATHERINE MAXWELL
ANN COX	FRANCES NORMAN
JANE ESTES	MARJORIE SCOTT
PHILIPPA GILCHRIST	RACHEL SHAMOS
REGINA HERWITZ	AILEEN SHORTLEY
MRS. HENRY HERBERT	ELIZABETH SKINNER
ANN WORTHY JOHNSON	VIRGINIA STEPHENS
OLA KELLY	VIRGINIA SUTTENFIELD
ELIZABETH KENNY	LENA SWEET
WAYVE LEWIS	MARGARET WATSON
JEANNE MATTHEWS	BETTY WILLIS

JESSIE WILLIAMS

Chi Beta Phi Sigma is the Alpha chapter of the woman's branch of this national honorary society, whose members are elected on a basis of high scholarship. Meetings with noted speakers are open to the college community so that we all may tap the wires broadcasting the latest findings in the scientific world.



ETA SIGMA PHI

OFFICERS

- FRANCES CARY President
 MILDRED DAVIS Vice-President
 NELL ALLISON Corresponding Secretary
 MARY JANE KING Recording Secretary
 MOLLY JONES Treasurer
 GWENDOLYN McKEE Pyloras



Cary
King Allison Davis
Jones

MEMBERS

- | | |
|----------------------|----------------------|
| ELSIE BLACKSTONE | MARIE MERRITT |
| MARY VIRGINIA FARRAR | ISABEL McCAIN |
| ALICE HANNAH | ENID MIDDLETON |
| SARAH JOHNSON | LAURA STEELE |
| RACHEL KENNEDY | MARY JANE TIGERT |
| FRANCES LEE | KATHERINE BOWEN WALL |
| REBECCA LOVE | ZOE WELLS |

Interest in the classics is furthered through the efforts of Eta Sigma Phi which is a national honorary society for undergraduate students of Latin and Greek with high averages. The members increase their knowledge of the languages in their regular meetings and have an annual banquet.





Watson
Hertzka

Cairns

Roper
Middleton

K . U . B .

OFFICERS

- MARGARET WATSON President
 JOYCE ROPER First Vice-President
 LUCILLE CAIRNS Second Vice-President
 RUTH HERTZKA Secretary
 ENID MIDDLETON Treasurer

MEMBERS

- | | |
|----------------------|------------------|
| JEAN BARRY ADAMS | BARTON JACKSON |
| EVELYN BATY | CATHARINE JONES |
| ELIZABETH BLACKSHEAR | ELIZA KING |
| MARY BUCHHOLZ | ELLEN LITTLE |
| CATHERINE CALDWELL | MARIE MERRITT |
| FRANCES CARY | ORA MUSE |
| CORNELIA COOK | ANNE PURNELL |
| KATHLEEN DANIEL | HAYDEN SANFORD |
| MILDRED DAVIS | SARA BEATY SLOAN |
| MARY DIXON | ANN WATKINS |
| GOUDYLOCH ERWIN | ELSIE WEST |
| MARY LILLIAN FAIRLY | MARY WILLIS |

Seeing your friends' names and your own in print is more of a thrill when you've helped in the news writing! K. U. B. members keep the girls' home town papers informed as to their activities, and handle the college publicity for The Atlanta Journal and The DeKalb New Era. The monthly meetings feature speakers who are in the know about the newspaper world.



BLACKFRIARS

OFFICERS

- KATHRYN PRINTUP President
 MYRL CHAFIN Vice-President
 LUCILLE CAIRNS Secretary
 JOYCE ROPER Treasurer



Printup

Chafin

Cairns

Roper

MEMBERS

- | | |
|-----------------------|-----------------------|
| JEAN BAILEY | DOROTHY LEE |
| FRANCES BELFORD | LETTIE MCKAY |
| CAROLINE CARMICHAEL | BERTHA MERRILL |
| JEAN CHALMERS | HELEN MOSES |
| CORNELIA CHRISTIE | PRIMROSE NOBLE |
| ESTELLE CUDDY | MARY PAST |
| ELIZABETH COUSINS | ANNE PURNELL |
| LUCILE DENNISON | JEANNE REDWINE |
| JEANNE FLYNT | MARY PENNELL SIMONTON |
| ANNA KATHERINE FULTON | BERYL SPOONER |
| MARY GILLESPIE | MARIE STALKER |
| SUSAN GOODWYN | FRANCES STEELE |
| MARTHA HEAD | KATHRYN TOOLE |
| OLA KELLY | JANE TURNER |
| KATHLEEN KENNEDY | KATHERINE BOWEN WALL |
| MARY ANNE KERNAN | DIXIE WOODFORD |

Backstage drama is carried on by the Blackfriars as well as the presentation of several big plays behind the footlights during the year. The girls learn the essentials of make up, stage management, lighting, the making of scenery, as well as the principles of acting under the guidance of Miss Gooch and Miss Latimer. The members also give one-act plays before the club twice a month.



PI ALPHA PHI

OFFICERS

- NELLIE MARGARET GILROY President
 MARY LILLIAN FAIRLY Vice-President
 BROOKS SPIVEY Secretary
 LUCILE DENNISON Treasurer



Gilroy Fairly
 Spivey Dennison

MEMBERS

- | | |
|----------------------|------------------|
| JEAN BARRY ADAMS | FANNIE B. HARRIS |
| JEAN AUSTIN | NELL HEMPHILL |
| FRANCES BELFORD | DOROTHY LEE |
| ESTHER BYRNES | FRANCES LEE |
| JANE CARITHERS | ELLEN LITTLE |
| LAURA COIT | FLORENCE LITTLE |
| MARGARET DOUGLAS | FLORA MacGUIRE |
| GOUDYLOCH ERWIN | HELEN MOSES |
| MARY FRANCES GUTHRIE | FRANCES NORMAN |
| HIBERNIA HASSELL | SARA BEATY SLOAN |

JANE TURNER

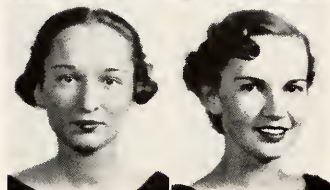
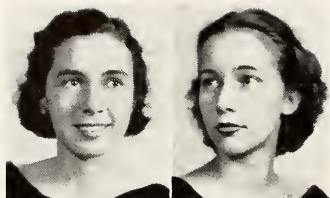
Pi Alpha Phi, the debating club, helps to keep the campus in touch with other campuses by sponsoring intercollegiate debates on current affairs and gives experience in debating and speaking in public. This year the poetic rebuttals of the girls in the traditional debate with the English students, who seemed to be record limerick makers, further proved the versatility of Pi Alpha Phi members.



FRENCH CLUB

OFFICERS

- MARGARET HANSELL President
 ELISE SEAY Vice-President
 JANE TURNER Secretary
 ADELAIDE BENSON Treasurer



Hansell
Turner

Seay
Benson

"Parlez-vous francais, Mademoiselle? Venez au cercle francais" which is the place to perfect your French to impress your friends, besides being in a club with a purpose—which is to give students a knowledge of the history, arts, and literature of the French people, particularly this year, of the provinces. The programs have included provincial songs, dances, and skits in peasant costumes, and a movie of the provincial life in Brittany.

MEMBERS

- | | |
|---------------------|------------------------|
| BETTY ALDERMAN | SARAH JOHNSON |
| NELL ALLISON | HORTENSE JONES |
| SUZANNE AUDRAIN | WINIFRED KELLERSBERGER |
| CECILIA BAIRD | JEAN KIRKPATRICK |
| JOSEPHINE BERTOLLI | MARY ELIZABETH LEAVITT |
| TOMMY RUTH BLACKMON | ELLEN LITTLE |
| HENRIETTA BLACKWELL | JACQUELYN McWHITE |
| MARY KATE BURRUSS | ENID MIDDLETON |
| FRANCES CARY | MARY RUTH MURPHEY |
| CATHERINE CALDWELL | AMELIA NICKELS |
| JEAN CHALMERS | PRIMROSE NOBLE |
| SARA CORBITT | KATHRYN PRINTUP |
| MILDRED DAVIS | NELL SCOTT |
| LUCY HILL DOTY | MARTHA SUMMERS |
| RUTH EYLES | JULIA TELFORD |
| RENÉE GÉRARD | JULIA THING |
| MARTHA ALICE GREEN | FLORENCE WADE |
| MARY McCANN HUDSON | EVELYN WALL |
| REGINA HERWITZ | EVELYN WEINKLE |
| MARY JOHNSON | LOUISE YOUNG |



GERMAN CLUB

OFFICERS

- MARY KNEALE President
 ANNE THOMPSON Vice-President
 JEAN AUSTIN Secretary
 JANE DRYFOOS Treasurer



Kneale Thompson
 Austin Dryfoos

MEMBERS

- | | |
|-----------------------|-------------------|
| ELIZABETH BLACKSHEAR | WAYVE LEWIS |
| FRANCES CASTLEBERRY | MARTHA LONG |
| JEAN CHALMERS | JEANNE MATTHEWS |
| CORNELIA CHRISTIE | JUNE MATTHEWS |
| MILDRED DAVIS | JACQUELYN McWHITE |
| ANNA KATHERINE FULTON | FRANCES NORMAN |
| EMILY HARRIS | EUSE SEAY |
| RUTH HERTZKA | RACHEL SHAMOS |
| ANN WORTHY JOHNSON | JANE TURNER |
- KATHRYN BOWEN WALL

Every four weeks the AGONISTIC club column records the meetings of the German Club in Lupton Cottage, and we know there has been another delightful combination of nice guttural sounds and Miss Harn's hospitality. Besides these pleasant gatherings the club presents a "Weinachtspiel" (Christmas play) annually and sings carols the night before Christmas holidays.



SPANISH CLUB

OFFICERS

LOUISE BROWN President

HIBERNIA HASSELL Vice-President

ELSIE BLACKSTONE Secretary-Treasurer



Brown Blackstone Hassell

MEMBERS

- | | |
|--------------------|-----------------|
| SUZANNE AUDRAIN | MARTHA HEAD |
| LOUISE BAILEY | MARY JOHNSON |
| JOSEPHINE BERTOLLI | DOROTHY LEE |
| MARTHA PEEK BROWN | VERA IRBY MARSH |
| CORNELIA CHRISTIE | EMILY McMORLAND |
| MARTHA ALICE GREEN | MARGARET OLSEN |
| MARGARET HANSELL | ELLEN O'DONNELL |

VIRGINIA TUMLIN

Spanish Club members have endeavored this year to further interest in Spanish culture, chiefly music and literature. This year they gave a Spanish tea for Professor Seris, the Spanish lecturer, and presented a Christmas play, "Tocino del Cielo," with the Emory Spanish Club. The carol singers were lighted on their way around the campus the night before Christmas holidays with lanterns Miss Cilley brought back from Spain last summer.



GRANDDAUGHTERS' CLUB

OFFICERS

- KATHLEEN DANIEL President
 BARTON JACKSON Vice-President
 CAROLINE ARMISTEAD Secretary-Treasurer



Daniel Armistead Jackson

MEMBERS

- | | |
|------------------------|-------------------|
| LUCILLE CAIRNS | DOROTHY LEE |
| CORNELIA COLEMAN | MARTHA MARSHALL |
| ELIZABETH COUSINS | SARAH B. MATTHEWS |
| MARGARET DOUGLAS | MARY McPAUL |
| NELLE SCOTT EARTHMAN | JANE MOSES |
| CAROLYN FORMAN | ORA MUSE |
| SUSAN GOODWYN | ELLEN O'DONNELL |
| PENN HAMMOND | BETTY SAMS |
| FANNIE B. HARRIS | JULIA SEWELL |
| BETTY HOLLIS | RUTH SLACK |
| KATHLEEN JONES | VIRGINIA STEPHENS |
| LENORA JONES | ELLEN STUART |
| WINIFRED KELLERSBERGER | MARY NELL TRIBBLE |

Granddaughters' Club is for those girls who have had Agnes Scott in their families for years—since mother was a girl. The activities are social, and conclude with a banquet in the spring for members and their dates.



CITIZENSHIP CLUB

OFFICERS

FRANCES BELFORD President

LUCILLE CAIRNS Vice-President

FLORENCE LITTLE Secretary-Treasurer



Belford Little Cairns

Not every college campus can boast of having three national political party conventions the same year, the same day, in the same auditorium, but this do women revolutionize politics! The results of the model election sponsored by the Citizenship Club were the same as those in the national election, which proves something—perhaps that we all learned how to vote in the most citizen like manner.

MEMBERS

- | | |
|----------------------|----------------------|
| VIRGINIA CALDWELL | KATHERINE MAXWELL |
| FRANCES CASTLEBERRY | MARJORIE RAINEY |
| JEAN CHALMERS | NELL SCOTT |
| LUCILE DENNISON | MARY FAIRFAX STEVENS |
| NELLE SCOTT EARTHMAN | ALICE TAYLOR |
| MICHELLE FURLOW | MARY JANE TIGERT |
| MARTHA JOHNSON | EULA TURNER |
| CATHARINE JONES | JESSIE WILLIAMS |
| DOROTHY LEE | PEGGY WILLIS |
| ORA MUSE | MARGARET WATSON |



INTERNATIONAL RELATIONS CLUB

OFFICERS

MARGARET WATSON President
 MARY FAIRFAX STEVENS Vice-President
 JEAN CHALMERS Secretary-Treasurer



Watson Chalmers Stevens

MEMBERS

RUTH ANDERSON	JEAN KIRKPATRICK
CECILIA BAIRD	DOROTHY LEE
FRANCES BELFORD	FLORENCE LITTLE
MARY BUCHHOLZ	KATHERINE MAXWELL
ALICE CALDWELL	LETTIE McKAY
CATHERINE CALDWELL	MARY WELLS McNEIL
FRANCES CASTLEBERRY	NANCY MOORER
KATHLEEN DANIEL	MARY ELIZABETH MORROW
NELLE SCOTT EARTHMAN	ORA MUSE
ELIZABETH ESPY	CAROLINE MYERS
MARY LILLIAN FAIRLY	ALICE REINS
ADELE HAGGART	NELL SCOTT
CAROL HALE	MARY PENNEL SIMONTON
BARTON JACKSON	MARIE STALKER
CATHARINE JONES	ALICE TAYLOR
HORTENSE JONES	EULA TURNER
MARTHA JOHNSON	PEGGY WARE
MARY KENNEDY	VIRGINIA WATSON
MARY ANNE KERNAN	JESSIE WILLIAMS

BETTY WILLIS

International Relations Club is sponsored by the Carnegie Foundation for International Peace and is up to the minute in news of foreign affairs, this year bringing Professor Homero Seris to the campus to talk on the war in Spain only two months after he left the fighting zone of Madrid.



PEN AND BRUSH

OFFICERS

- ZOE WELLS President
 EMMY LOUISE TURCK Vice-President
 JANE WYATT Secretary-Treasurer



Wells Wyatt Turck

The Pen and Brushers instigated a back to Nature movement this year, and have done some interesting outdoor sketches on hikes. In addition they help advertise coming attractions (lectures, plays, etc.) by making posters which illustrate their good natures as well as their talent.

MEMBERS

- | | |
|---------------------|--------------------|
| LUCILE BARNETT | MARTHA JOHNSON |
| LUCY HILL DOTY | MILDRED JOSEPH |
| JANE DRYFOOS | MARY MALONE |
| CAROLYN FORMAN | CAROLYN MYERS |
| ELIZABETH GALBREATH | ISABEL RICHARDSON |
| JANE GUTHRIE | MARJORIE SCOTT |
| ADELE HAGGART | HARRIET STIMSON |
| ELEANOR HALL | HENRIETTA THOMPSON |

PEGGY WILLIS



COTILLION CLUB

OFFICERS

- ALICE TAYLOR President
 ELOISE ESTES Vice-President
 MARY ELLEN WHETSELL Secretary-Treasurer



Taylor Whetsell Estes

MEMBERS

- | | |
|---------------------|-------------------------|
| FRANCES ABBOTT | MARY KNEALE |
| BETTY AYCOCK | MARTHA MARSHALL |
| MARTHA PEEK BROWN | MARY CATHERINE MATTHEWS |
| SUSAN BRYAN | REBECCA McREE |
| DOROTHY CABANISS | BERTHA MERRILL |
| JEAN CHALMERS | NANCY MOORER |
| JANE DRYFOOS | MARY ELIZABETH MORROW |
| CHARLOTTE GOLDEN | HELEN MOSES |
| JANE MOORE HAMILTON | ANNIE HOUSTON NEWTON |
| NELL HEMPHILL | ROSE EVERETT NORTHROSS |
| CATHERINE IVIE | FRANCES ROBINSON |
| DOROTHY JESTER | MIRIAM SANDERS |
| ELLENDER JOHNSON | MARY VENETIA SMITH |
| KATHLEEN KENNEDY | MARIE STALKER |
| HELEN KIRKPATRICK | GRACE TAZEWELL |

ELIZABETH WARREN

Cotillion Club claims those girls who can combine good dancing, good posture, and good appearance. They entertain each other at bi-monthly tea-dances and the college community at large at several annual dances.



POETRY CLUB

OFFICERS

HORTENSE JONES President

WINIFRED KELLERSBERGER Secretary-Treasurer

MEMBERS

SHIRLEY ARMENTROUT

VIRGINIA HILL

MYRL CHAFIN

JUNE MATTHEWS

ELIZABETH ESPY

KATHRYN PRINTUP

JANE GUTHRIE

EVELYN SEARS

CAROL HALE

EISE SEAY

JANE TURNER



Jones

Kellersberger

Poetic expression has a place of its own on the campus, for the Poetry Club encourages this sort of writing. After some of their verse has been accepted in tryouts, the members keep up their writing. It is often printed in the AURORA where the visits of the Muse to the campus are made public.



B . O . Z .

OFFICERS

JUNE MATTHEWS President

JANE GUTHRIE Secretary-Treasurer

MEMBERS

- | | |
|------------------------|-------------------|
| NELL ALLISON | NELL HEMPHILL |
| JEAN BAILEY | VIRGINIA HILL |
| HENRIETTA BLACKWELL | ELIZABETH HOLLIS |
| GOUDYLOCH ERWIN | HORTENSE JONES |
| ELIZABETH ESPY | MARY ANNE KERNAN |
| NELLIE MARGARET GILROY | DOUGLAS LYLE |
| CAROL HALE | JACQUELYN McWHITE |
| HIBERNIA HASSELL | BROOKS SPIVEY |



Guthrie

Matthews

Twenty years ago B. O. Z. members engaged in press writing, now they produce short stories and essays which are read and discussed at informal evening sessions. An unusual feature of this year's program was the January meeting to which several alumnae members came for a reunion with the club.



GLEE CLUB

OFFICERS

- FRANCES STEELE President
 RUTH TATE Vice-President
 AMELIA NICKLES Secretary-Treasurer
 MARY ALICE NEWTON Publicity Chairman

MEMBERS

- | | |
|---------------------|----------------------|
| JEAN BARRY ADAMS | FRANCES MORGAN |
| CAROLINE ARMISTEAD | JANE MOSES |
| LUCILLE CAIRNS | ANNIE HOUSTON NEWTON |
| MILDRED DAVIS | PRIMROSE NOBLE |
| GRACE DUGGAN | ROSE NORTHROSS |
| JANE ESTES | ESTHERE OGDEN |
| JANE MOORE HAMILTON | MARY PAST |
| ALICE HANNAH | MARY EARNEST PERRY |
| MARGARET HANSELL | MARY CLAY PRICE |
| FANNIE B. HARRIS | MIRIAM SANDERS |
| NELL HEMPHILL | SARAH BEATY SLOAN |
| PHYLLIS JOHNSON | MARIE STALKER |
| SARAH JOHNSON | EMILY UNDERWOOD |
| RACHEL KENNEDY | EVELYN WALL |
| VIRGINIA KYLE | ELIZABETH WARREN |
| FLORENCE LASSETER | FRANCES WILSON |
| MARY MALONE | VIRGINIA WOOD |
| LETTIE MCKAY | MARTHA ZELLNER |



Steele
Nickles

Tate
Newton

Preparations for Christmas holidays are never complete without the Christmas Carol Service given by the choir, and it is "only the beginning" of the varied program of the Glee Club, Choir, and Special Chorus. The climax is the presentation of a light opera in the spring, such as Gilbert's and Sullivan's "The Gondoliers" given this year.



COLLEGE CHOIR

FIRST SOPRANOS

JEAN BARRY ADAMS
 CAROLINE ARMISTEAD
 MILDRED DAVIS
 GRACE DUGGAN
 FLORENCE LASSETER
 ROSE NORTHGROSS
 MARY EARNEST PERRY
 FRANCES STEELE
 RUTH TATE
 FRANCES WILSON
 VIRGINIA WOOD

SECOND SOPRANOS

SARAH BASKIN
 TOMMY RUTH BLACKMON
 HENRIETTA BLACKWELL
 ALICE CHEESEMAN
 ESTELLE CUDDY
 NELL ECHOLS
 ELIZABETH FURLOW
 CAROLYN FORMAN
 ANNIE LAURA GALLOWAY
 SAM OLIVE GRIFFIN
 MARGARET HANSELL
 ALICE HANNAH
 ELIZABETH HOLLIS
 MARTHA LEIPOLD
 WAYVE LEWIS
 ELOISE LENNARD
 SARAH MATTHEWS
 EMILY McMORLAND
 REBECCA McREE
 FRANCES MORGAN
 ANNIE HOUSTON NEWTON
 ESTHERE OGDEN
 MARY REINS
 EVELYN SEARS
 LUCILLE SCOTT
 HELEN SIMPSON
 ELIZABETH SKINNER
 RUTH SLACK
 HARRIET STIMSON
 VIRGINIA TUMLIN



CONTRALTOS

LUCILLE CAIRNS
 NELL CHAMLEE
 JANE ESTES
 NELL HEMPHILL
 PHYLLIS JOHNSON
 RACHEL KENNEDY
 VIRGINIA KYLE
 MARTHA LONG
 LETTIE McKay
 JANE MOSES
 MARY ALICE NEWTON
 AMELIA NICKELS
 MARY PRIMROSE NOBLE
 MARY PAST
 FRANCES ROBINSON
 MIRIAM SANDERS
 SARAH BEATY SLOAN
 MARIE STALKER
 MARY ELEANOR STEELE
 EVELYN WALL
 EMILY UNDERWOOD

SPECIAL CHORUS

CAROLINE ARMISTEAD
 NELL CHAMLEE
 JANE MOORE HAMILTON
 RACHEL KENNEDY
 VIRGINIA KYLE
 FLORENCE LASSETER
 MARY MALONE
 FRANCES MORGAN
 JANE MOSES
 ANNIE HOUSTON NEWTON
 MARY ALICE NEWTON
 AMELIA NICKELS
 MARY EARNEST PERRY
 RUTH TATE
 EMILY UNDERWOOD
 EVELYN WALL
 VIRGINIA WOOD



STRING ENSEMBLE



STRING ENSEMBLE MEMBERS

FIRST VIOLINS

MRS. HENRY ROBINSON
ALICE REINS
MISS FLORENCE SMITH

VIOLINCELLO

MARYBELLE CRUGER

SECOND VIOLINS

MR. SCHUYLER CHRISTIAN
BETTY JONES
MARJORIE PRESSLEY
MARY REINS
ISABELLA ROBERTSON

THIRD VIOLINS

BETSY BANKS
MARGARET WATSON

VIOLA

MR. HENRY ROBINSON

PIANIST

JEAN KIRKPATRICK

ORGANIST

TOMMY RUTH BLACKMON

CHRISTIAN W. DIECKMANN, Director

The arrangements for the String Ensemble are made by Mr. Dieckmann himself, and their programs are always favorites on the campus. They have combined several times with students in the piano department to present some concertos for piano with string accompaniment. This year they gave a concert during Alumnae Week-end, and have added their harmony to the chapel programs on various occasions.

BOOK FOUR

Athletics . . .





Mountains

One of the most important features of Northeast Georgia is the Blue Ridge chain of mountains which Nature generously provides with forests surpassing any other in the United States, water power, minerals, and magnificence. A large part of the state's wealth and importance can be attributed to this section because of the wide variety of resources and intangible beauty.



WEARERS OF THE A. S.



FRONT: Johnson, Cary. BACK: Kneale, Stalker, Taylor

FRANCES CARY
MARY JOHNSON

ALICE TAYLOR

MARY KNEALE
MARIE STALKER

Wearers of the school letters "A. S." are those girls who have made 1600 points in participation in the sports on the campus. Only a few girls who are the most outstanding in the various fields of athletics win the letters.

CHEER LEADERS



FRONT: Warren, Echols, Kennedy, Smith. BACK: Merrill, Cheeseman, Stalker, Carmichael

SENIORS
RACHEL KENNEDY
MARIE STALKER

JUNIORS
BERTHA MERRILL
MARY SMITH

SOPHOMORES
CAROLINE CARMICHAEL
ALICE CHEESEMAN

FRESHMEN
NELL ECHOLS
ELIZABETH WARREN





FRONT: Blackshear, Fleece, Cary, Dryfoos, Crowell. BACK: Forman, Lasseter, McMullen, Taylor, Brinton, Kneale, L. Coit.

HOCKEY VARSITY

ELIZABETH BLACKSHEAR
 JOAN BRINTON
 FRANCES CARY
 LAURA COIT
 ANNIE LEE CROWELL
 JANE DRYFOOS

CHARLINE FLEECE
 CAROLYN FORMAN
 MARY KNEALE
 FLORENCE LASSETER
 EMMA McMULLEN
 ALICE TAYLOR

Judging from the crowds of excited on-lookers at all the games this year, hockey has become the most popular out-door sport on the campus. This is probably due to the grand old feeling of autumn in the air and the joy of striking out down the field to make that winning goal or die in the attempt. The Senior team, victorious this year in spite of the rallied forces of the under-classes, featured the star dribbling of Charline Fleece. Jane Dryfoos, Sophomore, Carolyn Forman, and "Fouch" Brinton, Freshmen, brought yells of glee from the stands and a gleam into the eyes of Miss Wilburn. Enthusiasm was also contributed by the delegation who attended Play Day at the University of Georgia and participated in a regular Southeastern Hockey Tournament.





J. Williams, Steele, Garner, Blackshear, Cuddy, E. Williams, Stalker

BASKETBALL VARSITY

ELIZABETH BLACKSHEAR
ESTELLE CUDDY
MARY EVELYN GARNER
JANE MOSES

MARIE STALKER
MARY ELEANOR STEELE
ELIZABETH WILLIAMS
JEAN WILLIAMS

The climax of the basketball season was the brilliant battle between the varsity and sub-varsity teams when crowds turned out to see the spectacular Williams sisters play together. Jean, the younger sister, is a member of the banner-bearing Freshman team which defeated the upper classes in the school tournament. The Senior team, refusing to suffer from wounded dignity, proceeded to transform their guards into excellent forwards or vice-versa, to suit the occasion. Mary Kneale, the most versatile of these, Elizabeth Blackshear for the Juniors, and Meg Garner for the Sophomores exhibited some fine playing. The Brown Jug Contest, a burlesqued but bitter battle at the end of the season, when a team from each dormitory, and the faculty, face each other across the court, was won this year by "the cottages."





Cary, Jester, Little, Belser, Fleece, Taylor, Thing, McCain, Lassetter, Wilson, Jackson

SENIOR TEAM

FRANCES CARY
 Captain
 LUCILE BARNETT
 EDITH BELSER
 CHARLINE FLEECE
 BARTON JACKSON
 DOROTHY JESTER
 MARY JOHNSON
 MARY KNEALE
 FLORENCE LASSETER
 FLORENCE LITTLE
 ISABEL McCAIN
 ALICE TAYLOR
 JULIA THING
 KATHRYN B. WALL
 FRANCES WILSON



H O C

JUNIOR TEAM

FRANCES ROBINSON
 Captain
 NELL ALLISON
 ELIZABETH BLACKSHEAR
 SUSAN BRYAN
 LAURA COIT
 ANN WORTHY JOHNSON
 ELIZA KING
 BERTHA MERRILL
 PRIMROSE NOBLE
 MARY VENETIA SMITH
 ANNE THOMPSON
 MARY NELL TRIBBLE
 LOUISE YOUNG



BACK: Noble, Bryan, King, L. Coit, Thompson, Tribble, Johnson, Smith. FRONT: Robinson, M

SOPHOMORE TEAM

EMMA McMULLEN
 Captain
 ADELAIDE BENSON
 MILDRED COIT
 ANNIE LEE CROWELL
 JANE DRYFOOS
 CATHERINE FARRAR
 JEANNE FLYNT
 JANE MOORE HAMILTON
 CATHERINE IVIE
 ELIZABETH KENNEY
 MARTHA MARSHALL
 MARIE MERRITT
 MARY RUTH MURPHEY
 HELEN MOSES
 FLORA MacGUIRE
 ANNE PURNELL
 MARY ELLEN WHETSELL



BACK: Farrar, Hamilton, Ivie, Benson, Kenney, Marshall, Dryfoos, Moses. FRONT: Whetsell, McMullen, M. Coit, Flynt, MacGuire, Crowell

K E Y



FRESHMAN TEAM

JOAN BRINTON
 Captain
 FRANCES ABBOTT
 HELEN CARSON
 ERNESTINE CASS
 RUTH CRISP
 NELL ECHOLS
 CAROLYN FORMAN
 PENN HAMMOND
 POLLY HEASLETT
 ELEANOR LEWIS
 VIRGINIA MILNER
 MARTHA MOFFETT
 JULIA MOSELEY
 HENRIETTA THOMPSON
 METTE WILLIAMSON

an, Lewis, Moffett, Moseley, Brinton, Heaslett, Hammond, Thompson, Echols, Crisp, Milner, Carson



SENIOR TEAM

ALICE TAYLOR
 Captain
 FRANCES CARY
 MARY KNEALE
 ISABEL McCAIN
 FRANCES MacDONALD
 MARIE STALKER
 JULIA THING

BACK: Stalker, MacDonald, Thing, McCain. FRONT: Cary, Taylor, Kneale.



BASKE

JUNIOR TEAM

ELIZABETH BLACKSHEAR
 Captain
 LAURA COIT
 OLA KELLY
 ELIZA KING
 BERTHA MERRILL
 PRIMROSE NOBLE
 FRANCES ROBINSON
 ANNE THOMPSON



BACK: Noble, King, Merrill, Thompson, Robinson. FRONT: Blackshear, Kelly, Coit.

SOPHOMORE TEAM

JANE MOORE HAMILTON
Captain

CAROLINE CARMICHAEL
ESTELLE CUDDY
MARY EVELYN GARNER
ANNE PURNELL
MARY ELEANOR STEELE
ELIZABETH WILLIAMS



Hamilton, Carmichael, Garner, Purnell, Steele, Williams, Cuddy

BALL

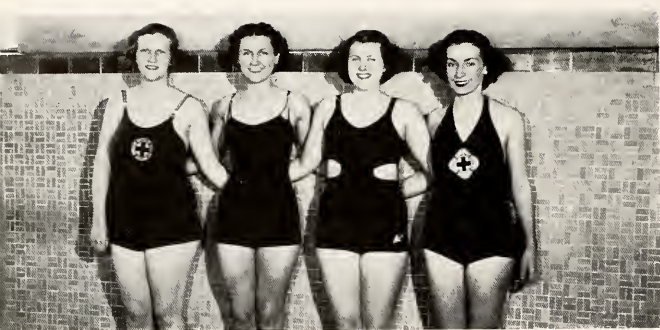


FRESHMAN TEAM

JANE MOSES
Captain

HELEN CARSON
VIRGINIA MILNER
MARTHA MOFFETT
MARY REINS
RUTH SLACK
POLLY WARE
JEAN WILLIAMS

BACK: Reins, Slack. FRONT: Ware, Carson, Moffett, Williams, Moses, Milner.



SENIOR TEAM

MARY JOHNSON
 MARY KNEALE
 FLORENCE LASSETER
 MARIE STALKER
 MARY JANE TIGERT

Tigert, Stalker, Lasseter, Kneale.



LIFE SAVING

S W I M

The Freshmen splashed their way to victory again in the first swimming meet of the year with Juniors coming up to a close second place. Virginia Milner, Freshman speed demon, challenged Peek Brown, a Junior, in the second meet of the year to clinch the title of "water flash."

JUNIOR TEAM

MARTHA PECK BROWN
 JEAN CHALMERS
 BERTHA MERRILL
 ANNE THOMPSON



Thompson, Merrill, Chalmers, M. P. Brown.

SOPHOMORE TEAM

EMMA McMULLEN
LOIS WALTON
CARY WHEELER



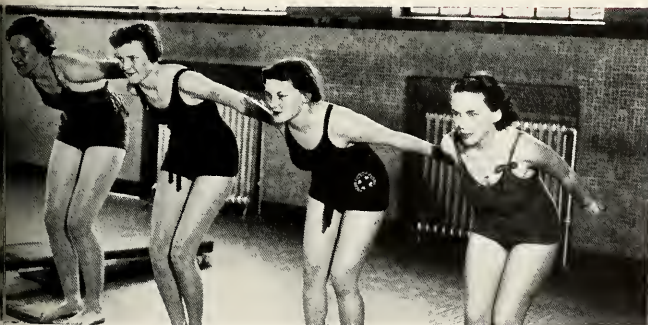
McMullen, Wheeler, Walton.

SWIMMING

The annual water pageant this year, managed by Merrill and starred in by the Swimming Club, was "The Feast of the Lanterns." Expert divers with sparklers in their hands cut lovely figures into the water before the Japanese princess, Tami Okamura, while bright lanterns flickered on the banks of the pool and spectators applauded enthusiastically.



LIFE SAVING



Milner, Holland, S. Matthews, Echols.

FRESHMAN TEAM

NELL ECHOLS
CAROLYN FORMAN
BARBARA HOLLAND
SARA B. MATTHEWS
VIRGINIA MILNER



SWIMMING CLUB
DANCE CLUB

TENNIS CLUB
OUTING CLUB

ATHLETIC CLUBS

Membership in Swimming Club is determined by difficult try-outs, calling for perfection of strokes, expert surface diving, knowledge of life-saving, diving, and long endurance. Besides sponsoring the water pageant, the club sent Bee Merrill and Anne Thompson to the University of Alabama to a Southeastern Swimming Conference.

Tennis Club faced the faculty racketeers over the net during the fall and teams from Emory and Tech in the spring. Besides exhibiting their own skill, they asked distinguished players out from Atlanta to demonstrate the way the game should be played.

This imitation method also appealed to the Dance Club who attempted to imitate peasants, temperamental dancers, and their chief inspiration, Miss Haynes. The club sought to interpret the music of "Valse Triste," "Leibestraum," and Chopin's "Nocturnes."

To those who grow restless from too much indoors, the Outing Club offers diversions. Supper hikes throughout the year called out the nature lovers, and the climax came in the spring when the club went on the annual "Appalachian Trip" to Neil's Gap in North Georgia and climbed Blood Mountain.





GOLF CHAMPIONS
ARCHERY GROUP

TENNIS CHAMPIONS
RIDING GROUP

MINOR SPORTS

Interest in golf is picking up. The number of entries in the fall tournament with the Emory team was twice as large as usual, and a big sensation was caused by Champion Judith Gracey's coming in with low score, followed by Elsie West and Martha Fite.

The school tennis tournament this year saw an exciting finish. The doubles honors went to Frances Steele and Julia Thing who showed their superior skill in handling a racket by beating Mary Kneale and Frances MacDonald after three sets.

An archery tournament, held in the spring, is always the climax for the girls who enjoy target-shooting, just as the spring means horse shows to those who take riding. Among the archery experts are Eloise Estes, winner of the tournament last year; Aileen Shortley and Winifred Kellersberger. Lucille Barnett and Marjorie Scott, on the riding team, led the class in jumping.





BADMINTON

HOCKEY STICK

HIKING SQUAD

MINOR SPORTS

Badminton was a new sport for the winter quarter, and was heartily entered into by the class in Recreational Games. The big event was the tournament in which Frances Cary and Mickey McKee won a hard fought battle.

To get out-of-doors and really enjoy it is the purpose of the hiking squad. Ten-mile hikes, lots of short hikes, and supper hikes must be entered into before membership is given. Jane Dryfoos, Manager of the Hiking Squad, was also the winner this year of the hockey stick presented by the Senior Hockey team to the Sophomore most skilled and co-operative with her team.



Asquiere

1 9 3 7

• THE WOMAN'S MAGAZINE

BEAUTY SECTION

SELECTED BY
PETTY

ARTISTS

ELIZABETH GALBREATH
LUCILLE BARNETT
EMMY LOU TURCK

CARTOONIST

JANE GUTHRIE

FICTION

LETTER FROM AGNES
"THE HEART BREAKER"

POETRY

THE ENGLISH MUSE
THE OTHER ENGLISH MUSE
A SENIOR

FASHIONS

IDEAS FROM SPECIMENS
FOUND ON CAMPUS

COVER DESIGN

BY ALICE CHEESEMAN



FICTION • ART • CARTOONS

FASHIONS • POETRY • BEAUTIES

NOT FOR SALE

PETTY 109 COYLE AVENUE CHICAGO

January 16, 1937.

Miss Eloisa Alexander,
Feature Editor 1937 Silhouette,
Agnes Scott College,
Decatur, Georgia.

Dear Miss Alexander:

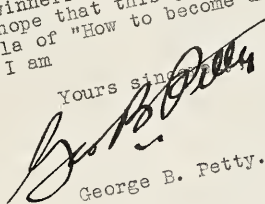
Enclosed are our selection in nun
order:

First, Miss Nancy Moorer,
Second, Miss Zoe Wells,
Third, Miss Rachel Kennedy
Fourth, Miss Mary Reins,
Fifth, Miss Anne Purnell,
Sixth, Miss Lucile Dennison,
Seventh, Miss Jane Moore Hamilton,
Eighth, Miss Frances Wilson,

There were so many good looking girls in
the group from old Scott that we could have
easily had two groups of eight almost equally
beautiful.

It was only after judgment by an eleven-point
beauty test that the winners could be determined,
and with the sincere hope that this judgment is
not the perfect formula of "How to become un-
popular over night", I am

Yours sincerely,



George B. Petty.

GBP
J

Enclosure



Nancy Moore



d

Joe Wells



Rachael Kennedy



Mary Reins



Anne Purnell



Lucile Dennison



d

Jane Moore Hamilton



Frances Wilson



d



Eloisa Alexander



Mary Gillespie



Mary Malone

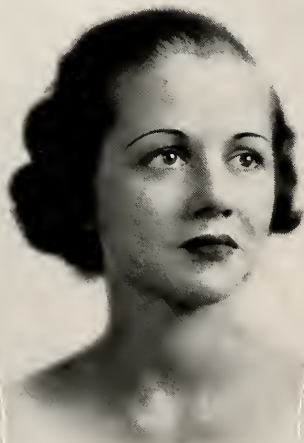


Frances Steele



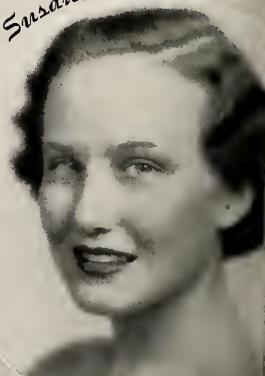
Jean Barry

Maryle Chapin



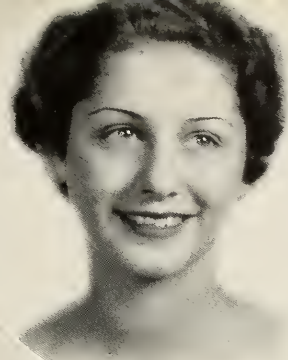
Grace Jazewell

Susan Bryan

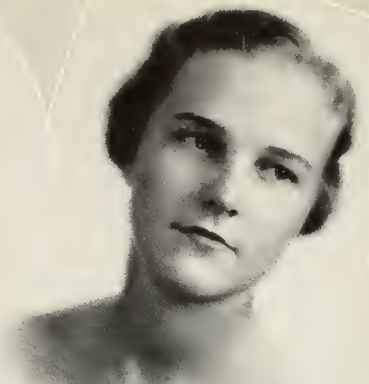




Martha Marshall



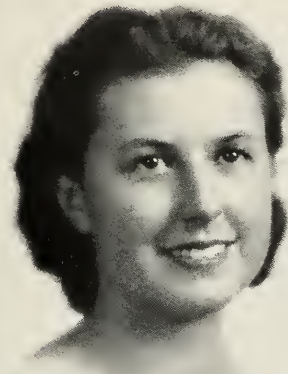
Helen Moses



Amelia Nichols



Helen Shortley

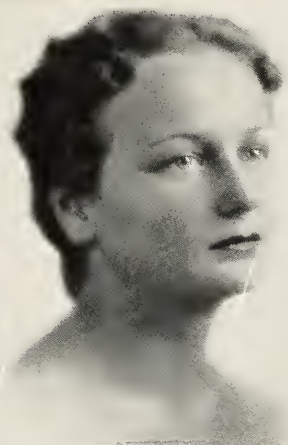


Kay Toole



Gretchen Bubenzer

Ruth Crisp

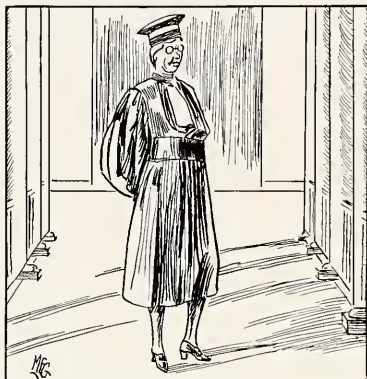


Martha Moffett

Charlotte Golden



QUADRANGLE FASHIONS



La robe rouge, straight from France, sets the pace for academic processions.

WANTED:
Combination cat-and-ant exterminator. See any boarder on A. S. C. campus.



Gone With the Wind



Lose yourself in your clothes—join the Smucker's Union for bigger and brighter flowers.

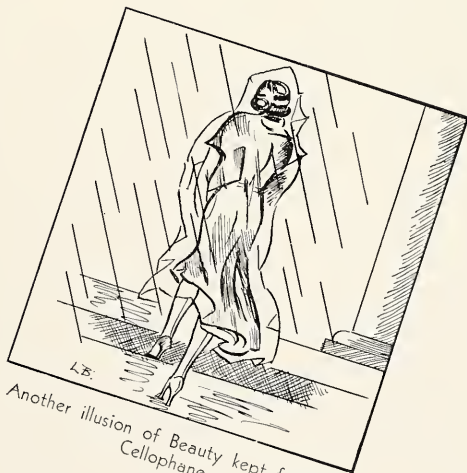
QUADRANGLE FASHIONS



The Boy Scout motto dominates Faculty Fashions.



Before the "Backward Swing" Era we could tell each other apart.



Another illusion of Beauty kept fresh in Cellophane.

WANTED:

One all-enveloping scarf—apply Alice Hannah.

POETRY

Or Attempts

The English Muse

Picture this unfortunate English debater,
Who has to oppose this young girl from
Decatur,
Whose grasp of the facts
About national pacts
Would entice a debator not to oppose but
to date her.



Senior Trials

To Edward VII from Adam
Almost every man has had 'em,
But no wife is so fine
As this Martha of mine.
Folks, I present the Madam!



The Other English Muse

Now this young Decatur debater,
A slick and easy prevaricator.
But the peaceful relations
Of dozens of nations
Demand that the debaters should
mate her.



FICTION

Agnes Scott College
Decatur, Ga.
Saturday (I think)

Dearest—

At last I am forced to face my great problem. You know Agnes Scott teaches you to think and face problems squarely, so I am not afraid. Even all our chapel speakers talk about the problems that Youth faces today. Did you know that we are Youth?

I am now going to be frank—I have made my decision—I can't marry you this summer. You see, that are so many Important Things here. Agnes Scott now has a Cut System! This may seem unimportant to you, darling, but—to yearn and strive for something for three years and then just as our goal is reached, not to be here to enjoy it—why, it's simply unthinkable.

And I am in the process of becoming a new woman. There was a Charm Lady here who helps the girls with their problems—this letter is all problems, but that is how Life is, dear. She (the Lady, not Life) renovated us, and some things she said would help you. I've tried them all, so I know—darling, promise me that since you are the Gypsy Type, definitely, you will concentrate on brighter colors in your clothes—and throw away that horrible brown suit. And I'd better tell you that when we are married—doesn't that sound just too, too,—I shall have carrots, raw, every day, for the Charm Lady says they give you a Lift that nothing else does. It's all part of our new Hollywood Diet—darling, we can't possibly be married next year, 'cause the diet is no good unless continued for two years, so you wouldn't mind if I continued it, would you?

Don't think this is my sole reason—you see, it's a matter of unfinished business. I learned in Psych that when you leave something unfinished, it keeps jumping back into your mind—called perseverance—because your mind is like a sieve I guess. You see there's a course I particularly wanted to take—Comparative Government, so I can talk to you about your work. And I've only the back of your sweater to finish, and I can surely do it by next year. And, darling, with four years of college I'll be so well-rounded. All the girls here are developing Attitudes toward Life, and Appreciation of Art and Music and History and Economics and Things you would want me to have. After all, that is What College is For. You may not like what you call my Radical Friends here, but these girls have Ideas, and I need another year to get some. Oh, darling, it's not that I don't want you at our Dance, it's simply that we don't Dance, and that is another problem that we girls want to face next year.

I feel so relieved now that we have this understanding. You know I am always, whenever we get married,

Your

Agnes.

P. S. Anyway, Mother says I can't marry till I finish school.

WANTED
one tooth-brush for
Alberta Palmour



Freshman Life

Autograph hounds during freshman initiation.

Whose your roommate? Where're you from?—and all that sort of thing—

Upper classmen give the freshmen the "keys" to the campus.

Baggage arrives—two weeks late!

Sponsor Kellersberger explains that little purple handbook.

Freshmen register in the front of Main.

Freshie makes her debut—at the Mortar Board Party.

Lutie and Frances interior decorate with curtains.

The parties again—this game was a drawing card.

Going or coming, Margaret?

"Back" to Inman—but we've got your number!





Freshman-Sophomore Stunt

THE ANNUAL "CATFIGHT" between the Freshmen and the Sophomores was won this year for the second time by the Class of 1939. In their "Sophy Seemphony" they brought to life all the well-known animated cartoon characters with the big strong Soph Eye in the role of innocent little Fresh Pea's protector. On the other hand, the Freshies directed by Marjorie Boggs went classical and gave the story of "Golden Appleplexy," in which the Rats (aided by Miss Diana Scandrett and the Junior Spinach Chorus) defeat the Sophisto-cats and win the Golden Apple. But evidently the Black Cat doesn't like apples, for he went the other way—in fact, straight into the hands of Jane Dryfoos, the Sophomore Chairman.





Dormitory Life

Mary relaxes in a "comfortably equipped, lighted and heated residence hall."* (See footnote.)

Bet your laundry is on the bottom, Caroline!

Getting up laundry—a traditional drudgery—

What luck—early to bed, food, and a magazine!!

This is just propaganda—but don't we love to study??

Modernize your room with checker-board linoleum.

Sue Bry-ann—phone on 3rd (time limit: 1 hr. 45 min.)

"This is the way we wash our clothes."

Grace "smooths things over" for her date. She even rolled up her hair.

Freshmen Moffett and Barnes hard at work.

Who's this absorbed in the home town scandal sheet?

Burning the midnight oil—guess that theme is due tomorrow.

A "typical" college room as shown at the Fair.

Drinking water—a la Miss Osborne—

**Agnes Scott Bulletin* for 1937-38, page 131.





Campus Life

Grace is keeping Miss Hanley's library in order.

Breakfast—with eggs and no grits—

Dr. Lacy, Laura, and Samille chat after chapel.

Boyd Cottage goes to town!

"Concentrating" on the library terrace.

Infirmary, B.C. (Before Cuts)

\$1.80 to the Terminal—but it's worth it, Santa Claus!

The Murphy Candler is a good place to spend free periods.

Say, Ola, is that YOUR letter?

What, another holiday—
or just the same one?

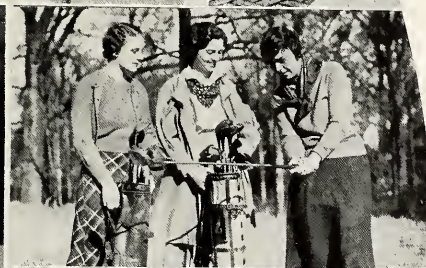
Wait a minute, girls,
did you get those
stamps you owe me??

She has a heavy date,
I can tell!

Marie, don't tell me
you are going to play
off the ping-pong
tournament—

Miss Wilburn showing
that Bob Jones' grip.

"Rooty - toot - toot -
we're the girls of the
institute!"





Social Life

Marjorie knows A. S. girls don't smoke.

Tech and Agnes Scott freshmen get together.

And men are just all over the place!

Elsie: "And this is Stone Mountain."

Meet me at Miner and Carter's.

Wednesday night coffee in the
Murphy Candler.

The thrill that comes once in a life-
time—The Junior Banquet!

I guess Bob is signing in for
one of his sisters (???)

It looks like the Alps, but
it's just Stone Mountain
again—

A sure 'nough birthday
party with cake and
candles.

The reception after the
Stuart Chase lecture—
thought you said we'd
have cookies—

More corsages and
tux at the Junior Ban-
quet.





Academic Side-Lights

Seniors acting their age for a change on Little Girl's Day.

Tea for two!

But soon all the kids came to the tea party!

Everybody makes merry during Chapel time.

Hannah shows what the well-dressed youngster in Cass wears—

Let's jump rope just one more time.

At the traditional Investiture—assuming Senior dignity.

Sisters and sister classes greet.

Friends and relations give congratulations.

More facilitations!

The sister class led—

and close behind were the seniors.

Every one's family came, too.

The procession from Inman to the Chapel.

The marshals — Miss "Alex" and Mr. Stukes.

Ruth Runyan, class mascot.

Two new angles on the college campus!

The principals at the dedication of the new library.





Blackfriars' Plays

BLACKFRIARS PRESENTS two plays annually under the competent direction of Miss Frances K. Gooch.

SPRING DANCE by Philip Barry was presented Feb. 13, the night of the traditional Junior Banquet. The scene was laid in a Sorority house at a girls' school in New England. Kitty Printup, as Alex, furnished the "heart trouble," playing opposite John Tillman, otherwise known as Sam Thatcher. Jeanne Flynt as "Scatterbrain" Sally and Sue Goodwyn, beautiful but dumb, Lib Cousins, and Lucille Cairns were the other schoolgirls.

DOUBLE DOOR by Elizabeth McFadden was given Nov. 25th. In contrast to the other production, it was a dramatic characterplay. Kathryn Wall, as the contemptible Victoria Van Brett, found her powers over the household broken when Anne Darrow (Kay Toole) married into the family. The action was intensely gripping, and each member of the cast was a distinctive and forceful personality.

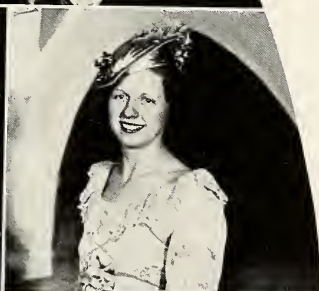




Founder's Day and the Operetta

Founder's Day, February 22nd, is the time when the Seniors become ladies and gentlemen of colonial America for a night. Daniel Boone (Alice Hannah), Patrick Henry (Nellie M. Gilroy), and other celebrities gathered after the banquet to witness the traditional minuet. This year Martha Summers and Isabel McCain impersonated the honor guests, Martha and George Washington.

In the spring the Glee Club, under the direction of Mr. Lewis Johnson, presented the operetta, "The Gondoliers," a delightful comedy by Gilbert and Sullivan. It was given on two nights so that a larger number of students would be able to participate. Ruth Tate and Betty Lou Smith doubled in the role of Giannetta, while Mary Alice Newton and Virginia Kyle were Tessa. Paul Overby, of Atlanta, played the male lead both nights.

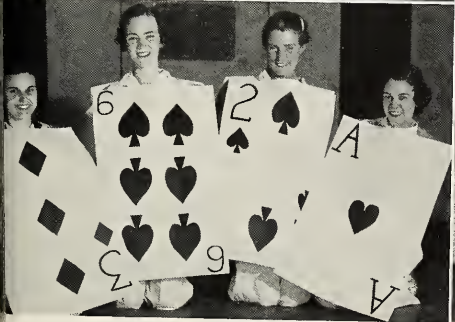
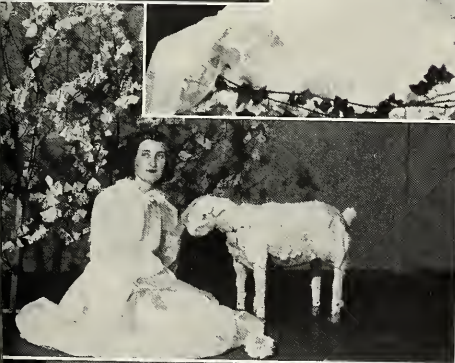




Mardi Gras and Senior Opera

MARDI GRAS, presented by the Junior Class on February 6th, was tops in fun, with the Freshman Class walking off with all the honors. Their float representing "The Gold Diggers of 1937" was selected as the most beautiful, and their King Jean Williams and Queen Rebecca McRee ruled over the festivities. Other prize-winning floats representing movie titles were "The Good Earth" and "Smilin' Through."

LA TRAGIC ARDOR, OR T. B. OR NOT T. B., presented by the Senioropolitan Opera Company, was the heart-rending love tragedy of l'mille (Mary Perry), thus named because she ain't what she used to be, and Ah! Men (Alice Hannah). The hero and heroine are daffy about each other, but their gay life is interrupted by Ah! Men's family, Papa (Marie Stalker), Aunt E. Fulla Bull (Mary Jane Tigert), and Aunt Misselaney (Mary Jane King). It is not until the end that the two ardent but ill-fated lovers are again reunited, but only for a few minutes for l'mille dies and her soul dertightly but derteterminedly ascends.





May Day

One of the most colorful events of the school calendar is the annual May Day Festival. With stately beauty, Lucile Dennison and her maid-of-honor, Frances Wilson, ruled with the court. Their loveliness was enhanced by dresses of pastel shades and sprays of mixed garden flowers tied with contrasting ribbons. The members of the court are: Front Row: Frances Steele, Mary Reins, Grace Tazwell, Frances Wilson, maid - of - honor, Lucile Dennison, queen, Jane Moore Hamilton, Aileen Shortley, Eloisa Alexander. Back Row: Rachael Kennedy, Nancy Moorer, Myrl Chafin, Alice Taylor, Sue Bryan, Martha Marshall, Mary Malone, Kay Toole.

The presentation was the story of John Milton's **Comus**, bringing all the beauty and splendor of the 17th century to our own campus. Charline Fleece, as the wicked magician Comus, entices unsuspecting mortals with his fatal cup. But, protected by the Attendant Spirit, the lady of rank (June Matthews) escapes his intrigue.

The brilliant costuming, gay music, and dancing combined to make a delightful spectacle.



LIST OF ADVERTISERS

AGNES SCOTT COLLEGE
BOWEN PRESS
HOTEL CANDLER
HOUSE OPTICAL CO.
ROBERTS MARBLE CO.
THE TAVERN
MUSE'S
J. P. STEVENS
JAS. M. ALSOBROOK
McCONNELL'S 5 & 10c STORE
E. L. KIDD

MRS. COOPER
THE HOME FOLKS' GRILL
THE S & W
EASTMAN KODAK STORES, INC.
ORIGINAL WAFFLE SHOP
W. Z. TURNER LUGGAGE CO.
J. P. ALLEN & CO.
L. CHAJAGE
EAGER AND SIMPSON
DeKALB THEATRE
WALTER BALLARD OPTICAL CO.
BRUCE TERMINIX CO.
MORNINGSIDE BEAUTY SOLON
HARRY F. DOBBS, INC.
SILHOUETTE TEA ROOM
THE CROWN CANDY CO.
KAMPER'S
EDWARDS & SAYWARD
HARRISON'S
THE DRAUGHON SCHOOL OF COMMERCE
VERA BEAUTY SHOP
ELLIOTTS' PEACHTREE STUDIO
THE SELIG CO.
THE COCA-COLA CO.
COMPLIMENTS OF AN ALUMNA
ADOLPHE'S

AGNES SCOTT
COLLEGE



A College for Women



DECATUR, GEORGIA

BOWEN PRESS

PRINTERS *and* PUBLISHERS

421 Church Street

DECATUR ✓ GEORGIA

HOTEL CANDLER

The Pride of Decatur

NO BETTER HOTEL IN GEORGIA

House Optical Company

34 Walton Street, N. W.
Grant Building

Better Glasses by Oculists'
(M. D.) Prescriptions

WAlnut 5227 Atlanta, Ga.

You Are Invited to Visit the Display
Rooms of the

Roberts Marble Company

Manufacturers of Fine Memorials

at 108 Ponce de Leon Ave., N. E.

Near Peachtree St.
WAlnut 6163

You will see the most Modern Memorials . . .
Something entirely new in Stone and Finish
See your Monument before it is erected

THE TAVERN

*The South's Most Unique and
Charming Tea Room*

625 Peachtree St., N. E.

For Him . . .

. . . for Her
the Clothes You Prefer

MUSE'S

The Style Center of the South



ENGRAVED
Wedding Announcements
Invitations
At Homes
Visiting Cards

Monogrammed
STATIONERY

The NAME
J. P. STEVENS
Engraving Co.

IS A TRADITION
for QUALITY

103 PEACHTREE STREET, ATLANTA

Compliments of . . .

JAS. M. ALSOBROOK
DENTIST

202 Masonic Temple Bldg.
DECATUR ✓ GEORGIA

•
McCONNELL'S 5 AND 10c
STORE

DECATUR ✓ GEORGIA
•

E. L. KIDD

•
Radio and Electric Shop

•
105 E. Court Square
DECATUR ✓ GEORGIA


Compliments of . . .

an Alumna

◆◆◆
MRS. COOPER

Decatur Woman's Exchange
132 E. Ponce de Leon

◆◆◆


GOOD FOOD

. . . is . . .

GOOD HEALTH

THE HOME FOLKS'
GRILL

◆
DECATUR ✓ GEORGIA

S & W
CAFETERIA

189-191 Peachtree Street



Bring Us Your Kodak Film
for Expert Finishing

*Correct Developing Means
Better Pictures*

Eastman Kodak Stores, Inc.
EVERYTHING PHOTOGRAPHIC

183 Peachtree ATLANTA

ORIGINAL WAFFLE SHOP
RESTAURANT

STEAKS and CHOPS
Famous for Fine Foods

62 Pryor, N. E. Just Below Candler Bldg.

J. D. CHOTAS, Manager

W. Z. Turner Luggage Co.

•
Ladies' Purses
Modern Luggage

•
219 PEACHTREE STREET
WALnut 6914

L. CHAJAGE

•
Dixie's Leading Furrier
Expert Restyling

•
220 PEACHTREE STREET

For the College Girl . . .

Carter, Formfit, MisSimplicity and
Lily of France Girdles

*Her Secret and Maiden Form
Brassieres*

EAGER AND SIMPSON

24 Cain Street, N. E.



Compliments

... of ...

J. P. ALLEN & CO.
"The Store All Women Know"



DEKALB
THEATRE



BALLARD'S
THREE STORES

●
It is essential that your optician is
competent to fill your oculist
prescription correctly

●
WALTER BALLARD
OPTICAL COMPANY

THREE STORES:

105 Peachtree Street, N. E.

MEDICAL ARTS BLDG.
382 Peachtree Street, N. E.

DOCTORS' BLDG.
408 Peachtree Street, N. E.

ATLANTA ✓ GEORGIA

TERMITES
*For Free Inspections of Your
Property—Call*

BRUCE TERMINIX CO.

109 Ponce de Leon Ave., N. E.

Phone Walnut 3131

Morningside Beauty Salon

1590 Piedmont Road
MR. SMITH and MR. FREEMAN
Proprietors

For Appointments call
HEmlock 4818

Only Expert Operators

HARRY F. DOBBS, INC.

●
Hotel and Restaurant
Supplies

●
285 PEACHTREE STREET, N. E.

Compliments of . . .

SILHOUETTE TEA ROOM

Mrs. Kerrison

"On the Campus"

Compliments

of



THE CROWN
CANDY CO.

KAMPER'S

PURE FOOD STORES



57 Years of
Quality and Service



THREE STORES IN ATLANTA



"When Buying Foods Insist On Having the Best"

EDWARDS & SAYWARD

ROBERT LOGAN, Assistant



ARCHITECTS



Atlanta

Georgia

"THE CHOICE OF THE
COLLEGE GIRL"



Meet Your Friends at

HARRISON'S

THE DRAUGHON SCHOOL of COMMERCE

High School Graduation and Character
References ✓ Entrance Requirements

Better Than 60 Positions
Filled per Month

ATLANTA



GEORGIA

VERA BEAUTY SHOP

Special Prices for A. S. Girls

East Ponce de Leon

DECATUR



GEORGIA

ELLIOTTS'
PEACHTREE
STUDIO

*"Better
Photographs"*

•
PHOTOGRAPHERS

TO THE
1937
Gilhouette

•
PARAMOUNT
THEATRE
BUILDING
ATLANTA

USE...

SE-FLY-GO

Does not Stain.
Has Pleasant Odor.

REALLY KILLS INSECTS

Don't be worried and bothered
by flies and mosquitoes—Start
Now!

USE! SE-FLY-GO

Made by

THE SELIG CO.

MANUFACTURERS
ATLANTA

EST. 1896



Miss Ruth Crisp Has Her Beauty Work
Done at Adolphe's

Charm and good grooming go hand in hand. Many of Atlanta's loveliest ladies depend on the artistry of Adolphe and his capable staff for smart and becoming hair cutting and arrangement, manicures, scalp treatments, permanent waves, facials, etc.

ADOLPHE'S

HEmlock 2110

Peachtree at Ponce de Leon



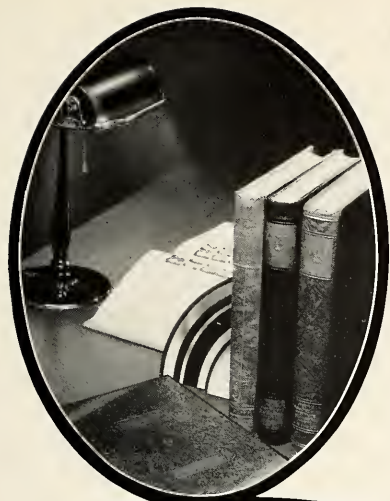
Pure
refreshment

Patronize Our Advertisers

THE BUSINESS STAFF

wishes to express its appreciation to the advertisers
and other friends who, by their support, have
made possible this issue of the

SILHOUETTE



QUALITY

... a word that can be applied to engravings only when produced by highly skilled craftsmen supplied with modern facilities.

The growth of our Annual business is ample proof of the quality of our plates.

JOURNAL ENGRAVING CO.

JOURNAL BLDG.

ATLANTA GA.

In Printing

THERE ARE MANY REASONS WHY
SUCCESSFUL ANNUALS REQUIRE
THE SERVICES OF EXPERIENCED
AND EXPERT CRAFTSMEN

FOOTE & DAVIES CO.

HAVE THESE SERVICES . . . and
the most necessary components of
all really fine books including
A SPECIAL ANNUAL SALES
AND SERVICE ORGANIZATION
CREATIVE DESIGNERS AND
LAYOUT ARTISTS • ABUNDANT
EQUIPMENT • MODERN AND
COMPLETE • PRICES REPRESENTING
MAXIMUM IN VALUE



ATLANTA
GEORGIA

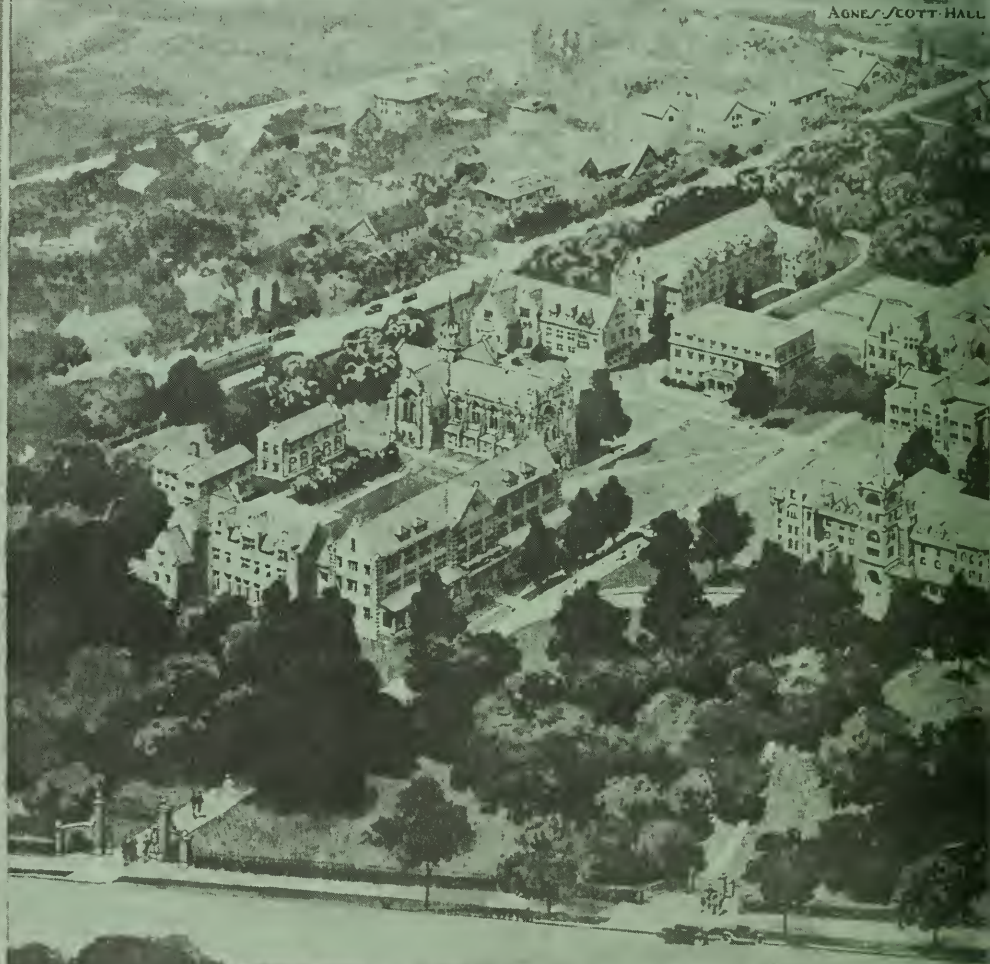
11

FACULTY-HOUSE
ALUMNAE HALL
EXTENSION-OF-INMAN-HALL

CHAPEL
INMAN-HALL
INFIRMARY

HOME-DEPARTMENT-BUILDING
SCIENCE-HALL

PRESIDENTS
GYMNASIUM
LIBRARY
AGNES-SCOTT-HALL



DEVELOPMENT-OF-AGNES-S

OLIVE ARBORETUM

THEATRE

CULTURE BUILDING

ATHLETIC FIELD

BUTTRICK HALL

REBEKAH SCOTT HALL

BOILER HOUSE LAUNDRY

DORMITORY GROUP

TENNIS COURT

MUSIC BUILDING

WESLEYAN COLLEGE - DECATUR - GEORGIA

