




SILHOUETTE







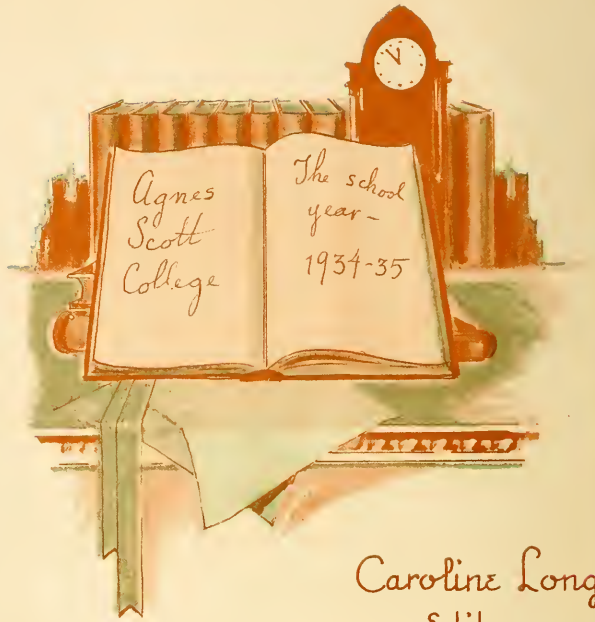
Digitized by the Internet Archive  
in 2010 with funding from  
Lyrasis Members and Sloan Foundation

<http://www.archive.org/details/silhouette193531agne>

1934 SEPTEMBER 1934						
SUN MON TUE WED THU FRI SAT						
						1
2	3	4	5	6	7	8
9	10	11	12	13	14	15
16	17					
23 /30	24					



# The Silhouette



Caroline Long  
Editor  
Betty Lou Houck  
Business Manager

# The Silhouette 1935

Published by the students of  
Agnes Scott College  
Decatur Georgia

Leaves from  
Diary

Unpacking-  
start to classes  
to-morrow


Thinking about  
last night's  
date

Holiday

Flunked  
exam







Unpacking  
start to classes  
to-morrow

Thinking about  
last night's  
date

Holiday

Flunked  
exam

~~65903~~  
65903

# Dedication

We dedicate the SILHOUETTE  
of 1935 to the Mothers and  
Fathers whose inestimable love  
and cherished ambitions for us  
have made these years at Agnes  
Scott possible.



# Preface

The Staff of the 1935 SILHOUETTE attempts to give an accurate picture of life on the campus of Agnes Scott College. We hope, as the years pass, this volume will be a source of recurring pleasure in recalling memories of student activities and interests during the year 1934-35.

One of the most frequent methods of preserving a lasting record is by keeping a diary from day to day; therefore this idea has been embodied in our theme. As a diary preserves memories throughout the years we have attempted to compile this volume in its likeness.



Leaves from  
Diary

School Begins

Classes Begin

Features

Out of Classes

Pastimes

# School Begins



S.  
C.  
O.









As she sees Agnes Scott





















ZW

She registers

## BOARD OF TRUSTEES

J. K. ORR, Chairman . . . . .	Atlanta
C. M. CANDLER . . . . .	Decatur
W. C. VEREEN . . . . .	Moultrie, Ga.
J. S. LYONS . . . . .	Atlanta
F. M. INMAN . . . . .	Atlanta
MRS. SAMUEL M. INMAN . . . . .	Atlanta
MRS. C. E. HARMAN . . . . .	Atlanta
MISS MARY WALLACE KIRK . . . . .	Tuscumbia, Ala.
D. P. McGEACHY . . . . .	Decatur
R. O. FLINN . . . . .	Atlanta
H. T. McINTOSH . . . . .	Albany, Ga.
J. R. McCAIN . . . . .	Decatur
J. J. SCOTT . . . . .	Decatur
W. A. BELLINGRATH . . . . .	Montgomery, Ala.
G. SCOTT CANDLER . . . . .	Decatur
E. D. BROWNLEE . . . . .	Sanford, Fla.
J. BULOW CAMPBELL . . . . .	Atlanta
D. A. DUNSEITH . . . . .	Clearwater, Fla.
MISS NANNETTE HOPKINS . . . . .	Decatur
JOHN McMILLAN . . . . .	Stockton, Ala.
W. J. RUSHTON . . . . .	Birmingham, Ala.
GEORGE WINSHIP . . . . .	Atlanta
WARNER H. DuBOSE . . . . .	Mobile, Ala.
FRANCIS M. HOLT . . . . .	Jacksonville, Fla.
MRS. J. F. DURRETT . . . . .	Atlanta





SIDNEY DICKINSON'S PORTRAIT OF DR. J. R. McCAIN  
The portrait was a gift of the Student Body, the Faculty and the Alumnae



PRESIDENT

JAMES ROSS MCCAIN, A.B., M.A., LL.D., Ph.D.

Erskine College, University of Chicago,  
Columbia University, Davidson College



DEAN

NANNETTE HOPKINS, Litt.D., Ph.D.  
University of Georgia, Oglethorpe University.

# ADMINISTRATION



STUKES

REGISTRAR

SAMUEL GUERRY STUKES, A.B., B.D., M.A.

SECRETARY TO THE REGISTRAR

GLADYS R. CURTIS

TREASURER

J. C. TART

RESIDENT NURSES

HARRIET V. DAUGHERTY, R.N.

EMILIE THOMAS, R.N.



TART

BUSINESS MANAGER

R. B. CUNNINGHAM, B.S.

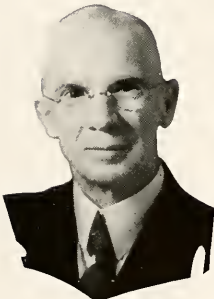
SECRETARY TO THE BUSINESS MANAGER

EMMIE J. ANSLEY

HOUSEKEEPERS

JENNIE DUNBAR FINNELL

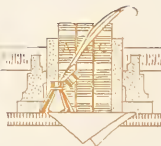
LENA DAVIES



CUNNINGHAM

MATRON

EMMA E. MILLER





# FACULTY

## DEPARTMENT OF BIBLE

ALMA WILLIS SYDENSTRICKER, M.A., Ph.D.  
Wooster University  
PROFESSOR

JAMES THORNWELL GILLESPIE, A.B., B.D., TH.M., Ph.D.  
University of South Carolina, Columbia Theological Seminary,  
Louisville Presbyterian Seminary, Southern Baptist Theological  
Seminary  
ASSOCIATE PROFESSOR



Sydenstricker

## DEPARTMENT OF BIOLOGY

MARY STUART MacDOUGALL, A.B., M.S., Ph.D.  
Randolph-Macon Woman's College, University of  
Chicago, Columbia University  
PROFESSOR

MARY WESTALL, A.B., M.A., Ph.D.\*  
Randolph-Macon Woman's College, Columbia University,  
University of Chicago  
ASSOCIATE PROFESSOR

THOMAS W. WHITAKER, B.S., M.S., Ph.D.  
University of California, University of Virginia  
ACTING ASSOCIATE PROFESSOR

BLANCHE MILLER, A.B., M.S.  
Agnes Scott College, Emory University.  
INSTRUCTOR IN BIOLOGY

SARAH B. BOWMAN, B.A.  
Agnes Scott College  
INSTRUCTOR IN BIOLOGY



MacDougall

## DEPARTMENT OF CHEMISTRY

ROBERT B. HOLT, A.B., M.S.  
University of Wisconsin, University of Chicago.  
PROFESSOR

PHILIPPA GARTH GILCHRIST, A.B., M.S., Ph.D.  
Agnes Scott College, University of Wisconsin  
ASSOCIATE PROFESSOR

MARGARET WHITINGTON DAVIS, A.B.  
Agnes Scott College  
INSTRUCTOR



Holt

\*On leave of absence.



# FACULTY

## DEPARTMENT OF ECONOMICS AND SOCIOLOGY



Wright

JAMES M. WRIGHT, A.B., Ph.D.  
William Jewell College, Johns Hopkins University  
PROFESSOR

ARTHUR F. RAPER, A.B., M.A., Ph.D.  
Vanderbilt, University of North Carolina  
ACTING PROFESSOR OF SOCIOLOGY

## DEPARTMENT OF ENGLISH

GEORGE P. HAYES, A.B., M.A., Ph.D.  
Swarthmore College, Harvard University  
PROFESSOR

LOUISE McKINNEY  
PROFESSOR

EMMA MAY LANEY, A.B., M.A., Ph.D.  
Mississippi State College for Women, Columbia University,  
Yale University  
ASSOCIATE PROFESSOR

ANNIE MAY CHRISTIE, A.B., M.A.  
Brenau College, Columbia University  
ASSISTANT PROFESSOR

JANEF PRESTON, A.B., M.A.  
Agnes Scott College, Columbia University  
ASSISTANT PROFESSOR

ELLEN DOUGLAS LEYBURN, A.B., M.A., Ph.D.  
Agnes Scott College, Radcliffe College, Yale University  
INSTRUCTOR

FRANCES K. GOOCH, Ph.B., M.A.  
University of Chicago, Graduate Boston School of Expression  
ASSOCIATE PROFESSOR

MARION RUSSELL VAUGHAN, A.B.  
Agnes Scott College  
ASSISTANT IN SPOKEN ENGLISH



Hayes

## DEPARTMENT OF FRENCH

LUCILE ALEXANDER, A.B., M.A.  
Agnes Scott College, Columbia University  
PROFESSOR

LOUISE HALE, A.B., M.A.  
Smith College, University of Chicago  
ASSOCIATE PROFESSOR

MARGARET TAYLOR PHYTHIAN, A.B., M.A.  
Agnes Scott College, University of Cincinnati  
ASSISTANT PROFESSOR

THELMA RICHMOND, A.B.  
Agnes Scott College  
ASSISTANT PROFESSOR



Alexander



# FACULTY

## DEPARTMENT OF GERMAN AND SPANISH

MURIEL HARN, A.B., Ph.D.  
Goucher College, Johns Hopkins University  
PROFESSOR

MELISSA ANNIS CILLEY, A.B., M.A.  
University of New Hampshire, University of Wisconsin  
ASSISTANT PROFESSOR OF SPANISH



Harn



Torrance

## DEPARTMENT OF GREEK

CATHERINE TORRANCE, A.B., M.A., Ph.D.  
University of Chicago  
PROFESSOR

MARTHA STANSFIELD, A.B., M.A., Ph.D.  
Agnes Scott College, University of Chicago  
ASSOCIATE PROFESSOR OF GREEK AND LATIN

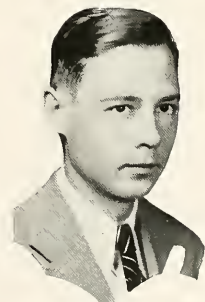
## DEPARTMENT OF HISTORY

PHILIP DAVIDSON, JR., B.S., M.A., Ph.D.  
University of Mississippi, University of Chicago  
PROFESSOR

ELIZABETH F. JACKSON, A.B., M.A., Ph.D.  
Wellesley College, University of Pennsylvania  
ASSOCIATE PROFESSOR

FLORENCE E. SMITH, A.B., M.A., Ph.D.  
Westhampton College, University of Chicago  
ASSISTANT PROFESSOR

LOUISE GARLAND LEWIS  
University of Chicago, University of Paris, Art Institute,  
Chicago, Academie Julian, Ecole Delacluse  
PROFESSOR OF ART AND ART HISTORY



Davidson



# FACULTY



Smith

## DEPARTMENT OF LATIN

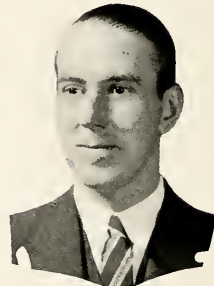
LILLIAN S. SMITH, A.B., M.A., Ph.D.  
Syracuse University, Cornell University  
PROFESSOR

MARTHA STANSFIELD, A.B., M.A., Ph.D.  
Agnes Scott College, University of Chicago  
ASSOCIATE PROFESSOR

## DEPARTMENT OF MATHEMATICS

HENRY ROBINSON, B.S., C.E., M.A., Ph.D.  
University of Georgia, Johns Hopkins University  
PROFESSOR

LESLIE JANET GAYLORD, A.B., M.S.  
Lake Erie College, University of Chicago  
ASSISTANT PROFESSOR



Robinson

## DEPARTMENT OF MUSIC

CHRISTIAN W. DIECKMANN, F.A.G.O.  
Fellow of the American Guild of Organists  
PROFESSOR

LEWIS H. JOHNSON  
Student of William Nelson Burritt, New York,  
Alexander Heinneman, Berlin,  
Arthur J. Hubbard, Boston  
VOICE

AGNES ADAMS STOKES, A.B.  
Agnes Scott College, Graduate of Atlanta  
Conservatory of Music  
VIOLIN

EDNA E. BARTHOLOMEW  
Royal Conservatory, Leipzig  
PIANO



Dieckmann



## FACULTY

### DEPARTMENT OF PHYSICS AND ASTRONOMY

SCHUYLER MEDLOCK CHRISTIAN, B.S., M.S., M.A., Ph.D.  
Emory University, Harvard University  
PROFESSOR



Christian

### DEPARTMENT OF PHILOSOPHY AND EDUCATION

SAMUEL GUERRY STUKES, A.B., M.A., B.D.  
Davidson College, Princeton University, Princeton Seminary  
PROFESSOR



Stukes

EMILY S. DEXTER, A.B., M.A., Ph.D.  
Ripon College, University of Wisconsin  
ASSOCIATE PROFESSOR

KATHERINE TAIT OMWAKE, A.B., M.A., Ph.D.  
George Washington University  
ASSISTANT PROFESSOR

### LIBRARY

EDNA RUTH HANLEY, A.B., B.A.L.S.  
Bluffton College, University of Michigan  
LIBRARIAN

GWENDELIN N. MILLER, A.B., B.A.L.S.  
University of Michigan  
ASSISTANT LIBRARIAN

ADA PAGE FOOTÉ, A.B., B.A.L.S.  
Mississippi State College for Women,  
Emory University  
ASSISTANT LIBRARIAN

MILDRED HOOTEN, A.B.  
Agnes Scott College  
ASSISTANT LIBRARIAN



Hanley



# FACULTY

## DEPARTMENT OF PHYSICAL EDUCATION



Sweet

MARY F. SWEET, M.D., F.A.C.P.  
Syracuse University, New England Hospital, Boston  
COLLEGE PHYSICIAN

LLEWELLYN WILBURN, A.B., M.A.  
Agnes Scott College, Columbia University  
PROFESSOR OF HYGIENE AND ASSOCIATE PROFESSOR  
OF PHYSICAL EDUCATION



Wilburn

HARRIET HAYNES, A.B., M.A.  
Randolph-Macon Woman's College, Columbia University  
ASSISTANT PROFESSOR OF PHYSICAL EDUCATION

EUGENIE LOUISE DOZIER, A.B.  
Agnes Scott College  
INSTRUCTOR IN PHYSICAL EDUCATION



Scandrett

EDNA PAGE ACKERMAN, A.B.  
Agnes Scott College  
ASSISTANT IN PHYSICAL EDUCATION

CARRIE SCANDRETT, A.B., M.A.  
Agnes Scott College  
ASSISTANT DEAN

MARGARET BELL, A.B.  
Agnes Scott College  
SECRETARY TO THE DEAN



# Classes Begin





Sweet

HARRIET HAY  
Randolph-Macon Woman's  
ASSISTANT PROFESSOR

EUGENIE LOU  
Agnes Sc  
INSTRUCTOR IN PH



Scandrett











Senior



CHRISTIE

HAYNES

CHARLES RAPER

HOLT

## ADVISERS AND MASCOT

MISS ANNIE MAY CHRISTIE

MISS HARRIETTE HAYNES

MR. ROBERT B. HOLT

CHARLES RAPER  
Mascot





Left to Right: ALEXANDER, ESPY, SHUTZE

## SENIOR CLASS OFFICERS

ELIZABETH CALL ALEXANDER  
President

FRANCES KATHERYN ESPY  
Vice-President

ALSINE SHUTZE  
Secretary and Treasurer



# SILHOUETTE



M. ADAMS

M. T. ADAMS

ALEXANDER

## 1935

MARIE ADAMS

Moultrie, Ga.

HISTORY

Citizenship Club, '34, '35.

MARY THOMAS ADAMS

Eatonton, Ga.

ENGLISH

AGONISTIC Reporter, '33, '34, '35; Chemistry Club, '33; Citizenship Club, '35; Granddaughters' Club, '33, '34, '35; International Relations Club, '34, '35; K. U. B., '33, '34, '35; Y. W. C. A. Cabinet, '34, '35.

ELIZABETH CALL ALEXANDER

Atlanta, Ga.

MATHEMATICS AND CHEMISTRY

President Senir Class; SILHOUETTE Staff, '35; Cotillion Club, '34, '35; Y. W. C. A. Cabinet, '32, '33, '34; Freshman Sponsor, '34; Bible Club, Secretary, '33; Chemistry Club, '33; Mathematics Club, '32; Riding Team, '32, '33, '34; Class Volley-ball, Manager, '33; Class Swimming Team, '33; Tennis Manager (Class), '32.



## SENIORS

# SILHOUETTE



M. V. ALLEN

M. E. ALLEN

BEHM

## MARY VIRGINIA ALLEN

Clarksville, Va.

FRENCH

AGONISTIC Staff, '32, '33; AURORA Staff, '33, '35; B. O. Z., '34, '35; French Club, '33, '34, '35; German Club, '34, '35; Lecture Association Treasurer, '35; May Day Committee, '33, '34; Phi Alpha Phi, '33, '34, '35; Stunt Committee, '33.

## MARTHA ELIZABETH ALLEN

Monroe, Ga.

LATIN AND MATHEMATICS

American Mathematical Association, '35; Archery Club, '33, '34, '35; Bible Club, '33, '34, '35; French Club, '33, '34, '35; Chi Beta Phi Sigma, '34, '35; Eta Sigma Phi, '33, '34; Treasurer, '35.

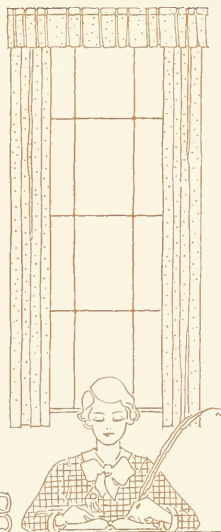
## VELLA MARIE BEHM

Decatur, Ga.

FRENCH

President of Day Students, '35; Student Recorder, '35; President Junior Class, '34; Freshman Sponsor, '34; Y. W. C. A. Cabinet, '34; French Club, '34, '35; Citizenship Club, '34, '35; Stunt Committee, '33; Chemistry Club, '32.

# 1935



# SENIORS

# SILHOUETTE



BELL

BLACKSHEAR

BOGGS

## 1935

DOROTHY LENORE BELL

Decatur, Ga.

ENGLISH

Blackfriars, '35; French Club, '34, '35; Honor Roll, '33, '34.

DOROTHEA BLACKSHEAR

Atlanta, Ga.

HISTORY

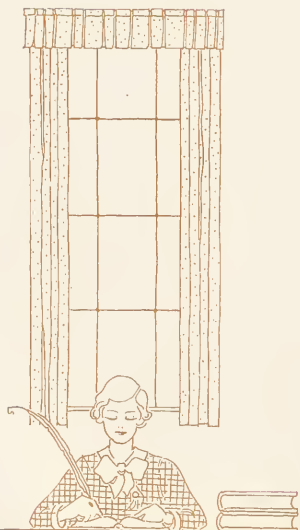
Citizenship Club, '35; Bible Club, '34; Basket-ball Team, '33, '34.

MARY BOGGS

Birmingham, Ala.

FRENCH AND GERMAN

Editor of AGONISTIC, '35; Phi Beta Kappa, '35; Mortor Board, Vice-President, '35; German Club, President, '35; Poetry Club, '32, '33, '34, '35; B. O. Z., '34, '35; Student Government Representative, '32, '33, '34; Honor Roll, '32, '33, '34; Editor Junior AGONISTIC, '34; Editor Sophomore AGONISTIC, '33; French Club, '33, '34; Blackfriars, '32, '33.



## SENIORS



# SILHOUETTE



BURKE

BURNS

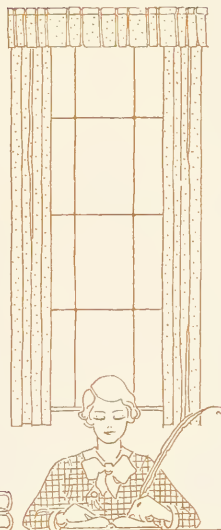
BYERS

ALICE GERTRUDE BURKE  
Atlanta, Ga.  
ENGLISH AND HISTORY

1935

GLADYS PARKER BURNS  
Macon, Ga.  
HISTORY  
Citizenship Club, '34, '35.

VIRGINIA FELDA BYERS  
Atlanta, Ga.  
ENGLISH AND HISTORY  
Blackfriars, '33, '34, '35; Eta Sigma Phi, '33, '34, '35.



SENIORS

# SILHOUETTE



CALHOUN

M. CARMICHAEL

T. CARMICHAEL

## 1935

MARION CALHOUN  
Asheville, N. C.

HISTORY

House-President Agnes Scott Hall, '35; Pi Alpha Phi, '32, '33, (Vice-President), '34, (President), '35; Blackfriars, '34, '35; French Club, '32, '33, '34; German Club, '34; International Relations Club, '34, '35; Junior Hockey Team, '34; Spanish Club, '35.

MARJORIE CARMICHAEL  
Atlanta, Ga.  
PSYCHOLOGY

TRELLIS ELIZABETH CARMICHAEL  
McDonough, Ga.  
FRENCH AND SPANISH

Eta Sigma Phi, '34, '35; Freshman Sponsor, '35; French Club, '33, '34, '35; SILHOUETTE Staff, '34; Spanish Club, '35.



## SENIORS

# SILHOUETTE



CASSELS

CHAMPION

COLE

## VIRGINIA JANE CASSELS

Ellenton, S. C.

PSYCHOLOGY

Bible Club, '34, '35; Freshman Sponsor, '35; Mathematics Club, '32; Spanish Club, '34, '35; South Carolina Club, '32.

## JENNIE CHAMPION

Atlanta, Ga.

ZOOLOGY

Lecture Association, '35; May Day Committee, '35; Chi Beta Phi Sigma, '34, '35; German Club, '34, '35; Granddaughters' Club, '32, '33, '34, '35.

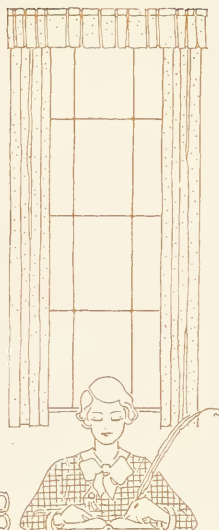
## CAROLYN COLE

Savannah, Ga.

PSYCHOLOGY

Citizenship Club, '33.

# 1935



# SENIORS

# SILHOUETTE



CONSTANTINE

COOK

CRISPIN

## 1935

EVA CONSTANTINE

Savannah, Ga.

LATIN

AGONISTIC Staff, '34, '35; French Club, '35; Eta Sigma Phi, '33, '34, (President), '35; French Club, '35; Hockey Team, '32, '35; Tennis Club, '35; Vice-House President Inman Dormitory, '34.

SARAH COOK

College Park, Ga.

BOTANY

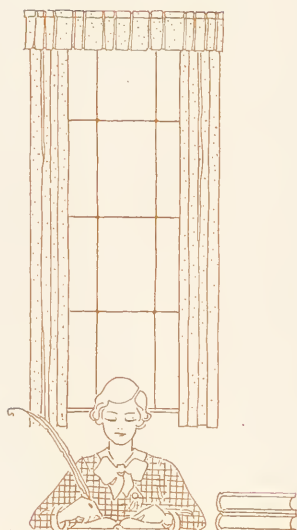
AGONISTIC Reporter, '33, '34, '35; Archery Club, '35; Bible Club, '33; French Club, '32, '33, '34, '35; K. U. B., '33, '34, (Vice-President), '35; May Day Committee, '35; Y. W. C. A. Cabinet, '33, '34; Chi Beta Phi Sigma, '33, '34, (Treasurer), '35.

ROSALYN CRISPIN

Gulfport, Miss.

HISTORY

AGONISTIC Staff, '32, '34, '35; International Relations Club, '34, (President), '35; K. U. B., '33; Pi Alpha Phi, '35.



## SENIORS

# SILHOUETTE



DAVIS

DEASON

DERRICK

SARA GRIFFIN DAVIS  
Atlanta, Ga.  
MATHEMATICS

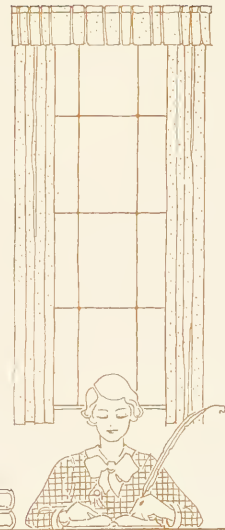
Bible Club, '33; Chemistry Club, '32, '33; Cotillion Club, '35;  
Chi Beta Phi Sigma, '34, '35; Vice-President Day Students, '34.

MARY LILLIAN DEASON  
Lumpkin, Ga.  
CHEMISTRY

Bible Club, '33; Chemistry Club, '32, '33; Chi Beta Phi Sigma,  
'35; German Club, '34, '35; K. U. B., '33, '34, '35; Outing  
Club, '34, '35; Spanish Club, '32, '33, '34, '35.

HELEN DERRICK  
Augusta, Ga.  
ENGLISH

1935



65903 SENIORS

# SILHOUETTE



DICKSON

DIMMOCK

DULS

1935

## CAROLINE DICKSON

Anderson, S. C.

PSYCHOLOGY

Bible Club, '34, '35; Citizenship Club, '35; Freshman Sponsor, '34; Hiking Squad, '33; SILHOUETTE Staff, '33; Vice-President Sophomore Class, '32; Y. W. C. A. Cabinet, '32, '33, (Secretary), '34, (Vice-President), '35.

## HARRIET DIMMOCK

Waycross, Ga.

HISTORY

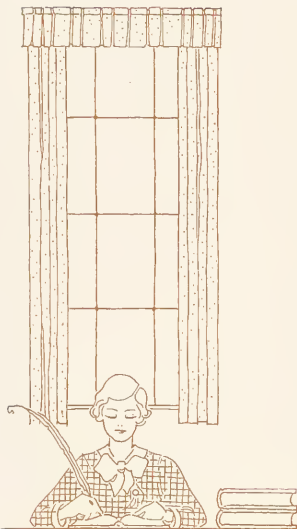
AGONISTIC Staff, '33; Bible Club, '32, '33, '34, '35; Freshman Stunt Committee, '32; Granddaughters' Club, '32, '33, '34, '35; International Relations Club, '35.

## MAE DULS

Charlotte, N. C.

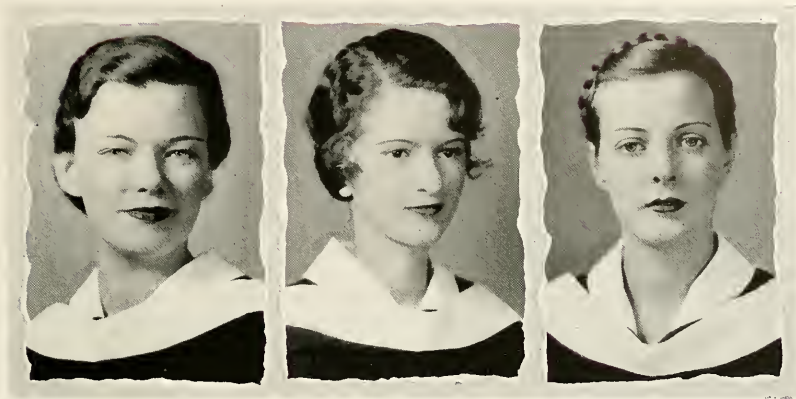
SOCIOLOGY AND PSYCHOLOGY

AGONISTIC Staff, '32; Bible Club, '32, '33, '34, '35; Hockey Team, '32, '34; Y. W. C. A. Cabinet, '34.



SENIORS

# SILHOUETTE



DUNBAR

EDWARDS

ESPY

## 1935

### ALICE DUNBAR

Troy, Ala.  
HISTORY

AGONISTIC Staff, '34, '35; Bible Club, '35; Freshman Sponsor, '34, '35; Pen and Brush Club, '34, '35; Pi Alpha Phi, '34, '35.

### FIDESAH MARGARET EDWARDS

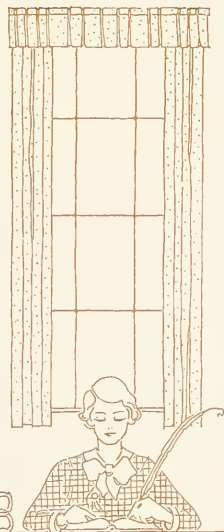
New Orleans, La., and Dallas, Texas  
BIOLOGY AND HISTORY

AGONISTIC Staff, '32, '33, '34, '35; Bible Club, '34; Chemistry Club, '32, '33; Fire Chief, '34; German Club, '32, '33, '34, '35; Hiking Squad, '32, '33, '34; International Relations Club, '34, '35; K. U. B., '32, '33, '34, '35; Mathematics Club, '32; Outing Club, '33, '34; Spanish Club, '32, '33, '34, '35; Swimming Team, '34; Water Polo Team, '33.

### FRANCES KATHRYN ESPY

Dothan, Ala.  
ENGLISH

AGONISTIC Staff, '33, '34, '35; Basket-ball Team, '34; Lecture Association, '34, (President), '35; Poetry Club, '34, (President), '35.



## SENIORS

# SILHOUETTE



EUBANKS

EVANS

FOUNTAIN

## 1935

### WILLIE FLORENCE EUBANKS

Decatur, Ga.

LATIN

Eta Sigma Phi, '34, '35; French Club, '32, '33, '34, '35; Honor Roll, '32, '33, '34.

### MARY JANE EVANS

Fort Valley, Ga.

HISTORY

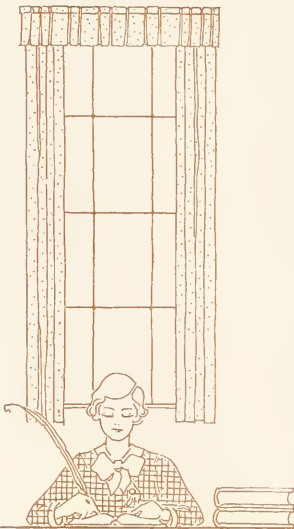
AGONISTIC Staff, '32, '33; House President Inman Hall, '35; Executive Committee, '34, '35; Mortar Board, '35; Bible Club, '33; Blackfriars, '32, '33, '34, '35; Freshman Sponsor, '34; International Relations Club, '33, '34; May Day Committee, '33; Pi Alpha Phi, '32, '33, '34, '35; Vice-President Freshman Class, '32.

### BETTY GRACE FOUNTAIN

Nashville, Tenn.

FRENCH AND HISTORY

Bible Club, '32; Blackfriars, '33, '34, '35; French Club, '32, '33 (Secretary and Treasurer), '34, (President), '35; Freshman Sponsor, '35; Hiking Squad, '33; Honor Roll, '33, '34; International Relations Club, '33, '34, '35; Lecture Association, '33, '34; Pen and Brush Club, '32, '33, '34, (Vice-President), '35; SILHOUETTE Staff, '34, '35; Swimming Team, '33, '34; Water Polo Team, '33, '34.



## SENIORS



# SILHOUETTE



GOINS

GREEN

GRIFFIN

## MARGARET VIRGINIA GOINS

Atlanta, Ga.

MATHEMATICS

Baseball Team, '32, '33; Chemistry Club, '32; Chi Beta Phi Sigma, '33, '34, '35; Hockey Team, '33, '34; Volley Ball Team, '32; Winner Freshman Tennis Tournament (Doubles), '32.

## MARY WARING GREEN

Decatur, Ga.

HISTORY

Mortar Board, '35; Vice-President Student Government, '35; Basket-ball Team, '32, '33, '34; Citizenship Club, '35; Freshman Sponsor, '34; Glee Club, '32, '33, '34; Hockey Team, '33, '34; International Relations Club, '35; May Day Committee, '33; Outing Club, (Vice-President), '34; Pen and Brush Club, '33, '34, '35; Swimming Team, '34; Treasurer Day Students, '33; Treasurer Student Government, '34; Treasurer Freshman Class, '32; Volley-ball Team, '34.

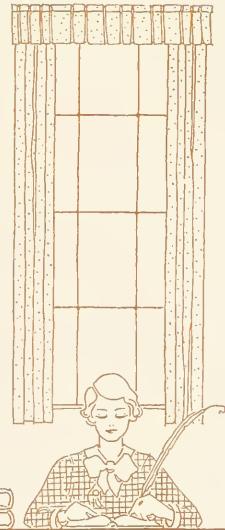
## CAROL HOWE GRIFFIN

East Granby, Conn.

BIOLOGY

Chi Beta Phi Sigma, '34, (Secretary), '35; Citizenship Club, '33; Spanish Club, '33, '34.

1935



SENIORS

# SILHOUETTE



HARMON

HEATON

HERTZKA

1935

ANNE SCOTT HARMON

Atlanta, Ga.

PSYCHOLOGY

Archery Club, '34; Basket-ball Team, '33; Bible Club, '32;  
Citizenship Club, '33; Mathematics Club, '33; Granddaughters'  
Club, '32, '33, '34, '35.

ELIZABETH HEATON

Tallapoosa, Ga.

HISTORY

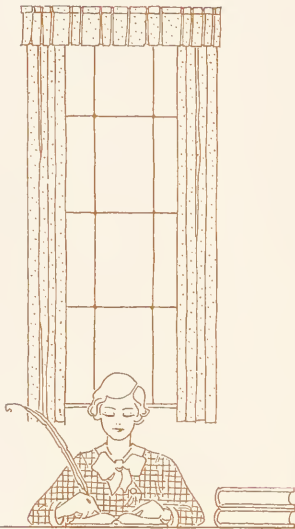
Bible Club, '33; Citizenship Club, '35; International Relations  
Club, '34, '35; Orchestra, '32.

KATHERINE MARGARET HERTZKA

Atlanta, Ga.

CHEMISTRY AND GERMAN

Phi Beta Kappa, '35; Freshmen Sponsor, '34, '35; German  
Club, '34, (Vice-President), '35; K. U. B., '32, '33, '34, '35.



SENIORS

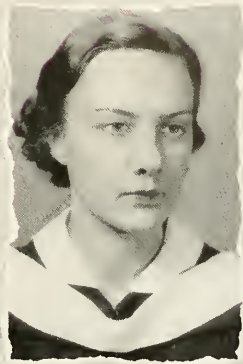
# SILHOUETTE



HOUCK



HUMBER



HUTCHINSON

## BETTY LOU HOUCK

Bradenton, Fla.

SPANISH

Business Manager SILHOUETTE, '35; Assistant Business Manager, '34; SILHOUETTE Staff, '32, '33; Blackfriars, '32, '33, '34, '35; Cotillion Club, '33, '34, '35; Glee Club, '32, '33, '34, '35; "Miss Health," '33; Winner Golf Tournament, '34; Winner of Cup for Best Acting of Year, '34; Sophomore AGONISTIC Staff, '33; Sophomore Manager Mardi Gras, '33; Hockey Team, '32.

## ANNA STALLINGS HUMBER

Clarksdale, Miss.

FRENCH AND ENGLISH

President Mortar Board, '35; Honor Roll, '32, '33, '34; Editor AURORA, '35; AURORA Staff, '34; Chairman Eristics, '35; Blackfriars, '32, '33, '34; B. O. Z., '32, '33, (President), '34, '35; AGONISTIC Staff, '33; French Club, '34, '35; German Club, '34, '35; Freshman AGONISTIC Staff, '32; International Relations Club, '34; K. U. B., '32; May Day Committee, '34; Swimming Team, '33; Water-Polo Team, '33.

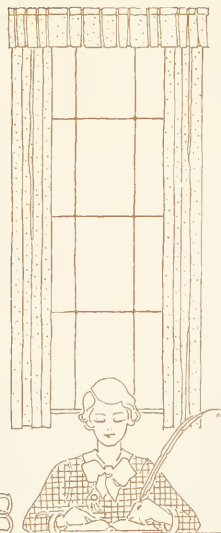
## MARY ELIZABETH HUTCHINSON

Atlanta, Ga.

PSYCHOLOGY

Treasurer Blackfriars, '34, '35; Blackfriars, '32, '33; Chemistry Club, '32; Citizenship Club, '35; Mathematics Club, '32; Spanish Club, '33, '34, '35.

# 1935



# SENIORS

# SILHOUETTE



JENNINGS

LATIMER

LOGAN

1935

JOSEPHINE SIBLEY JENNINGS

Milledgeville, Ga.

HISTORY

AGONISTIC Staff, '35; Cotillion, '34, '35; Freshman Sponsor,  
'35; K. U. B., '35.

MARY LOUISE LATIMER

Decatur, Ga.

HISTORY AND SPANISH

Spanish Club, (Vice-President), '34, (Secretary and Treasurer),  
'35.

MARY PHILLIPS LOGAN

Atlanta, Ga.

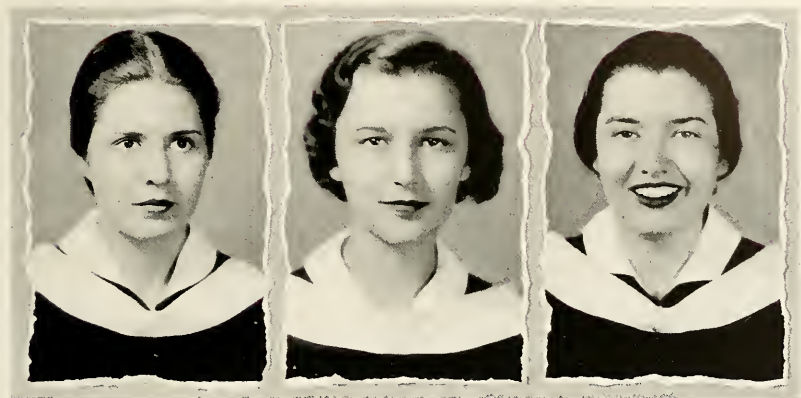
HISTORY

Poetry Club, '34, '35.



SENIORS

# SILHOUETTE



LONG

MORRIS

MORRISON

## CAROLINE LONG

Statesville, N. C.

ZOOLOGY

Editor SILHOUETTE, '35; Assistant Editor SILHOUETTE, '34; SILHOUETTE Staff, '33; Mortar Board, '35; Chi Beta Phi Sigma, '34, '35; Cotillion Club, '34, '35; Bible Club, '33; German Club, '33; Hiking Squad, '32, '33, '34; Hockey Team, '32, '33, '34; Outing Club, '34; Riding Team, '32.

## MARGUERITE MORRIS

Marion, N. C.

GREEK

Blackfriars, '32, '33, '34, '35; Cotillion Club, '33, '34, '35; Eta Sigma Phi, '34, '35; SILHOUETTE Staff, '33, '35; German Club, '34; Bible Club, '34.

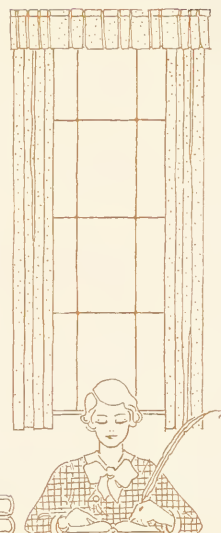
## CLARA MORRISON

Atlanta, Ga.

FRENCH

Honor Roll, '32, '33, '34; Citizenship Club, '35; French Club, '32, '33, '34, '35; Granddaughters' Club, '32, '33, '34, '35; Pi Alpha Phi, '32; German Club, '34, '35.

1935



SENIORS

# SILHOUETTE



McCALLA

McCALLUM

McCLATCHEY

## 1935

FRANCES LUCINDA McCALLA

Little Rock, Ark.

MATHEMATICS AND ZOOLOGY

President Athletic Association, '35; Athletic Association, '33, (Secretary), '34; Mortar Board, (Secretary), '35; Cotillion Club, '33, '34, '35; Executive Committee, '32; Outing Club, (Secretary), '34, '35; Tennis Club, '34, '35.

CAROLYN McCALLUM

Dothan, Ala.

ENGLISH

Executive Committee, '35; AGONISTIC Staff, '33.

JULIA ANDERSON McCLATCHEY

Atlanta, Ga.

FRENCH

French Club, '35; Freshman Sponsor, '35; Industrial Committee, '35; Poetry Club, '34, '35; Y. W. C. A. Cabinet, '35.



## SENIORS

# SILHOUETTE



McCONNELL

McDANIEL

McGAHEE

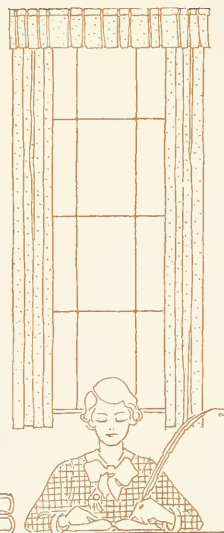
CLARA MITCHELL McCONNELL  
Atlanta, Ga.  
HISTORY

1935

IDA LOIS McDANIEL  
Atlanta, Ga.  
ECONOMICS AND SOCIOLOGY

AGONISTIC Staff, '32, '33, '34, '35; Blackfriars, '34, '35;  
K. U. B., '32, '33, '34, '35; Vice-President Pi Alpha Phi, '35;  
Secretary Pi Alpha Phi, '34; Y. W. C. A. Cabinet, '35.

EMILY McGAHEE  
Columbus, Ga.  
HISTORY  
Cotillion Club, '34, '35.



SENIORS

# SILHOUETTE



NELSON

PALMOUR

PARKE

## 1935

VIRGINIA NELSON

Atlanta, Ga.

CHEMISTRY AND MATHEMATICS

Chi Beta Phi Sigma, '34, '35.

ALBERTA HANSELL PALMOUR

College Park, Ga.

HISTORY

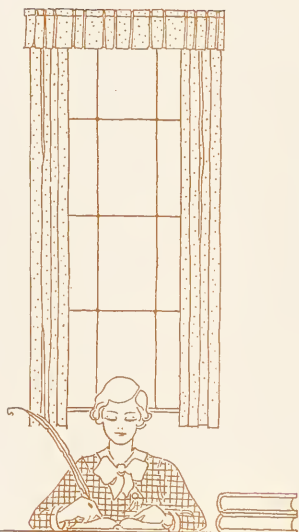
President Student Government, '35; President Sophomore Class, '33; President Freshman Class, '32; Mortar Board, '35; Secretary Student Government, '34; Citizenship Club, '34; Granddaughters' Club, '32, '33, '34, '35; Eta Sigma Phi, '34, '35; Freshman Sponsor, '34; Y. W. C. A. Cabinet, '35; Pi Alpha Phi, '33, '34, '35; Baseball Team, '33; Hiking Squad, '32, '33; Hockey Team, '32, '33, '34, '35; Riding Team, '34; Swimming Team, '34; Water-Polo Team, '32, '33; Volley-ball Team, '32, '33.

NINA WOODS PARKE

Philadelphia, Pa.

ZOOLOGY

President Cotillion Club, '35; Cotillion Club, '32, (Secretary), '33, (Vice-President), '34; SILHOUETTE Staff, '33, '34, '35; Athletic Association, '33, '35; Orchestra, '33, '34, '35; Winner Archery Cup, '34.



## SENIORS



# SILHOUETTE



PATTILLO

POLIAKOFF

PRUET

## NELL TILGHMAN PATTILLO

Decatur, Ga.

FRENCH

Business Manager AGONISTIC, '35; Assistant Business Manager AGONISTIC, '34; AGONISTIC Staff, '33; Mortar Board, '35; President Citizenship Club, '35; French Club, '34, '35; Freshman Sponsor, '34; Lecture Association, '34; Pen and Brush Club, '32, '33, '34; Spanish Club, '32, '33, '34.

## EVA POLIAKOFF

Abbeville, S. C.

HISTORY AND LATIN

Phi Beta Kappa, '35; AGONISTIC Staff, '32, '33, '34; Eristics, '35; Eta Sigma Phi, '33, '34, '35; German Club, '34; Honor Roll, '32, '33, '34; Pi Alpha Phi, '32, '33, '34, '35; International Relations Club, '35; Rich Prize, '32; Baseball Team, '32; Hockey Team, '32, '33, '35.

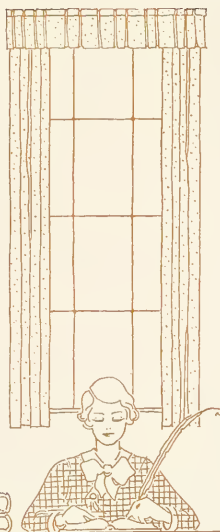
## VERA FRANCES PRUET

Opelika, Ala.

ENGLISH

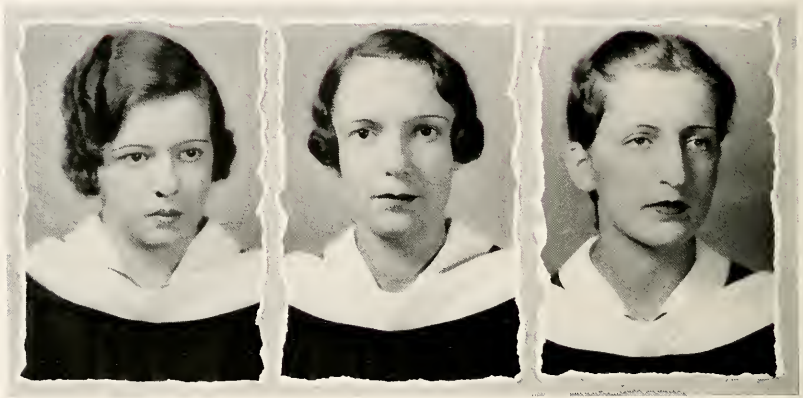
Vice-President Blackfriars, '35; Blackfriars, '32, '34; Freshman Sponsor, '35; Cotillion Club, '35; Lecture Association, '35; K. U. B., '32, '34, '35; Pi Alpha Phi, '32, '34, '35; Y. W. C. A. Cabinet, '32.

# 1935



# SENIORS

# S I L H O U E T T E



PUETT

RACE

REDWINE

## 1935

JULIETTE PUETT

Cumming, Ga.

ENGLISH

Honor Roll, '32, '33; College Chorus, '35; Spanish Club, '32, '33.

MADLINE RACE

Valdosta, Ga.

HISTORY

Cotillion Club, '33, '34, '35; International Relations Club, '35.

MARTHA HENRIETTA REDWINE

Fayetteville, Ga.

ENGLISH

President Y. W. C. A., '35; Y. W. C. A. Cabinet, '32, '34; Mortar Board, '35; President Granddaughters' Club, '35; Granddaughters' Club, '32, '33, '34; Executive Committee, '35; K. U. B., '34; Lecture Association, '33, '34; Pi Alpha Phi, '32, '33, '34, '35; Spanish Club, '34, '35; AGONISTIC Reporter, '32, '33.



## SENIORS

# SILHOUETTE



E. ROBINS

G. ROBINSON

RODGERS

## MARGARET ERWIN ROBINS

Asheboro, N. C.

ENGLISH AND PSYCHOLOGY

AGONISTIC Staff, '35; B. O. Z., '35; German Club, '34, '35;  
Honor Roll, '34; International Relations Club, '33; K. U. B.,  
'33, '34, '35.

## GRACE ROBINSON

Avondale Estates, Ga.

FRENCH

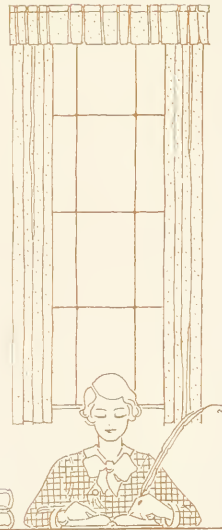
French Club, '34, '35; German Club, '34, '35.

## MARTHA ANN RODGERS

Chattanooga, Tenn.

ENGLISH

# 1935



# SENIORS

# SILHOUETTE



SHIPLEY

SHUTZE

SIMPSON

1935

ISABEL KNOX SHIPLEY  
Greensboro, Ga.  
ENGLISH AND LATIN

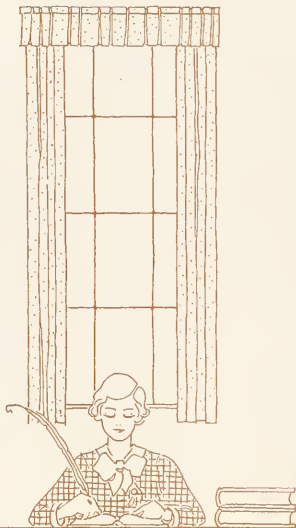
Phi Beta Kappa, '35; Eta Sigma Phi, '33, '34, '35; K. U. B., '33, '34, '35; AGONISTIC Staff, '32, '33, '34, '35; French Club, '34, '35.

ALSINE SHUTZE  
Atlanta, Ga.  
PSYCHOLOGY

Secretary and Treasurer Senior Class, '35; Bible Club, '33, '35; Citizenship Club, '35; Spanish Club, '32; Y. W. C. A. Cabinet, '35.

MARIE SIMPSON  
Decatur, Ga.  
BIBLE

President Bible Club, '35; Bible Club, '34; Secretary Citizenship Club, '35; Athletic Association, '34; Baseball Team, '33; Basket-ball Team, '32, '33; Hockey Team, '33, '34; Pi Alpha Phi, '34, '35; Y. W. C. A. Cabinet, '35.



SENIORS

# S I L H O U E T T E



SIMMS

SMITH

SPENCER

## 1935

SARAH JACKSON SIMMS

Atlanta, Ga.

HISTORY

Bible Club, '34; Citizenship Club, '35.

SUZANNE GALL SMITH

Bramwell, W. Va.

ENGLISH

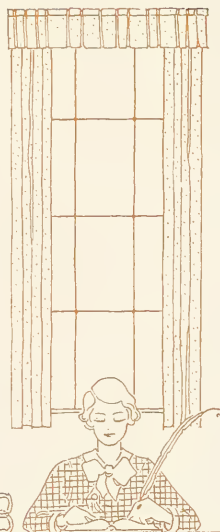
President K. U. B., '35; K. U. B., '33, (Vice-President), '34;  
Bible Club, '33; Chemistry Club, '32; German Club, '34, '35;  
International Relations Club, '33; Lecture Association, '35;  
Spanish Club, '34, '35; Sophomore Stunt Committee, '33.

ETHEL LEONORA SPENCER

Rock Hill, S. C.

ZOOLOGY

Vice-President Athletic Association, '35; Athletic Association,  
'32, '33, (Treasurer), '34; Cotillion Club, '34, '35; A. S. Club,  
'33, '34, '35; Baseball Team, '32, '33; Basket-ball Team, '32,  
'33, '34; Cheer Leader, '33, '34, '35; Freshman Sponsor, '34;  
German Club, '34, '35; Glee Club, '33, '34, '35; Hiking Squad,  
'33, '34; Hockey Team, '32, '33, '34; Outing Club, '34, '35;  
Swimming Team, '34; Varsity Basket-ball, '33, '34; Vice-Presi-  
dent Sophomore Class, '33; Volley-ball Team, '33; Y. W. C.  
A. Cabinet, '32.



## SENIORS

# SILHOUETTE



SQUIRES

STOKEY

SUMMERS

## 1935

MARY ELIZABETH SQUIRES

Greenville, S. C.

LATIN AND GREEK

Bible Club, '35; Eta Sigma Phi, '33, '34, '35; K. U. B., '34, '35;  
Pi Alpha Phi, '32, '33, '34.

MARGARET CLARKE STOKEY

Atlanta, Ga.

FRENCH

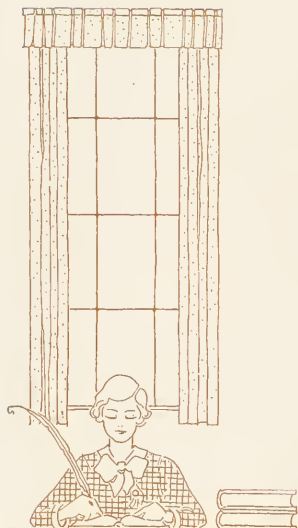
AGONISTIC Staff, '33; Bible Club, '34; Blackfriars, '33, '34,  
'35; Chemistry Club, '32; French Club, '33, '34, '35; German  
Club, '34; K. U. B., '33, '34, '35; Pen and Brush Club, '32, '33,  
'34, '35.

MARY SUMMERS

Atlanta, Ga.

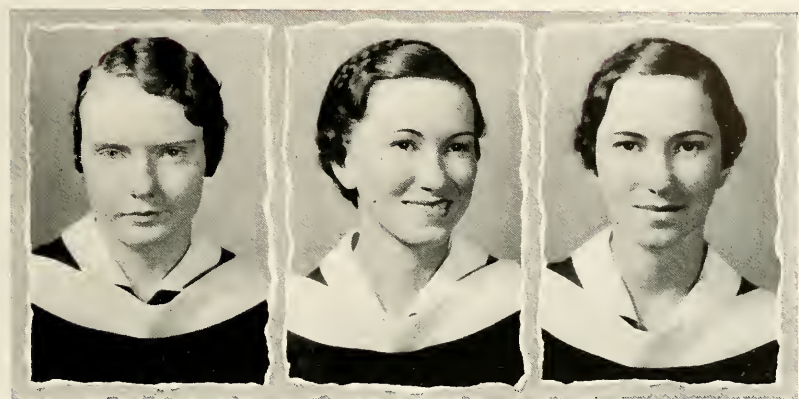
BOTANY

Freshman Sponsor, '35; Chi Beta Phi Sigma, (Vice-President),  
'34, (President), '35; German Club, '34, '35.



## SENIORS

# SILHOUETTE



TARPLEY

Z. THOMPSON

G. THOMPSON

SUSAN NELL TARPLEY

Hampton, Ga.

CHEMISTRY

Bible Club, '35.

MARY ZACHRY THOMPSON

McDonough, Ga.

PSYCHOLOGY

Bible Club, '32; Blackfriars, '35; Glee Club, '34, '35; Secretary  
of Day Students, '33.

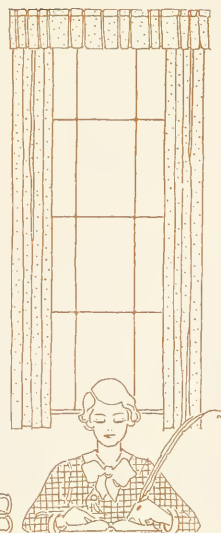
MILDRED GLASS THOMPSON

McDonough, Ga.

PSYCHOLOGY

Bible Club, '32; Blackfriars, '35; Glee Club, '34, '35; Treasurer  
of Day Students, '33.

1935



SENIORS

# SILHOUETTE



THRASHER

TURNER

UNDERWOOD

## 1935

SARAH ELIZABETH THRASHER

Decatur, Ga.

PSYCHOLOGY

AGONISTIC Staff, '34, '35; Bible Club, '33, '34, '35; Citizenship Club, '35; Freshman Sponsor, '35.

SUSAN TURNER

Newnan, Ga.

MATHEMATICS

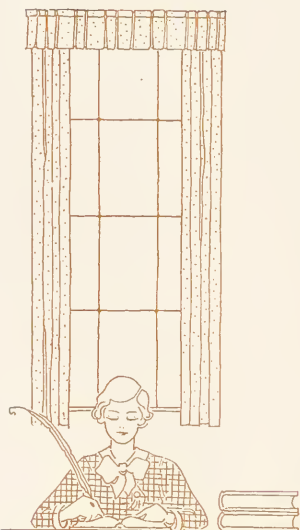
Bible Club, '32, '33, '34, '35; Granddaughters' Club, '32, '33, '34, '35; Mathematics Club, '32, '33; Orchestra, '32, '33.

AMY EUGENIA UNDERWOOD

Decatur, Ga.

LATIN

Student Treasurer, '35; Chemistry Club, '32; Citizenship Club, '35; Eta Sigma Phi, '33, '34, '35; French Club, '34, '35; Freshman Sponsor, '35; Honor Roll, '32, '33; Spanish Club, '35; Treasurer Junior Class, '34.



## SENIORS



# SILHOUETTE



WATERMAN

WHITNER

WITHERS

1935

## MARGARET WATERMAN

Larchmont, N. Y.

MATHEMATICS AND ECONOMICS

AGONISTIC Staff, '32; Bible Club, '32; Chemistry Club, '32; Chi Beta Phi Sigma, '34, '35; Hockey Team, '34; SILHOUETTE Staff, '34; Swimming Team, '32, '33; Tennis Team (Manager), '34, '35; Water-Polo, '32, '33, '34; Y. W. C. A. Cabinet, '34.

## LAURA LOOMIS WHITNER

Atlanta, Ga.

CHEMISTRY

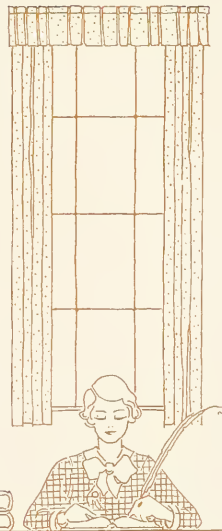
May Queen, '35; Chemistry Club, '33; German Club, '34, '35; Golf Club, '33; Chi Beta Phi Sigma, '34, '35; Freshman Sponsor, '35.

## HESTER ANNE WITHERS

Waynesville, N. C.

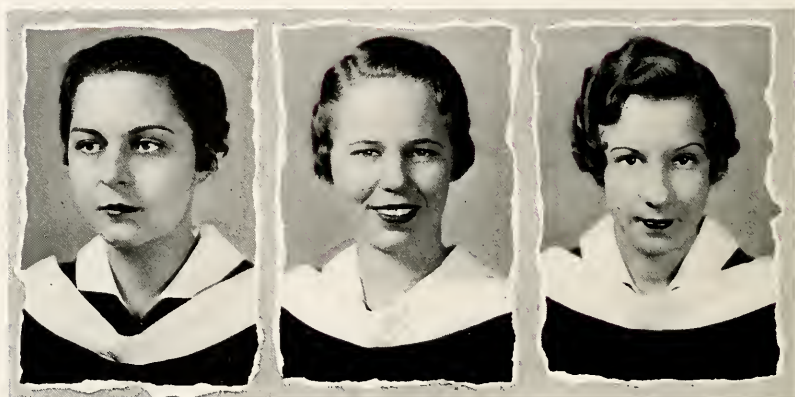
ENGLISH

President Blackfriars, '35; Blackfriars, '33, '34; Cotillion Club, '35; Bible Club, '32, '33; French Club, '34, '35; Freshman Sponsor, '35; Freshman Stunt Committee, '32; International Relations Club, '33, '34; Sophomore Stunt Committee, '33; Y. W. C. A. Cabinet, '33.



SENIORS

# SILHOUETTE



WOOD

WOOLFOLK

YOUNG

## 1935

### VIRGINIA CATHERINE WOOD

Atlanta, Ga.

ECONOMICS

Glee Club, '32, '33, '34, '35; Bible Club, '32; Citizenship Club, '35; French Club, '32, '33.

### JACQUELINE EUGENIA WOOLFOLK

Fort Valley, Ga.

ZOOLOGY

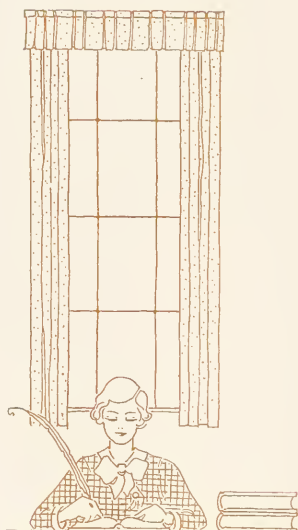
House President Rebekah Scott Hall, '35; AGONISTIC Staff, '34; Baseball Team, '33; Cotillion Club, '35; Hiking Squad, '33; Hockey Team, '33, '34, '35; Volley-ball Team, '34; Water-Polo Team, '33; Y. W. C. A. Cabinet, '32, '34; Secretary and Treasurer Sophomore Class, '33.

### ELIZABETH YOUNG

Atlanta, Ga.

ZOOLOGY

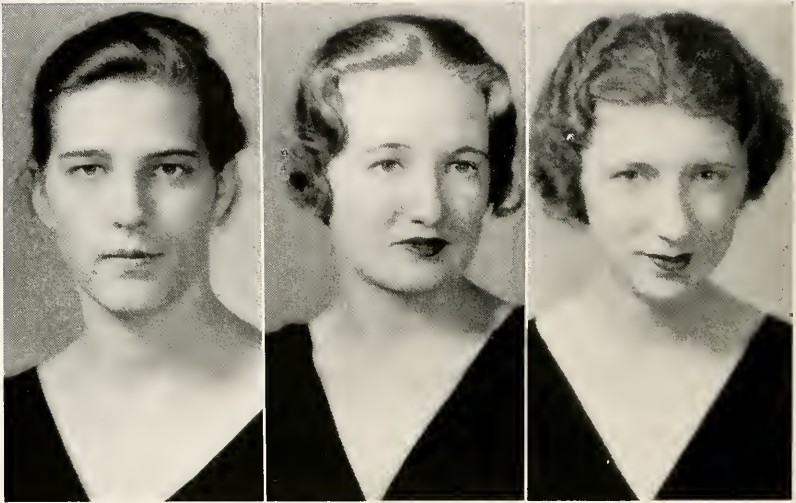
Freshman Sponsor, '35; Chi Beta Phi Sigma, '33, '34, (Corresponding Secretary), '35; Baseball Team, '32, '33; Basketball Team, '32, '33, '34, '35; Bible Club, '33; Hockey Team, '32, '33, '34, '35; Volley-ball Team, '34; Varsity, '34.



## SENIORS



Junior



Left to Right: FORMAN, KING, STOWE

## JUNIOR CLASS OFFICERS

ELIZABETH FORMAN  
President

AUGUSTA KING  
Vice-President

MARY MARGARET STOWE  
Secretary and Treasurer



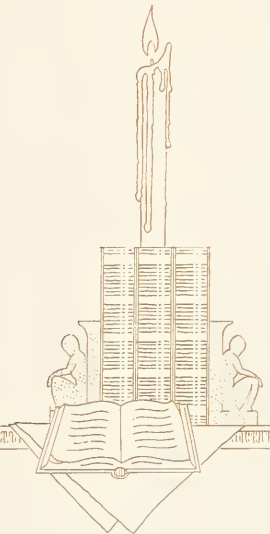
# S I L H O U E T T E



Top Row: AHLES, AMES, ARMSTRONG, BAETHKE, BATES, BEASLEY  
 Bottom Row: BISHOP, BLICK, BROSNAN, BULL, BURSON, CHAMLEE

- ELAINE AHLES . . . . . Atlanta, Ga.  
 LULU AMES . . . . . Decatur, Ga.  
 LENA ARMSTRONG . . . . . Sebring, Fla.  
 ELIZABETH BAETHKE . . . . . Hewanee, Ill.  
 CATHERINE BATES . . . . . Greenville, S. C.  
 MARY BEASLEY . . . . . Columbia, Tenn.  
  
 KATHERINE BISHOP . . . . . Augusta, Ga.  
 JANE BLICK . . . . . Atlanta, Ga.  
 SARAH BROSNAN . . . . . Atlanta, Ga.  
 MERIEL BULL . . . . . Winston-Salem, N. C.  
 ELIZABETH BURSON . . . . . Decatur, Ga.  
 ALICE CHAMLEE . . . . . Canton, Ga.

1936



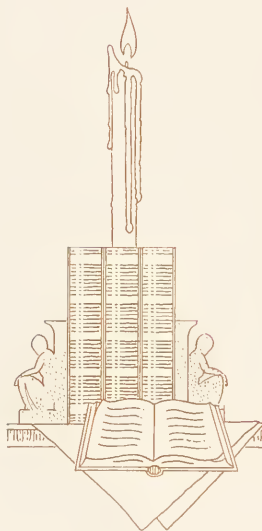
JUNIORS

# SILHOUETTE



Top Row: CHRISTIAN, CLARK, COFFEE, COLEY, COLLIER, COONS  
 Bottom Row: M. COOPER, N. COOPER, CORNELY, CRENSHAW, CUNNINGHAM, CURETON

1936



- SHIRLEY CHRISTIAN . . . . . Chattanooga, Tenn.
- MILDRED CLARK . . . . . Ellenwood, Ga.
- ANN COFFEE . . . . . Decatur, Ga.
- BAZALYN COLEY . . . . . Fairburn, Ga.
- MARY COLLIER . . . . . Atlanta, Ga.
- VIRGINIA COONS . . . . . Atlanta, Ga.
  
- MARGARET COOPER . . . . . State Park, S. C.
- NAOMI COOPER . . . . . Columbus, Ga.
- MARY CORNELY . . . . . Abbeville, S. C.
- MARTHA CRENSHAW . . . . . Huntington, W. Va.
- CATHERINE CUNNINGHAM . . . . . Decatur, Ga.
- SARA CURETON . . . . . Moreland, Ga.

JUNIORS

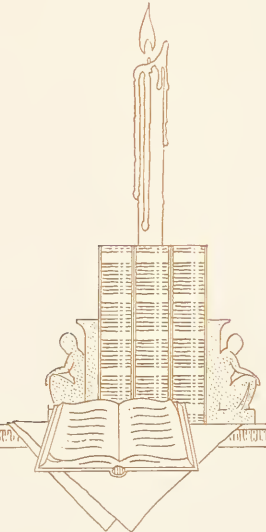
# J I L H O U E T T E



Top Row: DAVIS, DERRICK, ESTES, FORD, FORMAN, FROM  
 Bottom Row: GAINES, GOSS, GRAY, HANDTE, HART, HOFFMAN

- ELLEN DAVIS . . . . . Columbia, S. C.
- MARION DERRICK . . . . . Clayton, Ga.
- SARA FRANCES ESTES . . . . . Gay, Ga.
- HELEN FORD . . . . . Decatur, Ga.
- ELIZABETH FORMAN . . . . . Birmingham, Ala.
- ROSA FROM . . . . . Union, S. C.
  
- VIRGINIA GAINES . . . . . Atlanta, Ga.
- LITA GOSS . . . . . Atlanta, Ga.
- JANET GRAY . . . . . Winston-Salem, N. C.
- HELEN HANDTE . . . . . Sumter, S. C.
- LOIS HART . . . . . Chile, S. A.
- CELIA HOFFMAN . . . . . Atlanta, Ga.

1936



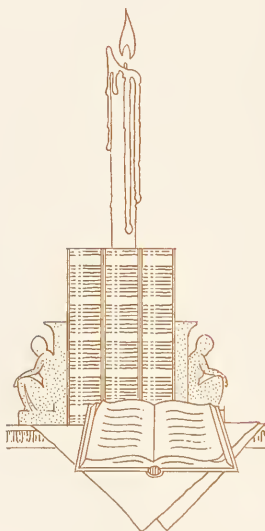
JUNIORS

# S I L H O U E T T E



Top Row: HULL, HUTTON, JAMES, JOHNSON, JOHNSTON, O. S. JONES  
 Bottom Row: S. JONES, JORDAN, KING, LATIMER, LAWRENCE, LEIPOLD

## 1936



- |                                  |                    |
|----------------------------------|--------------------|
| MARY HULL . . . . .              | Augusta, Ga.       |
| RUBY HUTTON . . . . .            | Abingdon, Va.      |
| FRANCES JAMES . . . . .          | Atlanta, Ga.       |
| ETHELYN JOHNSON . . . . .        | Atlanta, Ga.       |
| ELLEN JOHNSTON . . . . .         | Decatur, Ga.       |
| ORIZABA SUSAN JONES . . . . .    | Atlanta, Ga.       |
|                                  |                    |
| SARAH JONES . . . . .            | Canton, Ga.        |
| LOUISE JORDAN . . . . .          | Atlanta, Ga.       |
| AUGUSTA KING . . . . .           | Atlanta, Ga.       |
| CARRIE PHINNEY LATIMER . . . . . | Honeca Path, S. C. |
| SARA AMANDA LAWRENCE . . . . .   | Atlanta, Ga.       |
| KATHRYN LEIPOLD . . . . .        | Augusta, Ga.       |

## JUNIORS



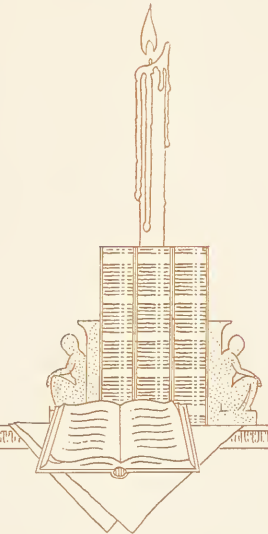
# S I L H O U E T T E



Top Row: LOZIER, LYONS, MARTIN, MERLIN, MILLER, McCALLIE  
 Bottom Row: J. McClURE, L. S. McClURE, McCULLY, McDONALD, McKOIN, McREE

- GERTRUDE LOZIER . . . . . Atlanta, Ga.  
 DOROTHY LYONS . . . . . Cartersville, Ga.  
 ANN MARTIN . . . . . Atlanta, Ga.  
 EDITH MERLIN . . . . . Atlanta, Ga.  
 ROSA MILLER . . . . . Fort Leavenworth, Kan.  
 ALICE McCALLIE . . . . . Chattanooga, Tenn.
- JOSEPHINE McClURE . . . . . St. Petersburg, Fla.  
 LENNA SUE McClURE . . . . . Atlanta, Ga.  
 FRANCES McCULLY . . . . . Sharon, S. C.  
 SARAH FRANCES McDONALD . . . . . Jefferson, Ga.  
 DEAN McKOIN . . . . . Monroe, La.  
 SALLIE McREE . . . . . Trenton, Tenn.

1936



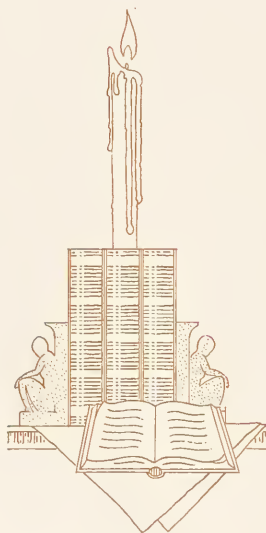
JUNIORS

# S I L H O U E T T E



Top Row: NICHOLS, NORRIS, O'NEAL, PECK, PERRY, RICHARDSON  
 Bottom Row: ROBERTSON, ROWE, SCOTT, SNOW, SPENCER, STEVENS

## 1936



- SARAH NICHOLS . . . . . Atlanta, Ga.  
 JANIE NORRIS . . . . . Atlanta, Ga.  
 MYRA O'NEAL . . . . . Decatur, Ga.  
 HARRIETT PECK . . . . . Atlanta, Ga.  
 MARY PERRY . . . . . Nashville, Ga.  
 MARY RICHARDSON . . . . . Black Mountain, N. C.
- EVELYN ROBERTSON . . . . . Atlanta, Ga.  
 EMILY ROWE . . . . . LaGrange, Ga.  
 LAVINIA SCOTT . . . . . Milledgeville, Ga.  
 MARY SNOW . . . . . Atlanta, Ga.  
 SARAH SPENCER . . . . . Columbia, S. C.  
 ADELAIDE STEVENS . . . . . Forrest City, Ark.

## JUNIORS

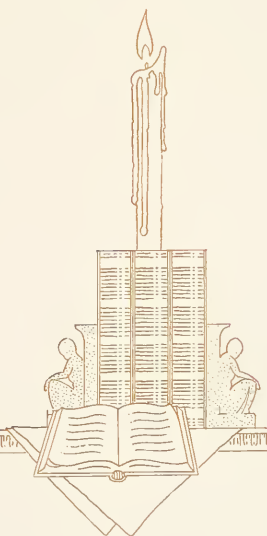
# S I L H O U E T T E



Top Row: STOWE, SUMRALL, SYMMS, TALMAGE, THOMAS, TOMLINSON  
 Bottom Row: TOWNSEND, TURNER, VINES, WAGNER, WALKER, WEBB

- MARY MARGARET STOWE . . . . . Belmont, N. C.  
 WILLIE LOU SUMRALL . . . . . Avondale Estates, Ga.  
 EUGENIA SYMMS . . . . . Augusta, Ga.  
 MARIAM TALMAGE . . . . . Atlanta, Ga.  
 JANE THOMAS . . . . . Atlanta, Ga.  
 SARA TOMLINSON . . . . . Marietta, Ga.
- MARIE TOWNSEND . . . . . Decatur, Ga.  
 SARAH TURNER . . . . . Atlanta, Ga.  
 MARY VINES . . . . . Quincy, Fla.  
 MARIE WAGNER . . . . . Manila, P. I.  
 MARY WALKER . . . . . Atlanta, Ga.  
 JANE ALLEN WEBB . . . . . Lexington, Ky.

1936



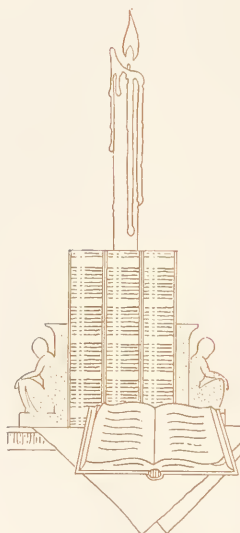
JUNIORS

# S I L H O U E T T E



Top Row: C. WHITE, N. WHITE, WHITEHURST, WHITLEY  
 Bottom Row: WILLIAMS, WILSON, WOOD

1936

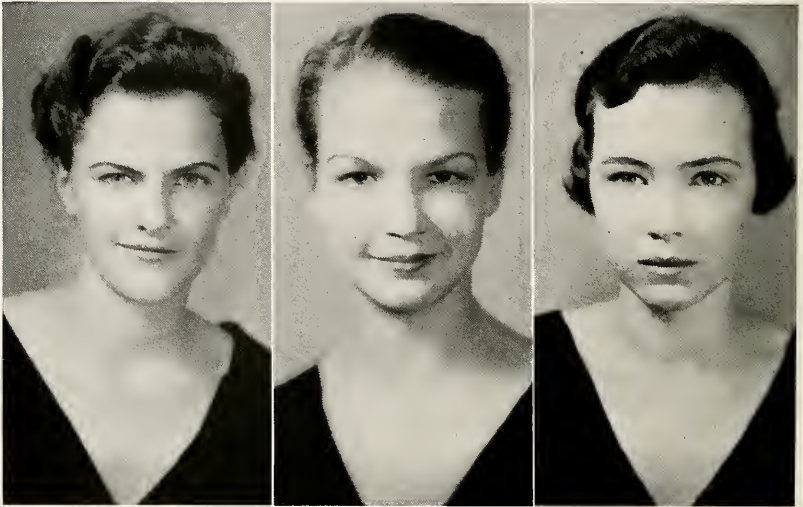


- CAROLYN WHITE . . . . . Augusta, Ga.
- NELL WHITE . . . . . Talladega, Ala.
- LILLIAN WHITEHURST . . . . . Marshall, N. C.
- REBECCA WHITLEY . . . . . Bolton, Ga.
- VIRGINIA WILLIAMS . . . . . Detroit, Mich.
- IRENE WILSON . . . . . Atlanta, Ga.
- SARAH CATHERINE WOOD . . . . . Keyser, W. Va.

JUNIORS



Sophomore



Left to Right: McCAIN, THING, JESTER

## SOPHOMORE CLASS OFFICERS

ISABEL McCAIN  
President

JULIA THING  
Vice-President

DOROTHY JESTER  
Secretary and Treasurer



# S I L H O U E T T E



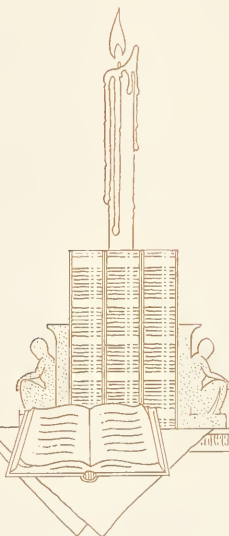
Top Row: ALEXANDER, ALLISON, BALKCOM, BELFORD, BELSER  
 Second Row: BOWEN, BUCHHOLZ, CAIRNS, CARY, CHRISTIE  
 Third Row: CRICKMER, DANIEL, DENNISON, DuPREE, ESTES

ELOISA ALEXANDER . . . . . Atlanta, Ga.  
 ELIZABETH ALLISON . . . . . Auburn, Ala.  
 FRANCES BALKCOM . . . . . Blakely, Ga.  
 FRANCES BELFORD . . . . . Savannah, Ga.  
 EDITH BELSER . . . . . Sumter, S. C.

KATHRYN BOWEN . . . . . Atlanta, Ga.  
 MARY BUCHHOLZ . . . . . Gainesville, Fla.  
 LUCILLE CAIRNS . . . . . Gainesville, Fla.  
 FRANCES CARY . . . . . Greenville, S. C.  
 CORNELIA CHRISTIE . . . . . Decatur, Ga.

MEREDITH CRICKMER . . . . . Holden, W. Va.  
 KATHLEEN DANIEL . . . . . Decatur, Ga.  
 LUCILE DENNISON . . . . . Atlanta, Ga.  
 HELEN DuPREE . . . . . Jacksonville, Fla.  
 JANE ESTES . . . . . Gay, Ga.

1937



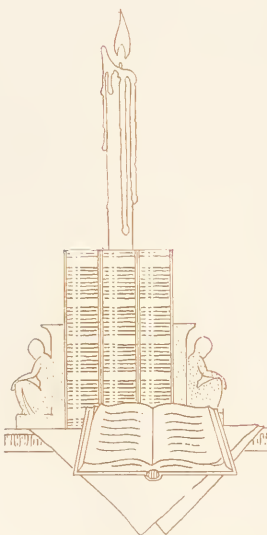
SOPHOMORE

# SILHOUETTE



Top Row: FLEECE, FOWLER, GARLAND, GILLESPIE, GILROY  
 Second Row: HANNAH, HARRIS, HENDERSON, HERTWIG, HOLLAN  
 Third Row: HOLLIS, HUNT, JACKSON, JESTER, JOHNSON

1937



- |                                  |                    |
|----------------------------------|--------------------|
| CHARLINE FLEECE . . . . .        | Atlanta, Ga.       |
| PEGGY FOWLER . . . . .           | Decatur, Ga.       |
| MARY GARLAND . . . . .           | Atlanta, Ga.       |
| MARY GILLESPIE . . . . .         | Atlanta, Ga.       |
| NELLIE MARGARET GILROY . . . . . | Atlanta, Ga.       |
|                                  |                    |
| ALICE HANNAH . . . . .           | Cass, W. Va.       |
| FANNIE B. HARRIS . . . . .       | Rome, Ga.          |
| MARY HENDERSON . . . . .         | Chickamauga, Ga.   |
| BARBARA HERTWIG . . . . .        | North Adams, Mass. |
| EVELYN HOLLAN . . . . .          | Wynne, Ark.        |
|                                  |                    |
| ELIZABETH HOLLIS . . . . .       | Sautee, Ga.        |
| RUTH HUNT . . . . .              | Calhoun, Ga.       |
| BARTON JACKSON . . . . .         | Charlotte, N. C.   |
| DOROTHY JESTER . . . . .         | Lynchburg, Va.     |
| MARTHA JOHNSON . . . . .         | Lithonia, Ga.      |

SOPHOMORE



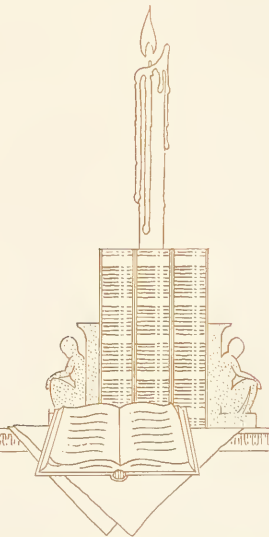
# S I L H O U E T T E



Top Row: M. JOHNSON, S. JOHNSON, C. JONES, K. JONES, M. JONES  
 Second Row: KENNEDY, KIRKPATRICK, KNEALE, LANEY, LASSETER  
 Third Row: LONG, MALONE, J. MATTHEWS, M. C. MATTHEWS, MOORER

- MARY JOHNSON . . . . . Chamblee, Ga.  
 SARAH JOHNSON . . . . . Washington, Ga.  
 CATHERINE JONES . . . . . Ball Ground, Ga.  
 KATHLEEN JONES . . . . . Inverness, Miss.  
 MOLLY JONES . . . . . Decatur, Ga.
- RACHEL KENNEDY . . . . . Newberry, S. C.  
 JEAN KIRKPATRICK . . . . . Anderson, S. C.  
 MARY KNEALE . . . . . Atlanta, Ga.  
 MARTHA SUE LANEY . . . . . Tupelo, Miss.  
 FLORENCE LASSETER . . . . . Fitzgerald, Ga.
- VIVIENNE LONG . . . . . Decatur, Ga.  
 MARY MALONE . . . . . Atlanta, Ga.  
 JUNE MATTHEWS . . . . . Smyrna, Ga.  
 MARY C. MATTHEWS . . . . . Keysville, Ga.  
 NANCY MOORER . . . . . Walterboro, S. C.

1937



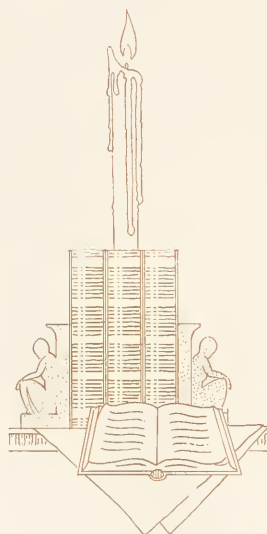
SOPHOMORE

# SILHOUETTE



Top Row: MORROW, MOSS, MUSE, McCAIN, McDONALD  
 Second Row: NEWTON, NORRIS, NORTHCROSS, PARIS, PEACOCK  
 Third Row: PERRIN, PITNER, PRINTUP, RAMSEY, RAYSOR

1937



- MARY ELIZABETH MORROW . . . . . Albemarle, N. C.  
 PAULINE MOSS . . . . . Royston, Ga.  
 ORA MUSE . . . . . Decatur, Ga.  
 ISABEL McCAIN . . . . . Decatur, Ga.  
 FRANCES McDONALD . . . . . Atlanta, Ga.
- MARY ALICE NEWTON . . . . . Dothan, Ala.  
 LOUISE NORRIS . . . . . Wadley, Ga.  
 ROSE NORTHCROSS . . . . . Tupelo, Miss.  
 FRANCES PARIS . . . . . Brunswick, Ga.  
 KATHRYN PEACOCK . . . . . Decatur, Ga.
- ELIZABETH PERRIN . . . . . Spartanburg, S. C.  
 MARY PITNER . . . . . Franklin, Tenn.  
 KATHRYN PRINTUP . . . . . Atlanta, Ga.  
 HELEN RAMSEY . . . . . Darlington, S. C.  
 PEGGY RAYSOR . . . . . St. Matthews, S. C.

SOPHOMORE

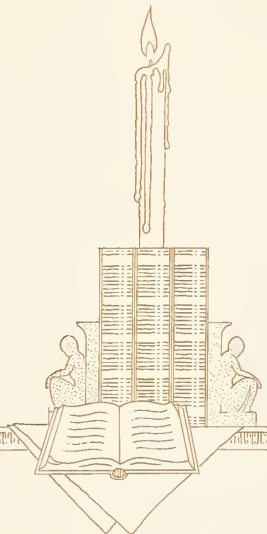
# S I L H O U E T T E



Top Row: RICHARDSON, ROACHE, ROGERS, SAULS, SCOTT  
 Second Row: N. SCOTT, SOUTTER, STALKER, STEELE, STEVENS  
 Third Row: STRICKLAND, SUMMERS, TAYLOR, THING, TIGERT

- ISABEL RICHARDSON . . . . . Washington, Ga.  
 BETTY ROACHE . . . . . Atlanta, Ga.  
 MARY GRAY ROGERS . . . . . Fort Smith, Ark.  
 VIRGINIA SAULS . . . . . Savannah, Ga.  
 MARJORIE SCOTT . . . . . Milledgeville, Ga.
- NELL SCOTT . . . . . Atlanta, Ga.  
 ESTHER SOUTTER . . . . . Atlanta, Ga.  
 MARIE STALKER . . . . . Atlanta, Ga.  
 LAURA STEELE . . . . . Atlanta, Ga.  
 MARY FAIRFAX STEVENS . . . . . Huntsville, Ala.
- ELIZABETH STRICKLAND . . . . . Concord, Ga.  
 MARTHA SUMMERS . . . . . Atlanta, Ga.  
 ALICE TAYLOR . . . . . Alexander, La.  
 JULIA THING . . . . . Asheville, N. C.  
 MARY JANE TIGERT . . . . . Gainesville, Fla.

1937



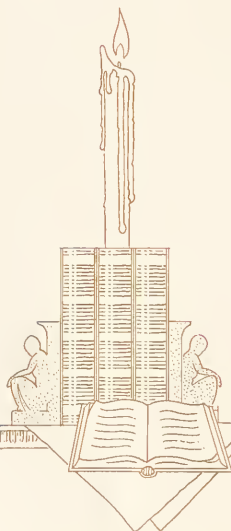
SOPHOMORE

# SILHOUETTE



Top Row: TILLY, TUNTAS, M. TURNER, V. TURNER, VALLEBUONA  
 Second Row: WALKER, WATSON, WEEKS, WILDER, WILHELM  
 Third Row: WILLIAMS, WILLIS, WILSON, YOUNG, CLARK, TERHUNE

1937



MILDRED TILLY . . . . . Decatur, Ga.  
 CHRYSANTHY TUNTAS . . . . . Atlanta, Ga.  
 MEREDITH TURNER . . . . . LaGrange, Ga.  
 VIRGINIA TURNER . . . . . Summerville, Ga.  
 GLADYS VALLEBUONA . . . . . Atlanta, Ga.

ANNIE MERTS WALKER . . . . . Huntsville, Ala.  
 MARGARET WATSON . . . . . Greenwood, S. C.  
 LILY WEEKS . . . . . New Iberia, La.  
 ROSA WILDER . . . . . Sumter, S. C.  
 DOROTHY WILHELM . . . . . St. Petersburg, Fla.

DOROTHY WILLIAMS . . . . . Stone Mountain, Ga.  
 BETTY WILLIS . . . . . Culpepper, Va.  
 FRANCES WILSON . . . . . Rockford, Ill.  
 MARTHA YOUNG . . . . . Coral Gables, Fla.  
 JANE CLARK . . . . . Atlanta, Ga.  
 ELEANOR TERHUNE . . . . . Atlanta, Ga.

SOPHOMORE



Freshman



Left to Right: LONG, PAST

## FRESHMAN CLASS OFFICERS

MARTHA LONG  
President

MARY PAST  
Secretary and Treasurer



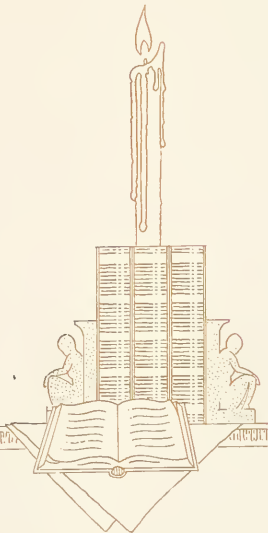
# SILHOUETTE



Top Row: B. ADAMS, J. B. ADAMS, AGEE, ALLEN, ALLISON, ANDERSON  
 Second Row: ANTHONY, ARMISTEAD, J. AUSTIN, N. M. AUSTIN, F. BAKER, M. A. BAKER  
 Third Row: BARNETT, BARRETT, BENNETT, BLACKMON, BOWDEN, BRADLEY

- BETTY ADAMS . . . . . Florence, S. C.  
 JEAN BARRY ADAMS . . . . . Charlotte, N. C.  
 MARTHA AGEE . . . . . Shelbyville, Ky.  
 MARY RICE ALLEN . . . . . Decatur, Ga.  
 NELL ALLISON . . . . . Kiangsu, China  
 BETTY LEE ANDERSON . . . . . Lake Hamilton, Fla.  
 EFFIE OLA ANTHONY . . . . . Henning, Tenn.  
 CAROLINE ARMISTEAD . . . . . Rockingham, N. C.  
 JEAN AUSTIN . . . . . Chattanooga, Tenn.  
 NETTIE MAE AUSTIN . . . . . Dunwoody, Ga.  
 FRANCES BAKER . . . . . Atlanta, Ga.  
 MARY ALICE BAKER . . . . . Bethune, S. C.  
 LUCILE BARNETT . . . . . Sumter, S. C.  
 MARY HELEN BARRETT . . . . . Frankford, Ky.  
 KATHARINE BENNETT . . . . . Molena, Ga.  
 TOMMY RUTH BLACKMON . . . . . Gainesville, Fla.  
 ELIZABETH BOWDEN . . . . . Norfolk, Va.  
 MILDRED BRADLEY . . . . . Atlanta, Ga.

1938



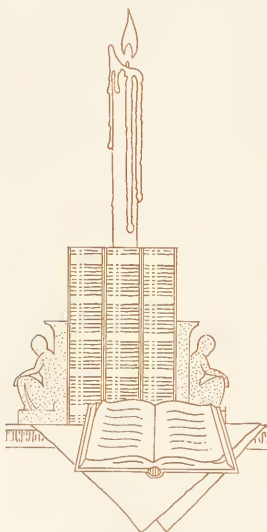
FRESHMEN

# SILHOUETTE



Top Row: BRITTINGHAM, M. P. BROWN, M. F. BROWN, V. H. BROWN, BRYAN, BYRNES  
 Second Row: CABANISS, CALDWELL, CASTLEBERRY, CHAFIN, CHALMERS, COIT  
 Third Row: COX, CULLUM, DAVIS, DUNN, FAIRLY, FAUROT

1938



- KATHERINE BRITTINGHAM . . . . . Portsmouth, Va.  
 MARTHA PEEK BROWN . . . . . Cartersville, Ga.  
 MILDRED FROST BROWN . . . . . Charleston, W. Va.  
 VIRGINIA HILL BROWN . . . . . Thomson, Ga.  
 SUSAN BRYAN . . . . . Reynolds, Ga.  
 ESTHER BYRNES . . . . . Atlanta, Ga.
- DOROTHY CABANISS . . . . . Columbus, Ga.  
 GENE CALDWELL . . . . . Charlotte, N. C.  
 FRANCES CASTLEBERRY . . . . . Atlanta, Ga.  
 MYRL CHAFIN . . . . . McDonough, Ga.  
 JEAN CHALMERS . . . . . Atlanta, Ga.  
 LAURA COIT . . . . . Richmond, Va.
- ETHEL ANN COX . . . . . Atlanta, Ga.  
 ANN CULLUM . . . . . Johnston, S. C.  
 MILDRED DAVIS . . . . . Orlando, Fla.  
 DORIS DUNN . . . . . Decatur, Ga.  
 MARY LILLIAN FAIRLY . . . . . Richmond, Va.  
 NORMA HOPE FAUROT . . . . . Larchmont, N. Y.

FRESHMEN



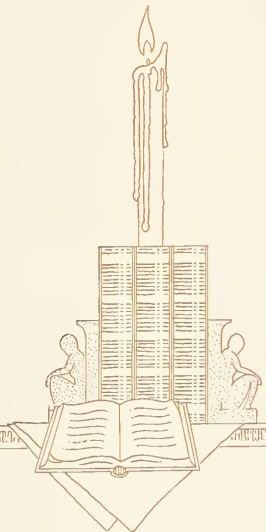
# SILHOUETTE



Top Row: FITZPATRICK, FORD, FOSTER, FULTON, GOSS, GREEN  
 Second Row: HARRISON, HARROLD, HART, HASHAGEN, HAWKINS, HEMPHILL  
 Third Row: HERTZKA, HIGHTOWER, HÖFFMAN, M. E. HOYLE, P. HOYLE, HUDSON

- KATHRYN FITZPATRICK . . . . . Austell, Ga.  
 MARY FORD . . . . . Avondale Estates, Ga.  
 MARTHA FOSTER . . . . . Atlanta, Ga.  
 ANNA KATHERINE FULTON . . . . . Eutaw, Ala.  
 DOROTHY GOSS . . . . . Decatur, Ga.  
 MARTHA ALICE GREEN . . . . . Harlem, Ga.  
 REBECCA HARRISON . . . . . West Point, Ga.  
 MARIAM HARROLD . . . . . Gainesville, Fla.  
 VIRGINIA HART . . . . . Atlanta, Ga.  
 JANE HASHAGEN . . . . . Gastonia, N. C.  
 HELEN HAWKINS . . . . . Leesburg, Fla.  
 NELL HEMPHILL . . . . . Petersburg, Va.  
 RUTH HERTZKA . . . . . Atlanta, Ga.  
 VIRGINIA HIGHTOWER . . . . . Thomaston, Ga.  
 CATHERINE HOFFMAN . . . . . Mount Holly, N. C.  
 MARY ELIZABETH HOYLE . . . . . Cleveland, Tenn.  
 SARA PAULINE HOYLE . . . . . Cleveland, Tenn.  
 MARY McCANN HUDSON . . . . . Greenville, S. C.

1938



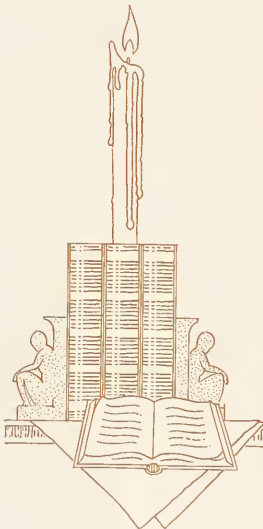
FRESHMEN

# SILHOUETTE



Top Row: HARWITZ, JEFFERS, A. W. JOHNSON, E. JOHNSON, KELLER, KELLERSBERGER  
 Second Row: D. KELLY, O. KELLY, KINNETT, KUHR, LEMMON, LITTLE  
 Third Row: LONG, McAFEE, McCALLIE, McCAMY, McKAY, McKEE

1938



- REGINA HARWITZ . . . . . Atlanta, Ga.  
 JESSIE JEFFERS . . . . . Florence, S. C.  
 ANN WORTHY JOHNSON . . . . . Rome, Ga.  
 ELLENDER JOHNSON . . . . . Atlanta, Ga.  
 MARGARET KELLER . . . . . Staunton, Va.  
 WINIFRED KELLERSBERGER . . . . . Belgian Congo, Africa
- DOROTHY KELLY . . . . . Hendersonville, N. C.  
 OLA KELLY . . . . . Monticello, Ga.  
 FLORENCE KINNETT . . . . . Stone Mountain, Ga.  
 EDA KUHR . . . . . Augusta, Ga.  
 ELEANOR LEMMON . . . . . Sumter, S. C.  
 ELEANOR LITTLE . . . . . Louisville, Ga.
- MARTHA LONG . . . . . Maumee, Ohio  
 MARTHA McAFEE . . . . . Winneconne, Wisc.  
 ELLEN McCALLIE . . . . . Chattanooga, Tenn.  
 WYNUNEE McCAMY . . . . . Middlesboro, Ky.  
 LETTIE McKAY . . . . . Union Springs, Ala.  
 ELIZABETH McKEE . . . . . Cynthia, Ky.

FRESHMEN

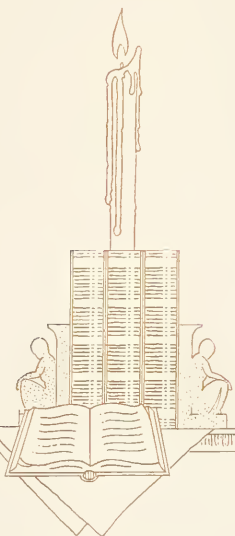
# SILHOUETTE



Top Row: McMURRAY, McWHITE, MATHIS, MATTHEWS, B. MERRILL, J. MERRILL  
 Second Row: MIDDLETON, MILLER, MORELAND, MORRISON, M. P. NOBLE, V. NOBLE  
 Third Row: NORMAN, O'DONNELL, PAST, PHILLIPS, PRICE, RAINEY

- BEAUFORD McMURRAY . . . . . Ocala, Fla.  
 JACQUELYN McWHITE . . . . . Atlanta, Ga.  
 ELIZABETH MATHIS . . . . . Atlanta, Ga.  
 JEANNE MATTHEWS . . . . . Atlanta, Ga.  
 BERTHA MERRILL . . . . . Eufaula, Ala.  
 JANE MERRILL . . . . . Jackson, Miss.  
 ENID MIDDLETON . . . . . Birmingham, Ala.  
 VIRGINIA MILLER . . . . . Washington, D. C.  
 WITA MORELAND . . . . . Woodbury, Ga.  
 MARGARET MORRISON . . . . . Atlanta, Ga.  
 MARY PRIMROSE NOBLE . . . . . Smithfield, N. C.  
 VIRGINIA NOBLE . . . . . Ellenwood, Ga.  
 FRANCES NORMAN . . . . . Gainesville, Fla.  
 ELLEN O'DONNELL . . . . . Atlanta, Ga.  
 MARY ELIZABETH PAST . . . . . Chattanooga, Tenn.  
 CAROLINE PHILLIPS . . . . . San Beuito, Texas  
 HELEN PRICE . . . . . Sweetwater, Tenn.  
 MARJORIE RAINEY . . . . . Decatur, Ga.

1938



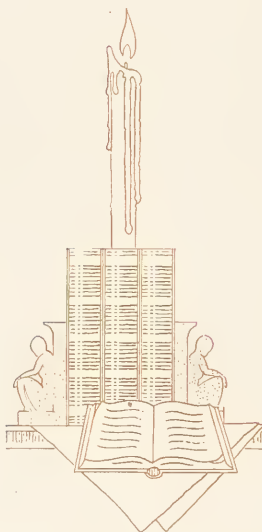
FRESHMEN

# S I L H O U E T T E



Top Row: RICKS, ROBINSON, ROPER, SEAY, SLOAN, SMITH  
 Second Row: F. STEELE, S. STEELE, STIPE, TATE, TAYLOR, TELFORD  
 Third Row: THOMPSON, TRIBBLE, TUCKER, TAYLOR, TURNER, WARDEN

1938



- |                              |                    |
|------------------------------|--------------------|
| CATHERINE RICKS . . . . .    | Jackson, Miss.     |
| FRANCES ROBINSON . . . . .   | Dayton, Tenn.      |
| JOYCE ROPER . . . . .        | Spartanburg, S. C. |
| ELISE SEAY . . . . .         | Macon, Ga.         |
| SARA B. SLOAN . . . . .      | Belmont, N. C.     |
| MARY VENETIA SMITH . . . . . | Columbia, S. C.    |
|                              |                    |
| FRANCES STEELE . . . . .     | Anniston, Ala.     |
| SARA STEELE . . . . .        | Anniston, Ala.     |
| MARY STIPE . . . . .         | Decatur, Ga.       |
| RUTH TATE . . . . .          | Banner Elk, N. C.  |
| ANNE TAYLOR . . . . .        | Mobile, Ala.       |
| JULIA TELFORD . . . . .      | Abbeville, S. C.   |
|                              |                    |
| ANNE THOMPSON . . . . .      | Richmond, Va.      |
| MARY NELL TRIBBLE . . . . .  | Hot Springs, Ark.  |
| DORIS TUCKER . . . . .       | Decatur, Ga.       |
| ALICE JANE TAYLOR . . . . .  | Atlanta, Ga.       |
| JANE TURNER . . . . .        | Atlanta, Ga.       |
| ELIZABETH WARDEN . . . . .   | Decatur, Ga.       |

FRESHMEN

# SILHOUETTE



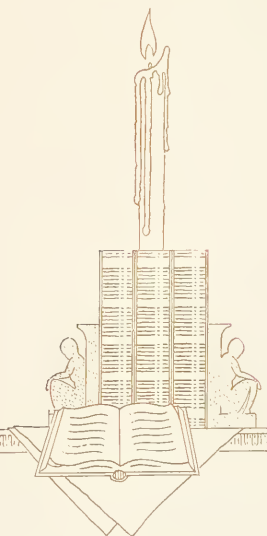
Top Row: WARE, WATSON, WATTS, A. WEBB, E. WEBB, WELLS  
 Second Row: WEST, WHEATON, WHITACER, WHITSON, WISENBAKER, WOODFORD  
 Third Row: WRIGHT, WYATT, FLOYD, HASTIE, YOUNG

EDNA WARE . . . . . Greenville, S. C.  
 ELLA VIRGINIA WATSON . . . . . Greenwood, S. C.  
 MARY ELIZABETH WATTS . . . . . Bryan, Texas  
 ANNA WEBB . . . . . Rogersville, Tenn.  
 ELIZABETH WEBB . . . . . West Point, Ga.  
 ZOE WELLS . . . . . Decatur, Ga.

ELSIE WEST . . . . . Newport News, Va.  
 GEORGIANNE WHEATON . . . . . Savannah, Ga.  
 ANNIE LOU WHITACER . . . . . Tuskegee, Ala.  
 ELEANOR WHITSON . . . . . Atlanta, Ga.  
 GERALDINE WISENBAKER . . . . . Lake Park, Ga.  
 DIXIE WOODFORD . . . . . Toccoa, Ga.

MARGARET WRIGHT . . . . . Chattanooga, Tenn.  
 JANE WYATT . . . . . Easley, S. C.  
 MURIEL FLOYD . . . . . Jellico, Tenn.  
 ANNIE HASTIE . . . . . Stockton, Ala.  
 GERALDINE YOUNG . . . . . Angier, N. C.

1938



FRESHMEN



Top Row: BOOTE, WAID, WALL, JONES  
Second Row: GRIMSON, RODRIQUE, RONNECKE

## SPECIAL STUDENTS

MRS. DOROTHY BOOTE  
Atlanta, Ga.

GLADYS JONES  
Shelbyville, Ky.

FRANCES WAID  
Atlanta, Ga.

LILIAN GRIMSON  
Rosario, R. Argentina

EVELYN WALL  
Brookhaven, Ga.

ELIZABETH RODRIQUE  
Nantes, France

LISELOTTE RONNECKE  
Hannover, Germany



# Features





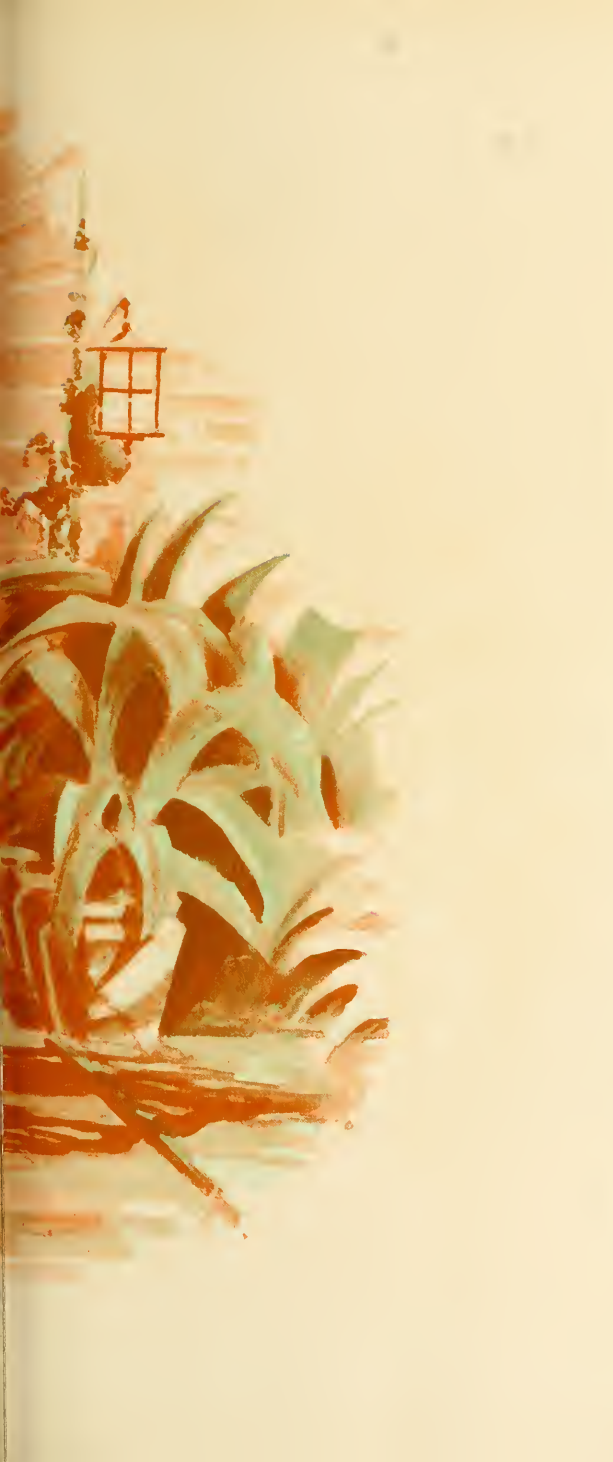
MRS. DOF  
Atla

FRAN  
Atla

EVEL  
Brookl









EARL CARROLL ATTRACTIONS  
SEVEN WEST FORTY-FOURTH STREET  
Vanderbilt 3-5890 NEW YORK CITY

December 19  
19 34

Miss Nina Parke  
The Silhouette  
Agnes Scott College  
Decatur, Georgia

My dear Miss Parke:

I have the pictures which you so kindly sent me to judge, and I am rating the young ladies as follows:

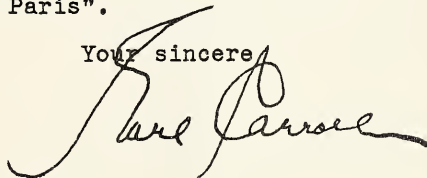
1st Place	Miss Virginia Turner
2nd Place	Miss Marie Wagner
3rd Place	Miss Jane Hashagen

I consider the next five young ladies of equal merit, and find it difficult to give them an individual rating:

Miss Marie Gillispie, Miss Rosa Miller, Miss Pruet, Miss B. L. Houck, Miss Frances Espy.

I hope that all the young ladies, whom I have not included, will forgive me - but please have them remember I have been looking at beauty for so long that the brilliancy of it all is slowly blinding me, and thus my lack of properly exercising the "judgment of Paris".

Your sincere



EC:R

Virginia Linnæus



Marie Wagner



Jane Hachagen





Mary Gillespie



Rosa Miller



*Vera Francis Pruet*



Betty Lou Houck





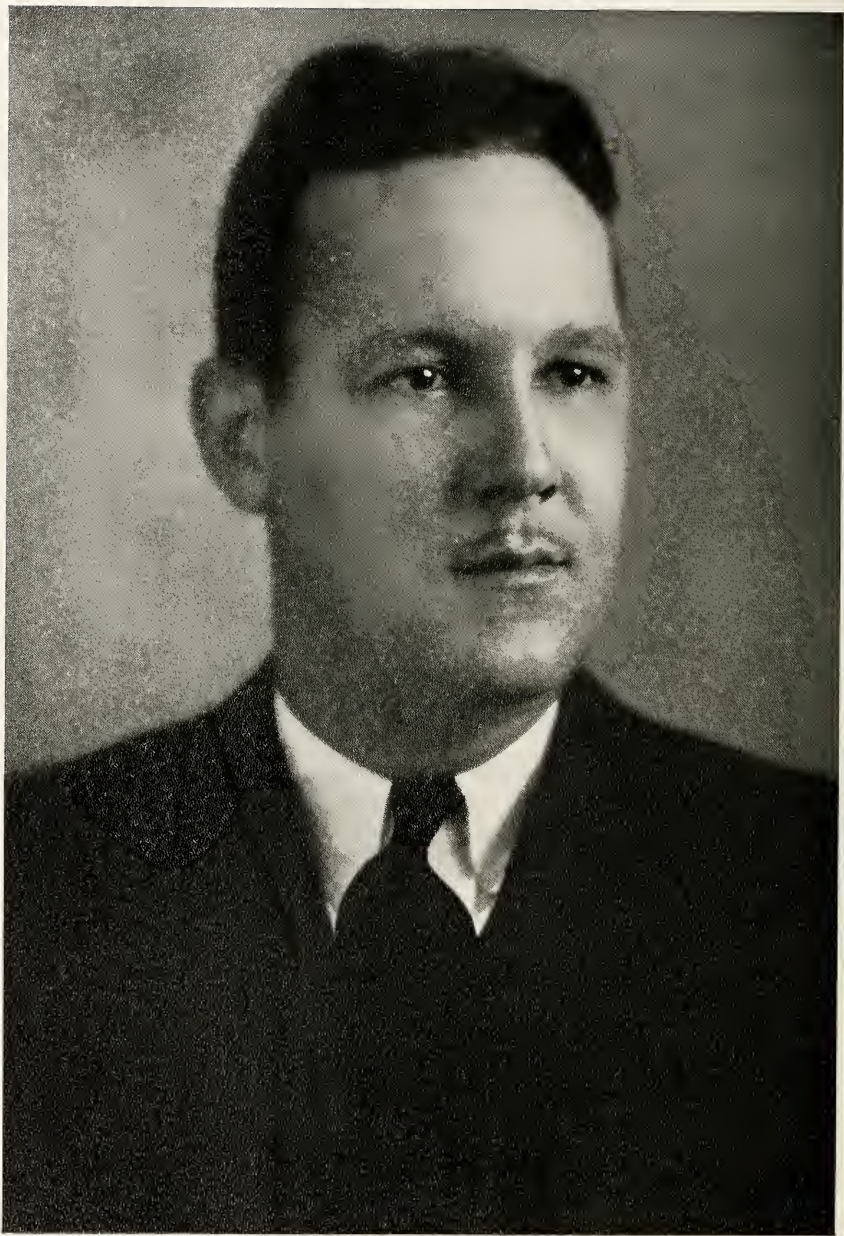
Frances Espy



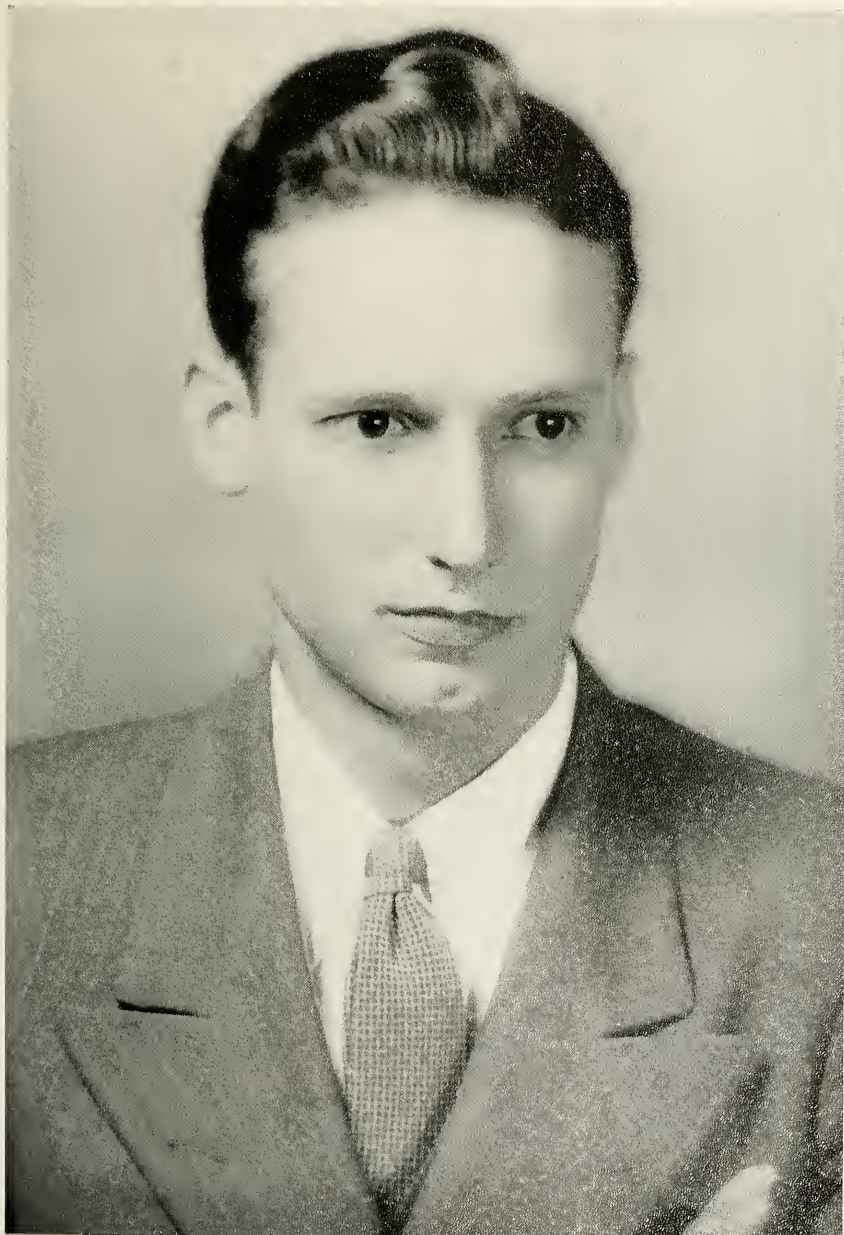




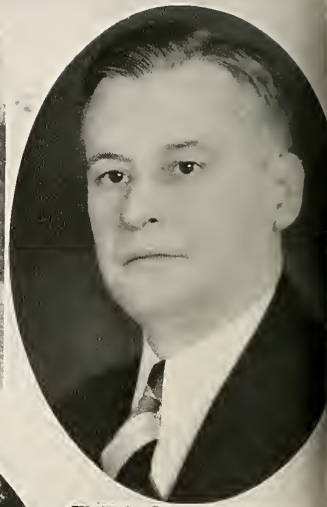
# Favorites



MR. GAITHER SANFORD  
Editor's Favorite



MR. PULASKI LETHBRIDGE SMITH  
Business Manager's Favorite



SOME STAFF FAVORITES

Kodak Editor's Favorite.

No wonder Rosa prefers West Point.

Now we know why Mary G. is such a golf fan.

Faculty editor's favorite.

Sarah thinks there is "safety in numbers!"

Eloisa and Elizabeth have similar tastes.

We must see Janet about this.

Nina's favorite.

Zoe-what?!





SOME SENIOR FAVORITES

Jennie likes the "Good-old-fashioned way."

Be a sport and show him to us, Mary Jane!

There seems no doubt about it to Wallace.

It's a game!

Ask "Mad" if he is "up a stump."

We're just practicing!

"We're the top"—Peg, Pat. Stone Mountain.

What's the matter, Jimmy?

Camp and Charlie, What could be better?

Look who's here again!

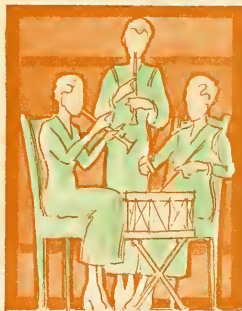
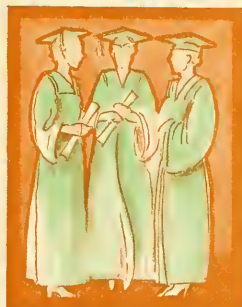
Hold tight "Hutchie."



# Out of Classes











Publications



Top Row: MILLER, GRAY, GAINES, LANEY, ELOISA ALEXANDER, ELIZABETH ALEXANDER  
 Second Row: PARKE, MORRIS, CHRISTIAN, FOUNTAIN, WELLS

## SILHOUETTE

HISTORY: In 1891 The Decatur Female Seminary published the record of the school year in collaboration with the AURORA, the literary publication of the students. In 1902 the present SILHOUETTE was organized.



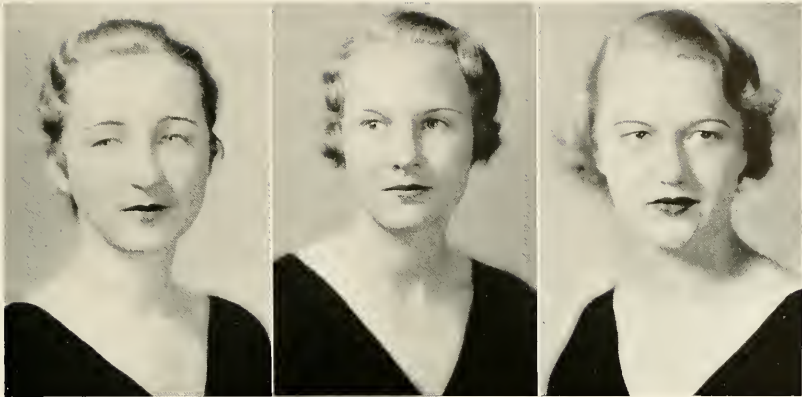
CAROLINE LONG

### EDITORIAL STAFF

- CAROLINE LONG . . . . . Editor-in-Chief  
 ROSA MILLER . . . . . Assistant Editor  
 ELIZABETH ALEXANDER . . . . . Photographic Editor  
 ELOISA ALEXANDER . . . . . Class Editor  
 SHIRLEY CHRISTIAN . . . . . Athletic Editor  
 NINA PARKE . . . . . Feature Editor  
 VIRGINIA GAINES . . . . . Kodak Editor  
 MARGUERITE MORRIS . . . . . Faculty Editor  
 MARTHA SUE LANEY . . . . . Senior Class Editor







DAVIS, GILLESPIE, JONES

## SILHOUETTE

PURPOSE: Years of growth for both college and annual have not altered the purpose of the editorial staffs: To cast upon these pages a silhouette of our life at Agnes Scott—an existence, itself, as transient as firelight shadows.

### BUSINESS STAFF

BETTY LOU HOUCK . . . . . Business Manager

ELLEN DAVIS . . . . . Assistant Business Manager

MARY GILLESPIE

SARAH JONES

### ART STAFF

BETTY FOUNTAIN

ZOE WELLS



BETTY LOU HOUCK





GOSS, ESPY, GILROY, MERLIN

## AURORA

**HISTORY:** The keynote of the AURORA is Development. In the early days it was a year-book, including all phases of activities. When the SILHOUETTE became the annual publication, the AURORA was changed into the organ of the literary societies. Gradually it became a quarterly containing only poetry, short stories, essays and book reviews.



ANNA HUMBER

### EDITORIAL STAFF

- ANNA HUMBER . . . . . Editor-in-Chief
- LITA GOSS . . . . . Assistant Editor
- FRANCES ESPY . . . . . Associate Editor
- NILLIE MARGARET GILROY . . . . . Associate Editor
- EDITH MERLIN . . . . . Associate Editor





ROSA FROM

## AURORA

PURPOSE: To present the highest literary efforts of the students and to create an appreciation of the best writing on the campus.

### BUSINESS STAFF

MARY VIRGINIA ALLEN . . . . . Business Manager

ROSA FROM . . . . . Circulation Manager



MARY VIRGINIA ALLEN





Top Row: AMES, CARY, CRISPIN, ALLISON, STOWE, HERTZKA, CONSTANTINE  
 Second Row: CLARK, TIGERT, ROBINS, PERRIN, CAIRNS, PRINTUP, KING

## AGONISTIC

**HISTORY:** The AGONISTIC was begun by the Junior Class of 1916 and was the private and special interest of that class until the popularity of the paper became so great that the campus adopted it to express their opinions.



MARY BOGGS

### EDITORIAL STAFF

MARY BOGGS . . . . .	Editor-in-Chief
LULU AMES . . . . .	Assistant Editor
FRANCES CARY . . . . .	Second Assistant Editor
ROSALYN CRISPIN . . . . .	Feature Editor
NELL ALLISON . . . . .	Book Notes
MARY MARGARET STOWE . . . . .	Society Editor
RUTH HERTZKA . . . . .	Alumnae Editor
EVA CONSTANTINE . . . . .	Make-up Editor
MILDRED CLARK . . . . .	Assistant Make-up Editor
MARY JANE TIGERT . . . . .	Assistant Make-up Editor
MARGARET ROBINS . . . . .	Current History
ELIZABETH PERRIN . . . . .	Exchange Editor
LUCILLE CAIRNS . . . . .	Exchange Editor
AUGUSTA KING . . . . .	Club Editor





CHAMLEE, THRASHER, BOWEN, STEELE

## AGONISTIC

**PURPOSE:** To present campus news in as accurate and as interesting a manner as possible; to encourage the growth of journalism among the students.

**Year's Work:** A class contest is held each year to stimulate interest in the work and a cup is awarded to the winner.

### BUSINESS STAFF

NELL PATTILLO . . . . . Business Manager

ALICE CHAMLEE . . . . . Advertising Manager

ELIZABETH THRASHER . . . . . Circulation Manager

KATHERYN BOWEN . . . . . Business Assistant

LAURA STEELE . . . . . Business Assistant



NELL PATTILLO





#### BASIS OF AWARD

ORIGINALITY

ART WORK

MAKE-UP

PAGE BALANCING

DEVELOPMENT OF THEME

FINANCING

### The Cup Awarded by Photo-Process Company

The National Scholastic Press Association judges the annuals on the above mentioned points. The SILHOUETTE has won permanent possession of this cup given by the Photo-Process Company awarded in recognition of the All-American rating won by The SILHOUETTE, 1931, 1932, 1933.



### THE SILHOUETTE 1931

SHIRLEY McPAUL . . . . . Editor

MARTHA TOWER . . . . . Business Manager



ELINOR HAMILTON

### THE SILHOUETTE 1932

PENELOPE BROWN . . . . . Editor

BETTY PEEPLES . . . . . Business Manager

### THE SILHOUETTE 1933

CAROLINE LINGLE . . . . . Editor

JULE BETHEA . . . . . Business Manager



PAULINE GORDON

### THE SILHOUETTE 1934

ELINOR HAMILTON . . . . . Editor

PAULINE GORDON . . . . . Business Manager

## In Recognition of the 1934 Silhouette

The staff of the 1935 SILHOUETTE dedicates these pages to Elinor Hamilton and Pauline Gordon in recognition of their splendid work and their high standards which ALL-AMERICAN rating indicates. The SILHOUETTE of 1934 won the highest rating it has received since 1931.



Senior Edition

# The Agonistic

VOL. XX COLLEGE DECATUR, GA. WEDNESDAY FEBRUARY 15, 1933 NO. 13

## FOUR NAMED TO PHI BETA KAPPA

Eight Nominations For May Queen By Student



Miss Torrance Makes Address at Chapel Service

Speech by Dr. C. H. ...

Emory ...

Junior Edition

# The Agonistic

VOL. XX JUNIOR-SOOTH COLLEGE, DECATUR, GA. WEDNESDAY, FEBRUARY 22, 1933 NO. 11

## LAURA WHITNER TO BE MAY QUEEN

Juniors Send Invitations For Banquet March 2



February 22 Week-End Brings Varied Activities

Ask Dr. ...

Dr. McCain Reports

Phi Beta Kappa Initiates Members

Sophomore Edition

# The Agonistic

VOL. XX JUNIOR-SOOTH COLLEGE, DECATUR, GA. WEDNESDAY, FEBRUARY 22, 1933 NO. 15

## Dr. Davidson to Make Address At Inter-Collegiate Convention

Students Government Association Meets At Florida College

Blackfriars Play

Dr. Potat Is W. Speaker For Services

Glee Club to Present Opera, "Pirates of Penzance," In May

A. ...

Blackfriars Play

Blackfriars Play

Founder's Day

Freshman Edition

# The Agonistic

VOL. XX JUNIOR-SOOTH COLLEGE, DECATUR, GA. WEDNESDAY, FEBRUARY 22, 1933 NO. 16

Famous Artist Retires Picture Of Dr. McCain

Freshmen Debate Emory and Tech

Lecturer

Dr. Gen. M. Whitcher Health Contest To End Friday With Decision

Lecture ...

Freshmen Debate



Health Contest

## THE AGONISTIC CONTEST

Won by

THE SOPHOMORE CLASS

Each year, the Agonistic sponsors a contest in which each class publishes an edition of the paper. The winning class is awarded a cup. This year the entries were judged by the editors of The Sundial, Randolph-Macon; The Radcliffe News, Radcliffe College; Vassar Miscellany News, Vassar College; The Emory Wheel, Emory University and the city editor of The Atlanta Constitution. Laura Steele and Kathryn Bowen were presented the cup.







# Organizations



Top Row: GREEN, JAMES, STEVENS, EVANS  
 Second Row: CALHOUN, WOOLFOLK

## STUDENT GOVERNMENT ASSOCIATION

**HISTORY:** In 1906 the Student Government Association was begun contemporaneously with the college's existence, but with a very limited influence. From four officers it has grown into a large executive committee closely associated with every activity on the campus.



ALBERTA PALMOUR

### OFFICERS

- ALBERTA PALMOUR . . . . . President
- MARY GREEN . . . . . Vice-President
- FRANCES JAMES . . . . . Secretary
- ADELAIDE STEVENS . . . . . Treasurer
- MARY JANE EVANS . . . . . House President of Inman
- MARIAN CALHOUN . . . . . House President of Main
- JACQUELINE WOOLFOLK . . . . . House President of Rebekah





Top Row: McCALLUM, McCALLIE, McKOIN, WILSON  
 Second Row: ALLISON, BOWEN, REDWINE

## STUDENT GOVERNMENT ASSOCIATION

### OFFICERS

- CAROLYN McCALLUM . . . . . Senior Representative
- ALICE McCALLIE . . . . . Junior Representative
- DEAN McKOIN . . . . . Junior Representative
- FRANCES WILSON . . . . . Sophomore Representative
- ELIZABETH ALLISON . . . . . Sophomore Representative
- KATHRYN BOWEN . . . . . Day Student Representative
- MARTHA REDWINE . . . . . Ex-Officio Member





Top Row: DICKSON, SPENCER, ARMSTRONG, SIMPSON  
 Second Row: LATIMER, MALONE

## Y. W. C. A.

**HISTORY:** The Y. W. C. A. was organized on the campus the same year that the college was founded, and soon received a charter as a member of the National Y. W. C. A.



MARTHA REDWINE

### OFFICERS

- MARTHA REDWINE . . . . . President
- CAROLINE DICKSON . . . . . Vice-President
- SARAH SPENCER . . . . . Secretary
- LENA ARMSTRONG . . . . . Treasurer
- MARIE SIMPSON . . . . . Social Service Committee
- CARRIE PHINNEY LATIMER . . . . . Program Committee
- MARY MALONE . . . . . Publicity Committee





Top Row: HART, HUTTON, HERTWIG, JOHNSON  
 Second Row: STEVENS, PALMOUR, ADAMS

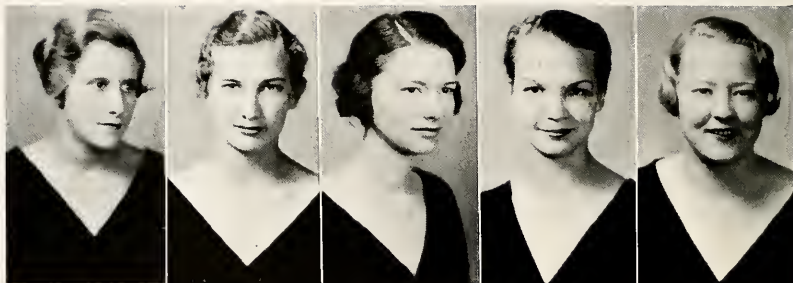
## Y. W. C. A.

PURPOSE: To promote ideals of Christian living in the students which will sustain them in the years to come.

### OFFICERS

- LOIS HART . . . . . Inter-Racial Committee
- RUBY HUTTON . . . . . Social Department
- BARBARA HERTWIG . . . . . Industrial Committee
- SARAH JOHNSON . . . . . Music Committee
- ADELAIDE STEVENS . . . . . Mission Interest Department
- ALBERTA PALMOUR . . . . . Ex-Officio Member
- JEAN BARRY ADAMS . . . . . Freshman Cabinet Chairman





COFFEE, HANDTE, PARKE, THING, McCALLIE

## ATHLETIC ASSOCIATION

HISTORY: The first plans for an Athletic Association were made in 1907 and since that time the organization has grown in importance: It has been effective in providing new sports as well as in seeking more adequate gymnasium equipment. The services of Miss Wilburn and Miss Haynes are indispensable to the Association.



FRANCES McCALLA

### OFFICERS

FRANCES McCALLA . . . . . President  
 LEONORA SPENCER . . . . . Vice-President  
 ANN COFFEE . . . . . Secretary  
 HELEN HANDTE . . . . . Treasurer

### MEMBERS

NINA PARKE . . . . . Social Chairman  
 FRANCES McDONALD . . . . . Publicity Manager  
 HELEN HANDTE . . . . . Lost and Found Manager  
 LEONORA SPENCER . . . . . Song Leader  
 SARAH CATHERINE WOOD . . . . . Camp Manager





WOOD, BURSON, CARY, WALKER, STALKER, McDONALD

## ATHLETIC ASSOCIATION

PURPOSE: The Association arranges an excellent program of athletics to stimulate interest in sports and "play for play's sake."

### MANAGERS OF SPORTS

- ANNE WALKER . . . . . Hockey Manager  
 ELIZABETH BURSON . . . . . Swimming Manager  
 JULIA THING . . . . . Tennis Manager  
 FRANCES CARY . . . . . Hiking Manager  
 LEONORA SPENCER . . . . . Basket-ball Manager  
 SARAH CATHERINE WOOD . . . . . Volley-ball Manager  
 ALICE McCALLIE . . . . . Archery Manager  
 MARIE STALKER . . . . . Soccer Manager



LEONORA SPENCER





BOGGS, EVANS, GREEN, HUMBER, LONG

## MORTAR BOARD

### OFFICERS

ANNA HUMBER . . . . .	President
MARY BOGGS . . . . .	Vice-President
FRANCES McCALLA . . . . .	Secretary
MARY JANE EVANS . . . . .	Treasurer

### MEMBERS

MARY GREEN

CAROLINE LONG







McCALLA, PALMOUR, PATTILLO, REDWINE

## MORTAR BOARD

In 1916 a group of students founded Hoasc, the Agnes Scott honor society, with the purpose to give "recognition to those students who have over a period of three years shown that they possess certain worthy qualities; and the uniting of these students, that they together may render more service."

In October, 1931, Hoasc became a member of Mortar Board, the national honor society for women's colleges. The ideal of Mortar Board is Scholarship, Leadership, and Service.

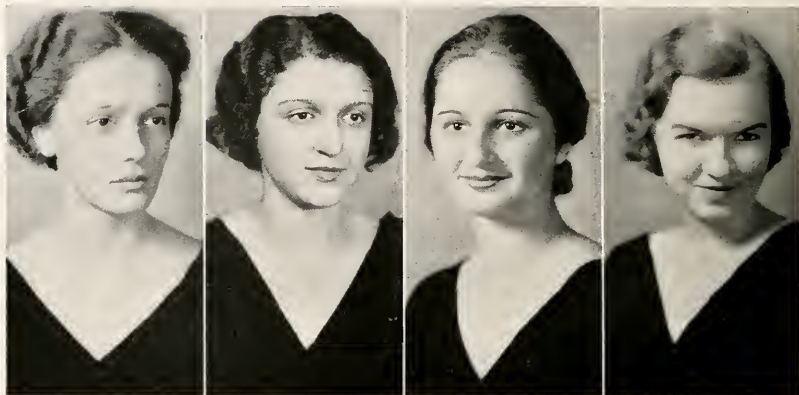
### MEMBERS

ALBERTA PALMOUR

NELL PATTILLO

MARTHA REDWINE





BOGGS, HERTZKA, POLIAKOFF, SHIPLEY

## PHI BETA KAPPA

HISTORY: The Beta Chapter of Georgia of Phi Beta Kappa was installed at Agnes Scott in 1926.

### MEMBERS IN FACULTY

MISS LUCILLE ALEXANDER  
 MR. PHILIP G. DAVIDSON  
 MRS. MARGARET WHITTINGTON DAVIS  
 MISS MURIEL HARN  
 MR. GEORGE P. HAYES  
 MR. ROBERT B. HOLT  
 MISS EMMA MAY LANEY  
 MISS MARY STUART MacDOUGALL  
 MR. JAMES ROSS McCAIN  
 MR. ARTHUR F. RAPER  
 MR. HENRY A. ROBINSON  
 MISS FLORENCE E. SMITH  
 MISS LILLIAN S. SMTH  
 MR. S. GUERRY STUKES  
 MISS CATHERINE TORRANCE  
 MR. JAMES M. WRIGHT



### MEMBERS

MARY BOGGS  
 KATHERINE HERTZKA

EVA POLIAKOFF  
 ISABEL SHIPLEY





Top Row: ALLEN, BELL, BOGGS, EUBANKS, FOUNTAIN, HERTZKA, HUMBER, MORRISON, McCALLA, POLIAKOFF, ROBINS  
 Second Row: ROBINSON, SHIPLEY, CHRISTIAN, FORMAN, GOSS, GRAY, JOHNSON, KING, MERLIN, NICHOLS, SNOW  
 Third Row: WALKER, BOWEN, CARY, DENNISON, HERTWIG, McCAIN, PERRIN, PRINTUP, TILLY, WILSON.

## HONOR ROLL

PURPOSE: To recognize those students who have attained a high scholastic average during the preceding schoolyear. The following are honored for their work in 1933-34:

### CLASS OF 1935

MARTHA ALLEN	ANNA HUMBER
DOROTHY BELL	CLARA MORRISON
MARY BOGGS	FRANCES McCALLA
WILLIE FLORENCE EUBANKS	EVA POLIAKOFF
BETTY FOUNTAIN	MARGARET ROBINS
KATHERINE KERTZKA	GRACE ROBINSON
ISABEL SHIPLEY	

### CLASS OF 1936

SHIRLEY CHRISTIAN	AUGUSTA KING
ELIZABETH FORMAN	EDITH MERLIN
LITA GOSS	SARAH NICHOLS
JANET GRAY	MARY SNOW
ETHELYN JOHNSON	MARY WALKER

### CLASS OF 1937

KATHRYN BOWEN	ISABEL McCAIN
FRANCES CARY	ELIZABETH PERRIN
LUCILE DENNISON	KATHRYN PRINTUP
BARBARA HERTWIG	MILDRED TILLY
FRANCES WILSON	

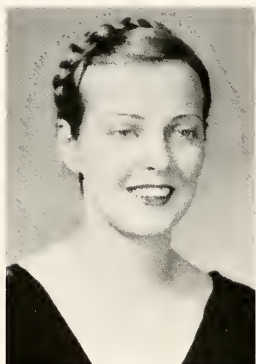




Top Row: ALLEN, THOMAS, PRUET, WHITE  
 Second Row: TIGERT, SPENCER, SMITH

## LECTURE ASSOCIATION

The aim of the Lecture Association is to further intellectual life on the campus by bringing to Agnes Scott men and women who have won distinction in science, literature, history, and public affairs. This year Edna St. Vincent Millay, poet; Dr. C. C. Harrold, archeologist; Dr. Arthur Compton, physicist, and Dr. W. W. Jernegan, historian, were presented.



FRANCES ESPY

### OFFICERS

- FRANCES ESPY . . . . . Student Chairman
- MARY VIRGINIA ALLEN . . . . . Student Treasurer
- VERA FRANCES PRUET . . . . . Senior Representative
- NELL WHITE . . . . . Junior Representative
- MARY JANE TIGERT . . . . . Sophomore Representative
- SARAH SPENCER . . . . . Poster Manager
- SUZANNE SMITH . . . . . Publicity Manager
- JANE THOMAS . . . . . Day Student Representative





Top Row: NICHOLS, KENNEDY, COOK, KIRKPATRICK, STEVENS  
 Second Row: CHAMPION, CHRISTIAN, SNOW, ALEXANDER, BLICK

## MAY DAY COMMITTEE

May Day is always a wonderful climax to the school year. Months of planning make the day an outstanding success. Each fall a contest is held and the best scenario presented is chosen. Late in the spring the May Queen and her court are elected. A large group of the student body take part in May Day, but the day is successful because of the earnest work of this committee.

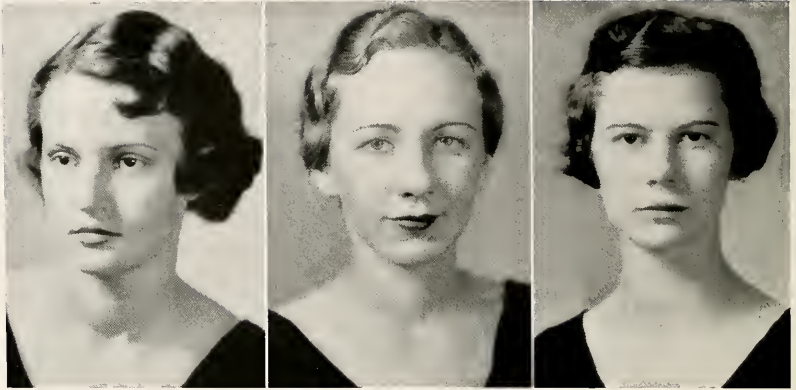
### OFFICERS

CATHERINE CUNNINGHAM	Chairman
JANE BLICK	Business Manager
MARY SNOW	Property Chairman
ELOISA ALEXANDER	Costume Chairman
JEAN KIRKPATRICK	Music Chairman
SHIRLEY CHRISTIAN	Scenario Chairman
ADELAIDE STEVENS	Dance Chairman
JENNIE CHAMPION	Dance Chairman
SARAH COOK	Publicity Chairman
SARAH NICHOLS	Poster Chairman
RACHEL KENNEDY	Poster Chairman



CATHERINE CUNNINGHAM





UNDERWOOD, BEHM, BALKCOM

## STUDENT OFFICIALS

In the spring elections each year, three student officials are chosen, who, though not on the executive committee, are considered officers of the student body.

### OFFICERS

AMY UNDERWOOD . . . . . Student Treasurer

VELLA MARIE BEHM . . . . . Student Recorder

FRANCES BALKCOM . . . . . Fire Chief





Top Row: BEASLEY, CARMICHAEL, CASSELS, M. COOPER, N. COOPER, CUNNINGHAM, CURETON, DUNBAR, ESTES, FOUNTAIN  
 Second Row: GAINES, GRAY, HERTZKA, JENNINGS, JOHNSON, KING, LOZIER, McCLATCHEY, McKOIN, NICHOLS  
 Third Row: PRUET, SNOW, STOWE, THRASHER, THOMAS, TURNER, UNDERWOOD, WHITNER, WITHERS, YOUNG

## SPONSORS

The Sponsors were organized last year to inaugurate a plan of freshman orientation. Each Sponsor has a small number of freshmen to instruct and become acquainted with. The plan was so successful that Student Government used this same method of orientation this year.

### LEADERS

MARY BEASLEY	AUGUSTA KING
TRELLIS CARMICHAEL	GERTRUDE LOZIER
JANE CASSELS	JULE McCLATCHEY
MARGARET COOPER	DEAN McKOIN
NAOMI COOPER	SARAH NICHOLS
CATHERINE CUNNINGHAM	VERA FRANCES PRUET
SARAH CURETON	MARY SNOW
ALICE DUNBAR	MARY MARGARET STOWE
SARAH FRANCES ESTES	JANE THOMAS
BETTY FOUNTAIN	ELIZABETH THRASHER
VIRGINIA GAINES	SARAH TURNER
JANET GRAY	AMY UNDERWOOD
KATHERINE HERTZKA	LAURA WHITNER
JOSEPHINE JENNINGS	HESTER ANNE WITHERS
ETHELYN JOHNSON	ELIZABETH YOUNG



MARY GREEN





Left to Right: A. CHAMLEE, N. CHAMLEE, HUTTON, PARKE, FULTON. McKOIN, JONES, JOHNSON, SMITH

## ORCHESTRA

**HISTORY:** The orchestra which has been organized for several years has become an integral part of the campus life through the Wednesday night dinner music and their entertainment at informal affairs in the gymnasium.

### MEMBERS

RUBY HUTTON . . . . .	Leader
NELLE CHAMLEE . . . . .	Cello
ALICE CHAMLEE . . . . .	Violin
NINA PARKE . . . . .	Violin
ANNA KATHERINE FULTON . . . . .	Violin
DEAN McKOIN . . . . .	Violin
ORIZABA SUSAN JONES . . . . .	Violin
SARAH JOHNSON . . . . .	Mandoline
MISS FLORENCE SMITH . . . . .	Violin







Clubs



Top Row: J. B. ADAMS, M. ADAMS, BATES, CAIRNS, CHAMLEE, CRISPIN, DEASON, EDWARDS, FAIRLY, HERTZKA  
 Second Row: HULL, JACKSON, JENNINGS, KING, McCLURE, McDANIEL, NICHOLS PRUET, RICHARDSON, ROBINS  
 Third Row: ROGERS, ROWE, SHIPLEY, SQUIRES, TOMLINSON, TURNER, VALLEBUONA, WAGNER, WHITEHURST

## K. U. B.

K. U. B., founded in 1920, is now affiliated with the Associated Press. As the journalistic society of Agnes Scott, its purpose is to bring Agnes Scott before the public and to arouse interest in student activities in journalism through contributions to the newspapers.

### OFFICERS

SUZANNE SMITH	President
MARY MARGARET STOWE	First Vice-President
SARAH COOK	Second Vice-President
MARY WALKER	Secretary

### MEMBERS



Top Row: SMITH, STOWE  
 Second Row: COOK, WALKER

JEAN BARRY ADAMS	JOSEPHINE McCLURE
MARY ADAMS	IDA LOIS McDANIEL
CATHERINE BATES	SARAH NICHOLS
LUCILLE CAIRNS	VERA FRANCES PRUET
ALICE CHAMLEE	MARY RICHARDSON
ROSALYN CRISPIN	MARGARET ROBINS
MARY LILLIAN DEASON	MARY GRAY ROGERS
FIDESAH EDWARDS	EMILY ROWE
MARY LILLIAN FAIRLY	ISABEL SHIPLEY
KATHERINE HERTZKA	MARY ELIZABETH SQUIRES
MARY HULL	SARA TOMLINSON
BARTON JACKSON	JANE TURNER
JOSEPHINE JENNINGS	GLADYS VALLEBUONA
AUGUSTA KING	MARIE WAGNER
	LILLIAN WHITEHURST





Top Row: ALLEN, CHAMPION, DAVIS, LONG, MARTIN, NELSON  
 Second Row: NICHOLS, SNOW, WALKER, WATERMAN, WHITNER

## CHI BETA PHI SIGMA

Chi Beta Phi Sigma was organized as the Chemistry Club in 1925 by a group of students interested in a practical knowledge of Chemistry. It became the Alpha Chapter of the national fraternity in 1933. The purpose is to broaden the scope of information beyond that of the classroom.

### OFFICERS

MARY SUMMERS . . . . .	President
ANNE COFFEE . . . . .	Vice-President
CAROL GRIFFIN . . . . .	Recording Secretary
ELIZABETH YOUNG . . . . .	Corresponding Secretary
SARAH COOK . . . . .	Treasurer

### MEMBERS

- MARTHA ALLEN
- JENNIE CHAMPION
- SARA DAVIS
- CAROLINE LONG
- ANN MARTIN
- VIRGINIA NELSON
- SARAH NICHOLS
- MARY SNOW
- MARY WALKER
- MARGARET WATERMAN
- LAURA WHITNER



Top Row: SUMMERS, COFFEE, GRIFFIN  
 Second Row: YOUNG, COOK





Top Row: BEASLEY, BELL, BYERS, CALHOUN, CHRISTIAN, DENNISON, DERRICK, EVANS, FLEECE  
 Second Row: FOUNTAIN, HOUCK, JAMES, KING, LANEY, LATIMER, McCALLIE, McDANIEL, MORRIS  
 Third Row: MILLER, PRINTUP, STALKER, STEELE, STOKEY, MARY THOMPSON, M. THOMPSON, TURNER, WHITE

## BLACKFRIARS

Blackfriars, the oldest club on the campus, was organized in 1915 under the direction of Miss Gooch, who has guided them to adequate plays, careful and sincere acting, giving those girls who are interested in dramatics an opportunity to study and act.

### OFFICERS

HESTER ANNE WITHERS . . . . .	President
VERA FRANCES PRUET . . . . .	Vice-President
KATHERYN BOWEN . . . . .	Secretary
MARY HUTCHINSON . . . . .	Treasurer

### MEMBERS



Top Row: WITHERS, PRUET  
 Second Row: BOWEN, HUTCHINSON

- |                   |                        |
|-------------------|------------------------|
| MARY BEASLEY      | MARTHA SUE LANEY       |
| DOROTHY BELL      | CARRIE PHINNEY LATIMER |
| VIRGINIA BYERS    | ALICE McCALLIE         |
| MARIAN CALHOUN    | IDA LOIS McDANIEL      |
| SHIRLEY CHRISTIAN | MARGUERITE MORRIS      |
| LUCILE DENNISON   | ROSA MILLER            |
| MARIAN DERRICK    | KATHRYN PRINTUP        |
| MARY JANE EVANS   | MARIE STALKER          |
| CHARLENE FLEECE   | FRANCES STEELE         |
| BETTY FOUNTAIN    | MARGARET STOKEY        |
| BETTY LOU HOUCK   | MARY THOMPSON          |
| FRANCES JAMES     | MILDRED THOMPSON       |
| AUGUSTA KING      | VIRGINIA TURNER        |

NELL WHITE





Top Row: ADAMS, BEHM, BLACKSHEAR, CURETON, DAVIS, DERRICK, DICKSON  
 Second Row: FROM, GREEN, HEATON, HOFFMAN, LAWRENCE, MORRISON, NICHOLS  
 Third Row: ROACHE, ROWE, SHUTZE, THRASHER, TOWNSEND

## CITIZENSHIP CLUB

The Citizenship Club, organized in 1926, became a part of the League of Women Voters in 1929. Its purpose is to familiarize the student body with the principles of voting and current politics so they will become intelligent, well-qualified voters.

### OFFICERS

NELL PATILLO . . . . . President  
 MARIE TOWNSEND . . . . . Vice-President  
 MARIE SIMPSON . . . . . Secretary-Treasurer

### MEMBERS

MARY ADAMS  
 VELLA MARIE BEHM  
 DOROTHEA BLACKSHEAR  
 SARAH CURETON  
 ELLEN DAVIS  
 MARIAN DERRICK  
 CAROLINE DICKSON  
 ROSA FROM  
 MARY GREEN  
 ELIZABETH HEATON  
 CELIA HOFFMAN  
 SARA LAWRENCE  
 CLARA MORRISON  
 SARAH NICHOLS  
 BETTY ROACHE  
 EMILY ROWE  
 ALSINE SHUTZE  
 ELIZABETH THRASHER  
 MARIE TOWNSEND



Top Row: PATILLO, TOWNSEND  
 Second Row: SIMPSON





Top Row: BAKER, DUNBAR, GREEN, M. JOHNSON, E. JOHNSON, McCULLY, MALONE  
 Second Row: SCOTT, TAYLOR, THING, WEEKS, WHITAKER, WRIGHT, WYATT

## PEN AND BRUSH CLUB

Pen and Brush was organized in 1926 by the art students for the purpose of creating a more active interest in art and of stimulating the talent of the members.

### OFFICERS

SARAH SPENCER . . . . . President  
 BETTY FOUNTAIN . . . . . Vice-President  
 VIRGINIA GAINES . . . . . Secretary-Treasurer



Top Row: SPENCER, FOUNTAIN  
 Second Row: GAINES

### MEMBERS

FRANCES BAKER  
 ALICE DUNBAR  
 MARY GREEN  
 MARTHA JOHNSON  
 ELLENDER JOHNSON  
 FRANCES McCULLY  
 MARY MALONE  
 MARJORIE SCOTT  
 ANNE TAYLOR  
 JULIA THING  
 LILLY WEEKS  
 ANNIE LOU WHITAKER  
 MARGARET WRIGHT  
 JANE WYATT





Top Row: BATES, BYERS, COLEY, CARMICHAEL, CLARK, EUBANKS, GOSS, LYONS  
 Second Row: MORRIS, NORRIS, PALMOUR, POLIAKOFF, SHIPLEY, SQUIRES, UNDERWOOD



## ETA SIGMA PHI

The Alpha Delta Chapter of Eta Sigma Phi was installed at Agnes Scott for students of Greek and Latin among the upperclassmen. Its purpose is to cultivate a greater appreciation of the classics and ancient culture.

### OFFICERS

EVA CONSTANTINE . . . . .	President
ELIZABETH FORMAN . . . . .	Vice-President
GERTRUDE LOZIER . . . . .	Secretary
MARTHA ALLEN . . . . .	Treasurer

### MEMBERS

- CATHERINE BATES
- VIRGINIA BYERS
- BAZALYN COLEY
- TRELLIS CARMICHAEL
- MILDRED CLARK
- WILLIE FLORENCE EUBANKS
- LITA GOSS
- DOROTHY LYONS
- MARGUERITE MORRIS
- JANIE NORRIS
- ALBERTA PALMOUR
- EVA POLIAKOFF
- ISABEL SHIPLEY
- MARY ELIZABETH SQUIRES
- AMY UNDERWOOD



Top Row: CONSTANTINE, FORMAN  
 Second Row: LOZIER, ALLEN





Top Row: M. ALLEN, M. V. ALLEN, ALLISON, BEHM, BELL, BULL, CARMICHAEL, CARY, CLARK, COFFEE, CONSTANTINE, COOK  
 Second Row: COOPER, EUBANKS, GRAY, HANDT, HUTTON, JOHNSON, LYONS, McCLATCHEY, McKOIN, MORRISON  
 Third Row: PATTILLO, PERRIN, PRINTUP, ROBINSON, SHIPLEY, SPENCER, STEVENS, STOKEY  
 Fourth Row: SUMMERS, THOMAS, J. TURNER, S. TURNER, WAGNER, WALKER, WITHERS

## FRENCH CLUB

In 1920 the French Club was organized as a social and intellectual society to provide the students with opportunities of using conversational French. Plays, meetings with the Alliance Francaise of Atlanta and a French Cinema have been parts of the programs for this year.

### OFFICERS

BETTY FOUNTAIN	.....	President
AUGUSTA KING	.....	Vice-President
JULIA THING	.....	Secretary-Treasurer

### MEMBERS



Top Row: FOUNTAIN, KING  
 Second Row: THING

MARTHA ALLEN	DOROTHY LYONS
MARY VIRGINIA ALLEN	JULE McCLATCHEY
NELL ALLISON	DEAN McKOIN
VELLA MARIE BEHM	CLARA MORRISON
DOROTHY BELL	NELL PATTILLO
MERIEL BULL	ELIZABETH PERRIN
TRELLIS CARMICHAEL	KATHRYN PRINTUP
FRANCES CARY	GRACE ROBINSON
MILDRED CLARK	ISABEL SHIPLEY
ANNE COFFEE	SARAH SPENCER
EVA CONSTANTINE	FAIRFAX STEVENS
SARAH COOK	MARGARET STOKEY
NAOMI COOPER	MARTHA SUMMERS
WILLIE FLORENCE EUBANKS	JANE THOMAS
JANET GRAY	JANE TURNER
HELEN HANDTE	SARAH TURNER
RUBY HUTTON	MARIE WAGNER
ETHELYN JOHNSON	ANNE WALKER
	HESTER ANNE WITHERS







Top Row: ALEXANDER, BISHOP, BROSNAN, CABANISS, COONS, E. DAVIS, S. DAVIS, DERRICK, HIGHTOWER, HOUCK, HULL  
 Second Row: JENNINGS, JONES, LONG, McCALLA, McGAHEE, MILLER, MORELAND, MORRIS, PRUET, RACE, SCOTT  
 Third Row: SMITH, SPENCER, STRICKLAND, THING, TURNER, TUNTAS, WHITNER, WITHERS, WOOLFOLK

## COTILLION CLUB

The Cotillion Club, organized in 1921, is the only strictly social club on the campus. Its purpose is to uphold the highest social standards through the annual Thanksgiving and Founders Day dances and the regular tea-dances for the members.

### OFFICERS

NINA PARKE . . . . . President  
 NELL WHITE . . . . . Vice-President  
 AUGUSTA KING . . . . . Secretary-Treasurer

### MEMBERS

ELIZABETH ALEXANDER	EMILY McGAHEE
KATHERINE BISHOP	ROSA MILLER
SARAH BROSNAN	WITA MORELAND
DOROTHY CABANISS	MARGUERITE MORRIS
VIRGINIA COONS	VERA FRANCES PRUET
ELLEN DAVIS	MADELINE RACE
SARA DAVIS	LAVINIA SCOTT
MARIAN DERRICK	MARY VENETIA SMITH
VIRGINIA HIGHTOWER	LEONORA SPENCER
BETTY LOU HOUCK	ELIZABETH STRICKLAND
MARY HULL	MEREDITH TURNER
JOSEPHINE JENNINGS	CHRYSANTHY TUNTAS
SARAH JONES	LAURA WHITNER
CAROLINE LONG	HESTER ANNE WITHERS
FRANCES McCALLA	JACQUELINE WOOLFOLK



Top Row: PARKE, WHITE  
 Second Row: KING





Top Row: ALLEN, BALKCOM, BELFORD, CRISPIN, DENNISON, DUNBAR, GILROY  
 Second Row: HANDTE, HARRIS, JAMES, LEE, McCAIN, PALMOUR, POLIAKOFF  
 Third Row: PRINTUP, PRUET, REDWINE, SIMPSON, SQUIRES, STALKER, TOWNSEND

## PI ALPHA PHI

Pi Alpha Phi, the honorary debating society, was organized in 1920 to encourage debating between the students at Agnes Scott as well as intercollegiate debating. The triangular debates and the debate with the University of London were interesting features of the year's work.

### OFFICERS

MARIAN CALHOUN . . . . .	President
IDA LOIS McDANIEL . . . . .	Vice-President
SARAH CATHERINE WOOD . . . . .	Secretary
CARRIE PHINNEY LATIMER . . . . .	Treasurer

### MEMBERS



Top Row: CALHOUN, McDANIEL  
 Second Row: WOOD, LATIMER

- |                        |                        |
|------------------------|------------------------|
| MARY VIRGINIA ALLEN    | DOROTHY LEE            |
| FRANCES BALKCOM        | ISABEL McCAIN          |
| FRANCES BELFORD        | ALBERTA PALMOUR        |
| ROSALYN CRISPIN        | EVA POLIAKOFF          |
| LUCILE DENNISON        | KATHRYN PRINTUP        |
| ALICE DUNBAR           | VERA FRANCES PRUET     |
| NELLIE MARGARET GILROY | MARTHA REDWINE         |
| HELEN HANDTE           | MARIE SIMPSON          |
| FANNIE B. HARRIS       | MARY ELIZABETH SQUIRES |
| FRANCES JAMES          | MARIE STALKER          |
|                        | MARIE TOWNSEND         |





Top Row: ADAMS, BATES, CALHOUN, DERRICK, DIMMOCK, EDWARDS, FOUNTAIN, GOSS  
 Second Row: GREEN, GRIMSON, HEATON, JAMES, LAWRENCE, POLIAKOFF, RACE, TOWNSEND

## INTERNATIONAL RELATIONS CLUB

The International Relations Club was organized in 1921 to acquaint the students with affairs of current interest and world problems.

### OFFICERS

ROSALYN CRISPIN	President
SARAH CATHERINE WOOD	Vice-President
ROSA FROM	Secretary-Treasurer

### MEMBERS

MARY ADAMS  
 CATHERINE BATES  
 MARIAN CALHOUN  
 MARIAN DERRICK  
 HARRIET DIMMOCK  
 FIDESAH EDWARDS  
 BETTY FOUNTAIN  
 LITA GOSS  
 MARY GREEN  
 LILLIAN GRIMSON  
 ELIZABETH HEATON  
 FRANCES JAMES  
 SARA LAWRENCE  
 EVA POLIAKOFF  
 MADELINE RACE  
 MARIE TOWNSEND



Top Row: CRISPIN, WOOD  
 Second Row: FROM





Top Row: AUSTIN, CHRISTIAN, CLARK, CUNNINGHAM, HART, HOUCK, JOHNSON, JONES  
 Second Row: KENNEDY, LASSETER, MILLER, SPENCER, THING, MARY THOMPSON, M. THOMPSON, WOOD

## GLEE CLUB

The Glee Club, under the direction of Mr. Johnson, always attempts to present good music programs. Their presentations at the college, over the radio, and in the various Atlanta churches are of widespread enjoyment.

### OFFICERS

EVELYN WALL . . . . .	President
AUGUSTA KING . . . . .	Vice-President
FRANCES WILSON . . . . .	Secretary
ALICE CHAMLEE . . . . .	Treasurer

### MEMBERS

- NETTIE MAE AUSTIN
- SHIRLEY CHRISTIAN
- JANE CLARK
- CATHERINE CUNNINGHAM
- LOIS HART
- BETTY LOU HOUCK
- SARAH JOHNSON
- SARAH JONES
- RACHEL KENNEDY
- FLORENCE LASSETER
- ROSA MILLER
- LEONORA SPENCER
- JULIA THING
- MARY THOMPSON
- MILDRED THOMPSON
- VIRGINIA WOOD



Top Row: WALL, KING  
 Second Row: WILSON, CHAMLEE





## COLLEGE CHOIR

### Back Row:

VIRGINIA WOOD  
 AUGUSTA KING  
 LILLIAN WHITEHURST  
 BETTY LOU HOUCK  
 SARA LAWRENCE  
 LOUISE BROWN  
 LUCILLE CAIRNS  
 C. CUNNINGHAM  
 LEONORA SPENCER  
 LOUISA HART  
 BETTY HOLLIS  
 JESSIE JEFFERS  
 HELEN PRICE  
 MARY ALICE NEWTON  
 BERTHA MERRILL  
 ROSA MILLER  
 JANE CLARK

### Second Row:

ROSE NORTHCROSS  
 MARY HULL  
 ANNE TAYLOR  
 JULIETTE PUETT  
 JOYCE ROPER  
 FRANCES STEELE  
 LOUISE NORRIS  
 JANE ALLEN WEBB  
 EUNICE JOHNSON  
 ALICE HANNAH  
 SHIRLEY CHRISTIAN  
 MEREDITH TURNER  
 MARIE STALKER  
 JULIA THING  
 MARY PAST

### Third Row:

JEAN BARRY ADAMS  
 GENE CALDWELL  
 FRANCES WILSON  
 NETTIE MAE AUSTIN  
 FLORENCE LASSETER  
 SARAH JOHNSON  
 MARGARET KELLER  
 PRIMROSE NOBLE  
 BETH BOWDEN  
 K. BRITTINGHAM  
 SARAH JONES  
 ANNA K. FULTON  
 KATHERINE LEIPOLD  
 NELL HEMPHILL  
 FRANCES ROBINSON  
 ANNE W. JOHNSON  
 EVELYN WALL  
 MILDRED THOMPSON  
 SARAH B. SLOAN  
 CAROLYN ELLIOT

### First Row:

RUTH TATE  
 SARAH STEELE  
 MARTHA YOUNG  
 CAROLINE ARMISTEAD  
 MARY RICE ALLEN  
 GERALDINE YOUNG  
 KATHRYN PRINTUP  
 RACHEL KENNEDY  
 MURIEL FLOYD  
 ALICE CHAMLEE  
 MILDRED DAVIS  
 LETTIE McKAY  
 CAROLINE PHILLIPS  
 MARY THOMPSON

## SPECIAL CHORUS

### Back Row:

ROSA MILLER  
 JANE CLARK  
 EVELYN WALL  
 SARAH JONES  
 BETTY LOU HOUCK  
 MARY PERRY  
 VIRGINIA WOOD

### Front Row:

MARY THOMPSON  
 MILDRED THOMPSON  
 SHIRLEY CHRISTIAN  
 ALICE CHAMLEE  
 MARTHA YOUNG  
 AUGUSTA KING  
 GERALDINE YOUNG





Top Row: BOGGS, MARTIN, PRINTUP, THOMAS  
 Second Row: TURNER, WOOD

## POETRY CLUB

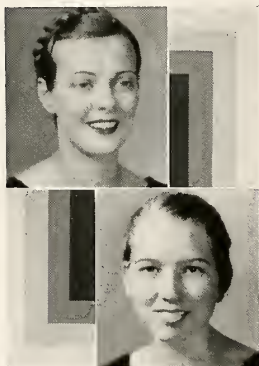
Since its organization in 1921 it has been the purpose of the Poetry Club to stimulate interest in contemporary poetry and to encourage the writing of verse by students. Several members have received national recognition for their work.

### OFFICERS

FRANCES ESPY . . . . . President  
 MILDRED CLARK . . . . . Secretary

### MEMBERS

- MARY BOGGS
- ANN MARTIN
- KATHRYN PRINTUP
- JANE THOMAS
- SARAH TURNER
- SARAH CATHERINE WOOD



ESPY, CLARK





Top Row: ALLEN, CASSELS, CHRISTIE, DULS, HUDSON, HULL, JOHNSON, JONES  
 Second Row: MORROW, SHUTZE, TILLY, THRASHER, TURNER, WHITE, WARE

## BIBLE CLUB

The Bible Club was organized for students of Bible twelve years ago. The officers are chosen from the majors in Bible, and the purpose of the club is to bring subjects of interest related to Bible study and missionary work to its members.

### OFFICERS

MARIE SIMPSON . . . . .	President
ADELAIDE STEVENS . . . . .	Vice-President
IRENE WILSON . . . . .	Secretary
FRANCES CARY . . . . .	Treasurer

### MEMBERS

- MARTHA ALLEN
- JANE CASSELS
- CORNELIA CHRISTIE
- MAE DULS
- MARY HUDSON
- MARY HULL
- ELLEN JOHNSON
- ORIZIBA SUSAN JONES
- ELIZABETH MORROW
- ALSINE SHUTZE
- MILDRED TILLY
- ELIZABETH THRASHER
- SUSAN TURNER
- CAROLYN WHITE
- PEGGY WARE



Top Row: SIMPSON, STEVENS  
 Second Row: WILSON, CARY





Top Row: ADAMS, ARMISTEAD, CAIRNS, DANIEL, DIMMOCK, FORMAN, HARRIS, HENDERSON, HULL  
 Second Row: JACKSON, JOHNSON, LEE, McCULLY, MORRISON, MUSE, PALMOUR, TRIBBLE, TURNER

## GRANDDAUGHTERS' CLUB

Since its reorganization in 1930, the Granddaughters' Club has again become a tradition of the campus. It is composed of those girls whose mothers once attended Agnes Scott. The Christmas banquet was an interesting feature this year.

### OFFICERS

MARTHA REDWINE . . . . . President  
 VIRGINIA GAINES . . . . . Vice-President  
 BARTON JACKSON . . . . . Secretary-Treasurer



Top Row: REDWINE, GAINES  
 Second Row: JACKSON

### MEMBERS

MARY ADAMS  
 CAROLINE ARMISTEAD  
 LUCILLE CAIRNS  
 KATHLEEN DANIEL  
 HARRIET DIMMOCK  
 ELIZABETH FORMAN  
 FANNIE B. HARRIS  
 MARY HENDERSON  
 MARY HULL  
 BARTON JACKSON  
 MARTHA JOHNSON  
 DOROTHY LEE  
 FRANCES McCULLY  
 CLARA MORRISON  
 ORA MUSE  
 ALBERTA PALMOUR  
 MARY NELL TRIBBLE  
 SUSAN TURNER







Top Row: ALLEN, AMES, CLARK, GOSS  
 Second Row: HUMBER, LANEY, MARTIN, ROBINS

## B. O. Z.

B. O. Z. was organized in 1916 as the prose writing club of the campus in order to foster literary efforts among the students and to improve the writing of the members by mutual criticisms and discussions at the meetings.

### OFFICER

EDITH MERLIN . . . . . President

### MEMBERS

- MARY VIRGINIA ALLEN
- LULU AMES
- MILDRED CLARK
- LITA GOSS
- ANNA HUMBER
- MARTHA SUE LANEY
- ANN MARTIN
- MARGARET ROBINS



EDITH MERLIN





Top Row: ALLEN, AUSTIN, CALHOUN, CHAMPION, COFFEE, DEASON, EDWARDS, FROM  
 Second Row: HERTWIG, HUTTON, MARTIN, MORRIS, MORRISON, PECK, POLIAKOFF, ROBINS  
 Third Row: ROBINSON, SMITH, STOKEY, SUMMERS, TURNER, WALKER, WHITNER, WILLIS

## GERMAN CLUB

The German Club was organized several years ago with Miss Harn as the supervisor. The purpose of the club is to help the students of German become more familiar with the spoken language and all phases of German culture through outside speakers and interesting programs.

### OFFICERS

MARY BOGGS	President
KATHERINE HERTZKA	Vice-President
ETHELYN JOHNSON	Secretary-Treasurer



Top Row: BOGGS, HERTZKA  
 Second Row: JOHNSON

### MEMBERS

MARY VIRGINIA ALLEN	CLARA MORRISON
JEAN AUSTIN	HARRIET PECK
MARIAN CALHOUN	EVA POLIAKOFF
JENNIE CHAMPION	MARGARET ROBINS
ANN COFFEE	GRACE ROBINSON
MARY LILLIAN DEASON	SUZANNE SMITH
FIDESAH EDWARDS	MARGARET STOKEY
ROSA FROM	MARY SUMMERS
BARBARA HERTWIG	SARAH TURNER
RUBY HUTTON	MARY WALKER
ANN MARTIN	LAURA WHITNER
MARGUERITE MORRIS	BETTY WILLIS





Top Row: BULL, CASSELS, CARMICHAEL, CORNELLY, DEASON, EDWARDS, GRIMSON  
 Second Row: HUNT, HUTCHINSON, REDWINE, ROWE, SMITH, WAGNER, PHILLIPS

## SPANISH CLUB

The Spanish Club was organized several years ago under the auspices of the Spanish department in order to familiarize Spanish students with the language in conversation and to give information relating to Spain and the study of Spanish.

### OFFICERS

LOIS HART . . . . . President  
 CORNELIA CHRISTIE . . . . . Vice-President  
 MARY LOUISE LATIMER . . . . . Secretary-Treasurer

### MEMBERS

MERIEL BULL  
 JANE CASSELS  
 TRELIS CARMICHAEL  
 MARY CORNELLY  
 MARY LILLIAN DEASON  
 FIDESAH EDWARDS  
 LILLIAN GRIMSON  
 RUTH HUNT  
 MARY HUTCHINSON  
 CAROLINE PHILLIPS  
 MARTHA REDWINE  
 EMILY ROWE  
 SUZANNE SMITH  
 MARIE WAGNER

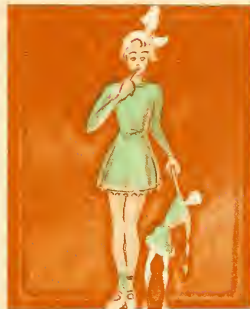


Top Row: HART, CHRISTIE  
 Second Row: LATIMER





# Pastimes













Athletics



## SENIOR HOCKEY TEAM

JACQUELINE WOOLFOLK  
Manager

FRANCES McCALLA  
Captain

### MEMBERS

EVA CONSTANTINE  
CAROLINE LONG  
FRANCES McCALLA  
ALBERTA PALMOUR  
EVA POLIAKOFF  
LEONORA SPENCER  
JACQUELINE WOOLFOLK  
ELIZABETH YOUNG

Top Row: POLIAKOFF, PALMOUR, CONSTANTINE, YOUNG.  
Bottom Row: McCALLA, WOOLFOLK, LONG, SPENCER.

## RESULTS OF THE SEASON

October 19th

Juniors vs. Sophomores  
7 - 1

October 26th

Juniors vs. Freshmen  
4 - 0

November 2nd

Sophomores vs. Freshmen  
2 - 5

Top Row: ARMSTRONG, BURSON, CRENSHAW, DERRICK, ESTES, FORMAN.  
Bottom Row: HANDTE, HART, MILLER, STEVENS, TOWNSEND.

## JUNIOR HOCKEY TEAM

MARTHA CRENSHAW  
Manager

MARTHA CRENSHAW  
Captain

### MEMBERS

LENA ARMSTRONG  
ELIZABETH BURSON  
MARTHA CRENSHAW  
MARION DERRICK  
SARA FRANCES ESTES  
ELIZABETH FORMAN  
HELEN HANDTE  
LOIS HART  
ROSA MILLER  
ADELAIDE STEVENS  
MARIE TOWNSEND



## SOPHOMORE HOCKEY TEAM

ROSA WILDER  
Manager

MARY KNEALE  
Captain

### MEMBERS

EDITH BELSER  
FRANCES CARY  
CHARLINE FLEECE  
BARBARA HERTWIG  
BARTON JACKSON  
MARY KNEALE  
FLORENCE LASSETER  
FLORENCE LITTLE  
ALICE TAYLOR  
ANNE WALKER  
ROSA WILDER



Top Row: BELSER, CARY, FLEECE, HERTWIG, JACKSON, JOHNSON.  
Bottom Row: KNEALE, LASSETER, LITTLE, TAYLOR, WALKER, WILDER.

## RESULTS OF THE SEASON

Juniors vs. Sophomores  
3 - 1

November 9th

Seniors vs. Freshmen  
1 - 0

November 16th  
Juniors vs. Freshmen  
0 - 1

Top Row: ALLISON, BROWN, HASSELL, HIGHTOWER, ROBINSON, TRIBBLE.  
Bottom Row: ADAMS, BLACKSHEAR, COIT, HENDERSON, JEFFERS, THOMPSON.



## FRESHMAN HOCKEY TEAM

ANN THOMPSON  
Manager

LAURA COIT  
Captain

### MEMBERS

BETTY ADAMS  
NELL ALLISON  
ELIZABETH BLACKSHEAR  
MARTHA PETE BROWN  
LAURA COIT  
HIBERNIA HASSELL  
KENNON HENDERSON  
VIRGINIA HIGHTOWER  
JESSIE JEFFERS  
FRANCES ROBINSON  
ANN THOMPSON  
MARY NELL TRIBBLE





Top Row: BURSON, CRENSHAW, FORMAN, HART, STEVENS, WALKER.  
 Bottom Row: ARMSTRONG, COIT, FLEECE, HANDTE, MILLER, THOMPSON, WILDER.

## HOCKEY VARSITY

### Forward Line

ELIZABETH BURSON  
 LAURA COIT  
 CHARLINE FLEECE  
 HELEN HANDTE

LOIS HART  
 ADELAIDE STEVENS  
 ANN THOMPSON  
 ANNE WALKER

### Back Field

LENA ARMSTRONG  
 MARTHA CRENSHAW

ELIZABETH FORMAN  
 ROSA MILLER

ROSA WILDER

## RESULTS OF THE SEASON

November 23rd

Freshmen vs. Sophomores  
 1 - 3

Juniors vs. Seniors  
 1 - 1

The banner was won by the Junior team.





Left to Right: BULL, COFFEE, RICHARDSON, McCALLIE, BURSON. Left to Right: JOHNSON, PRINTUP, JACKSON, KNEALE, LASSETER, TIGERT.

### JUNIOR SWIMMING TEAM

MERIEL BULL  
Manager

#### MEMBERS

MERIEL BULL  
ELIZABETH BURSON  
ANN COFFEE  
ALICE McCALLIE  
MARY RICHARDSON

### SOPHOMORE SWIMMING TEAM

MARY JOHNSON  
Manager

#### MEMBERS

BARTON JACKSON  
MARY JOHNSON  
MARY KNEALE  
FLORENCE LASSETER  
KITTY PRINTUP  
MARY JANE TIGERT

### FRESHMAN SWIMMING TEAM

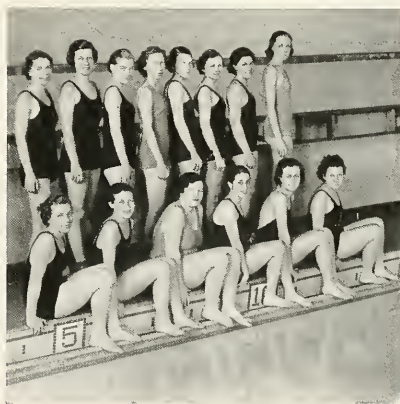
ANN WORTHY JOHNSON  
Manager

#### MEMBERS

FRANCES BAKER  
BETH BOWDEN  
KATHERINE BRITTINGHAM  
JEAN CHALMERS  
MARY LILLIAN FAIRLY  
KENNON HENDERSON  
ANN WORTHY JOHNSON  
JEANNE MATTHEWS  
MARGARET MORRISON  
CONSTANCE PARDEE  
KATHERINE RICKS  
MARY VENETIA SMITH  
MARY STIPE  
MARGARET WRIGHT

The Banner was won by  
the Sophomore team.

Top Row: PARDEE, CHALMERS, STIPE, HENDERSON, FAIRLY, WRIGHT, BRITTINGHAM, BOWDEN.  
Bottom Row: BAKER, SMITH, MATTHEWS, MORRISON, RICKS, JOHNSON.





Left to Right: WHITE, HUTCHINSON, BROWN, SMITH, PRUET.

## RIDING TEAM

GENE BROWN  
 MARY HUTCHINSON  
 VERA PRUET  
 LORRAINE SMITH  
 NELL WHITE

Nell White won first place in the horse show held in the fall at the Biltmore Riding Academy.

## HIKING SQUAD

FRANCES CARY  
 Manager

### MEMBERS

MARY ALICE BAKER  
 GENE BROWN  
 FRANCES CARY  
 HIBERNIA HASSELL  
 DOROTHY LEE  
 FLORENCE LITTLE  
 BERTHA MERRILL  
 ESTHER SOUTTER  
 MARIE STALKER  
 ANNE WALKER  
 REBECCA WHITLEY

Top Row: TALMAGE, WOOD, FORMAN, WHITLEY, O'NEAL.  
 Center Row: DEASON, McCALLA, McKOIN.  
 Bottom Row: CUNNINGHAM, STOWE, BEASLEY.



Top Row: SOUTTER, STALKER, WHITLEY, MERRILL, BAKER, BROWN.  
 Bottom Row: LITTLE, HASSELL, CARY, WALKER, LEE.



## OUTING CLUB

MARY MARGARET STOWE  
 President

### MEMBERS

MARY BEASLEY  
 CATHERINE CUNNINGHAM  
 MARY LILLIAN DEASON  
 ELIZABETH FORMAN  
 FRANCES McCALLA  
 DEAN McKOIN  
 MYRA O'NEAL  
 MARY MARGARET STOWE  
 MIRIAM TALMAGE  
 REBECCA WHITLEY  
 SARAH CATHERINE WOOD



## LIFE SAVERS

ELIZABETH BURSON  
 MARTHA CRENSHAW  
 MARY JOHNSON  
 MARY KNEALE  
 JEANNE MATTHEWS  
 ALICE McCALLIE  
 ALBERTA PALMOUR  
 MARIE STALKER  
 EUGENIA SYMMS



Left to Right: BURSON, SYMMS, STALKER, PALMOUR, CRENSHAW, KNEALE, McCALLIE, MATTHEWS, JOHNSON.



Left to Right: COFFEY, HANDTE, McCALLA, ARMSTRONG, BURSON.

## WEARERS OF THE A. S. C.

LENA ARMSTRONG  
 ELIZABETH BURSON  
 ANN COFFEY  
 HELEN HANDTE  
 FRANCES McCALLA

A letter is given to those girls who have made a certain number of points measured by their achievement in various sports.

Standing: KENNEDY, DAVIS, SPENCER, STALKER, MERRILL, SMITH.  
 Insert: GAINES.

## CHEER LEADERS

Senior

LEONORA SPENCER

Junior

ELLEN DAVIS                      VIRGINIA GAINES

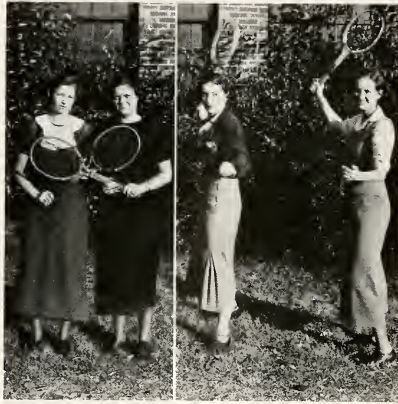
Sophomore

RACHEL KENNEDY              MARIE STALKER

Freshman

BERTHA MERRILL      MARY VENETIA SMITH





Left to Right: TALMAGE, LAWRENCE, KNEALE, McDONALD.

## TENNIS WINNERS

### DOUBLES TOURNAMENT

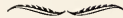
First Place

MARY KNEALE      FRANCES McDONALD

Second Place

MIRIAM TALMAGE      SARAH LAWRENCE

This tournament was held in the fall. The singles tournament was played late in the spring.



## TENNIS CLUB

MARY KNEALE  
President

### MEMBERS

MARY KNEALE  
ELEANOR LEMMON  
FRANCES McDONALD  
LISELOTTE RONNECKE  
MIRIAM TALMAGE  
JULIA THING  
SARAH CATHERINE WOOD  
MARTHA YOUNG

Members of this club are chosen through well-supervised try-outs. The tournaments held throughout the season are sponsored by this group.

Left to Right: McDONALD, RONNECKE, TALMAGE, THING, YOUNG, KNEALE, LEMMON, WOOD.





## WINNER OF THE GOLF TOURNAMENT

VIRGINIA WOOD

A golf tournament is held every year in the fall, the winner receiving a cup which she retains throughout the year.



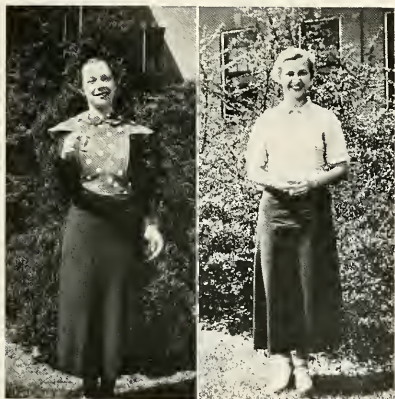
WOOD

## MISSES HEALTH

NELL WHITE

HELEN HANDTE

These girls tied in the contest held at the end of Health Week for the title of the healthiest Hottentot.



WHITE

HANDTE

WALKER

## WINNER OF THE HOCKEY STICK

ANNE WALKER

This stick is awarded annually to that member of the Sophomore hockey team who has shown the most ability and skill in playing.





Left to Right: JACKSON, TIGERT, LASSETER, JOHNSON, PRINTUP. Top Row: CALDWELL, MERRILL, CRENSHAW, JONES.  
Bottom Row: BROWN, JOHNSON, FORMAN.

## WATER POLO

### SENIOR-SOPHOMORE TEAM

MARY JOHNSON  
Manager

#### MEMBERS

BARTON JACKSON  
MARY JOHNSON  
FLORENCE LASSETER  
KITTY PRINTUP  
MARY JANE TIGERT

### JUNIOR-FRESHMAN TEAM

ANN WORTHY JOHNSON  
Manager

#### MEMBERS

MARTHA PETE BROWN  
GENE CALDWELL  
MARTHA CRENSHAW  
ELIZABETH FORMAN  
ANN WORTHY JOHNSON  
SARAH JONES  
BERTHA MERRILL  
KATHERINE RICKS

### RESULTS OF THE SEASON

February 19th  
Senior-Sophomore vs. Junior-Freshman  
2 - 2

February 27th  
Senior-Sophomore vs. Junior-Freshman  
4 - 0





Left to Right: STEVENS, WALKER, BURSON, BISHOP, BENNETT, SPENCER, HANDTE.

## BASKET-BALL VARSITY

### Forwards

KATHERINE BENNETT  
 KATHERINE BISHOP  
 HELEN HANDTE  
 ADELAIDE STEVENS  
 ANNE WALKER

### Guards

ELIZABETH BURSON  
 LEONORA SPENCER  
 MARIE STALKER

The banner was won by the Junior team.

## RESULTS OF THE SEASON

January 25th

Juniors vs. Sophomores  
 37 - 22

Seniors vs. Freshmen  
 31 - 15

February 1st

Freshmen vs. Juniors  
 31 - 38

Sophomores vs. Seniors  
 36 - 13





## SENIOR BASKET-BALL TEAM

ELIZABETH YOUNG  
Manager

LEONORA SPENCER  
Captain

MEMBERS  
MARTHA ALLEN  
FRANCES ESPY  
EVA POLIAKOFF  
LEONORA SPENCER  
ELIZABETH YOUNG

Left to Right: ALLEN, ESPY, POLIAKOFF, YOUNG, SPENCER.

## RESULTS OF THE SEASON

February 8th

Freshmen vs. Sophomores  
31 - 31

Juniors vs. Seniors  
41 - 5

February 15th

Freshmen vs. Seniors  
34 - 19

Sophomores vs. Juniors  
24 - 18

Top Row: BISHOP, BURSON, ESTES, HART, STEVENS.  
Bottom Row: ARMSTRONG, BROSNAN, DERRICK, HANDTE, LATIMER.

## JUNIOR BASKET-BALL TEAM

SARA FRANCES ESTES  
Manager

ELIZABETH BURSON  
Captain

MEMBERS  
LENA ARMSTRONG  
KATHERINE BISHOP  
ELIZABETH BURSON  
MARION DERRICK  
SARA FRANCES ESTES  
HELEN HANDTE  
LOIS HART  
CARRIE PHINNEY LATIMER  
ADELAIDE STEVENS



## SOPHOMORE BASKET-BALL TEAM

CHARLINE FLEECE  
Manager

MARY KNEALE  
Captain

### MEMBERS

EDITH BELSER  
KATHERINE BENNETT  
CHARLINE FLEECE  
BARBARA HERTWIG  
MARY KNEALE  
FLORENCE LITTLE  
ISOBEL McCAIN  
MARIE STALKER  
JULIA THING  
ANNE WALKER



Top Row: BENNETT, HERTWIG, LITTLE, STALKER, WALKER.  
Bottom Row: BELSER, FLEECE, KNEALE, McCAIN, THING.

## RESULTS OF THE SEASON

	February 18th	
Seniors vs. Sophomores 11 - 35		Freshmen vs. Juniors 26 - 42
	March 1st	
Freshmen vs. Sophomores 22 - 41		Juniors vs. Seniors 38 - 11

Top Row: ADAMS, ALLISON, BLACKSHEAR, COIT, DAVIS, JEFFERS, KING.  
Bottom Row: MIDDLETON, NOBLE, PARDEE, ROBINSON, THOMPSON, TRIBBLE, WARE.

## FRESHMAN BASKET-BALL TEAM

FRANCES ROBINSON  
Manager

CONSTANCE PARDEE  
Captain

### MEMBERS

BETTY ADAMS  
NELL ALLISON  
ELIZABETH BLACKSHEAR  
LAURA COIT  
MILDRED DAVIS  
JESSIE JEFFERS  
ELIZA KING  
ENID MIDDLETON  
PRIMROSE NOBLE  
CONSTANCE PARDEE  
FRANCES ROBINSON  
ANN THOMPSON  
MARY NELL TRIBBLE  
EDNA WARE





Back Row: DERRICK, CLARK, ARMSTRONG, CRENSHAW.  
 Front Row: KNEALE, WEEKS, BURSON, HART, JOHNSON.

## SOCCKER GROUP

Class Managers

MILDRED CLARK  
 Junior

ROSA WILDER  
 Sophomore

WINIFRED KELLERSBERGER  
 Freshman

There were no soccer class teams this year since the number of girls playing soccer was not large enough to be divided into three or four teams.

## ARCHERY GROUP

This group is representative of those girls who went out for a sport which is becoming more popular on the campus every year.



Left to Right: STRICKLAND, TURNER, LATIMER, COOPER, HEMPHILL.

Left to Right: MOORER, PERRIN, SCOTT, McDONALD.



## GOLF GROUP

Interest in golf was quite widespread this year. Many of the girls took part in the golf tournament held in the fall at Forest Hills Golf Club.





# Campus Life



FRESH

This is the way we  
learned their names.

So thees eez  
America!

Could we dare call this Spring  
tree just blossomed a symbol  
of the Freshman Class?

What! Admirers from  
Seminary already!

Branded!

They're BIRDS!

A kid party this year as a  
substitute for rapping.

A glamorous sight  
to new eyes.

The baby to the left  
took first prize.





### SCHOOL BEGINS!

Everything but the kitchen sink!

A familiar haunt.

To classes, to classes, jiggety-jig!

What! Leaving us so soon, Caroline?

Fresh arrivals.

And did you have a nice time during the summer?

Presenting little sister!

The same old quadrangle.

"Show me the way to go home."

The faculty's back on the job, too.



## STUNT NIGHT

Oct. 13, 1934.

Winners of the Black Cat—Sophomores.

Chairman Soph. Stunt—Barbara Hertwig.

Chairman Freshman Stunt—Mildred F. Brown.

### REVERE THE SOPH.

Heed, the town crier.

Revere, the Soph.

Boo, the Frosh.

Whatt! the villager.

Probably, the Dean.

It's, the girl,

She's, the lady,

Why, the house-president?

Page, the waiter.

### A MARS CONFECTION.

Touchdown, the hero.

Kitty, the heroine.

Queen of Mars.

Big Dec & Little Dec.

Sophomore & Sophless.

Bot & Zoo.

Mail Caller.



THE FACULTY AS WE KNOW THEM

En route to officiate at chapel.	A famous pace.	Back of Miss Laney.	Mr. J. is just a pal.	Wayve.	Damon & Pythias
Scotch & nice.	Miss Haynes is anything but a crank.	Miss Lewis's stately figure.	Miss McKinney can't take it.	Any fever?	Looks like Miss Gooch.
		Whitaker in a huddle.	Our artist again.	Information bureau.	Parlez-vous?



### CAMPUS PEP

We want a goal!

A minute's respite.

We eat Grape-Nuts!

What more inspiring than a picnic at camp?

Huddle!

Her side won.

Warning all passersby.

Germany well represented.

And just for the sake of contrast—Fanny.

Dyna & Mite.

Ready—set,

—GO!



LITTLE GIRL DAY

Aw, shux, mister.  
You quit . . .

Ssints & a cherub.

Too windy  
for Jenny

Look pretty!

Skipping—  
to Buttrick!

Behave, Fidesah!

True to type.

Gimme!

Leggo my curls!

Tug o' war?

Let's play like . . .

Mickey Mouse Club.

Another famous  
Fluff.

Isn't he toot!

Aren't they  
kittenish?

Lost again!

Little Miss Muffet.

Ah, Youth!



INVESTITURE

One of Agnes Scott's famous traditions.

Transformed!  
(Yessir, we said Seniors!)

Sweet young things!

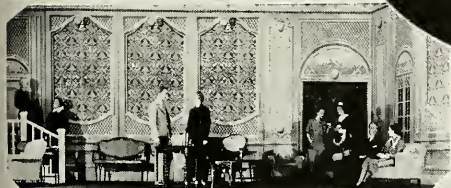
Here comes the thrill,  
girls—and the tears.

"Ancient of Days."

The sister class leads the way.

Just before taking.

The procession.



## BLACKFRIAR PLAYS

Produced under the production of Miss Frances K. Gooch.

Scenes from

YOU NEVER CAN TELL, by George Bernard Shaw,  
presented Nov. 16 & 17, 1934.

CRAIG'S WIFE, by George Kelly,  
presented Mar. 1 & 2, 1935.

(See if you can recognize Betty Lou Houck, Hester Anne Withers, Ida Lois McDaniel, Vera Frances Pruet, Mary Hutchinson, Alice McCallie, Jimmy Jepson, Marion Camp, and Bob Gillespie.)



WELL-KNOWN FACTS AND FIGGERS

Behind scenes.

On the sidelines at a hockey game.

Oh, Betty Lou! What a chance to make Bealy fall for you!

Dispute between referees?

All set to get ads.

Who's winning?

Freshmen always turn out.

Back again?

The pause that refreshes.

Ditto.

Action!

Give our patient photographers a hand!





### MORTAR BOARDS ON AND OFF-GUARD

National Honorary Senior Society.

Two sunny dispositions,  
Martha's and Nell's.

Anna, our beloved  
President!

Officers all!

Mortars without the board.

Why so glum, Frank?

"Tinke" and "Brother".

"The surest sign of  
woman's worth . . ."

How many scholarships  
did you say, Mary?

The forum and  
the rostrum.



### FASHION PARADE

Sponsored by the SILHOUETTE and Cotillion Club.

(Dresses from Muse's, Rich's, and Martel's.)

Even an orchestra.  
(What! You here too!)

Master of Ceremonies.

All set to meet  
Spring in a gay way.

Nifty waitresses, eh what?

A model trio.



## FOUNDER'S DAY

Feb. 22, 1935.

Ben Franklin—"en-lightnin' "  
 Dan Boone—squeezing elbow room  
 Pat Henry—"Gimme . . ."

Once more the minuet.

George and Martha.

Cornwallis is evidently a  
 lady's man.

Colonial tableau.



MAY DAY  
 May 4, 1935  
 PETER PAN

Laura Whitner, the Queen.  
 Butterflies.

The Fairy Queen and Court.  
 Fairies.  
 Crowning the Queen.



MAY DAY

May 4, 1935

PETER PAN

White Bunnies and Toadfrogs.  
John, Wendy and Michael.  
Carpenters.

Peter Pan and Wendy.  
Lost Boys.

Daisies.  
Tinker Bell and Peter Pan.  
Pirates.



SENIOR OPERA

May 4, 1935

SAM'S SON and THE LILAC. (SAMSON and DELILAH).

Lilac and Her Maids.

Socrates and Xantippe, (I ain't got no money—she's the reason why).

Lady Good Iva,  
(Fight—boys—fight!)

The Cast en masse

Abimelech and the High Priest.

The Famous Hair-cut.

Hallelujah!! Lilac will help Athens  
Tech!



## GRADUATION

Scenes on Commencement Day and Class Day.

With special mention of the Sophomore daisy chain in the center—an impressive rite and a task not soon forgotten!

All over!





# ADVERTISEMENTS

*Summum*

*.....*

*Summum*

*Summum*

*Summum*

*Primum* ..... 00..

*.....*

*Sum*

*to See See*

*to See*

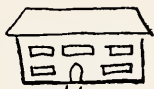
*Car. See See*



AFTER  
LUNCHEON  
MUNCH  
A  
HUNKIE



the seniors  
had what it  
takes — CAKES!



the new  
library



SCIENCE  
HALL



" CAMPAIGN



Get in this bread-line —  
it's the sophs with  
their luncheons



Lawrence's lost  
half their trade  
when those  
FRESHMEN  
GOT started!



ROBBIE

%

\$

\$

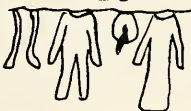
15,000
6,000
3,600
24,000

%

\$

¢

RUMMAGE SALE



JACKSON



ODDITIES"



ANNE T.



12  
7  
6  
5  
4  
3  
2  
1

APRIL 4

Here comes  
Fidesah!

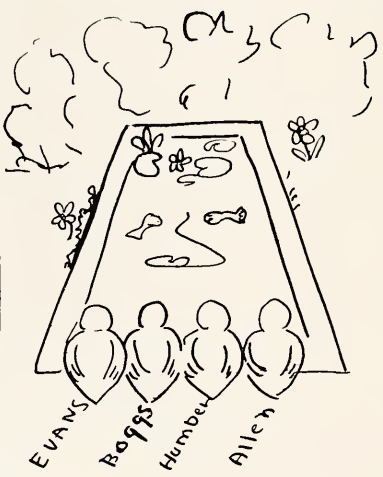


"AND then came the dawn"

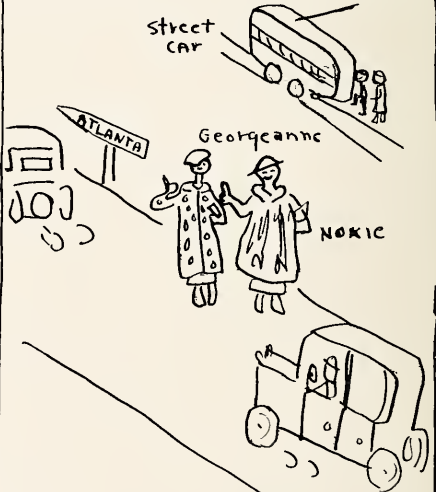


Kitty H.

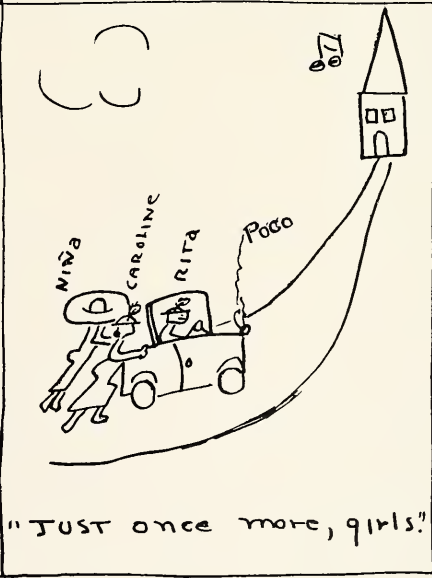
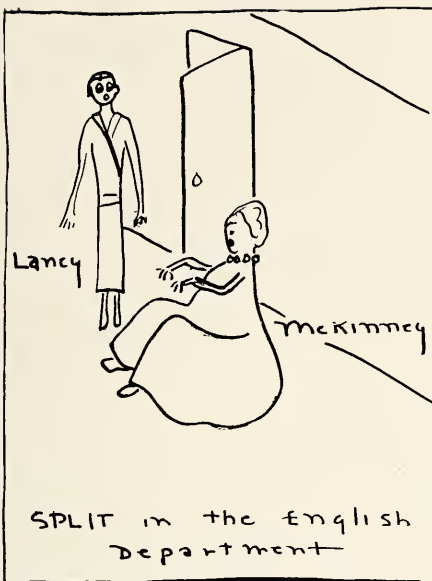
"I'm falling in Love--"



"Followers of Rousseau"



"Going out Way?--"



## LIST OF ADVERTISERS

AGNES SCOTT COLLEGE  
J. P. ALLEN & COMPANY  
ANTONIO'S STUDIO  
WALTER BALLARD OPTICAL COMPANY  
BAME'S, INC.  
SAMUEL BAUM  
BOWEN PRESS  
BRUMBY CHAIR COMPANY  
HOTEL CANDLER  
L. CHAJAGE  
COCA-COLA COMPANY  
CRICHTON'S BUSINESS COLLEGE  
C. A. DAHL  
DECATUR BEAUTY SALON  
DeKALB THEATRE  
HARRY F. DOBBS, INC.  
DOCTORS AND DENTISTS OF  
ATLANTA AND DECATUR  
THE DRAUGHON SCHOOL OF  
COMMERCE  
EAGER & SIMPSON  
EDWARDS & SAYWARD  
ESTES SURGICAL SUPPLY CO.  
LOUIS ISAACSON, INC.  
KAMPER'S PURE FOOD STORES  
LAWRENCE'S  
MARTEL, INC.  
MELBA CAFETERIA  
GEORGE MUSE CLOTHING COMPANY  
J. K. ORR SHOE COMPANY  
THREADGILL'S PHARMACY  
W. Z. TURNER LUGGAGE COMPANY  
THE VARSITY  
THE WOMAN'S EXCHANGE

AGNES SCOTT  
COLLEGE



A College for Women



DECATUR, GEORGIA

THREADGILL'S PHARMACY

•  
"All the better things of life including Elizabeth Arden's  
famous toiletries."

"THE CHOICE OF THE  
COLLEGE GIRLS"

◆  
MEET YOUR FRIENDS  
... at ...  
LAWRENCE'S

*Compliments  
of . . .*

C. A. DAHL  
◆  
YOUR FLORIST

*Compliments of . . .*



Everything in Furs : Storage and Repairing  
210 Peachtree Street  
Henry Grady Hotel      WAlnut 9776

Headquarters . . .

FOR LABORATORY SUPPLIES,  
BAKER C. P. CHEMICALS,  
SCIENTIFIC EQUIPMENT

Estes Surgical Supply Co.

ATLANTA ✓ GEORGIA

HOTEL CANDLER

•  
Clean, Comfortable Rooms  
Delicious Meals



BALLARD'S

*Three Stores*

It is essential that your optician is  
competent to fill your oculist  
prescription correctly

WALTER BALLARD  
OPTICAL COMPANY

*Three Stores*

105 PEACHTREE STREET, N. E.

*Medical Arts Bldg.*

382 PEACHTREE STREET, N. E.

*Doctors' Bldg.*

408 PEACHTREE STREET, N. E.

A T L A N T A

*Compliments  
of the . . .*

MELBA  
CAFETERIA

L. CHAJAGE

Dixie's Leading Furrier  
Expert Restyling

220 PEACHTREE STREET

FUR COLD STORAGE : FUR REMODELING

*If You Are Looking for*

FURS OF QUALITY

. . . SEE . . .

SAMUEL BAUM

At Regenstein's Peachtree Store

FUR CLEANING

BRUMBY CHAIR CO.

MARIETTA ✓ GEORGIA

THE  
SOUTH'S  
LEADING  
CHAIR  
MAKERS  
SINCE 1875

HARRY F. DOBBS, INC.

Hotel and Restaurant  
Supplies

285 PEACHTREE STREET, N. E.

# KAMPER'S

PURE FOOD STORES

•  
55 Years of  
Quality and Service

•  
THREE STORES IN ATLANTA

•  
"When Buying Foods Insist On Having the Best"

Philco, R. C. A. Victor and  
Atwater-Kent Radios

*Norge and Leonard Electric Refrigerators  
Victor and Brunswick Records*

**BAME'S, INC.**

107 PEACHTREE STREET  
OPPOSITE PIEDMONT HOTEL

**DECATUR BEAUTY  
SALON**

◆  
WE FEATURE

*All Kinds of Beauty Culture*

409 CHURCH ST. DE. 4692

**Crichton's Business College**

ESTABLISHED 1885  
ALL SECRETARIAL SUBJECTS

*Correspondence Course in  
Shorthand*

PLAZA WAY at PRYOR STREET  
Walnut 9341  
Atlanta, Georgia  
*Details Supplied Upon Request*

**W. Z. Turner Luggage Co.**

◆  
Modern Luggage

◆  
219 PEACHTREE STREET  
WALnut 6914

◆  
◆  
D E K A L B  
T H E A T R E  
◆  
◆

For the College Girl . . .

"FLEXES," FORMFITS, LE GANT  
AND LILY OF FRANCE GIRDLES

"Her Secret"—Maiden Form  
and Fan Brassieres

EAGER AND SIMPSON

24 CAIN STREET, N. E.

*Compliments*

*of . . .*

THE WOMAN'S  
EXCHANGE

DECATUR ✓ GEORGIA

*Compliments*

*of . . .*

B O W E N  
P R E S S



C O M P L I M E N T S  
  
O F T H E  
  
DOCTORS and DENTISTS  
  
✓ O F ✓  
  
ATLANTA AND DECATUR

THE VARSITY

61 NORTH AVENUE

CURB SERVICE

FOR THE NEWEST STYLES  
MODESTLY PRICED . . .

Always Shop at  
MARTEL, INC.

110 Peachtree Street, N. W.  
Entrance Piedmont Hotel

Compliments

...of the...

GEORGE MUSE

CLOTHING COMPANY

THE DRAUGHON  
SCHOOL of COMMERCE

High School Graduation and Character  
References ✓ Entrance Requirements

Better Than 40 Positions  
Filled per Month  
ATLANTA, GEORGIA

Compliments

...of the...

J. P. ALLEN & CO.  
The Store All Women Know

A N T O N I O

Your Hairdresser

All Branches of Beauty Culture  
Permanent Waves Our Specialty

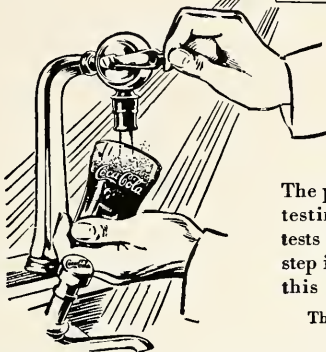
1041 West Peachtree  
ATLANTA, GEORGIA

Discount to All Agnes Scott Girls

# Pure as Sunlight



9  
MILLION  
a day



The proof of its *purity* is in the testing. Twenty-two scientific tests for *purity*, covering every step in its preparation, safeguard this drink of natural flavors.

The Coca-Cola Co., Atlanta, Ga.

EDWARDS & SAYWARD

◆  
ARCHITECTS  
◆

Atlanta

Georgia

Ask for  
Sport Shoes . . .

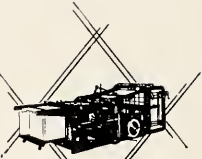
Made by

J. K. ORR SHOE CO.

ATLANTA, GEORGIA

## THE BUSINESS STAFF OF THE SILHOUETTE

Take this opportunity of expressing their appreciation for the co-operation of all the merchants who have supported us so willingly this year.

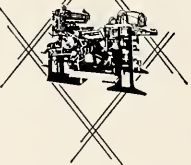
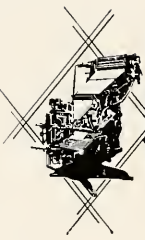


*Complete*  
EQUIPMENT

A KNOWN FACTOR IN THE FORMULA  
FOR A SUCCESSFUL ANNUAL IS  
THE SERVICE OF

**FOOTE & DAVIES COMPANY**

WHERE EVERY DETAIL OF THE PROCESSES OF  
CREATING . PLANNING . LAYOUT AND DESIGN  
TYPESETTING . PRINTING . LITHOGRAPHY  
AND BINDING IS DONE IN ONE  
PLANT BY EXPERT CRAFTSMEN  
USING THE FINEST OF  
MATERIALS





★ THE MARK THAT  
IDENTIFIES THE SOUTH'S  
FINEST YEARBOOKS

HOTO-PROCESS ENGRAVING CO.

115 - 119 LUCKIE STREET ★ ATLANTA GEORGIA















