





Mary Green



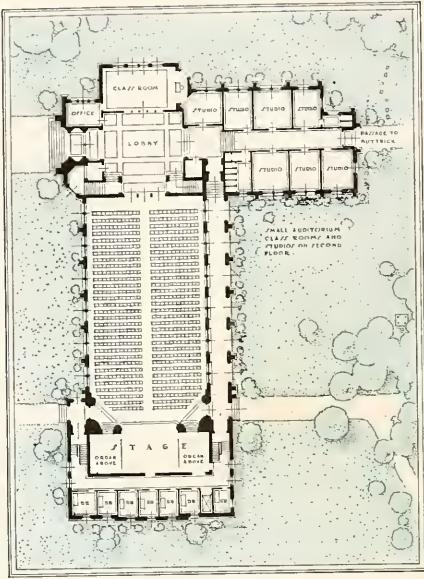




THE SILHOUETTE

1 9 3 4

AGNES SCOTT COLLEGE



Copyright 1934

ELINOR HAMILTON  
*Editor-in-Chief*

PAULINE GORDON  
*Business Manager*

PHOTOGRAPHY BY  
STANLEY STUDIO  
ENGRAVINGS BY  
PHOTO-PROCESS ENGRAVING CO.  
PRINTING AND BINDING BY  
FOOTE AND DAVIES CO.

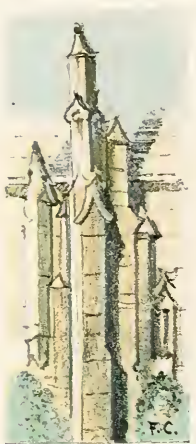
# THE SILHOUETTE

1 9 3 4



Student Publication of  
**AGNES SCOTT COLLEGE**  
DECATUR, GEORGIA

*Volume Thirty*



## DEDICATION

MISS ELIZABETH JACKSON, ONE WHOSE CULTURE SHOULD BE AN INSPIRATION, HAS UNTIRINGLY ENDEAVORED TO INSTILL IN AGNES SCOTT STUDENTS A REAL APPRECIATION OF ART, MUSIC, AND LITERATURE. MAY THIS DEDICATION OF THE SILHOUETTE 1934 DULY ACKNOWLEDGE HER INTEREST.



MISS ELIZABETH JACKSON

---

---

# D E S I G N

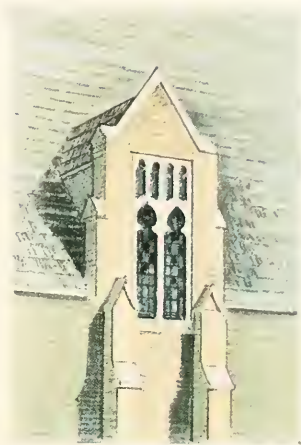
---

---

For many successful years, progress has been the keynote in Agnes Scott's program. Now a new achievement is on its way with the erection of the Presser Foundation Music Hall—our fine art attainment.

We welcome not merely tangible facilities for the study of fine arts; we welcome also an incorporate symbol of the intangible fine arts on our campus.

Through beautiful and representative buildings our comprehensive symbol is to be analyzed and elucidated. As do their significances celebrate arts, likewise will our building commemorate our learning, growth, organization, variety, beauty, and caprice.



---

---

P L A N

---

---

ART OF LEARNING

ART OF VARIETY

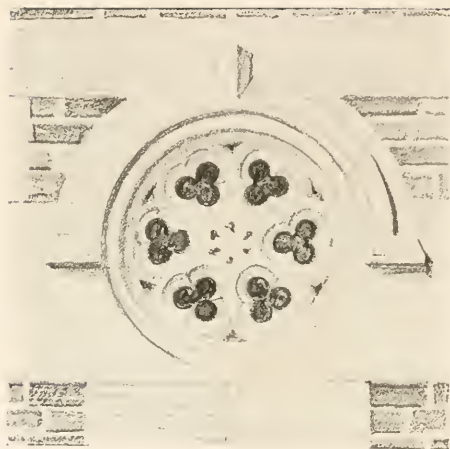
ART OF GROWTH

ART OF ORGANIZATION

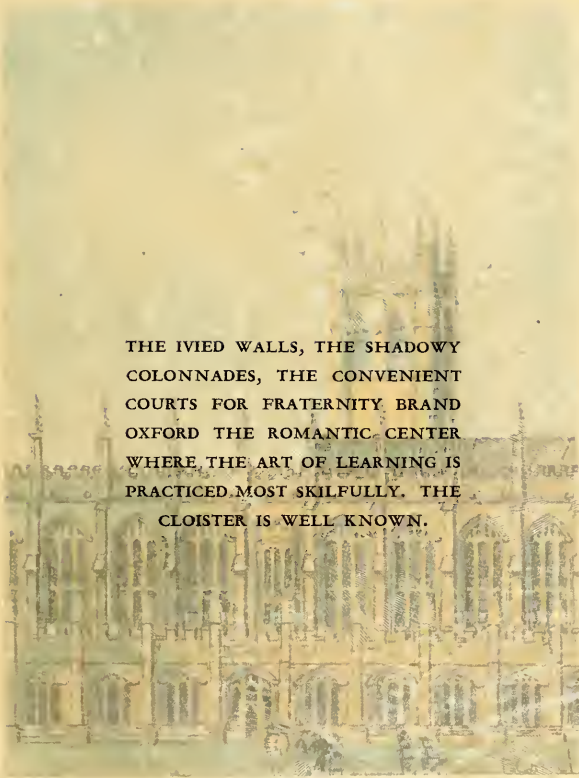
ART OF COOPERATION

ART OF BEAUTY

ART OF HUMOR

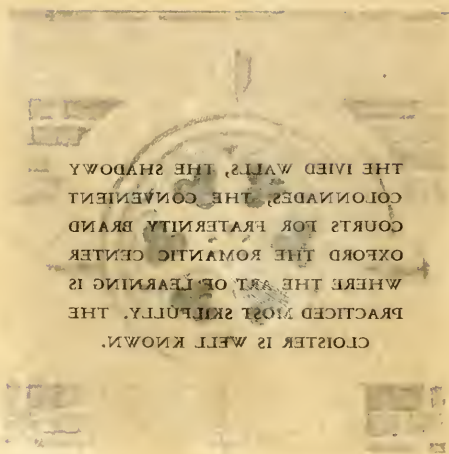






THE IVIED WALLS, THE SHADOWY  
COLONNADES, THE CONVENIENT  
COURTS FOR FRATERNITY BRAND  
OXFORD THE ROMANTIC CENTER  
WHERE THE ART OF LEARNING IS  
PRACTICED MOST SKILFULLY. THE  
CLOISTER IS WELL KNOWN.

# *ART OF LEARNING*



THE IVIED WALLS, THE SHADOWY  
COLONADES, THE CONVENIENT  
COURTS FOR FRATERNITY BRAND  
OXFORD THE ROMANTIC CENTER  
WHERE THE ART OF LEARNING IS  
PRACTICED MOST SKILFULLY. THE  
CLOISTER IS WELL KNOWN.

# ART OF LEARNING













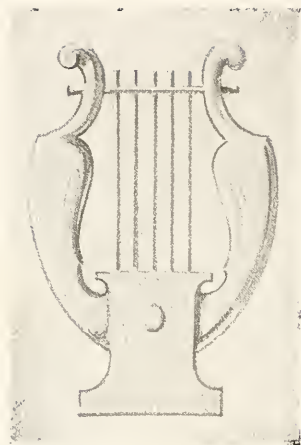












## Board of Trustees

J. K. ORR, Chairman . . . . .	<i>Atlanta, Ga.</i>
C. M. CANDLER . . . . .	<i>Decatur, Ga.</i>
W. C. VEREEN . . . . .	<i>Moultrie, Ga.</i>
J. S. LYONS . . . . .	<i>Atlanta, Ga.</i>
F. M. INMAN . . . . .	<i>Atlanta, Ga.</i>
MRS. SAMUEL M. INMAN . . . . .	<i>Atlanta, Ga.</i>
MRS. C. E. HARMAN . . . . .	<i>Atlanta, Ga.</i>
MISS MARY WALLACE KIRK . . . . .	<i>Tuscumbia, Ala.</i>
GEORGE E. KING . . . . .	<i>Atlanta, Ga.</i>
D. P. McGEACHY . . . . .	<i>Decatur, Ga.</i>
R. O. FLINN . . . . .	<i>Atlanta, Ga.</i>
H. T. McINTOSH . . . . .	<i>Albany, Ga.</i>
J. R. McCAIN . . . . .	<i>Decatur, Ga.</i>
J. J. SCOTT . . . . .	<i>Decatur, Ga.</i>
W. A. BELLINGRATH . . . . .	<i>Montgomery, Ala.</i>
G. SCOTT CANDLER . . . . .	<i>Decatur, Ga.</i>
E. D. BROWNLEE . . . . .	<i>Sanford, Fla.</i>
J. BULOW CAMPBELL . . . . .	<i>Atlanta, Ga.</i>
D. A. DUNSEITH . . . . .	<i>Clearwater, Fla.</i>
MISS NANNETTE HOPKINS . . . . .	<i>Decatur, Ga.</i>
JOHN McMILLAN . . . . .	<i>Stockton, Ala.</i>
W. J. RUSHTON . . . . .	<i>Birmingham, Ala.</i>
GEORGE WINSHIP . . . . .	<i>Atlanta, Ga.</i>
MISS LLEWELLYN WILBURN . . . . .	<i>Decatur, Ga.</i>
WARNER H. DuBOSE . . . . .	<i>Mobile, Ala.</i>
FRANCIS M. HOLT . . . . .	<i>Jacksonville, Fla.</i>



## President

JAMES ROSS MCCAIN, B.A., A.M., LL.D., PH.D.

*Erskine College, University of Chicago,  
Columbia University, Davidson College*



**Dean**

NANNETTE HOPKINS, LITT.D., PH.D.

*University of Georgia, Oglethorpe University*

# Administration

*Registrar*

SAMUEL GUERRY STUKES, A.B., B.D., M.A.

*Secretaries to the Registrar*

EMMIE J. ANSLEY

GLADYS R. CURTIS

*Treasurer*

J. C. TART

*Secretary to the Treasurer*

BETTY BONHAM



Stukes  
Tart

Cunningham

*Business Manager*

R. B. CUNNINGHAM, B.S.

*Housekeepers*

JENNIE DUNBAR FENNELL

LENA DAVIES

*Matron*

EMMA MILLER





## Faculty

### DEPARTMENT OF BIBLE

ALMA SYDENSTRICKER, M.A., PH.D.  
Wooster University  
*Professor*

JAMES THORNWELL GILLESPIE, A.B., B.D., TH.M., PH.D.  
Davidson College, Presbyterian Theological Seminary, The  
Southern Baptist Theological Seminary  
*Associate Professor*

### DEPARTMENT OF BIOLOGY

MARY STUART MACDOUGALL, B.A., M.S., PH.D.  
Randolph-Macon Woman's College, University of Chicago,  
Columbia University  
*Professor*

MARY WESTALL, A.B., M.A., PH.D.  
Randolph-Macon Woman's College, Columbia University,  
University of Chicago  
*Associate Professor*

\*RUTH JANETTE PIRKLE, A.B., M.S.  
Agnes Scott College, Emory University  
*Assistant Professor*

MARY AUTEN, B.A., M.A., PH.D.  
Bluffton College, Ohio State University  
*Acting Instructor in Biology*

BLANCHE MILLER, A.B.

Agnes Scott College

SARAH BOWMAN, A.B.

Agnes Scott College  
*Instructors*



Holt

Sydenstricker  
MacDougall



### DEPARTMENT OF CHEMISTRY

ROBERT B. HOLT, A.B., M.A.  
University of Wisconsin, University of Chicago  
*Professor*

PHILIPPA GARTH GILCHRIST, A.B., M.S., PH.D.  
Agnes Scott College, University of Wisconsin  
*Associate Professor*

MARGARET WHITTINGTON DAVIS, A.B.  
Agnes Scott College  
*Instructor*

\*Leave of absence 1913-14.

## Faculty

### DEPARTMENT OF ECONOMICS AND SOCIOLOGY

JAMES M. WRIGHT, A.B., PH.D.  
William Jewell College, Johns Hopkins University  
*Professor*

ARTHUR F. RAPER, A.B., M.A., PH.D.  
University of North Carolina, Vanderbilt University  
*Acting Professor of Sociology*

### DEPARTMENT OF ENGLISH

GEORGE P. HAYES, A.B., M.A., PH.D.  
Swarthmore College, Harvard University  
*Professor*

M. LOUISE MCKINNEY  
*Professor*

EMMA MAY LANEY, M.A., PH.D.  
Columbia University, Yale University  
*Associate Professor*

\*ANNIE MAY CHRISTIE, M.A.  
Columbia University  
*Assistant Professor*

JANEF PRESTON, A.B., M.A.  
Agnes Scott College, Columbia University  
*Assistant Professor*

RAYMOND WILSON, A.B., M.A.  
Agnes Scott College, University of North Carolina  
*Instructor*

FRANCES K. GOOCH, M.A., PH.D.  
Graduate Boston School of Expression, University of Chicago  
*Associate Professor*



Wright  
Hayes

Alexander

### DEPARTMENT OF FRENCH

ALICE LUCILE ALEXANDER, A.B., M.A.  
Agnes Scott College, Columbia University  
*Professor*

LOUISE HALE, A.B., M.A.  
Smith College, University of Chicago  
*Associate Professor*

MARGARET PHYTHIAN, A.B., M.A.  
Agnes Scott College, University of Cincinnati  
*Assistant Professor*



\*Leave of absence 1933-34.



# Faculty

## DEPARTMENT OF GERMAN AND SPANISH

EDITH MURIEL HARN, A.B., PH.D.  
Goucher College, Johns Hopkins University  
*Professor*

MELISSA A. CILLEY, A.B., M.A.  
University of New Hampshire, University of Wisconsin  
*Assistant Professor*

## DEPARTMENT OF GREEK

CATHERINE TORRANCE, A.B., M.A., PH.D.  
University of Chicago  
*Professor*

MARTHA STANSFIELD, A.B., M.A., PH.D.  
Agnes Scott College, University of Chicago  
*Associate Professor*

LOIS COMBS, A.B., M.A., PH.D.  
Agnes Scott College, New York University  
*Instructor*



Davidson

Harn  
Torrance



## DEPARTMENT OF HISTORY

PHILIP DAVIDSON, JR., B.S., M.A., PH.D.  
University of Mississippi, University of Chicago  
*Professor*

ELIZABETH F. JACKSON, A.B., M.A., PH.D.  
Wellesley College, University of Pennsylvania  
*Associate Professor*

FLORENCE E. SMITH, A.B., M.A., PH.D.  
Westhampton College, University of Chicago  
*Assistant Professor*  
*Department of Art History*

LOUISE GARLAND LEWIS  
University of Chicago, University of Paris, Art Institute  
Chicago, Academie Lulian, Ecole Delacluse  
*Professor of Art History*

# Faculty

## DEPARTMENT OF LATIN

LILLIAN S. SMITH, M.A., PH.D.  
Syracuse University, Cornell University  
*Professor*

CATHERINE TORRANCE, A.B., M.A., PH.D.  
University of Chicago  
*Professor*

MARTHA STANSFIELD, A.B., M.A., PH.D.  
Agnes Scott College, University of Chicago  
*Associate Professor*

LOIS COMBS, A.B., M.A., PH.D.  
Agnes Scott College, New York University  
*Instructor*

## DEPARTMENT OF MATHEMATICS

HENRY A. ROBINSON, B.S., C.E., M.A., PH.D.  
University of Georgia, Johns Hopkins University  
*Professor*

LESLIE J. GAYLORD, A.B., M.S.  
Lake Erie College, University of Chicago  
*Assistant Professor*

## DEPARTMENT OF MUSIC

CHRISTIAN W. DIECKMANN, F.A.G.O.  
*Professor*



Smith  
Robinson

Dieckmann

LEWIS H. JOHNSON  
Student of William Nelson Burritt, New York; Alexander  
Heinneman, Berlin; Arthur J. Hubbard, Boston  
*Voice*

GUSSIE O'NEAL JOHNSON  
Certificate in Voice and Piano, Agnes Scott College  
*Assistant in Voice*

AGNES ADAMS STOKES, A.B.  
Agnes Scott College, Graduate of Atlanta Conservatory  
of Music  
*Violin*

EDA E. BARTHOLOMEW  
Royal Conservatory, Leipzig  
*Piano*



# Faculty

## DEPARTMENT OF PHYSICS AND ASTRONOMY

SCHUYLER M. CHRISTIAN, B.S., M.S., M.A., PH.D.  
Emory University, Harvard University  
*Professor*

## DEPARTMENT OF PHILOSOPHY AND EDUCATION

SAMUEL GUERRY STUKES, A.B., M.A., B.D.  
Davidson College, Princeton University, Princeton Seminary  
*Professor*

EMILY S. DEXTER, A.B., M.A., PH.D.  
Ripon College, University of Wisconsin  
*Associate Professor*

KATHERINE T. OMWAKE, A.B., M.A., PH.D.  
George Washington University  
*Assistant Professor*

Hanley



Christian  
Stukes

## LIBRARY

EDNA RUTH HANLEY, A.B., A.B.L.S.  
Bluffton College, University of Michigan  
*Librarian*

GWENDELIN MILLER, B.S., A.B.S.L.  
University of Michigan  
*Assistant Librarian*

ADA PAGE FOOTE, A.B., A.B.L.S.  
Mississippi State College for Women, Emory University  
*Assistant Librarian*

MILDRED HOOTEN, A.B.  
Agnes Scott College  
*Assistant Librarian*

## Faculty

### DEPARTMENT OF PHYSICAL EDUCATION

MARY F. SWEET, M.D., F.A.C.P.  
Syracuse University, New England Hospital, Boston  
*Professor of Hygiene*

LLEWELLYN WILBURN, A.B., M.A.  
Agnes Scott College, Columbia University  
*Associate Professor of Physical Education*

HARRIET HAYNES, A.B., M.A.  
Randolph-Macon Woman's College, Columbia University  
*Assistant Professor of Physical Education*  
*Assistant Dean*



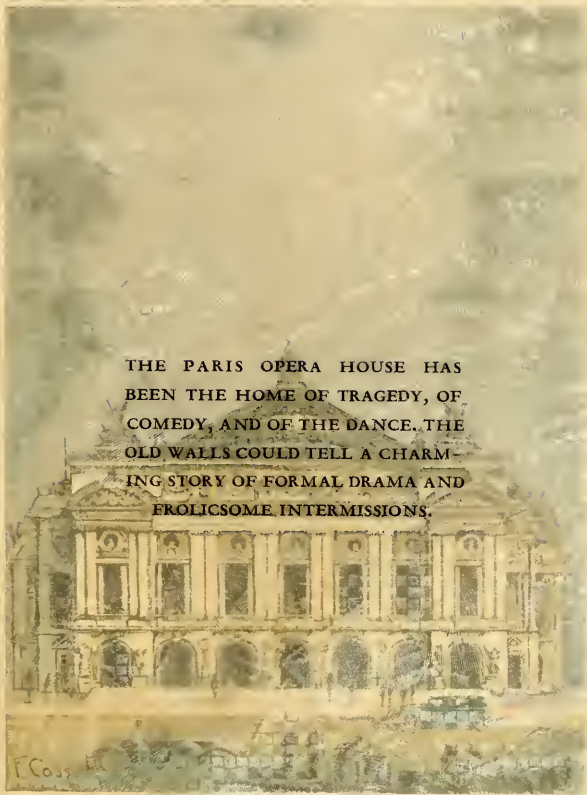
Sweet  
Wilburn

CARRIE SCANDRETT, A.B.  
Agnes Scott College  
*Secretary to the Dean*

ANDREWENA ROBINSON, A.B.  
Agnes Scott College



Scandrett



# *ART OF VARIETY*



## Faculty

### DEPARTMENT OF PHYSICAL EDUCATION

MARY F. SWEET, M.D., F.A.C.P.

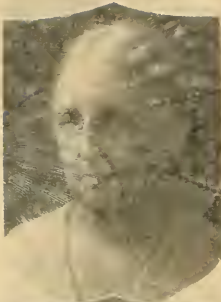
Syracuse University, New England Hospital, Boston  
*Professor of Hygiene*

LITWELLYN WILBURN, A.B., M.A.

Agnes Scott College, Columbia University  
*Associate Professor of Physical Education*

HARRIET HAYNES, A.B., M.A.

Randolph-Macon Woman's College, Columbia University  
*Assistant Professor of Physical Education*



Sweet  
Wilburn

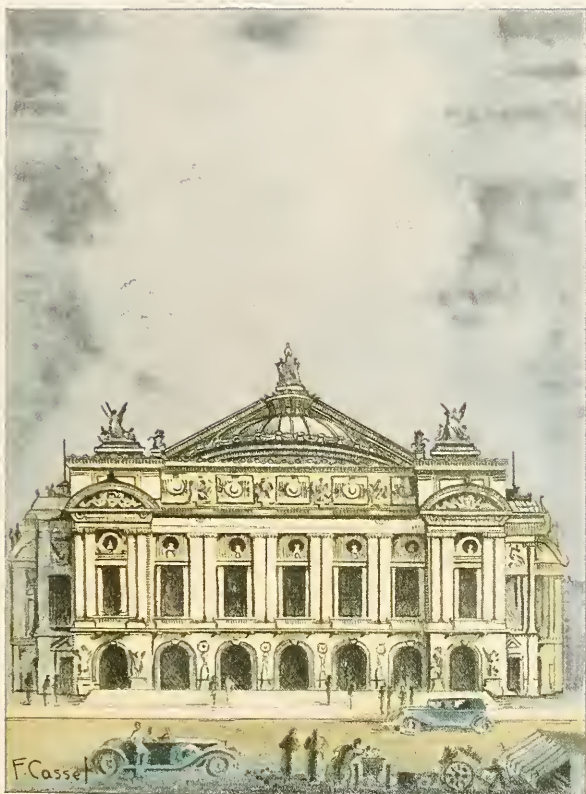
Scandrett

CARRIE SCANDRETT, A.B.  
Agnes Scott College  
*Secretary to the Dean*

ANDREW NA ROBINSON, A.B.  
Agnes Scott College



ART OF VARIETY







## Campus Scenes

*Winter callers.*

*Winter splendor.*

*Our Monday morning array.*

*Tennis action!*



*Back and ground.*

*Paging Hondini!*

*The way of all students.*

*Just looking around.*

*Driving right back out again.*



## Campus Frolics

*Some bicycle enthusiasts.*

*Love me, love my mule.*

*All raked up!*

*Pensive SYCG's.*

*Off to Atlanta!*



*Well, as I was saying, I'm fire CHIEF.*

*I'm just fooling this time.*

*Through the tunnel and to Big Dec.*

*And some place to go—Cotillion tea dance.*

*At the Thanksgiving gala hop.*



## The Faculty at Ease

*Miss Alexander stops to chat.*

*Miss Hale does not mind stopping  
—thanks.*

*Dr. Davidson, "Hey, make it a love  
set—Brrrrrrr-rr."*

*Miss Haynes and Mr. Cunningham,  
our spectators.*

*Dr. and Mrs. Davidson pose pleasantly.  
Dr. McCain in "silbouctte."*



*Dr. Sweet tuning in.*

*Mr. Holt, "Now for that golf game."*

*Miss Wilbun is just one of the team, too.*

*"A full house and I'm bappy," says Nurse  
Daugberty.*

*Miss Lancy and Miss Hale like exhibition  
games, too.*





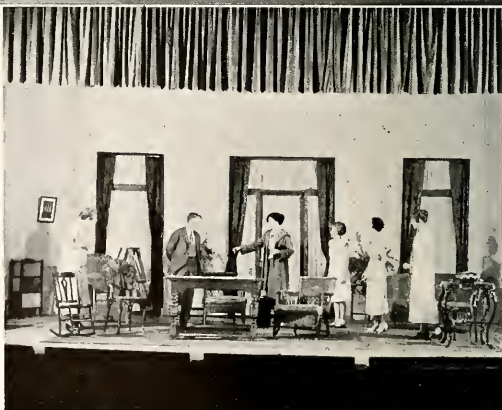
## Blackfriar Presentations

*Scenes from Noel Coward's  
HAY FEVER*

*Given November 24th and 25th,  
1933.*



*Scenes from Juliet W. Thompson's  
ONCE THERE WAS A PRINCESS .  
Given March 9th and 10th, 1934.*



# Sophomore-Freshman Hostilities

October 14, 1933

SOPHZ OF OZ

Presented by the Sophomore Class.

Cast

Glinda, Good-Guardian of Ozma

The Tin Woodman

Scraps Scarecrow Ella.

Professor H. M. Wogglebug (H. M.—Highly  
Magnified)

Tiktok

Jack Pumpkinhead

Ozma, Princess of Oz.

Inman, Wicked Witch of the West.



*There was an end to the hostilities—a party  
and a pledge!*

**SHE CAME, HE SAW, SHE CONQUERED**

Presented by the Freshman Class.

Cast

Fresberella

Seniora

Sophia

Sopbromia

Fairy Sponsor

Prince of Wails.



**Little Girl Day**  
November 3, 1933

*Needles pins, friends forever.*  
*Splash!*

*All clean and good for Mother.*  
*Mother's angels.*



*Senior imps.*

*My dolly.*

*Fishing—for a diploma?*



## Investiture

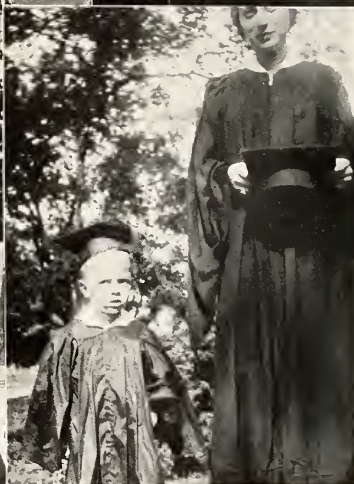
November 4, 1933

*Traditional dignity and symbolism.*

*Your turn soon!*

*How did you do it?*

*The impressive moment.*



*They think they are swell!*

*"No fooling, I'm a big shot."*

*After investiture—a little demure—?*





Founder's Day  
February 22, 1934

*The minuet.*

*A courtesy.*

*Benjamin Franklin and Betsy Ross.*



*Danny Boone trying to see his way out.*

*George and Martha Washington.*

*Step, step, bow.*



# A Spring Day at Agnes Scott

*First call to sleepy heads.*

*Loitering to class.*

*Sunning the book.*

*Ready for a spin!*



*Just a picnic lunch.*

*That afternoon stroll.*

*What a shower—?*

*Getting the first tints of summer.*

*Ella wants the date to be on time.*

# Mikado

May 12 and 25

*The Mikado* was presented by the Agnes Scott Glee Club under the direction of Mr. Johnson. A group of young men from Atlanta and Decatur assisted in the presentation.

## CAST

*The Mikado* . . . JEAN TRABOR  
*Yum Yum* . . . BETTY LOU HOUCK  
*Nanki Poo* . . . HARRY HOEY  
*Katiska* . . . GUSSIE ROSE RIDDLE



*Ko Ko* . . . . . DICK SMOOT  
*Poo Bab* . . . . . JIM BAGWELL  
*Pish Tush* . . . . . CHARLIE WHITE  
*Pitti Sing* . . . . . SHIRLEY CHRISTAIN  
*Peep Bo* . . . . . ALICE CHAMLEE





T' Ahsk `er  
May 5, 1934

Misrepresented by  
The Senioropolitan Opera Company.

Demy Tassy.



*Scorpion wooing Demy Tassy.*

*Scorpion nabbing Any Lotus.*

*Caviar Ossie stiff fronting the Firing Squad.*



La Fete du Mai  
May 5, 1934

*La Reine et sa Cour.*

*Les Chevaliers Errants.*



*La Reine y la Pucelle  
Aux Lys.*

*La Reine.*



## La Fete du Mai

*Les Jongleurs y  
Les Pastoureaux.*

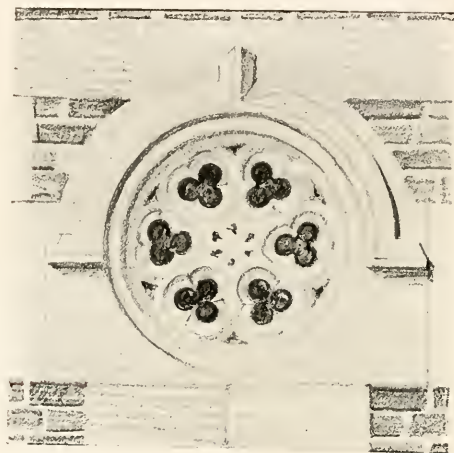
*La Ridee de Bretagne.*



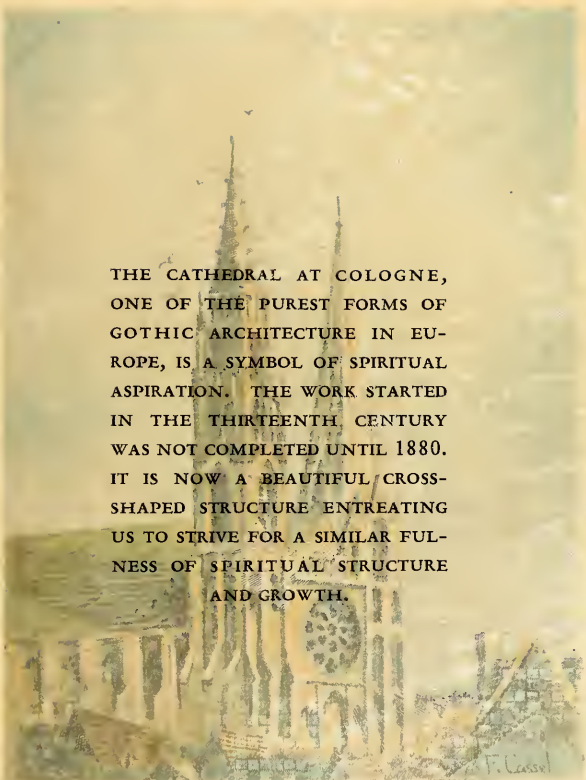
*Les Tresseurs de  
Guirlandes.*

*La Farandole de  
Provence.*









THE CATHEDRAL AT COLOGNE,  
ONE OF THE PUREST FORMS OF  
GOTHIC ARCHITECTURE IN EU-  
ROPE, IS A SYMBOL OF SPIRITUAL  
ASPIRATION. THE WORK STARTED  
IN THE THIRTEENTH CENTURY  
WAS NOT COMPLETED UNTIL 1880.  
IT IS NOW A BEAUTIFUL CROSS-  
SHAPED STRUCTURE ENTREATING  
US TO STRIVE FOR A SIMILAR FUL-  
NESS OF SPIRITUAL STRUCTURE  
AND GROWTH.

## *ART OF GROWTH*

THE CATHEDRAL AT COLOGNE,  
ONE OF THE PUREST FORMS OF  
GOTHIC ARCHITECTURE IN EUROPE,  
IS A SYMBOL OF SPIRITUAL  
ASPIRATION. THE WORK STARTED  
IN THE THIRTEENTH CENTURY,  
WAS NOT COMPLETED UNTIL 1880.  
IT IS NOW A BEAUTIFUL CROSS-  
SHAPED STRUCTURE ENTREATING  
US TO STRIVE FOR A SIMILAR PUR-  
NESS OF SPIRITUAL STRUCTURE  
AND GROWTH.

ART OF GROWTH







THE CARDINAL

# OFFICERS

## Senior Officers



LOUISE SCHUESSLER  
*Vice-President*



ISABEL LOWRANCE  
*Secretary*

ROSSIE RITCHIE  
*President*



## Junior Officers

LEONORA SPENSER

*Vice-President*



AMY UNDERWOOD

*Secretary*



VELLA MARIE BEHM

*President*



## Sophomore Officers



CARRIE PHINNEY LATIMER

*Vice-President*



HELEN FORD

*Secretary*

ALICE MCCALLIE

*President*



# Freshman Officers

KATHRYN BOWEN  
*Vice-President*



KATHERINE PRINTUP  
*Secretary*



ISABEL MCCAIN  
*President*

## Faculty Advisers



DR. FLORENCE SMITH



MISS LESLIE GAYLORD

*Mascot*  
HENRY VALERIE HAYES





THE ARCHBISHOP

# SENIORS



FRANCES ADAIR  
Atlanta, Georgia  
*English*



MARY AMES  
Decatur, Georgia  
*English*

SARAH AUSTIN  
Dunwoody, Georgia  
*History*



SEP 18 1925



ALOE RISSE BARRON  
Atlanta, Georgia  
*History*



HELEN BASHINSKI  
Dublin, Georgia  
*Chemistry*



URSULA BOESE  
Berlin, Germany  
*History*



HELEN BOYD  
Charlotte, North Carolina  
*History*



ALMA BROHARD  
Grafton, North Carolina  
*History*

LAURA BUIST  
Greenville, South Carolina  
*English*



DOROTHY CASSEL  
Decatur, Georgia  
*English*



IONA CATER  
Alexander City, Alabama  
*Zoology and Psychology*



NELLE CHAMLEE  
Canton, Georgia  
*Chemistry*



PAULINE CURETON  
Moreland, Georgia  
*Zoology*

DOROTHY DICKSON  
Anderson, South Carolina  
*Psychology*

MARTHA ELLIOT  
Marietta, Georgia  
*French and English*



MARTHA PLANT ELLIS  
Macon, Georgia  
*French*



MARTHA ENGLAND  
Atlanta, Georgia  
*French*



VIRGINIA FISHER  
Decatur, Georgia  
*Psychology*



MARGARET FRIEND  
Petersburg, Virginia  
*History*



PAULINE GORDON  
Chicago, Illinois  
*Mathematics and Chemistry*

Lucy Goss  
Decatur, Georgia  
*Chemistry*





SYBIL GRANT  
Atlanta, Georgia  
*History*



MARY GRIST  
Blakely, Georgia  
*English*



ALMA GROVES  
Byromville, Georgia  
*History*



ELINOR HAMILTON  
Dalton, Georgia  
*History*



MARY HAMILTON  
Dalton, Georgia  
*Mathematics and English*

ELIZABETH HARBISON  
Kansas City, Missouri  
*Psychology*



LAURA HART  
Decatur, Georgia  
*History*



ELAINE HECKLE  
Atlanta, Georgia  
*Psychology*



LILLIAN HERRING  
Greenville, Georgia  
*English*



ELIZABETH HICKSON  
Cheraw, South Carolina  
*Latin*



CLAIRE IVY  
West Point, Mississippi  
*Zoology*

MARY JACKSON  
Decatur, Georgia  
*Latin*



ELEANOR JOHNSON  
McAlpin, West Virginia  
*Mathematics*



ELIZABETH JOHNSON  
Decatur, Georgia  
*Chemistry*



MARGUERITE JONES  
Atlanta, Georgia  
*Chemistry and Mathematics*



EDITH KENDRICK  
Atlanta, Georgia  
*Psychology*



JANIE LAPSLEY  
Roanoke, Virginia  
*Physics and Mathematics*

RUTH LONG  
Atlanta, Georgia  
*Zoology*





ISABEL LOWRANCE  
Atlanta, Georgia  
*History*



JANE MACMILLAN  
Atlanta, Georgia  
*Psychology*



LOUISE MCCAIN  
Decatur, Georgia  
*Latin*



MARY McDONALD  
Brunswick, Georgia  
*English and French*



CARRIE LENA McMULLEN  
Hangchow, China  
*Psychology*

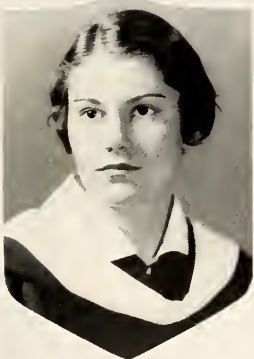
KATHRYN MANESS  
Atlanta, Georgia  
*Psychology and French*



MARGARET MASSIE  
Lexington, Kentucky  
*English*



MARION MATHEWS  
Atlanta, Georgia  
*Chemistry*



RUTH MOORE  
Atlanta, Georgia  
*English*



SARA MOORE  
Decatur, Georgia  
*English*



JOSEPHINE MORTON  
Atlanta, Georgia  
*Mathematics*

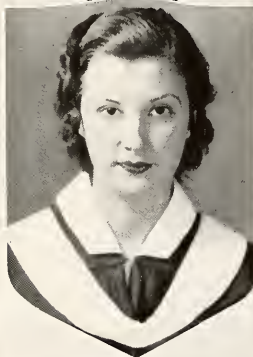
MARTHA NORMAN  
West Point, Georgia  
*Chemistry*



FRANCES O'BRIEN  
Ridley Park, Pennsylvania  
*Botany*



LOLA PHILLIPS  
Atlanta, Georgia  
*English*



DOROTHY POTTS  
Atlanta, Georgia  
*Bible*





GLADYS PRATT  
Atlanta, Georgia  
*Mathematics*

FLORENCE PRESTON  
Soonchun, Korea  
*Chemistry*

VIRGINIA PRETTYMAN  
Summerville, South Carolina  
*English*



SEN I 1924

CHARLOTTE REID  
Charleston, West Virginia  
*English*



GUSSIE ROSE RIDDLE  
Athens, Tennessee  
*Economics and Sociology*



ROSSIE RITCHIE  
Birmingham, Alabama  
*History*



MARGARET ROGERS  
Fort Smith, Arkansas  
*English*



CAROLYN RUSSELL  
Winder, Georgia  
*Psychology*

LOUISE SCHUESSLER  
Columbus, Georgia  
*History*



1911

MARY LOUISE SCHUMAN  
Savannah, Georgia  
*Chemistry*



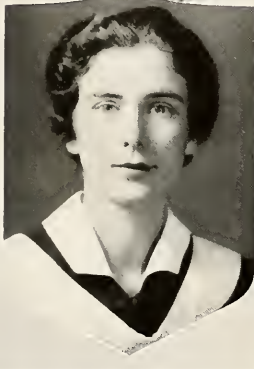
RUTH SHIPPEY  
Atlanta, Georgia  
*Psychology*



ROSA SHUEY  
Atlanta, Georgia  
*Psychology*



MARTHA SKEEN  
Decatur, Georgia  
*English*



MARY SLOAN  
Atlanta, Georgia  
*Mathematics*

RUDENE TAFFAR  
Decatur, Georgia  
*English*





MABEL TALMAGE  
Atlanta, Georgia  
*English*



MARJORIE TINDALL  
Atlanta, Georgia  
*History*



TENNESSEE TIPTON  
Tiptonville, Tennessee  
*Mathematics*



DOROTHY WALKER  
Ripley, Tennessee  
*Latin*



CAROLINE WATERMAN  
Jacksonville, Florida  
*History*

KATHERINE WHITE  
Atlanta, Georgia  
*Latin*



ISABELLA WILSON  
Lincolnton, North Carolina  
*Latin*



ELIZABETH WINN  
Greenville, South Carolina  
*English*



MARY WINTERBOTTOM  
Atlanta, Georgia  
*Mathematics and Chemistry*



JOHNNIE MAE YORK  
Atlanta, Georgia  
*Zoology*



FLORA YOUNG  
Anderson, South Carolina  
*English*



THE PRIEST

# JUNIORS



MEMBERS



MARIE ADAMS

MARY ADAMS



ELIZABETH ALEXANDER

MARTHA ALLEN



MARY VIRGINIA ALLEN

VELLA MARIE BEHM



MARY BOGGS

GLADYS BURNS

VIRGINIA BYERS

MARIAN CALHOUN



TRELLIS CARMICHAEL

FRANCES CASSEL



JANE CASSELS

CAROLYN COLE



EVA CONSTANTINE

SARAH COOK



ROSALYN CRISPIN

SARA DAVIS



MARY LILLIAN DEASON

HELEN DERRICK



CAROLINE DICKSON

MAE DULS



ALICE DUNBAR

FIDESAH EDWARDS



FRANCES ESPY

MARY JANE EVANS



BETTY FOUNTAIN

MARGARET GOINS



MARY GREEN

CAROL GRIFFIN



ANN SCOTT HARMAN

ELIZABETH HEATON

KATHERINE HERTZKA

BETTY LOU HOUCK



ANNA HUMBER

MARY HUTCHINSON



JOSEPHINE JENNINGS

MARY LOUISE LATIMER



CAROLINE LONG

FRANCES McCALLA



JULE McCLATCHEY

IDA LOIS McDANIEL



MARGUERITE MORRIS

CLARA MORRISON



VIRGINIA NELSON

ALBERTA PALMOUR



NINA PARKE

NELL PATTILLO

ALPHABETICALLY



EVA POLIAKOFF

VERA FRANCES PRUET



MADELINE RACE

MARTHA REDWINE



LOICE RICHARDS

MARTHA ANN RODGERS



MARGARET ROBINS

DOROTHY ROBINSON

ISABEL SHIPLEY

ALSINE SHUTZE



MARIE SIMPSON

SUZANNE SMITH





LEONORA SPENSER

MARY ELIZABETH SQUIRES

MARGARET STOKEY

MARY SUMMERS

CATHERINE SWARINGEN

SARAH THRASHER

BUFORD TINDER

SUSAN TURNER



AMY UNDERWOOD

MARGARET WATERMAN

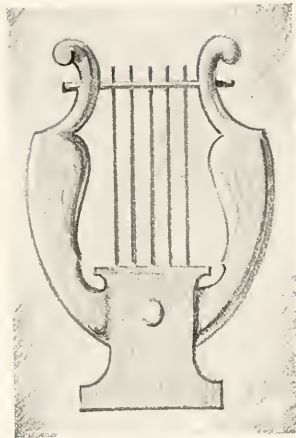
LAURA WHITNER

HESTER ANN WITHERS

JACQUELINE WOOLFOLK

ELIZABETH YOUNG







THE MONK

# SOPHOMORES

SENIORS



LULU AMES

LENA ARMSTRONG



DORIS BATSELL

ANNA LILLIAN BERRY



DOROTHEA BLACKSHEAR

CORRIE BLAIR



IDA BUIST

MERIEL BULL

REBECCA CASHION

ALICE CHAMLEE



SHIRLEY CHRISTIAN

MILDRED CLARK



CAROLYN CLEMENTS

ANN COFFEE



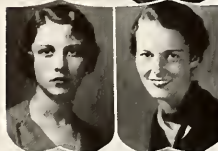
MILDRED COHEN

BAZALYN COLEY



VIRGINIA COONS

MARGARET COOPER



NAOMI COOPER

MARTHA CRENSHAW



CATHERINE CUNNINGHAM

MARTHA LOUISE CUNNINGHAM



SARA CURETON

ELLEN DAVIS



MARIAN DERRICK

MARTHA EDMONDS



HELEN FORD

ELIZABETH FORMAN





ROSA FROM

VIRGINIA GAINES



JANET GRAY

HELEN HANDTE



RUBY HUTTON

FRANCES JAMES



ETHELYN JOHNSON

ORISUE JONES

SARAH JONES

AUGUSTA KING



RUTH KING

ELLA KIRVEN



GRETCHEN KLEYBECKER

CARRIE PHINNEY LATIMER



SARA LAWRENCE

GEORGANNE LEWIS



OVIDA LONG

DOROTHY LYONS



ALICE MCCALLIE

LENNA SUE MCCLURE



FRANCES MCCULLY

SARAH FRANCES McDONALD



DEAN MCKOIN

SALLIE MCREE



ANN MARTIN

FRANCES MILLER



ROSA MILLER

ELIZABETH MOORE

MEMORIALS



SARAH NICHOLS

JANIE NORRIS



MYRA O'NEAL

HARRIET PECK



MARY POTTS

HELEN RAMSEY



ADELINE ROUNTREE

EMILY ROWE

LAVINIA SCOTT

MARY SNOW

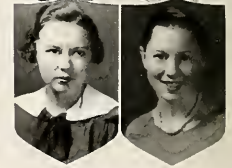
SARAH SPENCER

HELEN STANLEY



MARY RICHARDSON

MARY GRAY ROGERS



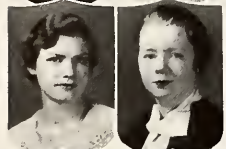
MARY MARGARET STOWE

MARIAN TALMAGE



JANE THOMAS

LOUISE TIPTON



SARA TOMLINSON

MARIE TOWNSEND



VIVIENNE TRICE

SARAH TURNER



VIRGINIA TURNER

MARY VINES



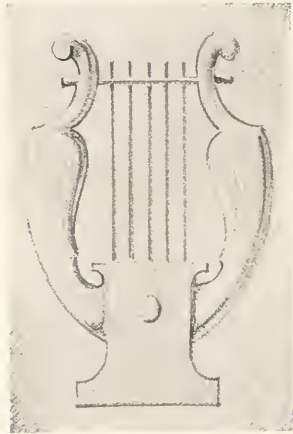
MARY WALKER

NELL WHITE



REBECCA WHITLEY

SARAH CATHERINE WOOD







THE CHOIR BOY

# FRESHMEN

YOUNG LADIES



ELOISA ALEXANDER  
 ELIZABETH ALLISON  
 MARGARET ALSTON



NETTIE MAE AUSTIN  
 ANNE BAKER



FRANCES BALKCOM  
 LUCILE BARNETT  
 FRANCES BELFORD



KATHERINE BENNETT  
 KATHRYN BOWEN



MARY BUCHHOLZ  
 DOROTHY CABANISS  
 LUCILLE CAIRNS

VIRGINIA CALDWELL  
 FRANCES CARY  
 HELEN CHANDLER

CORNELIA CHRISTIE  
 MEREDETH CRICKMER



KATHLEEN DANIEL

LUCILE DENNISON

HELEN DUPREE



THYRZA ELLIS

ELIZABETH ESPY



JANE ESTES

SARA FORRESTER

MICHELLE FURLOW



MARY GARLAND

MARY GILLESPIE



HETTY HARKNESS

FANNIE HARRIS

BARBARA HERTWIG



BARTON JACKSON

MARY JACKSON

DOROTHY JESTER



ELLENDER JOHNSON

MARTHA JOHNSON

PRESENTERS



SARAH JOHNSON

CATHERINE JONES

KATHLEEN JONES



MOLLIE JONES

RACHEL KENNEDY



MARY KING

JEAN KIRKPATRICK

MARY KNEALE



MARTHA SUE LANEY

FLORENCE LASSETER



DOROTHY LEE

JANE LEWIS

VIVIENNE LONG

ISABEL McCAIN

FRANCES McDONALD

ELIZABETH MCKEE

MARY MALONE

JANE MATTHEWS



KATHERINE MAXWELL  
NANCY MOORER  
WITA MORELAND



ELIZABETH MORROW  
ORA MUSE



MARY ALICE NEWTON  
ROSE NORTHCROSS  
ELLEN O'DONNELL



FRANCES PARIS  
ELIZABETH PERRIN



MARGARET PITNER  
VIRGINIA POPLIN  
LOUISE PREAS



KATHERINE PRINTUP  
HELEN RAYZOR  
ISABEL RICHARDSON



VIRGINIA SAULS  
MARJORIE SCOTT





NELL SCOTT

MARIE STALKER

FRANCES STEELE



LAURA STEELE

MARY STEVENS



HELEN SULLIVAN

MARTHA SUMMERS

ALICE TAYLOR



JULIA THING

MARY JANE TIGERT



MILDRED TILLY

CHRYSANTHY TUNTAS

MEREDITH TURNER

GLADYS VALLEBUONA

MARY NEIL VENTRESS

ANN WALKER

CARMENE WALLACE

KATHRYN WALLACE



MARGARET WATSON

LILLY WEEKS

ROSA WILDER

BETTY WILLIS

FRANCES WILSON

DIXIE WOOLFORD



JANE BLICK

MARY CORNELY

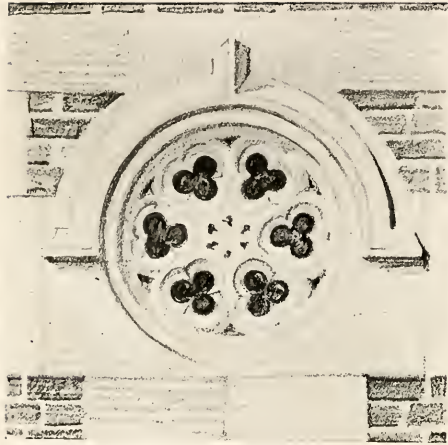
LOUISE JORDAN

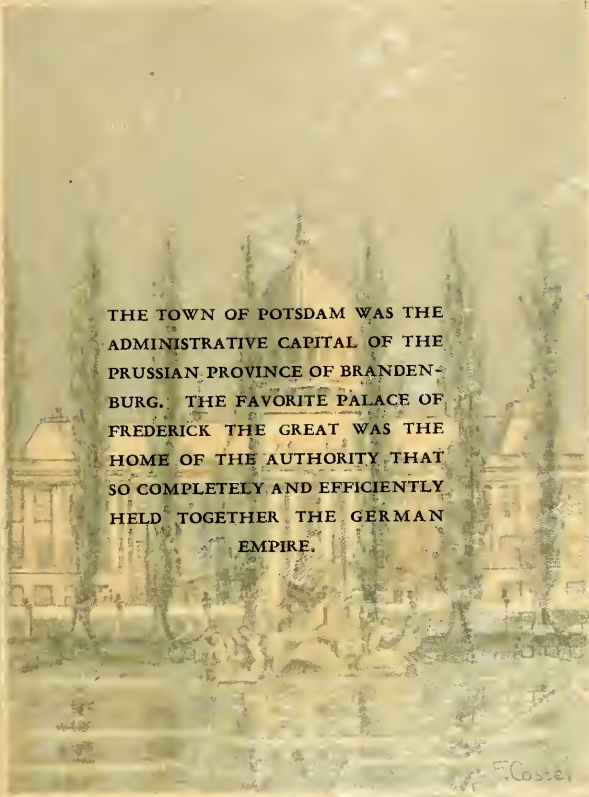
GERTRUDE ASKEW

SARA FRANCES ESTES

ELENORE GULLION







THE TOWN OF POTSDAM WAS THE  
ADMINISTRATIVE CAPITAL OF THE  
PRUSSIAN PROVINCE OF BRANDEN-  
BURG. THE FAVORITE PALACE OF  
FREDERICK THE GREAT WAS THE  
HOME OF THE AUTHORITY THAT  
SO COMPLETELY AND EFFICIENTLY  
HELD TOGETHER THE GERMAN  
EMPIRE.

# ART OF ORGANIZATION

THE TOWN OF POTSDAM WAS THE  
ADMINISTRATIVE CAPITAL OF THE  
PRUSSIAN PROVINCE OF BRANDEN-  
BURG. THE FAVORITE PALACE OF  
FREDERICK THE GREAT WAS THE  
HOME OF THE AUTHORITY THAT  
SO COMPLETELY AND EFFICIENTLY  
HELD TOGETHER THE GERMAN  
EMPIRE.

# ART OF ORGANIZATION









## PUBLICATIONS



THE CUP AWARDED BY PHOTO-  
PROCESS COMPANY

### Basis of Award

ORIGINALITY

ART WORK

MAKE-UP

PAGE BALANCING

DEVELOPMENT OF THEME

FINANCING

The SILHOUETTE has won permanent possession of this cup given by Photo-Process Company awarded in recognition of the All-American rating won by THE SILHOUETTE, 1931, 1932, 1933. The National Scholastic Press Association judges the rating.

### The Silhouette 1931

SHIRLEY MCPHAUL . . . . . *Editor*

MARTHA TOWER . . . . . *Business Manager*



LINGLE

### The Silhouette 1932

PENELOPE BROWN . . . . . *Editor*

BETTY PEEPLES . . . . . *Business Manager*



BETHEA

### The Silhouette 1933

CAROLINE LINGLE . . . . . *Editor*

JULE BETHEA . . . . . *Business Manager*

The splendid work of these editors and business managers and their high standards which All-American rating indicates is proudly recognized by the staff of THE 1934 SILHOUETTE. We dedicate these pages to them.



## Silhouette

HISTORY: In 1891 SILHOUETTE was first published in collaboration with the *Aurora* as a record of the school year together with the literary work of the students. In 1902 the present publication SILHOUETTE was organized.

### EDITORIAL STAFF

ELINOR HAMILTON . . . *Editor-in-Chief*  
 CAROLINE LONG . . . *Assistant Editor*  
 FRANCES O'BRIEN . . . *Photographic Editor*  
 NINA PARKE . . . *Class Editor*  
 DOROTHY CASSEL . . . *Athletic Editor*  
 CAROLINE WATERMAN . . . *Feature Editor*  
 SHIRLEY CHRISTIAN . . . *Kodak Editor*  
 MARGARET ROGERS . . . *Humor Editor*  
 TRELIS CARMICHAEL . . . *Faculty Editor*  
 CAROLYNE CLEMENTS . . . *Associate Editor*  
 MARGARET WATERMAN . . . *Associate Editor*  
 ROSA MILLER . . . *Associate Editor*



Long	O'Brien	Parke
	Cassel	C. Waterman
Christian	Rogers	Carmichael
Clements	M. Waterman	Miller

Hamilton



## Silhouette

PURPOSE: The same as the first Editorial Staff: "To cast upon these pages a silhouette of our life at Agnes Scott—an existence itself as transient and flitting as firelight shadows."

### BUSINESS STAFF

PAULINE GORDON . . . . *Business Manager*  
 BETTY LOU HOUCK . *Asst. Business Manager*

GEORGANNE LEWIS  
 ELLEN DAVIS

### ART STAFF

FRANCES CASSEL . . . . . *Art Editor*

BETTY FOUNTAIN  
 SARAH SPENCER  
 ADELINE ROUNTREE

Gordon



Houck

Lewis

Davis

Cassel

Fountain

Spencer

Rountree

## The Aurora

**HISTORY:** In the early days it was a year-book, including all phases of activities. The *Aurora* was changed into a publication by the literary societies when the *SILHOUETTE* became an annual publication. Gradually it became a quarterly containing only literary efforts, such as poetry, short stories, essays and back reviews.

### EDITORIAL STAFF

VIRGINIA PRETTYMAN . . . *Editor-in-Chief*  
 ANNA HUMBER . . . . . *Assistant Editor*  
 DORIS BATSELL . . . . . *Associate Editor*  
 MARY BOGGS . . . . . *Associate Editor*  
 FRANCES ESPY . . . . . *Poetry Editor*



Humber  
 Boggs

Batsell  
 Espy

Prettyman



## The Aurora

PURPOSE: "To present the highest literary efforts of the students and to create an appreciation of the best writing on the campus."

KEYNOTE: Development.

### BUSINESS STAFF

ELIZABETH HICKSON . . . *Business Manager*

ISABEL LOWRANCE . . . *Circulation Manager*

ANN MARTIN . . . . . *Exchange Editor*



Hickson



Lowrance

Martin



Richards	Elliott	Stowe
	Crispin	Ames
Shipley	O'Brien	Ellis
	Batsell	Moore
Lowrance		Hickson

## Agonistic

HISTORY: The *Agonistic* was begun by the Junior Class of 1916 and was the special interest and property of that class until the paper became so popular that the campus adopted it to express their opinions.

### EDITORIAL STAFF

MARY HAMILTON . . . . . *Editor-in-Chief*  
 LOICE RICHARDS . . . . . *Assistant Editor*  
 MARTHA ELLIOTT . . . . . *Feature Editor*  
 MARY MARGARET STOWE . . . . . *Society Editor*  
 ROSALYN CRISPIN . . . . . *Exchange Editor*  
 LULU AMES . . . . . *Exchange Editor*  
 ISABEL SHIPLEY . . . . . *Alumnae Editor*  
 FRANCES O'BRIEN . . . . . *Sports Editor*  
 MARTHA PLANT ELLIS . . . . . *Joke Editor*  
 DORIS BATSELL . . . . . *Giddy Gossip*  
 ELIZABETH MOORE . . . . . *Club Editor*  
 ISABEL LOWRANCE . . . . . *Key to Current History*  
 ELIZABETH HICKSON . . . . . *Book Bits*

Hamilton





## Agonistic

**PURPOSE:** To present campus news in as accurate and as interesting a manner as possible; to encourage the growth of true journalism among the students.

**YEAR'S WORK:** To stimulate interest in the work a class contest is held each year and a cup is awarded to the winner.

### BUSINESS STAFF

- MARY AMES . . . . . *Business Manager*  
 NELL PATILLO . *Assistant Business Manager*  
 MARGARET ROGERS . . . . . *Make-up Editor*  
 EVA CONSTANTINE, *Assistant Make-up Editor*  
 ALMA BROHARD . . . . . *Circulation Manager*  
 JACQUELINE WOOLFOLK  
*Assistant Circulation Manager*  
 MYRA O'NEAL  
*Day Student Circulation Manager*  
 ELIZABETH THRASHER  
*Day Student Circulation Manager*

Ames



Pattillo

Rogers

Constantine

Brohard

Woolfolk

O'Neal

Thrasher



Freshman Edition

Sign Up

# The Agonistic

FRESHMAN EDITION

For Gym

DAMES SOCIETY OF THE S. M. C. A., WASHINGTON, FEBRUARY 1934

**Administrative Board Grants Privilege of Non-Chaperonage**

**Black Friars Give Comedy As Next Play**

**BLACK FRIARS' PREVIEW**



**Student Government Develops New Projects From N. S. F. A. Are Announced**

**Church Nominations - Louis Ustermeyer Completes Lecture Series in March**

Student Government: The Executive Board of the Student Government has granted the privilege of non-chaperonage to the members of the Executive Board. The Board also has granted the privilege of non-chaperonage to the members of the Executive Board. The Board also has granted the privilege of non-chaperonage to the members of the Executive Board.

Sign Up

# The Agonistic

FRESHMAN EDITION

For Gym

DAMES SOCIETY OF THE S. M. C. A., WASHINGTON, FEBRUARY 1934

## CHARLOTTE REID ELECTED MAY QUEEN

### MORTAR BOARD MAKES 100 IN NATIONAL TEST

Members of Agnes Scott      A. S. C. Olney, Vice-Founder's Day      Executive Member To

Junior Edition

# The Agonistic

JUNIOR EDITION

Junior Edition

DAMES SOCIETY OF THE S. M. C. A., WASHINGTON, FEBRUARY 1934

**Student Government Develops New Projects From N. S. F. A. Are Announced**

**Church Nominations - Louis Ustermeyer Completes Lecture Series in March**



**Student Government Develops New Projects From N. S. F. A. Are Announced**

**Church Nominations - Louis Ustermeyer Completes Lecture Series in March**

Senior Issue

# The Agonistic

SENIOR ISSUE

Senior Issue

DAMES SOCIETY OF THE S. M. C. A., WASHINGTON, FEBRUARY 1934

**Dr. S. M. Glasgow Conducts Annual Devotional Week - Program Planned - Four New Phi Beta Kappa Members Are Announced**

**Young Men Will Hold Rompage March 10**

**"The Viking" Will Be Given in May**

**Dr. S. M. Glasgow Conducts Annual Devotional Week - Program Planned - Four New Phi Beta Kappa Members Are Announced**

**Young Men Will Hold Rompage March 10**

## The Agonistic Contest

In the annual contest, the Freshman Class issue of the *Agonistic* won the *Agonistic* cup awarded to the class publication exhibiting the finest journalistic principles as judged by a representative of the *Atlanta Constitution*, *Atlanta Journal*, one from the Southern Division of the Associated Press, and a former editor.

### FRESHMAN STAFF

- LAURA STEELE . . . . . Editor  
 KATHRYN BOWEN . . . . . Business Manager

Bowen      Steele





# ORGANIZATIONS

## Student Government Association

### OFFICERS

MARY McDONALD . . . . . *President*

CHARLOTTE REID . . . . . *Vice-President*

ALBERTA PALMOUR . . . . . *Secretary*

MARY GREEN . . . . . *Treasurer*

ISABELLA WILSON, *House President of Rebecca*

KATHERYN MANESS, *House President of Main*

HELEN BOYD . . . *House President of Inman*



Reid

Palmour

Green

Wilson

Maness

Boyd

McDonald



# Student Government Association

HISTORY: The Student Government Association was begun in 1906, the first year of the college's existence, but with very limited influence. It is now closely associated with every phase of campus activity, having grown from four officers into a large executive committee.

## REPRESENTATIVES

- CAROLYN RUSSELL . *Senior Representative*  
 MARY BOGGS . . . *Junior Representative*  
 MARY JANE EVANS . *Junior Representative*  
 DEAN MCKOIN . *Sophomore Representative*  
 SARAH CATHERINE WOOD  
                         *Sophomore Representative*  
 DOROTHY CASSEL, *Day Student Representative*  
 CARRIE LENA McMULLEN, *Ex-Officio Member*



Russell

Boggs

Evans

McKoin

Wood

Cassel

McMullen





McCain

Dickson

Alexander

Redwine

Winn

Spencer

## Y. W. C. A.

HISTORY: In the same year that the college was founded, the Y. W. C. A. was organized on the campus, and received a charter as a member of the National Y. W. C. A.

### OFFICERS

CARRIE LENA McMULLEN . . . . . *President*  
 LOUISE McCAIN . . . . . *Vice-President*  
 CAROLINE DICKSON . . . . . *Secretary*  
 ELIZABETH ALEXANDER . . . . . *Treasurer*  
 MARTHA REDWINE, *Social Service Committee*  
 ELIZABETH WINN . . . *Program Committee*  
 SARAH SPENCER . . . *Publicity Committee*

McMullen



# Y. W. C. A.

PURPOSE: To promote ideals of Christian living in students which will remain with them in later years.

## OFFICERS

GUSSIE ROSE RIDDLE, *Inter-Racial Committee*

JACQUELINE WOOLFOLK . *Social Department*

FRANCES JAMES, *Day Student Representative*

VIRGINIA FISHER . . . *Industrial Committee*

RUBY HUTTON . . . . *Music Committee*

FLORENCE PRESTON  
*Mission Interest Department*

MARY McDONALD . . . *Ex-Officio Member*



Riddle

Woolfolk

James

Fisher

Hutton

Preston

McDonald







Ames  
Gordon

Friend  
Hamilton

## Mortar Board

**HISTORY:** In 1916 a group of students founded Hoasc, the Agnes Scott honor society. In October, 1931, Hoasc became a member of Mortar Board, the national honor society for women's colleges.

### OFFICERS

- ELIZABETH WINN . . . . . *President*  
 ELINOR HAMILTON . . . . . *Vice-President*  
 LOUISE MCCAIN . . . . . *Secretary*  
 MARGARET FRIEND . . . . . *Treasurer*  
 MARY AMES . . . . . *Quarterly Editor*

Winn



## Mortar Board

PURPOSE: "To recognize those students who have over a period of three years shown that they possess certain worthy qualities; and to unite these students, that together they may render more effective service."

### MEMBERS

MARY HAMILTON

LOUISE McCAIN

CARRIE LENA McMULLEN

MARGARET MASSIE

PAULINE GORDON



Hamilton

McCain

McDonald

McMullen

Massie



## Phi Beta Kappa

HISTORY: The Beta Chapter of Georgia of Phi Beta Kappa was installed at Agnes Scott in 1926.



Gordon  
Mathews

Goss  
Prettyman

### MEMBERS IN FACULTY

DR. JAMES ROSS McCAIN

MISS LILLIAN SMITH

MR. S. G. STUKES

MR. R. B. HOLT

MISS MARY S. MACDOUGALL

MISS ALICE LUCILE ALEXANDER

MR. JAMES M. WRIGHT

MR. GEORGE P. HAYES

MISS CATHERINE TORRANCE

MISS EDITH M. HARN

MR. PHILIP DAVIDSON

MISS EMMA MAY LANEY

MISS MARY WESTALL

MRS. MARGARET WHITTINGTON DAVIS

### MEMBERS

PAULINE GORDON

LUCY GOSS

MARION MATHEWS

VIRGINIA PRETTYMAN



# Honor Roll

PURPOSE: To recognize those students who have attained a high scholastic average during the preceding school year are recognized. The following were honored for their work in 1932-1933.

## CLASS OF 1934

LAURA BUIST  
 PAULINE GORDON  
 LUCY GOSS  
 MARY HAMILTON  
 JANIE LAPSLEY  
 MARION MATHEWS  
 CARRIE LENA McMULLEN  
 VIRGINIA PRETTYMAN

## CLASS OF 1935

MARTHA ALLEN  
 MARY BOGGS  
 ALICE DUNBAR  
 BETTY FOUNTAIN  
 KATHERINE HERTZKA  
 ANNA HUMBER  
 CLARA MORRISON  
 NELL PATTILLO  
 EVA POLIAKOFF  
 ISABEL SHIPLEY  
 AMY UNDERWOOD

## CLASS OF 1936

SHIRLEY CHRISTIAN  
 ETHELYN JOHNSON  
 SARA NICHOLS  
 MARY SNOW  
 MARIE TOWNSEND



Buist	Gordon	Goss	Hamilton
Lapsley	Mathews	McMullen	Prettyman
Allen	Boggs	Dunbar	Fountain
Hertzka	Humber	Morrison	Pattillo
Poliakoff	Shipley	Underwood	Christian
Johnson	Nichols	Snow	Townsend

## Lecture Association

PURPOSE: To bring to Agnes Scott the noted personalities of the time. (The procuring of these lecturers have been a means of publicity for the college since the organization of the Association in 1921.)

YEAR'S WORK: This year the series included Dr. Phillip N. Holmes, Miss Isabell Cooper, "Upton Close" and Louis Untermeyer.

### OFFICERS

MARTHA SKEEN . . . *Student Chairman*  
 MARTHA ELLIOT . . . *Student Treasurer*  
 ROSSIE RITCHIE . . . *Senior Representative*  
 MARTHA REDWINE . . . *Junior Representative*  
 NELL WHITE . . . *Sophomore Representative*  
 BETTY FOUNTAIN . . . *Poster Manager*  
 NELLE CHAMLEE . . . *Publicity Manager*  
 NELL PATTILLO . . . *Day Student Representative*



Elliot                      Ritchie  
                                 Redwine  
 White                      Fountain  
                                 Chamlee                      Pattillo

Skeen



## May Day Committee

May Day is a wonderful climax to the school year. The success of the day depends on the months of planning by the committee. A contest is held each fall and the best scenario chosen is presented. The queen and her court are elected in the spring. A large part of the student body participate in May Day; but the committee is responsible for the success of the day.

### OFFICERS

MARY VIRGINIA ALLEN . . . . . *Chairman*  
 VIRGINIA FISHER . . . . . *Business Manager*  
 KATHERINE CUNNINGHAM, *Property Chairman*  
 ELIZABETH JOHNSON . . . . . *Costume Chairman*  
 MARTHA SKEEN . . . . . *Music Chairman*  
 VERA PRUET . . . . . *Scenario Chairman*  
 ANNA HUMBER . . . . . *Dance Chairman*  
 ALICE CHAMLEE . . . . . *Publicity Chairman*  
 SHIRLEY CHRISTAIN . . . . . *Poster Chairman*

Allen



Fisher		Cunningham
Skeen	Johnson	Pruet
Chamlee	Humber	Christain



## Student Officials

Each year in the spring campus election, three student officials are chosen, who, though not on the executive committee, are considered officers of the student body.

ELIZABETH HARBISON . . . *Student Recorder*

LOUISE SCHUESSLER . . . *Student Treasurer*

FIDESAH EDWARDS . . . . . *Fire Chief*



Harbison  
Edwards

Schuessler

## Sponsor Group Leaders

The Sponsor Group was organized this year to try out a new plan of Freshman orientation. Each of the group leaders has a small number of Freshmen to instruct and make very close contact with. The plan has been so successful that Student Government plans to use the same method of orientation.

### LEADERS

FRANCES ADAIR	ANNA HUMBER
E. ALEXANDER	ELIZABETH JOHNSON
SARAH AUSTIN	ISABEL LOWRANCE
VELLA MARIE BEHM	RUTH MOORE
MARY BOGGS	FRANCES MCCALLA
ALMA BROHARD	FRANCES O'BRIEN
NELL CHAMLEE	ALBERTA PALMOUR
CAROLINE DIXON	NELL PATTILLO
ALICE DUNBAR	MARTHA REDWINE
PLANT ELLIS	GUSSIE ROSE RIDDLE
MARY JANE EVANS	LOUISE SCHUESSLER
PAULINE GORDON	MARIE SIMPSON
MARY GREEN	MARY SLOAN
ELIZABETH HARBISON	LEONORA SPENCER
KATHERINE HERTZKA	ISABELLA WILSON
ELIZABETH HICKSON	J. WOOLFOLK

McDonald      Reid



Adair	Alexander	Austin	Behm	Boggs
Brohard	Chamlee	Dixon	Dunbar	
Ellis	Evans	Gordon	Green	Harbison
Hertzka	Hickson	Humber	Johnson	
Lowrance	Moore	McCalla	O'Brien	Palmour
	Pattillo	Redwine	Riddle	Schuessler
Simpson	Sloan	Spencer	Wilson	Woolfolk

# Orchestra

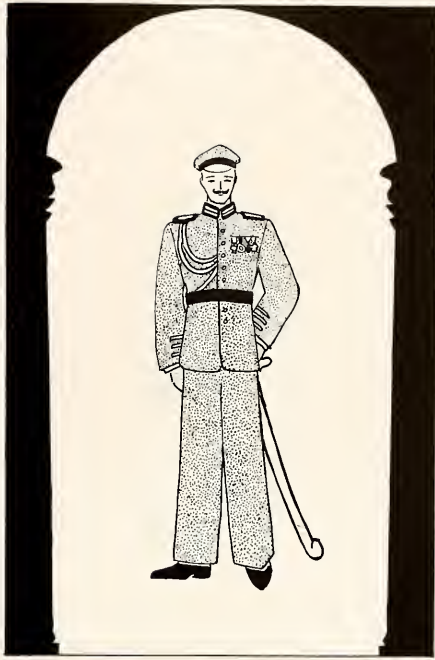


Riddle, Smith, Chamlee, Hutton, Robinson, Kennedy, Parke

The Orchestra has been organized for several years and continues to give entertainment at informal functions in the gymnasium. The most enjoyable feature of their work is the dinner music every two weeks on Wednesday nights. The Orchestra and students appreciate the interest that Miss Smith and Mrs. Robinson have shown in the year's program.

## MEMBERS

- |                               |                  |
|-------------------------------|------------------|
| GUSSIE ROSE RIDDLE . . . . .  | <i>Leader</i>    |
| NELL CHAMLEE . . . . .        | <i>Cello</i>     |
| RUBY HUTTON . . . . .         | <i>Piano</i>     |
| RACHEL KENNEDY . . . . .      | <i>Violin</i>    |
| MISS FLORENCE SMITH . . . . . | <i>Violin</i>    |
| NINA PARKE . . . . .          | <i>Violin</i>    |
| GUSSIE ROSE RIDDLE . . . . .  | <i>Xylophone</i> |
| MRS. HENRY ROBINSON . . . . . | <i>Violin</i>    |



C L U B S



Adams	Ames	Balkom	Cairns
Cassel	Chamlee	Clark	Cook
Crispin	Deason	Edwards	Grant
Hertzka	King	McDaniel	Moore
Phillips	Redwine	Rabins	Rogers
Raine	Shipley	Stokey	Stowe
Swearingen	Tinder	Watson	

## K. U. B.

**HISTORY:** K. U. B. was founded in 1920 as the journalistic society of Agnes Scott. In 1931 it became affiliated with the Associated Press.

**PURPOSE:** To bring Agnes Scott before the public and to arouse student interest in journalism through contributions to the newspapers.

### OFFICERS

NELLE CHAMLEE	President
SUZANNE SMITH	Vice-President
MARY GRIST	Secretary
MARY LOUISE SCHUMAN	Treasurer

### MEMBERS

MARY ADAMS	AUGUSTA KING
LULU AMES	IDA LOIS MCDANIEL
FRANCES BALKCOM	SARA MOORE
LUCILLE CAIRNS	LOLA PHILLIPS
DOROTHY CASSEL	MARTHA REDWINE
ALICE CHAMLEE	MARGARET RABINS
MILDRED CLARK	MARGARET ROGERS
SARAH COOK	EMILY RAINE
ROSALYN CRISPIN	ISABEL SHIPLEY
MARY L. DEASON	MARGARET STOKEY
FIDESAH EDWARDS	MARY M. STOWE
SYBIL GRANT	C. SWARINGEN
KATHERINE HERTZKA	BUFORD TINDER
MARGARET WATSON	

Chamlee  
Grist

Smith  
Schuman





# Chi Beta Phi Sigma

**HISTORY:** In 1925, the Chemistry Club was organized by a group of students interested in the practical knowledge of chemistry. The club became the Alpha Chapter of Chi Beta Phi Sigma, the national fraternity for the development of science in 1933.

**YEAR'S WORK:** Well-informed speakers on various subjects are provided to broaden the scope of the information beyond that of the classroom.

## OFFICERS

LUCY GOSS . . . . . *President*  
 MARY SUMMERS . . . . . *Vice-President*  
 ELIZABETH YOUNG . . . . . *Secretary*  
 MARY WINTERBOTTOM . . . . . *Treasurer*

## MEMBERS

NELLE CHAMLEE  
 SARAH COOK  
 SARA DAVIS  
 MARGARET GOINS  
 CLAIRE IVY  
 MARGUERITE JONES  
 ELEANOR JOHNSON  
 ELIZABETH JOHNSON  
 MARTHA NORMAN  
 MARY LOUISE SCHUMAN  
 MARY SLOAN  
 CATHERINE SWearingen

Goss  
 Young  
 Summers  
 Winterbottom



Chamlee	Cook	Davis
Jones	Goins	Ivy
	Johnson	Johnson
	Norman	Schuman
Sloan		Swearingen





## Blackfriars

HISTORY: In 1915 Blackfriars was organized and presented "Midsummer Night's Dream" as their first play. Under the direction of Miss Gooch the organization has progressed towards adequate plays and careful and sincere acting.

### OFFICERS

ELAINE HECKLE . . . . . *President*  
 RUTH MOORE . . . . . *Vice-President*  
 CLAIRE IVY . . . . . *Secretary*  
 MARY HUTCHINSON . . . . . *Treasurer*

### MEMBERS

DORIS BATSELL  
 ANNA BERRY  
 MARY BOGGS  
 VIRGINIA BYERS  
 MARIAN CALHOUN  
 DOROTHY CASSEL  
 SHIRLEY CHRISTIAN  
 MARTHA ELLIOTT  
 MARY JANE EVANS  
 MARTHA ENGLAND  
 MARGARET FRIEND  
 ELEANOR GULLION  
 BETTY LOU HOUCK  
 FRANCES JAMES  
 AUGUSTA KING  
 CARRIE PHINNEY LATIMER  
 ROSA MILLER

Heckle . . . . . Moore  
 Ivy . . . . . Hutchinson



Batsell	Berry	Boggs	Byers
Calhoun	Cassel	Christian	
Elliott	Evans	England	Friend
Gullion	Houck	James	
King	Latimer	Miller	



# Blackfriars

PURPOSE: Blackfriars provides a chance for those girls who are interested in dramatics to study and act.

## MANAGERS

HESTER ANNE WITHERS, *Property Manager*  
 ANNA HUMBER . . . *Publicity Manager*  
 BETTY FOUNTAIN . . . *Costume Manager*

## MEMBERS

ALICE McCALLIE  
 IDA LOIS McDANIEL  
 MARY McDONALD  
 MARGUERITE MORRIS  
 FLORENCE PRESTON  
 VERA FRANCES PRUIT  
 CHARLOTTE REID  
 GUSSIE ROSE RIDDLE  
 LOICE RICHARDS  
 RUTH SHIPPEY  
 MARTHA SKEEN  
 MARGARET STOKEY  
 BUFORD TINDER  
 VIRGINIA TURNER  
 NELL WHITE  
 MARY WINTERBOTTOM  
 ISABELLA WIESON

Withers  
 Fountain

Humber



McCallie	McDaniel	McDonald	Morris
Preston	Pruet	Reid	
Riddle	Richards	Shippey	Skeen
Stokey	Tinder	Turner	
White	Winterbottom	Wilson	

# Pen and Brush Club

**HISTORY:** In 1926 Pen and Brush Club was organized by the art students.

**PURPOSE:** To create a more active interest in art as well as train its members in art creation and appreciation.

## OFFICERS

- FRANCES CASSEL . . . . . *President*  
 CLAIRE IVY . . . . . *Vice-President*  
 SARAH SPENCER . . . . . *Secretary*  
 ADELINE ROUNTREE . . . . . *Treasurer*

## MEMBERS

- CARRIE BLAIR  
 ROSALYN CRISPIN  
 ALICE DUNBAR  
 MARTHA ELLIOTT  
 BETTY FOUNTAIN  
 MARY GREEN  
 ELEANOR JOHNSON  
 ELIA KIRVEN  
 FRANCES McCULLY  
 NELL PATTILLO  
 LOICE RICHARDS  
 MARJORIE SCOTT  
 MARGARET STOKEY  
 LILLY WEEKS

Cassel  
 Spencer

Ivy  
 Rountree



Blair	Crispin	Dunbar
Elliott	Fountain	Green
Johnson	Kirven	McCully
Pattillo	Richards	Scott
Stokey	Weeks	



# Eta Sigma Phi

**HISTORY:** The Alpha Chapter of Eta Sigma Phi was installed at Agnes Scott in 1928 and is open to upperclassmen.

**PURPOSE:** To instill a greater appreciation of classical culture.

## OFFICERS

- ELIZABETH HICKSON . . . . . *President*  
 DOROTHY WALKER . . . . . *Vice-President*  
 EVA CONSTANTINE . . . . . *Recording Secretary*  
 EVA POLIAKOFF . . . . . *Treasurer*

## MEMBERS

- MARTHA ALLEN  
 MARY AMES  
 VIRGINIA BYERS  
 TRELIS CARMICHAEL  
 PAULINE GORDON  
 SYBIL GRANT  
 MARY JACKSON  
 LOUISE MCCAIN  
 MARGUERITE MORRIS  
 JOSEPHINE MORTON  
 ALBERTA PALMOUR  
 DOROTHY POTTS  
 GLADYS PRATT  
 ISABEL SHIPLEY  
 MARY ELIZABETH SQUIRES  
 MABEL TALMAGE  
 AMY UNDERWOOD  
 KATHERINE WHITE  
 ISABELLA WILSON

Hickson  
 Constantine

Walker  
 Poliakoff



Allen	Ames	Byers	Carmichael
Gordon	Grant	Jackson	
McCain	Morris	Morton	Palmour
Potts	Pratt	Shipley	Squires
Talmage	Underwood	White	Wilson





M. Allen M. V. Allen Behm Bull Calhoun  
 Carmichael Christian Clark Coffee  
 Cook England Ellis Fountain Garland  
 Gray Hamilton Herring Hertwig  
 Handte Harkness Humber Johnson Miller  
 Moore Morrison McCallie Pattillo  
 Preston Printup Robinson Rogers Spencer  
 Stokey Thomas Turner

## French Club

**HISTORY:** In 1920, French Club was founded as a social and intellectual society.

**PURPOSE:** To provide the students with opportunities of using conversational French.

**YEAR'S WORK:** The Alliance Francaise is invited to the campus during the year and at the regular monthly meetings excellent programs are presented.

### OFFICERS

MARTHA ELLIOTT . . . . . *President*  
 MARY BOGGS . . . . . *Vice-President*  
 AUGUSTA KING . . . . . *Secretary and Treasurer*

### MEMBERS

MARTHA ALLEN	BARBARA HERTWIG
MARY V. ALLEN	HELEN HANDTE
VELLA MARIE BEHM	HETTY HARKNESS
MERIEL BULL	ANNA HUMBER
MARIAN CALHOUN	ETHELYN JOHNSON
TRELLIS CARMICHAEL	FRANCES MILLER
SHIRLEY CHRISTIAN	ELIZABETH MOORE
MILDRED CLARK	CLARA MORRISON
ANN COFFEE	ALICE MCCALLIE
SARAH COOK	NELL PATTILLO
MARTHA ENGLAND	FLORENCE PRESTON
MARTHA PLANT ELLIS	KATHERINE PRINTUP
BETTY FOUNTAIN	GRACE ROBINSON
MARY GARLAND	MARGARET ROGERS
JANET GRAY	SARAH SPENCER
MARY HAMILTON	MARGARET STOKEY
LILLIAN HERRING	JANE THOMAS
	SARAH TURNER

Elliott  
 King Boggs



## Cotillion Club

**HISTORY:** In 1921, the Cotillion Club was organized and is the only strictly social club on the campus.

**PURPOSE:** To uphold the highest social standards.

**YEAR'S WORK:** The annual Thanksgiving Dance is sponsored by the club, and every two weeks throughout the year tea dances are held for the members.

### OFFICERS

MARTHA PLANT ELLIS . . . . . *President*  
 NELL WHITE . . . . . *Secretary and Treasurer*  
 NINA PARKE . . . . . *Vice-President*

### MEMBERS

E. ALEXANDER	MARY McDONALD
ALOE RISSE BARRON	FRANCES McCALLA
REBECCA CASHION	JANE McMILLAN
CAROLYN CLEMENTS	MARGUERITE MORRIS
VIRGINIA COONS	LOUISE PREAS
ELINOR HAMILTON	MADELINE RACE
MARY HAMILTON	LOICE RICHARDS
HELEN HANDTE	GUSSIE ROSE RIDDLE
BETTY LOU HOUCK	LEONORA SPENCER
RUBY HUTTON	BUFORD TINDER
CLAIRE IVY	JULIA THING
JOSEPHINE JENNINGS	CHRYSANTHY TUNTAS
EDITH KENDRICK	MEREDITH TURNER
AUGUSTA KING	DOROTHY WALKER
CAROLINE LONG	CAROLINE WATERMAN
Laura Whitner	

Ellis  
Parke

White



Alexander	Barron	Cashion	Clements	Coons
Hutton	E. Hamilton	M. Hamilton	Handte	Houck
	Ivy	Jennings	Kendrick	King
	Long	McDonald	McCalla	McMillan
Morris	Preas	Race	Richards	Riddle
	Spencer	Tinder	Thing	
Tuntas	Turner	Walker	Waterman	Whitner



# Pi Alpha Phi



**HISTORY:** Pi Alpha Phi, the honorary debating society of Agnes Scott, was organized in 1920.

**PURPOSE:** To encourage debating between the students of Agnes Scott and intercollegiate debating also.

**YEAR'S WORK:** Triangular debates with Sophie Newcomb, Randolph-Macon, Georgia Tech, and Emory were included in this year's program.

## OFFICERS

- ELIZABETH WINN . . . . . *President*  
 MARIAN CALHOUN . . . . . *Vice-President*  
 IOA LOIS McDANIEL . . . . . *Secretary*  
 FRANCES JAMES . . . . . *Treasurer*

## MEMBERS

- |                   |                    |
|-------------------|--------------------|
| MARY V. ALLEN     | EVA POLIAKOFF      |
| HELEN BOYD        | MARTHA REDWINE     |
| MILDRED COHEN     | GUSSIE ROSE RIDDLE |
| ALICE DUNBAR      | CAROLYN RUSSELL    |
| MARY JANE EVANS   | MARIE SIMPSON      |
| ALMA GROVES       | MARY E. SQUIRES    |
| HELEN HANDTE      | MARIE TOWNSEND     |
| CARRIE P. LATIMER | SARAH C. WOOD      |
| ALBERTA PALMOUR   | FLORA YOUNG        |

Winn  
McDaniel

Calhoun  
James

- |         |          |           |         |
|---------|----------|-----------|---------|
| Allen   | Boyd     | Cohen     | Dunbar  |
| Evans   | Groves   | Handte    | Redwine |
| Latimer | Palmour  | Poliakoff | Simpson |
| Riddle  | Russell  | Wood      | Young   |
| Squires | Townsend |           |         |



# International Relations Club

**HISTORY:** The International Relations Club was organized in 1921.

**PURPOSE:** To acquaint the students with affairs of current interest.

**YEAR'S WORK:** The program this year has been to study affairs of the United States as well as of Europe.

## OFFICERS

HELEN BOYD . . . . . *President*  
 MARY ADAMS . . . . . *Secretary and Treasurer*

## MEMBERS

MARY AMES	ELINOR HAMILTON
SARAH AUSTIN	ELIZABETH HEATON
MARIAN CALHOUN	ANNA HUMBER
DOROTHY CASSEL	JEAN KIRKPATRICK
FRANCES CASSEL	JUNE MATTHEWS
ROSALYN CRISPIN	CAROLYN RUSSELL
FIDESAH EDWARDS	LOUISE SCHUESSLER
MARY JANE EVANS	LAURA STEELE
BETTY FOUNTAIN	MARGARET WATSON
MARGARET FRIEND	HESTER ANNE WITHERS
ROSA FROM	SARAH C. WOOD

Boyd

Adams



Ames	Austin	Calhoun	D. Cassel
F. Cassel	Crispin	Edwards	Evans
Fountain	Friend	From	
Hamilton	Heaton	Humber	
Kirkpatrick	Matthews	Russell	Schuessler
Steele	Watson	Withers	Wood



Austin	Boyd	Cunningham	Friend
Green	Hart	Houck	Jones
Jones	S. Jones	Johnson	Kennedy
A. King	M. King	Lassiter	Massie
Miller	Riddle	Russell	Spencer
Schuman	Shippy	Taffar	Thing
F. Wilson	I. Wilson	Wood	York

## Glee Club

PURPOSE: To sponsor good programs of music under the direction of Mr. Johnson.

YEAR'S WORK: The club has presentations at the college, over the radio, and in Atlanta churches, which are of wide-spread enjoyment.

### OFFICERS

- NELLE CHAMLEE . . . . . *President*  
 ANNA BERRY . . . . . *Vice-President*  
 ALICE CHAMLEE . . . . . *Secretary*  
 SHIRLEY CHRISTIAN . . . . . *Treasurer*

### MEMBERS

- |                   |                    |
|-------------------|--------------------|
| NETTIE MAE AUSTIN | FLORENCE LASSITER  |
| HELEN BOYD        | MARGARET MASSIE    |
| K. CUNNINGHAM     | ROSA MILLER        |
| MARGARET FRIEND   | GUSSIE ROSE RIDDLE |
| MARY GREEN        | CAROLYN RUSSELL    |
| LAURA HART        | LEONORA SPENCER    |
| BETTY LOU HOUCK   | MARY L. SCHUMAN    |
| MARGARET JONES    | RUTH SHIPPY        |
| MOLLY JONES       | RUDENE TAFFAR      |
| SARAH JONES       | JULIA THING        |
| SARAH JOHNSON     | FRANCES WILSON     |
| RACHEL KENNEDY    | ISABELLA WILSON    |
| AUGUSTA KING      | VIRGINIA WOOD      |
| MARY KING         | JOHNNIE MAE YORK   |

Chamlee	Berry
Chamlee	Christian



# Citizenship Club

**HISTORY:** In 1926 the Citizenship Club was organized and in 1929 it was made a part of the League of Women Voters.

**PURPOSE:** To familiarize the student body with the principles of voting and current politics so they will be well qualified to vote.

## OFFICERS

- CAROLYN RUSSELL . . . . . *President*  
 HELEN BOYD . . . . . *Vice-President*  
 SARAH CATHERINE WOOD  
 . . . . . *Secretary and Treasurer*

## MEMBERS

- VELLA MARIE BEHM  
 URSULA BOESE  
 GLADYS BURNS  
 IONA CATER  
 MARTHA ELLIOTT  
 VIRGINIA FISHER  
 ROSA FROM  
 CAROL GRIFFIN  
 ELINOR HAMILTON  
 ELEANOR JOHNSON  
 GRETCHEN KLEYBECKER  
 SALLIE McREE  
 ALBERTA PALMOUR  
 CHARLOTTE REID  
 MARTHA SKEEN

Russell  
 Wood

Boyd



- |         |            |          |
|---------|------------|----------|
| Behm    | Boese      | Burns    |
| Cater   | Elliott    | Fisher   |
| From    | Griffin    | Hamilton |
| Johnson | Kleybecker | McRee    |
| Palmour | Reid       | Skeen    |



## Poetry Club

**HISTORY:** Poetry Club was organized in 1921. Several of the members have received national recognition for their efforts.

**PURPOSE:** To stimulate interest in contemporary poetry and to encourage the writing of verse by the students.

### OFFICERS

FRANCES ESPY . . . . . *President*  
ANN MARTIN . . . . . *Secretary and Treasurer*

### MEMBERS

MARY BOGGS  
MILDRED CLARK  
ELEANORE GULLION  
BARBARA HERTWIG  
ISABEL LOWRANCE  
JULE MCCLATCHEY  
SARAH TURNER



Boggs

Clark

Gullion

Hertwig

Lowrance

McClatchey

Turner

Espy

Martin



# Bible Club

**HISTORY:** About twelve years ago the Bible Club was organized. The members consist of students taking Bible and the officers are chosen from the majors of this subject.

**PURPOSE:** To bring to those students subjects of interest related to Bible study and missionary work.

## OFFICERS

- LOUISE McCAIN . . . . . *President*  
 MARIE SIMPSON . . . . . *Vice-President*  
 DOROTHY POTTS . . . . . *Secretary*  
 SARAH AUSTIN . . . . . *Treasurer*

## CHAIRMEN

- LENA ARMSTRONG  
 HELEN BOYD  
 CAROLINE DICKSON  
 FIDESAH EDWARDS  
 EMILY ROWE  
 RUDINE TAFFAR

McCain  
Potts

Simpson  
Austin



Armstrong

Dickson

Boyd

Edwards

Taffar

Rowe





## Granddaughters' Club

HISTORY: The Granddaughters' Club is an important tradition at Agnes Scott. The club is composed of those girls whose mothers were Agnes Scott students.

### OFFICERS

CHARLOTTE REID . . . . . *President*  
 ELIZABETH FORMAN, *Secretary and Treasurer*  
 MARTHA REDWINE . . . . . *Vice-President*

### MEMBERS

MARY ADAMS  
 LUCILLE CAIRNS  
 LUCY GOSS  
 MARY HAMILTON  
 ANNE SCOTT HARMAN  
 FANNIE B. HARRIS  
 ELAINE HECKLE  
 BARTON JACKSON  
 MARTHA JOHNSON  
 EDITH KENDRICK  
 DOROTHY LEE  
 ISABEL LOWRANCE  
 FRANCES McCULLY  
 CLARA MORRISON  
 ORA MUSE  
 ALBERTA PALMOUR  
 FLORENCE PRESTON  
 SUSAN TURNER  
 ELIZABETH WINN

Reid  
 Redwine

Forman



Adams	Cairns	Goss	Hamilton
Harman	Harris	Heckle	Lee
Jackson	Johnson	Kendrick	Muse
Lowrance	McCully	Morrison	Winn
Palmour	Preston	Turner	



# German Club

**HISTORY:** Several years ago students of German formed a club, with Miss Harn as supervisor.

**PURPOSE:** To become more familiar with the spoken language and all phases of German culture.

## OFFICERS

BARBARA HERTWIG . . . . . *President*  
 MARION MATHEWS . . . . . *Vice-President*

## MEMBERS

MARY V. ALLEN	ANNA HUMBER
LULU AMES	RUBY HUTTON
URSULA BOESE	ETHELYN JOHNSON
MARY BOGGS	MARGARET JONES
MARIAN CALHOUN	CAROLINE LONG
ANN COFFEE	FRANCES McCALLA
PAULINE CURETON	CLARA MORRISON
FIDESAH EDWARDS	GLADYS PRATT
ROSA FROM	GRACE ROBINSON
PAULINE GORDON	MARGARET ROGERS
SYBIL GRANT	LOUISE SCHUESSLER
JANET GRAY	MARY L. SCHUMAN
MARY GRIST	SUZANNE SMITH
ALMA GROVES	LEONORA SPENCER
ELIZABETH HARBISON	MARGARET STOEKEY
KATHERINE HERTZKA	MARY SLOAN
ELIZABETH HICKSON	BETTY WILLIS
	ISABELLA WILSON

Hertwig

Mathews



Allen	Ames	Boese	Boggs	Calhoun
Coffee	Cureton	Edwards	From	
Gordon	Grant	Gray	Grist	Groves
Harbison	Hertzka	Hickson	Humber	
Hutton	Johnson	Jones	Long	McCalla
Morrison	Pratt	Robinson	Rogers	
Schuessler	Schuman	Smith	Spencer	Stokey
	Sloan	Willis	Wilson	



Allen	Batsell	Ames
Boggs	Heckle	Hamilton
Martin	Young	Prettyman

## B. O. Z.

**HISTORY:** In 1916 B. O. Z., the prose writing club of the campus, was founded.

**PURPOSE:** To foster literary effort among the students and to improve the writings of its members by mutual criticism and discussion at the meetings.

### OFFICER

ANNA HUMBER . . . . . *President*

### MEMBERS

- MARY VIRGINIA ALLEN
- LULU AMES
- DORIS BATSELL
- MARY BOGGS
- MARY HAMILTON
- ELAINE HECKLE
- ANN MARTIN
- VIRGINIA PRETTYMAN
- FLORA YOUNG

Humber



# Spanish Club

**HISTORY:** Several years ago the Spanish Club was organized under the auspices of the Spanish department.

**PURPOSE:** To familiarize Spanish students with the conversational language and give interesting and valuable information related to the study of Spanish.

### OFFICERS

NELL PATTILLO . . . . . *President*  
 RUDINE TAFFAR . . . . . *Vice-President*  
 MARY LOUISE LATIMER

*Secretary and Treasurer*

### MEMBERS

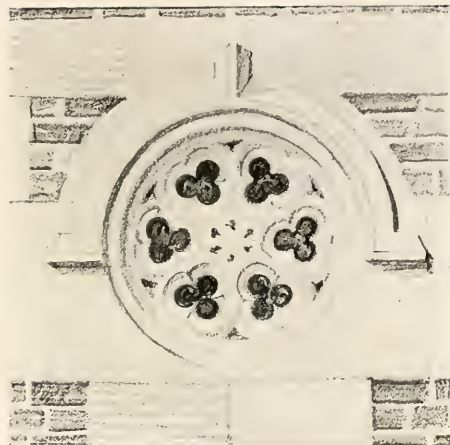
- LULU AMES
- CORRIE BLAIR
- TRELLIS CARMICHAEL
- DOROTHY CASSEL
- JANE CASSELS
- SHIRLEY CHRISTIAN
- CORNELIA CHRISTIE
- MARY LILLIAN DEASON
- FIDESAH EDWARDS
- CAROL GRIFFIN
- ELINOR HAMILTON
- LAURA HART
- MARY HUTCHINSON
- MARY JACKSON
- LOLA PHILLIPS
- MARTHA REDWINE
- GUSSIE ROSE RIDDLE
- MARGARET ROGERS
- SUZANNE SMITH

Pattillo . . . . . Taffar  
 Latimer

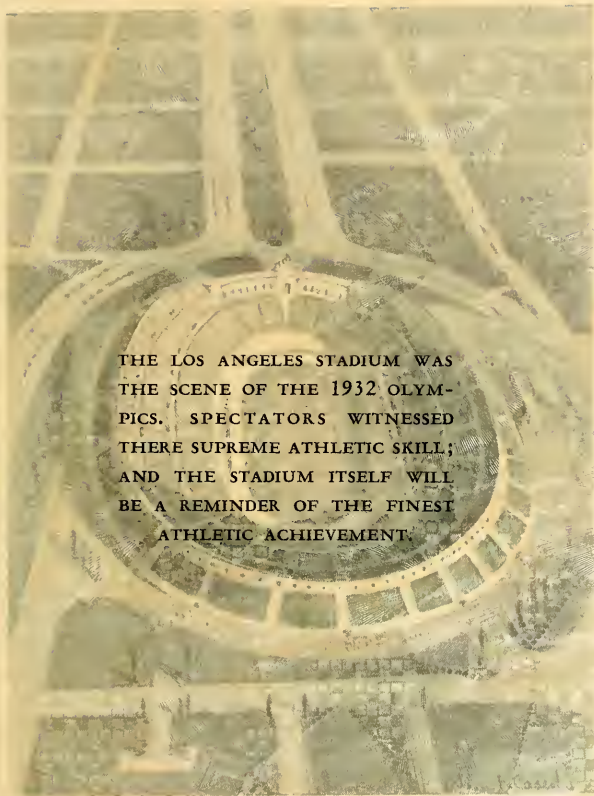


Ames	Blair	Carmichael	Cassel
	Cassels	Christian	Christie
Deason	Edwards	Griffin	Hamilton
Hart	Hutchinson	Jackson	Phillips
Redwine	Riddle	Rogers	Smith







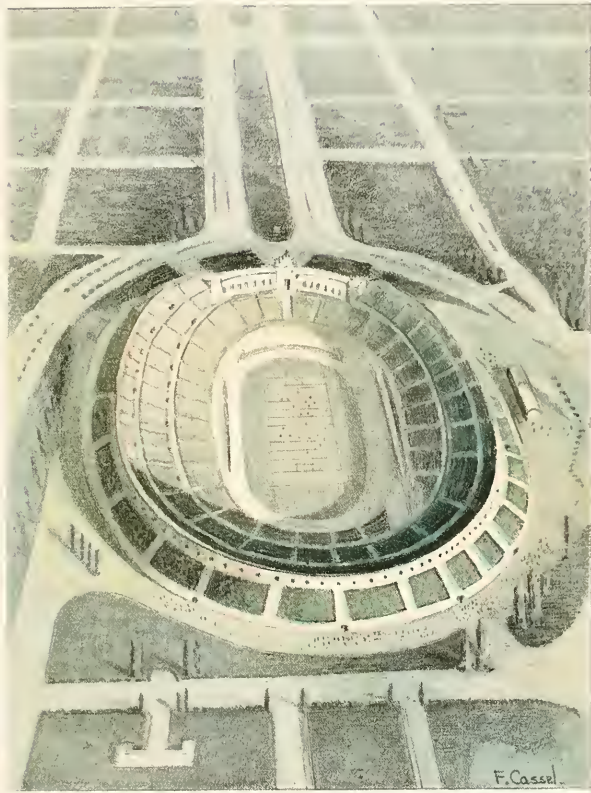


THE LOS ANGELES STADIUM WAS  
THE SCENE OF THE 1932 OLYM-  
PICS. SPECTATORS WITNESSED  
THERE SUPREME ATHLETIC SKILL;  
AND THE STADIUM ITSELF WILL  
BE A REMINDER OF THE FINEST  
ATHLETIC ACHIEVEMENT.

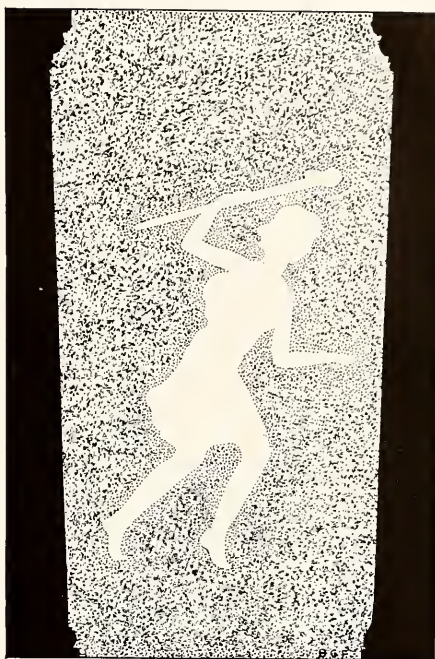
# *ART OF COOPERATION*

THE LOS ANGELES STADIUM WAS  
THE SCENE OF THE 1932 OLYM-  
PIC. SPECTATORS WITNESSED  
THERE SUPREME ATHLETIC SKILL;  
AND THE STADIUM ITSELF WILL  
BE A REMINDER OF THE FIRST  
ATHLETIC ACHIEVEMENT.

# ART OF COOPERATION







THE TORCHBEARER

# The Athletic Association





McCalla                      Spencer  
 Armstrong                O'Brien                      Simpson  
                                     Riddle

## Athletic Association

**HISTORY:** In 1907 the first definite plans for an athletic association were made. Since that time the organization has grown in importance and has been the effective agency which provides for new sports, seeks more adequate gymnasium equipment. The services of Miss Wilburn and Miss Haynes are invaluable.

### OFFICERS

- MARGARET MASSIE . . . . . *President*  
 MARGARET FRIEND . . . . . *Vice-President*  
 FRANCES McCALLA . . . . . *Secretary*  
 LEONORA SPENCER . . . . . *Treasurer*

### MEMBERS

- FRANCES O'BRIEN . . . . . *Social Chairman*  
 LENA ARMSTRONG . . . . . *Publicity Manager*  
 MARIE SIMPSON . . . . . *Lost and Found Manager*  
 GUSSIE ROSE RIDDLE . . . . . *Song Leader*  
 MARGARET FRIEND . . . . . *Camp Manager*

Massie



# Athletic Association

PURPOSE: The Association arranges a satisfactory program of athletics to stimulate interest in healthy recreation and play for the joy of playing.

## MANAGERS OF SPORTS

- BETTY HARBISON . . . . *Hockey Manager*  
 ANN COFFEE  
     *Swimming and Water Polo Manager*  
 HELEN HANDTE . . . . *Tennis Manager*  
 ROSA MILLER . . . . *Hiking Manager*  
 LEONORA SPENCER . . *Basket-ball Manager*  
 FRANCES McCALLA . . *Volley-ball Manager*  
 FLORENCE PRESTON . . *Archery Manager*



Harbison

Coffee

Handte

Miller

Preston

Friend



## Wearers of the A. S.

The Athletic Association recognizes fine sportsmanship, ability, and a true love of sport by awarding the purple and white monogram.

Those winning the required number of points are:

MARY AMES  
 SARAH AUSTIN  
 HELEN BOYD  
 DOROTHY CASSEL  
 VIRGINIA FISHER  
 PAULINE GORDON  
 ELINOR HAMILTON  
 BETTY HARBISON  
 FRANCES McCALLA  
 CARRIE LENA McMULLEN  
 MARGARET MASSIE  
 FRANCES O'BRIEN  
 LOUISE SCHUESSLER  
 LEONORA SPENCER  
 MARJORIE TINDALL



Ames		Austin		Boyd
	Cassel		Fisher	
Gordon		Hamilton		Harbison
	McCalla		McMullen	
Massie		O'Brien		Schuessler
	Spencer		Tindall	





Davis, Spencer, Baker, Stalker, Friend

## Cheer Leaders

The cheer leaders are elected by the classes to lead the cheers and songs at games and stunts.

MARGARET FRIEND . . . . .	Senior
LEONORA SPENCER . . . . .	Junior
ELLEN DAVIS . . . . .	Sophomore
ANN BAKER . . . . .	Freshman
MARIE STALKER . . . . .	Freshman

Handte



Goss



Helen Handte won the hockey stick awarded by the Senior Class to the Sophomore making the finest record in sportsmanship and skill in hockey.

Lucy Goss won the title of Miss Health 1934 at the contest held March 22, 1934.

## Athletic Program

THEME: "Personal Progress in Pep and Play."

RALLY: The Athletic Fair  
September 22, 1934.

HEALTH WEEKS:

Foot Clinic—December 4-9, 1933.

Anti-cold Campaign—January 10-13,  
1934.

Interdormitory Health Contest—January  
15-26, 1934.

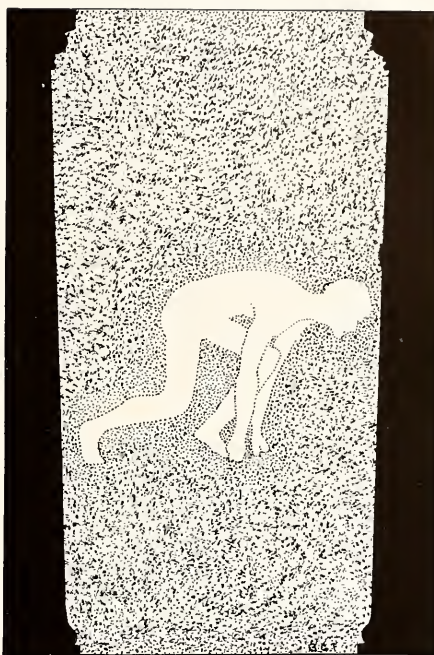
Posture Week—February 12-17, 1934.

NEW PROJECT: Saturday afternoon and night recreation.

HIGH SCHOOL PLAY DAY—April 14, 1934.

ATHLETIC BANQUET—May 7, 1934.





THE SPRINTER, BY LOPEZ

## MAJOR SPORTS

## Results of the Hockey Season



### *Hockey Action*

	<i>October 13th</i>	
SENIORS vs. FRESHMEN 4-0		JUNIORS vs. SOPHOMORES 2-1
	<i>October 20th</i>	
SENIORS vs. SOPHOMORES 1-0		JUNIORS vs. FRESHMEN 1-1
	<i>October 27th</i>	
SENIORS vs. JUNIORS 1-0		SOPHOMORES vs. FRESHMEN 4-1
	<i>November 3rd</i>	
SENIORS vs. FRESHMEN 1-1		JUNIORS vs. SOPHOMORES 1-0
	<i>November 10th</i>	
SENIORS vs. SOPHOMORES 2-1		JUNIORS vs. FRESHMEN 1-2
	<i>November 17th</i>	
SENIORS vs. JUNIORS 1-1		SOPHOMORES vs. FRESHMEN 0-3
	<i>November 24th</i>	
	FACULTY vs. VARSITY 0-1	

# Hockey Varsity



Massie, McCalla, Hamilton, Kneale, Harbison  
Maness, Tindall, Handte, Armstrong, McMullen, Forman

## MEMBERS OF THE HOCKEY VARSITY

### *Forward Line*

ELINOR HAMILTON

HELEN HANDTE

FRANCES MCCALLA

KATHRYN MANESS

MARGARET MASSIE

MARJORIE TINDALL

### *Back Field*

LENA ARMSTRONG

ELIZABETH FORMAN

CARRIE LENA McMULLEN

ELIZABETH HARBISON

MARY KNEALE

## Senior Hockey Team



Maness, Massie, Austin, Russell, McMullen  
Hamilton, Tindall, Boyd, Schuessler, Harbison

The Senior Hockey Team played exceptionally consistent games, exhibiting fine team work. The Senior Team won the Hockey Banner.

### MEMBERS

KATHRYN MANESS . . . . . *Captain*

SARAH AUSTIN . . . . . *Manager*

HELEN BOYD

MARGARET MASSIE

ELINOR HAMILTON

CAROLYN RUSSELL

ELIZABETH HARBISON

LOUISE SCHUESSLER

CARRIE LENA McMULLEN

MARJORIE TINDALL

# Junior Hockey Team



McCalla, Young, Duls, Woolfolk, Waterman  
 Long, Green, Simpson, Palmour, Spencer

The Junior Hockey Team showed some of the finest spirit during the season. They all played hard and well, tying for second place with the Freshmen.

## MEMBERS

FRANCES MCCALLA . . . . . *Captain*

CAROLINE LONG . . . . . *Manager*

MAE DULS

LEONORA SPENCER

MARY GREEN

MARGARET WATERMAN

ALBERTA PALMOUR

JACQUELINE WOOLFOLK

MARIE SIMPSON

ELIZABETH YOUNG



## Sophomore Hockey Team



Estes, Townsend, Latimer, Coffee  
Miller, Crenshaw, Hart, Tipton, Handte

The Sophomore Hockey Team maintained good spirit throughout the season. The players worked hard in the face of defeat and difficulties.

### MEMBERS

HELEN HANDTE . . . . . *Captain*

LOIS HART . . . . . *Manager*

ANN COFFEE

CARRIE PHINNEY LATIMER

MARTHA CRENSHAW

ROSA MILLER

SARA FRANCES ESTES

LOUISE TIPTON

MARIE TOWNSEND

# Freshman Hockey Team



Wilder, Stalker, Cary  
Taylor, Baker, Kennedy

The Freshman Hockey Team had to have some very enthusiastic new players to win the games they did. The team well deserves the tie with the Juniors for second place.

## MEMBERS

MARIE STALKER . . . . . *Captain*

ANN BAKER . . . . . *Manager*

FRANCES CARY

RACHEL KENNEDY

ALICE TAYLOR

ROSA WILDER

## Life Saving



*Life Savers*

Green, Crenshaw, Handte, Willis, Richardson, Bull  
Ames, Jackson, Fountain, Richardson, Palmour, McCallie  
Fisher, Coffee, Cassel, McMullen, McCalla, Jester

Life-saving examinations are given each year under the auspices of the American Red Cross. The following girls are entitled to be either Senior Life-Savers or examiners.

MARY AMES  
MERIEL BULL  
DOROTHY CASSEL  
ANN COFFEE  
MARTHA CRENSHAW  
VIRGINIA FISHER

BETTY FOUNTAIN  
MARY GREEN  
HELEN HANDTE  
MARY JACKSON  
DOROTHY JESTER  
FRANCES MCCALLA

ALICE MCCALLIE  
CARRIE LENA McMULLEN  
ALBERTA PALMOUR  
LOICE RICHARDS  
MARY RICHARDSON  
BETTY WILLIS

## Swimming Season

SWIMMING MEET

*November 1, 1933*

SOPHOMORES . . . . .	32 Points	JUNIORS . . . . .	10 Points
SENIORS . . . . .	21 Points	FRESHMEN . . . . .	7 Points

WATER PAGEANT

*November 23, 1933*

"NEPTUNE, TRITON, AND ARDITA"

ANN COFFEE, *Director*

## Swimming Varsity



Hamilton, Printup, Coffe, Cassel, Kneale, Gordon

### MEMBERS

DOROTHY CASSEL

ANN COFFEE

PAULINE GORDON

ELINOR HAMILTON

MARY KNEALE

KATHERINE PRINTUP

## Senior Swimming Team



Hamilton, Fisher, Cassel, Ames, Gordon

The Senior Swimming Team had the desired balance between good swimmers and divers. The members were enthusiastic.

### MEMBERS

VIRGINIA FISHER . . . *Manager*

MARY AMES

DOROTHY CASSEL

PAULINE GORDON

ELINOR HAMILTON

## Junior Swimming Team

The Junior Swimming Team had more interest in the water sports than usual. The team lacked divers; they made a better record in specific swimming events.

### MEMBERS

MARY GREEN . . . *Manager*

FIDESAH EDWARDS

FRANCES MCCALLA

ALBERTA PALMOUR

LOICE RICHARDS

LEONORA SPENCER

Green, McCalla, Edwards, Palmour, Spencer, Richards



## Sophomore Swimming Team

The Sophomore Swimming Team did the outstanding work of the season. The team manifested real interest which in part helped them to win the Swimming Banner.

### MEMBERS

ALICE MCCALLIE . *Manager*

MERIEL BULL

ELIZABETH BURSON

ANN COFFEE

MARY RICHARDSON



Bull, Coffee, Richardson, McCallie, Burson

## Freshman Swimming Team

Jackson, Printup, Scott, Kneale



The Freshman Swimming Team was fortunate in having experienced swimmers from the start. Members of the team practiced hard and were genuinely good sportsmen.

### MEMBERS

KATHERINE PRINTUP, *Manager*

BARTON JACKSON

MARY KNEALE

MARJORIE SCOTT



# Water Polo Varsity



Coffee, Lassiter, Cassel, Johnson, Forman

## MEMBERS

DOROTHY CASSEL  
ANN COFFEE

FLORENCE LASSITER

ELIZABETH FORMAN  
MARY JOHNSON

Water Polo was made a Spring sport this year. This is possibly the reason the class teams had to combine to have large enough groups for the games. The season has been very successful with many exciting games as the scores show.

## RESULTS OF THE SEASON

SENIOR-JUNIOR TEAM vs. SOPHOMORE-FRESHMAN TEAM

*March 26th*

4-5

*April 6th*

1-4

*April 13th*

7-5

*April 20th*

5-6

*April 25th*

5-6

# Water Polo

## Senior-Junior Team

DOROTHY CASSEL . *Manager*

### MEMBERS

BETTY FOUNTAIN

ALBERTA PALMOUR

FLORENCE PRESTON

The Senior-Junior Team did not have the enthusiasm and interest that was needed for practicing. The games were played faithfully but not successfully.



Cassel, Palmour, Fountain, Preston



Coffee, Lassiter, Johnson, Jackson, Richardson,  
McCallie, Forman

## Sophomore-Freshman Team

ALICE MCCALLIE . *Manager*

### MEMBERS

ANN COFFEE

ELIZABETH FORMAN

BARTON JACKSON

MARY JOHNSON

FLORENCE LASSITER

MARY RICHARDSON

The Sophomore - Freshman Team ended the season as the decided winner and well deserving the honor.

## Basket-Ball Season

The 1933-34 Basket-ball Season was one of the most exciting in a number of years. The teams of the underclassmen exhibited almost spectacular skill.

### *December 1st*

SENIORS *vs.* FRESHMEN  
15-20

JUNIORS *vs.* SOPHOMORES  
10-15

### *December 8th*

SENIORS *vs.* SOPHOMORES  
12-24

JUNIORS *vs.* FRESHMEN  
17-23

### *February 2nd*

SENIORS *vs.* JUNIORS  
23-11

SOPHOMORES *vs.* FRESHMEN  
27-20

### *February 9th*

SENIORS *vs.* FRESHMEN  
12-21

JUNIORS *vs.* SOPHOMORES  
25-23

### *February 16th*

SENIORS *vs.* SOPHOMORES  
16-26

JUNIORS *vs.* FRESHMEN  
20-27

### *February 23rd*

SENIORS *vs.* JUNIORS  
9-8

SOPHOMORES *vs.* FRESHMEN  
26-28

# Basket-Ball Varsity



Tomlinson, Handte, Spencer, Stalker

Walker, Massie, Burson, Ames

## MEMBERS

### *Forwards*

HELEN HANDTE

SARAH TOMLINSON

MARGARET MASSIE

ANN WALKER

### *Guards*

MARY AMES

LEONORA SPENCER

ELIZABETH BURSON

MARIE STALKER

## Senior Basket-Ball



Austin, Barron, Ames  
Massie, Hamilton, Tindall

The Senior Basket-ball Team was handicapped as usual by lack of practice. The team had material which was unfortunately not used to its full advantage; yet the players were loyal.

### MEMBERS

SARAH AUSTIN . . . . . *Captain*

MARJORIE TINDALL . . . . . *Manager*

MARY AMES

ELINOR HAMILTON

ALOE RISSE BARRON

MARGARET MASSIE

## Junior Basket-Ball Team



McCalla, Richards, Green  
Young, Simpson, Spencer

Unfortunately the Junior Basket-ball Team had several inexperienced players. The team as a whole, though, put up a fine front and is to be commended.

### MEMBERS

LEONORA SPENCER . . . . . *Captain*

MARIE SIMPSON . . . . . *Manager*

MARY GREEN

LOICE RICHARDS

FRANCES MCCALLA

ELIZABETH YOUNG



## Sophomore Basket-Ball Team



Latimer, Handte, Burson, Armstrong  
Stevens, Tomlinson, Coffee, O'Neal, Estes

The Sophomore Basket-ball Team made a splendid showing during the season. The number of girls out for the class team and the admirable playing made it one of the most popular teams of the year.

### MEMBERS

ADELAIDE STEVENS . . . . . *Captain*

ELIZABETH BURSON . . . . . *Manager*

LENA ARMSTRONG

HELEN HANDTE

ANN COFFEE

CARRIE PHINNEY LATIMER

SARA FRANCES ESTES

MYRA O'NEAL

SARAH TOMLINSON

## Freshman Basket-Ball Team



Kennedy, Stalker, Thing  
Cary, Walker, Peeples, McCain

The Freshman Basket-ball Team did not lose a game the whole season.  
They all played with a self-confidence and skill of splendid players.  
This Class team won the Basket-ball Banner.

### MEMBERS

ISABEL McCAIN . . . . . *Captain*

MARIE STALKER . . . . . *Manager*

FRANCES CARY

BEVERLY PEEPLES

RACHEL KENNEDY

JULIA THING

ANN WALKER

## Soccer Season

Soccer was played for the first time on our campus this year. So many of the girls liked the sport that the experiment will probably be tried for another year before deciding whether to play baseball again.

Due to many rains the soccer games were not played. The season ended in a tie that could not be played off.

### RESULTS

SENIOR-SOPHOMORE TEAM vs. JUNIOR-FRESHMAN TEAM

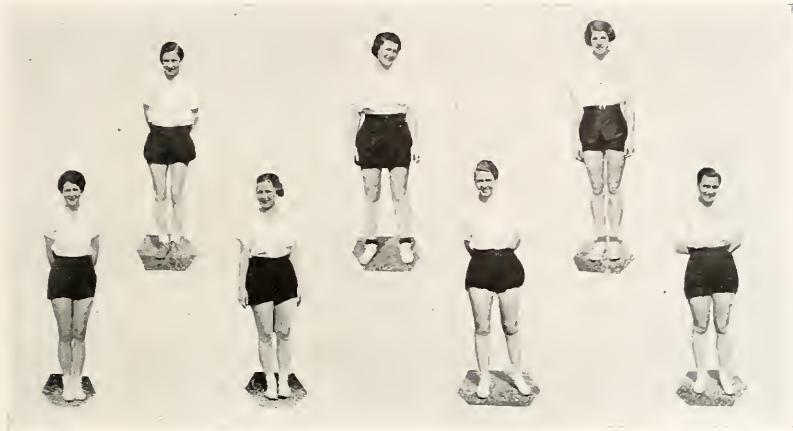
*April 13th*

2-1

*April 20th*

0-1

# Soccer Varsity



Young, Hart, Burson  
Stalker, Wilder, Cary, Kennedy

## MEMBERS

ELIZABETH BURSON

RACHEL KENNEDY

FRANCES CARY

MARIE STALKER

LOIS HART

ROSA WILDER

ELIZABETH YOUNG



## Senior-Sophomore Soccer Team



Clark, Hart, McKoin, Stevens, Armstrong  
Rountree, Burson, Harbison, Townsend, Lawrence

LOIS HART . . . . . *Manager*

### MEMBERS

LENA ARMSTRONG

ELIZABETH BURSON

MILDRED CLARK

ELIZABETH HARBISON

SARA LAWRENCE

DEAN MCKOIN

ADELINE ROUNTREE

ADELAIDE STEVENS

MARIE TOWNSEND

The Senior-Sophomore Team played the new sport well after a few practices. The sister classes worked well together, making a good stand against their opponents.

# Junior-Freshman Soccer Team



Thing, Young, Kennedy, Sutter  
 Stalker, Johnson, Walker, Wilder, Cary

ROSA WILDER . . . . . *Manager*

## MEMBERS

FRANCES CARY

MARIE STALKER

SARAH JOHNSON

JULIA THING

RACHEL KENNEDY

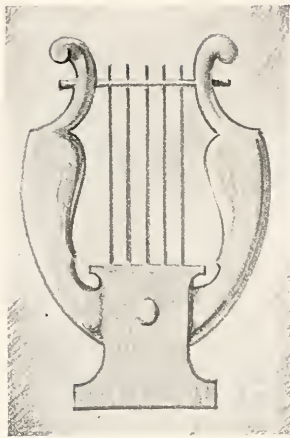
ANN WALKER

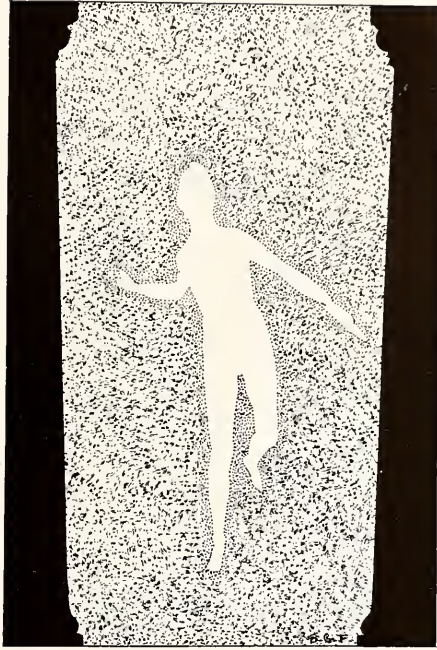
ESTHER SUTTER

ELIZABETH YOUNG

The Junior-Freshman Team enjoyed working up the new sport also. There were marks of future skilled soccer players.







DIANA, BY MACMONIES

## MINOR SPORTS



## Tennis Club

McDonald, Kneale, Thing, Talmage, Handte, Prettyman, McCalla  
 Massie, Ames, Friend, Cassel, Lawrence, Pratt, Talmage

The Tennis Club members are selected by well-supervised tryouts.  
 This club sponsors the Fall and Spring tennis tournaments.

### MEMBERS

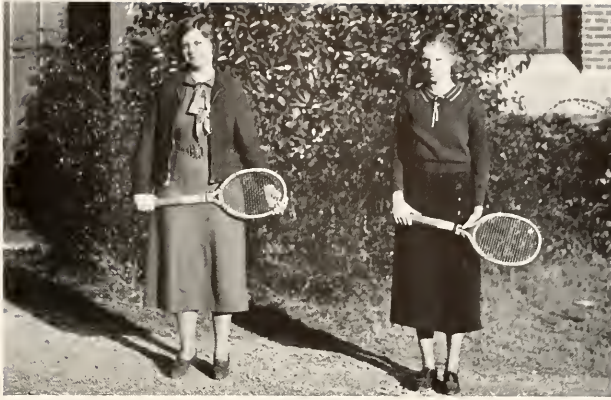
MARY AMES . . . *President*  
 FRANCES MCCALLA . . . *Secretary*

DOROTHY CASSEL  
 MARGARET FRIEND  
 HELEN HANDTE  
 MARY KNEALE  
 SARA LAWRENCE  
 FRANCES McDONALD  
 MARGARET MASSIE  
 GLADYS PRATT  
 VIRGINIA PRETTYMAN  
 MABEL TALMAGE  
 MARIAN TALMAGE  
 JULIA THING

McCalla, Ames



# Tennis



Lawrence, Talmage

Ames, Massie



The Tennis doubles tournament played during the fall was won by Margaret Massie and Mary Ames. This is the second consecutive year that these two have been named school champions. Sara Lawrence and Marian Talmage, the Sophomores, well deserve their second place.

The singles tournament was held late in the spring.



## Outing Club

*A group ready for an outing*

The Outing Club was organized in the fall of 1932 for a more concentrated study of fun in the out of doors. Girls interested in doing camp work in the summer find an opportunity to get training and new ideas for their work. It is by all means not limited to these girls. The interest in the club has grown rapidly in the last year and new members are joining all the time.

Tindall



# Hiking



Handte, Austin, J. Blair, Miller, Forman, Johnson  
Deason, Edwards, Furlow, Tindall, McCalla, Friend  
Lee, McKoin, C. Blair, Kennedy, Cary

The Hiking Club requires its members to have taken specified organized hikes and informal ones. The Hiking Manager arranges the daily hikes during examinations. The trips into Atlanta for supper are regular features enjoyed most of all.

## MEMBERS

SARAH AUSTIN

FRANCES CARY

CORRIE BLAIR

JANE BLAIR

MARY LILLIAN DEASON

FIDESAH EDWARDS

ELIZABETH FORMAN

MARGARET FRIEND

MICHELLE FURLOW

HELEN HANDTE

MARY JOHNSON

RACHEL KENNEDY

DOROTHY LEE

FRANCES MCCALLA

DEAN MCKOIN

ROSA MILLER

MARJORIE TINDALL





Peebles, Tindall, Cook, Jackson

## Archery

Batsell

At the Archery Contest in the fall, Doris Batsell won first place, Sarah Cook won second place. The archery enthusiasts are very proud of the improved archery equipment.



## Golf



Hamilton, O'Brien, McCalla, Kirven

Houck



Interest in golf is very general this year. Quite a number of girls entered the fall golf tournament. Betty Lou Houck won the Golf Cup for the first flight. Ella Kirven won golf balls as winner of the consolation tournament.

## Horseback Riding



Davis, Preas, Kump, Lemmon, White, Boyd, Palmour, Spencer, Willis, Bull

### MEMBERS OF "A" TEAM

HELEN BOYD

ELLEN DAVIS

MERIEL BULL

MARGARET KUMP

ELEANOR LEMMON

ALBERTA PALMOUR

LOUISE PREAS

LEONORA SPENCER

NELL WHITE

BETTY WILLIS

Riding has become one of the most popular sports on the campus. The supper rides and horse shows are special features of the classes. The advanced classes always go on the road; the beginner's classes are carefully supervised in the riding range. Teams were selected at horse shows.

# Volley-Ball Varsity



Talmage, McCalla, Lawrence, Young  
Stalker, Townsend, Massie, Walker, Tindall

The Volley-ball Season this year was a great success. The Freshmen won the Volley-ball Banner easily.

*February 9th*

SENIORS vs. FRESHMEN  
19-24

JUNIORS vs. SOPHOMORES  
18-41

*February 16th*

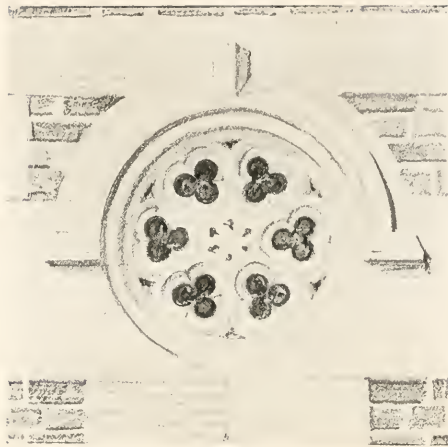
SENIORS vs. SOPHOMORES  
15-24

JUNIORS vs. FRESHMEN  
7-26

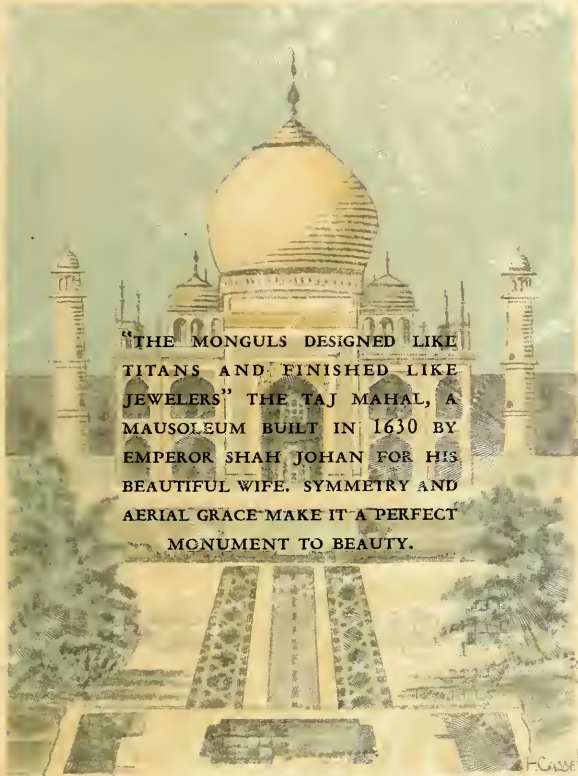
*February 23rd*

SENIORS vs. JUNIORS  
34-21

SOPHOMORES vs. FRESHMEN  
19-24







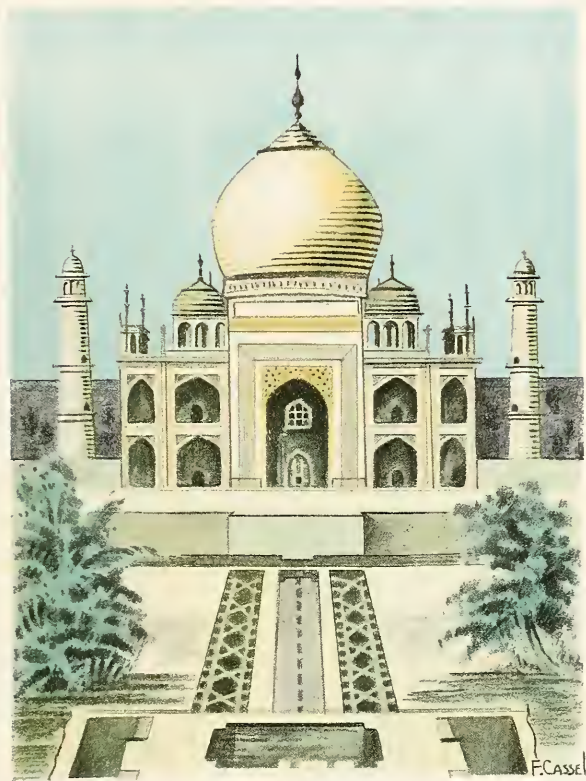
"THE MONGULS DESIGNED LIKE  
TITANS AND FINISHED LIKE  
JEWELERS" THE TAJ MAHAL, A  
MAUSOLEUM BUILT IN 1630 BY  
EMPEROR SHAH JOHAN FOR HIS  
BEAUTIFUL WIFE. SYMMETRY AND  
AERIAL GRACE MAKE IT A PERFECT  
MONUMENT TO BEAUTY.

*ART OF BEAUTY*



MONUMENT TO BEAUTY.  
AERIAL GRACE MADE IT A PERFECT  
BEAUTIFUL WITH SYMMETRY AND  
EMPEROR SHAH JOHAN FOR HIS  
MAUSOLEUM BUILT IN 1630 BY  
"JEWELERS" THE TAJ MAHAL, A  
TITANS AND FINISHED LIKE  
"THE MONGOLS DESIGNED LIKE

# ART OF BEAUTY





McMein.

My dear Miss Hamilton:

I have judged beauty contests for a great many years, and this is the first one I judged where all the contestants were pretty, so I had a very difficult time picking the ones I liked best. - And, as you can see for yourself, I couldn't confine myself to seven so I threw in one for good measure -

It is always a gamble picking out people from photographs as coloring plays such an important part in beauty, but by long distance - these are my choice.

Cordially,

Maya McMein

November twenty-fourth



MAXINE CRISLER







VIRGINIA TURNER





REBECCA CASHION





MARY GILLESPIE







ROSA MILLER





CHARLOTTE REID





MARGUERITE MORRIS

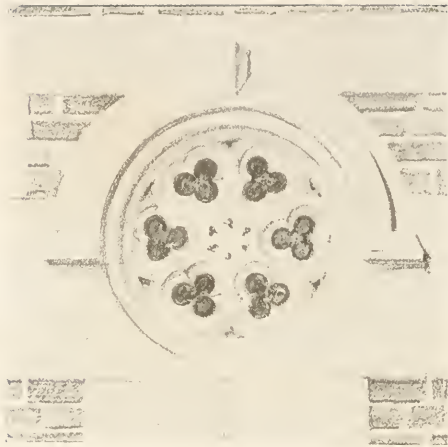


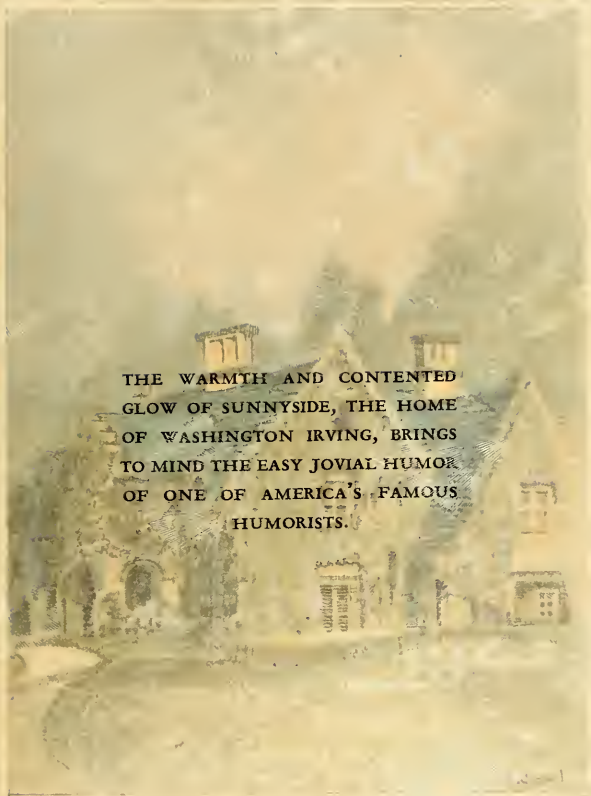




NELL WHITE

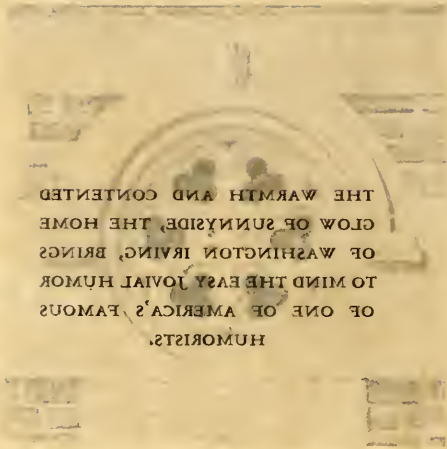






THE WARMTH AND CONTENTED  
GLOW OF SUNNYSIDE, THE HOME  
OF WASHINGTON IRVING, BRINGS  
TO MIND THE EASY JOVIAL HUMOR  
OF ONE OF AMERICA'S FAMOUS  
HUMORISTS.

# *ART OF HUMOR*



# ART OF HUMOR







# Beauties Caught Underwears



Waitin' for  
a street car



What's it to you,  
Nosey?



Time on  
my hands



Three on a match-  
they hope



You're in my  
power - ha, ha, ha



Beauties and  
the beast

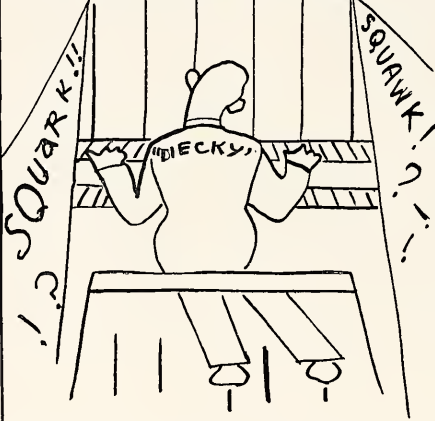
"I JUST couldn't take IT, Baby"



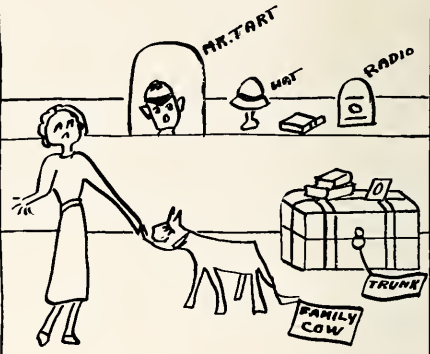
"Let's have another cup of coffee"



"HE'S GOT RYTHMN"



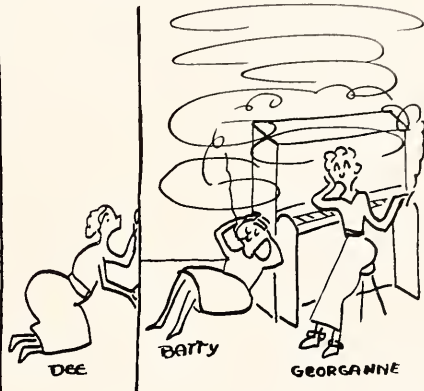
"EVERYTHING I HAVE IS YOURS"



"OOOOH - I'm a Nightowl!"



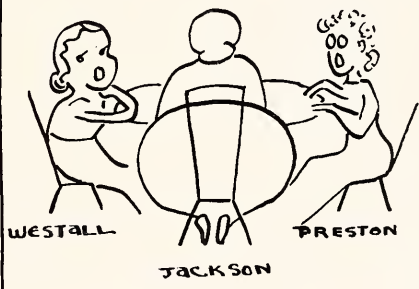
"SMOKE GETS IN YOUR EYES!"



"SOPHISTICATED LADY"



"NOW IT WASN'T TOLD TO ME, I ONLY HEARD"



"Wheels"



# Local Color Masterpieces



The Man  
With the Hoe

Local Color



The Thinker



The Dance of  
the Simps



The Age of Innocence



Venus de I kaow



Marriage à la Mode

## Musings in Class—À la Dorothy Parker

Some Dumb-kluck moved that chair I like—the one with the tall back—this one is too low and the back punches my shoulder blade—so what? Um—what's the Old Duck putting on the board? Oh, not for us, thank Goodness—or whoever takes care of things like that. Ah, my pet antipathy is sweeping in—what's she doing with the Eager Student? Impression, I guess—If this class were just a little bigger I believe I could cut it easy—she never calls the roll.

Wonder if we're going to have a lecture or if we'll get questions—lecture, I guess—yep, I'm right—hope I have enough ink. What's that? Eager Student asking a question?—Now maybe we can push on. The Old Duck must have had that frayed book of notes for forty years—wonder how old she is—not forty—maybe thirty-five—she must have been a good gal in her day—a bit moth eaten looking now—but one does get that way sooner or later—E. S. still talking about her own experiences? I wouldn't have thought that she'd ever had any. What does she care whether or not yew trees keep their leaves all winter—she can't do anything about it if they don't.

Wish that girl behind me would stop kicking my chair—Maybe if I wiggle she'll stop—nope—didn't work—The lecture is progressing now—oh, oh, I've aced the Old Duck this trip because I read the book this lecture's from—all I had last year will be re-hashed. What'll they give us for dinner? Hash? Had that yesterday—about time for spare ribs—

That hat on the creature sitting by the door makes her look like she just dropped down from Mars—Who's that walking down the hall? Oh, that goop who always gouges my ribs in the mail room—Wonder if I'll get any mail today—If I don't somebody'll get a note hot enough to make a fire-eater yelp for Unguentine—What'll I say if I don't get that letter? Dear John—no, that's trite—My Dear John—no, that's too maternal sounding—John, dear,—that's better—How I wish I could see you—Do I want to see him? Of course not—that is—not here anyway—What would we say if he should come? Same old thing—he's absolutely devoid of originality—well, not entirely, because his letters—Oh, darn, the bell—and just as this class was getting interesting.



## LIST OF ADVERTISERS

---

AGNES SCOTT COLLEGE  
J. P. ALLEN CO.  
ATLANTA BAGGAGE & CAB CO.  
WALTER BALLARD OPTICAL CO.  
BAME'S, INC.  
SAMUEL BAUM (Regenstein's)  
HOTEL CANDLER  
CAPITOL THEATRE  
COCA-COLA  
CRICHTON'S BUSINESS COLLEGE  
DALY'S MILLINERY

DECATUR WOMAN'S EXCHANGE  
DENNIS LINDSEY PRINTING CO.  
HARRY F. DOBBS  
EAGER AND SIMPSON  
ESTES SURGICAL SUPPLY CO.  
FOOTE & DAVIES CO.  
COMPLIMENTS OF FRIEND  
GEORGIA THEATRE  
LOUIS ISAACSON, INC.  
NAT KAISER JEWELRY CO.  
KAMPER'S GROCERY

KINGSPORE PRESS  
ONE OF THE GROCERS  
J. K. ORR SHOE CO.  
PARAMOUNT THEATRE  
PHOTO PROCESS ENGRAVING CO.  
PHYSICIANS AND DENTISTS OF  
ATLANTA AND DECATUR  
SELIG COMPANY  
SILHOUETTE TEA ROOM  
STANLEY STUDIO  
W. Z. TURNER LUGGAGE CO.  
VERA BEAUTY SHOP

# AGNES SCOTT COLLEGE



A COLLEGE FOR  
WOMEN



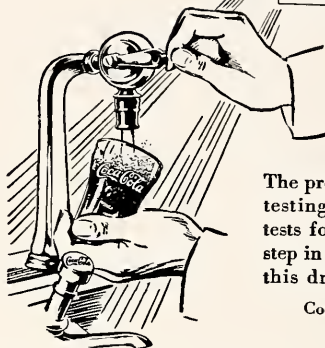
DECATUR, GEORGIA



# Pure as Sunlight



9  
MILLION  
a day



The proof of its *purity* is in the testing. Twenty-two scientific tests for *purity*, covering every step in its preparation, safeguard this drink of natural flavors.

Coca-Cola Co., Atlanta, Ga.

IT HAD TO BE GOOD TO GET WHERE IT IS

Mistress: "Mary, when you wait on the table tonight, please don't wear any jewelry."

Maid: "I haven't anything valuable, ma'am, but thanks for the warning."

## SHORTHAND

Typewriting, Bookkeeping, Filing,  
Mimeographing, Dictaphone, Etc.  
*Correspondence Courses in Shorthand*  
Corner Plaza Way and Pryor Street

**CRICHTON'S**  
BUSINESS COLLEGE, INC.

47 Years  
in Atlanta

Catalog on  
Request

## HARRY F. DOBBS, INC.

◆  
Hotel and Restaurant  
Supplies

◆  
285 PEACHTREE STREET, N. E.

# KAMPER'S

PURE FOOD STORES



53 Years of Quality and Service



Three Stores in Atlanta



"When buying foods insist on having the best"

Nokey: "My uncle in Venice is sending me a gondola. How am I going to play it?"

Bert: "You don't play a gondola! You throw it over your shoulder like a shawl."

COMPLIMENTS

✓ OF ✓

A FRIEND



COMPLIMENTS

✓ OF THE ✓

CAPITOL THEATRE

202 PEACHTREE STREET

SPECIALISTS IN ANNUAL  
PHOTOGRAPHY™



STANLEY  
STUDIOS

Atlanta Georgia



OFFICIAL  
PHOTOGRAPHERS  
FOR  
1934 SILHOUETTE

**Nat Kaiser and Company**

INCORPORATED

**JEWELERS**

3 Peachtree Street

ATLANTA ✧ GEORGIA

EST. 1893

*In Appreciation ✧ ✧*

14 Years of  
Student Patronage

**SILHOUETTE TEA ROOM**

*Anna Young Alumnae House*

Bride: "Don't bring me any more of that horrid milk. What makes it so blue?"

Milkman: "It ain't our fault, lady. It's these long, dull evenings as makes the cows depressed."

✧ ✧ COMPLIMENTS OF ✧ ✧

THE PHYSICIANS  
AND DENTISTS

✧ OF ✧

ATLANTA AND DECATUR



## BALLARD'S

THREE STORES



*It is essential that your optician is  
competent to fill your oculist  
prescription correctly*

### WALTER BALLARD OPTICAL COMPANY

THREE STORES

105 PEACHTREE STREET, N. E.

*Medical Arts Bldg.*

382 PEACHTREE STREET, N. E.

*Doctors' Bldg.*

408 PEACHTREE STREET, N. E.

A T L A N T A

## COLD STORAGE

CALL W.A. 9776

And our messenger will call for your valuable Furs—to be stored in our most Modern Cold Storage Vault where they will be protected from Moths, Heat, Fire, Theft or Burglary. Our Insurance Policy Protects you against any and all loss—for a period of twelve months. In the Fall—Your Furs will be returned in the finest condition due to the Circulation of Cold Air in our Storage Vaults.

**LOUIS ISAACSON, INC.**

FURS OF FASHION

210 PEACHTREE ST., ATLANTA, GA.

## COMPLIMENTS

✓ ✓ OF ✓ ✓

**VERA BEAUTY SHOP**

210 MASONIC TEMPLE

De. 1124

Mrs. Sydenstricker had been lecturing for half an hour on the major prophets and was about half way through the minor ones. At last she paused impressively and said: "And Habbakkuk—where shall we place him?"

At this point Emily McGahee rose and said: "He can have my seat, Mrs. Sydenstricker!"

## Dennis Lindsey Printing Co.

*(Incorporated)*

Commercial Printing  
and Stationery

Phone Dearborn 0976

421 CHURCH ST., DECATUR, GA.

Headquarters ✓ ✓

*for Laboratory Supplies,  
Baker C. P. Chemicals,  
Scientific Equipment*



**Estes Surgical Supply Co.**

ATLANTA ✓ GEORGIA

W. Z. Turner Luggage Co.

Modern Luggage

219 PEACHTREE STREET  
Walnut 6914

Ask for Sport Shoes

*made by*

J. K. ORR SHOE CO.  
ATLANTA GEORGIA

COMPLIMENTS

OF

PARAMOUNT  
THEATRE

Miss Lewis (calling the roll):

"Miss Kirvin—"

No answer.

Miss Lewis: "Miss Kirvin—"

Still no answer.

Miss Lewis: "Poor girl, hasn't she any friends?"

Local and Railway Baggage  
Baggage Transfer The Old Reliable

Atlanta Baggage & Cab Co.

Wa. 0200 Taxi to Town Wa. 3161

MAKE UP A PARTY

FIVE RIDE FOR THE PRICE OF ONE  
2 MILES 30c

Black and White Cab Co.

Wa. 0200 Wa. 3161

Philco, R. C. A. Victor and  
Atwater-Kent Radios

Norge and Leonard Electric Refrigerators  
Victor and Brunswick Records

BAME'S, INC.

107 PEACHTREE STREET

Opposite Piedmont Hotel



PHOTO  
PROCESS

*Engraving Co*

ATLANTA



COMPLIMENTS

✓ OF ✓

GEORGIA THEATRE

Atlanta's  
Favorite

the wise girl

makes a

study of

her clothes

✓ and ✓

shops at

J. P. ALLEN & CO.  
"The Store All Women Know"

PEACHTREE AT CAIN

VISIT . . .

Our College Girl  
Section for Girdles, Brassieres,  
Corselettes, Etc.

EAGER & SIMPSON

24 CAIN STREET, N. E.

Mary Lillian: "I got Greece on the radio last night."

Fidesah: "Well, why don't you wipe it off?"

\* \* \*

Dr. Davidson: "Can anyone tell me what makes the Tower of Pisa lean?"

Alice McCallie: "I don't know or I'd take some myself."

COMPLIMENTS

✓ OF ✓

ONE OF THE GROCERS

✓ who ✓

Supply Your College

THIS BOOK IS CASED IN A

KINGSKRAFT  
COVER

KINGSPORT PRESS

KINGSPORT ✓ TENNESSEE

VISIT THE ↗ ↘  
CANDLER HOTEL

◆  
Convenient to  
Agnes Scott

◆  
150 E. Ponce de Leon Avenue  
DECATUR ↗ GEORGIA

DEARBORN  
3 7 1 5

FUR COLD STORAGE ↗ FUR REMODELING  
*IF YOU ARE LOOKING FOR*  
FURS OF QUALITY  
... SEE ...

SAMUEL BAUM  
at Regenstein's Peachtree Store  
FUR CLEANING

THE SELIG COMPANY

*Manufacturers*

ATLANTA ↗ GEORGIA

DISINFECTANTS, INSECTICIDES

SANITARY PRODUCTS

IN YOUR SERVICE SINCE 1896

Soph: "You want to keep your eyes open around here today."

Frosh: "What for?"

Soph: "Because people will think you're a fool if you don't."

The Decatur Woman's  
Exchange and Flower Shop

*Flowers ↗ Gifts ↗ Hose*

PARTY ORDERS

DeKalb Theatre Building

DEARBORN 3343

D A L Y ' S  
M I L L I N E R Y

Now with Rich's

ATLANTA ↗ GEORGIA

SUCCESSFUL ANNUALS  
REQUIRE THE SERVICES  
OF EXPERIENCED AND  
EXPERT CRAFTSMEN

## FOOTE & DAVIES COMPANY

HAVE THESE SERVICES

*And* —————

*the most necessary components  
of all really fine books including*

A SPECIAL ANNUAL  
SALES AND SERVICE  
ORGANIZATION

CREATIVE DESIGNERS  
AND LAYOUT ARTISTS

ABUNDANT EQUIPMENT  
MODERN AND COMPLETE

PRICES REPRESENTING  
MAXIMUM IN VALUE



*Atlanta  
Georgia*



