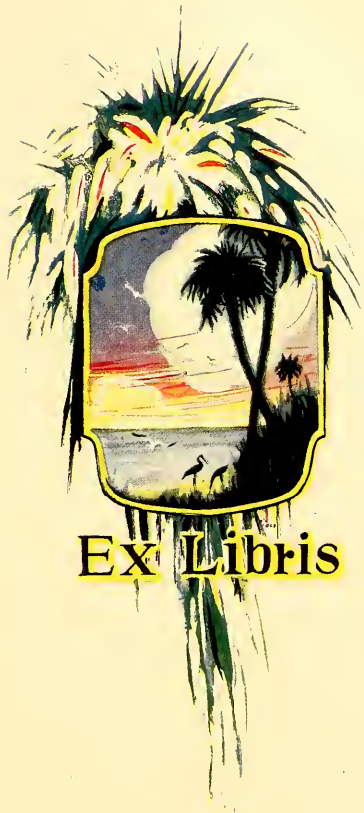


Digitized by the Internet Archive
in 2010 with funding from
Lyrasis Members and Sloan Foundation

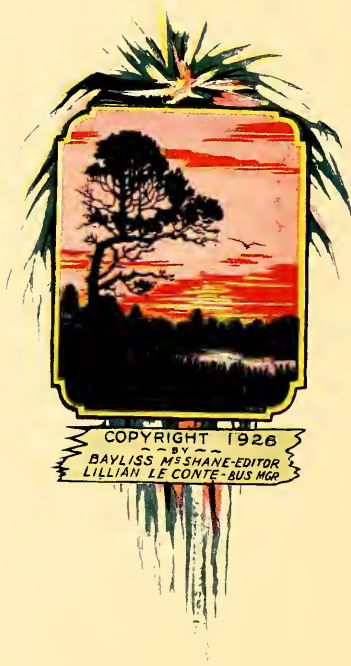
<http://www.archive.org/details/silhouette192825agne>



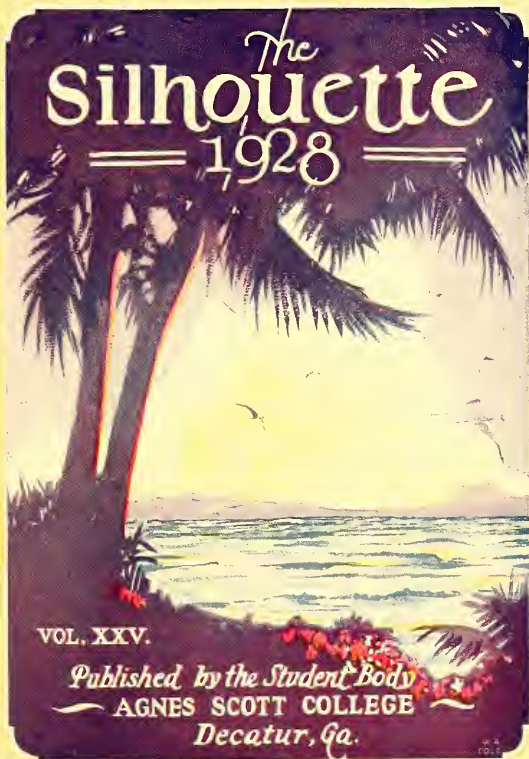
EX LIBRIS



**"I'M A HOTTENTOT
FROM AGNES SCOTT"**



COPYRIGHT 1926
BY
BAYLISS MESHANE-EDITOR
LILLIAN LE CONTE-BUS MGR



65899

DEDICATION

—
TO

DOCTOR CLEO HEARON

Who by her intellectual attainments brought honor to the college; who by her constant efforts helped Agnes Scott to take her place among the foremost colleges, and who commanded the love and respect of the students, we affectionately dedicate this volume of
The Silhouette.



FOREWORD

IN compiling this volume of
The Silhouette we have
endeavored to include all
those things that would build up a
complete record of the activities
and events of college life, and
especially those of this year. If, as
you turn these pages, you would
have happy memories of the time
when you were
a Hottentot at
Agnes Scott, then
we would be
content.



CONTENTS

COLLEGE

CLASSES

ROTOGRAVURE

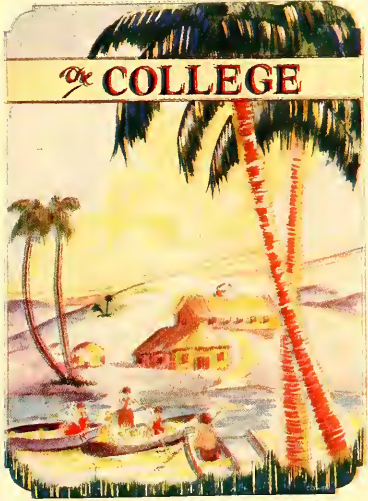
ORGANIZATIONS

ACTIVITIES

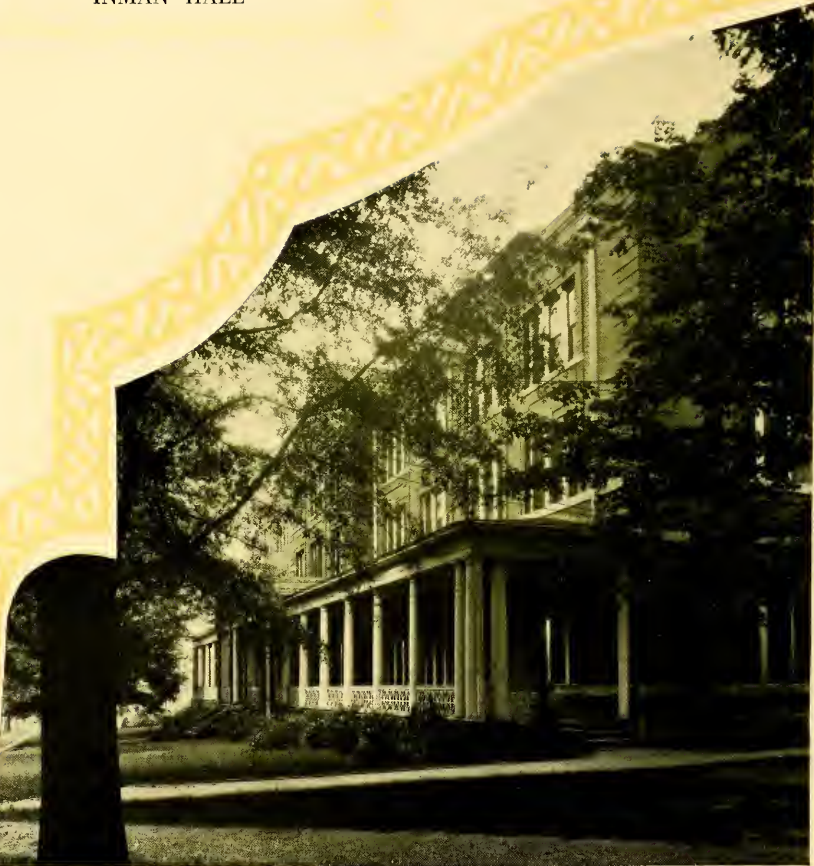
FEATURES

HUMOR





INMAN HALL



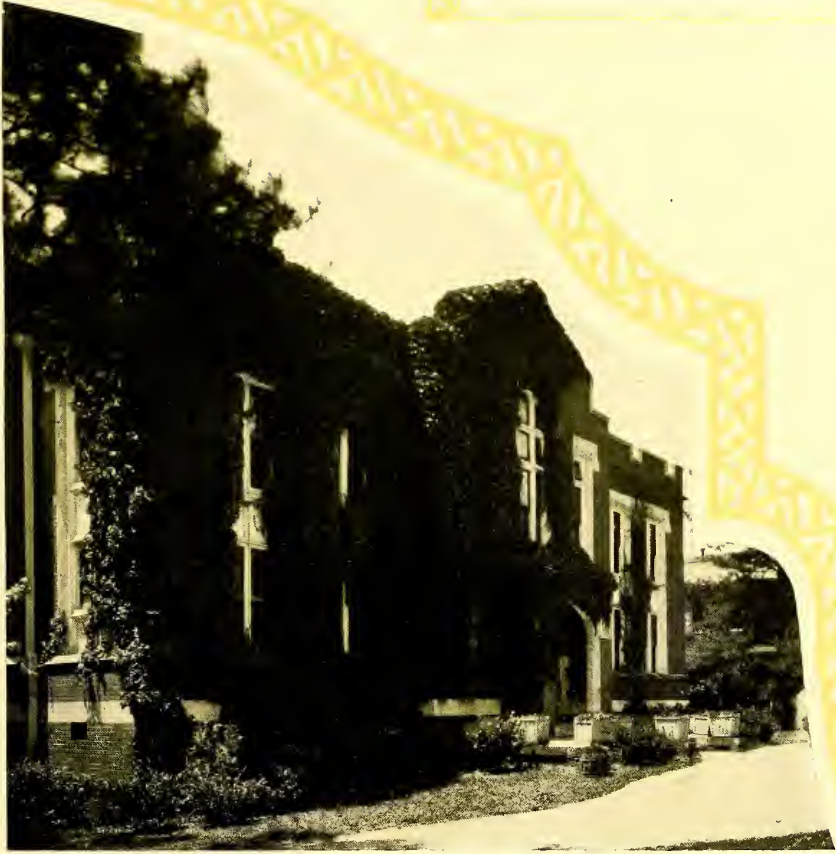
MAIN HALL



ALUMNAE HOUSE



CARNEGIE LIBRARY



REBEKAH SCOTT HALL



BUCHER SCOTT GYMNASIUM

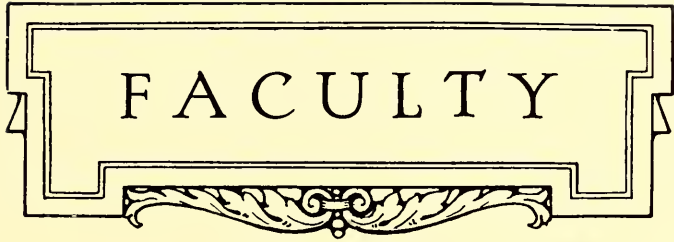


THE GATE



PHILOSOPHY HALL





FACULTY

A decorative rectangular frame with a double-line border. The top and bottom edges are slightly recessed. The word "FACULTY" is centered in a serif font. Below the text is a decorative flourish consisting of symmetrical, leaf-like scrollwork.



DR. J. R. MCCAIN, *President*

The SILHOUETTE



MISS NANNETTE HOPKINS, *Dean*

Board of Trustees

J. K. ORR, <i>Chairman</i>	Atlanta
C. M. CANDLER	Decatur
J. T. LUPTON	Chattanooga, Tenn.
W. C. VEREEN	Moultrie, Ga.
J. S. LYONS	Atlanta
F. M. INMAN	Atlanta
MRS. SAMUEL M. INMAN	Atlanta
MRS. C. E. HARMAN	Atlanta
MISS MARY WALLACE KIRK	Tuscumbia, Ala.
GEO. E. KING	Atlanta
D. P. McGEACHY	Decatur
R. O. FLINN	Atlanta
H. T. McINTOSH	Albany, Ga.
J. R. McCAIN	Decatur
J. J. SCOTT	Decatur
W. A. BELLINGRATH	Montgomery, Ala.
D. H. OGDEN	Mobile, Ala.
W. R. DOBYNS	Birmingham, Ala.
NEAL L. ANDERSON	Savannah, Ga.
MRS. D. B. DONALDSON	Atlanta
G. SCOTT CANDLER	Decatur
P. T. SHANKS	Selma, Ala.
E. D. BROWNLEE	Sanford, Fla.
C. T. PAXON	Jacksonville, Fla.
J. BULOW CAMPBELL	Atlanta
J. R. CUNNINGHAM	Gainesville, Fla.
MISS NANNETTE HOPKINS	Decatur

Officers of Administration

JAMES ROSS McCAIN, A.M., Ph.D., LL.D.

President

NANNETTE HOPKINS, Pd.D.

Dean

S. GUERRY STUKES, B.D., A.M.

Registrar

MARY FRANCES SWEET, M.D.

Resident Physician

R. B. CUNNINGHAM, B.S.

Business Manager

J. C. TART

Treasurer

JENNIE E. SMITH

Secretary to the President

CARRIE SCANDRETT, B.A.

Secretary to the Dean

EMMIE J. ANSLEY

Secretary to the Registrar

HARRIET V. DAUGHERTY

Resident Nurse

MARJORIE CAUGHON

Assistant Nurse

EMMA E. MILLER

FRANCES M. CALHOUN

Matrons

JENNIE DUNBAR FINNELL

LENA DAVIES

Housekeepers

Officers of Instruction and Government 1927-1928

JAMES ROSS MCCAIN, A.M., PH.D., LL.D.
University of Chicago, Columbia University, Davidson College
President

NANNETTE HOPKINS, Ph.D.
Oglethorpe University
Dean

M. LOUISE MCKINNEY
Professor of English

LILLIAN S. SMITH, A.M., PH.D.
Syracuse University, Cornell University
Professor of Latin

MARY FRANCES SWEET, M.D.
Syracuse University, New England Hospital, Boston
Professor of Hygiene

SAMUEL GUERRY STUKES, B.A., A.M., B.D.
Davidson College, Princeton University, Princeton Seminary
Professor of Philosophy and Education
(The George W. Scott Memorial Foundation)

ALMA SYDENSTRICKER, PH.D.
Wooster University
Professor of English Bible

*CLEO HEARON, PH.B., M.A., PH.D.
University of Chicago
Professor of History

ROBERT B. HOLT, A.B., M.S.
University of Wisconsin, University of Chicago
Professor of Chemistry

CHRISTIAN W. DIECKMANN, F.A.G.O.
Fellow of the American Guild of Organists
Professor of Music

MARY STUART MACDOUGALL, B.A., M.S., PH.D.
Randolph-Macon Woman's College, University of Chicago
Columbia University
Professor of Biology

†EMILY E. HOWSON, A.B., A.M.
Bryn Mawr College
Professor of Physics and Astronomy

ALICE LUCILE ALEXANDER, B.A., M.A.
Agnes Scott College, Columbia University
Professor of Romance Languages

* Died January 11, 1928.

† On leave of absence 1927-1928.

SILHOUETTE

JAMES M. WRIGHT, B.A., PH.D.
William Jewell College, Johns Hopkins University
Professor of Economics and Sociology

GEORGE P. HAYES, B.A., M.A., PH.D.
Swarthmore College, Harvard University
Professor of English

HENRY A. ROBINSON, B.S., C.E., M.A.
University of Georgia, Johns Hopkins University
Acting Professor of Mathematics

HELEN GILROY, B.A., M.A.
Bryn Mawr College
Acting Professor of Physics and Astronomy

CHARLES A. LOGAN, B.A., B.D., D.D.
Centre College, Presbyterian Theological Seminary
Westminster College
Acting Professor of Bible

FLORENCE E. SMITH, B.A., M.A.
Westhampton College, University of Chicago
Acting Professor of History

CATHERINE TORRANCE, B.A., M.A., PH.D.
University of Chicago
Associate Professor of Greek and Latin

FRANCES K. GOOCH, PH.B., A.M.
University of Chicago, Graduate Boston School of Expression
Associate Professor of English

*EMMA MAY LANEY, M.A.
Columbia University
Associate Professor of English

ISABEL F. RANDOLPH, B.A., B.S.
Barnard College, Teachers' College
Associate Professor of Physical Education

EDITH MURIEL HARN, PH.D.
Johns Hopkins University
Associate Professor of German and Spanish

*LOUISE HALE, A.B., A.M.
Smith College, University of Chicago
Associate Professor of French

ELIZABETH F. JACKSON, A.B., PH.D.
Wellesley College, University of Pennsylvania
Associate Professor of History

EMILY S. DEXTER, B.A., PH.D.
Ripon College, University of Wisconsin
Associate Professor of Psychology and Education

*On leave of absence 1927-28.

SILHOUETTE

LLEWELLYN WILBURN, B.A., M.A.
Agnes Scott College, Columbia University
Associate Professor of Physical Education

AUGUSTA SKEEN, B.A., M.S.
Agnes Scott College, Emory University
Assistant Professor of Chemistry

MARAGARET PHYTHIAN, B.A., M.A.
Agnes Scott College, University of Cincinnati
Assistant Professor of Romance Languages

LESLIE J. GAYLORD, B.A., M.S.
Lake Erie College, University of Chicago
Assistant Professor of Mathematics

ANNIE MAY CHRISTIE, M.A.
Columbia University
Assistant Professor of English

*MARTHA STANSFIELD, B.A., M.A.
Agnes Scott College, University of Chicago
Assistant Professor of Latin

RUTH JANETTE PIRKLE, B.A., M.S.
Agnes Scott College, Emory University
Assistant Professor of Biology

HELEN EAGLESON, M.S., PH.D.
University of Washington, Johns Hopkins University
Assistant Professor of Psychology

MARY WESTALL, A.B., M.A., PH.D.
Randolph-Macon Woman's College, Columbia University, University of Chicago
Assistant Professor of Botany

GLADYS H. FREED, A.B., M.A., PH.D.
University of Pittsburg, University of Chicago
Assistant Professor of Latin and Greek

FLORENCE EDLER, PH.B., M.A.
University of Chicago
Assistant Professor of History

MARGARET BLAND, B.A., M.A.
Agnes Scott College, University of North Carolina
Assistant Professor of French

CHARLOTTE HAMMOND, B.A., M.A.
Agnes Scott College, Chicago University
Acting Assistant Professor of Latin

NAN B. STEPHENS
Lecturer in Play Writing

JANEF PRESTON, B.A.
Agnes Scott College
Instructor in English

*On leave of absence 1927-28.

VIVIAN LITTLE, B.A.
Agnes Scott College
One Year at Sorbonne in Paris
Acting Instructor in French

ROBERTA J. HOLLINGSWORTH, B.A.
Goucher College
Instructor in Spanish

ETHEL PIKE, M.A.
Emory University
Instructor in Psychology

ESTELLE NORTH, B.S.
University of Wisconsin
Assistant in Physical Education

ELIZABETH CHEATHAM, B.A.
Agnes Scott College
Assistant in English

ELIZABETH LYNN, B.A.
Agnes Scott College
Assistant in Physics

LUCILE CALDWELL, B.A.
Agnes Scott College
Assistant in Biology

MARGARET WHITINGTON, B.A.
Agnes Scott College
Assistant in Chemistry

GRACE STRAUSS, B.A.
University of Georgia
Assistant in Mathematics

CAROLINA McCALL, B.A.
Agnes Scott College
Assistant in English

HELEN LEWIS, B.A.
Agnes Scott College
Fellow in History

LAMAR LOWE, B.A.
Agnes Scott College
Fellow in Latin

FRANCES RAINEY, B.A.
Agnes Scott College
Fellow in Chemistry

LOUISE GARLAND LEWIS
University of Chicago, University of Paris
Art Institute Chicago, Academie Julian, Ecole Delacluse
Art and Art History

The SILHOUETTE

LEWIS H. JOHNSON
Student of William Nelson Burritt, New York
Alexander Heinneman, Berlin
Arthur J. Hubbard, Boston
Voice

MARY OGILVIE DOUGLAS
Graduate Mueller Violin School
Violin

GUSSIE O'NEAL JOHNSON
Certificate in Voice and Piano, Agnes Scott College
Student New York and Berlin
Assistant in Voice

ELIZABETH SNOW TILLY
Graduate Carnegie Library School of Atlanta
Assistant Librarian

ROSALTHA SANDERS
ELIZABETH WALLACE
LUCY GRIER
SARAH MCFADYEN
Undergraduate Assistants in Biology

EVANGELINE PAPAGEORGE
ESTHER RICE
EDNA VOLBERG
Undergraduate Assistants in Chemistry

MARY JANE GOODRICH
IRENE LOWRANCE
IONE GUETH
FRANCES CRAIGHEAD
Undergraduate Assistants in Latin

GLADYS AUSTIN
LUCILE BRIDGMAN
HUDA DEMENT
LUCY GRIER
NELL HILLHOUSE
ELAINE JACOBSEN
Undergraduate Assistants in the Library

ELIZABETH ALLGOOD
MARY WALLACE ANTHONY
THERESE BARKSDALE
MARY RAY DOBYNS
ELIZABETH REID
Gymnasium Music
ESTHER NISBET
Chapel Attendance

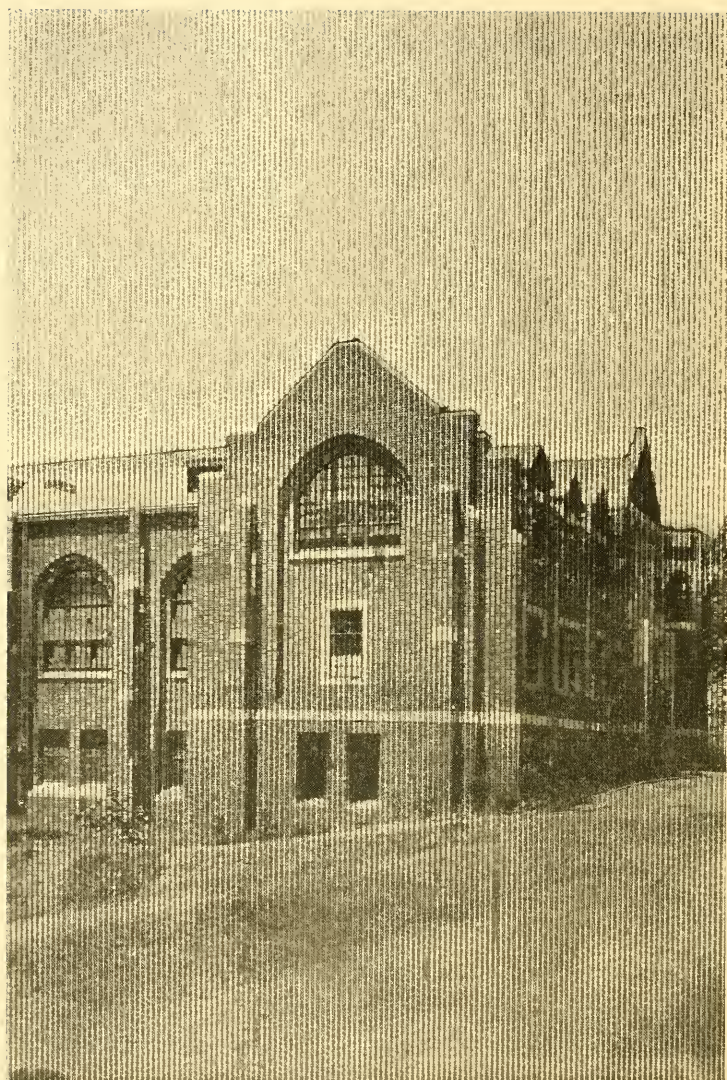
In Memoriam

Cleo Hearon

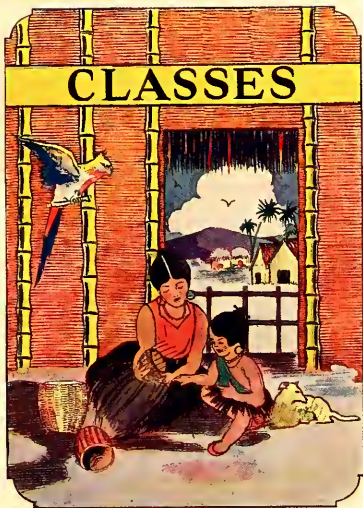
FOR TEN YEARS HEAD OF
THE DEPARTMENT OF
HISTORY

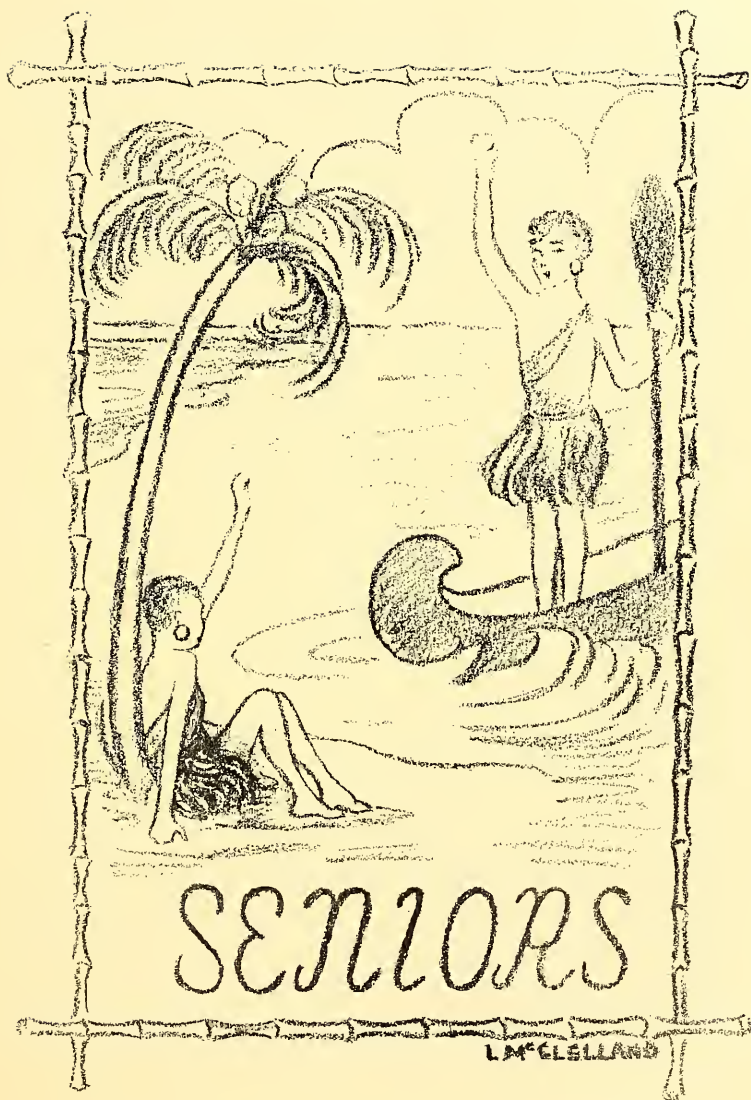
October 27, 1879

January 11, 1928



CLASSES





SENIORS

L. McCLELLAND

Senior Class



MARY BELL McCONKEY

JOSEPHINE WALKER



HUDA DEMENT

COLORS:

Blue and White

OFFICERS:

MARY BELL McCONKEY *President*

JOSEPHINE WALKER *Vice-President*

HUDA DEMENT . . *Secretary and Treasurer*

MISS EAGLESON } . . . *Faculty Members*
MISS BLAND }

SILHOUETTE



REBEKAH SCOTT, *Mascot*



HARRIET ALEXANDER
Augusta, Georgia

Major: History.
Bible Club (2, 3, 4); Biology Club (3);
Cotillion Club (4); International Relations Club (4); Classical Club (1); Fire Lieutenant (2, 4).

SALLIE ABERNETHY
Winter Haven, Florida

Major: History.
Bible Club (2, 3); International Relations Club (4); Orchestra (4); Y. W. C. A. Bulletin Board Committee (1), Music Committee (4).

MARY ELIZABETH ALLGOOD
Covington, Georgia

Major: English.
Blackfriars (2, 3, 4), Vice-President (3, 4).



MIRIAM LOUISE ANDERSON
Winston-Salem, North Carolina

Major: Psychology.

A. S. Club; Hoasc; Agonistic Reporter (4); Y. W. C. A.: Poster Committee (1). World Fellowship Committee (2). Treasurer (3). Vice-President (4); Biology Club (3); Bible Club (2, 3); Fire Captain (1); Class Hockey (1, 3, 4); Varsity (4), Class Basketball (1, 2, 3, 4), Class Manager (2), Captain (3); Track, Class Manager (3).

LEILA WARREN ANDERSON
Macon, Georgia

Major: Latin.

A. S. Club; Hoasc; Phi Beta Kappa; Class Chairman (1), President (1), Cheer Leader (2, 4); Student Government Executive Committee: Lower House (1, 2), Class Representative (3); Y. W. C. A.: Student Industrial Commission (1), Chairman of World Fellowship Committee (2), Secretary (3), President (4); International Relations Club (2); League of Women Voters (3, 4); Classical Club (2, 3, 4); May Day (1); Class Basketball (1, 2, 3); Class Baseball (1), Varsity (2); Class Swimming (2, 3); Hockey Squad (1, 3).

EUNICE BALL
Decatur, Georgia

Major: Mathematics.

Agnesi Mathematics Club (2, 3, 4); Bible Club (2, 3).



FRANCES CAMPBELL BROWN
Staunton, Virginia

Major: Chemistry.

Phi Beta Kappa; Senior Council;
French Club (2, 3, 4); Chemistry Club
(2, 3, 4), Chairman Program Committee
(4); Virginia Club (1, 2, 3, 4), Pres-
ident (4); Class Hockey (1, 4).

JIMMIE MYRTLE BLEDSOE
Atlanta, Georgia

Majors: English, French.

Phi Beta Kappa; Aurora Staff (2, 3);
Folio (1, 2); Poetry Club (2, 3, 4);
French Club (4); B. O. Z. (4).

MARTHA M. BROWN
Mount Ulla, North Carolina

Major: Chemistry.

Chemistry Club (2, 3, 4); Blackfriars
(3, 4); Bible Club (3, 4).



VIRGINIA CARRIER
Asheville, North Carolina

Major: History.

Hoasc; Class Secretary and Treasurer (3); Lower House (4); Senior Council; Agonistic Athletic Editor (3); Y. W. C. A.: World Fellowship Committee (2, 3, 4); International Relations Club (2, 3, 4), Vice-President (4); League of Women Voters (3); Pen and Brush Club (4); Secretary Athletic Association (4); Hockey, Class Team (1, 2, 3, 4), Varsity (3); Class Basketball; Class Baseball; Class Team (1, 3), Class Manager (2), College Manager (3).

MARY ESTELLE BRYAN
Miami, Florida

Major: Biology.

Chemistry Club (3); Biology Club (2, 3, 4); Bible Club (2, 3); Hiking Club (1, 2).

ELIZABETH COLE
Atlanta, Georgia

Major: French.

Student Government Executive Committee; Class Representative (3, 4); Senior Council; Aurora Advertising Manager (2); Y. W. C. A.: Social Committee (3), Evening Watch Committee (3); French Club (2, 3, 4); Treasurer (2), Secretary and Treasurer (3); League of Women Voters (3); Bible Club (2, 3); Handbook Committee (2); May Day (1, 2, 3, 4).

SILHOUETTE



PATRICIA HARRIET COLLINS
Atlanta, Georgia

Major: History.
Day Student Representative to Executive
Committee (4); College Council (4);
Senior Council (4); Pi Alpha Phi
(2, 3, 4), Vice-President (4); International
Relations Club (4).

DOROTHY VIRGINIA COLEMAN
Savannah, Georgia

Major: English, French.
French Club (3, 4); Hiking Club (1,
2, 3, 4).

LUCY MAI COOK
Minden, Louisiana

Major: History, Latin.
Silhouette Photographic Editor (4);
Y. W. C. A. Social Service Committee
(3, 4); Classical Club (2, 3, 4), Secretary
and Treasurer (3), Chairman Program
Committee (4); French Club (2,
3); International Relations Club (4).



FRANCES CRAIGHEAD
Atlanta, Georgia

Major: Latin.

Phi Alpha Phi (2, 3, 4); Alternate Intercollegiate Debater (3), Debating Council (4); French Club (4); President League of Women Voters (4); Classical Club (2, 3, 4), President (4); International Relations Club (4); May Day (4).

EMILY DASHER COPE
Savannah, Georgia

Major: English, French.

Class Stunt (1, 2); Glee Club (1); Cotillion Club (1, 2, 3, 4), Vice-President (4); French Club (2, 3, 4); Poetry Club (3, 4); Lecture Association (1, 4), President (4); Class Swimming Team (2, 3).

MARY CABANISS CRENSHAW
Atlanta, Georgia

Major: History.

A. S. Club; Class Stunt Committee (1); Advertising Manager of Silhouette (3); Agonistic Reporter (3, 4); Y. W. C. A. Social Committee (3); Cotillion Club (3, 4); Biology Club (1); Classical Club (1, 2); Bible Club (2, 3); Chemistry Club (2, 3); Glee Club (1, 2, 3, 4); Choral Society (1, 2, 3, 4); Pen and Brush Club (4); League of Women Voters (3, 4); International Relations Club (3, 4); May Day (3); Basketball Squad (1, 3, 4), Class Manager (4); Hockey; Class Team (1), Varsity (4); Swimming (3, 4); Water Polo (3); Class Baseball (4).



BETSEY DAVIDSON
Lexington, Virginia

Major: History.
Bible Club (1, 2); Classical Club (2,
3); Virginia Club (1, 2, 3, 4).

SARAH KATHERINE CURRIE
Parkton, North Carolina

Major: Biology.
Biology Club (1, 2, 3, 4); Chemistry
Club (4); Bible Club (2, 3); Classical
Club (1); Glee Club (2, 3, 4); North
Carolina Club (1, 2); Fire Lieutenant
(3); Proctor Board (3); Orchestra (1, 2,
3, 4), Secretary (4); Special Chorus (4);
Choral Society (2, 3, 4); Violin Ensem-
ble (1, 2).

ELSIE BISCHOFF DAVIS
Atlanta, Georgia

Major: Mathematics.
Vice-President of Day Students (4);
Agnesi Mathematics Club (2, 3, 4);
French Club (2, 3, 4); Class Swimming
Team (2); Bible Club (2, 3).

SILHOUETTE



MARY RAY DOBYNS

Birmingham, Alabama

Major: French.

Hoase; Senior Council; Agonistic Reporter (3); League of Women Voters (3, 4); International Relations Club (2, 3); French Club (3, 4); K. U. B. (2, 3, 4); Y. W. C. A. Chairman Music Committee (4); Fire Chief (4); May Day Committee (3, 4); Orchestra (1, 2, 3, 4). Leader (2); Hockey Squad (1, 3); Basketball Squad (2, 3, 4); Class Swimming Team (2, 3, 4); Class Track (3).

HUDA DEMENT

Wartrace, Tennessee

Major: Mathematics, Physics.

Class Secretary and Treasurer (4); Agnesi Mathematics Club (1, 2, 3, 4), Secretary and Treasurer (3); Chairman of Auditing Committee (4).

MARY JEWETT DOYAL

Rome, Georgia

Majors: English, French.

Bible Club (3); Classical Club (1); Biology Club (3); Orchestra (1, 2); May Day (3).

The SILHOUETTE



HELEN FOX
Norristown, Pennsylvania

Major: Mathematics.
Agnesi Mathematics Club (2, 3, 4);
Classical Club (4); May Day (2, 3);
Fire Lieutenant (3).

CAROLYN HALL ESSIG
Atlanta, Georgia

Major: English.
Hoast; Member of Lower House (4);
Class Stunt Committee (1); Y. W. C. A.;
Social Committee (2), Evening Watch
Committee (3); Agonistic Reporter (1),
Exchange Editor (2), Assistant Editor
(3), Editor-in-Chief (4); Folio Club (1,
2), Secretary (2); K. U. B. (1, 2), Sec-
retary (2); Pi Alpha Phi; Twelve (2, 3),
Intercollegiate Debater (4); B. O. Z. (2,
3, 4); Secretary (3), President (4);
Playwriters Club, Secretary (4); Lecture
Association (4); Author of May Day
Scenario (2, 4).

BETTY FULLER
Havana, Cuba

Major: History.
Pen and Brush Club (3, 4); Interna-
tional Relations Club (4); Bible Club
(1); Glee Club (1); Classical Club (1).



IRENE GRACE GARRETSON
Decatur, Georgia

Major: Mathematics.
Agnesi Mathematics Club (2, 3, 4);
Bible Club (3, 4); May Day (2, 3).

MARY ELOISE GAINES
Atlanta, Georgia

Major: English.
Class Stunt (2); Assistant Business
Manager of Silhouette (2); Lecture Asso-
ciation (2); May Day (1, 2, 3, 4); Grand-
daughters' Club (1, 2, 3, 4), Secretary
(3); French Club (2, 3, 4); Cotillion
Club (4).

MARGARET GERIG
Ocala, Florida

Major: History.
Blackfriars (3, 4); International Rela-
tions Club (4); Bible Club (2, 4); Clas-
sical Club (1); Pi Alpha Phi (4); Choral
Society (4).



LOUISE GIRARDEAU
Atlanta, Georgia

Major: French.

Agonistic, Reporter (2, 3), Circulation Manager (4); Blackfriars (2, 3, 4), Property Manager (4); French Club (2, 3, 4); Program Manager (4), President (4); K. U. B. (3, 4), Secretary and Treasurer (4); Pen and Brush Club (3, 4); Hikers' Club (1, 2); Choral Club (2, 3); Chemistry Club (4); Poster Committee (1, 2); Fire Captain (4); May Day (1, 2, 3, 4).

HATTIE GERSHCOW
Atlanta, Georgia

Major: Mathematics.

Classical Club (1, 2); Agnesi Mathematics Club (2, 3, 4); Bible Club (3, 4); Hikers' Club (1).

SARA PRISCILLA GLENN
Gastonia, North Carolina

Major: English.

A. S. Club; Member of Lower House (1, 3); Business Manager of Aurora (4); Agonistic Reporter (2, 3, 4); Blackfriars: Associate Member (2), Assistant Lighting Manager (3), Lighting Manager (4); Coillion Club (4); Bible Club (2, 4); Hikers' Club (1, 2); Y. W. C. A. Social Committee (3); Proctor Board (1); Tennis Class Manager (4); Hockey, Class Squad (3), Class Team (4); Baseball, Class Team (2, 3), Class Manager (3), Varsity (3).



MYRA OLIVE GRAVES
Nashville, Tennessee

Major: French.

French Club (3, 4); International Relations Club (3); Agnesi Mathematics Club (2); Classical Club (1); Bible Club (1); Hikers' Club (2); League of Women Voters (3); Proctor Board (4); Y. W. C. A. Collector (3); Fire Lieutenant (1); May Day (2).

EUGENIA GOBERE
Atlanta, Georgia

Major: Chemistry.

A. S. Club; Biology Club (1); Chemistry Club (1, 2, 3, 4); Bible Club (2, 3); Hockey, Class Team (1, 3); Baseball: Class Team (1, 2, 3), Varsity (2), Captain (2).

ELIZABETH HEMPHILL GRIER
Suchowfu, Ku, China

Major: Bible.

A. S. Club; Hoase; Phi Beta Kappa; Assistant Editor of Silhouette (3, 4); Athletic Board, Track Manager (4); Class Hockey (3), Class Basketball (3), Class Track (3, 4); Tennis, Class Champion (3).

The SILHOUETTE



MURIEL GRIFFIN
Covington, Georgia

Major: Latin.
Classical Club (2, 3, 4); Bible Club
(2, 3).

LUCY HENRIETTA GRIER
Suchowfu, Ku, China

Major: Biology.
Chemistry Club (4); Biology Club (2,
4); Library Assistant (4); Biology As-
sistant (4); Secretary of Atlanta Student
Volunteer Union (2); Secretary of Agnes
Scott Student Volunteer Union (1, 4).

FRANCES LEE HARGIS
Atlanta, Georgia

Major: English.
President of Day Students (4); Senior
Commission (4); Chairman of Day Stu-
dent Finance Committee (3); Blackfriars
(2, 3, 4); Playwriters' Club (4); Base-
ball, Class Team (1, 2, 3, 4); Hockey,
Class Team (2, 3, 4).

The SILHOUETTE



NELL HILLHOUSE
Waynesboro, Georgia

Major: History.

Hoasc; Class Representative to Executive Committee (1, 2); Treasurer of Student Government Association (3), First Vice-President (4); Associated Charities Committee (2); International Relations Club (3, 4); Vice-President (3), Executive Board (3, 4); Glee Club (1).

ANNIE DOROTHY HARPER
Albany, Georgia

Major: History.

Student Treasurer (4); Agonistic Reporter (4); Y. W. C. A., Chairman of Finance Committee (3); Folio (1, 2); Classical Club (2, 3, 4), Vice-President (4); Bible Club (3, 4); Proctor Board (2); Basketball, Class Squad (1), Class Team (3); Class Track Squad (3).

MARY MACKEY HOUGH
Lancaster, South Carolina

Major: English.

Class Cheer Leader (1); Class Stunt (1, 2); Cotillion Club (1, 2, 3, 4), Secretary and Treasurer (3), Vice-President (4); Bible Club (2, 4); League of Women Voters (4); Proctor Board (3, 4); May Day (1, 2); Athletic Association: Vice-President (4), School Volley-ball Manager (4), School Tennis Manager (4); Swimming: Class Team (2, 3, 4), Class Manager (3), Varsity (3); Baseball, Class Team (2, 3, 4), Captain (3, 4); Water Polo, Class Team (2, 3, 4).



ELIZABETH HARDY HUDSON
Atlanta, Georgia

Major: Chemistry.

A. S. Club; Chemistry Club (2, 3, 4);
Red Headed Club (4); Basketball, Class
Team (1, 2, 3); Baseball; Class Team (1).
Varsity (2, 3, 4), Record Baseball Throw
(3); Class Track Team (3).

JOSEPHINE PHIFER HOUSTON
Charlotte, North Carolina

Major: English.

Cotillion Club (3, 4); Bible Club (2,
3); Assistant Photographic Editor of Sil-
houette (3); North Carolina Club (1, 2);
Biology Club (2); League of Women
Voters (4); Proctor Board (2, 3, 4);
Evening Watch Committee (3); May Day
(1, 2).

ALICE LOUISE HUNTER
Atlanta, Georgia

Major: Mathematics.

Agnesi Mathematics Club (2, 3, 4);
Classical Club (2, 3, 4); Bible Club (3,
4).

SILHOUETTE



ANAIS CAY JONES

Atlanta, Georgia

Major: History.

Class Stunt (2); Cotillion Club (4); Granddaughters' Club (1, 2, 3, 4), Vice-President (4); International Relations Club; Secretary and Treasurer (3), President (4); Classical Club (1); Bible Club (3); May Day (1, 2, 3, 4); Class Hockey Squad (1).

MILDRED LOUISE JENNINGS

Augusta, Georgia

Major: Biology.

Classical Club (2); Bible Club (2, 3, 4); Biology Club (2, 3, 4).

HILDA KALMON

Albany, Georgia

Major: Psychology.

A. S. Club; Cotillion Club (2, 3, 4); Bible Club (2, 3); League of Women Voters (4); May Day (1, 2); Athletic Board (3); Swimming: Class and Varsity (2, 3, 4), Class Manager (2), College Manager (3); Class Basketball (3, 4); Baseball, Class Team (2, 3), Varsity (2); Water Polo (2, 3, 4).



VERA WALLER KAMPER
Atlanta, Georgia

Major: English.

Sophomore Commission; Senior Council; Class Stunt (2); Agonistic Reporter (3, 4); Glee Club (3, 4), Publicity Manager (4); Cotillion Club (4); Granddaughters' Club (1, 2, 3, 4); Special Chorus (4); Choral Society (3, 4); May Day (1, 2, 3, 4).

KATHRYN KALMON
Albany, Georgia

Major: Psychology.

A. S. Club; Senior Council; Cotillion Club (2, 3, 4); League of Women Voters (4); Bible Club (3, 4); Biology Club (3); May Day (1, 2); Swimming; Class Team (2, 3, 4), Varsity (2, 3, 4); Water Polo (2, 3, 4).

MARGARET LOUISE KEITH
Greenville, South Carolina

Major: Latin.

Sophomore Commission; Member Lower House (4); College Council (4); Y. W. C. A.: Industrial Commission (1, 2, 3, 4), Undergraduate Representative (3, 4); Fire Captain (2); Blackfriars (2, 3, 4); Pi Alpha Phi (3, 4), Debating Council (4); Classical Club (1, 2, 3, 4); League of Women Voters (3, 4).

SILHOUETTE



EMILY COLEMAN KINGSBERY
Atlanta, Georgia

Major: French.

Stunt Committee (1); Aurora: Assistant Editor (3), Editor-in-Chief (4); Agonistic Staff (1, 2, 3); Folio Club (1, 2); K. U. B. (2); Poetry Club (2, 3, 4). President (4); B. O. Z. (2, 3, 4); French Club (3, 4); Orchestra (1, 2); May Day (1, 3, 4); Hockey Class Team (3).

MARY HORTENSE KING
Fort Gaines, Georgia

Major: Latin.

Classical Club (1, 2, 3, 4); Bible Club (3, 4).

ANNA ANGIER KNIGHT
Atlanta, Georgia

Major: History.

Cotillion Club (3, 4); French Club (2, 3, 4); International Relations Club (3, 4); May Day (3, 4).

SILHOUETTE



VIRGINIA MAY LOVE
Gastonia, North Carolina

Major: Mathematics.

Agonistic Assistant Circulation Manager (4); Agnesi Mathematics Club (3, 4); Bible Club (2, 3); Classical Club (3); Class Track Team (3).

LILLIAN KING LeCONTE
Atlanta, Georgia

Major: French.

Silhouette: Assistant Business Manager (3), Business Manager (4); Aurora Advertising Manager (2); Agonistic Reporter (2, 3, 4); Blackfriars (2, 3, 4); Cotillion Club (2, 3, 4); Bible Club (3, 4); French Club (2, 3, 4); Granddaughters' Club (2, 3, 4), President (3); Glee Club (1, 2, 3, 4), Vice-President (3); Choral Society (1, 2, 3, 4); Special Chorus (2, 3, 4); May Day (2); Class Hockey Team (1).

ANN IRENE LOWRANCE
Charlotte, North Carolina

Major: Latin.

Silhouette Staff (4); Agonistic Reporter (2, 3), Society Editor (4); Y. W. C. A. Poster Committee (2, 3); Pen and Brush Club (3, 4), Publicity Manager (4); Blackfriars (3, 4); Classical Club (2, 3, 4), Program Committee (4); Chemistry Club (3); Bible Club (3, 4); Fire Lieutenant (1, 4).



ANNA MAE McCOLLUM
Thomasville, Georgia

Major: French.

Aurora Associate Editor (4); Agonistic Reporter (2, 3, 4); Y. W. C. A. Industrial Commission (2, 3); K. U. B. (2); Secretary (3), President (4); B. O. Z. (3, 4); Classical Club (1, 2); French Club (2, 3, 4); Lecture Association (4); May Day Committee, Publicity Manager (2, 3).

MARY LEIGH McALILEY
Chester, South Carolina

Major: English.

Agonistic Circulation Manager (2); Bible Club (2, 3); Biology Club (4).

MARY BELL McCONKEY
St. Louis, Missouri

Major: Latin

Hoast; Class Representative to Executive Committee (1, 2); Class President (3, 4); Silhouette Associate Editor (1, 2); Secretary Classical Club (2); May Queen (4).

THE SILHOUETTE



JANET LAUCK MacDONALD
Keyser, West Virginia

Major: History.

Hoast: Student Government Association: Secretary (3), President (4); College Council (3, 4), Secretary (4); Class Historian (4); Class President (2); Sophomore Commission; Agonistic Reporter (1, 2); Pi Alpha Phi (1, 2, 3, 4); Debating Council (3), Intercollegiate Debater (2, 3, 4), Quennelle Harold Debating Cup (3); International Relations Club (2, 3, 4); Secretary (3), Executive Board (3), Prize (3); League of Women Voters (3, 4); Blackfriars (2, 3, 4); Folio Club (1, 2), President (2); Class Hockey Team (1, 3, 4); Class Basketball (1).

MARY JANE McCOY
Washington Court House, Ohio

Majors: Mathematics, Chemistry.

Agnesi Mathematics Club (1, 2, 3, 4); Chemistry Club (3, 4); Latin Club (1); Glee Club (2, 3, 4); Business Manager (4); Special Chorus (4).

MARY ELIZABETH McENTIRE
Calhoun, Georgia

Major: Chemistry.

Chemistry Club (2, 3, 4); Bible Club (2, 3).



GWENDOLYN HARDIN McKINNON
Hartsville, South Carolina

Major: Psychology.

A. S. Club; Class Secretary and Treasurer (1); Agonistic Athletic Editor (2, 3); Classical Club (1); Bible Club (2, 3); League of Women Voters (3, 4); Treasurer Athletic Association (2, 3); Class Tennis Manager (1); Varsity Hockey Team (1, 3); Class Baseball Team (1, 2, 3, 4); Hiking Manager (1); Class Swimming Team (2); Varsity Basketball (3, 4).

SARAH LAUCLIN McFAYDEN
Suchowfu, Ku, China

Major: Biology.

Chemistry Club (3, 4); Biology Club (2, 4); Bible Club (3); Glee Club (4); Secretary Atlanta Student Volunteer Union (3); Secretary Georgia Student Volunteer Union (4); Student Biology Assistant.

ELLOTT MAY McLELLON
Charleston, West Virginia

Major: Mathematics.

Y. W. C. A. Poster Committee; Chemistry Club (3, 4); Bible Club (2, 4); Agnesi Mathematics Club (2, 3, 4); Vice-President (4); May Day (2, 3, 4); Class Track (3).

The SILHOUETTE



ERMINE DUPONT MALONE
Quincy, Florida

Major: English.

Aurora Circulation Manager (4);
League of Women Voters (4); Bible Club
(3, 4); Classical Club (1); Proctor
Board (3, 4); May Day (1, 3, 4).

BAYLISS ELIZABETH McSHANE
Greenwood, Mississippi

Major: History.

Hoasc; Sophomore Commission; Co-
Author of Stunt (2); Class Prophet (4);
Silhouette: Advertising Manager (2),
Business Manager (3), Editor-in-Chief
(4); Pi Alpha Phi (2, 3); Cotillion Club
(1, 2, 3, 4); Class Swimming Team (2).

RUTH EVANS MASENGILL
Bristol, Tennessee

Major: English.

Classical Club (3); Bible Club (4);
Salutation and the Cat (4).

The SILHOUETTE



VIRGINIA MILLER
Huntington, West Virginia

Major: French.

French Club (2, 3, 4); Bible Club (4);
Classical Club (3); Glee Club (1); Vice-
President (2); Business Manager (3);
President (4); Special Chorus (1, 2, 3,
4); Choral Society (2, 3, 4); Proctor
Board (2); Fire Lieutenant (4); May
Day (2).

ALMA METCALFE
Decatur, Georgia

Major: Bible.

Bible Club (3, 4), President (4); Clas-
sical Club (4); Pen and Brush Club
(3, 4).

LILLA KENNERLY MILLS
Camden, South Carolina

Major: Mathematics.

Senior Secretarial Committee; Biology
Club (3); Bible Club (3, 4); Agnesi
Mathematics Club (3, 4).



VIRGINIA NORRIS
Greenville, South Carolina

Major: English.

Member of Lower House (4); Student Recorder of Points (4); Sophomore Stunt Committee (2); Agonistic Reporter (2, 3); Y. W. C. A., Evening Watch Committee; Proctor Board (2, 3); Folio (1, 2); B. O. Z. (2, 3, 4), Secretary (4); K. U. B. (3, 4); Choral Society; Fire Lieutenant (1, 3); Class Swimming Team (3, 4).

JULIA OSBORNE NAPIER
Decatur, Georgia

Major: Latin.

Cotillion Club (3, 4); French Club (3, 4); Glee Club (4); Classical Club (2, 3, 4); League of Women Voters (4).

MARTHA LOU OVERTON
Decatur, Georgia

Major: Latin.

Classical Club (2, 3, 4); Bible Club (3, 4).



MARY LOUISE PERKINSON
Woodstock, Georgia

Major: Latin.

A. S. Club; Hoasc; Lower House (4);
Agonistic Reporter (1, 2, 3); Industrial
Commission (2, 3, 4); Y. W. C. A. Treas-
urer (2, 3); K. U. B. (2, 3); League of
Women Voters (3, 4); Classical Club (1,
2, 3, 4), Vice-President (3); Program
Committee (4); President Athletic Ass-
ociation (4); Class Hockey Team (1, 3, 4);
Class Tennis Manager (1); Basketball
Squad (1, 2, 4); Camp Manager (3).

EVANGELINE THOMAS PAPAGEORGE
Atlanta, Georgia

Major: Chemistry.

Phi Beta Kappa; French Club (2, 3, 4);
Chemistry Club (2, 3, 4); Classical Club
(3, 4); Bible Club (4).

MILDRED BRUCE PHIPPEN
Decatur, Georgia

Major: History.

Bible Club (3, 4); Choral Society (4).

The SILHOUETTE



MARY MARTIN RAMAGE

Decatur, Georgia

Major: English.

Bible Club (3); Biology Club (4); Agnesi Mathematics Club (2, 3); Salvation and the Cat (4); Class Swimming Team (3).

LILA PORCHER

Boston, Massachusetts

Major: Psychology.

Silhouette, Assistant Art Editor (2), Cartoon Editor (3, 4); Aurora Art Editor (4); Pen and Brush Club (4); Blackfriars (4); Cotillion Club (4); May Day Committee, Assistant Costume Manager (2), Property Manager (3), Costume Manager (4).

MARGARET RICE

Florence, Alabama

Majors: Mathematics, Physics.

A. S. Club; Hoase; Class Secretary and Treasurer (3); President (3), Sophomore Commission, Senior Council; Second Vice-President of Student Government Association (4); Y. W. C. A.: Chairman Social Department (3), Social Committee (2); Agnesi Mathematics Club (2, 3, 4); League of Women Voters, Second Vice-President (3); Class Basketball (3, 4), Captain (4); Class Baseball (3); Class Tennis (1, 2, 3, 4).



MARY RICHEY RIVIERE
Fort Benning, Georgia

Major: French.

Hoast: Author of Class Stunt (1); Agonistic Reporter (2, 3); Aurora Assistant Circulation Manager (3); Y. W. C. A.: Collector (1), Music Committee (2, 3, 4), Poster Committee (2, 3); Pi Alpha Phi (1, 2, 3, 4); Twelve (2, 3), Intercollegiate Debater (4), Treasurer (4); Blackfriars (2, 3, 4), Assistant Property Manager (3); Poetry Club (1, 2, 3, 4); French Club (1, 2, 3, 4); League of Women Voters (3); International Relations Club (3); Glee Club (1, 2); Special Chorus (1, 2); Choral Club (1, 2, 3, 4); Fire Lieutenant (1, 2, 3), Captain (4); Orchestra Director (3, 4); Orchestra (1, 2, 3, 4); May Day (1); Athletic Board (3, 4); Class Hockey Team (1, 2, 3, 4); Swimming: Class Manager (2), Class Team (2, 3); Class Baseball Team (1, 2, 3, 4); Class Track Team (1); Class Basketball Squad (1, 2).

MARTHA DOANE RILEY
Atlanta, Georgia

Major: Spanish.

Bible Club (2, 3); Class Basketball (4); Class Baseball (3), Hockey: Class Team (4), Varsity (3).

ELIZABETH ROARK
Franklin, Kentucky

Major: Mathematics.

Agonistic Assistant Circulation Manager (4); Agnesi Mathematics Club (2, 3, 4), President (4); Glee Club Secretary and Treasurer (3); Classical Club (2); Hikers' Club (1, 2); Evening Watch Committee (3).

THE SILHOUETTE



ROSALTA HAGAN SANDERS

Decatur, Georgia

Majors: Biology, Chemistry.

Biology Club (2, 3); Chemistry Club
(3, 4); Art Club (3, 4); B. O. Z. (3, 4);
International Relations Club (3); French
Club (2).

ANN ELIZABETH RUFF

St. Petersburg, Florida

Major: Mathematics.

Agnesi Mathematics Club (2, 3, 4);
Bible Club (2, 4).

MARY FALLANSBEE SAYWARD

Decatur, Georgia

Major: Latin.

Blackfriars (1, 2, 3, 4), President (4);
Classical Club (1); Hockey, Varsity
(3, 4).

SILHOUETTE



LOUISE SHERFESEE

Greenville, South Carolina

Major: Psychology.

Class Vice-President (3); Stunt (2);
Silhouette Joke Editor (3); Agonistic
Joke Editor (2, 3, 4); Cotillion Club (2,
3, 4); Glee Club (1, 3); Bible Club (2,
3); League of Women Voters (4); Pro-
ctor Board (1, 2); Fire Lieutenant (4);
Chapel Door Committee (2); May Day
(1, 2, 3, 4).

MARY WALLER SHEPHERD

Sewanee, Tennessee

Majors: English, French.

Agonistic Reporter (4); Cercle Fran-
cais (4); League of Women Voters (4);
Classical Club (1, 2, 3, 4); Pi Alpha Phi
(3, 4); Intercollegiate Debater (4), Sec-
retary (4), Twelve (3, 4); May Day (2).

MARY ELIZABETH SHEWMAKER

Memphis, Tennessee

Major: English.

Class Representative to Executive Com-
mittee (4); Secretary and Treasurer of
Lecture Association (4); Y. W. C. A.;
Chairman of Vesper Service Committee
(4); Evening Watch Committee (2, 4);
Pi Alpha Phi (2, 3, 4); Chemistry Club
(3); French Club (3); Poetry Club (3,
4); Fire Lieutenant.

THE SILHOUETTE



FLORENCE SMITH
Atlanta, Georgia

Major: Latin.
Classical Club (1, 2, 3, 4); Bible Club
(3, 4).

VIRGINIA BALDWIN SKEEN
Decatur, Georgia

Major: English.
Cotillion Club (2, 3, 4); Bible Club
(3); Y. W. C. A. Social Committee (3);
Swimming Squad (4); May Day (1).

LOUISE LEYBURN SYDNOR
Charles Town, West Virginia

Major: History.
Class Vice-President (1); Cheer Leader
(3); Stunt (1, 2); Silhouette Feature
Editor (2, 3, 4); Y. W. C. A. Chairman
Chapel Door Committee (2); Cotillion
Club (1, 2, 3, 4); Pi Alpha Phi (2, 3);
Blackfriars (3, 4); Glee Club (1); Inter-
national Relations Club (3, 4); Bible
Club (2, 4); Classical Club (2, 3); May
Day (4); Athletic Board (3); Class
Hockey Team (1).

The SILHOUETTE



EDNA MARSHALL VOLBERG
Atlanta, Georgia

Major: Chemistry.
Chemistry Club (2, 3, 4), Vice-President (3), President (4); Associate Member of Playwriters' Club (4).

ANN McKINNEY TODD
Atlanta, Georgia

Major: Chemistry.
Bible Club (2); Classical Club (3, 4); Chemistry Club (4); Biology Club (4).

JOSEPHINE TRENHOLM WALKER
Summerville, South Carolina

Major: English.
Class Vice-President (4); Class Stunt (1, 2); Senior Council; Representative to Lecture Association (4); Y. W. C. A.: Evening Watch Committee (3), Chapel Door Committee (2); Blackfriars (1, 2, 3, 4); Stage Manager (4), Advertising Chairman (3); Cotillion Club (1, 2, 3, 4); Folio (1, 2); League of Women Voters (3); Classical Club (1); Proctor Board (1, 2, 3); Fire Lieutenant (1, 2); May Day (1, 2, 3, 4); Hockey: Class Team (1, 3, 4), Captain (1), Manager (3); Basketball Squad (1, 2, 3, 4); Class Baseball Team (1); Track Squad (3, 4), Class Team (4); Hiking (1, 2); Water Polo (4).

The SILHOUETTE



GEORGIA DOREMUS WATSON

Thomson, Georgia

Major: History.

President of Hoast; Class Secretary and Treasurer (2); Chairman Stunt Committee (2); Sophomore Commission; Co-author of Stunt (2); Third Vice-President of Student Government Association (4); Aurora Assistant Business Manager (2); Y. W. C. A., Social Service Chairman (3); Lecture Association (3, 4); Pi Alpha Phi (2, 3, 4), Eight (4); Poetry Club (3, 4); International Relations Club (2, 3, 4), President (3); Secretary of League of Women Voters (3); Cotillion Club (2, 3, 4); Classical Club (1).

ELIZABETH BLAIR WALLACE

Knoxville, Tennessee

Major: Biology.

Biology Club (2, 3); Bible Club (2, 3, 4); Undergraduate Assistant in Biology.

LILLIAN WHITE

Buchanan, Georgia

Major: Psychology.

Class Vice-President (3); Lower House (2, 3, 4); Silhouette Advertising Manager (3); Agonistic Business Manager (4); Y. W. C. A., Social Committee (3), Chapel Committee (2); Blackfriars (2, 3, 4); Classical Club (1, 2); Bible Club (2, 3); Athletic Board (2); Class Basketball Team (1).



SARAH WHITE
Atlanta, Georgia

Major: French.
Class Vice-President (2); Day Student Representative to Lecture Association (4); Blackfriars (2, 3, 4), Secretary (4); Cotillion Club (3, 4); French Club (2, 3, 4); Red Headed Club (4); May Day (3).



NANCY ELIZABETH WILLIAMS
Selma, Alabama

Major: Mathematics.
Agnesi Mathematics Club (2, 3, 4); Bible Club (3, 4); Hiking Club (1); Class Swimming Team (3, 4).

Class History

1928

DEPARTMENT OF HISTORY
AGNES SCOTT COLLEGE
DECATUR, GEORGIA

Professor: Agnes Scott College.

Associate Professors: Atlanta and Decatur.

Instructors: The Classes of '25, '26, '27, '29, '30, '31.

The Department of History offers the following courses:

HISTORY 101-102: ANCIENT HISTORY.

This course covers the Age of Innocence. It introduces the student to the various trials and tribulations of our primitive civilization, as Latin Prose, Freshman gym, and the Sophomores. The course extends over a period of one year, and especial attention is paid to the splendid work of the entire community in raising the building fund for the new gym; to the social customs of the people, the significance of wearing pig-tails and reversed make-up at certain times of the year; their worship of the Black Cat, and the judicial system of the people as illustrated in Rat Court. All the great events of the year, the Freshman-Sophomore Stunt, the Intercollegiate Debate, May Day and Senior Opera, and the culminating event of Spring initiation, are treated in great detail.

HISTORY 203-204: MEDIEVAL HISTORY.

A comprehensive study of the Dark Ages, the extent and influence of bigotry, and the methods of the Inquisition. This is a note course, requiring one hundred pages of outside reading a week. It gives special consideration to the tremendous—in fact the truly phenomenal—growth in importance of the individual, her influence on the students of History 101; and her relations with the Seniors. In this age the individual had great privileges, such as the right to go to town an unlimited number of times a week. It is, from the social point of view, one of the most delightful courses which the department offers.

Prerequisite: History 101.

HISTORY 307-308: MODERN HISTORY:

A study of the financial systems of the age, together with its economic and political development. This course is open only to upper classmen. A great deal of time is devoted to discussing the political and intellectual situation of the community. In this age of our history, the individual was expected to show definite signs of independence and initiative, and was allowed an increasingly important place in political affairs. The period studied is truly called the Great Age of Business, but even multimillionaires must have their relaxations, so it was the custom of this age to bring the year to an end with a great festival, known as the Junior-Senior Banquet.

Prerequisite: Survival of the two preceding years.

HISTORY 421-422: CURRENT EVENTS:

Owing to the popularity of this course, the department has found it necessary to limit the membership of the class. Only those who have taken the three preceding courses are eligible. Candidates must also possess a great sense of personal dignity, an awesome manner, and a cap and gown. (The department suggests that the possession of the latter articles will help greatly in the maintenance of the aforementioned personal attributes.) The course itself covers a period of political and intellectual supremacy. Special attention is paid to certain ceremonies which are peculiar to this age: the strange customs of voluntarily coming in late to meals and sitting up late at night; the inexplicable rejuvenation of this ancient people on a certain day in November known as Little Girl Day; the unique and cherished ceremony of Investiture; an actual combat—tho mental—with some charming Englishmen over “the far-flung battle line”; Founders’ Day, May Day, and Senior Opera. The last ceremonies, known as Commencement are studied in great detail, because they constitute the final records of the Class of 1928. After this time, a great calamity seems to have scattered this people and nothing more is known of them.

Last Will and Testament

STATE OF GEORGIA
DEKALB COUNTY



We, the graduating class of Agnes Scott College, Decatur, Georgia, in the year of our emancipation, nineteen hundred and twenty-eight, feeling ourselves mentally capable of anything at the present time, do hereby declare this to be our Last Will and Testament, and do declare null and void any and all other wills or statements made by us previous to this document.

Item I. We, the class of '28 do will and bequeath to our poor and needy sister class our Midas characteristics by means of which we have shown that it is possible to be "multi-multi-millionaires" though Hotteintots.

Item II. I, Sallie Abernethy, do hereby bequeath my musical ability to Dorothy Dudley, with the request that she use it to best advantage in rendering "Tonight You Belong to Me."

Item III. I, Harriet Alexander, do will my roommate to Elizabeth Merritt, along with said roommate's life-size photo of her best beloved.

Item IV. I, Mary Elizabeth Allgood, do will my Grecian profile to Sally Cothran. My fondness for green I leave to Sarah Townsend, wishing her a Merry Christmas.

Item V. I, Leila Warren Anderson, do bestow my straight black hair and my earnestness of purpose upon Jean Alexander. My better known name of "Jack" I bequeath to Martha Stackhouse.

Item VI. I, Miriam Louise Anderson, do will my serious outlook on life to Helen Anderson.

Item VII. I, Eunice Ball, do leave my daily morning walk to the boarding students. It is a help in filling up blank spaces on exercise cards.

Item VIII. I, Jimmie Myrtle Bledsoe, do bequeath my gift for poetry to anyone who feels exquisitely. My poetry itself I leave to all to whom it may give pleasure.

Item IX. I, Frances Campbell Brown, do leave to my younger sister my Phi Beta Kappa mind, along with my fondness for Physics. May she continue to hold up the honor of the family.

Item X. I, Martha Brown, do bequeath my U. S. A. to any forlorn Freshman who may have use for it.

Item XI. I, Mary Estelle Bryan, do will my curly hair to Lucile Bridgman. I do bequeath my medical ambitions to Eleanor Lee Norris because of the interest and pleasure she displayed in cutting up earthworms.

Item XII. I, Virginia Carrier, do bequeath my ability to wield a hockey stick to Clarine Dorsey, and my slightness of figure to Mary Ruth Rountree.

Item XIII. I, Elizabeth Cole, do will my charming smile to Harriet Smith.

Item XIV. I, Dorothy Virginia Coleman, do bequeath my delight in waltzing to Miriam Kaufman.

Item XV. I, Patricia Harriet Collins, do bestow on Pearl Hastings my sweetness of disposition and my cheerful outlook on life. My practical turn of mind I will to Alice Jernigan.

Item XVI. I, Lucy Mai Cook, do bequeath my efficiency to the next photographic editor of the SILHOUETTE.

Item XVII. I, Emily Dasher Cope, do will my poise and my aristocratic southern voice to Alice MacDonald.

Item XVIII. I, Frances Craighead, do bequeath my "crowning glory" to Katherine Pasco.

Item XIX. I, Mary Cabanis Crenshaw, do leave my ability to get by with baby talk to Charlotte Hunter.

Item XX. I, Sarah Katherine Currie, do bequeath my love of German to Miriam Broach.

Item XXI. I, Betsey Davidson, do will the pantry accommodations of my study, No. 9 Rebekah, to future inmates of No. 10.

Item XXII. I, Elsie Bischoff Davis, do will my tall figure to the class of '31, with the hope that it may help to raise their average height.

Item XXIII. I, Huda Dement, do will my cheerful disposition to the campus at large, to be used especially on Blue Mondays.

Item XXIV. I, Mary Ray Dobyms, do bequeath my musical responsibilities to Betty Reid and Margaret Armstrong.

Item XXV. I, Mary Jewett Doyal, do leave my love of jewelry to Margaret Ogden, wishing to change her attitude toward the lesser things of life.

Item XXVI. I, Carolyn Hall Essig, do bequeath my daintiness to Frances Welsh. My debating ability I bestow upon Margaret Andrae, hoping that she may be as successful in her arguments with the opposite sex as I have been.

Item XXVII. I, Helen Claire Fox, do bequeath my genial joviality to Jeanie, the maid and the waitress.

Item XXVIII. I, Betty Fuller, do leave my weakness for Psi Omegas to Mary Transou.

Item XXIX. I, Mary Eloise Gaines, do bequeath my love of blue to Miriam Strickland, and my success in acquiring long hair to Ditty Winter.

Item XXX. I, Irene Grace Garretson, do bequeath my gentle femininity to Frances Roe.

Item XXXI. I, Margaret Gerig, do will my liking for modern drama to Elizabeth Tyson.

Item XXXII. I, Hattie Gershcov, do bequeath my broadcasting privileges on Friday night dates to Clemmie Downing. The dates themselves—or rather himself—I reserve the right to retain.

The SILHOUETTE

Item XXXIII. I, Louise Girardeau, do will my failing for dark-haired young poets to Virginia Earle.

Item XXXIV. I, Sara Priscilla Glenn, do bequeath my crush on Dr. Hayes to Mary Ellis, hoping it will serve her as well as it did me in winning his favor. My indispensibility in the Gym on Wednesday and Saturday nights I leave to Carolyn Payne.

Item XXXV. I, Eugenia Gobere, do bestow my skill at the bat along with my title of "Babe Ruth" upon "Ditto" Worth.

Item XXXVI. I, Myra Olive Graves, do bequeath my French major and my consequent complaints to Rosa White.

Item XXXVII. I, Elizabeth Hemphill Grier, do will my interest in Silhouettes to the Gym Department, Posture Committee.

Item XXXVIII. I, Lucy Henrietta Grier, do leave my absentmindedness to Dorothy Smith. It may help her to get her Ph.D.

Item XXXIX. I, Muriel Griffin, do will my excellence in gym to Genevieve Knight.

Item XL. I, Frances Lee Harris, do bequeath my pull with the Atlanta Summer Opera Co. to Kitty Hunter. I retain, however, my interest in the leading man.

Item XLI. I, Annie Dorothy Harper, do will my financial cares and my efficiency in their execution to Mr. Tart.

Item XLII. I, Nell Hillhouse, do bequeath the iron band with which I ruled Rebekah to Miss McKinney for use in her Modern Drama class.

Item XLIII. I, Mary Mackey Hough, do will my figure to the Gym Department to be used in their photographic gallery as Exhibit A.

Item XLIV. I, Josephine Phiifer Houston, do will my susceptibility to blue eyes and dark hair as displayed by certain members of the masculine sex to Betsey Bennett, since she seems to have a similar tendency already.

Item XLV. I, Elizabeth Hardy Hudson, do bequeath my slender stature to "Baby" Shaw.

Item XLVI. I, Alice Louise Hunter, do will to future Math majors my boot-lick with Mr. Robinson.

Item XLVII. I, Mildred L. Jennings, do leave my Ford to Miss MacDougall in the event that hers ever becomes in need of repairs.

Item XLVIII. I, Anais Cay Jones, do bequeath my courage in speaking out in class to Walterette Arwood.

Item XLIX. We, Hilda and Kathryn Kalmon, do bestow upon our sisters, the Class of '30, our exceptional grace in diving, along with the honors which it has won for us. I, Hilda, do bequeath my monopoly in long distance phone calls to Jean Kennedy. I, Kathryn, do will my fur coat to Jean Coffman, in order that she and her room mate may be able to be thus attired at the same time.

Item L. I, Vera Waller Kamper, do will my generous hospitality to Gussie Dunbar, believing her capable of carrying the double burden.

SILHOUETTE

Item LI. I, Margaret Louise Keith, do bequeath my stylish appearance to Edith McGranahan, not that she needs it, but because I feel that she will be a worthy successor. To the new Y. W. Cabinet I leave my Influence on the Campus.

Item LII. I, Mary Hortense King, do will my vacations in Mountain City to Mildred Greenleaf—although the town does not offer canal advantages.

Item LIII. I, Emily Coleman Kingsbery, do will my ready flow of words to Emilie Harvey. My Zip dances I bequeath to Julia Mulliss.

Item LIV. I, Anna Angier Knight, do bequeath my ability to answer questions in History without previous preparation to rising generations of History majors.

Item LV. I, Lillian King LeConte, do bestow upon "Dit" Quarles my ability to conduct the Child Psych class, as well as my bootlick with Miss Dexter. My knack of collecting frat pins I will to Leonora Briggs.

Item LVI. I, Virginia May Love, do bequeath my gentleness of disposition to Katherine Lott. My orthophonic portable and Gene Austin records I leave to Ditty Winter.

Item LVII. I, Ann Irene Lowrance, do will my fondness for ships to Martha Riley Selman, and my capability as an AGONISTIC reporter to Gertrude Willoughby.

Item LVIII. I, Mary Leigh McAliley, do bequeath my generous good-heartedness to Olive Spencer.

Item LIX. I, Anna Mae McCollum, do bequeath my ability to be a "little ray of sunshine" to Marion Green. The custody of the "mowing machine". I leave to the succeeding president of K. U. B.

Item LX. I, Mary Bell McConkey, do will my schemes for making money to the Agnes Scott Book Store.

Item LXI. I, Mary Jane McCoy, do will my mid-western accent to Mary Cope.

Item LXII. I, Janet Lauck MacDonald, do will my exceptionally excellent brain to the incoming Freshman class, with the hope that it will lead them safely through History I and such terrors. My strong Scotch sentiment I bequeath to Eula Mae McManus, hoping that she will live up to all her name implies.

Item LXIII. I, Mary Elizabeth McEntire, do bestow my studious nature upon Dade Warfield.

Item LXIV. I, Sarah Lauchlin McFayden, do will my great love of English History to Geraldine LeMay.

Item LXV. I, Gwendolyn Hardin McKinnon, do will my athletic prowess to Mary Prim.

Item LXVI. I, Elliot May McLellon, do bequeath my beautiful handwriting to Mary Alice Juhan.

Item LXVII. I, Bayliss Elizabeth McShane, do bequeath my original turn of mind and native wit to all those who are inclined to take their studies too seriously.

Item LXVIII. I, Ermine Dupont Malone, do will my fastidiousness to "Bib" McKee.

Item LXIX. I, Ruth Evans Masengill, do will my beautiful brown eyes to the campus movie fans. They will now be able to see first-hand close-ups only by looking at said eyes.

Item LXX. I, Alma Metcalf, do bequeath my constancy of purpose to Pernette Adams.

Item LXXI. I, Virginia Miller, do bestow upon Janet MacDonald and Anne McCollum, as a parting gift from one classmate to another, my song-bird qualities. I can think of no others to whom such a gift would be more useful.

Item LXXII. I, Lilla Kennerly Mills, do bequeath my philosophical attitude toward the male of the species to Esther Nisbet.

Item LXXIII. I, Julia Osborne Napier, do leave my connection with the French Alliance to the French Club.

Item LXXIV. I, Virginia Elizabeth Norris, do will my cleverness to Polly Vaughn—out of the combination she ought to be the sensation of the campus. My slender figure I leave to Myra Jervey.

Item LXXV. I, Martha Lou Overton, do bequeath my choice in perfumes to Baby Sarah Johnston.

Item LXXVI. I, Evangeline Thomas Papageorge, do will my pleasing voice to the Spoken English Department, to be used in otherwise hopeless cases.

Item LXXVII. I, Mary Louise Perkinson, do bequeath my Latin major to Belle Ward Stowe, hoping that in going through with it she may retain her youthful appearance as well as I did.

Item LXXVIII. I, Mildred Bruce Phippen, do will my systematic method of apportioning my time to Helen Sisson.

Item LXXIX. I, Lila Porcher, do bestow my position as Best Dancer upon Anne Erlich. My perpetual pep and delicious sense of humor I bequeath to Lucretia Morgan.

Item LXXX. I, Mary Martin Ramage, do bequeath my love of the out-of-doors to Kathryn Craighead.

Item LXXXI. I, Margaret Rice, do bequeath my very likeable personality to the next house president of Main, hoping she will find as easy management and as many friends through it as I have.

Item LXXXII. I, Martha Doane Riley, do leave my hockey struggles to Peggy Lou Armstrong, with the hope that she will come through them as cheerfully as I did.

Item LXXXIII. I, Mary Richey Riviere, do will my ability to write last minute speeches to Pi Alpha Phi. My artistic temperament I leave to Mildred McCalip.

Item LXXXIV. I, Elizabeth Roark, do bequeath my sense of humor to Laura Brown.

Item LXXXV. I, Ann Elizabeth Ruff, do will my Florida oranges to Margaret McCoy.

Item LXXXVI. I, Rosaltha Hagan Sanders, do bequeath to Sarah Southerland my skill in successfully combining scientific and literary tendencies.

SILHOUETTE

Item LXXXVII. I, Mary Fallansbee Sayward, do bequeath my dramatic powers to Esther Rice. My ability to meet any situation calmly I leave to Polly Irvine.

Item LXXXVIII. I, Mary Waller Shepherd, do will my interesting travels to whoever longs for a wider horizon. My sound philosophy I leave to Violet Weeks.

Item LXXXIX. I, Louise Sherfese, do will my week-ends at Riverside to Elizabeth Dawson; and my emotional temperament to Gladney Curaton.

Item XC. I, Mary Elizabeth Shewmaker, do bequeath my ability to carry a great deal of work with apparent ease to the "underworked" Freshmen.

Item XCI. I, Virginia Skeen, do bestow upon Dot Cheek my understanding of the Emory heart.

Item XCII. I, Florence Smith, do bequeath my spontaneous outbursts in class to Mary Ann Phelps.

Item XCIII. I, Louise Leyburn Sydnor, do will my tinted picture to Mr. White. My responsibility of furnishing the class in Early American History with outlines I leave to someone with both spare time and a typewriter.

Item XCIV. I, Ann McKinney Todd, do will my speed demon qualities to Betty Gash.

Item XCV. I, Edna Marshall Volberg, do leave my qualities of a lovely old-fashioned girl to Dade Warfield.

Item XCVI. I, Elizabeth Blair Wallace, do will my pigmy size to Martha Bradford.

Item XCVII. I, Josephine Trenholm Walker, do bequeath my personal charm to Sara Carter, whom I consider a worthy custodian. My skill in representing Miss Hopkins I leave to all succeeding Stunt committees.

Item XCVIII. I, Georgia Doremus Watson, do bequeath my famous ancestry as an excuse to go home for interesting data to all homesick Freshmen.

Item XCIX. I, Lillian White, do bequeath my "way with the men" to my successor as Business Manager of the AGONISTIC, hoping it will "ad" as much to her Aggie finances as it did for me—to say nothing of good times in less "agonizing" fields.

Item C. I, Sarah White, do bestow upon Elizabeth Hatchett my rosy cheeks. My vivacious personality I will to Louise Fowler.

Item CI. I, Nancy Elizabeth Williams, do bequeath my mathematical skill to Pauline Willoughby, hoping it will raise her mind to more scholarly things than The Little Colonel books.

Signed and sealed by this, the graduating Class of Agnes Scott, this twenty-ninth day of May, nineteen hundred and twenty-eight.

—EMIL KINGSBERY, *Class Testator*.

WITNESSES:

CAROLYN HALL ESSIG
PATRICIA HARRIET COLLINS

Class Prophecy

May 29, 1938.



EAR Polly Stone:

No need to say how delighted I was to get your letter and hear all the news about the Hottentots of Agnes Scott. Your request "tell me of the girls of the Class of 1928" makes me feel like the News Gazette; but I "take my pen in hand" and write:

Sallie Abernethy is in Florida trying to stir up another boom. She says that conditions are terrible—not even the blondes have the advantage over the brunettes.

Harriett Alexander went abroad the summer after graduation. She not only got lots of travel but a husband.

Elizabeth Allgood is running an air line from New York to California "Easy rides for your money—no flat tires."

Leila Anderson has just published her book of poems—touching little ditties called "Temperamental Lyrics."

Miriam Anderson has taken Paul Whiteman's place as director of his jazz band.

Eunice Ball still maintains her interest in the Greek department of the Seminary. She writes "Oh, how I love the classics."

Myrtle Bledsoe has just returned from studying abroad. While there she went to Athens to tell Persephone "hello" for Richard Halliburton.

Frances Brown is giving illustrated lectures on "What Happens When an Irresistible Force Meets an Immovable Object"—her talks are most explosive.

Martha Brown and Estelle Bryan, after intensive research, have written a paper on "The Ethics of Catching Mice"; the question involved being whether to use cheese or not to use cheese.

You remember what an athlete Virginia Carrier was. She went abroad with Miss Gaylord and while over there got a job conducting tourists over the Alps.

Elizabeth Cole is married and living in Atlanta.

Dorothy Coleman has devoted her life to discovering why is the Dead Sea.

I am glad to hear that Pat Collins is running a bus service for all debaters from eastern colleges. It's so nice for them to go back and write in their papers "All Agnes Scott girls have their own cars at school".

Poor Lucy Mai Cook has never been the same since her senior year, when she was Photographic Editor of the annual. She is now in a padded cell and you can hear her rave: "A dollar seventy-five, please—extra cuts, twenty-five cents."

Emily Cope is teaching modern dancing to the natives in Africa.

Frances Craighead is running a Lost and Found Store—her early experience with Beta pins has made her quite proficient in this line.

I hear that Mary Crenshaw has given up a career to stay at school to lead the girls at the Wednesday night dances.

Sarah Currie is on Keith's circuit as the song and dance girl.

And Betsy Davidson is also in Vaudeville—they say her rendition of that old favorite, "That Read-Headed Gal," is especially effective.

Elsie Davis and Huda Dement have discovered the fourth dimension.

Mary Ray Dobyns is driving a taxi in little old New York—her early work-outs on “papa’s car” made her the driver she is today.

Mary Jewett Doyal is running a “School for Athletic Girls”.

Carolyn Essig is in Hollywood writing scenarios.

Helen Fox and Betty Fuller are in Cuba trying to Americanize the natives.

Eloise Gaines’ deep interest in the medical profession led her to the study of nursing.

Irene Garretson is selling Palm Olive Soap and advertising that school girl complexion.

Margaret Gerig and Hattie Gerschow are going in for extensive ocean travel—they are bell hops.

Louise Girardeau has continued her interest in poets and realizes the Importance of Being Ernest.

Sara Glenn has a partnership in the air “male”.

Eugenia Gober has proven that “the female of the species is more deadly than the male” by beating Babe Ruth at his own game.

Olive Graves after studying in France a year is now working in the French Shoppe.

Elizabeth and Lucy Grier are publishing a “Memory Course for Absent-Minded Professors.”

Muriel Griffin is interested in resuscitation—she’s teaching Latin.

Frances Hargis’s “Hero Worship” is still running on Broadway.

So Dorothy Harper is at school coaching all Student Treasurers in the art of making students pay their budget.

Nell Hillhouse is on the Chautauqua stage lecturing on “How to be Feminine.”

Mary Mackey Hough and Josephine Houston are editing “Charlotte Life”—the paper that’s rare, racy and nose-y.

Elizabeth Hudson has just returned from the Olympic games with all the trophies.

Alice Hunter is a painter—she paints furniture. Her advertisement says: “When the baby spills hot water on the table don’t cry—it’s Valspared”.

Mildred Jennings wrote me that she was running a faculty transportation bus but that all the cars on the campus had put a crimp in the business. She said it was “grand while it lasted”.

Anais Jones has become a financial wizard on Wall Street. At the present she has a corner on the Bobby Pin market.

Hilda and Katherine Kalmon are both married and live next door to each other—yes, their husbands are congenial.

Vera Kamper is interested in the civic life of Atlanta and matrimony.

So Margaret Keith is still at Agnes Scott supplying the role of the big, bold brute for Blackfriars?

Hortense King’s school girl romance culminated in matrimony.

Emily Kingsbery and Anna Knight have become famous as jugglers of words and bull—they are radio announcers.

The SILHOUETTE

Lillian LeConte has shown what an important part an engraver can play in the life of a Business Manager.

Virginia May Love is making stump speeches on "The Freedom of Speech in Timbuctoo."

Irene Lowrance is news reel photographer for Pathe News.

Mary McAliley as Queen of the Hot Cake Makers of Childs has far surpassed in fame Aunt Jemima and her pan cakes.

I suppose you have read Anne McCollum's and Mary Belle McConkey's book "Why Gentlemen Prefer Blondes"?

Mary Jane McCoy is in Grand Opera.

Janet MacDonald is in jail for killing a man because he spelled her name Mc instead of Mac. I hear she is quite content because she can give vent to her feelings in singing to the prisoners. You may recall what a voice Janet always has had!

Elizabeth McEntire and Sarah McFayden edit a journal the "Two in One Dose," on Biology and Chemistry.

Gwendolyn McKinnon is a psycho-analysist of note.

Jack McLellon is broadcasting bed-time stories for the tiny tots over WSB.

Ermine Malone has devoted her life to keeping the street cleaners in clean, white jackets and caps. Such work satisfies her fastidiousness.

Ruth Evans Massengill is time-keeper on the Bristol line.

Alma Metcalf with her pick and shovel has excavated in Egypt and put all former excavators to shame.

Virginia Miller and Lilla Mills are making "Miller and Mills" records for Victor.

Julia Napier is running a matrimonial agency—"Courtship-Marriage Arrangements made. Information based on personal experience."

Virginia Norris is Fire Chief in Decatur I hear.

Martha Overton has transferred her affections from Tech but she is still undecided between Columbia Seminary and Emory.

Evangeline Papageorge is a manufacturer of high explosives.

Mary Perkinson, Miss Health of 1927, has done much to glorify the American girl at Atlantic City Beauty Contests.

Mildred Phippen is running a beauty parlor—permanent waves a specialty.

Lila Porcher is an illustrator for "Life."

Mary Ramage has had a very sad time trying to keep her individuality. She writes that "life is most difficult for 'Me and My Shadow.'"

Margaret Rice, since she has been separated from her helpful friends, has prospered in her love affairs and is now married. Excerpt from a letter: "I am kept very busy with my Wednesday evening rook club and with my job as president of the Hushpuckanie P. T. A. This life of domesticity pleaseth me".

Martha Riley is in South America as an interpreter for foolish travellers.

Mary Riviere has a series of articles on "My Interviews With Famous People," appearing in True Story Magazine.

Elizabeth Roark, after further juggling with mathematics, has written a "Simpler Mathematics for Undeveloped Mathematicians".

Elizabeth Ruff's interest in Davidson led her to the altar.

Rosaltha Sanders has retired. Her success is due to her solution of the problem of how to keep lab students from swiping the stock bottles when teaching genetics.

Mary Sayward is a producer of plays. In interviews Mary always closes with "And I attribute my success to the training of Miss Frances K. Gooch."

After intensive research among the classics Mary Shepherd has published a book of etiquette so when we are in Rome we can do as the Romans do.

Louise Sherfesee has realized her life's ambition.

Mary Shewmaker is a criminal lawyer—guarantees to get you out and send the other fellow to jail. What more could you want for your money?

Virginia Skeen has invented some invisible glasses that one may wear with ease and beauty and still see all the football games.

Florence Smith has a home and ring and everything at Nacoochee—nuff said!

Louise Sydnor after running a Cook's Tour for a few years is married and living in Atlanta.

Ann Todd has made her fortune by patenting her method of being able to live without any effort and less exertion.

Edna Volberg's deep concern over the well-being of humanity has led her to the establishment of a school for the misunderstood.

Josephine Walker is running an Old Sailors home in Charleston.

Elizabeth Wallace is matron of an institution for red-headed boys.

Georgia Watson, nationally known as the girl with the Pebeco smile, is living in Thomson and is leading the younger generation on to higher things through the Girl Scout Movement.

Lillian White and Sarah White are teaching dramatics—"Send us the girl and we return the actress."

Elizabeth Williams took the fortune teller's tip, went north and got married.

And here endeth my letter. Hope this bit of news will help to fill up your Alumnae Quarterly.

Alumnally yours,

—BAYLESS McSHANE, *Class Prophet*.

We Cannot Go

*All that can pass will have an ending now—
Brief, happy years cry out against their ending;
Theirs is the voice in quivering poplar bough,
In old familiar trees, wind-blown, bending.*

*Before beloved visionings we stand
And beg a respite for their beauty, knowing
Our golden days were as a golden sand,
And had their most of joyousness in going.*

*All that can pass shall pass; but if we keep
From out thy days one living, splendid day
Safe in our hearts, when all the senses leap,
Brimming with light and love and work and play,
We shall not mind the years that reap and flee—
O Agnes Scott, we cannot go from thee.*

—MYRTLE BLEDSOE, Class Poet.



JUNIORS

I. MCCLELLAND

The SILHOUETTE

Junior Class



GENEVIEVE KNIGHT

MARTHA RILEY SELMAN



HELEN RIDLEY

COLORS:

Gold and White

OFFICERS:

- GENEVIEVE KNIGHT *President*
- MARTHA RILEY SELMAN . . *Vice-President*
- HELEN RIDLEY . . *Secretary and Treasurer*
- MISS RANDOLPH } . . *Faculty Members*
- MISS WILBURN } . . *Faculty Members*

The SILHOUETTE



PERNETTE ADAMS
"Hungarian Rhapsody"



THERESE BARKSDALE
"I'm Gonna Meet My Sweetie Now"



CATHERINE ALLEN
"C'est Vous"



LILLIE BELLINGRATH
"Neat, Ha Ha, Sweet, Ha Ha"



SARAH FRANCES ANDERSON
"I Want to Be Happy"



LARUE BERRY
"It's All the Same to Me"



MARGARET ANDREAE
"I'm in Love"



MARTHA BRADFORD
"Sweet Lady"



GLADYS AUSTIN
"Lullaby"



VIRGINIA BRANCH
"Thinking"

The SILHOUETTE



LUCILLE BRIDGMAN
"Keep the Home Fires Burning"



LEONORA BRIGGS
"My Task"



MIRIAM BROACH
"Spring Song"



HAZEL BROWN
"Side by Side"



HELON BROWN
"Side by Side"



VIRGINIA CAMERON
*"You're Just a Flower From an
Old Bouquet"*



SARA CARTER
"Blue Skies"



DOROTHY CHEEK
"K. I. Girl"



SALLY COTHRAN
"Crazy Words, Crazy Tune"



SARA DARRINGTON
"School Days"

The SILHOUETTE



SARA DOUGLASS
"My Little Gypsy Sweetheart"



NANCY FITZGERALD
"When Irish Eyes Are Smiling"



MARY ELLIS
"Just a Song at Twilight"



LOUISE FOWLER
"Me and My Shadow"



HORTENSE ELTON
"One O'Clock Baby"



ETHEL FREELAND
"Brighten the Corner Where You Are"



BERDIE FERGUESON
"Home Sweet Home"



LEONORE GARDNER
"Swinging Along"



MARY FICKLIN
"An Old Fashioned Garden"



MARGARET GARRETSON
"Moonlight and Roses"

The SILHOUETTE



BETTY GASH
"In the Gloaming"



JANE GREY

*"When the Red, Red Robbin Comes
Bobbin' Along"*



ELISE GIBSON
"Let the Rest of the World Go By"



MARY PEARL HASTINGS
"To a Wild Rose"



ALICE GLENN
"Ain't She Sweet"



ELIZABETH HATCHETT
"My Old Kentucky Home"



MARION GREEN
"Autumn Leaves"



*INEIL HEARD
"A Cottage Small"



CARA HINMAN
"My Mother Bids Me Bind My Hair"



MILDRED GREENLEAF
"So This Is Venice"

MARIAN HODGES
"La Paloma"

*No Picture

The SILHOUETTE



*BLOND HOLMES

"Tea for Two"

HAZEL HOOD

"Smiling Thru"

SARA JOHNSTON

"Angel Child"

CHARLOTTE HUNTER

"Ole Davidson"

MARY ALICE JUHAN

"Sweet Alice, Ben Bolt"

KATHERINE HUNTER

"I'm Driŕting Back to Dreamland"

GENEVIEVE KNIGHT

"It All Depends on You"

DOROTHY HUTTON

"Alice Blue Gown"

RAY KNIGHT

"Pal O' Mine"

ELAINE JACOBSEN

"My Highland Lzscie"

JEAN LAMONT

"I'm a Tar Heel Born"



*No Picture

The SILHOUETTE



MARY LANIER
"Always"

ELIZABETH MERRITT
"My Regular Gal"



GERALDINE LEMAY
"Good Morning to You"

AILEEN MOORE
"High, High Up in the Hills"



MARY NELSON LOGAN
"Japanese Sandman"

ELINORE MORGAN
"Humoresque"



KATHERINE LOTT
"That Red Headed Gal"

LUCRETIA MORGAN
"Gipsy Trail"



MABEL MARSHALL
"My Sweetheart Waltz"

ANNE ELIZABETH MOSS
"Sweet and Low"



The SILHOUETTE



JULIA MULLIS
"To a Water Lily"

ELEANOR LEE NORRIS
"The Rosary"

*ELIZABETH MURPHY
"Roses of Picardy"

ALICE McDONALD
"Hallelujah"

KATHERINE PASCO
"My Buddy"

EDITH McGRANAHAN
"Hello Cutie"

RACHEL PAXON
"Smile, Smile, Let Me See You Smile"

JULIA McLENDON
"It Isn't Any Trouble Just to Grin, Grin"

MARY PRIM
"Baby Face"

ESTHER NISBET
"Oh, Boy, What a Girl!"

ELIZA RAMEY
"Dreamy Melody"

*No Picture



The SILHOUETTE



ESTHER RICE
"Whooper Up"

MARTHA RILEY SELMAN
"Little Boy Blue"

HELEN RIDLEY
"A Spanish Cavalier"

*JEAN SIMMS
"The Same Silver Moon"

HELEN SISSON
"Tell Me Sweet Rose"

SARAH RIKARD
"Hello Blue Bird"

LOIS SMITH
"There's a Long, Long Trail"

AUGUSTA ROBERTS
"Follow the Gleam"

SARAH SOUTHERLAND
"Song Without Words"

LOUISE ROBERTSON
"The Doll Dance"

OLIVE SPENCER
"You Don't Like It"

*No Picture



The SILHOUETTE



MARY GLADYS STEFFNER
"Beethoven's Minuet in G"

VIOLET WEEKS
"I'm Off to Louisiana"



SUSANNE STONE
"Look for the Silver Lining"

FRANCES WELSH
"At Sundown"



LOUISE THOMAS
"We're in the Army Now"

FRANCES WIMBISH
"Red Lips"



ELIZABETH TYSON
"She's Got It"

HAZEL WOFLE
"Let Me Call You Sweetheart"

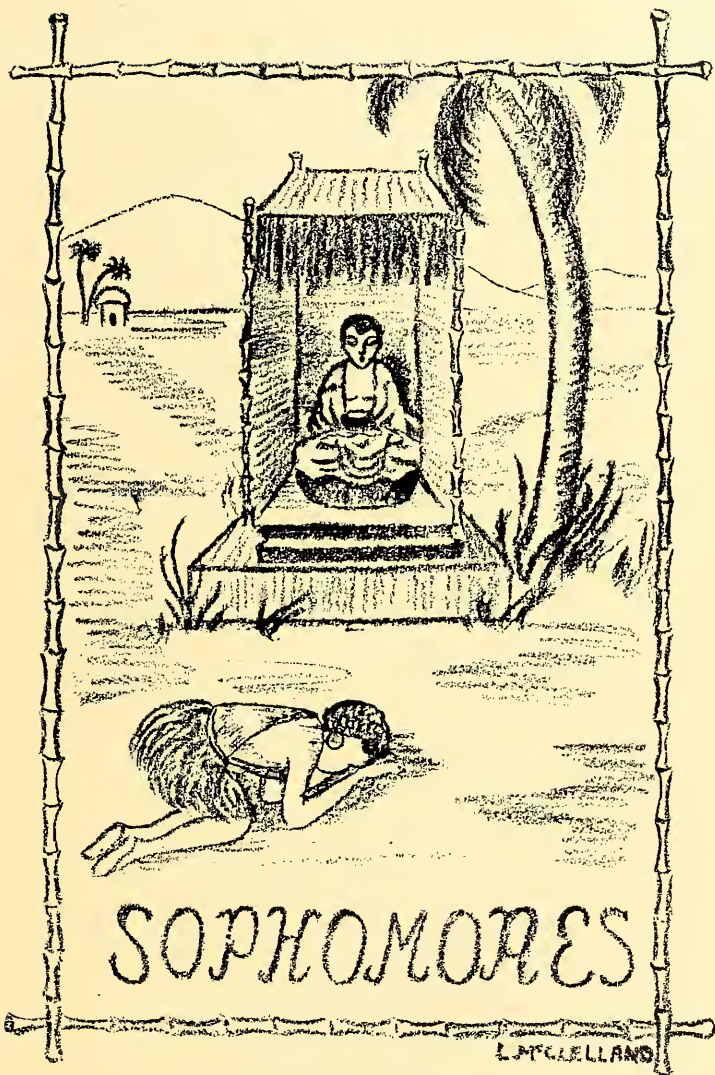


MARY ELIZABETH WARREN
"June Night"

RUTH WORTH
"I'm a Hottentot"







SOPHOMORES

L. McCLELLAN

SILHOUETTE

Sophomore Class



MARTHA STACKHOUSE

BLANCHE MILLER



RAEMOND WILSON

COLORS:

Red and White

OFFICERS:

MARTHA STACKHOUSE *President*
BLANCHE MILLER *Vice-President*
RAEMOND WILSON *Secretary-Treasurer*
MISS FREED } *Faculty Members*
MISS GAYLORD }

SILHOUETTE



J. ALEXANDER	H. ANDERSON	FIRST ROW: S. ARMFIELD *W. ARWOOD	M. ARMSTRONG	L. BAKER
M. E. BAKER	J. BARRY	SECOND ROW: E. BENNETT	E. BERRY	E. BONHAM
M. BOYD	M. R. BRADFORD	THIRD ROW: E. BRANCH	L. BREWER	F. BROWN
M. BROWN	E. CASTLES	FOURTH ROW: M. CATRON	E. CHAPMAN	J. COFFMAN

*No Picture

SILHOUETTE



L. COMBS	M. COPE	FIRST ROW:	K. CRAIGHEAD	K. CRAWFORD	G. CURETON
F. DAVIS	E. DAWSON	SECOND ROW:	E. DERICKSON	E. DESAUSSURE	C. DORSEY
C. DOWNING	D. DUDLEY	THIRD ROW:	A. DUNBAR	V. EARLE	J. EAVES
A. ERLICH	M. FERGUSON	FOURTH ROW:	*M. EATON	D. FOOSHE	L. GILLESPY
			E. FLINN		

*No Picture

SILHOUETTE



A. GOLUCKE

M. J. GOODRICH

FIRST ROW:

M. GREGORY

F. GUETH

J. B. HALL

*F. GLENN

E. HAMILTON

E. HARVEY

SECOND ROW:

H. HENDRICKS

E. HUGHES

R. W. IRVINE

THIRD ROW:

A. JERNIGAN

M. JERVEY

L. JONES

M. KAUFMAN

J. KENNEDY

FOURTH ROW:

C. KIRKLAND

M. LAMB

K. LEARY

S. MARSH

M. MARTIN

*K. LOTT

*No Picture

THE SILHOUETTE



F. MEDLIN	S. MESSER	FIRST ROW: B. MILLER	E. MITCHELL	E. L. MOORE
E. MOORE	M. MORRIS	SECOND ROW: F. MCCOY *M. MCCALLIE	H. MCLAURIN	R. MCLEAN
A. MCWHORTER	C. NASH	THIRD ROW: M. OGDEN	C. OWEN	J. PATRICK
C. PAYNE	S. PEAKE	FOURTH ROW: M. A. PHELPS *S. L. POTTS	L. POPE	S. PRESTON

*No Picture

THE SILHOUETTE



M. QUINLAN	E. REID	FIRST ROW:	E. ROBERTS	L. RUSSELL
		H. RESPES		
V. SCOTT	V. SEARS	SECOND ROW:	N. SIMPSON	D. SMITH
		M. SHANKLIN		
J. SMITH	H. SNYDER	THIRD ROW:	E. STEPHENS	R. STEPHENS
		M. STACKHOUSE		
M. STOKLEY	B. W. STOWE	FOURTH ROW:	R. TAYLOR	M. TERRY
		C. TAYLOR		

THE SILHOUETTE



FIRST ROW:
M. L. THAMES H. TODD S. TOWNSEND M. TRAMMELL A. TURNER

SECOND ROW:
M. VAUGHN C. WELLBORN H. WILLIAMS F. WILLIAMSON

THIRD ROW:
P. WILLOUGHBY E. WILDER R. WILSON

FOURTH ROW:
E. M. WINSLOW M. WOOLFOLK O. YOUNG



FRESHMEN

L McCLELLAND

Freshman Class



ADELE ARBUCKLE

CHOPIN HUDSON



ELAINE EXTON

COLORS:

Gold and Black

OFFICERS:

ADELE ARBUCKLE *President*

CHOPIN HUDSON *Vice-President*

ELAINE EXTON *Secretary-Treasurer*

MISS BLAND { *Faculty Members*
MISS CHRISTIE }

SILHOUETTE



Freshman Roll

Dorothy Jane Allen	Carolyn Freidheim Heyman	Dora Lucille Porter
Mary Wallace Anthony	Florence Alden Hill	Anna Posner
Adele Arbuckle	Frances Elizabeth Hill	Mary Morford Potter
Elizabeth Hunt Arnold	Sarah Dummond Hill	Ruth Petty Pringle
Margaret Elizabeth Askev	Eleanor Houghton	Katherine Purdie
Virginia Ramsey Baker	Octavia Aubrey Howard	Alice Houston Quarles
Louise Virginia Baston	Alma Fraser Howerton	Mary Elizabeth Quinlan
Mary Elinore Bellingrath	Annie Chopin Hudson	Martha Exum Ransom
Jane Bland	Betty Hudson	Helen Conley Ray
Anna Eugenia Boone	Helen Grace Jacobson	Emma A. Reckerman
Anita Boswell	Frances Eugenia Johnson	Kitty Starling Reid
Annie Miriam Boyd	Helen Lewis Johnston	Mary Laura Robinson
Mildred Bradley	Caroline Elizabeth Jones	Lena Lowe Rogers
Laura Morrison Brown	Elise Cecile Jones	Julia Holt Rowan
Sarah Lou Bullock	Helen Kauffman	Sarah Elizabeth Rudd
Anna Louise Chandler	Elizabeth Little Kelly	Violet Scott
Christine Cheney	Dorothy Jackson Kethley	Margaret Jeannette Shaw
Mollie Watt Childress	Martha Kirven	Elizabeth Gallagher Simpson
Jane Douglass Clark	Elizabeth Virginia Knox	Janie Agnes Skelton
Jewell Mitchell Coxwell	Perle Landau	Harriet Louisa Smith
Sarah Ellen Coyle	Elsie Andrews Lee	Martha Sprinkle
Nancy Jane Crockett	Etoile Lumpkin	Mary Sprinkle
Marjorie Louise Daniel	Mildred Louise McCalip	Laeluis Stallings
Ellen McDowell Davis	Anne Elizabeth McCallie	Virginia Elizabeth Stokes
Helen Duke	Hilda Camp McCurdy	Julia Terrell
Mildred E. Duncan	Frances Carolyn McEwen	Martha Virginia Theobald
Ruth LaRoche Dunwoody	Grace Elizabeth McKee	Elizabeth Cornelia Thompson
Margaret Ruth Ethridge	Jane Elizabeth McLaughlin	Julia Elizabeth Thompson
Elaine Exton	Shirley B. McPhaul	Elizabeth Agnes Thorne
Josephine Kenton Fairchild	Ruth Gore Mann	Martha Eggleston Tower
Marion Fielder	Helen Pittman Manry	Cornelia Wallace
Helen Adele Friedman	Margaret Louise Marshall	Louise Folker Ware
Mary Katherine Gay	Louise Miller	Annie Zillah Watson
Lena Gerschow	Margaret Eleanor Minnis	Martha North Watson
Mary Elizabeth Gillespie	Pauline Page Moose	Mary Bryant Webb
Ellen Phelan Goldthwaite	Katherine Elizabeth Morrow	Elizabeth Ann Weeden
Mary Gordon Golucke	Helen Frances Murray	Margaret Glassell Weeks
Jean McCulloch Grey	Frances Musgrave	Josephine Wells
Nina Anderson Hammond	Jeannette Nichols	Ellen Dorothy Wilder
Miriam Head	Fanny Willis Niles	Gertrude Willoughby
Elizabeth Ann Heath	Eleanor Mary Norton	Julia Wilson
Ruth Helm	Clara Knox Nunnally	Ellene Glenn Winn
Christian McNat Henderson.	Mary Evelyn Olliffe	Mary Castleman Winter
Martha Louise Herbert	Katherine Sillers Owen	Ann Elizabeth Woolfolk
	Ruth Peck	

Irregulars



FOURTH YEAR IRREGULARS

DOROTHY BROWN *St. Petersburg, Florida*

SECOND YEAR IRREGULARS

ALICE GARRETSON* *Decatur, Georgia*
 LOIS MCCLELLAND *Maxton, North Carolina*
 MERA NEARY *Decatur, Georgia*
 MARY RUTH ROUNTREE *Summit, Georgia*
 MARY VIRGINIA TRANSOU *Atlanta, Georgia*

FIRST YEAR IRREGULARS

DOROTHY LANE *Waynesville, North Carolina*

SPECIAL STUDENT

ANNIE LLOYD LIGGIN* *Decatur, Georgia*

UNCLASSIFIED STUDENTS

EVELYN BECKER *Decatur, Georgia*
 ANNE DEAN *Spartanburg, South Carolina*
 MARY ELIZABETH JORDAN* *Barney, Georgia*
 ELIZABETH KEITH *Louisville, Kentucky*
 MARGARET MCCOY *Detroit, Michigan*
 EUGENIA McDONALD *Yatesville, Georgia*
 FRANCES ROWE *Birmingham, Alabama*
 VIRGINIA SHAFFNER* *Winston-Salem, North Carolina*
 ELIZABETH SMITH *Atlanta, Georgia*

*No Picture.

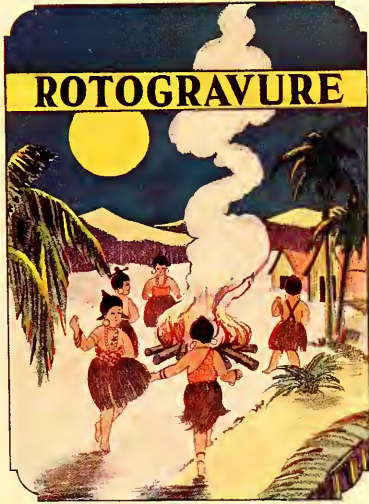
The SILHOUETTE



1928

One Hundred and Ten

ROTOGRAVURE





Main Tower



Investure



The Gate



"Miss Agnes Scott"—
Leila Anderson



The Entrance of Main Hall



Inman Coffee

Right—The Anna Young Alumnae House





The Silhouette
Tea Room



Cotillion Dance



Main Walk



Most Popular—
Sarah Townsend



The Book Store



Below—
Entrance to the
Tea House



Dr. Sweet's Office



Right—Sophomore-Senior Breakfast at East
Lake Club





The Faculty Take-Off



The Fire Department



Above—
The
Infirmary



Most Original—
Margaret Armstrong



The Grandmother Party



Sophomore Week



The Gymnasium Office



Venable Camp Lake



Pine Lodge—Stone Mountain



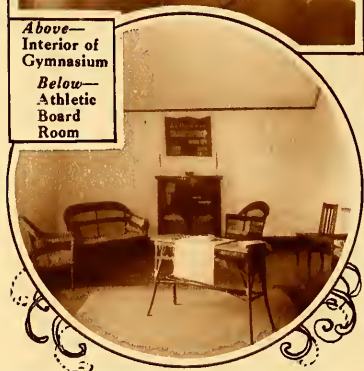
Most Athletic—
Katherine Pasco



Above—
Interior of
Gymnasium



Swimming Pool



Below—
Athletic
Board
Room



Hockey Game

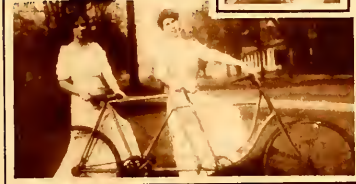


Faculty-Student Baseball Game

SENIOR FASHION SHOW



Follies
of 1933



Most Stylish—Julia Rowan



Fashions
of 1776



Founders'
Day





Library-Reading Room



The Book Burning



Armistead English Room



Most Intellectual—
Janet MacDonald



Carnegie Library



"Ella"



Commencement—Senior-Sophomore Procession



The Colonnade



Most Attractive—
Josephine Walker



Inman Hall



Rebekah Scott Hall



Science
Hall



Right and Above—View from the Portico of Main Building



Thanksgiving Dance



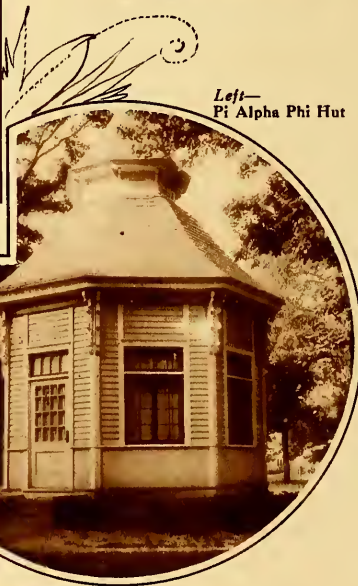
Best Dancer—
Lila Porcher



Glee Club Operetta



Left—Grandmother Party



Left—
Pi Alpha Phi Hut

Bucher Scott Gymnasium

ORGANIZATIONS



List of Organizations

STUDENT GOVERNMENT
ASSOCIATION
Y. W. C. A.
HOASC
STUDENT OFFICIALS
LECTURE ASSOCIATION
DAY STUDENTS
PHI ALPHA PHI
BLACKFRIARS
MAY DAY COMMITTEE
ORCHESTRA
GLEE CLUB
B. O. Z.
FOLIO
K. U. B.
SALUTATION AND THE CAT
POETRY CLUB
PEN AND BRUSH CLUB
CLASSICAL CLUB
PHI KAPPA KAPPA
AGNESI MATH CLUB
BIBLE CLUB
CHEMISTRY CLUB
FRENCH CLUB
COTILLION CLUB
MISSISSIPPI CLUB
VIRGINIA CLUB
PHI BETA KAPPA



JANET McDONALD



Student Government Association

EXECUTIVE COMMITTEE

- JANET MACDONALD *President*
- NELL HILLHOUSE *First Vice-President*
- MARGARET RICE *Second Vice-President*
- GEORGIA WATSON *Third Vice-President*
- SARA JOHNSTON *Secretary*
- JANE GREY *Treasurer*

CLASS REPRESENTATIVES

- ELIZABETH COLE *Senior Representative*
- MARY SHEWMAKER *Senior Representative*
- MARION GREENE *Junior Representative*
- ELINORE MORGAN *Junior Representative*
- DOROTHY SMITH *Sophomore Representative*
- MARY TERRY *Sophomore Representative*
- ELLEN DAVIS *Freshman Representative*
- LOUISE CHANDLER *Freshman Representative*

The SILHOUETTE



Y. W. C. A.



LEILA ANDERSON, President



CABINET OFFICERS

LEILA ANDERSON President
MIRIAM ANDERSON . . . Vice-President

CHARLOTTE HUNTER Secretary
RUTH WORTH Treasurer

MARGARET KEITH Undergraduate Representative

ELINORE MORGAN Chairman Social Committee
AUGUSTA ROBERTS Chairman Social Service Committee
RACHEL PAXON Chairman Religious Work
MARGARET ARMSTRONG Chairman World Fellowship Committee
HELEN RESPES Day Student Representative

The SILHOUETTE



1928

The SILHOUETTE

Hoasc Roll

1916

Jeanette Victor
Ora Glenn
Martha Ross
Louise Wilson
Maryellen Harvey
Eloise Gay
Alice Weatherly
Evelyn Goode
Ray Harvison
Nell Frye

1917

Gertrude Amundsen
India Hunt
Scott Payne
Laurie Caldwell
Louise Ware
Anne Kyle
Regina Pinkton
Janet Newton
A. S. Donaldson
Georgiana White
Ruth Nisbet
V. Y. White

1918

Margaret Leyburn
Samilie Lowe
R. L. Estes
Emma Jones
Hallie Alexander
Ruth Anderson
Katherine Seay
Olive Hardwick
Lois Eve

1919

Lucy Durr
Frances Glasgow
Mary Brock Mallard
Claire Elliot
Almeda Hutchison
Julia Lake Skinner
Margaret Rowe
Dorothy Thigpen
Goldie Ham
Llewellyn Wilburn
Elizabeth Watkins
Lulu Smith

1920

Elizabeth Allen
Margaret Bland
Lois MacIntyre
Julia Hagood
Louise Slack
Laura S. Molley
Virginia McLaughlin
Marion McCamey
Anne Houston
Mary Burnett

1921

Charlotte Bell
Margaret Bell
Aimee D. Glover
Ellen Wilson
Rachel Rushton
Anna Marie Landress
Alice Jones
Frances C. Markley
Janef Preston
Margaret McLaughlin
Jean McAllister
Fanny McCaa
Charlotte Newton
Dorothy Allen

1922

Nell Buchanan
Cama Burgess
Ruth Hall
Oaura Oliver
Lilburne Ivey
Ruth Scandrett
Mary McLellan
Althea Stephens
Ruth Virden
Ethel Ware
Robertta Love
Sarah Till
Elizabeth Wilson

1923

Quenelle Harrold
Eleanor Hyde
Eloise Knight
Elizabeth McClure
Hilda McConnell
Alice Virden
Nannie Campbell
Mary Goodrich
Emily Guille
Elizabeth Hoke
Lucile Little
Valeria Posey
Elizabeth Ranson

1924

Beulah Davidson
Mary Greene
Victoria Howie
Carrie Scandrett
D. F. Smith
Polly Stone
Francis Amis
Janice Brown
Nancy Evans
Emmie Picklin
Frances Gilliland
Barron Hyatt
Wenona Peck

1925

Frances Bitzer
Louise Buchanan
Isabel Ferguson
Dorothy Keith
Frances Lincoln
Mary Ann McKinney
Emily Spivey
Mary Wallace Kirk
Elizabeth Cheatham
Margaret Hyatt
Mary Keesler
Martha Lin Manly
Margery Speake
Ellen Walker
Eugenia Thompson
Pocahontas Wight

1926

Virginia Browning
Louisa Duls
Ellen Fain
Catherine Craeber
Virginia Peeler
Sarah Slaughter
Margaret Tufts
Leone Bowers
Eloise Harris
Helena Hermance
Florence Perkins

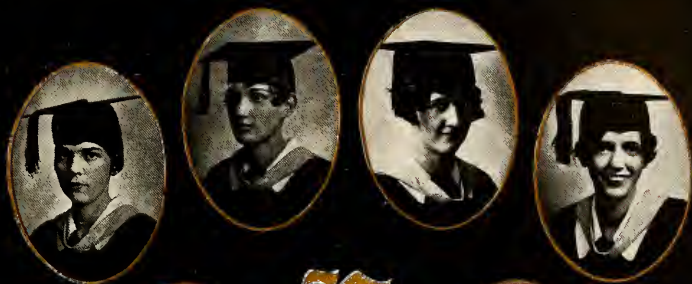
1927

Elsa Jacobsen
Ellen Douglass Leyburn
Carolina McCall
Elizabeth Norfleet
Evalyn Powell
Robertta Winter
Eleanore Albright
Maurine Bledsoe
Josephine Bridgman
Elizabeth Clark
Marcia Green
Rachel Henderlite
Elizabeth Lilly
Helen Lewis
Elizabeth Lynn

1928

Leila Anderson
Miriam Anderson
Virginia Carrier
Elizabeth Grier
Mary Ray Dobyns
Carolyn Essig
Nell Hillhouse
Janet MacDonald
Mary Bell McConkey
Bayliss McShane
Mary Perkinson
Margaret Rice
Mary Riviere
Georgia Watson

1928





Student Officials

- VIRGINIA NORRIS *Recorder of Points*
HUDA DEMENT *Chairman of the Auditing Committee*
DOROTHY HARPER *Student Treasurer*
MARY RAY DOBYNS *Fire Chief*
MARGARET KEITH *Member of College Council*

Lecture Association



EMILY COPE

MARY SHEWMAKER



MISS TORRANCE

OFFICERS

- EMILY COPE *President*
- MARY SHEWMAKER . . . *Secretary-Treasurer*
- MISS TORRANCE *Faculty Chairman*

LECTURERS

Ellenor Cook, assisted by Eugenia Follard, Pianist, "Folk Songs and Dances;" Dean Gordon J. Laing, "Literature and Leisure;" John Erskine, "The Delight of Good Books;" Mrs. H. H. A. Beach, "Lecture-Recital."

ADVISORY BOARD

- MARY JANE GOODRICH . *Poster Chairman*
- JOSEPHINE WALKER . . . *Senior Member*
- MARION GREEN *Junior Member*
- MARGARET OGFEN . . . *Sophomore Member*
- ELAINE EXTON *Freshman Member*
- MISS MCKINNEY *Faculty Member*
- MR. STUKES *Faculty Member*

Day Students



FRANCES HARGIS



ELSIE DAVIS

OFFICERS

- FRANCES HARGIS *President*
- ELSIE DAVIS *Vice-President*
- LOIS SMITH *Hike Manager*



LOIS SMITH

Pi Alpha Phi



OFFICERS

ESTHER NISBET	<i>President</i>
PATRICIA COLLINS	<i>Vice-President</i>
MARY SHEPHERD	<i>Secretary</i>
MARY RIVIERE	<i>Treasurer</i>
FRANCES CRAIGHEAD	<i>Member of Debating Council</i>
MARGARET KEITH	<i>Member of Debating Council</i>

MEMBERS

*PATRICIA COLLINS
 FRANCES CRAIGHEAD
 *AUGUSTA DUNBAR
 *CAROLYN ESSIG
 ELIZABETH FLYNN
 MARGARET GERIG
 EMILIE HARVEY
 CHARLOTTE HUNTER

ELAINE JACOBSEN
 ALICE JERNIGAN
 MARGARET KEITH
 *JANET MACDONALD
 MARY McCALLIE
 *FRANCES MESSER
 *ESTHER NISBET
 *ELEANOR LEE NORRIS
 CARRINGTON OWEN

*MARY RIVIERE
 HELEN SISSON
 MARY SHEWMAKER
 *MARTHA STACKHOUSE
 MARY TRAMMELL
 *POLLY VAUGHN
 *GEORGIA WATSON
 HARRIETT WILLIAMS

*Or Twelve.

Blackfriars



OFFICERS

MARY SAYWARD	President
ELIZABETH ALLGOOD	Vice-President
SARAH WHITE	Secretary
POLLY VAUGHN	Treasurer
JOSEPHINE WALKER	Stage Manager
IRENE LOWRANCE	Costume Manager
SARAH GLENN	Lighting Manager
LOUISE GIRARDEAU	Advertising Manager

MEMBERS

E. ALLGOOD
 M. ARMSTRONG
 M. BAKER
 M. BROWN
 S. CARTER
 D. CHEEK
 S. COTHRAN
 G. DUNBAR
 M. GERIG
 L. GIRARDEAU
 S. GLENN
 M. GREEN
 F. HARGIS

B. KEITH
 J. LAMONT
 L. LeCONTE
 I. LOWRANCE
 A. MOORE
 L. MORGAN
 J. MacDONALD
 L. McCLELLAND
 M. NEARY
 M. OGDEN
 C. OWEN
 L. PORCHER

M. RIVIERE
 A. ROBERTS
 M. SAYWARD
 J. SMITH
 B. W. STOWE
 L. SYDNOR
 M. L. THAMES
 E. TYSON
 P. VAUGHN
 J. WALKER
 L. WHITE
 S. WHITE
 R. WILSON

May Day Committee



OFFICERS

- | | | |
|-------------------|-------|--------------------|
| ANNE MCCOLLUM | | Chairman |
| MARY NELSON LOGAN | | Business Manager |
| LILA PORCHER | | Costume Manager |
| MARY ELLIS | | Publicity Chairman |
| RAEMOND WILSON | | Property Manager |
| HAZEL BROWN | | Poster Chairman |
| MARY RAY DOBYNS | | Music Chairman |
| MISS RANDOLPH | | Faculty Advisor |

The SILHOUETTE

The Orchestra



GLEE CLUB



P. A. ADAMS



J. BLAND



D. CHEEK



E. FREELAND



L. BROWN



L. BRIDGEMAN



C. DOWNING



M. J. GOORICH



L. BRIGGS



S. CURRIE



H. ELTON



F. HILL



V. CAMERON



D. FOOSIE



A. F. HOWERTON





M. JERVY



K. LOTT



M. J. Mc COY



C. PAYNE



H. SESSIONS



V. KAMPER



L. LE CONTE



C. K. NUNNALLY



E. REID



H. TODD



D. KEMTLEY



V. MILLER



NAPIER



E. ROARK



WOLFE



J. KENNEDY



P. MOOSE



P. PAXON



M.R. ROUNDTREE



O. YOUNG

THE SILHOUETTE

B. O. Z.



CAROLYN ESSIG

VIRGINIA NORRIS



MISS CHRISTIE

OFFICERS

- CAROLYN ESSIG *President*
- VIRGINIA NORRIS *Secretary*
- MISS CHRISTIE *Faculty Member*

MEMBERS

- | | |
|------------------|------------------|
| Elizabeth Becker | Emily Kingsbery |
| Myrtle Bledsoe | Anne McCollum |
| Mary Ellis | Edith McGranahan |
| Carolyn Essig | Virginia Norris |
| | Rosaltha Sanders |

The SILHOUETTE

Folio



MARGARET ARMSTRONG

POLLY VAUGHN

OFFICERS

MARGARET ARMSTRONG *President*

POLLY VAUGHN *Secretary*

MISS STONE *Faculty Member*

MEMBERS

Margaret Armstrong	Helen Jackson
Augusta Dunbar	Polly Vaughn
Mary Gregory	Raemond Wilson
Ellene Winn	



MISS STONE

THE SILHOUETTE

K. U. B.



ANNE McCOLLUM



IRENE LOWRANCE



LOUISE GIRARDEAU

OFFICERS

- ANNE McCOLLUM *President*
 IRENE LOWRANCE *Vice-President*
 LOUISE GIRARDEAU *Secretary*

MEMBERS

- | | |
|------------------|------------------|
| Margaret Andrea | Irene Lowrance |
| Laura Brown | Alice Jernigan |
| Mary Ray Dobyns | Anne McCollum |
| Virginia Earle | Edith McGranahan |
| Louise Girardeau | Caroline Nash |
| Katherine Lott | Virginia Norris |
| | Helen Ridley |

The SILHOUETTE

The Salutation and the Cat



BETTY GASH



MARGARET GARRETSON

OFFICERS

- BETTY GASH *President*
MARGARET GARRETSON *Secretary*
MISS CHRISTIE *Faculty Member*

MEMBERS

- Mary Ellis Mary Lanier
Margaret Garretson Geraldine LeMay
Betty Gash Mary Ramage
 Hazel Woffle



MISS CHRISTIE

1928

Poetry Club



EMILY KINGSBERY



MARY RIVIERE



MISS PRESTON

OFFICERS

- EMILY KINGSBERY *President*
- MARY RIVIERE *Secretary*
- MISS PRESTON *Faculty Member*

MEMBERS

- | | |
|----------------|-----------------|
| Jean Alexander | Alice Jernigan |
| Myrtle Bledsoe | Emily Kingsbery |
| Emily Cope | Mary Riviere |
| Mary Cope | Mary Shewmaker |
| Virginia Earle | Georgia Watson |
| | Raemond Wilson |

FACULTY MEMBERS

- Miss Margaret Bland
- Miss Elizabeth Cheatham
- Miss Helen Lewis
- Miss Carolina McCall
- Miss Janef Preston
- Miss Louise McKinney

Pen and Brush Club



LUCRETIA MORGAN

MYRA JERVEY

OFFICERS

- LUCRETIA MORGAN *President*
- MYRA JERVEY *Vice-President*
- ANNE ERLICH *Secretary*

MEMBERS

- Evalyn Becker
- Hazel Brown
- Helon Brown
- Virginia Carrier
- Mary Crenshaw
- Clemmie Nette Downing
- Jane Eaves
- Anne Erlich
- Betty Fuller
- Louise Girardeau
- Myra Jervey
- Dorothy Lane
- Annie Lloyd Liggin
- Irene Lowrance
- Alma Metcalf
- Lois McClelland
- Lucretia Morgan
- Lila Porcher
- Shannon Preston
- Mary Rountree
- Marguerite Russell
- Sarah Southerland
- Martha North Watson



ANNE ERLICH

The SILHOUETTE

Classical Club



FRANCES CRAIGHEAD

DOROTHY HARPER



JULIA McLENDON

OFFICERS

- FRANCES CRAIGHEAD *President*
 DOROTHY HARPER *Vice-President*
 JULIA McLENDON *Secretary-Treasurer*

MEMBERS

- | | |
|--------------|----------------|
| G. Austin | E. Mitchell |
| F. Brown | J. Mulliss |
| M. Chapman | M. B. McConkey |
| L. Combs | F. McCoy |
| L. M. Cook | J. McLendon |
| F. Craighead | J. Napier |
| E. Derickson | M. Overton |
| D. Fooshe | M. Perkinson |
| B. Gash | S. L. Potts |
| A. Glenn | S. M. Rickard |
| M. Griffin | L. Russell |
| I. Gueth | M. Sayward |
| D. Harper | V. Shaffner |
| A. Hunter | N. Simpson |
| M. Keith | F. Smith |
| H. King | J. Smith |
| I. Lowrance | L. Smith |
| S. Marsh | B. W. Stowe |
| A. Metcalfe | C. Taylor |
| F. Medlin | R. Taylor |
| | H. Todd |

Phi Kappa Kappa



HELEN KAUFMAN



HARRIETT SMITH

OFFICERS

HELEN KAUFMAN *President*
 HARRIETT SMITH *Vice-President*
 ALMA FRASER HOWERTON *Secretary*

MEMBERS

D. Allen	M. Minnis
M. W. Anthony	K. Morrow
V. Baker	F. Murray
L. Baston	F. Musgrave
A. Boswell	A. McCallie
S. L. Bullock	J. McLaughlen
M. Childress	F. W. Niles
J. Coxwell	E. Norton
S. Coyle	C. K. Nunnally
M. Daniel	E. Oliff
E. Davis	K. Owen
R. Etheredge	K. Purdie
M. Fielder	M. Potter
E. Gillespie	M. Ransom
M. C. Golucke	L. Robinson
J. Grey	H. Smith
E. Heath	L. Stallings
C. Henderson	J. Shaw
C. Heyman	A. Skelton
O. Howard	M. Sprinkle
A. F. Howerton	E. Winn
E. Jones	G. Willoughby
E. Johnson	L. Ware
H. Kauffman	A. Z. Watson
E. Kelly	J. Wells
E. Lumpkin	M. N. Watson
M. Marshall	M. Weeks



ALMA FRASER HOWERTON

Agnesi Math Club



ELIZABETH ROARK

ELLOT MAY McLELLON



KATHERINE PASCO

OFFICERS

- ELIZABETH ROARK *President*
 ELLOT MAY McLELLON *Vice-President*
 KATHERINE PASCO *Secretary*

MEMBERS

- | | |
|----------------|--------------|
| S. Armfield | D. Hutton |
| J. Barry | M. Kaufman |
| E. Becker | E. Keith |
| M. Brown | V. M. Love |
| G. Cureton | E. McLellon |
| E. Davis | A. McWhorter |
| H. Dement | E. Merritt |
| D. Dudley | L. Mills |
| H. Fox | K. Pasco |
| I. Garretson | S. Preston |
| H. Gershcow | E. Roark |
| E. Gibson | F. Rowe |
| M. J. Goodrich | E. Ruff |
| M. Greenleaf | V. Shaffner |
| J. B. Hall | S. Townsend |
| M. Head | E. Williams |
| C. Hunter | O. Young |

Bible Club



ALMA METCALF

GERALDINE LEMAY

OFFICERS

ALMA METCALF *President*

GERALDINE LEMAY . . *Secretary-Treasurer*

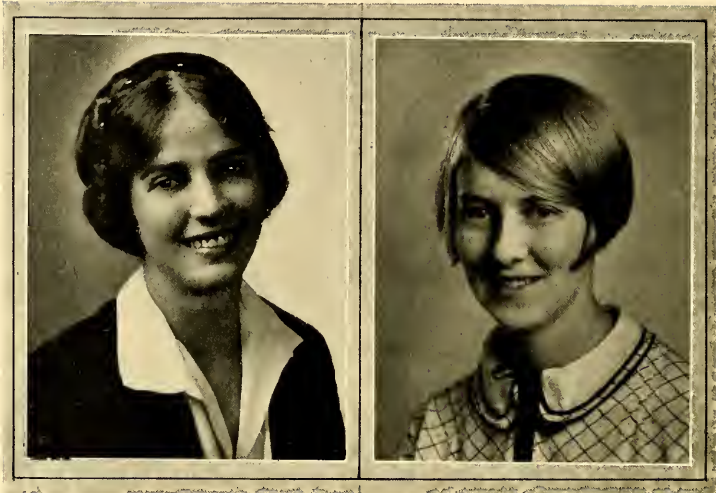
MEMBERS

- | | |
|---------------|----------------|
| M. Anderson | V. M. Love |
| C. Austin | A. Metcalf |
| T. Barksdale | E. Murphy |
| B. Bennett | E. M. McLellon |
| L. Briggs | F. McCoy |
| D. Brown | M. J. McCoy |
| H. Brown | M. Overton |
| M. Daniel | E. Pagageorge |
| S. Darrington | E. Roark |
| S. Davis | A. Roberts |
| M. Ficklin | F. Rowe |
| E. Freeland | L. Russell |
| E. Flinn | S. Stone |
| L. Gardner | F. Smith |
| E. Grier | E. Wallace |
| M. Jennings | V. Weeks |
| L. LeConte | C. H. Wellborn |
| G. LeMay | R. White |
- F. Wimbish



MRS. SYDENSTRICKER

Chemistry Club



EDNA VOLBERG

RUTH WORTH



BLANCHE MILLER

OFFICERS

- EDNA VOLBERG *President*
 RUTH WORTH *Vice-President*
 BLANCHE MILLER *Secretary*

MEMBERS

- | | |
|----------------|----------------|
| S. F. Anderson | M. McCalip |
| E. Bonham | S. McFadyen |
| F. Brown | H. McLaurin |
| M. Brown | J. McLellon |
| M. Broach | J. Mullis |
| M. Catron | R. Peck |
| D. Cheek | E. Papageorge |
| J. Clark | F. Rainey |
| S. Carrie | E. Rice |
| C. Dorsey | L. Robinson |
| J. Eaves | E. Stead |
| A. Garretson | R. Sanders |
| M. Garretson | M. Shanklin |
| A. Glenn | O. Spencer |
| E. Gohere | J. Shaw |
| L. Crier | A. Todd |
| E. Hatchett | E. Volberg |
| E. Hudson | M. Whittington |
| K. Hunter | R. Wilson |
| D. Keithley | R. Worth |
| K. Kirkland | M. Woolfolk |
| L. Lovejoy | B. Miller |

French Club



LOUISE GIRARDEAU



MARION GREEN

OFFICERS

- LOUISE GIRARDEAU *President*
 MARION GREEN *Vice-President*
 HELEN RIDLEY *Secretary*

MEMBERS

- | | |
|---------------|----------------|
| P. Adams | C. Hinman |
| M. Andrea | B. Hudson |
| E. Berry | E. Kingsbery |
| M. Bledsoe | A. Knight |
| E. Cope | G. LeMay |
| D. Coleman | V. Mills |
| F. Craighead | A. McCallie |
| E. Davis | J. Napier |
| F. Davis | C. Nash |
| S. Douglass | E. PupaGeorge |
| V. Earle | A. Quarles |
| E. Exton | H. Ridley |
| N. Fitzgerald | M. Riviere |
| E. Gaines | M. R. Rountree |
| L. Girardeau | M. Shepherd |
| O. Graves | L. Thomas |
| M. Green | M. Warren |
| J. B. Hall | S. White |
| P. Hastings | E. Woolfolk |



HELEN RIDLEY

Cotillion Club



ELIZA RAMEY

MARY MACKEY HOUGH



THERESE BARKSDALE

OFFICERS

ELIZA RAMEY *President*
 MARY MACKEY HOUGH *Vice-President*
 THERESE BARKSDALE *Secretary*

MEMBERS

H. Anderson	K. Hunter	L. Porcher
H. Alexander	P. Irvine	M. Prim
J. Barry	A. Jones	A. Quarles
E. Cole	E. Jones	L. Robertson
V. Cameron	H. Johnston	J. Rowan
J. Coffman	S. Johnston	V. Sears
E. Cope	H. Kalmon	H. Sisson
M. Cope	K. Kalmon	L. Sherlese
M. Crenshaw	V. Kamper	V. Skeen
B. DeSaussure	J. Kennedy	C. Spencer
H. Elton	A. Knight	L. Sydnor
M. Ferguson	L. LeConte	M. G. Steffner
E. Gaines	K. Lott	B. W. Stowe
A. Glenn	L. McClelland	E. Tyson
S. Glenn	E. McKee	J. Walker
N. Hammond	S. McPhaul	G. Watson
H. Hendricks	B. McShane	S. White
J. Houston	L. Moore	M. Winter
B. Hudson	J. Napier	O. Young
	C. Payne	

Mississippi Club



- T. BARKSDALE
- J. BARRY
- V. CAMERON
- M. McCALIP
- H. McLAUREN
- B. McSHANE
- K. OWEN
- K. REID
- M. WINTER
- H. SISSON

Mrs. SYDENSTRICKER, Sponsor

Virginia Club

F. BROWN
J. THOMPSON
H. WILLIAMS
M. SHANKLIN
M. WOOLFOLK
B. DAVIDSON
S. PEAKE
M. TOWER
E. JACOBSEN





Phi Beta Kappa

OFFICERS

MISS ALEXANDER	<i>President</i>
MISS McDOUGALL	<i>Vice-President</i>
MISS TORRANCE	<i>Secretary</i>
MISS EDLER	<i>Treasurer</i>
MR. STUKES	<i>Council Member</i>

CHARTER MEMBERS

EDITH MURIEL HARN, Ph.D.	Goucher, 1915
CLEO HEARON, Ph.D.	Chicago, 1914
ROBERT BENTON HOLT, A.B., M.S.	Wisconsin, 1901
LILLIAN SCORESBY SMITH, Ph.D.	Syracuse, 1904
SAMUEL GUERRY STUKES, A.B., M.A., B.O.	Davidson, 1923

FOUNDATION MEMBER

JAMES ROSS McCAIN, M.A., Ph.D., LL.D.

ALUMNAE MEMBERS

IDA LEE HILL, '06	MARY DAVIS, '27
LIZZABEL SAXON, '08	MIRIAM PRESTON, '27
RUTH MARION WISDOM, '09	REBA BAYLESS, '27
MARGARET McCALLIE, '09	FRANCES BUCHANAN, '27
LUCILLE ALEXANDER, '11	KENNETH MANER, '27
MARY WALLACE KIRK, '11	MAMIE SHAW, '27
ISABELLE CLARKE, '26	COURTNEY WILKINSON, '27
LOUISA DULS, '26	ROBERTA WINTER, '27
CATHERINE GRAEBER, '26	GRACE ZACHRY, '27
JUANITA GREER, '26	MARY ENZOR BYNUM (member elect)
NAN LINGLE, '26	EMMA HOPE MOSS DIECKMANN, (member elect)
GRACE AUGUSTA OGDEN, '26	JANIE W. MACCAUGHEY (member elect)
MARGARET WHITTINGTON, '26	SARAH BOOLS SPINKS (member elect)
SUSAN CLAYTON, '27	

STUDENT MEMBERS

MIRIAM PRESTON	MYRTLE BLEDSOE	ELIZABETH GRIER
FRANCIS BROWN	EVANGELINE PAFAGEORGE	

The SILHOUETTE



1928

One Hundred and Forty-two

ACTIVITIES





Publications

S. Preston

SILHOUETTE

The Silhouette



BAYLISS McSHANE

ELIZABETH GRIER



LILLIAN LeCONTE

STAFF

- BAYLISS McSHANE *Editor*
 ELIZABETH GRIER *Assistant Editor*
 LILLIAN LeCONTE *Business Manager*
 VIRGINIA CAMERON *Asst. Bus. Manager*
 LUCRETIA MORGAN *Art Editor*
 LUCY MAI COOK *Photographic Editor*

ASSOCIATE EDITORS

- MARIAN MARTIN *Classes*
 IRENE LOWRANCE *Rotogravure*
 MARION GREEN *Organizations*
 MILDRED GREENLEAF *Athletics*
 LOUISE SYDNOR *Features*
 SALLY COTHRAN *Joke Editor*
 LILA PORCHER *Cartoon Editor*
 SHANNON PRESTON *Asst. Art Editor*
 LOIS McCLELLAND *Asst. Art Editor*

-ADVERTISING MANAGERS

- HELEN ANDERSON AILEEN MOORE
 JEAN SIMMS

THE SILHOUETTE



1928

The Agonistic



CAROLYN ESSIG

ELIZABETH MERRITT



LILLIAN WHITE

STAFF

- CAROLYN ESSIG *Editor*
- ELIZABETH MERRITT *Assistant Editor*
- LILLIAN WHITE *Business Manager*
- MARTHA RILEY SELMAN . *Asst. Bus. Mgr.*
- ALICE JERNIGAN *Exchange Editor*

ASSOCIATE EDITORS

- EDITH McGRANAHAN . . . *Alumnae Editor*
- CHOPIN HUDSON *Athletic Editor*
- IRENE LOWRANCE *Society Editor*
- LOUISE SHERFESEE *Joke Editor*
- ERMINE MALONE *Circulation Manager*
- ELIZABETH ROARK *Asst. Cir. Manager*

THE EDITORIAL

The Agonistic

WILL INTEREST FRESHMEN

VOL. XII

UNIVERSITY COLLEGE, DELAWARE, WEDNESDAY, OCTOBER 2, 1927

NO. 2

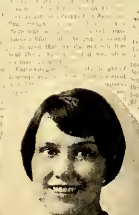
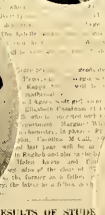
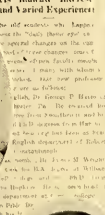
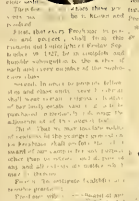
SCHOLASTIC MERIT ACKNOWLEDGED

SOPHOMORE REIGN TESTS METTLE OF FRESHMEN

Eight of the Class of '28, Four of '29 and Three of '30 Earned Coveted Honor.

Groups Entertain College Community at Three Dinners

New Professors Boast High Degree

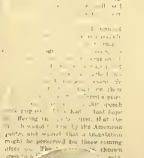


Union Show Great Success

and Cauts-Appealed to the College Girl



Mary ... is Mentioned in Briand Speech Translation



... the results of the studies which have been placed last Wednesday...

... the results of the studies which have been placed last Wednesday...

... the results of the studies which have been placed last Wednesday...

... the results of the studies which have been placed last Wednesday...

... the results of the studies which have been placed last Wednesday...

(Continued on Page 2)

The Aurora



EMILY KINGSBERY

MARY ELLIS



SARAH GLENN

STAFF

- EMILY KINGSBERY *Editor*
- MARY ELLIS *Assistant Editor*
- SARAH GLENN *Business Manager*
- EDITH MCCRANAHAN *Asst. Bus. Mgr.*
- MARGARET ARMSTRONG *Exchange Editor*

ASSOCIATE EDITORS

- ANNE MCCOLLUM *Associate Editor*
- MYRTLE BLEDSOE *Associate Editor*
- LILA PORCHER *Art Editor*
- ANNIE LLOYD LIGGIN *Asst. Art Editor*
- ERMINE MALONE *Circulation Manager*

The SILHOUETTE



AURORA



1927-1928



1928

JAPANESE SPEAKER TALKS ON CALIFORNIA PROBLEMS

MR. R. H. AKAGI SPEAKS AT Y. W. Stresses Problems of Second Generation.

Last Monday was very fortunate in having Mr. R. H. Akagi, secretary of the Japanese Student Christian association, talk to us. He was representative in answering to Agnes Scott students because he was one of the speakers of the Student Veterans Christianities at Decatur at whose Agnes Scott was represented. Mr. Akagi spoke to us about the Japanese problem in California, emphasizing two phases, that are getting the second generation. He said that the Japanese problem was not getting the support of the American people.

Japanese were first brought to America in 1869 by a contract entered into in the building of the transcontinental railroad. It was from 1870 to 1880 that a wave of Japanese came to California. The first American newspaper had an editorial in 1882 in which it was stated that the Japanese were a race of inferior people. It was not until 1890 that the Japanese were brought to the attention of the American government, and in 1907 came the first of the Japanese immigration laws. It was not until 1907 that the Japanese were brought to the attention of the American government, and in 1907 came the first of the Japanese immigration laws. It was not until 1907 that the Japanese were brought to the attention of the American government, and in 1907 came the first of the Japanese immigration laws.

Dr. Ellis to Be Commencement Speaker

Prominent Journalist and Author of Swarthmore, Pennsylvania. Will deliver the commencement address to the senior class. Dr. Ellis is the author of "The Problem of the Future" and "The Problem of the Past". He is a member of the American Academy of Arts and Letters. He is also a member of the National Academy of Sciences. He is a member of the National Academy of Medicine. He is a member of the National Academy of Religion. He is a member of the National Academy of Letters. He is a member of the National Academy of Music. He is a member of the National Academy of Drama. He is a member of the National Academy of Art. He is a member of the National Academy of Architecture. He is a member of the National Academy of Engineering. He is a member of the National Academy of Agriculture. He is a member of the National Academy of Commerce. He is a member of the National Academy of Industry. He is a member of the National Academy of Science. He is a member of the National Academy of Letters. He is a member of the National Academy of Music. He is a member of the National Academy of Drama. He is a member of the National Academy of Art. He is a member of the National Academy of Architecture. He is a member of the National Academy of Engineering. He is a member of the National Academy of Agriculture. He is a member of the National Academy of Commerce. He is a member of the National Academy of Industry. He is a member of the National Academy of Science.

John Erskine Lectures Here Monday

TALKSON "DELIGHT OF GREAT BOOKS" Erskine's Versatility Shows by Plans Recital in Chapel.

The college community enjoyed the privilege of hearing an illustrious English writer on Monday night, the well-known author, John Erskine. His lecture was always a delight in our ears, and he was a most interesting speaker. He is the author of "The Problem of the Future" and "The Problem of the Past". He is a member of the American Academy of Arts and Letters. He is also a member of the National Academy of Sciences. He is a member of the National Academy of Medicine. He is a member of the National Academy of Religion. He is a member of the National Academy of Letters. He is a member of the National Academy of Music. He is a member of the National Academy of Drama. He is a member of the National Academy of Art. He is a member of the National Academy of Architecture. He is a member of the National Academy of Engineering. He is a member of the National Academy of Agriculture. He is a member of the National Academy of Commerce. He is a member of the National Academy of Industry. He is a member of the National Academy of Science.

Erskine is a member of the American Academy of Arts and Letters. He is also a member of the National Academy of Sciences. He is a member of the National Academy of Medicine. He is a member of the National Academy of Religion. He is a member of the National Academy of Letters. He is a member of the National Academy of Music. He is a member of the National Academy of Drama. He is a member of the National Academy of Art. He is a member of the National Academy of Architecture. He is a member of the National Academy of Engineering. He is a member of the National Academy of Agriculture. He is a member of the National Academy of Commerce. He is a member of the National Academy of Industry. He is a member of the National Academy of Science.

DAVIDSON GLEE CLUB ENTERTAINS AGNES SCOTT

Frances Hargis Wins Prize \$100 for Play "Hero Warsip" Given First Prize in Savannah Contest.

The first of "frankness" by the Town Theatre of Savannah in the contest of plays staged by the Davidson Glee Club, and the prize of \$100 for the play "Hero Warsip" given first prize in Savannah contest. The play was written by Frances Hargis, a student of Agnes Scott College. It was a comedy in one act, and was performed by the Davidson Glee Club. The play was a success, and the Davidson Glee Club was highly complimented for their performance. The play was a success, and the Davidson Glee Club was highly complimented for their performance. The play was a success, and the Davidson Glee Club was highly complimented for their performance.

VARIED PROGRAM SATURDAY NIGHT Informal Reception Held at Almatone House.

The Davidson Glee Club was very fortunate in having a very varied and interesting program on Saturday night. The program was held at the Almatone House, and was a great success. The program included a variety of songs, plays, and other entertainment. The Davidson Glee Club was highly complimented for their performance. The program was a success, and the Davidson Glee Club was highly complimented for their performance. The program was a success, and the Davidson Glee Club was highly complimented for their performance.

Heifetz to Perform in Atlanta Friday

Fourth in Series of Artists Through By Southern Music Bureau

Joseph Heifetz, one of the greatest violinists, will appear at the Atlanta Music Bureau, March 7, 1929. He is a member of the American Academy of Arts and Letters. He is also a member of the National Academy of Sciences. He is a member of the National Academy of Medicine. He is a member of the National Academy of Religion. He is a member of the National Academy of Letters. He is a member of the National Academy of Music. He is a member of the National Academy of Drama. He is a member of the National Academy of Art. He is a member of the National Academy of Architecture. He is a member of the National Academy of Engineering. He is a member of the National Academy of Agriculture. He is a member of the National Academy of Commerce. He is a member of the National Academy of Industry. He is a member of the National Academy of Science.

Agonistic Cup to Be Awarded Wednesday

Representatives of Journal Constitution and College Have Been Named.

The Agonistic Cup contest for the year 1928-29 was held on Wednesday, March 6, 1929. The contest was held at the Atlanta Music Bureau. The contest was a success, and the Davidson Glee Club was highly complimented for their performance. The contest was a success, and the Davidson Glee Club was highly complimented for their performance. The contest was a success, and the Davidson Glee Club was highly complimented for their performance.

Vote for Max Queen, Election March 8-9

The annual program of the Y. W. C. A. is being held on March 8-9. The program is a success, and the Davidson Glee Club was highly complimented for their performance. The program is a success, and the Davidson Glee Club was highly complimented for their performance. The program is a success, and the Davidson Glee Club was highly complimented for their performance.

Mrs. Aiken Presents "An Evening in Dixie"

Mrs. Aiken presents "An Evening in Dixie" on March 7, 1929. The program is a success, and the Davidson Glee Club was highly complimented for their performance. The program is a success, and the Davidson Glee Club was highly complimented for their performance. The program is a success, and the Davidson Glee Club was highly complimented for their performance.

Vote for Max Queen, Election March 8-9

The annual program of the Y. W. C. A. is being held on March 8-9. The program is a success, and the Davidson Glee Club was highly complimented for their performance. The program is a success, and the Davidson Glee Club was highly complimented for their performance. The program is a success, and the Davidson Glee Club was highly complimented for their performance.

Mrs. Aiken Presents "An Evening in Dixie"

Mrs. Aiken presents "An Evening in Dixie" on March 7, 1929. The program is a success, and the Davidson Glee Club was highly complimented for their performance. The program is a success, and the Davidson Glee Club was highly complimented for their performance. The program is a success, and the Davidson Glee Club was highly complimented for their performance.

Vote for Max Queen, Election March 8-9

The annual program of the Y. W. C. A. is being held on March 8-9. The program is a success, and the Davidson Glee Club was highly complimented for their performance. The program is a success, and the Davidson Glee Club was highly complimented for their performance. The program is a success, and the Davidson Glee Club was highly complimented for their performance.



Events

S. Preston

SILHOUETTE

Sophomore Stunt



"BUDDHA LAND," Mislaïd in ACNES SCOTT COLLEGE

Discovered by THE SOPHOMORE CLASS On Saturday, October 8, 1927

Worshipped and Worshipping in the Order of Their Worship
GODS OF THE TEMPLE

The Spirit of Knowledge *Buddah of the Evil Eye*
 The Dignity of Learning, who was more than a piece of statuary..... *Margaret Ogden*
 See Smith Hop, goddess of pre-heaven standing..... *Ruth Bradford*
 Chem Holt Tee, god of incense..... *Helen Respass*
 Mae Chang Doogel Gee, goddess of ancestry..... *Frances Brown*
 Psych Stuk Kee, god of the entrance..... *Mary Louise Thames*
 Fri Voli Tee, who thought that the crime wave was a new kind of permanent..... *Anne Ehrlich*
 Teli-Ring-Ring, who spoke in terms of Dearborn 9111..... *Carrington Owen*
 Ellee Wing Wing, a big dark mystery..... *Katherine Leary*

PRIESTS

Lee Senior Su, who understood everything but how the sun, moon and stars kept their equilibrium while he was ruling another planet..... *Shannon Preston*
 Lee Junior Wu, who was so color blind that the greenest Freshman looked almost a normal shade to him *Mary Jane Goodrich*
 Lee Soph Loo, who was born to rule, and who did..... *Sara Townsend*

NOVICE

Lee Fresh Foo, who was laboring under delusions, not the least of which was the belief that he was as important as he felt..... *Polly Vaughn*

ATTENDANTS OF LEE FRESH FOO

Oh How Fresh..... *Belle Ward Stowe* Gee So Fresh..... *Katherine Crawford*
 Yet More Fresh..... *Zoo Woolfolk* Much Too Fresh..... *Polly Irvine*

THE TOO MANEE ATTENDANTS OF FRI VOLI TEE

Too Manee Week Ends Out..... *Carolyn Nash* Too Manee Mid Week Dates..... *Katherine Lott*
 Too Manee Trips to Town..... *Virginia Sears* Too Many Nick Les for Dopes..... *Betty De Saussure*
 Too Manee Pic Ture Shows..... *Virginia Earle* Too Manee Bull Ses Sions..... *Mary Cope*

THE CROWD

Lillian Russell Miriam Kaufman Helen Hendricks Dot Dudley Elizabeth Eaton
 Mary Trammell Lyan Moore Alice Jernigan Jo Smith Mary Brown

STUNT COMMITTEE

Chairman, Peggy Lou Armstrong

Mary McCallie Mary Gregory

Director of Costumes *Eleanor Bonham*
 Stage Manager *Myra Jersey*
 Director of Dancers *Raeownd Wilson*

1928

Freshman Stunt



A RYGHY

PITHY, PLEASAUNT AND MERIE TRASHIEDIE: INTYTULED

YE TUNNEY-MENT

PLAIED BEFORE THE DEANES MAIESTIE ON EIGHTH DAY AT NIGHT:

Seen and allowed, &c.

Made by ye FRESHMAN clafs with respectful admiration to the sophomore clafs.

YE PERSONS OF YE PLAY

- | | |
|---|-----------------------|
| 1. Ladie Agnes of Scotte-lande | <i>Julia Thompson</i> |
| 2. Sir Rodent, Green Knight of Frofh-lande | <i>Dittie Winter</i> |
| 3. He Who Laughs Laft | <i>Chopin Hudson</i> |
| Jetter to Sir Rodent | |
| 4. Lord Nightmare, Black Knight of Soph-lande | <i>Wessa Chandler</i> |
| 5. Redde Roudie | <i>Helen Jackson</i> |
| Jetter to Lord Nightmare | |
| 6. Ye Count of Tyme | <i>Harriet Smith</i> |
| Knights | Heralds |
| Ladies | Ye Towne Crier |
| Peafants | Ye merie mob |

SCENE I

Within ye Hall of ye faire Ladie

SCENE II

Ye Tunney-ment

The SILHOUETTE



LITTLE GIRL DAY

1928

The SILHOUETTE



INVESTITURE

SILHOUETTE



1926

Blackfriars

PRESENTS

FIGUREHEADS

(Louise Saunders)

Characters As They Enter

Prologue	Lillian White
The Princess Felicia of Ponderay	Mera Neary
Gertruda, her maid	Augusta Roberts
A Guard	Augusta Dunbar
The Prince of Dondometer	Margaret Armstrong
Another Guard	Dorothy Cheek

Place—A room in the Castle of Ponderay—the Realm of Phantasy.

Time—? Look down the centuries and select it for yourself.

Costume Designer (for all three plays) Irene Lourance

Assistant in Stage Design Louise Girardeau

THE TRYSTING PLACE

(Booth Tarkington)

Characters As They Enter

Mrs. Curtis, a widow	Lila Porcher
Lancelot Briggs, the Boy, obviously under twenty	Elizabeth Tyson
Mrs. Briggs, his mother	Aileen Moore
Jessie Briggs, his sister	Josphine Walker
Rupert Smith	Louise Sydnor
Mr. Ingoldsby	Marian Vaughn
The Mysterious Voice	? ? ? ? ? ? ?

Place—A room just off the lounge of a hotel.

Time—The present.

Assistant in Stage Design Lucretia Morgan

THE PURPLE DREAM

(Donald Breed)

Characters As They Enter

Mrs. Carver-Blythe	Margaret Gerig
Isobel, her daughter	Sarah Carter
Mary Ellen, the maid	Lillian Le Conte
Atkins, the butler	Marian Vaughn
The Dream Sir George	Margaret Keith
The Real Sir George	Marion Greene

Scent—Mrs. Carver-Blythe's living room in her house at Newport.

Time—The present.

The SILHOUETTE



FOUNDERS' DAY

1926

The SILHOUETTE



1920

The Intercollegiate Debate



NATIONAL UNION OF STUDENTS' TEAM
VS.
AGNES SCOTT COLLEGE

SUBJECT: *Resolved*: That the Only Effective Attitude Towards War Is Un-
compromising Pacifism.

THE DEBATERS

AFFIRMATIVE—NATIONAL UNION OF STUDENTS' TEAM:

FRANK ONGLEY DARVALL, University of Reading
ANDREW HADDON, University of Edinburgh.
JOHN RAMAGE, The London School of Economics and Political
Science.

NEGATIVE—AGNES SCOTT COLLEGE:

CAROLYN ESSIG
MARY RIVIERE
MARY SHEPHERD
ELEANOR LEE NORRIS, Alternate

The decision was rendered in favor of the negative by vote of the house
on the merits of the question.

The Intercollegiate Debate



VASSAR vs. AGNES SCOTT

JANET MacDONALD

MARY WALLER SHEPHERD

ELEANOR LEE NORRIS

SUBJECT: *Resolved:* That the United States Should Cease Protecting by Force of Arms Capital Invested in Foreign Lands Except After Formal Declaration of War.

AFFIRMATIVE—VASSAR COLLEGE

KATHRYN WILSON

HANNAH MOORIS

ETHEL COHEN, Alternate

NEGATIVE—AGNES SCOTT COLLEGE

ELEANOR LEE NORRIS

MARY WALLER SHEPHERD

JANET MacDONALD

The decision was rendered in favor of the negative.

The SILHOUETTE



1928

One Hundred and Sixty-two

The Play-Writing Class

OF

NAN BAGBY STEPHENS

PRODUCED UNDER THE DRAMATIC DIRECTION OF

Frances K. Gooch

PROGRAMME

VICE VERSA

(*Josephine Walker*)

Characters As They Enter

Mrs. North	Lillian White
William North, her only son	Louise Sydnor
Robert Foster, his best friend	Margaret Keith
Euretta Webb	Margaret Ogden
Nancy Carroll	Raemond Wilson
Mr. North	Mary Sayward

Time—December, 1927.

Place—The living room of the North home—Peachtree Road.

KITTY SEES IT THROUGH

(*Emily Kingsbery*)

Characters As They Enter

Annie Laurie	Mary Louise Thames
"Kitty," her mother	Mary Riviere
Don, the small boy	Sallie Cothran
Will, the father	Dorothy Cheek
Mrs. Saphrony Thomas, a neighbor	Belle Ward Stowe

Time—An evening in August.

Place—A mountain cabin in Western North Carolina.

HERO WORSHIP

(*Frances Hargis*)

Characters As They Enter

Mrs. Robby Robbins	Mary Sayward
Sam Robbins, the grandson	Jo Smith
Mr. Robby Robbins, of Civil War fame	Marion Greene
Mrs. Sally Robbins Mitchell, their daughter	Sarah White

Time—The present.

Place—The sitting-dining room of the Robbins home near Kingston, Georgia.

* "Hero Worship" has recently received the \$100.00 prize offered by Town Theatre at Savannah, Georgia. Entered in the Little Theatre Tournament and Belasco Cup Match, New York City, by the Town Theatre, the week of May 7-12.

The SILHOUETTE



LAUGH, RICANA

Presented by

SENIORPOLITAN OPERA COMPANY

CAST

Jest-tickle-me	Margaret Gerig
Jose	Mary Crenshaw
Cafeteria	Lillian LeConte
Ricana	Louise Sherjese
Vick Salveo	Mary Riviere
Doge	Dorothy Coleman
Mercurochrome	Mary Sayward

Corps de Ballet, Venetian Chorus, and Fascisti Encores positively permitted.



1928

One Hundred and Sixty-four

SILHOUETTE

The Dawn of Delight

By CAROLYN ESSIG

Scene: The earth a barren place and on the eve of May.

Time: In the early days before the history of the world began, when man labored and knew no joy.

SYNOPSIS—Part I.

The strains of somber music float over the earth. Joy, a radiant boy, and Youth, a dainty maiden, in whom the spirit of the dance is ever symbolized are driven upon the scene against their will by the sinister attendants of Gloom. The impotence of the two lovely figures is complete when the attendants encircle them. Gloom, black gowned and majestic in his confident bearing enters slowly beckoning to two groups of peasants clad in long dark robes who move in stumbling fashion to the mournful music. As the groups settle at the back, each peasant assuming an attitude of sleep, Gloom expresses his triumph then beckons to his followers who break their circle about Joy and Youth, majestically accompany him away.

The Evening Star begins her slow crossing of the heavens. Joy and Youth dance imploringly to the peasants but cannot awaken the aesthetic in their hearts, for Gloom has worked his spell. They begin to despair. A gilded messenger arrives to tell Joy that the Queen of Delight will come at the next dawn to be crowned on this earth before the people Joy has won to her. Joy sadly points out that he has failed. As a penalty the messenger takes from him his companion, Youth, and starts to leave with her, protesting, when the Evening Star glides forward. She tells Joy that in the heart of a flower to be found at World's End is an essence that will make a mortal respond to the spirit of the one who waves it. Rejoicing, Joy thanks the Star who returns to her course in the heavens. He urges the messenger to be gone and to bring the Queen, while he, smiling reassuringly to Youth, seeks for the flower at World's End.

INTERLUDE

Fireflies begin to flit about in the twilight. The Evening Star moves slowly as silver breezes and light grey clouds bring on an evening hung with a golden crescent moon. They are dispersed by the flaming sun of early morning. With her attendants she makes merry in all the beauty of her natural glory till day is well begun. The peasants do not notice.

Fairy attendants make the scene an appropriate setting for the Queen of Delight by tossing rose garlands over three arbors on which Gloom's ancient ivy grows. Joy dances in gleefully with the flower from World's End just as the Messenger heralds the arrival of the Queen who enters with her maids. Joy crowns the lovely being, Queen of Delight, in the hearts of men for one brief day on this earth even as she is eternally queen in other spheres.

Part II.

Joy carefully waves the flower plucked at World's End over the first peasant figure, tossing it at its feet. The figure slowly awakens, slowly drops the black robe, and, an Egyptian princess, gives herself up to the dance. Egyptian subjects slip out and imitate until they perform the first primitive dance. Happy, the princess returns to her place and tosses the flower to Greece, who next carries on the art. A god, who might have stepped from the Acropolis, awakens and seeks a sacrifice while worshipping youths and maidens dance on their way from the Temple. The Roman warrior next tosses off the dark robe and with his subjects glorifies manly strength. Hungary represents the most intricate of the Folk Dances which have brought pleasure to the humble and highborn throughout the ages. The next figure reverts from this early simplicity and invokes the Golden Age which flourished in the court dances in which messieurs and mesdemoiselles of the time of Louis XIV participated, and in the ballet with which the *Premiere Danseuse*, who has entered in a sedan chair, entertains the court. Far removed from this splendor, Gypsy maids of Spain learn the joy of dance and in their revelry to coquette with gypsy lovers. The magic flower is passed on to Harlequin who woos Columbine from her quaint window in Italy. Columbine's comic uncle sees them dancing and gives Harlequin a few anxious moments, but he tosses the flower to Russia. Moscow, veiled and brooding, hovers over her city as the keeper of the bells of the Great Military Prison rings them in warning and fear. Suddenly the fire of the besieged city leaps toward her and Gloom returns. Finding his spell has been broken he leads the flames for a moment in a frenzy of rage, then sends them violently against the veiled figure who at the last moment reveals herself as the inviolate Spirit of Russia, before whom the flames fall impotent. Gloom, his last weapon destroyed, slinks away while the Spirit of Moscow bids the peasant ring out the bells in triumph.

Part III.

Joy has indeed, through his magic flower, won the people of the earth to the Queen of Delight. She graciously gives to him Youth and decrees that ever after Joy and Youth shall go hand in hand bringing Delight to the hearts of men. At this moment a silvery piping is heard. It is the Piper of Spring who trips out, golden hoof and bright horns of the satyr-like charmer gleaming. He dances with Joy and Youth. They bid the people rise to honor the Queen whose day on earth has now ended. The Piper, Joy and Youth lead the way of the court. The joyous people follow closely to bid the Queen of Delight farewell at World's End.

THE SILHOUETTE

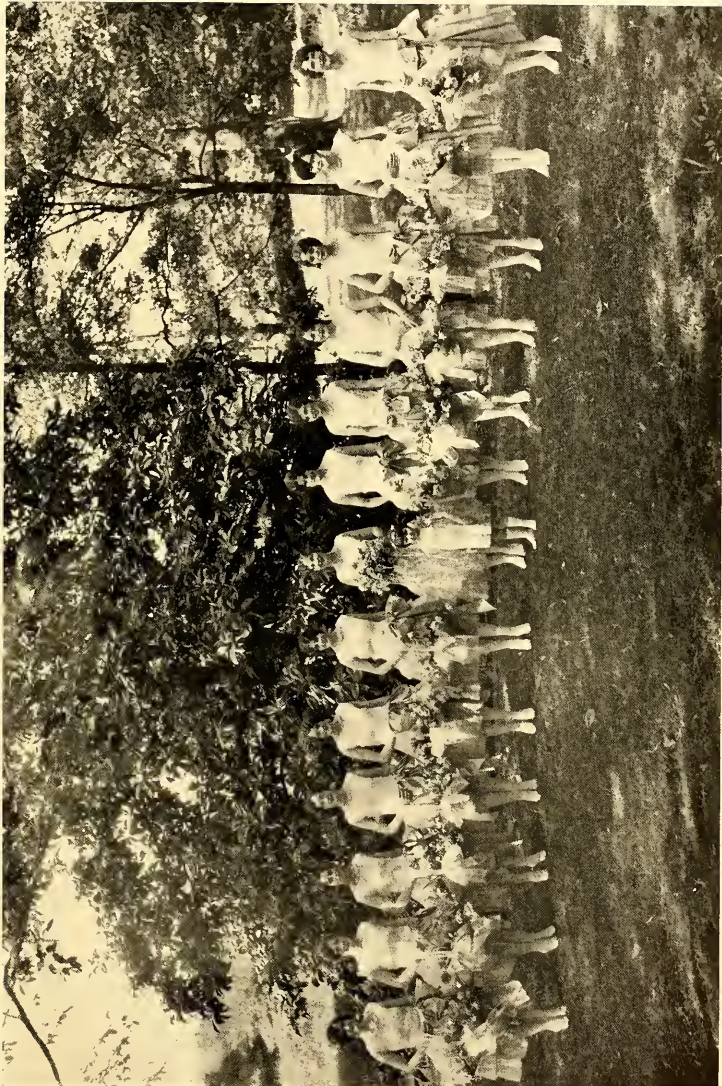


MARY BELL MCKONKEY, MAY QUEEN

1926

One Hundred and Sixty-six

SILHOUETTE



THE MAY COURT

1920



The Maids

FRANCES CRAIGHEAD
ALICE GARRETSON
HELEN HENDRICKS
CHARLOTTE HUNTER
KATHERINE HUNTER
HELEN JOHNSTON

ELIZABETH MURPHEY
EDITH McGRANAHAN
SHANNON PRESTON
ELIZABETH REID
ELIZABETH SMITH
JOSEPHINE WALKER

SILHOUETTE



MAY DAY SCENES

1928

The SILHOUETTE



MAY DAY SCENES

1926

ATHLETICS



Athletic Association

CHEER LEADERS

LIST OF SPORTS

HOCKEY

BASKETBALL

TRACK

BASEBALL

SWIMMING

TENNIS

MISS HEALTH, 1928

WEARERS OF A. S. C.

The SILHOUETTE

Athletic Association



MARY PERKINSON, *President*



OFFICERS

MARY PERKINSON	<i>President</i>	VIRGINIA CARRIER	<i>Secretary</i>
MARY MACKEY HOUGH	<i>Vice-President</i>	GENEVIEVE KNIGHT	<i>Treasurer</i>

MANAGERS

ELIZABETH FLINN	<i>Hockey Manager</i>
SARAH SOUTHERLAND	<i>Swimming Manager</i>
ELEANOR CASTLES	<i>Basketball</i>
ELIZABETH GRIER	<i>Track Manager</i>
CARRINGTON OWEN	<i>Baseball Manager</i>
CHARLOTTE HUNTER	<i>Hiking Manager</i>
BLANCHE MILLER	<i>Lost and Found Store</i>
SARA TOWNSEND	<i>Song Leader</i>
MARY RIVIERE	<i>Orchestra Leader</i>
MARY NELSON LOGAN	<i>Camp Manager</i>

The SILHOUETTE



1928

Cheer Leaders



L. ANDERSON
- SENIOR -

R. WORTH
- JUNIOR -

S. TOWNSEND
COLLEGE

S. TOWNSEND
- SOPHOMORE -

M. McCALIP
- FRESHMAN -



"REDD"

Hockey

SILHOUETTE



M. ARMSTRONG



J. WALKER



C. NASH



E. GRIER



M. ANDERSON



V. CARRIER



C. HUDSON



M. RILEY



E. FLINN



M. CRENSHAW



M. SAYWARD



C. OWEN

Senior Team



ELIZABETH GRIER, *Captain*

MARTHA RILEY, *Manager*

JOSEPHINE WALKER . . . *Center Forward*
MARY RIVIERE *Right Inner*
MARY PERKINSON *Right Inner*
ELIZABETH GRIER *Left Inner*
MIRIAM ANDERSON *Right Wing*
VIRGINIA CARRIER *Left Wing*
SARAH GLENN *Left Wing*
MARTHA RILEY *Center Half*
FRANCES HARGIS *Right Half*
JANET MACDONALD *Left Half*
MARY CRENSHAW *Right Full*
MARY SAYWARD *Left Full*
FRANCES BROWN *Goal Guard*



ELIZABETH GRIER, *Captain*

Junior Team



RUTH WORTH, *Captain*

RUTH WORTH, *Captain*
DOROTHY HUTTON, *Manager*

GENEVIEVE KNIGHT *Center Forward*
RUTH WORTH *Right Inner*
ELINORE MORGAN *Left Inner*
CHARLOTTE HUNTER *Right Wing*
SARA JOHNSTON *Left Wing*
KATHERINE PASCO *Center Half*
LOUISE FOWLER *Center Half*
DOROTHY HUTTON *Right Half*
ESTHER RICE *Left Half*
SARAH SOUTHERLAND *Right Full*
GERALDINE LEMAY *Left Full*
MARY NELSON LOGAN *Goal Guard*

Sophomore Team



MARGARET ARMSTRONG, *Captain*

CAROLYN NASH, *Manager*

MARGARET ARMSTRONG . . . *Center Forward*
CAROLYN NASH *Right Inner*
RUTH McLEAN *Left Inner*
EFFIE MAE WINSLOW *Right Wing*
MARTHA SHANKLIN *Left Wing*
ELIZABETH FLINN *Center Half*
ELIZABETH BERRY *Right Half*
WALTERETTE ARWOOD *Left Half*
SARA TOWNSEND *Right Full*
EMILIE HARVEY *Left Full*
CARRINGTON OWEN *Goal Guard*



MARGARET ARMSTRONG, *Captain*

Freshman Team



CHOPIN HUDSON, *Captain*

CHOPIN HUDSON, *Captain-Manager*

- JEAN GREY *Center Forward*
- MARY SPRINKLE *Right Inner*
- ELIZABETH WOOLFOLK *Left Inner*
- CHRISTINE CHENEY *Right Wing*
- MARTHA NORTH WATSON *Left Wing*
- CHOPIN HUDSON *Center Half*
- LOUISE MILLER *Right Half*
- KITTIE PURDIE *Left Half*
- SARAH HILL *Right Full*
- MILDRED McCALIP *Left Full*
- JULIA TERRELL *Goal Guard*



Basketball

The SILHOUETTE

Varsity Basketball Team



1928

The SILHOUETTE

Senior Basketball Team



MARGARET RICE, *Captain*
MARY CRENSHAW, *Manager*

- MARY RAY DOBYNS *Center*
- MARTHA RILEY *Side Center*
- MIRIAM ANDERSON *Forward*
- MARGARET RICE *Forward*
- DOROTHY HARPER *Forward*
- GWENDOLYN MCKINNON *Guard*
- ELIZABETH GRIER *Guard*
- VIRGINIA CARRIER *Guard*



MARGARET RICE, *Captain*

Junior Basketball Team



LUCILLE BRIDGMAN, *Captain*

LUCILLE BRIDGMAN, *Captain*
HELEN RIDLEY, *Manager*

KATHERINE PASCO *Center*
LOUISE FOWLER *Side Center*
GENEVIEVE KNIGHT *Forward*
CHARLOTTE HUNTER *Forward*
MARY LANIER *Forward*
HELEN RIDLEY *Guard*
LUCILLE BRIDGMAN *Guard*

Sophomore Basketball Team



MISSOURI WOOLFOLK, *Captain*
 MARTHA SHANKLIN, *Manager*

LYNN MOORE *Center*
 MARTHA SHANKLIN *Side Center*
 ELEANOR CASTLES } *Forwards*
 CAROLYN NASH }
 MARGARET ARMSTRONG }
 MISSOURI WOOLFOLK } *Guards*



MISSOURI WOOLFOLK, *Captain*

Freshman Basketball Team



JEAN GREY, *Captain*

JEAN GREY, *Captain-Manager*

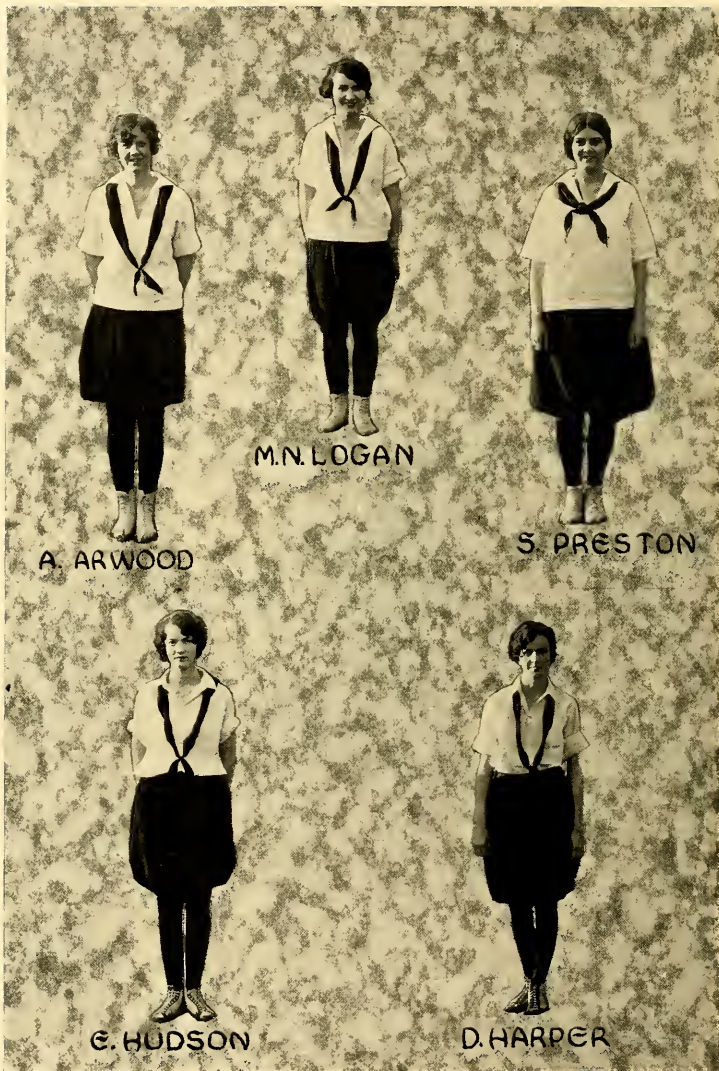
- CHOPIN HUDSON *Center*
- KITTY PURDIE *Side Center*
- MARY SPRINKLE *Forward*
- BETTY KNOX *Forward*
- MARTHA SPRINKLE *Guard*
- SARAH HILL *Guard*
- JEAN GREY *Guard*



Track

The SILHOUETTE

Varsity Track



A. ARWOOD

M.N. LOGAN

S. PRESTON

E. HUDSON

D. HARPER

Senior Team



DOROTHY HARPER, *Manager*

MIRIAM ANDERSON
VIRGINIA CARRIER
MARY CRENSHAW
ELIZABETH CRIER
FRANCES HARGIS
DOROTHY HARPER
ELIZABETH HUDSON
JOSEPHINE WALKER



DOROTHY HARPER, *Manager*

SILHOUETTE

Junior Team



DOROTHY HUTTON, *Manager*

DOROTHY HUTTON, *Manager*

LUCILLE BRIDGMAN
HELON BROWN
BERDIE FERGUSON
DOROTHY HUTTON
GERALDINE LEMAY
MARY NELSON LOGAN
LUCILLE SMITH
SARAH SOUTHERLAND

Sophomore Team



MISSOURI WOOLFOLK, *Manager*

WALTERETTE ARWOOD
RUTH BRADFORD
MARGARET CATRON
LYNN MOORE
SHANNON PRESTON
MARTHA SHANKLIN
PAULINE WILLOUGHBY
MISSOURI WOOLFORD



MISSOURI WOOLFOLK, *Manager*

Freshman Team



MARY SPRINKLE, *Manager*

MARY SPRINKLE, *Manager*

HELEN FRIEDMAN
MARY KATHERINE GAY
CHOPIN HUDSON
MILDRED McCALIP
KATHERINE MORROW
KATHERINE PURDIE
MARY SPRINKLE
VIRGINIA STOKES

Track Meet



Track Meet





Baseball

The SILHOUETTE

Varsity Baseball Team



1924

One Hundred and Ninety-six

Senior Team



ELIZABETH HUDSON, *Manager*

MARY MACKEY HOUGH, *Captain*

- VIRGINIA CARRIER *Catcher*
HILDA KALMON *Catcher*
VIRGINIA CARRIER *Pitcher*
MARY MACKEY HOUGH *First Base*
SARAH GLENN *Second Base*
GWENDOLYN MCKINNON *Third Base*
ELIZABETH HUDSON *Short Stop*
MARY CRENSHAW *Right Field*
MARY PERKINSON *Right Field*
FRANCES HARGIS *Center Field*



MARY MACKEY HOUGH, *Captain*

Junior Team



LOUISE FOWLER, *Captain*

RACHEL PAXON, *Manager*

LOUISE FOWLER, *Captain*

SARA FRANCES ANDERSON . . . *First Base*
HELEN RIDLEY *Second Base*
MARY LANIER *Third Base*
RUTH WORTH *Shortstop*
SARA JOHNSTON *Right Field*
MARY JANE BRADFORD . . . *Center Field*
ETHEL FREELAND *Left Field*

Sophomore Team



LETTY POPE, *Manager*

ELIZABETH FLINN, *Captain*

- MARGARET ARMSTRONG *Catcher*
- ELEANOR CASTLES *Pitcher*
- CAROLYN NASH *First Base*
- ALICE JERNIGAN *Secand Base*
- ELIZABETH FLINN *Third Base*
- MIRIAM KAUFMAN *Shortstop*
- AUGUSTA DUNBAR } *Right Field*
- CARRINGTON OWEN }
- WALTERETTE ARWOOD } *Center Field*
- LETTY POPE }
- MARTHA STACKHOUSE } *Left Field*
- SARAH TOWNSEND }



ELIZABETH FLINN, *Captain*

Freshman Team



KATHERINE PURDIE, *Captain*

KATHERINE PURDIE, *Manager*
 KATHERINE PURDIE, *Captain*

- JEAN GREY *Catcher*
- MILDRED McCALIP *Pitcher*
- JANE CLARK *First Base*
- MARTHA NORTH WATSON *Second Base*
- MARY BRYAN WEBB *Second Base*
- MARY CATHERINE GAY *Shortstop*
- KATHERINE PURDIE *Right Field*
- MIRIAM DANIELS *Center Field*
- JULIA THOMPSON *Center Field*
- ANITA BOSWELL *Left Field*
- LOUISA CHANDLER *Left Field*



Swimming



Water Polo

M. RICE, M. R. DOBYNS, C. OWEN, S. SOUTHERLAND,
S. HILL, A. JERNIGAN, M. R. SELMAN, K. PASCO.



Swimming

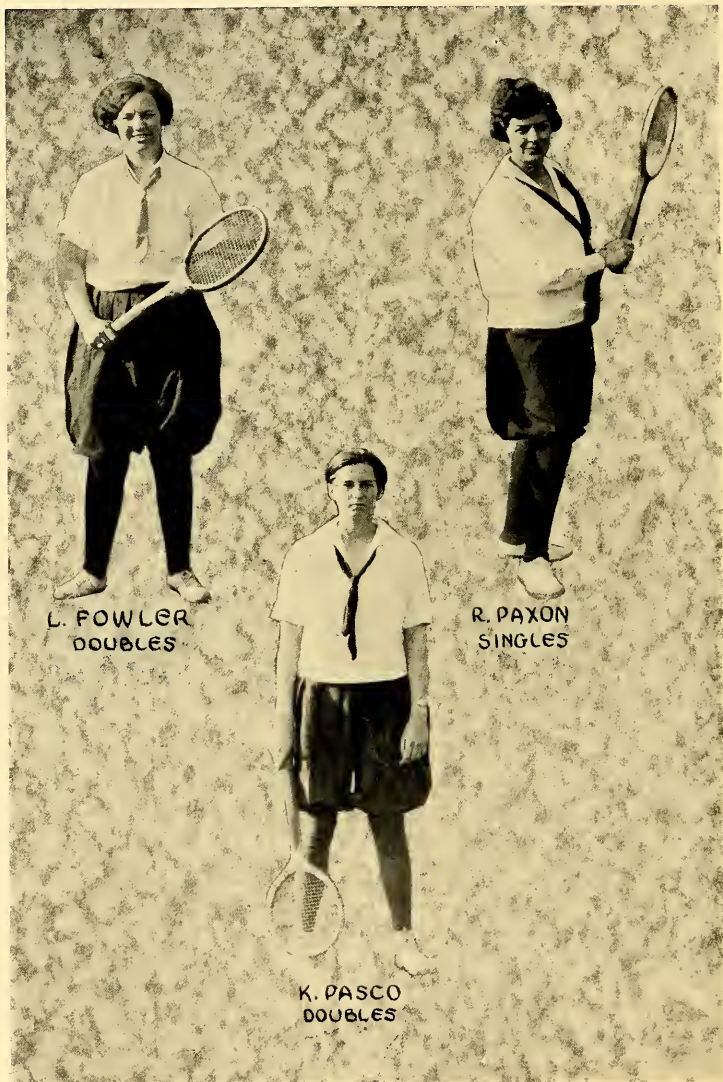
C. HUDSON, H. KALMON, K. PASCO,
M. R. SELMAN, S. SOUTHERLAND.



Tennis

The SILHOUETTE

Tennis Champions



L. FOWLER
DOUBLES

R. PAXON
SINGLES

K. PASCO
DOUBLES

Tennis Doubles



THE SILHOUETTE

Tennis Singles



V. CARRIER
SENIOR

R. PAXON
JUNIOR

C. NASH
SOPHOMORE

M. TOWER
FRESHMAN

THE SILHOUETTE



1938

Two Hundred and Seven

Wearers of A. S. C.

JACK ANDERSON: Basketball, class team (3); swimming, class team (3); baseball, class team and varsity (2).

MARGARET ARMSTRONG: Hockey, class team (1, 2); varsity (2); basketball (1, 2); baseball, class team and varsity (1); hiking (1).

VIRGINIA CARRIER: Hockey, class team (1, 3, 4), varsity (3, 4); baseball, class manager (2), school manager (3), class team (2, 3); basketball, class team (4); tennis, finals of doubles (4); secretary of A. A. (4).

ELEANOR CASTLES: Basketball, class team and varsity (1, 2); baseball, class team and varsity (1); freshman representative to A. A.

EUGENIA GOBERE: Hockey, class team (3); baseball, class team and varsity.

ELIZABETH GRIER: Hockey, class team (3, 4), varsity (4); basketball, class team (3, 4), manager (3); track, two first places and one third (3), school manager (4); tennis, class singles (3); hiking (1, 2, 3).

ELIZABETH HUDSON: Baseball, class team and varsity (2, 3); track, school record for baseball throw (3).

HILDA KALMON: Swimming, class team and varsity (2, 3), school manager (3); baseball, class team (3); basketball, class team (3).

KATHERINE KALMON: Swimming, class team and varsity (2, 3).

GENEVIEVE KNICHT: Hockey, class team (2, 3); basketball, class team (1, 2, 3), varsity (2, 3), school manager (3); treasurer of A. A. (3); hiking (1, 2).

GWENDOLYN McKINNON: Hockey, class team and varsity (1, 3); basketball, class team (2, 3, 4), varsity (3, 4); swimming, class team and varsity (2); hiking, school manager (2); base ball, class team (3); treasurer of A. A. (3).

CAROLYN NASH: Hockey, class team and varsity (1, 2), class manager (2); basketball, class team (1, 2), class manager (1), varsity (2); baseball, class team (1); tennis, class manager (1).

CARRINGTON OWEN: Hockey, class team and varsity (1, 2); swimming, class team (1); water polo, class team and varsity (2); baseball, class manager (1), school manager (2); hiking (1).

KATHERINE PASCO: Hockey, class team (3); basketball, class team (1, 2, 3), varsity (3); baseball, class team (1, 2); swimming, class team and varsity (1, 2); water polo, class team and varsity (3); tennis, singles champion (2), doubles champion (3).

MARGARET RICE: Basketball, class team (3, 4); baseball, class team (3); water polo, class team and varsity (4); tennis, singles, finals (1, 2), doubles, finals (4).

MARTHA RILEY: Hockey, class team (1, 3, 4), varsity (3, 4), class manager (4); baseball, class team (3); volley ball, class team (4).

SARA SOUTHERLAND: Hockey, class team (3); swimming, class team and varsity (1, 2), school manager (3); water polo, class team and varsity (3).

JOSEPHINE WALKER: Hockey, class team (1, 3, 4), varsity (4); class manager (3); track, third place in hurdling (3); hiking (1, 2).

RUTH WORTH: Hockey, class team (2, 3); baseball, class team and varsity (3); swimming, class team (3); hiking (1, 2), school manager (2).



FEATURES



THE FOLLOWING WERE CHOSEN AS THE EIGHT
MOST BEAUTIFUL GIRLS AT AGNES SCOTT BY

JAMES MONTGOMERY FLAGG

(FROM A GROUP OF PHOTOGRAPHS)

THE PICTURES ARE ARRANGED IN THE ORDER IN
WHICH HE CHOSE THEM

THE EDITOR,
Bayliss McShane.



LILLIAN LECONTE



MARY BELL McCONKEY



HELEN JOHNSON



HAZEL WOFLE



LOUISE SYDNOR



ELIZABETH BENNETT

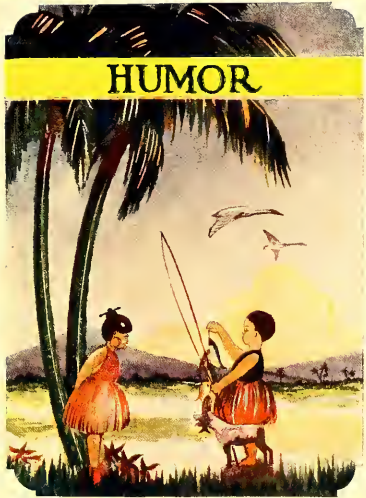


ELIZABETH MURPHY



ELIZABETH REID

HUMOR



The Antagonistic

WHO-ASKED-US ELECTS NEW MEMBERS

FLAMES MONTGOMERY JAGG SELECTS BEAUTY QUEENS

Mr. Flames Montgomery Jagg, the famous illustrator for *I Deny* and *Untrue Story*, sent a special request to the editor of our annual asking that he be allowed the privilege of using his inartistic disability in selecting our ravingly, gorgeously beautiful girls who will disfigure our 1928 Sell-Who-Yet. Our kind-hearted editor says, "I don't care if you do." And with that sent the old bird a batch of photos—one hundred strong, and many weak (very weak). Ole man Jagg looks over the lot and picks out as our chief beaut Miss Take. The others who had "it" for our artist friend were Ima Beaut, Ura Nub, Iona Fifer, Ainche Knock-need, Ima Nuband, others that we dare not mention here.

FINE GALS PICKED

The famous organization of Who-Asked-Us (we wonder too) is composed of those good ole girls who for some reason or another have been elected. They have all done something or are something that makes them prominent gals on the campus and then they get their names read out in chapel and put in the paper and then they pay five dollars for a pin. This fine ole southern custom was established a good while ago when some of the patriotic Hottentots realized the Alma Mater sure did need help so they got together all the big dogs who would all pitch in and lend a hand. And ever since then Who-Asked-Us has at different times pinned the pledge button on a favored few.

Now that we have kept you in suspense that long, we'll tell you who has just been elected and why:

Mary McCallie and Augusta Dunbar were read out first and foremost because of their heartfelt interest in student government and their regular attendance at the executive meetings.

Helen Fox was next mentioned be-

cause of her love for her Alma Mater and her abundant amount of school spirit.

Hortense Elton gained her election by the wearing of her lovely campus models suggested by the gym department and purchased at the French Shop.

Next, Alice McDonald because of her soft, sweet and melodious voice.

Elizabeth Tyson could not be left out because she is an adherent to the fine old custom of attending chapel regularly.

Dade Warfield, our new Y. W. president, received her appointment also.

Carolyn Payne because of her inexhaustible supply of ATO jewelry.

Lois McClelland because of her super supply of undefinable quality, so much advertised by Elinor Glyn.

Belle Ward Stowe because she's from C-H-A-R-L-O-T-T-E.

Betty Reid attained prominence by receiving flowers daily and she deserved honor because she constantly represents Agnes Scott in Atlanta.

Last but not least Lillian LeConte was elected because of her athletic ability and her interest in gym.

STEWED GOVERNMENT GOES ON CAMPAIGN

In the Executive Committee meeting last Monday it was decided that there was entirely too much noise going on in the halls after lights and that steps (no, not foot-steps) must be taken to bring about a little more quiet. The only means by which this unruly condition may be controlled, it was decided, is for each member of the committee to begin a "shooing" campaign. They decided there was nothing so quieting, so awe-inspiring, so befitting of the dignity of ole "exzy" as a long wined mighty sh-h-h-ish. This suggestion was enthusiastically received and it was decided that classes should be organized so that all members and proctors could become proficient in the art. Yea, truly, soon they will be rivals of both the Ga. Railroad and the Atlanta Street sprinklers.

The Antagonistic

Published spasmodically at the institute

Ima Real Nutt	Creditor-In-Chief
Ima R. Nutt	Asst. Creditor
Ima Nutt	Sassity Creditor
I. R. Nutt	Athletic Creditor
Enna Hole	Business Mismanager

Deported in this Issue

I. M. Nutty

IDIATORIAL

The Fillaboo bird lives in southern most Yucatan. He flits from Banyan tree to Banyan tree shouting "Voqua." All of which reminds us (idiatorially speaking) —no, not of Paul Riviere or Little Nell but of a certain item that came to our notice the other day in person of an intelligence test—a companionate piece to the Ivory Soap test. It was as follows: What followers? The intelligence test of course.

1. How many men were there on the dead man's chest? Answer yes or no and if so why not.

2. Why didn't he object to them sitting on his lungs? Answer in detail giving size of gloves, sox, etc.

3. Was the man dead? How do you know? Answer how many.

4. How old are you? (Optional). Answer why.

Take these home and try them on your Victrola. If you are able to go back

to work or school, if you have scored 100 plus on the test and if you can answer three of these questions (right or wrong) and if you have paid your budget you are eligible for Who-Asked-Us. Speaking of the budget, you have no ideah how many people failed to pay theirs last year. In fact there were 1,234. Think of it! There were 1,234 people who enjoyed the privileges that the budget allowed them so much that they died before they could be jacked up about giving phoney checks. But one gal, Hannah May Die, sent us a testimonial of a notary public that she still lives after enjoying all the privileges. Doctors marveled. Music Directors wanted to sign her up. One vanishing cream company offered her millions for her signature on their commodity—but could she use a million jars of the stuff. Aggie herself offered her a Phi Beta Kappa key. Moral: Do not smoke in the dormatories.

PHI DELTA THETA HOUSE PARTY

One of the most enjoyable events of the year was the Phi Delta Theta house party at the University of Georgia. A great many Agnes Scott girls attended, chaperoned by Miss Hopkins. A good time was had by all.

ANNUAL DANCE AFFAIR

The gymnasium was the scene of a delightful and elaborate dance last Friday (the 13th) night. This dance was the traditional annual Junior Prom. It is always one of the most delightful events of the school year and always brings a large representation from Tech, Emory, Georgia, Vanderbilt and other schools. Music was furnished by Paul Whiteman's and Weidmeyer's famous orchestras. Delicious refreshments of tea and cakes were served throughout the evening. Dancing continued till three o'clock.

RED-HEADED CLUB DISBANDED

The Red-Headed Club has disbanded. At the last meeting they decided it would be impossible to function in opposition to Golden Glint and Marchand's Golden Hair Wash.

GIDDY GOSSIP

Giddy, Love:

This school is really living up to its name of Alma Mater—the sweetest interest everybody is taking in our dates. But since Emory has made the horrible discovery that more boys write to Wesleyan girls than to Agnes Scott girls, it is absolutely imperative that we do something rash. Janet's mastermind solved the problem—Coffee! It keeps the boys awake and gives them a chance to look over the other girls. For of course it would be impossible for us all to go to Professor Fields. And besides, how could some of us girls ever meet people like Therese's Red or Carolyn Payne's Fleming any other way? Constancy like theirs is such a virtue. If I could just go somewhere like West Point, Giddy, I might meet my ideal man, too—one of those like Virginia Stokes has, who doesn't realize you have gotten six of his classmates' pins, too. It must be as hard for her to make up her mind as Belle Wörde (who is not "emotional," she just has hay-fever). Poor Belle can't decide whether Ronald Coleman or John Gilbert is more ideal.

OH, and darling, they're forming a new club to give

JOKES FROM A THOUSAND CITIES

"Who was that lady I seen you with last night?"
"That wasn't no lady. That was my wife."

Once there was a Scotchman who wouldn't send his children to school because he heard they had to pay attention.

Where there is smoke there must be a flapper.

She was only an electrician's daughter, but she gave me an awful shock.

us girls that didn't get Who - Asked - Us bids a chance to have something under our names in the annual. It's an honorary club for girls who raise the percent. You know the percent, sugar, of Agnes Scott girls that get married.

They really need another good sorority like that anyways. So many of the freshmen are interested in joining. Dit Quarles was asking Sara Townsend about it last night. "Of course there are different ways," Sara informed her, "but I served in the dining room and put up mail." Dit's going to help dig arounds, the faculty flow-ers. That's a good way to get a Charley horse and be eligible for the Athletic association too, and "anything Charley is Sweet," sighs

ATHLETIC NEWS

The basketball season was one of the most successful in the history of the school. Out of all the applicants for the team there were many forward girls who were specially fitted for their positions. Some played side center, but most were self-centered, although a few were on there guard. There was no foul play. All teams played well and it was a toss-up as to which team won the championship. Our one regret is that Dr. Hayes did not make the team because he could not pass 'em. But all in all the school has almost attained the goal in basketball. Ask Miss Randolph—she'll give the girls their weight.

Helen Anderson. The flying squadron is also a good substitute for grade B exercise. But don't let them tell you that health is more important than romance, Giddy dear. Marmola is fine for the figure, and by all means take yeast—then you can get your picture in the Ladies Home Journal—a fine advertisement, and we all know it pays to advertise. So with proper efforts we may yet realize the answer to a maiden's prayer. Speaking of which reminds me I must go look at the phone pad—Hemlock 4017 is a set of such manly figures!

Hopefully,
Aggie.

THE ANTAGONISTIC

WE THINK

**HOOEY'S
DRUG
STORE**

*Hair Tonic
a Specialty*

AGNES SCOTT COLLEGE
DECATUR, GEORGIA

SPACIOUS AND BEAUTIFUL GROUNDS
ELEGANT BUILDINGS WITH MODERN
CONVENIENCES

FULL AND ABLE FACULTY
COURSES LEADING TO A.B. DEGREE
BEST ADVANTAGES IN MUSIC AND ART

**WATCH
THIS
SPACE**

See If It Moves

LOW VAUDEVILLE
GRAND AND LOW

KOLLEGIATE KIDDIES!

The stately walls of Prothalamion Hall echoed last night with the stirring words of two mortally opposed forces. The Student Body was ranged against the combined power of Exec and Faculty in a discussion of a question that has moved the college community like a cyclone for the past month: "Resolved, we are not children."

"Exec" and the faculty took the floor together, but their points were so weak they were soon compelled to sit down. Their argument was:

1. Only growing children could eat onions and liver for breakfast and live to tell the tale.
2. Little children are always being in weddings or having their teeth pulled; so are Agnes Scott girls.
3. They cry when they come to Exec.
4. Richard Halliburton, straight from an interview with marble maidens two thousand years old called them children.

This they thought was conclusive, but the Student Body, that august assembly, waved them aside and arose.

First: Children could not stand up under the gym we take. As proof, consider Mr. Longfellow's poem: "Children, you very little and your bones are very brittle." (Applause from faculty at manifestation of esthetic spirit).

Second: We drink the faculty's tea and do not stay awake at night.

Third: We read and appreciate College Humor.

Fourth: We understand the jokes in the Yellow Jacket and Buccaneer.

Fifth: Emory and Tech students are called "men" and they do not come out here because they like to play with children.

"And in closing," severely remarked the Body, "if you still think we are children, we should have a little more time to play."

But the opponents of the great cause were humbly admitting defeat, and amid tears and pleas for forgiveness, slunk out of the back door.



Diagram of a Freshman going through the mental process of answering "yes"—to a true-false test.

Frosh calling a bluff: "Here cliff, here cliff."

"How do you like spinach?"
"In the garden."

Better pay the check in nickels.
Why?
Barto looks so sick I think the change would do her good.

History Prof (during lecture): "Babylon fell, Ninevah was destroyed, and—
Voice: "Tyre was punctured."

"Guess what Mr. Robinson said about you the other day?"

"I haven't the least idea."

"Oh, so he told you, too?"



Lines Busy



"Does she draw the line anywhere?"

"Yes—with a lipstick."

The college girl likes to see a movie of college life—it's all so new to her.

"Bill got arrested."

"What for?"

"Driving in a state of extreme infatuation."

ARMS OF MORPHEUS

They were discussing the nature of love. "To me love is peace, quiet, tranquility," said she. "That's not love," said he, "that's sleep."

Tommy caught a cold one day;
He up and died,
Was laid away—
Tommy rot!

When a man sees red, he's dangerous;
when a woman sees red, she has to have
one like it.

Fair One (after reading halitosis ad):
"I wonder why I'm not more popular
with the fellows, I haven't got it."

Kid Brother: "That's just the right
answer."



Teacher: "Who can tell me what this sign means?"

Tiny Tot Class of 31: "I know. It marks the spot where the body was found."



See our dear little Dora in her lovely new \$150 bathing suit—all frills and as crisp as frosted meringue. She is just ready to step lightly into the sapphire sea.

The first thing that strikes a stranger in New York is a big automobile.

“Who’s that lady I seen you with?”

“Why! Your grammar!”

“Couldn’t of been—she’s been dead six years.”



Alas! the treachery of taffeta—the fraudulence of frills. Bestow a tear on poor Dora. Undone by Neptune’s brief embrace, she falters forth wondering whether her chic model will make a good parlor dust-cloth or anything.

Freshmen will find that liniment applied to the head will make them smart.

“You’re a poet and don’t know it, your feet show it; they’re Longfellows.”

“Say, you’re getting Whittier and Whittier.”

The SILHOUETTE

SONGS:

Smoking Song: Inhale, Inhale, the gang's all here.

Poker Playing Song: I'm waiting for chips that never come in.

Pre-Dinner Bathing Chorus: Muddy Water.

A Toast: To our parents and profs
—may they never meet.

"Dirt?—Why there's all kinds of dirt
in this book."

"Lemme read it next. What's the
name?"

"Practical Geology."

Joe: I call her my Mohammedan
girl.

Herb: Mohammedan?

Joe: Yeh, I Mecca do this, and I
Mecca do that.

Field Worker in Sociology 103: But
have you no religious convictions, my
good man?

Convict: Yes mem, I wuz caught
breaking into a church collection box.

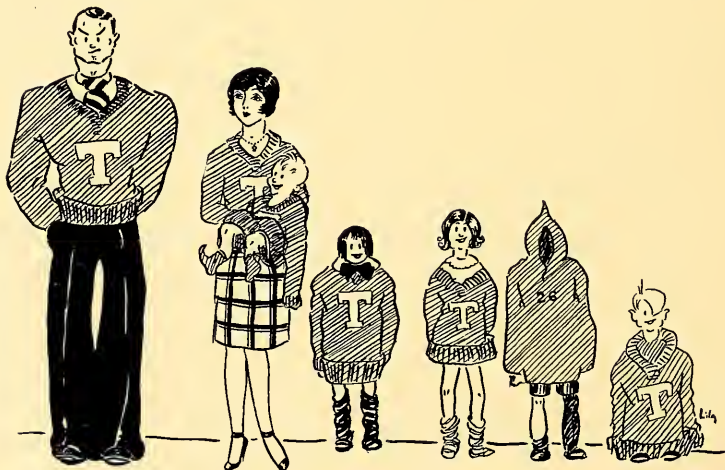
Girl: (to youth tearing off calendar)
"What are you doing?"

Boy: "I'm passing away time."

A: I went to the Milkmen's matinee.

B: What do you mean milkmen's
matinee?

A: Why, the Howard midnight
show!



Economic hint: When married, the triple sport man finds practical uses for
his awards.



Gold diggers Version: Nobody loves a flat man.

Those two girls seem to be very close friends.
Yes, there is a compact between them.

"My folks are going to send me to Agnes Scott."
"Mine can't manage me either."

Jean purchased eight Valentine cards bearing the sentiment, "To the only boy I ever loved."

Drunk (to a man in hotel lobby):
"Shay, did you shee me come in?"
"Yes."
"Do you know who I am?"
"No."
"Then howsh you know it wash me?"

"I hate dumb women."
"Aha—a woman hater!"

Collegiate: Do you like fish balls?
Frosh: I don't know, I never went
to any.



Hey, Hey, Charleston!
"You're not in class to-day?"
"No—I've got a bad knee."

SILHOUETTE



Teacher: If a number of cattle is called a herd and a number of sheep a flock, what would a number of camels be called?

Bayliss: A carton.

A banana peel,
A flash of hose,
A little squeal,
And down she goes.

Tabby: Shall I take this little rug out and beat it?

Zoo: That's no rug, that's Bib's towel.

Gosh! Let me make my will!

1st Prof: Ah, Ninnemoosha, how do you find your classes this year.

2nd Prof: Now, now, Cheermanedo, I walk over to University hall, and there they are.

Well, Tyson, how did you come out in the races today?

I'd have won, only Pasco got in front of me.

Did you see that real good looking fellow on the Emory campus who wears a derby?

No.

Neither did I.

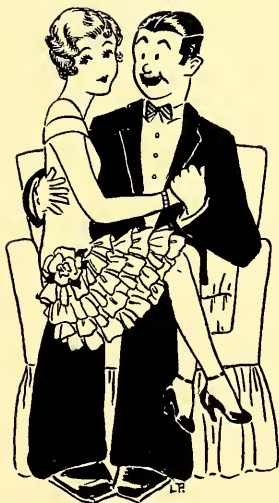


"I like your nerve using my stationery."

"Well, you see, old gal, I'm writing to your boy friend."

"I'm wearing my room-mate's patent leathers."
"What for?"
"The patent on mine expired."

Gosh, she has an awful line."
Yeh?
Why, I've been trying to get her on the phone for
hours.



If at first you don't succeed try
try again, but not the same girl.



100% Proof

"What makes you so certain you
can't afford to send your daughter to
college?"
"I'm sending her."

"When better dates are made, they
won't be blind."
"Ask the man who phones one."

Hear no evil, see no evil, speak no evil and the wise ones will make a monkey of you at a bull session.

Dumb: And the father?

Belle: Why, he's a big wool man.

Dumb: And the daughter?

Belle: Why, she's a little knit-wit!

Mary Ray, our organist, is getting so childish she plays with her feet.



LILA AND SALLY:

If you don't like our section, just give us credit for not using any SCOTCHMAN JOKES.

PAT AND MIKES.

SHE WAS JUST A SO-AND-SO'S DAUGHTER, ETC.

WALK HOME JOKES.

LON CHANEY JOKES.

Verily, verily, like history, humor oft repeats itself!

Moral and Warning: Forbear to copy these jokes; you can find better ones where these came from.

A bedtime story—GOOD NIGHT!

ADVERTISEMENTS



In Appreciation

Of my efficient staff whose untiring work made it possible to carry out my plans: Of Ben Franklin Press, especially Mr. Theodore Smith, and of Wrigley Engraving Company, especially Mr. William Wrigley and Mr. C. B. Dryden, and of Mr. Elliott who made the photographs, whose active co-operation helped to make the planning and production of the book a pleasure; Of our advertisers whose assistance to a great measure determined the financial success of *The Silhouette*.

—BAYLISS McSHANE.



KING HARDWARE COMPANY

Headquarters for Sporting Goods in the South

Dainty Lingerie



*We Will Consider
It a Joyous Privilege
to Supply Your
Needs in
Most Charming*

Undergarments
Gowns, Teds
Step-Ins, Bloomers
Dance Sets, etc.

Tailored or Lace Trimmed

J. M. HIGH Co.

Whitehall-Hunter Streets



Se-fly-go

KILLS INSECT PESTS

For Sale at All Good Stores

50c—75c—\$1.25—\$3.50 Sizes. Sprays, 50c.
Special Combinations, \$1.00 each

Made by
THE SELIG COMPANY, ATLANTA

Teacher: Tommie, what is a relief map?

Tommie: A woman who has just had her face lifted.

IRENE HAT SHOP

HATS AND DRESSES FOR
THE COLLEGE GIRL

MASONIC BUILDING DECATUR, GEORGIA

See Us for New Spring Line of
HATS, SHOES, DRESSES, PIECE GOODS
AND UNDERWEAR

THANKS

DECATUR DRY GOODS CO.

DECATUR, GEORGIA

Phone DEarborn 1967

DEVOTED TO BETTER
EYESIGHT SINCE 1870

Examinations of the eyes
are made by our registered
optometrists, using only
the most modern methods.
Our facilities for supply-
ing anything optical are
unsurpassed.

A. K. HAWKES CO.

EST. 1870

67 WHITEHALL ST., S. W.
ATLANTA, GA.

OPTOMETRISTS AND OPTICIANS



J. S. McCAULEY CO.
INCORPORATED

General Contractors

ATLANTA, GA.

A stylized illustration of a potted plant. The plant has a central stem with several leaves and four large, five-petaled flowers. Each flower is replaced by a different style of women's high-heeled shoe. The shoes include a classic pump, a strappy high-heeled shoe, a pointed-toe pump, and a strappy high-heeled shoe with a different design. The plant is in a simple, rounded pot with a decorative pattern.

Footwear for
all occasions

BYCK'S
61-63 Whitehall

ASK FOR

DR. HALL'S \$6.00 SHOE
ARCH PROTECTOR

VISIBLY STYLED
WITH COMFORT CONCEALED

Made by
J. K. ORR SHOE CO.

Prompt Service

Correct Prices

DUNLOP'S POINT LACE
Best, and Bride Rose Flour

Also a full line of
high grade
Canned Fruits and Vegetables

Albright-England Co.

WHOLESALE GROCERS

No. 1 Washington St. Viaduct

SEND IT TO THE LAUNDRY
Decatur Laundry and Dry Cleaning Co.

QUICK SERVICE

REASONABLE PRICES

DEarborn 3162

Decatur, Ga.

Lou Robertson: Sallie, have you read "Little Women?"

Sallie Cothran: No, I believe not.

Lou: Have you read "Little Men?"

Sallie: No.

Lou: Well, have you read "The Last of the Mohicans," or "Uncle Tom's Cabin?"

Sallie: No.

Lou: Then for goodness sakes, what have you read?

Sallie: I have red flannels.

L. CHAJAGE

Dixie's Leading Furrier

220 PEACHTREE ST.

Expert Remodeling

Cold Storage

Louise Sherfesee says: I always have

Black and White Cabs

take me to catch the last train for Riverside. It's such a relief to know that my evening dresses will arrive on time, because the

Atlanta Baggage and Cab Co. takes care of everything.



Once there was a Scotchman who wouldn't send his children to school because they had to pay attention.

Silvers & Woods

JEWELERS

308-309-310 Connally Building
Corner Whitehall and Alabama Streets

Atlanta, Georgia

Edwards & Sayward

ARCHITECTS

ATLANTA, GEORGIA

Come to
“ STARNES ”

Soda Candies Cigars News

HOTEL CANDLER
142 Ponce de Leon Avenue
DECATUR, GEORGIA
Phone DEarborn 2169

“Service With a Smile”

Listen to Willie playing on the piano.

Don't you think you ought to make him take his shoes off?

HEWEYS DRUG STORE

315 EAST COLLEGE STREET

“Little Dec”

*Welcomes Old and New
Agnes Scott Girls*

SERVICE DAY AND NIGHT

Phone DEarborn 0640

Phone DEarborn 9110

The Home of Good Eats

SCOFIELD GROCERY CO.

Delicatessen and Tea Room

131 SYCAMORE STREET

Phone DEarborn 3521-22-23



Always
The Most Exquisite
Footwear for
The Younger Set



LEON FROHSIN

Atlanta's
Master of the
Mode

GOWNS — FROCKS — COATS
MILLINERY — ACCESSORIES

LEON FROHSIN

In the new shopping district.
225 - 227 PEACHTREE

Virginia Cameron: I've spent the entire day trying to get ads and received only two orders.

Lillian LeConte: Too bad, who gave those?

Virginia: Everyone—"Get out and stay out."



Anderson & Hudson YE BEAUTY SHOPPE

*Chopin' and Curlin' Hair
a Specialty*

In the new chopin' district.
FOURTH FLOOR MAIN



THE
S. A. CLAYTON
COMPANY

Home of Permanent Waving

Also Specializing In
FINGER-WAVING
MARCELLING
FACIAL AND
SCALP TREATMENT

Phone WALnut 7289-7290
113-115 Hunter Street, S. W.

JACOBS' PHARMACY CO.

Stores All Over Atlanta

AGENTS FOR ELIZABETH ARDEN TOILETRIES

THE
DECATUR WOMAN'S
EXCHANGE

FLOWERS—GIFTS—HOSE
PARTY ORDERS

DEKALB THEATRE BUILDING
DEarborn 3343

RANDOLPH & RANDOLPH

See Us About Your I. G. Training!

*We Are Staunch Advocates of
Summer School Courses!*

Permanent Waving By Seven Men Experts!

BOOKHAMMER'S
HAIRDRESSING PARLORS

78½ WHITEHALL

BILTMORE HOTEL

PONCE DE LEON APTS

MRS. W. J. FLYNN

MARBUT-WILLIAMS LUMBER CO.

DEALERS IN

LUMBER—MILLWORK

LIME—CEMENT—PLASTER

BUILDER'S HARDWARE

PAINTS—ROOFING

GREEN & MILAM

PRODUCE ROW

Wholesale Dealers in

Fruits, Vegetables, Poultry and Eggs

F. K. GOOCH

Active Coach in

Cheer-Leading

Gymnastics Given With
Each Lesson

95 WHITEHALL ST., S. W.

**ALL AMERICA
SHOE STORES**

Atlanta - Birmingham - Nashville

DIAMONDS

HENRY MUENCH

63 Peachtree Street, N. E.

ATLANTA, GEORGIA

Compliments of
ELLIS MILLINERY

32 WHITEHALL STREET
ATLANTA, GA.

The Smartest Fashions
for the
Petite College Girl

Suits, Coats, Dresses
Millinery and Accessories

"The New Things First"

THE MIRROR

Reflects Greater Values

76 WHITEHALL

Usual charge courtesies extended.

FOR SUPERFINE MATERIALS, STYLE, AND
SERVICE VIEW OUR INDIVIDUALLY
SELECTED FROCKS, COATS, ENSEMBLES

Erlich's
LADIES' READY-TO-WEAR
4 PEACHTREE (ARCADE BLDG)

Our Prices Are Moderate

Don't embarrass your date by taking him to the dining room.
He had rather be serenaded under the stars.
As for giving him a toast—we can supply that and coffee too.

SILHOUETTE TEA ROOM



FURNITURE OF CHARACTER

For the Expression of Your Own
Individual Good Taste in the Home

DUFFEE-FREEMAN

CORNER BROAD AND HUNTER



You'll Like

Nunnally's
THE CANDY OF THE SOUTH

"The Best Taste In Gifts"

PLANTER'S
SALTED
PEANUTS



Sold Everywhere

Phones: DEarborn 0762, 0763

Lawrence's Pharmacy

Your Doctor's Choice

309 COLLEGE AVE., OPP. DEPOT
DECATUR, GA.

WE APPRECIATE YOUR PATRONAGE

You can always tell an Agnes
Scott Girl—but you can't tell
her much!

BUY YOUR ATHLETIC GOODS,
STATIONERY,
PENNANTS

from

AGNES SCOTT COLLEGE
BOOK STORE

VERA
BEAUTY SHOPPE

MASONIC TEMPLE BUILDING
DECATUR, GA.



To the Graduate:

We extend our best wishes and congratulations. We trust you will have the realization of your most cherished hopes.

To commemorate this day a gift you can keep throughout your life is fitting.

□

NAT KAISER & CO. INC.

3 Peachtree St.

JEWELERS

Approved Accounts Solicited

ATLANTIC ICE & COAL COMPANY

Ice, Coal and Cold Storage



ATLANTA

Phone MAin 1900

DECATUR

Phone DEarborn 0096

"There Is No Substitute For Ice"

WHERE QUALITY IS HIGHER THAN PRICE

STEINWAY

THE INSTRUMENT OF THE IMMORTALS

PHILLIPS & CREW

PIANO COMPANY

Established 1865

E. DEXTER

Have you had your youngsters

I. Q. Taken?

Don't Wait 'Till Too Late!

Normal Prices

J. C. DUGGAN

Optometrist and Optician

221 MITCHELL STREET, S. W.

Phone WAlnut 9985

ATLANTA, GA.

Make Your Ankles Beautiful



-CHIFFONS-

POINTED HEELS FANCY HEELS
SQUARE HEELS VAMP HEELS

SIZES 8 THRU 10½
42 COLORS

THE HOSIERY SHOPPE
ARCADE ENTRANCE
BLANCHE MARIE SHOPPE
GRAND BLDG.
H. G. LEWIS CO.



New York Waist House

60 WHITEHALL STREET

ATLANTA, GA.

DRESSES

At New York Waist House the array of beautiful Dresses, Suits and Coats, moderately priced, makes possible the possession of a complete Spring Wardrobe at a cost surprisingly low.

HOSIERY

New Spring shades of Fan Tan hose in chiffons of filmy, yet sturdy quality, to complete the harmony of the costume.

LINGERIE

Every woman's delight is this glorious array of filmy, lacy, fascinating underthings which show price savings which can only be achieved because we are the largest underwear retailers in the entire country.

DECATUR BANK & TRUST CO.

COMMERCIAL BANKING
and
TRUST DEPARTMENT

We Issue Travelers Cheques



4% INTEREST PAID ON SAVINGS DEPOSITS, COMPOUNDED SEMI-ANNUALLY

HERFF-JONES CO.

INDIANAPOLIS, IND.



Official Jewelers

for

AGNES SCOTT
SENIOR RINGS



We Also Make Special

RINGS PINS EMBLEMS INVITATIONS
CARDS FOR COLLEGE & HIGH SCHOOL



H. S. CANFIELD

Representative

Best Wishes
for 1928
Annual
from a
Friend



BALLARD'S

Two Exclusive Optical Stores

Will fill your oculist prescription 100% correct, of the finest material obtainable and in the latest styles.

Ask about the new Tillyer corrected curve lens!

WALTER BALLARD OPTICAL CO.
TWO STORES

105 PEACHTREE ST. | MEDICAL ARTS BLDG.
CLOCK SIGN | 382 PEACHTREE ST.
ATLANTA, GA.

Poor Freshman Jinnie-Shug: When asked if she liked ice-hockey she said she had never drunk any.

Phone WALnut 5776

New Orthophonic
Victrolas and R.C.A. Radiolas

BAME'S, Inc.
VICTOR and COLUMBIA
RECORDS

107 PEACHTREE STREET
OPPOSITE PIEDMONT HOTEL

Dobbs & Wey Company
INCORPORATED

IMPORTERS AND DEALERS

China, Glassware and Art Goods

ATLANTA

GEORGIA

A pure drink of
natural flavors



That's Coca-Cola—a pure drink of natural flavors—with that taste-good feeling and delightful after-sense of refreshment.

Drink it at your favorite refreshment stand—at the "red sign" around the corner from anywhere.

The Coca-Cola Company, Atlanta, Ga.

Over 7 million a day

IT HAD TO BE GOOD TO GET WHERE IT IS

PHOTOGRAPHERS

To *Agnes Scott College*

ELLIOTT'S Peachtree Studio

PHOTOGRAPHS
Live Forever

211 HOWARD THEATRE BLDG.

ATLANTA, GEORGIA



H. G. LEWIS & CO.
Where price and quality are always right.



AIDE de STAFF

**DESIGNERS
ARTISTS
ENGRAVERS**

EACH DEPARTMENT TOPPED
BY A SPECIALIST



FACULTY MEMBERS, STAFF
OFFICERS AND STUDENTS ARE
INVITED TO VISIT OUR *STUDIO*
& *PLANT*

WRIGLEY
COLLEGE ANNUAL ENGRAVERS
A T L A N T A

ESTABLISHED BEFORE THE SPANISH AMERICAN WAR



*f*or superior service
in the production
of fine printing
Phone Ivy 5616

ANNUALS * CATALOGS
PAMPHLETS * BROCHURES
LEAFLETS * PUBLICATIONS
COMMERCIAL PRINTING

Ben Franklin Press

Successors to
The BLOSSER-WILLIAMS COMPANY
and the printing department of
JOHNSON-DALLIS COMPANY
128-142 Marietta St. Atlanta, Georgia



AGNES SCOTT COLLEGE

DECATUR, GEORGIA

A College For Women



