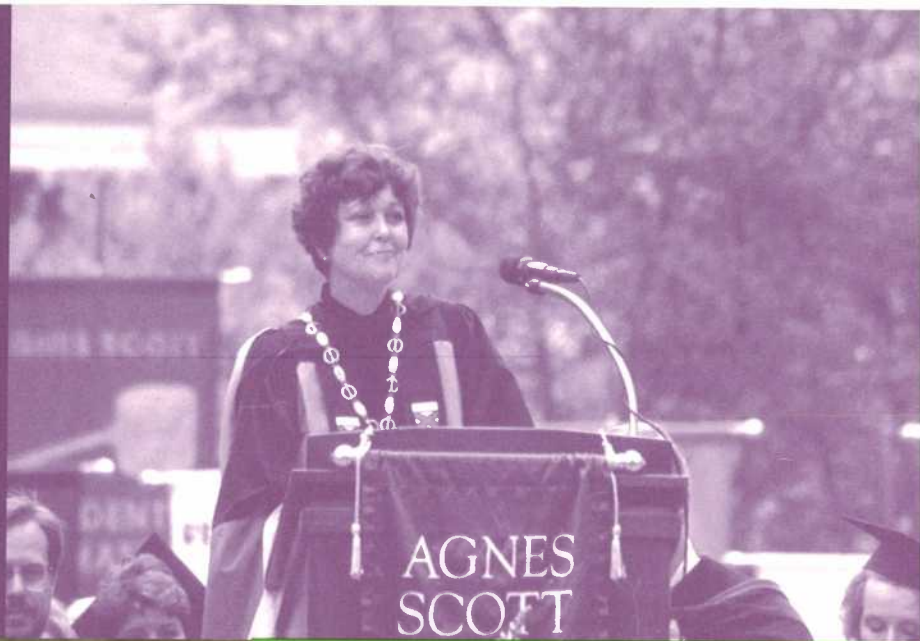
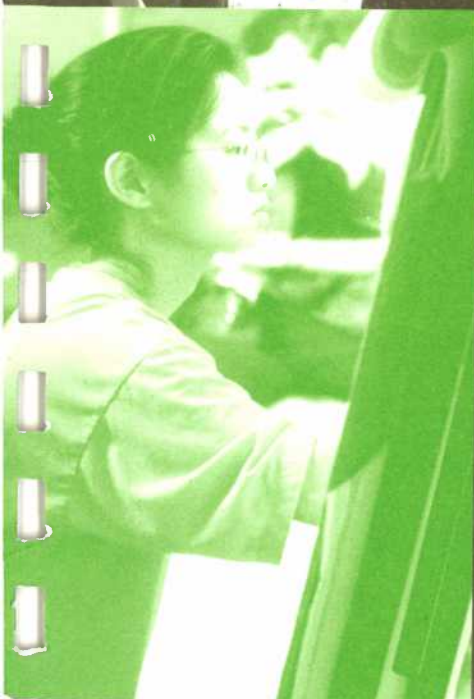
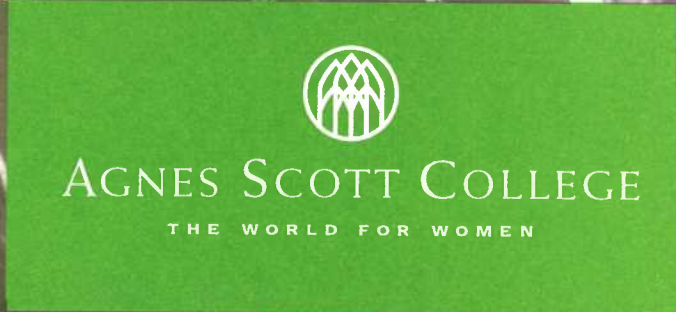
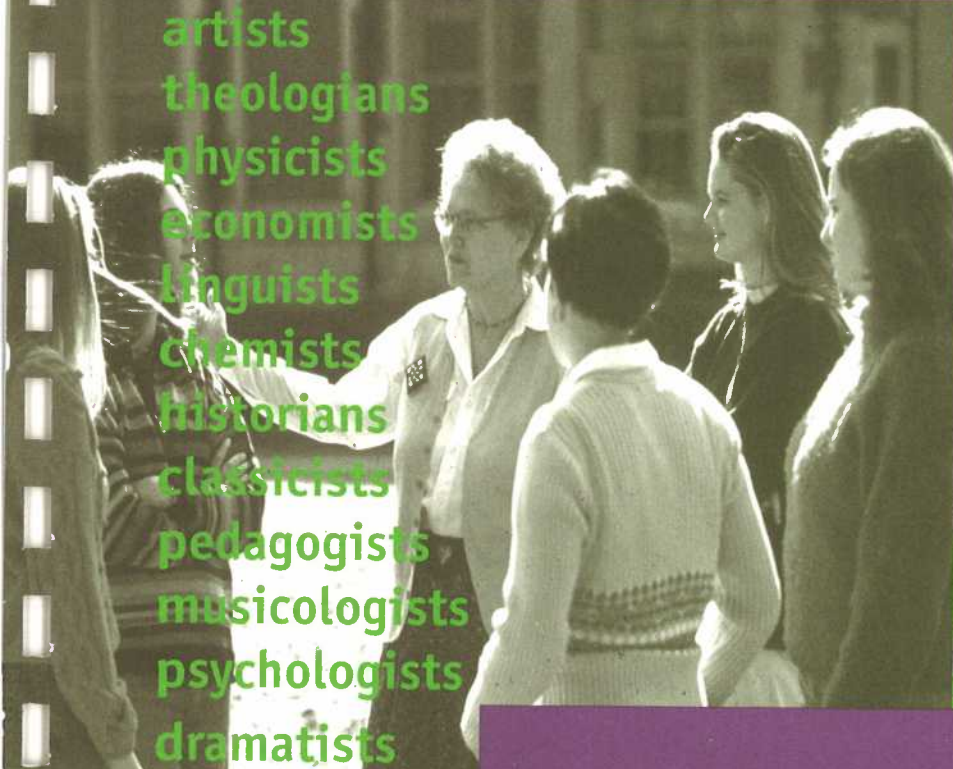


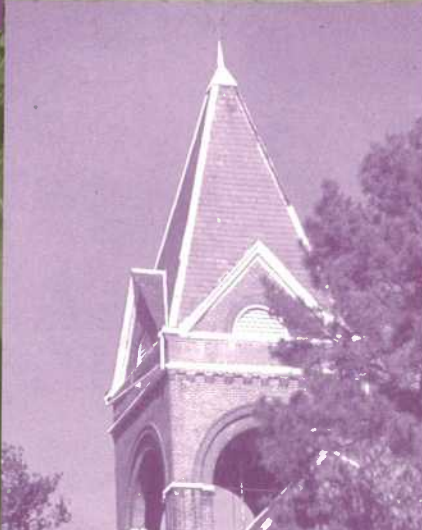
mathematicians
biologists
political scientists
astrophysicists
film critics
sociologists
anthropologists
philosophers
authors



artists
theologians
physicists
economists
linguists
chemists
historians
classicists
pedagogists
musicologists
psychologists
dramatists



SOURCE GUIDE





AGNES SCOTT COLLEGE
THE WORLD FOR WOMEN

Office of Public Relations

Agnes Scott College 1999 Source Guide

To contact the sources listed in the guide,
please call Dolly Purvis, manager of news services,
at (404) 471-5451 or contact her by e-mail at dpurvis@agnesscott.edu.

Agnes Scott College is a highly selective, independent national liberal arts college for women located in metropolitan Atlanta. In offering the world for women, Agnes Scott's curriculum encourages students to become fluent across disciplines, across continents and across centuries. Founded in 1889 by Presbyterians, Agnes Scott is a diverse and growing residential community with one of the largest endowments per student of any U.S. college or university.

Agnes Scott College 1999 Source Guide

Accounting

Jill Hazelbauer-Von der Ohe

Visiting Assistant Professor of Economics

Hazelbauer-Von der Ohe is a CPA (Certified Public Accountant), CMA (Certified Management Accountant), CFM (Certified in Financial Management) and CVA (Certified Valuation Analyst). In the past 14 months, she has worked in Uganda with the Cooperative Bank training managers in the budgeting process, and in Poland working with a company on cost allocation and lecturing on financial analysis and budgeting. Both projects were done on a volunteer basis. She is also actively involved in valuing closely held businesses.

B.A.	Knox College
Accounting Certificate	University of Wisconsin
M.B.A.	Rockford College

Africa

Christian Evangelism, Development

Penelope Campbell

Charles A. Dana Professor of History

Campbell is a historian of Sub-Saharan Africa, India, and Southeast Asia. She looks at politics and international tensions. She also studies environmental degradation and Vietnam since reunification. A native of Maryland, Campbell has researched extensively the interaction throughout history of that state with Africa. She has studied Christian evangelism in Africa and development and underdevelopment of the continent.

B.A.	Baylor University
M.A.	The Ohio State University
Ph.D.	The Ohio State University

Diaspora

Gisela Norat

Associate Professor of Spanish

Norat teaches courses in Latin American and Caribbean civilizations and culture as well as the Spanish component of the class on the African Diaspora. Her dissertation focused

on "Four Latin American Writers Liberating Taboo: Albalucia Angel, Marta Traba, Sylvia Malloy, Diamela Eltit." The dissertation examines the aesthetic inscription on non-canonical topic in contemporary women's narrative.

B.S. St. Peter's College
B.A. Montclair State College
M.A. New York University, Madrid
Ph.D. Washington University (St. Louis)

History

Violet M. Johnson

Associate Professor of History

A native of Sierra Leone, Africa, Johnson has researched immigrant women and work, "Black Foreigners: Identity and Race Consciousness in America," social issues relating to present-day Africa, and her experience as an African teaching at an American college.

B.A. Fourah Bay College, University of Sierra Leone
M.A. University of New Brunswick
Ph.D. Boston College

Political Systems

Catherine V. Scott

Professor of Political Science

Scott has studied political systems in Africa and has also probed hostage crises and U.S. foreign policy (especially with Iran, Persian Gulf states and Somalia) and the gender gap in voting. She has also studied Hillary Rodham Clinton's role in the current administration, paying particular attention to her role in healthcare reform.

B.A. University of Florida
M.A. Emory University
Ph.D. Emory University

Present-Day Social Issues

Violet M. Johnson

Associate Professor of History

A native of Sierra Leone, Africa, Johnson has researched immigrant women and work, "Black Foreigners: Identity and Race Consciousness in America," social issues relating to present-day Africa, and her experience as an African teaching at an American college.

B.A. Fourah Bay College, University of Sierra Leone
M.A. University of New Brunswick
Ph.D. Boston College

Sub-Saharan History

Penelope Campbell

Charles A. Dana Professor of History

Campbell is a historian of Sub-Saharan Africa, India, and Southeast Asia. She looks at politics and international tensions. She also studies environmental degradation and Vietnam since reunification. A native of Maryland, Campbell has researched extensively the interaction throughout history of that state with Africa. She has studied Christian evangelism in Africa and the development and underdevelopment of the continent.

B.A.	Baylor University
M.A.	The Ohio State University
Ph.D.	The Ohio State University

Agriculture

Microbial Studies

Sandra T. Bowden

Charles A. Dana Professor of Biology

The most veteran of Agnes Scott's biology faculty, Bowden's research focuses on microbial community structures below soil level. With applications in agriculture and industry, Bowden's work explores ideas spawned during her undergraduate years. She is currently undertaking fieldwork with granite potholes.

B.S.	Georgia Southern College
M.A.	University of North Carolina
Ph.D.	University of North Carolina

Weeds

Phil Gibson

Assistant Professor of Biology

Gibson studies the evolution and ecology of plant reproductive systems. His research ranges from studies of floral and fruit structure and development to investigations of plant population genetics. Currently, he is investigating the genetic dynamics of seed dispersal in agricultural weeds. He is also interested in conservation biology and the ecological impacts of transgenic plants.

B.S.	Oklahoma State University
M.S.	University of Georgia
Ph.D.	University of Colorado

Amino Acids and Copper

Leon Venable

Associate Professor of Chemistry

Venable, an inorganic chemist, has studied the synthesis and characterization of new and novel (arene)ruthenium-boron clusters. These molecules have far ranging potential applications from molecular wires to site-specific pharmaceuticals. Also, Venable is engaged in studies of the fundamental interactions between discrete amino acids and copper, a mineral essential to the human diet.

B.S. Davidson College
Ph.D. University of Virginia

Anthropology

Social

Martha Rees

Associate Professor of Anthropology

Rees is a social anthropologist specializing in household economics in Mexico and among Mexican immigrants to the United States. She completed her dissertation in anthropology at the University of Colorado at Boulder on land tenure conflicts with the expansion of Mexico City into surrounding rural areas. She is also interested in women and science, gender/race and IQ, NAFTA and Atlanta's immigrants.

Rees has had support from the National Science Foundation and held a Fulbright lectureship. She won in 1998 a National Science Foundation grant to further her research. She has worked in Mexico for more than 15 years, working in the National University, the National Indigenist Institute, the Metropolitan University and the Center for Ecodevelopment. She carried out research in many areas of Mexico.

B.A. University of Colorado
M.A. University of Colorado
Ph.D. University of Colorado

Art History

Donna Sadler

Associate Professor of Art

Sadler works on questions of patronage and piety in the art works commissioned by Louis IX and Philip the Bold. She charts the differences between the pious propaganda of the Capetian monarch and the politically savvy monuments associated with the Valois duke.

She also specializes in Gothic cathedrals and the role of women in art and advertising.

B.A. Boston University
M.A. Indiana University
Ph.D. Indiana University

Astronomy

Evolution of Massive Stars

Christopher G. De Pree
Assistant Professor of Astronomy

De Pree, co-author of *The Complete Idiots Guide to Astronomy* (Macmillan) studies the evolution of massive stars, that have masses greater than five times the mass of the sun and which will eventually blow up in supernova explosions. He also studies the early stages of the evolution of these stars, when they first start to impact their environment. DePree uses the Very Large Array (VLA) in Socorro, N.M., as his main telescope. He is also director of the popular Bradley Observatory Open Houses, a monthly lecture series open to the general public.

B.S. Duke University
M.S. University of North Carolina
Ph.D. University of North Carolina

Atlanta Semester

Isa Williams
Assistant Professor of Women's Studies and Director of The Atlanta Semester

As director of Agnes Scott's Atlanta Semester, Williams challenges students to examine women's leadership and contributions to the dynamics of social change, while tapping into the unique resources available only in Atlanta, combining experiential learning with an array of courses and independent research.

B.A. Spelman College
M.A. Georgia State University
Ph.D. Emory University

Biochemistry

Tobacco and Glaucoma, Broccoli and Cancer

Linda Hodges
William Rand Kenan Professor of Chemistry and Director of Atlanta Science Center for Women

Director of Agnes Scott's Atlanta Science Center for Women, Hodges heads the program designed to encourage women to excel in the sciences. Hodges, a biochemist, conducts

applied research on both anti-glaucoma agents in tobacco and anti-cancer agents in broccoli.

B.S. Centre College
Ph.D. University of Kentucky

Biology

Cell

John F. Pilger
Professor of Biology

Pilger's research focuses on cell biology, reproduction and the development and metamorphosis of marine invertebrates. He has published articles on invertebrate reproduction and development and has contributed to research on microscopic anatomy of invertebrates. He is also interested in new biology curricula for women.

B.S. University of Southern California
Ph.D. University of Southern California

Conservation

Phil Gibson
Assistant Professor of Biology

Gibson studies the evolution and ecology of plant reproductive systems. His research ranges from studies of floral and fruit structure and development to investigations of plant population genetics. Currently, he is investigating the genetic dynamics of seed dispersal in agricultural weeds. He is also interested in conservation biology and the ecological impacts of transgenic plants.

B.S. Oklahoma State University
M.S. University of Georgia
Ph.D. University of Colorado

Darwinian Medicine

Harry Wistrand
Professor of Biology

Wistrand, a geneticist, is available to comment on either the latest in genetics or evolutionary biology. He is knowledgeable about evolution and Darwinian medicine as well as new advances in genetics.

B.A. Austin College
M.A. University of North Texas
Ph.D. Arizona State University

Epidemiology

Douglas Kain

Visiting Assistant Professor of Biology

Kain's general research interests focus on evolutionary biology, coevolution of disease and arthropod vectors and molecular systematics. His research concentrates on the evolutionary biology of Lyme disease and more specifically on the population genetic structure and biogeography of the tick that vectors Lyme disease. He also studies the systematics of ticks.

B.A.	University of California (Berkeley)
M.A.	Humboldt State University
Ph.D.	University of California (Berkeley)

Evolution

Harry Wistrand

Professor of Biology

Wistrand, a geneticist, is available to comment on either the latest in genetics or evolutionary biology. He is knowledgeable about evolution and Darwinian medicine as well as new advances in genetics.

B.A.	Austin College
M.A.	University of North Texas
Ph.D.	Arizona State University

Evolutionary

Douglas Kain

Visiting Assistant Professor of Biology

Kain's general research interests focus on evolutionary biology, coevolution of disease and arthropod vectors and molecular systematics. His research concentrates on the evolutionary biology of Lyme disease and more specifically on the population genetic structure and biogeography of the tick that vectors Lyme disease. He also studies the systematics of ticks.

B.A.	University of California (Berkeley)
M.A.	Humboldt State University
Ph.D.	University of California (Berkeley)

Harry Wistrand

Professor of Biology

Wistrand, a geneticist, is available to comment on either the latest in genetics or evolutionary biology. He is knowledgeable about evolution and Darwinian medicine as

well as new advances in genetics.

B.A.	Austin College
M.A.	University of North Texas
Ph.D.	Arizona State University

Genetics

Phil Gibson

Assistant Professor of Biology

Gibson studies the evolution and ecology of plant reproductive systems. His research ranges from studies of floral and fruit structure and development to investigations of plant population genetics. Currently, he is investigating the genetic dynamics of seed dispersal in agricultural weeds. He is also interested in conservation biology and the ecological impacts of transgenic plants.

B.S.	Oklahoma State University
M.S.	University of Georgia
Ph.D.	University of Colorado

Douglas Kain

Visiting Assistant Professor of Biology

Kain's general research interests focus on evolutionary biology, coevolution of disease and arthropod vectors and molecular systematics. His research concentrates on the evolutionary biology of Lyme disease and more specifically on the population genetic structure and biogeography of the tick that vectors Lyme disease. He also studies the systematics of ticks.

B.A.	University of California (Berkeley)
M.A.	Humboldt State University
Ph.D.	University of California (Berkeley)

Harry Wistrand

Professor of Biology

Wistrand, a geneticist, is available to comment on either the latest in genetics or evolutionary biology. He is knowledgeable about evolution and Darwinian medicine as well as new advances in genetics.

B.A.	Austin College
M.A.	University of North Texas
Ph.D.	Arizona State University

Insect Nervous Systems

Karen Thompson

Associate Professor of Biology

Thompson studies how the nervous system circuitry is organized to support a sexually dimorphic behavior in an insect. Her research is concerned with understanding the differences between male and female insect nervous systems that allow for differences in their sexual behavior. She is addressing this question from structural, functional and developmental perspectives. The significance of this work is in its potential to provide insight into neural mechanisms underlying the evolution of specialized behavior.

B.A. Occidental College
Ph.D. University of Oregon

Marine

John F. Pilger

Professor of Biology

Pilger's research focuses on cell biology, reproduction and the development and metamorphosis of marine invertebrates. He has published articles on invertebrate reproduction and development and has contributed to research on microscopic anatomy of invertebrates. He is also interested in new biology curricula for women.

B.S. University of Southern California
Ph.D. University of Southern California

Mating Systems

Phil Gibson

Assistant Professor of Biology

Gibson studies the evolution and ecology of plant reproductive systems. His research ranges from studies of floral and fruit structure and development to investigations of plant population genetics. Currently, he is investigating the genetic dynamics of seed dispersal in agricultural weeds. He is also interested in conservation biology and the ecological impacts of transgenic plants.

B.S. Oklahoma State University
M.S. University of Georgia
Ph.D. University of Colorado

Neural Mechanisms

Karen Thompson

Associate Professor of Biology

Thompson studies how the nervous system circuitry is organized to support a sexually dimorphic behavior in an insect. Her research is concerned with understanding the differences between male and female insect nervous systems that allow for differences in their sexual behavior. She is addressing this question from structural, functional and developmental perspectives. The significance of this work is in its potential to provide insight into neural mechanisms underlying the evolution of specialized behavior.

B.A. Occidental College
Ph.D. University of Oregon

Population Genetics

Douglas Kain

Visiting Assistant Professor of Biology

Kain's general research interests focus on evolutionary biology, coevolution of disease and arthropod vectors and molecular systematics. His research concentrates on the evolutionary biology of Lyme disease and more specifically on the population genetic structure and biogeography of the tick that vectors Lyme disease. He also studies the systematics of ticks.

B.A. University of California (Berkeley)
M.A. Humboldt State University
Ph.D. University of California (Berkeley)

Reproduction

John F. Pilger

Professor of Biology

Pilger's research focuses on cell biology, reproduction and the development and metamorphosis of marine invertebrates. He has published articles on invertebrate reproduction and development and has contributed to research on microscopic anatomy of invertebrates. He is also interested in new biology curricula for women.

B.S. University of Southern California
Ph.D. University of Southern California

Brazil

Maria Krane

Director of International Education and Assistant Professor of Education

As the first director of Agnes Scott's Office of International Education, Krane brings to the position extensive teaching and administrative experience. Krane has taught linguistics, English as a foreign language and cross-cultural communication in her native Brazil and in the U.S. She has published and presented her research on different aspects of internationalization, especially study abroad and exchanges, in higher education at national and international conferences.

B.A.	Universidade Federal de Santa Maria (Brazil)
Licenciado em Letras	Universidade Federal de Santa Maria (Brazil)
M.A.T.	Indiana University
Ed.D.	Mississippi State University

Cathedrals

Donna Sadler

Associate Professor of Art

Sadler specializes in Gothic cathedrals and the role of women in art and advertising.

She works on questions of patronage and piety in the art works commissioned by Louis IX and Philip the Bold. She charts the differences between the pious propaganda of the Capetian monarch and the politically savvy monuments associated with the Valois duke.

B.A.	Boston University
M.A.	Indiana University
Ph.D.	Indiana University

Character Education

Richard Parry

Fuller E. Callaway Professor of Philosophy

Parry's area of research is ancient Greek philosophy, in particular Plato's moral theory. In his book, *Craft of Justice* (SUNY, 1996). Parry defends the claim that Plato conceived of the virtues along the lines of craft, a position that has important contemporary implications.

Parry has directed workshops and seminars, which show the relations between ancient Greek accounts of virtue and contemporary character education. Some educators, in primary and secondary schools, have turned again to virtue ethics, but they call it character education. This training is presented as an accomplishment like athletic training, except in virtue one trains the soul to perform well. Character education has

caught on with many state boards of education. For instance, Georgia has adopted a list of virtues that should be inculcated in our school children.

Parry has written about the ethics of physician-assisted suicide, the death penalty, war and nuclear deterrence.

B.A.	Georgetown University
M.A.	Yale University
Ph.D.	University of North Carolina

Chemistry

Amino Acids and Copper, Inorganic

Leon Venable

Associate Professor of Chemistry

Venable, an inorganic chemist, has studied the synthesis and characterization of new and novel (arene)ruthenium-boron clusters. These molecules have far ranging potential applications from molecular wires to site-specific pharmaceuticals. Also, Venable is engaged in studies of the fundamental interactions between discrete amino acids and copper, a mineral essential to the human diet.

B.S.	Davidson College
Ph.D.	University of Virginia

Organic, Photochemistry

Lilia C. Harvey

Assistant Professor of Chemistry

Harvey, an organic chemist, studies organic synthesis and photochemistry. She also heads Agnes Scott's role with the PKAL consortium. She was a Postdoctoral Research Fellow with the Wood Chemistry Group of the Institute of Paper Science and Technology and was a research assistant at the Georgia Institute of Technology.

B.S.	Florida International University
Ph.D.	Georgia Institute of Technology

Site-Specific Pharmaceuticals

Leon Venable

Associate Professor of Chemistry

Venable, an inorganic chemist, has studied the synthesis and characterization of new and novel (arene)ruthenium-boron clusters. These molecules have far ranging potential applications from molecular wires to site-specific pharmaceuticals. Also, Venable is engaged in studies of the fundamental interactions between discrete amino acids and copper, a mineral essential to the human diet.

B.S. Davidson College
Ph.D. University of Virginia

Chile

Juan A. Allende

Associate Professor of Political Science

Allende is a specialist in the politics of Chile as well as of Latin American studies in general. He teaches Latin American Studies and politics, women in Latin America and U.S.-Latin Relations. He is also interested in the interaction of the church and politics in Latin America.

B.S. Iowa State University
M.S. University of North Carolina
M.Div. Emory University
Ph.D. University of North Carolina

Children's Literature

Jane West

Assistant Professor of Education

West's areas of expertise include children's literature, language and literacy learning, social constructivist theory, and qualitative research methodology. She supervises Agnes Scott's students studying to be early childhood teachers.

B.S. Mississippi College
M.A. Louisiana State University
Ed.D. University of Georgia

China

Economic Reform

Feng Xu

Assistant Professor of Political Science

In the past three years, Xu's research has been on China's economic reform and women migrant workers in China. This year, she is teaching "Introduction to World Politics," "Issues in Global Migration," and "Approaches to International Relations." Her general academic interests are International Relations, Women's Studies, Asian Studies, Migration Studies, Nationalism and Transnationalism.

B.A.	Beijing Foreign Languages Institute
M.A.	York University
Ph.D.	York University

Education, U.S.-China Relations

Mary Brown Bullock

President of the College and Professor of History

Bullock serves on the Board of Directors of the National Committee for U.S.-China Relations, the Board of the Council for International Exchange of Scholars (the Fulbright board) and is a member of the Council for Foreign Relations and the Visiting Committee/East Asian Studies at Harvard University. Additionally, Bullock is a trustee of the United Board for Christian Higher Education in Asia and the China Medical Board of New York. She also serves on The Carter Center Board of Councilors and the Board of Directors of SunTrust Bank, Atlanta.

She speaks to issues involving China and its history, single sex (women's) education, liberal arts education, higher education in general and town/gown relations.

B.A.	Agnes Scott College
M.A.	Stanford University
Ph.D.	Stanford University

Women Migrant Workers in China

Feng Xu

Assistant Professor of Political Science

In the past three years, Xu's research has been on China's economic reform and women migrant workers in China. This year, she is teaching "Introduction to World Politics," "Issues in Global Migration," and "Approaches to International Relations." Her general academic interests are international relations, women's studies, Asian studies, migration studies, nationalism and transnationalism.

B.A.	Beijing Foreign Languages Institute
------	-------------------------------------

M.A. York University
Ph.D. York University

Closely-held Businesses

Jill Hazelbauer-Von der Ohe

Visiting Assistant Professor of Economics

Hazelbauer-Von der Ohe is a CPA (Certified Public Accountant), CMA (Certified Management Accountant), CFM (Certified in Financial Management) and CVA (Certified Valuation Analyst). In the past 14 months, she has worked in Uganda with the Cooperative Bank training managers in the budgeting process, and in Poland working with a company on cost allocation and lecturing on financial analysis and budgeting. Both projects were done on a volunteer basis. She is also actively involved in valuing closely-held businesses.

B.A. Knox College
Accounting
Certificate University of Wisconsin
M.B.A. Rockford College
(also holds CFM, CMA, CVA and CPA)

Concept of Self

David P. Behan

Professor of Philosophy

Behan's historical interests include work on 17th and 18th century philosophers such as Descartes, Locke and Hume. He also studies philosophic problems including the concept of self and personal identity. A recipient of many honors and grants, Behan has served as both president and vice president of the Georgia Philosophical Society.

B.A. Yale University
Ph.D. Vanderbilt University

Cross-cultural

An African Teaching in America

Violet M. Johnson

Associate Professor of History

A native of Sierra Leone, Africa, Johnson has researched immigrant women and work, "Black Foreigners: Identity and Race Consciousness in America," social issues relating to present-day Africa, and her experience as an African teaching at an American college.

B.A. Fourah Bay College, University of Sierra Leone

M.A. University of New Brunswick
Ph.D. Boston College

Experiences

Ayse Ilgaz Carden

Professor of Psychology

A native of Turkey, Carden has researched the psychology of homesickness as well as the effects of cross-cultural experiences. She has been recognized by the Atlanta YMCA as a Woman of Achievement and has won numerous grants and honors.

B.A. Agnes Scott College
M.S. Emory University
Ph.D. Emory University

Culture Shock and International Students

Anja Bernardy

Visiting Assistant Professor of Spanish

Bernardy's research focuses on applied Spanish linguistics and methods of teaching. Bernardy has also studied the culture shock facing international students and has taught English as a second language.

B.S. University of Oklahoma
B.A. University of Oklahoma
M.A. University of Oklahoma
Ph.D. University of Pittsburgh

Cuba

Literature

Rafael Ocasio

Associate Professor of Spanish

Ocasio is an expert in Latin American literature, especially Cuban literature. The literature of Latina women is also one of his interests. Additionally, Ocasio has studied contemporary Latin American politics.

B.A. University of Puerto Rico
M.A. Eastern New Mexico University
Ph.D. University of Kentucky

Dance

Marylin B. Darling
Professor of Dance

Darling's interests range from dance (choreography, criticism, theory and anthropology) and the fine arts to the politics of higher education. She is available to comment on dance as a universal language and dance as a Southern art form. She has published on "Affirmative Action and the Placement of Women in Higher Education."

B.S.	Florida State University
M.M.	Florida State University
Ph.D.	Georgia State University

Depression

Barbara J. Blatchley
Associate Professor of Psychology

As a researcher, Blatchley has worked with rats, studying the affects of environment on their levels of depression.

B.A.	Indiana University
Ph.D.	University of South Carolina

Diversity

Sally MacEwen
Associate Professor of Classical Languages and Literatures

MacEwen has expanded her classics research to include the history of ideas (especially honesty, heroism and diversity), ancient women and female heroes in the movies. She is also one of Agnes Scott's leaders in multicultural issues and helps lead the College's chapter of the National Coalition Building Institute.

B.A.	Mount Holyoke College
Ph.D.	University of Pennsylvania

Dual-Career Couples

Jennifer Lucas
Assistant Professor of Psychology

Lucas specializes in Industrial/Organizational Psychology and has researched work-family issues. Her current research is centered on dual-career couples. She recently completed a project that examined the types of dual-career couples.

B.S.	Auburn University
M.S.	Kansas State University
Ph.D.	Kansas State University

Economics

Federal Reserve

Rosemary T. Cunningham
Professor of Economics

Cunningham has been a leader in the teaching of economics and investments to women. She has written a software package for her investments class and studies gender differences in investing. She is well informed about stock markets, gender differences in investing and the Federal Reserve. Cunningham has also worked with women entrepreneurs, placing student interns with them as part of a program with funds from the Kauffman Foundation.

B.A.	Fordham University
M.A.	Fordham University
Ph.D.	Fordham University

GATT

Edmund J. Sheehey
Dean of the College and Hal & Julia T. Smith Professor of Free Enterprise

Sheehey, an economist, spent several years working with GATT (now the World Trade Organization). He also studies issues of college growth and development and curricular reform. As Dean of the College, Sheehey speaks to matters related to the College's curriculum and other matters.

B.A.	Fordham University
M.A.	Fordham University
Ph.L.	Woodstock College
M.Div.	Woodstock College
Ph.D.	Michigan State University

Gender Differences in Investing

Rosemary T. Cunningham
Professor of Economics

Cunningham has been a leader in the teaching of economics and investments to women. She has written a software package for her investments class and studies gender differences in investing. She is well informed about stock markets, gender differences in investing and the Federal Reserve. Cunningham has also worked with women entrepreneurs, placing student interns with them as part of a program with funds from the Kauffman Foundation.

B.A.	Fordham University
M.A.	Fordham University
Ph.D.	Fordham University

Household Economics in Mexico, NAFTA

Martha Rees

Associate Professor of Anthropology

Rees is a social anthropologist specializing in household economics in Mexico and among Mexican immigrants to the United States. She completed her dissertation in anthropology at the University of Colorado at Boulder on land tenure conflicts with the expansion of Mexico City into surrounding rural areas. She is also interested in women and science, gender/race and IQ, NAFTA and Atlanta's immigrants.

Rees has had support from the National Science Foundation and held a Fulbright lectureship. She won in 1998 a National Science Foundation grant to further her research. She has worked in Mexico for more than 15 years, working in the National University, the National Indigenist Institute, the Metropolitan University and the Center for Ecodevelopment. She carried out research in many areas of Mexico.

B.A.	University of Colorado
M.A.	University of Colorado
Ph.D.	University of Colorado

Racial Discrimination in Housing Markets

Richard W. Martin

Assistant Professor of Economics

Martin's main research interest is urban labor markets. In particular he investigates the combined impact of employment suburbanization and racial discrimination in suburban housing markets on central-city residents.

B.A.	University of Illinois at Urbana-Champaign
M.S.	University of Illinois at Urbana-Champaign
Ph.D.	University of Illinois at Urbana-Champaign

Stock Market

Rosemary T. Cunningham

Professor of Economics

Cunningham has been a leader in the teaching of economics and investments to women. She has written a software package for her investments class and studies gender differences in investing. She is well informed about stock markets, gender differences in investing and the Federal Reserve. Cunningham has also worked with women

entrepreneurs, placing student interns with them as part of a program with funds from the Kauffman Foundation.

B.A.	Fordham University
M.A.	Fordham University
Ph.D.	Fordham University

Urban Labor Markets

Richard W. Martin
Assistant Professor of Economics

Martin's main research interest is urban labor markets. In particular he investigates the combined impact of employment suburbanization and racial discrimination in suburban housing markets on central-city residents.

B.A.	University of Illinois at Urbana-Champaign
M.S.	University of Illinois at Urbana-Champaign
Ph.D.	University of Illinois at Urbana-Champaign

Education

Biology Curricula for Women

John F. Pilger
Professor of Biology

Pilger's research focuses on cell biology, reproduction and the development and metamorphosis of marine invertebrates. He has published articles on invertebrate reproduction and development and has contributed to research on microscopic anatomy of invertebrates. He is also interested in new biology curricula for women.

B.S.	University of Southern California
Ph.D.	University of Southern California

Character Education

Richard Parry
Fuller E. Callaway Professor of Philosophy

Parry's area of research is ancient Greek philosophy, in particular Plato's moral theory. In his book, *Craft of Justice* (SUNY, 1996). Parry defends the claim that Plato conceived of the virtues along the lines of craft, a position that has important contemporary implications.

Parry has directed workshops and seminars, which show the relations between ancient Greek accounts of virtue and contemporary character education. Some educators, in primary and secondary schools, have turned again to virtue ethics, but they call it

character education. This training is presented as an accomplishment like athletic training, except in virtue one trains the soul to perform well. Character education has caught on with many state boards of education. For instance, Georgia has adopted a list of virtues that should be inculcated in our school children.

Parry has written about the ethics of physician-assisted suicide, the death penalty, war and nuclear deterrence.

B.A.	Georgetown University
M.A.	Yale University
Ph.D.	University of North Carolina

Children's Literature, Communication Arts, Curriculum Development

Jane West

Assistant Professor of Education

West's areas of expertise include children's literature, language and literacy learning, social constructivist theory, and qualitative research methodology. She supervises Agnes Scott's students studying to be early childhood teachers.

B.S.	Mississippi College
M.A.	Louisiana State University
Ed.D.	University of Georgia

Foreign Language Learning

Maria Krane

Director of International Education and Assistant Professor of Education

As the first director of Agnes Scott's Office of International Education, Krane brings to the position extensive teaching and administrative experience. Krane has taught linguistics, English as a foreign language and cross-cultural communication in her native Brazil and in the U.S. She has published and presented her research on different aspects of internationalization-especially study abroad and exchanges-in higher education at national and international conferences.

B.A.	Universidade Federal de Santa Maria (Brazil)
Licenciado em Letras	Universidade Federal de Santa Maria (Brazil)
M.A.T.	Indiana University
Ed.D.	Mississippi State University

Foreign Language Pedagogy

Ingrid Wieshofer
Professor of German

Awarded the Cross Of the Order of Merit of the Federal Republic of Germany, Wieshofer teaches German language and literature and is director of the College's Language Across the Curriculum Program. She is also well versed in foreign language pedagogy. Wieshofer is also winner of the 1997 Vulcan Materials Company Excellence in Teaching award.

Teacher's Diploma University of Vienna
Ph.D. University of Vienna

Gender Equity in Science Education, Global Thinking Project

Julie Weisberg
Associate Professor of Education

Weisberg, a former high school chemistry teacher, studies technology in the classroom and directs the teacher education program. She is also associate director of the Global Thinking Project, which encourages American and Russian students to collaborate, through the Internet, on solving environmental questions.

B.S. Tufts University
M.Ed. Emory University
Ph.D. University of North Carolina

History of German Education

Katharine D. Kennedy
Associate Professor of History

Chair of Agnes Scott's Women's Studies Program, Kennedy's main research interest is the history of German education. She is a modern European history scholar, especially the history of European women. She has taught classes on Women in Modern European History, Europe in the Victorian Era, Europe (1914-45), Europe Since 1945, the Holocaust and Russia and the Soviet Union in the 20th century. Her research interests include education and formation of German national identity in the 19th and 20th centuries.

B.A. Duke University
M.A. Stanford University
Ph.D. Stanford University

Mathematics

Gué P. Hudson

Vice President for Student Life and Community Relations and Dean of Students

As Agnes Scott's dean of students and vice president of community relations, Hudson stays in close contact with debates about student and enrollment issues as well as town/gown relations. She is well versed in the dynamics of the College's Honor System, considered one of the best functioning in the country. She has also taught mathematics in elementary, middle and secondary schools. She is especially interested in teaching young girls mathematics.

B.A.	Agnes Scott College
M.A.T.	Emory University

Myrtle H. Lewin

Professor of Mathematics

Lewin teaches and studies mathematics, the learning and teaching of mathematics, and gender issues in mathematics education. She has an interest in abstract geometries and the relationship between learning theories (such as social constructivism) and teaching methodologies (such as collaborative learning).

B.Sc.	University of the Witwatersrand, Johannesburg
B.Sc.Hons	University of the Witwatersrand, Johannesburg
M.A.	University of Wisconsin
Ph.D.	University of Wisconsin

Music

Theodore K. Mathews

Professor of Music

Mathews began his career as a music professor with a Ph.D. in musicology; his dissertation focused on the masses of Anton Bruckner. At Agnes Scott, he teaches music appreciation, music theory and the history of western and American music. He is also interested in the history of American jazz, world music, choral methods and music education.

A.B.	Brown University
A.M.T.	Harvard University
Ph.D.	University of Michigan

Reading

Kathy Froelich

Visiting Assistant Professor of Education

Froelich is currently working with Agnes Scott's Master of Arts in Teaching Secondary English (MAT) students, helping them to build a solid knowledge base concerning the teaching of reading to students in high school. She also looks at ESOL students learning to read in the English classroom. Her research is currently focused on mentoring first and second year teachers as they learn the "ropes" of the classroom. Froelich also works with school districts across the country developing and implementing in-service programs for grades K-8.

B.S.	Florida State University (Language, Literacy and Learning)
B.S.	Florida State University (Speech Pathology/Audiology)
M.S.	Florida State University
Ph.D.	Fordham University

Jane West

Assistant Professor of Education

West's areas of expertise include children's literature, language and literacy learning, social constructivist theory, and qualitative research methodology. She supervises Agnes Scott's students studying to be early childhood teachers.

B.S.	Mississippi College
M.A.	Louisiana State University
Ed.D.	University of Georgia

Social Studies

Jane West

Assistant Professor of Education

West's areas of expertise include children's literature, language and literacy learning, social constructivist theory, and qualitative research methodology. She supervises Agnes Scott's students studying to be early childhood teachers.

B.S.	Mississippi College
M.A.	Louisiana State University
Ed.D.	University of Georgia

Technology in the Classroom

Lawrence H. Riddle

Associate Professor of Mathematics

Riddle and his math students have created a web site on women mathematicians, the most extensive of its kind (www.agnesscott.edu/lriddle/women/women.htm). Riddle, who has been interviewed on NPR's *54 Percent* and whose web site has been featured in several articles, is also an excellent source on the use of technology in the classroom.

B.S.	Carnegie-Mellon University
M.S.	University of Illinois
Ph.D.	University of Illinois

Julie Weisberg

Associate Professor of Education

Weisberg, a former high school chemistry teacher, studies technology in the classroom and directs the teacher education program. She is also associate director of the Global Thinking Project, which encourages American and Russian students to collaborate, through the Internet, on solving environmental questions.

B.S.	Tufts University
M.Ed.	Emory University
Ph.D.	University of North Carolina

Writing

Christine S. Cozzens

Associate Professor of English

Cozzens' research and writing interests include all aspects of writing and writing pedagogy, nonfiction as a genre of creative writing (the personal essay, the memoir), travel writing (history and current), journalism, 19th-century British literature (especially fiction), Irish history and literature (including contemporary topics), women and literature (especially women, literature and social change, war) and training teachers of secondary English.

B.A.	Stanford University
M.A.	Stanford University
Ph.D.	University of California, Berkeley

English

Evolution

Steven R. Guthrie

Associate Professor of English

Guthrie teaches medieval literature, the history of English and poetry writing. He publishes in the areas of historical linguistics and medieval English and continental poetry and poetics; he is the world's leading authority on Chaucer's poetic meter.

B.A. Antioch College
Ph.D. Brown University

As a Second Language

Anja Bernardy

Visiting Assistant Professor of Spanish

Bernardy's research focuses on applied Spanish linguistics and methods of teaching. Bernardy has also studied the culture shock facing international students and has taught English as a second language.

B.S. University of Oklahoma
B.A. University of Oklahoma
M.A. University of Oklahoma
Ph.D. University of Pittsburgh

Kathy Froelich

Visiting Assistant Professor of Education

Froelich is currently working with Agnes Scott's Master of Arts in Teaching Secondary English (MAT) students, helping them to build a solid knowledge base concerning the teaching of reading to students in high school. She also looks at ESOL students learning to read in the English classroom. Her research is currently focused on mentoring first and second year teachers as they learn the "ropes" of the classroom. Froelich also works with school districts across the country developing and implementing in-service programs for grades K-8.

B.S. Florida State University (Language, Literacy and Learning)
B.S. Florida State University (Speech Pathology/Audiology)
M.S. Florida State University
Ph.D. Fordham University

Film

African-American

Willie Tolliver

Assistant Professor of English

An aficionado of 19th-century American literature and the work of Henry James, Tolliver is also well versed in African-American literature and film. While at Agnes Scott, he has taught African-American literature, African-American women novelists and 19th century American fiction.

B.A.	Williams College
M.A.	University of Chicago
Ph.D.	University of Chicago

Female Heroes

Sally MacEwen

Associate Professor of Classical Languages and Literatures

MacEwen has expanded her classics research to include the history of ideas (especially honesty, heroism and diversity), ancient women and female heroes in the movies. She is also one of Agnes Scott's leaders in multicultural issues and helps lead the College's chapter of the National Coalition Building Institute.

B.A.	Mount Holyoke College
Ph.D.	University of Pennsylvania

Hollywood

Christopher Ames

Professor of English

Ames' research areas include 20th century fiction and narrative theory, contemporary literature and postmodernism, Hollywood and independent film and culture. His film work includes a special focus on self-referentiality in films (i.e., movies about movies) and the cultural significance of Hollywood in the American imagination.

B.A.	University of Texas, Austin
Ph.D.	Stanford University

Movie Musicals

Patricia G. Pinka

Professor of English

Pinka's expertise sits on two ends of the literary spectrum - English Renaissance literature, the epic John Milton and John Donne, to movie musicals. She is the author of a book on Donne and numerous papers on Donne, Bacon, Ben Jonson and Milton and has received

grants, served as a participant with numerous seminars.

B.A. University of Pittsburgh
M.A. San Francisco State College
Ph.D. University of Pittsburgh

Screenwriting

Dudley W. Sanders
Associate Professor of Theatre

Sanders serves as the set, costume and lighting designer for the Theatre Program and for the student theatre troupe, Blackfriars. He also teaches playwriting and screenwriting. His play "Maggie and the Bird Go Fishing" has enjoyed almost two dozen productions around the country, and he is represented as a screenwriter by ICM.

A.B. Kenyon College
M.F.A. Northwestern University

Fitness

A. Page Remillard
Director of Athletics

With more than 20 years experience as a coach and administrator at NCAA division III schools, Remillard is a former member of NCAA rules committees (water polo and swimming) and NCAA women's softball championship committee. He has also coached extensively, including U.S. Olympic Festival water polo teams. He is available to comment on collegiate, Olympic and professional sports, gender equity, Title IX, personal fitness and "Men's Roles in Women's Athletics."

B.S. California State Polytechnic University, Pomona
M.A. University of La Verne

Foreign Policy

Africa

Violet M. Johnson
Associate Professor of History

A native of Sierra Leone, Africa, Johnson has researched immigrant women and work, "Black Foreigners: Identity and Race Consciousness in America," social issues relating to present-day Africa, and her experience as an African teaching at an American college.

B.A. Fourah Bay College, University of Sierra Leone
M.A. University of New Brunswick

Ph.D. Boston College

China

Mary Brown Bullock

President of the College and Professor of History

Bullock serves on the Board of Directors of the National Committee for U.S.-China Relations, the Board of the Council for International Exchange of Scholars (the Fulbright board) and is a member of the Council for Foreign Relations and the Visiting Committee/East Asian Studies at Harvard University. Additionally, Bullock is a trustee of the United Board for Christian Higher Education in Asia and the China Medical Board of New York. She also serves on The Carter Center Board of Councilors and the Board of Directors of SunTrust Bank, Atlanta.

She speaks to issues involving China and its history, single sex (women's) education, liberal arts education, higher education in general and town/gown relations.

B.A. Agnes Scott College
M.A. Stanford University
Ph.D. Stanford University

**Iran,
Persian Gulf,
Somalia,
U.S.**

Catherine V. Scott

Professor of Political Science

Scott has studied political systems in Africa and has also probed hostage crises and U.S. foreign policy (especially with Iran, Persian Gulf states and Somalia) and the gender gap in voting. She has also studied Hillary Rodham Clinton's role in the current administration, paying particular attention to her role in healthcare reform.

B.A. University of Florida
M.A. Emory University
Ph.D. Emory University

French

Enlightenment

Julia K. De Pree

Assistant Professor of French

De Pree's area of research is 18th-century French literature. In 1998, she published a book on the concept of epistolary lyric (UNC Press). In addition to her study in the United

States, she has studied at the Sorbonne, at the Institut d'études françaises d'Avignon and at Oxford University.

B.A. Duke University
M.A. University of North Carolina
Ph.D. University of North Carolina

Michael R. Lynn

Assistant Professor of History

Lynn is a scholar of the history of the Enlightenment, especially in 18th century Paris, but he can also comment on French history, the history of Early Modern England, the Renaissance, the Reformation, history of science and the history of women (1400-1800). His dissertation (August 1997) studied "Enlightenment in the Republic of Science: The Popularization of Natural Philosophy in Eighteenth-Century Paris."

B.A. Pacific Lutheran University
B.S. Pacific Lutheran University
M.A. University of Wisconsin-Madison
Ph.D. University of Wisconsin-Madison

Medieval

David Rollo

Adeline Arnold Loridans Professor of French

A Cambridge University graduate, Rollo specializes in 12th century French literature. He has published many articles and last year a book, *Historical Fabrication, Ethnic History and French Romance in Twelfth Century England*.

B.A. Emmanuel College, Cambridge University
M.A. Emmanuel College, Cambridge University
Ph.D. Princeton University

Gender Gap

Investments

Rosemary T. Cunningham

Professor of Economics

Cunningham has been a leader in the teaching of economics and investments to women. She has written a software package for her investments class and studies gender differences in investing. She is well informed about stock markets, gender differences in investing and the Federal Reserve. Cunningham has also worked with women entrepreneurs, placing student interns with them as part of a program with funds from the Kauffman Foundation.

B.A. Fordham University

M.A. Fordham University
Ph.D. Fordham University

Voting

Catherine V. Scott
Professor of Political Science

Scott has studied political systems in Africa and has also probed hostage crises and U.S. foreign policy (especially with Iran, Persian Gulf states and Somalia) and the gender gap in voting. She has also studied Hillary Rodham Clinton's role in the current administration, paying particular attention to her role in healthcare reform.

B.A. University of Florida
M.A. Emory University
Ph.D. Emory University

Gender Relations

Brenda A. Hoke
Associate Professor of Sociology

Hoke is Agnes Scott's expert on workplace issues, gender relations and the sociology of work and occupations. Hoke has researched the effects of welfare reform on recipients.

B.A. North Carolina Central University
M.A. Atlanta University
M.A. SUNY at Stony Brook
Ph.D. SUNY at Stony Brook

German Studies

Ingrid Wieshofer
Professor of German

Awarded the Cross Of the Order of Merit of the Federal Republic of Germany, Wieshofer teaches German language and literature and is director of the College's Language Across the Curriculum Program. She is also well versed in foreign language pedagogy. Wieshofer is also winner of the 1997 Vulcan Materials Company Excellence in Teaching award.

Teacher's Diploma University of Vienna
Ph.D. University of Vienna

History of German Education

Katharine D. Kennedy

Associate Professor of History

Chair of Agnes Scott's Women's Studies Program, Kennedy's main research interest is the history of German education. She is a modern European history scholar, especially the history of European women. She has taught classes on Women in Modern European History, Europe in the Victorian Era, Europe (1914-45), Europe Since 1945, the Holocaust and Russia and the Soviet Union in the 20th century. Her research interests include education and formation of German national identity in the 19th and 20th centuries.

B.A.	Duke University
M.A.	Stanford University
Ph.D.	Stanford University

Global Thinking Project

Julie Weisberg

Associate Professor of Education

Weisberg, a former high school chemistry teacher, studies technology in the classroom and directs the teacher education program. She is also associate director of the Global Thinking Project, which encourages American and Russian students to collaborate, through the Internet, on solving environmental questions.

B.S.	Tufts University
M.Ed.	Emory University
Ph.D.	University of North Carolina

Greek Philosophy

Richard Parry

Fuller E. Callaway Professor of Philosophy

Parry's area of research is ancient Greek philosophy, in particular Plato's moral theory. In his book, *Craft of Justice* (SUNY, 1996). Parry defends the claim that Plato conceived of the virtues along the lines of craft, a position that has important contemporary implications.

Parry has directed workshops and seminars, which show the relations between ancient Greek accounts of virtue and contemporary character education. Some educators, in primary and secondary schools, have turned again to virtue ethics, but they call it character education. This training is presented as an accomplishment like athletic

training, except in virtue one trains the soul to perform well. Character education has caught on with many state boards of education. For instance, Georgia has adopted a list of virtues that should be inculcated in our school children.

Parry has written about the ethics of physician-assisted suicide, the death penalty, war and nuclear deterrence.

B.A.	Georgetown University
M.A.	Yale University
Ph.D.	University of North Carolina

Heroism

Sally MacEwen

Associate Professor of Classical Languages and Literatures

MacEwen has expanded her classics research to include the history of ideas (especially honesty, heroism and diversity), ancient women and female heroes in the movies. She is also one of Agnes Scott's leaders in multicultural issues and helps lead the College's chapter of the National Coalition Building Institute.

B.A.	Mount Holyoke College
Ph.D.	University of Pennsylvania

Higher Education

**College Growth and Development,
Curricular Reform**

Edmund J. Sheehey

Dean of the College and Hal & Julia T. Smith Professor of Free Enterprise

Sheehey, an economist, spent several years working with GATT (now the World Trade Organization). He also studies issues of college growth and development and curricular reform. As Dean of the College, Sheehey speaks to matters related to the College's curriculum and other matters.

B.A.	Fordham University
M.A.	Fordham University
Ph.L.	Woodstock College
M.Div.	Woodstock College
Ph.D.	Michigan State University

Internationalization

Maria Krane

Director of International Education and Assistant Professor of Education

As the first director of Agnes Scott's Office of International Education, Krane brings to the position extensive teaching and administrative experience. Krane has taught linguistics, English as a foreign language and cross-cultural communication in her native Brazil and in the U.S. She has published and presented her research on different aspects of internationalization-especially study abroad and exchanges-in higher education at national and international conferences.

B.A.	Universidade Federal de Santa Maria (Brazil)
Licenciado em Letras	Universidade Federal de Santa Maria (Brazil)
M.A.T.	Indiana University
Ed.D.	Mississippi State University

Liberal Arts Education

Mary Brown Bullock

President of the College and Professor of History

Bullock serves on the Board of Directors of the National Committee for U.S.-China Relations, the Board of the Council for International Exchange of Scholars (the Fulbright board) and is a member of the Council for Foreign Relations and the Visiting Committee/East Asian Studies at Harvard University. Additionally, Bullock is a trustee of the United Board for Christian Higher Education in Asia and the China Medical Board of New York. She also serves on The Carter Center Board of Councilors and the Board of Directors of SunTrust Bank, Atlanta.

She speaks to issues involving China and its history, single sex (women's) education, liberal arts education, higher education in general and town/gown relations.

B.A.	Agnes Scott College
M.A.	Stanford University
Ph.D.	Stanford University

Peggy Thompson

Associate Professor of English

Thompson teaches and writes about Restoration and 18th-century literature. She has also published on the theoretical relationships between comedy and Christianity. She is also a winner of the Vulcan Materials Company Teaching Excellence Award.

B.A.	Arizona State University
M.A. (Philosophy)	Emory University
M.A. (Humanities)	Arizona State University

M.A. (English) Indiana University
Ph.D. Indiana University

Politics

Marilyn B. Darling
Professor of Dance

Darling's interests range from dance (choreography, criticism, theory and anthropology) and the fine arts to the politics of higher education. She is available to comment on dance as a universal language and dance as a Southern art form. She has published on "Affirmative Action and the Placement of Women in Higher Education."

B.S. Florida State University
M.M. Florida State University
Ph.D. Georgia State University

Undergraduate Mathematics Education

Myrtle H. Lewin
Professor of Mathematics

Lewin teaches and studies mathematics, the learning and teaching of mathematics and gender issues in mathematics education. She has an interest in abstract geometries and the relationship between learning theories (such as social constructivism) and teaching methodologies (such as collaborative learning).

B.Sc. University of the Witwatersrand, Johannesburg
B.Sc.Hons University of the Witwatersrand, Johannesburg
M.A. University of Wisconsin
Ph.D. University of Wisconsin

Olga Yiparaki
Assistant Professor of Mathematics

Yiparaki is an expert in a variety of mathematical applications, including algebra, multivariable calculus and topography. Her research interests include combinatorial set theory, Ramsey theory, logic, cardinal characteristics of the continuum, graph theory and undergraduate mathematics education.

B.A. College of Wooster
Ph.D. University of Michigan

Women's Education

Mary Brown Bullock

President of the College and Professor of History

Bullock serves on the Board of Directors of the National Committee for U.S.-China Relations, the Board of the Council for International Exchange of Scholars (the Fulbright board) and is a member of the Council for Foreign Relations and the Visiting Committee/East Asian Studies at Harvard University. Additionally, Bullock is a trustee of the United Board for Christian Higher Education in Asia and the China Medical Board of New York. She also serves on The Carter Center Board of Councilors and the Board of Directors of SunTrust Bank, Atlanta.

She speaks to issues involving China and its history, single sex (women's) education, liberal arts education, higher education in general and town/gown relations.

B.A.	Agnes Scott College
M.A.	Stanford University
Ph.D.	Stanford University

History

African

Penelope Campbell

Charles A. Dana Professor of History

Campbell is a historian of Sub-Saharan Africa, India, and Southeast Asia. She looks at politics and international tensions. She also studies environmental degradation and Vietnam since reunification. A native of Maryland, Campbell has researched extensively the interaction throughout history of that state with Africa. She has studied Christian evangelism in Africa and the development and underdevelopment of the continent.

B.A.	Baylor University
M.A.	The Ohio State University
Ph.D.	The Ohio State University

Violet M. Johnson

Associate Professor of History

A native of Sierra Leone, Africa, Johnson has researched immigrant women and work, "Black Foreigners: Identity and Race Consciousness in America," social issues relating to present-day Africa, and her experience as an African teaching at an American college.

B.A.	Fourah Bay College, University of Sierra Leone
M.A.	University of New Brunswick
Ph.D.	Boston College

Ancient Women

Gail Cabisius

Associate Professor of Classical Languages and Literatures

Director of Women's Studies from 1995 to 1998, Cabisius has a strong interest in women in antiquity and lesbian and gay studies. Her main academic expertise is in the literature and history of Rome, especially in the period of the late Republic and early Empire. She has published on the Latin philosophical poet Lucretius.

B.A.	Smith College
M.P.A.	Georgia State University
M.A.	Bryn Mawr College
Ph.D.	Bryn Mawr College

Sally MacEwen

Associate Professor of Classical Languages and Literatures

MacEwen has expanded her classics research to include the history of ideas (especially honesty, heroism and diversity), ancient women and female heroes in the movies. She is also one of Agnes Scott's leaders in multicultural issues and helps lead the College's chapter of the National Coalition Building Institute.

B.A.	Mount Holyoke College
Ph.D.	University of Pennsylvania

Early Modern England

Michael R. Lynn

Assistant Professor of History

Lynn is a scholar of the history of the Enlightenment, especially in 18th century Paris, but he can also comment on French history, the history of Early Modern England, the Renaissance, the Reformation, history of science and the history of women (1400-1800). His dissertation (August 1997) studied "Enlightenment in the Republic of Science: The Popularization of Natural Philosophy in Eighteenth-Century Paris."

B.A.	Pacific Lutheran University
B.S.	Pacific Lutheran University
M.A.	University of Wisconsin-Madison
Ph.D.	University of Wisconsin-Madison

Europe since 1945,
Europe in Victorian Era,
Europe between the World Wars,
European Intellectual History,
European Women

Katharine D. Kennedy

Associate Professor of History

Chair of Agnes Scott's Women's Studies Program, Kennedy's main research interest is the history of German education. She is a modern European history scholar, especially the history of European women. She has taught classes on Women in Modern European History, Europe in the Victorian Era, Europe (1914-45), Europe Since 1945, the Holocaust and Russia and the Soviet Union in the 20th century. Her research interests include education and formation of German national identity in the 19th and 20th centuries.

B.A.	Duke University
M.A.	Stanford University
Ph.D.	Stanford University

French

Michael R. Lynn

Assistant Professor of History

Lynn is a scholar of the history of the Enlightenment, especially in 18th century Paris, but he can also comment on French history, the history of Early Modern England, the Renaissance, the Reformation, history of science and the history of women (1400-1800). His dissertation (August 1997) studied "Enlightenment in the Republic of Science: The Popularization of Natural Philosophy in Eighteenth-Century Paris."

B.A.	Pacific Lutheran University
B.S.	Pacific Lutheran University
M.A.	University of Wisconsin-Madison
Ph.D.	University of Wisconsin-Madison

German Education

Katharine D. Kennedy

Associate Professor of History

Chair of Agnes Scott's Women's Studies Program, Kennedy's main research interest is the history of German education. She is a modern European history scholar, especially the history of European women. She has taught classes on Women in Modern European History, Europe in the Victorian Era, Europe (1914-45), Europe Since 1945, the Holocaust and Russia and the Soviet Union in the 20th century. Her research interests

include education and formation of German national identity in the 19th and 20th centuries.

B.A.	Duke University
M.A.	Stanford University
Ph.D.	Stanford University

Of Ideas

Sally MacEwen

Associate Professor of Classical Languages and Literatures

MacEwen has expanded her classics research to include the history of ideas (especially honesty, heroism and diversity), ancient women and female heroes in the movies. She is also one of Agnes Scott's leaders in multicultural issues and helps lead the College's chapter of the National Coalition Building Institute.

B.A.	Mount Holyoke College
Ph.D.	University of Pennsylvania

Irish

Christine S. Cozzens

Associate Professor of English

Cozzens' research and writing interests include all aspects of writing and writing pedagogy, nonfiction as a genre of creative writing (the personal essay, the memoir), travel writing (history and current), journalism, 19th-century British literature (especially fiction), Irish history and literature (including contemporary topics), women and literature (especially women, literature and social change, war) and training teachers of secondary English.

B.A.	Stanford University
M.A.	Stanford University
Ph.D.	University of California, Berkeley

Reformation, Renaissance

Michael R. Lynn

Assistant Professor of History

Lynn is a scholar of the history of the Enlightenment, especially in 18th century Paris, but he can also comment on French history, the history of Early Modern England, the Renaissance, the Reformation, history of science and the history of women (1400-1800). His dissertation (August 1997) studied "Enlightenment in the Republic of Science: The Popularization of Natural Philosophy in Eighteenth-Century Paris."

B.A. Pacific Lutheran University
B.S. Pacific Lutheran University
M.A. University of Wisconsin-Madison
Ph.D. University of Wisconsin-Madison

Roman

James C. Abbot, Jr.

Visiting Assistant Professor of Classical Languages and Literatures

Abbot's expertise is Roman History, particularly the areas of cultural and intellectual history. His dissertation, under revision for possible publication, is a study in ethics entitled *Roman Deceit*. In it, he explores changing social attitudes regarding deceptive practices in the period of the late Roman republic and early imperial era.

A.B. Princeton University
Ed.M. Harvard University
Ph.D. University of North Carolina

And Science

Michael R. Lynn

Assistant Professor of History

Lynn is a scholar of the history of the Enlightenment, especially in 18th century Paris, but he can also comment on French history, the history of Early Modern England, the Renaissance, the Reformation, history of science and the history of women (1400-1800). His dissertation (August 1997) studied "Enlightenment in the Republic of Science: The Popularization of Natural Philosophy in Eighteenth-Century Paris."

B.A. Pacific Lutheran University
B.S. Pacific Lutheran University
M.A. University of Wisconsin-Madison
Ph.D. University of Wisconsin-Madison

Southern

Michele Gillespie

Associate Professor of History

Gillespie's research focuses on gender, race and work in the antebellum South (1800-1860). She is currently editing a book that explores this theme entitled *Neither Lady, Nor Slave: Working Women of the Old South*. She has recently co-edited *The Devil's Lane: Sex and Race in the Early South* (1997) with Catherine Clinton. In addition, she has examined artisans in antebellum southern politics and society in her forthcoming book, *Free Labor in an Unfree World: White Artisans in Slaveholding Georgia* (1999).

B.A. Rice University
Ph.D. Princeton University

Women (1400-1800)

Michael R. Lynn

Assistant Professor of History

Lynn is a scholar of the history of the Enlightenment, especially in 18th century Paris, but he can also comment on French history, the history of Early Modern England, the Renaissance, the Reformation, history of science and the history of women (1400-1800). His dissertation (August 1997) studied "Enlightenment in the Republic of Science: The Popularization of Natural Philosophy in Eighteenth-Century Paris."

B.A.	Pacific Lutheran University
B.S.	Pacific Lutheran University
M.A.	University of Wisconsin-Madison
Ph.D.	University of Wisconsin-Madison

Homesickness

Ayse Ilgaz Carden

Professor of Psychology

A native of Turkey, Carden has researched the psychology of homesickness as well as the effects of cross-cultural experiences. She has been recognized by the Atlanta YMCA as a Woman of Achievement and has won numerous grants and honors.

B.A.	Agnes Scott College
M.S.	Emory University
Ph.D.	Emory University

Honesty

Sally MacEwen

Associate Professor of Classical Languages and Literatures

MacEwen has expanded her classics research to include the history of ideas (especially honesty, heroism and diversity), ancient women and female heroes in the movies. She is also one of Agnes Scott's leaders in multicultural issues and helps lead the College's chapter of the National Coalition Building Institute.

B.A.	Mount Holyoke College
Ph.D.	University of Pennsylvania

Honor Code

Gué P. Hudson

Vice President for Student Life and Community Relations and Dean of Students

As Agnes Scott's dean of students and vice president of community relations, Hudson stays in close contact with debates about student and enrollment issues as well as town/gown relations. She is well versed in the dynamics of the College's Honor System, considered one of the best functioning in the country. She has also taught mathematics in elementary, middle and secondary schools. She is especially interested in teaching young girls mathematics.

B.A. Agnes Scott College
M.A.T. Emory University

India

Penelope Campbell

Charles A. Dana Professor of History

Campbell is a historian of Sub-Saharan Africa, India, and Southeast Asia. She looks at politics and international tensions. She also studies environmental degradation and Vietnam since reunification. A native of Maryland, Campbell has researched extensively the interaction throughout history of that state with Africa. She has studied Christian evangelism in Africa and the development and underdevelopment of the continent.

B.A. Baylor University
M.A. The Ohio State University
Ph.D. The Ohio State University

International Relations

Feng Xu

Assistant Professor of Political Science

In the past three years, Xu's research has been on China's economic reform and women migrant workers in China. This year, she is teaching "Introduction to World Politics," "Issues in Global Migration," and "Approaches to International Relations." Her general academic interests are international relations, women's studies, Asian studies, migration studies, nationalism and transnationalism.

B.A. Beijing Foreign Languages Institute
M.A. York University
Ph.D. York University

Iran

Catherine V. Scott
Professor of Political Science

Scott has studied political systems in Africa and has also probed hostage crises and U.S. foreign policy (especially with Iran, Persian Gulf states and Somalia) and the gender gap in voting. She has also studied Hillary Rodham Clinton's role in the current administration, paying particular attention to her role in healthcare reform.

B.A.	University of Florida
M.A.	Emory University
Ph.D.	Emory University

Ireland

**History,
Literature**

Christine S. Cozzens
Associate Professor of English

Cozzens' research and writing interests include all aspects of writing and writing pedagogy, nonfiction as a genre of creative writing (the personal essay, the memoir), travel writing (history and current), journalism, 19th-century British literature (especially fiction), Irish history and literature (including contemporary topics), women and literature (especially women, literature and social change, war) and training teachers of secondary English.

B.A.	Stanford University
M.A.	Stanford University
Ph.D.	University of California, Berkeley

Linda L. Hubert
Professor of English

Hubert is a specialist in American literature with a noted interest in theatre. She has researched extensively Southern literature, especially Southern women playwrights, American realism and naturalism as well as contemporary drama. She also speaks to "anything Irish."

The author of Agnes Scott's first graduate program M.A.T. in Secondary English, she remains focused on the importance of training first rate English teachers.

B.A.	Agnes Scott College
M.A.	Emory University
Ph.D.	Emory University

Labor Law

Augustus B. Cochran, III

Professor of Political Science

Both a political scientist and a lawyer, Cochran specializes in labor law and labor law reform. He is interested in employee participation in management and issues of democracy at work. He also studies changing Southern politics and its influence on American democracy and the realignment of U.S. politics over the course of the last 30 years. Cochran has given talks on "How to Think Like a Lawyer" and "Rights at Work."

B.A.	Davidson College
M.A.	Indiana University
Ph.D.	University of North Carolina
J.D.	Georgia State University College of Law

Language Across the Curriculum

Ingrid Wieshofer

Professor of German

Awarded the Cross Of the Order of Merit of the Federal Republic of Germany, Wieshofer teaches German language and literature and is director of the College's Language Across the Curriculum Program. She is also well versed in foreign language pedagogy. Wieshofer is also winner of the 1997 Vulcan Materials Company Excellence in Teaching award.

Teacher's Diploma	University of Vienna
Ph.D.	University of Vienna

Latin American Studies

**African Diaspora,
Caribbean Civilization**

Gisela Norat

Associate Professor of Spanish

Norat teaches courses in Latin American and Caribbean civilizations and culture as well as the Spanish component of the class on the African Diaspora. Her dissertation focused on "Four Latin American Writers Liberating Taboo: Albalucia Angel, Marta Traba, Sylvia Malloy, Diamela Eltit." The dissertation examines the aesthetic inscription on non-canonical topic in contemporary women's narrative.

B.S.	St. Peter's College
B.A.	Montclair State College
M.A.	New York University, Madrid
Ph.D.	Washington University (St. Louis)

Church and Politics

Juan A. Allende

Associate Professor of Political Science

Allende is a specialist in the politics of Chile as well as of Latin American studies in general. He teaches Latin American Studies and politics, women in Latin America and U.S.-Latin Relations. He is also interested in the interaction of the church and politics in Latin America.

B.S.	Iowa State University
M.S.	University of North Carolina
M.Div.	Emory University
Ph.D.	University of North Carolina

Civilization

Gisela Norat

Associate Professor of Spanish

Norat teaches courses in Latin American and Caribbean civilizations and culture as well as the Spanish component of the class on the African Diaspora. Her dissertation focused on "Four Latin American Writers Liberating Taboo: Albalucia Angel, Marta Traba, Sylvia Malloy, Diamela Eltit." The dissertation examines the aesthetic inscription on non-canonical topic in contemporary women's narrative.

B.S.	St. Peter's College
B.A.	Montclair State College
M.A.	New York University, Madrid
Ph.D.	Washington University (St. Louis)

Cuban Literature

Rafael Ocasio

Associate Professor of Spanish

Ocasio is an expert in Latin American literature, especially Cuban literature. The literature of Latina women is also one of his interests. Additionally, Ocasio has studied contemporary Latin American politics.

B.A.	University of Puerto Rico
M.A.	Eastern New Mexico University
Ph.D.	University of Kentucky

Household Economics in Mexico, Immigrants and Latin America

Martha Rees

Associate Professor of Anthropology

Rees is a social anthropologist specializing in household economics in Mexico and among Mexican immigrants to the United States. She completed her dissertation in anthropology at the University of Colorado at Boulder on land tenure conflicts with the expansion of Mexico City into surrounding rural areas. She is also interested in women and science, gender/race and IQ, NAFTA and Atlanta's immigrants.

Rees has had support from the National Science Foundation and held a Fulbright lectureship. She won in 1998 a National Science Foundation grant to further her research. She has worked in Mexico for more than 15 years, working in the National University, the National Indigenist Institute, the Metropolitan University and the Center for Ecodevelopment. She carried out research in many areas of Mexico.

B.A.	University of Colorado
M.A.	University of Colorado
Ph.D.	University of Colorado

Latina Women, Literature

Rafael Ocasio

Associate Professor of Spanish

Ocasio is an expert in Latin American literature, especially Cuban literature. The literature of Latina women is also one of his interests. Additionally, Ocasio has studied contemporary Latin American politics.

B.A.	University of Puerto Rico
M.A.	Eastern New Mexico University
Ph.D.	University of Kentucky

Mexican-American Culture

Michael Schlig

Assistant Professor of Spanish

Schlig's expertise is in the literature of 18th, 19th, and early 20th century Spain. He has also taught Spanish civilization and Mexican American culture. His research focuses on literary aesthetics with a special interest in the mirror as a metaphor of artistic representation.

B.A.	Dickinson College
M.A.	Middlebury College

Ph.D. University of Texas at Austin

Mexican Migrants

Martha Rees

Associate Professor of Anthropology

Rees is a social anthropologist specializing in household economics in Mexico and among Mexican immigrants to the United States. She completed her dissertation in anthropology at the University of Colorado at Boulder on land tenure conflicts with the expansion of Mexico City into surrounding rural areas. She is also interested in women and science, gender/race and IQ, NAFTA and Atlanta's immigrants.

Rees has had support from the National Science Foundation and held a Fulbright lectureship. She won in 1998 a National Science Foundation grant to further her research. She has worked in Mexico for more than 15 years, working in the National University, the National Indigenist Institute, the Metropolitan University and the Center for Ecodevelopment. She carried out research in many areas of Mexico.

B.A. University of Colorado
M.A. University of Colorado
Ph.D. University of Colorado

Nicaragua

Robert A. Leslie

Associate Professor of Mathematics

Leslie's major academic interests are mathematics and its applications, particularly through differential equations and statistics. He is also interested in modern teaching methods, problem solving and epidemiology. He combines his mathematical knowledge with a passion for social activism in Central America, particularly Nicaragua. He has taught mathematics in Nicaragua and has been active for over 10 years with the Presbyterian Church (USA) partner organization there known as CEPAD, which has provided developmental assistance to the people of Nicaragua since 1972.

B.S. Davidson College
M.A. University of Georgia
Ph.D. University of Georgia

Politics

Juan A. Allende

Associate Professor of Political Science

Allende is a specialist in the politics of Chile as well as of Latin American studies in general. He teaches Latin American Studies and politics, women in Latin America and

U.S.-Latin Relations. He is also interested in the interaction of the church and politics in Latin America.

B.S.	Iowa State University
M.S.	University of North Carolina
M.Div.	Emory University
Ph.D.	University of North Carolina

Robert A. Leslie

Associate Professor of Mathematics

Leslie's major academic interests are mathematics and its applications, particularly through differential equations and statistics. He is also interested in modern teaching methods, problem solving and epidemiology. He combines his mathematical knowledge with a passion for social activism in Central America, particularly Nicaragua. He has taught mathematics in Nicaragua and has been active for over 10 years with the Presbyterian Church (USA) partner organization there known as CEPAD, which has provided developmental assistance to the people of Nicaragua since 1972.

B.S.	Davidson College
M.A.	University of Georgia
Ph.D.	University of Georgia

Rafael Ocasio

Associate Professor of Spanish

Ocasio is an expert in Latin American literature, especially Cuban literature. The literature of Latina women is also one of his interests. Additionally, Ocasio has studied contemporary Latin American politics.

B.A.	University of Puerto Rico
M.A.	Eastern New Mexico University
Ph.D.	University of Kentucky

Literature

19th century (American)

Willie Tolliver

Assistant Professor of English

An aficionado of 19th-century American literature and the work of Henry James, Tolliver is also well versed in African-American literature and film. While at Agnes Scott, he has taught African-American literature, African-American women novelists and 19th century American fiction.

B.A.	Williams College
M.A.	University of Chicago
Ph.D.	University of Chicago

19th century (British)

Christine S. Cozzens

Associate Professor of English

Cozzens' research and writing interests include all aspects of writing and writing pedagogy, nonfiction as a genre of creative writing (the personal essay, the memoir), travel writing (history and current), journalism, 19th-century British literature (especially fiction), Irish history and literature (including contemporary topics), women and literature (especially women, literature and social change, war) and training teachers of secondary English.

B.A.	Stanford University
M.A.	Stanford University
Ph.D.	University of California, Berkeley

20th century

Christopher Ames

Professor of English

Ames' research areas include 20th century fiction and narrative theory, contemporary literature and postmodernism, Hollywood and independent film and culture. His film work includes a special focus on self-referentiality in films (i.e., movies about movies) and the cultural significance of Hollywood in the American imagination.

B.A.	University of Texas, Austin
Ph.D.	Stanford University

African-American

Willie Tolliver

Assistant Professor of English

An aficionado of 19th-century American literature and the work of Henry James, Tolliver is also well versed in African-American literature and film. While at Agnes Scott, he has taught African-American literature, African-American women novelists and 19th century American fiction.

B.A.	Williams College
M.A.	University of Chicago
Ph.D.	University of Chicago

American Realism and Naturalism

Linda L. Hubert

Professor of English

Hubert is a specialist in American literature with a noted interest in theatre. She has researched extensively Southern literature, especially Southern women playwrights,

American realism and naturalism as well as contemporary drama. She also speaks to "anything Irish."

The author of Agnes Scott's first graduate program M.A.T. in Secondary English, she remains focused on the importance of training first rate English teachers.

B.A.	Agnes Scott College
M.A.	Emory University
Ph.D.	Emory University

Comedy and Tragedy

Peggy Thompson

Associate Professor of English

Thompson teaches and writes about Restoration and 18th-century literature. She has also published on the theoretical relationships between comedy and Christianity. She is also a winner of the Vulcan Materials Company Teaching Excellence Award.

B.A.	Arizona State University
M.A. (Philosophy)	Emory University
M.A. (Humanities)	Arizona State University
M.A. (English)	Indiana University
Ph.D.	Indiana University

Contemporary Drama

Linda L. Hubert

Professor of English

Hubert is a specialist in American literature with a noted interest in theatre. She has researched extensively Southern literature, especially Southern women playwrights, American realism and naturalism as well as contemporary drama. She also speaks to "anything Irish."

The author of Agnes Scott's first graduate program M.A.T. in Secondary English, she remains focused on the importance of training first rate English teachers.

B.A.	Agnes Scott College
M.A.	Emory University
Ph.D.	Emory University

Cuban

Rafael Ocasio

Associate Professor of Spanish

Ocasio is an expert in Latin American literature, especially Cuban literature. The literature of Latina women is also one of his interests. Additionally, Ocasio has studied contemporary Latin American politics.

B.A.	University of Puerto Rico
M.A.	Eastern New Mexico University
Ph.D.	University of Kentucky

English Renaissance

Patricia G. Pinka

Professor of English

Pinka's expertise sits on two ends of the literary spectrum - English Renaissance literature, the epic John Milton and John Donne, to movie musicals. She is the author of a book on Donne and numerous papers on Donne, Bacon, Ben Jonson and Milton and has received grants, served as a participant with numerous seminars.

B.A.	University of Pittsburgh
M.A.	San Francisco State College
Ph.D.	University of Pittsburgh

French

Julia K. De Pree

Assistant Professor of French

De Pree's area of research is eighteenth-century French literature. In 1998, she published a book on the concept of epistolary lyric (UNC Press). In addition to her study in the United States, she has studied at the Sorbonne, at the Institut d'études françaises d'Avignon, and at Oxford University.

B.A.	Duke University
M.A.	University of North Carolina
Ph.D.	University of North Carolina

David Rollo

Adeline Arnold Loridans Professor of French

A Cambridge University graduate, Rollo specializes in 12th century French literature. He has published many articles and last year a book, *Historical Fabrication, Ethnic History and French Romance in Twelfth Century England*.

B.A.	Emmanuel College, Cambridge University
------	--

M.A. Emmanuel College, Cambridge University
Ph.D. Princeton University

German

Ingrid Wieshofer
Professor of German

Awarded the Cross Of the Order of Merit of the Federal Republic of Germany, Wieshofer teaches German language and literature and is director of the College's Language Across the Curriculum Program. She is also well versed in foreign language pedagogy. Wieshofer is also winner of the 1997 Vulcan Materials Company Excellence in Teaching award.

Teacher's Diploma University of Vienna
Ph.D. University of Vienna

Irish

Christine S. Cozzens
Associate Professor of English

Cozzens' research and writing interests include all aspects of writing and writing pedagogy, nonfiction as a genre of creative writing (the personal essay, the memoir), travel writing (history and current), journalism, 19th-century British literature (especially fiction), Irish history and literature (including contemporary topics), women and literature (especially women, literature and social change, war) and training teachers of secondary English.

B.A. Stanford University
M.A. Stanford University
Ph.D. University of California, Berkeley

Linda L. Hubert
Professor of English

Hubert is a specialist in American literature with a noted interest in theatre. She has researched extensively Southern literature, especially Southern women playwrights, American realism and naturalism as well as contemporary drama. She also speaks to "anything Irish."

The author of Agnes Scott's first graduate program M.A.T. in Secondary English, she remains focused on the importance of training first rate English teachers.

B.A. Agnes Scott College
M.A. Emory University
Ph.D. Emory University

Latin American

Rafael Ocasio

Associate Professor of Spanish

Ocasio is an expert in Latin American literature, especially Cuban literature. The literature of Latina women is also one of his interests. Additionally, Ocasio has studied contemporary Latin American politics.

B.A.	University of Puerto Rico
M.A.	Eastern New Mexico University
Ph.D.	University of Kentucky

Michael Schlig

Assistant Professor of Spanish

Schlig's expertise is in the literature of 18th, 19th, and early 20th century Spain. He has also taught Spanish civilization and Mexican American culture. His research focuses on literary aesthetics with a special interest in the mirror as a metaphor of artistic representation.

B.A.	Dickinson College
M.A.	Middlebury College
Ph.D.	University of Texas at Austin

Medieval

Steven R. Guthrie

Associate Professor of English

Guthrie teaches medieval literature, the history of English, and poetry writing. He publishes in the areas of historical linguistics and medieval English and continental poetry and poetics; he is the world's leading authority on Chaucer's poetic meter.

B.A.	Antioch College
Ph.D.	Brown University

Post-Colonial

Waqas Khwaja

Visiting Assistant Professor of English

Khwaja specializes in Victorian and Romantic literature and has also included Postcolonial literature in his courses. He has published critical articles on English, Postcolonial, Urdu, and Punjabi writers and texts and has edited two anthologies of Pakistani literature, translating fiction and poetry from Urdu and Punjabi into English. He has also written two volumes of original poetry and a literary travelogue. A native of Pakistan, where he was a practicing lawyer, professor of law, and a regular columnist for the national papers, Khwaja has been interviewed about current events and affairs in his native country.

B.A. Government College, Lahore, Pakistan
LL.B. Punjab University Law College, Lahore
M.A. University of the Punjab
M.A. Emory University
Ph.D. Emory University

Postmodern

Christopher Ames Professor of English

Ames' research areas include 20th century fiction and narrative theory, contemporary literature and postmodernism, Hollywood and independent film and culture. His film work includes a special focus on self-referentiality in films (i.e., movies about movies) and the cultural significance of Hollywood in the American imagination.

B.A. University of Texas, Austin
Ph.D. Stanford University

Punjabi

Waqas Khwaja Visiting Assistant Professor of English

Khwaja specializes in Victorian and Romantic literature and has also included Postcolonial literature in his courses. He has published critical articles on English, Postcolonial, Urdu, and Punjabi writers and texts and has edited two anthologies of Pakistani literature, translating fiction and poetry from Urdu and Punjabi into English. He has also written two volumes of original poetry and a literary travelogue. A native of Pakistan, where he was a practicing lawyer, professor of law, and a regular columnist for the national papers, Khwaja has been interviewed about current events and affairs in his native country.

B.A. Government College, Lahore, Pakistan
LL.B. Punjab University Law College, Lahore
M.A. University of the Punjab
M.A. Emory University
Ph.D. Emory University

Restoration

Peggy Thompson Associate Professor of English

Thompson teaches and writes about Restoration and 18th-century literature. She has also published on the theoretical relationships between comedy and Christianity. She is also a winner of the Vulcan Materials Company Teaching Excellence Award.

B.A.	Arizona State University
M.A. (Philosophy)	Emory University
M.A. (Humanities)	Arizona State University
M.A. (English)	Indiana University
Ph.D.	Indiana University

Romantic

Waqas Khwaja

Visiting Assistant Professor of English

Khwaja specializes in Victorian and Romantic literature and has also included Postcolonial literature in his courses. He has published critical articles on English, Postcolonial, Urdu, and Punjabi writers and texts and has edited two anthologies of Pakistani literature, translating fiction and poetry from Urdu and Punjabi into English. He has also written two volumes of original poetry and a literary travelogue. A native of Pakistan, where he was a practicing lawyer, professor of law, and a regular columnist for the national papers, Khwaja has been interviewed about current events and affairs in his native country.

B.A.	Government College, Lahore, Pakistan
LL.B.	Punjab University Law College, Lahore
M.A.	University of the Punjab
M.A.	Emory University
Ph.D.	Emory University

Shakespeare

Bona W. Ball

Ellen Douglas Leyburn Professor of English

Ball, a Shakespearean scholar, has been a primary force behind Agnes Scott's Writers' Festival since its inception more than 25 years ago. In addition to teaching literature, Ball is the College's fiction writing specialist; he is the winner of three Pushcart Prizes.

B.A.	University of Virginia
M.A.T.	Duke University
Ph.D.	University of Kentucky

Southern

Linda L. Hubert

Professor of English

Hubert is a specialist in American literature with a noted interest in theatre. She has researched extensively Southern literature, especially Southern women playwrights, American realism and naturalism as well as contemporary drama. She also speaks to "anything Irish."

The author of Agnes Scott's first graduate program M.A.T. in Secondary English, she remains focused on the importance of training first rate English teachers.

B.A. Agnes Scott College
M.A. Emory University
Ph.D. Emory University

Spanish

Michael Schlig

Assistant Professor of Spanish

Schlig's expertise is in the literature of 18th, 19th, and early 20th century Spain. He has also taught Spanish civilization and Mexican American culture. His research focuses on literary aesthetics with a special interest in the mirror as a metaphor of artistic representation.

B.A. Dickinson College
M.A. Middlebury College
Ph.D. University of Texas at Austin

Urdu, Victorian

Waqas Khwaja

Visiting Assistant Professor of English

Khwaja specializes in Victorian and Romantic literature and has also included Postcolonial literature in his courses. He has published critical articles on English, Postcolonial, Urdu, and Punjabi writers and texts and has edited two anthologies of Pakistani literature, translating fiction and poetry from Urdu and Punjabi into English. He has also written two volumes of original poetry and a literary travelogue. A native of Pakistan, where he was a practicing lawyer, professor of law, and a regular columnist for the national papers, Khwaja has been interviewed about current events and affairs in his native country.

B.A. Government College, Lahore, Pakistan
LL.B. Punjab University Law College, Lahore
M.A. University of the Punjab
M.A. Emory University
Ph.D. Emory University

Lyme Disease

Douglas Kain

Visiting Assistant Professor of Biology

Kain's general research interests focus on evolutionary biology, coevolution of disease and arthropod vectors and molecular systematics. His research concentrates on the

evolutionary biology of Lyme disease and more specifically on the population genetic structure and biogeography of the tick that vectors Lyme disease. He also studies the systematics of ticks.

B.A. University of California (Berkeley)
M.A. Humboldt State University
Ph.D. University of California (Berkeley)

Mathematics

Robert A. Leslie

Associate Professor of Mathematics

Leslie's major academic interests are mathematics and its applications, particularly through differential equations and statistics. He is also interested in modern teaching methods, problem solving and epidemiology. He combines his mathematical knowledge with a passion for social activism in Central America, particularly Nicaragua. He has taught mathematics in Nicaragua and has been active for over 10 years with the Presbyterian Church (USA) partner organization there known as CEPAD, which has provided developmental assistance to the people of Nicaragua since 1972.

B.S. Davidson College
M.A. University of Georgia
Ph.D. University of Georgia

Lawrence H. Riddle

Associate Professor of Mathematics

Riddle and his math students have created a web site on women mathematicians, the most extensive of its kind (www.agnesscott.edu/lriddle/women/women.htm). Riddle, who has been interviewed on National Public Radio's *51 Percent* and whose web site has been featured in several articles, is also an excellent source on the use of technology in the classroom.

B.S. Carnegie-Mellon University
M.S. University of Illinois
Ph.D. University of Illinois

Algebra

Olga Yiparaki

Assistant Professor of Mathematics

Yiparaki is an expert in a variety of mathematical applications, including algebra, multivariable calculus and topography. Her research interests include combinatorial set theory, Ramsey theory, logic, cardinal characteristics of the continuum, graph theory and undergraduate mathematics education.

B.A. College of Wooster

Ph.D. University of Michigan

Algorithms, Combinatorial

David Robinson

Visiting Assistant Professor of Mathematics

Robinson is a specialist in combinatorial mathematics. The applications of his research help computer science by improving operating systems. He also works with algorithms and with other scholars to design statistical experiments.

B.A. Colorado College

Ph.D. Emory University

Gender Issues in Math Education

Myrtle H. Lewin

Professor of Mathematics

Lewin teaches and studies mathematics, the learning and teaching of mathematics and gender issues in mathematics education. She has an interest in abstract geometries and the relationship between learning theories (such as social constructivism) and teaching methodologies (such as collaborative learning).

B.Sc. University of the Witwatersrand, Johannesburg

B.Sc.Hons University of the Witwatersrand, Johannesburg

M.A. University of Wisconsin

Ph.D. University of Wisconsin

Multivariable Calculus

Olga Yiparaki

Assistant Professor of Mathematics

Yiparaki is an expert in a variety of mathematical applications, including algebra, multivariable calculus and topography. Her research interests include combinatorial set theory, Ramsey theory, logic, cardinal characteristics of the continuum, graph theory and undergraduate mathematics education.

B.A. College of Wooster

Ph.D. University of Michigan

Pedagogy

Myrtle H. Lewin

Professor of Mathematics

Lewin teaches and studies mathematics, the learning and teaching of mathematics and gender issues in mathematics education. She has an interest in abstract geometries and

the relationship between learning theories (such as social constructivism) and teaching methodologies (such as collaborative learning).

B.Sc.	University of the Witwatersrand, Johannesburg
B.Sc.Hons	University of the Witwatersrand, Johannesburg
M.A.	University of Wisconsin
Ph.D.	University of Wisconsin

Statistics

David Robinson

Visiting Assistant Professor of Mathematics

Robinson is a specialist in combinatorial mathematics. The applications of his research help computer science by improving operating systems. He also works with algorithms and with other scholars to design statistical experiments.

B.A.	Colorado College
Ph.D.	Emory University

Topography

Olga Yiparaki

Assistant Professor of Mathematics

Yiparaki is an expert in a variety of mathematical applications, including algebra, multivariable calculus and topography. Her research interests include combinatorial set theory, Ramsey theory, logic, cardinal characteristics of the continuum, graph theory and undergraduate mathematics education.

B.A.	College of Wooster
Ph.D.	University of Michigan

Women Mathematicians

Lawrence H. Riddle

Associate Professor of Mathematics

Riddle and his math students have created a web site on women mathematicians, the most extensive of its kind (www.agnesscott.edu/lriddle/women/women.htm). Riddle, who has been interviewed on National Public Radio's *'s 51 Percent* and whose web site has been featured in several articles, is also an excellent source on the use of technology in the classroom.

B.S.	Carnegie-Mellon University
M.S.	University of Illinois
Ph.D.	University of Illinois

Mentoring Teachers

Kathy Froelich

Visiting Assistant Professor of Education

Froelich is currently working with Agnes Scott's Master of Arts in Teaching Secondary English (MAT) students, helping them to build a solid knowledge base concerning the teaching of reading to students in high school. She also looks at ESOL students learning to read in the English classroom. Her research is currently focused on mentoring first and second year teachers as they learn the "ropes" of the classroom. Froelich also works with school districts across the country developing and implementing in-service programs for grades K-8.

B.S.	Florida State University (Language, Literacy and Learning)
B.S.	Florida State University (Speech Pathology/Audiology)
M.S.	Florida State University
Ph.D.	Fordham University

Mexico

Mexican-American Culture

Michael Schlig

Assistant Professor of Spanish

Schlig's expertise is in the literature of 18th, 19th, and early 20th century Spain. He has also taught Spanish civilization and Mexican American culture. His research focuses on literary aesthetics with a special interest in the mirror as a metaphor of artistic representation.

B.A.	Dickinson College
M.A.	Middlebury College
Ph.D.	University of Texas at Austin

Mexican Migrants

Martha Rees

Associate Professor of Anthropology

Rees is a social anthropologist specializing in household economics in Mexico and among Mexican immigrants to the United States. She completed her dissertation in anthropology at the University of Colorado at Boulder on land tenure conflicts with the expansion of Mexico City into surrounding rural areas. She is also interested in women and science, gender/race and IQ, NAFTA and Atlanta's immigrants.

Rees has had support from the National Science Foundation and held a Fulbright lectureship. She won in 1998 a National Science Foundation grant to further her

research. She has worked in Mexico for more than 15 years, working in the National University, the National Indigenist Institute, the Metropolitan University and the Center for Ecodevelopment. She carried out research in many areas of Mexico.

B.A.	University of Colorado
M.A.	University of Colorado
Ph.D.	University of Colorado

Millennium/Apocalypse

Tina Pippin

Associate Professor of Religious Studies

Pippin's research is in religion and culture (cultural studies). Primarily, she reads biblical texts in their postmodern contexts, especially apocalyptic literature and cultures. She is the author of *Death and Desire: The Rhetoric of Gender in the Apocalypse of John* (Westminster/John Knox, 1992), one of the co-authors of *The Postmodern Bible* (Yale University Press, 1995), author of the forthcoming (Feb. 1999) *Apocalyptic Bodies: The Biblical End of the World in Text and Image* (Routledge Press) and editor of several volumes of the Bible and the literary fantastic.

Pippin also teaches and writes in women's studies and is one of the co-founders of Creating Links Among Activist Scholars and People, CLAASP, an activist educator group.

B.A.	Mars Hill College
M.Div.	Candler School of Theology
M.Th.	Southern Baptist Theological Seminary
Ph.D.	Southern Baptist Theological Seminary

Music

Appreciation

Theodore K. Mathews

Professor of Music

Mathews began his career as a music professor with a Ph.D. in musicology; his dissertation focused on the masses of Anton Bruckner. At Agnes Scott, he teaches music appreciation, music theory and the history of western and American music. He is also interested in the history of American jazz, world music, choral methods and music education.

A.B.	Brown University
A.M.T.	Harvard University
Ph.D.	University of Michigan

Baroque

Ronald L. Byrnside

Charles A. Dana Professor of Music

A former professional music arranger, Byrnside teaches the history of music and has taught courses at Agnes Scott ranging from music appreciation to music of the baroque and classical eras and everything in between. Currently, he is working on his fifth book about music in Antebellum Georgia (University of Georgia Press).

B.A.	University of Cincinnati
M.A.	Yale University
Ph.D.	University of Illinois

Choral Methods

Theodore K. Mathews

Professor of Music

Mathews began his career as a music professor with a Ph.D. in musicology; his dissertation focused on the masses of Anton Bruckner. At Agnes Scott, he teaches music appreciation, music theory and the history of western and American music. He is also interested in the history of American jazz, world music, choral methods and music education.

A.B.	Brown University
A.M.T.	Harvard University
Ph.D.	University of Michigan

Lyn Schenbeck

Visiting Associate Professor of Music

Schenbeck is a music educator, music therapist and also sits on the Atlanta Board of Governors of the National Academy of Recording Arts & Sciences (the Grammy people). She teaches voice and conducts the ASC Orchestra, Collegiate Chorale and Chamber Choir. Her research specialization is Italian and French secular Renaissance vocal music.

B.S.	State University College, Potsdam, NY
M.S.	State University College, Potsdam, NY
D.M.A.	University of Colorado, Boulder

Classical

Ronald L. Byrnside

Charles A. Dana Professor of Music

A former professional music arranger, Byrnside teaches the history of music and has

taught courses at Agnes Scott ranging from music appreciation to music of the baroque and classical eras and everything in between. Currently, he is working on his fifth book about music in Antebellum Georgia (University of Georgia Press).

B.A.	University of Cincinnati
M.A.	Yale University
Ph.D.	University of Illinois

Early Keyboard

Calvert Johnson
Professor of Music

Early keyboard music is Johnson's specialty, especially that of Spain, Italy and England. He has widely performed and lectured on early keyboard music and its performance practices at colleges and for numerous chapters of the American Guild of Organists. His other interest is keyboard music by women composers. He has performed concerts of this repertoire throughout the country and is currently engaged in research on 18th century keyboard music by English and French women.

B.A.	Kalamazoo College
M.M.	Northwestern University
D.M.	Northwestern University

Education

Theodore K. Mathews
Professor of Music

Mathews began his career as a music professor with a Ph.D. in musicology; his dissertation focused on the masses of Anton Bruckner. At Agnes Scott, he teaches music appreciation, music theory and the history of western and American music. He is also interested in the history of American jazz, world music, choral methods and music education.

A.B.	Brown University
A.M.T.	Harvard University
Ph.D.	University of Michigan

History

Ronald L. Byrnside
Charles A. Dana Professor of Music

A former professional music arranger, Byrnside teaches the history of music and has taught courses at Agnes Scott ranging from music appreciation to music of the baroque and classical eras and everything in between. Currently, he is working on his fifth book about music in Antebellum Georgia (University of Georgia Press).

B.A. University of Cincinnati
M.A. Yale University
Ph.D. University of Illinois

Theodore K. Mathews
Professor of Music

Mathews began his career as a music professor with a Ph.D. in musicology; his dissertation focused on the masses of Anton Bruckner. At Agnes Scott, he teaches music appreciation, music theory and the history of western and American music. He is also interested in the history of American jazz, world music, choral methods and music education.

A.B. Brown University
A.M.T. Harvard University
Ph.D. University of Michigan

Industry

Lyn Schenbeck
Visiting Associate Professor of Music

Schenbeck is a music educator, music therapist and also sits on the Atlanta Board of Governors of the National Academy of Recording Arts & Sciences (the Grammy people). She teaches voice and conducts the ASC Orchestra, Collegiate Chorale and Chamber Choir. Her research specialization is Italian and French secular Renaissance vocal music.

B.S. State University College, Potsdam, NY
M.S. State University College, Potsdam, NY
D.M.A. University of Colorado, Boulder

Jazz

Theodore K. Mathews
Professor of Music

Mathews began his career as a music professor with a Ph.D. in musicology; his dissertation focused on the masses of Anton Bruckner. At Agnes Scott, he teaches music appreciation, music theory and the history of western and American music. He is also interested in the history of American jazz, world music, choral methods and music education.

A.B. Brown University
A.M.T. Harvard University
Ph.D. University of Michigan

Therapy

Lyn Schenbeck

Visiting Associate Professor of Music

Schenbeck is a music educator, music therapist and also sits on the Atlanta Board of Governors of the National Academy of Recording Arts & Sciences (the Grammy people). She teaches voice and conducts the ASC Orchestra, Collegiate Chorale and Chamber Choir. Her research specialization is Italian and French secular Renaissance vocal music.

B.S.	State University College, Potsdam, NY
M.S.	State University College, Potsdam, NY
D.M.A.	University of Colorado, Boulder

Women Composers

Calvert Johnson

Professor of Music

Early keyboard music is Johnson's specialty, especially that of Spain, Italy and England. He has widely performed and lectured on early keyboard music and its performance practices at colleges and for numerous chapters of the American Guild of Organists. His other interest is keyboard music by women composers. He has performed concerts of this repertoire throughout the country and is currently engaged in research on 18th century keyboard music by English and French women.

B.A.	Kalamazoo College
M.M.	Northwestern University
D.M.	Northwestern University

World Music

Theodore K. Mathews

Professor of Music

Mathews began his career as a music professor with a Ph.D. in musicology; his dissertation focused on the masses of Anton Bruckner. At Agnes Scott, he teaches music appreciation, music theory and the history of western and American music. He is also interested in the history of American jazz, world music, choral methods and music education.

A.B.	Brown University
A.M.T.	Harvard University
Ph.D.	University of Michigan

NAFTA

Martha Rees

Associate Professor of Anthropology

Rees is a social anthropologist specializing in household economics in Mexico and among Mexican immigrants to the United States. She completed her dissertation in anthropology at the University of Colorado at Boulder on land tenure conflicts with the expansion of Mexico City into surrounding rural areas. She is also interested in women and science, gender/race and IQ, NAFTA and Atlanta's immigrants.

Rees has had support from the National Science Foundation and held a Fulbright lectureship. She won in 1998 a National Science Foundation grant to further her research. She has worked in Mexico for more than 15 years, working in the National University, the National Indigenist Institute, the Metropolitan University and the Center for Ecodevelopment. She carried out research in many areas of Mexico.

B.A.	University of Colorado
M.A.	University of Colorado
Ph.D.	University of Colorado

NCAA

A. Page Remillard

Director of Athletics

With more than 20 years experience as a coach and administrator at NCAA division III schools, Remillard is a former member of NCAA rules committees (water polo and swimming) and NCAA women's softball championship committee. He has also coached extensively, including U.S. Olympic Festival water polo teams. He is available to comment on collegiate, Olympic and professional sports, gender equity, Title IX, personal fitness and "Men's Roles in Women's Athletics."

B.S.	California State Polytechnic University, Pomona
M.A.	University of La Verne

Nationalism

Feng Xu

Assistant Professor of Political Science

In the past three years, Xu's research has been on China's economic reform and women migrant workers in China. This year, she is teaching "Introduction to World Politics," "Issues in Global Migration," and "Approaches to International Relations." Her general academic interests are international relations, women's studies, Asian studies, migration studies, nationalism and transnationalism.

B.A. Beijing Foreign Languages Institute
M.A. York University
Ph.D. York University

Nicaragua

Robert A. Leslie

Associate Professor of Mathematics

Leslie's major academic interests are mathematics and its applications, particularly through differential equations and statistics. He is also interested in modern teaching methods, problem solving and epidemiology. He combines his mathematical knowledge with a passion for social activism in Central America, particularly Nicaragua. He has taught mathematics in Nicaragua and has been active for over 10 years with the Presbyterian Church (USA) partner organization there known as CEPAD, which has provided developmental assistance to the people of Nicaragua since 1972.

B.S. Davidson College
M.A. University of Georgia
Ph.D. University of Georgia

Nuclear Arms

Control, Technology

Arthur L. Bowling, Jr.
Associate Professor of Physics

A valedictorian of the College of William and Mary, Bowling's research interests include study of the theory of elementary particles, especially as applied to the very early universe, nuclear arms technology and control and atmospheric physics. Currently, Bowling is studying LIDAR with researchers at Georgia Tech.

B.S. College of William and Mary
M.S. University of Illinois, Urbana
Ph.D. University of Illinois, Urbana

Pakistan

Waqas Khwaja
Visiting Assistant Professor of English

Khwaja specializes in Victorian and Romantic literature and has also included Postcolonial literature in his courses. He has published critical articles on English, Postcolonial, Urdu, and Punjabi writers and texts and has edited two anthologies of Pakistani literature, translating fiction and poetry from Urdu and Punjabi into English. He has also written two volumes of original poetry and a literary travelogue. A native of Pakistan, where he was a practicing lawyer, professor of law, and a regular columnist for the national papers, Khwaja has been interviewed about current events and affairs in his native country.

B.A.	Government College, Lahore, Pakistan
LL.B.	Punjab University Law College, Lahore
M.A.	University of the Punjab
M.A.	Emory University
Ph.D.	Emory University

Persian Gulf

Catherine V. Scott
Professor of Political Science

Scott has studied political systems in Africa and has also probed hostage crises and U.S. foreign policy (especially with Iran, Persian Gulf states and Somalia) and the gender gap in voting. She has also studied Hillary Rodham Clinton's role in the current administration, paying particular attention to her role in health care reform.

B.A.	University of Florida
M.A.	Emory University
Ph.D.	Emory University

Personal Identity, Problem of

David P. Behan
Professor of Philosophy

Behan's historical interests include work on 17th and 18th century philosophers such as Descartes, Locke and Hume. He also studies philosophic problems such as the concept of self and personal identity. A recipient of many honors and grants, Behan has served as both president and vice president of the Georgia Philosophical Society.

B.A.	Yale University
Ph.D.	Vanderbilt University

Pharmaceuticals, Site-Specific

Leon Venable
Associate Professor of Chemistry

Venable, an inorganic chemist, has studied the synthesis and characterization of new and novel (arene)ruthenium-boron clusters. These molecules have far ranging potential applications from molecular wires to site-specific pharmaceuticals. Also, Venable is engaged in studies of the fundamental interactions between discrete amino acids and copper, a mineral essential to the human diet.

B.S. Davidson College
Ph.D. University of Virginia

Philosophy

17th century,
18th century,
Descartes

David P. Behan
Professor of Philosophy

Behan's historical interests include work on 17th and 18th century philosophers such as Descartes, Locke and Hume. He also studies philosophic problems such as the concept of self and personal identity. A recipient of many honors and grants, Behan has served as both president and vice president of the Georgia Philosophical Society.

B.A. Yale University
Ph.D. Vanderbilt University

Of the Enlightenment

Michael R. Lynn
Assistant Professor of History

Lynn is a scholar of the history of the Enlightenment, especially in 18th century Paris, but he can also comment on French history, the history of Early Modern England, the Renaissance, the Reformation, history of science and the history of women (1400-1800). His dissertation (August 1997) studied "Enlightenment in the Republic of Science: The Popularization of Natural Philosophy in Eighteenth-Century Paris."

B.A. Pacific Lutheran University
B.S. Pacific Lutheran University
M.A. University of Wisconsin-Madison
Ph.D. University of Wisconsin-Madison

Greek

Richard Parry
Fuller E. Callaway Professor of Philosophy

Parry's area of research is ancient Greek philosophy, in particular Plato's moral theory. In his book, *Craft of Justice* (SUNY, 1996). Parry defends the claim that Plato conceived of the virtues along the lines of craft, a position that has important contemporary implications.

Parry has directed workshops and seminars, which show the relations between ancient Greek accounts of virtue and contemporary character education.

Some educators, in primary and secondary schools, have turned again to virtue ethics, but they call it character education. This training is presented as an accomplishment like athletic training, except in virtue one trains the soul to perform well. Character education has caught on with many state boards of education. For instance, Georgia has adopted a list of virtues that should be inculcated in our school children.

Parry has written about the ethics of physician-assisted suicide, the death penalty, war and nuclear deterrence.

B.A.	Georgetown University
M.A.	Yale University
Ph.D.	University of North Carolina

**Hume,
Locke**

David P. Behan
Professor of Philosophy

Behan's historical interests include work on 17th and 18th century philosophers such as Descartes, Locke and Hume. He also studies philosophic problems such as the concept of self and personal identity. A recipient of many honors and grants, Behan has served as both president and vice president of the Georgia Philosophical Society.

B.A.	Yale University
Ph.D.	Vanderbilt University

Plato

Richard Parry
Fuller E. Callaway Professor of Philosophy

Parry's area of research is ancient Greek philosophy, in particular Plato's moral theory. In his book, *Craft of Justice* (SUNY, 1996). Parry defends the claim that Plato conceived of the virtues along the lines of craft, a position that has important contemporary implications.

Parry has directed workshops and seminars, which show the relations between ancient Greek accounts of virtue and contemporary character education.

Some educators, in primary and secondary schools, have turned again to virtue ethics, but they call it character education. This training is presented as an accomplishment like athletic training, except in virtue one trains the soul to perform well. Character education has caught on with many state boards of education. For instance, Georgia has adopted a list of virtues that should be inculcated in our school children.

Parry has written about the ethics of physician-assisted suicide, the death penalty, war and nuclear deterrence.

B.A.	Georgetown University
M.A.	Yale University
Ph.D.	University of North Carolina

Physics

Atmospheric, Elementary Particle Theory

Arthur L. Bowling, Jr.

Associate Professor of Physics

A valedictorian of the College of William and Mary, Bowling's research interests include study of the theory of elementary particles, especially as applied to the very early universe, nuclear arms technology and control and atmospheric physics. Currently, Bowling is studying LIDAR with researchers at Georgia Tech.

B.S.	College of William and Mary
M.S.	University of Illinois, Urbana
Ph.D.	University of Illinois, Urbana

Psychology

Abnormal, Assessment

Eileen L. Cooley

Associate Professor of Psychology

Trained in clinical psychology, Cooley teaches abnormal psychology, psychological assessment, research in clinical psychology and life span development.

B.A.	University of Colorado
M.S.	University of Oregon
M.A.	Emory University
Ph.D.	Emory University

Child Brain Development, Stimulation, Children's Emotional Intelligence, Children's Social Development

David P. Cornell

Visiting Assistant Professor of Psychology

Television violence, especially its affects on children, children's emotional intelligence and early child brain development and stimulation are among Cornell's specialties. In the past, he has given workshops to day care centers on brain development, emotional intelligence and television violence. He also has interests in the area of personality, emotions and health.

B.S.	Eastern Kentucky University
M.S.	University of Georgia
Ph.D.	University of Georgia

Clinical

Eileen L. Cooley

Associate Professor of Psychology

Trained in clinical psychology, Cooley teaches abnormal psychology, psychological assessment, research in clinical psychology and life span development.

B.A.	University of Colorado
M.S.	University of Oregon
M.A.	Emory University
Ph.D.	Emory University

Depression

Barbara J. Blatchley

Associate Professor of Psychology

As a researcher, Blatchley has worked with rats, studying the affects of environment on their levels of depression.

B.A.	Indiana University
Ph.D.	University of South Carolina

Dual-Career Couples

Jennifer Lucas

Assistant Professor of Psychology

Lucas specializes in Industrial/Organizational Psychology and has researched work-family

issues. Her current research is centered on dual-career couples. She recently completed a project that examined the types of dual-career couples.

B.S.	Auburn University
M.S.	Kansas State University
Ph.D.	Kansas State University

Homesickness

Ayse Ilgaz Carden

Professor of Psychology

A native of Turkey, Carden has researched the psychology of homesickness as well as the effects of cross-cultural experiences. She has been recognized by the Atlanta YMCA as a Woman of Achievement and has won numerous grants and honors.

B.A.	Agnes Scott College
M.S.	Emory University
Ph.D.	Emory University

Industrial/Organizational

Jennifer Lucas

Assistant Professor of Psychology

Lucas specializes in Industrial/Organizational Psychology and has researched work-family issues. Her current research is centered on dual-career couples. She recently completed a project that examined the types of dual-career couples.

B.S.	Auburn University
M.S.	Kansas State University
Ph.D.	Kansas State University

Life Span Development

Eileen L. Cooley

Associate Professor of Psychology

Trained in clinical psychology, Cooley teaches abnormal psychology, psychological assessment, research in clinical psychology and life span development.

B.A.	University of Colorado
M.S.	University of Oregon
M.A.	Emory University
Ph.D.	Emory University

Work/Family Issues

Jennifer Lucas

Assistant Professor of Psychology

Lucas specializes in Industrial/Organizational Psychology and has researched work-family issues. Her current research is centered on dual-career couples. She recently completed a project that examined the types of dual-career couples.

B.S.	Auburn University
M.S.	Kansas State University
Ph.D.	Kansas State University

Religion

Tina Pippin

Associate Professor of Religious Studies

Pippin's research is in religion and culture (cultural studies). Primarily, she reads biblical texts in their postmodern contexts, especially apocalyptic literature and cultures. She is the author of *Death and Desire: The Rhetoric of Gender in the Apocalypse of John* (Westminster/John Knox, 1992), one of the co-authors of *The Postmodern Bible* (Yale University Press, 1995), author of the forthcoming (Feb. 1999) *Apocalyptic Bodies: The Biblical End of the World in Text and Image* (Routledge Press) and editor of several volumes of the Bible and the literary fantastic.

Pippin also teaches and writes in women's studies and is one of the co-founders of Creating Links Among Activist Scholars and People, CLAASP, an activist educator group.

B.A.	Mars Hill College
M.Div.	Candler School of Theology
M.Th.	Southern Baptist Theological Seminary
Ph.D.	Southern Baptist Theological Seminary

Roman History

James C. Abbot, Jr.

Visiting Assistant Professor of Classical Languages and Literatures

Abbot's expertise is Roman History, particularly the areas of cultural and intellectual history. His dissertation, under revision for possible publication, is a study in ethics entitled *Roman Deceit*. In it, he explores changing social attitudes regarding deceptive practices in the period of the late Roman republic and early imperial era.

A.B.	Princeton University
Ed.M.	Harvard University
Ph.D.	University of North Carolina

Sierra Leone

Violet M. Johnson

Associate Professor of History

A native of Sierra Leone, Africa, Johnson has researched immigrant women and work, "Black Foreigners: Identity and Race Consciousness in America," social issues relating to present-day Africa, and her experience as an African teaching at an American college.

B.A. Fourah Bay College, University of Sierra Leone
M.A. University of New Brunswick
Ph.D. Boston College

Social Change

Isa Williams

Assistant Professor of Women's Studies and Director of The Atlanta Semester

As director of Agnes Scott's Atlanta Semester, Williams challenges students to examine women's leadership and contributions to the dynamics of social change, while tapping into the unique resources available only in Atlanta, combining experiential learning with an array of courses and independent research.

B.A. Spelman College
M.A. Georgia State University
Ph.D. Emory University

Social Problems

Yvonne D. Newsome

Assistant Professor of Sociology

A sociologist, Newsome studies racial-ethnic identity, race, class and gender intersections, social problems, sociology of education, transnationalism, political sociology and qualitative research.

B.A. University of Memphis
M.A. University of Memphis
Ph.D. Northwestern University

Sociology

Of Education

Yvonne D. Newsome

Assistant Professor of Sociology

A sociologist, Newsome studies racial-ethnic identity, race, class and gender intersections, social problems, sociology of education, transnationalism, political sociology and qualitative research.

B.A.	University of Memphis
M.A.	University of Memphis
Ph.D.	Northwestern University

Of Work

Brenda A. Hoke

Associate Professor of Sociology

Hoke is Agnes Scott's expert on workplace issues, gender relations and the sociology of work and occupations. Hoke has researched the effects of welfare reform on recipients.

B.A.	North Carolina Central University
M.A.	Atlanta University
M.A.	SUNY at Stony Brook
Ph.D.	SUNY at Stony Brook

**Political Sociology,
Social Problems,
Race, Class and Gender Intersections,
Racial/Ethnic Identity**

Yvonne D. Newsome

Assistant Professor of Sociology

A sociologist, Newsome studies racial-ethnic identity, race, class and gender intersections, social problems, sociology of education, transnationalism, political sociology and qualitative research.

B.A.	University of Memphis
M.A.	University of Memphis
Ph.D.	Northwestern University

Somalia

Catherine V. Scott

Professor of Political Science

Scott has studied political systems in Africa and has also probed hostage crises and U.S. foreign policy (especially with Iran, Persian Gulf states and Somalia) and the gender gap in voting. She has also studied Hillary Rodham Clinton's role in the current administration, paying particular attention to her role in healthcare reform.

B.A.	University of Florida
M.A.	Emory University
Ph.D.	Emory University

Spanish

Civilization

Michael Schlig

Assistant Professor of Spanish

Schlig's expertise is in the literature of 18th, 19th, and early 20th century Spain. He has also taught Spanish civilization and Mexican American culture. His research focuses on literary aesthetics with a special interest in the mirror as a metaphor of artistic representation.

B.A.	Dickinson College
M.A.	Middlebury College
Ph.D.	University of Texas at Austin

Linguistics

Anja Bernardy

Visiting Assistant Professor of Spanish

Bernardy's research focuses on applied Spanish linguistics and methods of teaching. Bernardy has also studied the culture shock facing international students and has taught English as a second language.

B.S.	University of Oklahoma
B.A.	University of Oklahoma
M.A.	University of Oklahoma
Ph.D.	University of Pittsburgh

Literature

Michael Schlig

Assistant Professor of Spanish

Schlig's expertise is in the literature of 18th, 19th, and early 20th century Spain. He has also taught Spanish civilization and Mexican American culture. His research focuses on literary aesthetics with a special interest in the mirror as a metaphor of artistic representation.

B.A.	Dickinson College
M.A.	Middlebury College
Ph.D.	University of Texas at Austin

Methods of teaching

Anja Bernardy

Visiting Assistant Professor of Spanish

Bernardy's research focuses on applied Spanish linguistics and methods of teaching. Bernardy has also studied the culture shock facing international students and has taught English as a second language.

B.S.	University of Oklahoma
B.A.	University of Oklahoma
M.A.	University of Oklahoma
Ph.D.	University of Pittsburgh

Sports

A. Page Remillard

Director of Athletics

With more than 20 years experience as a coach and administrator at NCAA division III schools, Remillard is a former member of NCAA rules committees (water polo and swimming) and NCAA women's softball championship committee. He has also coached extensively, including U.S. Olympic Festival water polo teams. He is available to comment on collegiate, Olympic and professional sports, gender equity, Title IX, personal fitness and "Men's Roles in Women's Athletics."

B.S.	California State Polytechnic University, Pomona
M.A.	University of La Verne

Southeast Asia

Penelope Campbell
Charles A. Dana Professor of History

Campbell is a historian of Sub-Saharan Africa, India, and Southeast Asia. She looks at politics and international tensions. She also studies environmental degradation and Vietnam since reunification. A native of Maryland, Campbell has researched extensively the interaction throughout history of that state with Africa. She has studied Christian evangelism in Africa and the development and underdevelopment of the continent.

B.A.	Baylor University
M.A.	The Ohio State University
Ph.D.	The Ohio State University

Southern

Artisans

Michele Gillespie
Associate Professor of History

Gillespie's research focuses on gender, race and work in the antebellum South (1800-1860). She is currently editing a book that explores this theme entitled *Neither Lady, Nor Slave: Working Women of the Old South*. She has recently co-edited *The Devil's Lane: Sex and Race in the Early South* (1997) with Catherine Clinton. In addition, she has examined artisans in antebellum southern politics and society in her forthcoming book, *Free Labor in an Unfree World: White Artisans in Slaveholding Georgia* (1999).

B.A.	Rice University
Ph.D.	Princeton University

Dance

Marylin B. Darling
Professor of Dance

Darling's interests range from dance (choreography, criticism, theory and anthropology) and the fine arts to the politics of higher education. She is available to comment on dance as a universal language and dance as a Southern art form. She has published on "Affirmative Action and the Placement of Women in Higher Education."

B.S.	Florida State University
M.M.	Florida State University
Ph.D.	Georgia State University

Gender, Race and Work in Antebellum South, History of Women

Michele Gillespie
Associate Professor of History

Gillespie's research focuses on gender, race and work in the antebellum South (1800-1860). She is currently editing a book that explores this theme entitled *Neither Lady, Nor Slave: Working Women of the Old South*. She has recently co-edited *The Devil's Lane: Sex and Race in the Early South* (1997) with Catherine Clinton. In addition, she has examined artisans in antebellum southern politics and society in her forthcoming book, *Free Labor in an Unfree World: White Artisans in Slaveholding Georgia* (1999).

B.A.	Rice University
Ph.D.	Princeton University

Literature

Linda L. Hubert
Professor of English

Hubert is a specialist in American literature with a noted interest in theatre. She has researched extensively Southern literature, especially Southern women playwrights, American realism and naturalism as well as contemporary drama. She also speaks to "anything Irish."

The author of Agnes Scott's first graduate program M.A.T. in Secondary English, she remains focused on the importance of training first rate English teachers.

B.A.	Agnes Scott College
M.A.	Emory University
Ph.D.	Emory University

Politics

Augustus B. Cochran, III
Professor of Political Science

Both an political scientist and a lawyer, Cochran specializes in labor law and labor law reform. He is interested in employee participation in management and issues of democracy at work. He also studies changing Southern politics and its influence on American democracy and the realignment of U.S. politics over the course of the last 30 years. Cochran has given talks on "How to Think Like a Lawyer" and "Rights at Work."

B.A.	Davidson College
M.A.	Indiana University

Ph.D. University of North Carolina
J.D. Georgia State University College of Law

Study Abroad

Maria Krane

Director of International Education and Assistant Professor of Education

As the first director of Agnes Scott's Office of International Education, Krane brings to the position extensive teaching and administrative experience. Krane has taught linguistics, English as a foreign language, and cross-cultural communication in her native Brazil and in the U.S. She has published and presented her research on different aspects of internationalization, especially study abroad and exchanges, in higher education at national and international conferences.

B.A. Universidade Federal de Santa Maria (Brazil)
Licenciado
em Letras Universidade Federal de Santa Maria (Brazil)
M.A.T. Indiana University
Ed.D. Mississippi State University

Technology in the Classroom

Lawrence H. Riddle

Associate Professor of Mathematics

Riddle and his math students have created a web site on women mathematicians, the most extensive of its kind (www.agnesscott.edu/lriddle/women/women.htm). Riddle, who has been interviewed on National Public Radio's *51 Percent* and whose web site has been featured in several articles, is also an excellent source on the use of technology in the classroom.

B.S. Carnegie-Mellon University
M.S. University of Illinois
Ph.D. University of Illinois

Julie Weisberg

Associate Professor of Education

Weisberg, a former high school chemistry teacher, studies technology in the classroom and directs the teacher education program. She is also associate director of the Global Thinking Project, which encourages American and Russian students to collaborate, through the Internet, on solving environmental questions.

B.S. Tufts University
M.Ed. Emory University
Ph.D. University of North Carolina

Television Violence

David P. Cornell

Visiting Assistant Professor of Psychology

Television violence, especially its affects on children, children's emotional intelligence and early child brain development and stimulation are among Cornell's specialties. In the past, he has given workshops to day care centers on brain development, emotional intelligence and television violence. He also has interests in the area of personality, emotions and health.

B.S. Eastern Kentucky University

M.S. University of Georgia

Ph.D. University of Georgia

Theatre

**American Drama,
Criticism,
Pedagogy**

David S. Thompson

Associate Professor of Theatre

Thompson is an expert on major and award-winning women playwrights; his 1997 dissertation studied "Merit and Mythos: A Study of Major Dramatic Prizes Awarded Plays by Women Playwrights." He is a theatre theorist and critic and also researches American drama and the pedagogy of theatre.

B.A. University of Tennessee

M.F.A. University of Tennessee

Ph.D. University of Texas at Austin

Playwriting

Linda L. Hubert

Professor of English

Hubert is a specialist in American literature with a noted interest in theatre. She has researched extensively Southern literature, especially Southern women playwrights, American realism and naturalism as well as contemporary drama. She also speaks to "anything Irish."

The author of Agnes Scott's first graduate program M.A.T. in Secondary English, she remains focused on the importance of training first rate English teachers.

B.A. Agnes Scott College

M.A. Emory University

Ph.D. Emory University

Dudley W. Sanders

Associate Professor of Theatre

Sanders serves as the set, costume and lighting designer for the Theatre Program and for the student theatre troupe, Blackfriars. He also teaches playwriting and screenwriting. His play "Maggie and the Bird Go Fishing" has enjoyed almost two dozen productions around the country, and he is represented as a screenwriter by ICM.

A.B. Kenyon College
M.F.A. Northwestern University

David S. Thompson

Associate Professor of Theatre

Thompson is an expert on major and award-winning women playwrights; his 1997 dissertation studied "Merit and Mythos: A Study of Major Dramatic Prizes Awarded Plays by Women Playwrights." He is a theatre theorist and critic and also researches American drama and the pedagogy of theatre.

B.A. University of Tennessee
M.F.A. University of Tennessee
Ph.D. University of Texas at Austin

Set Design

Dudley W. Sanders

Associate Professor of Theatre

Sanders serves as the set, costume and lighting designer for the Theatre Program and for the student theatre troupe, Blackfriars. He also teaches playwriting and screenwriting. His play "Maggie and the Bird Go Fishing" has enjoyed almost two dozen productions around the country, and he is represented as a screenwriter by ICM.

A.B. Kenyon College
M.F.A. Northwestern University

Women Playwrights

Linda L. Hubert

Professor of English

Hubert is a specialist in American literature with a noted interest in theatre. She has researched extensively Southern literature, especially Southern women playwrights, American realism and naturalism as well as contemporary drama. She also speaks to "anything Irish." The author of Agnes Scott's first graduate program M.A.T. in Secondary English, she remains focused on the importance of training first rate English teachers.

B.A. Agnes Scott College

M.A. Emory University
Ph.D. Emory University

David S. Thompson

Associate Professor of Theatre

Thompson is an expert on major and award-winning women playwrights; his 1997 dissertation studied "Merit and Mythos: A Study of Major Dramatic Prizes Awarded Plays by Women Playwrights." He is a theatre theorist and critic and also researches American drama and the pedagogy of theatre.

B.A. University of Tennessee
M.F.A. University of Tennessee
Ph.D. University of Texas at Austin

Peggy Thompson

Associate Professor of English

Thompson teaches and writes about Restoration and eighteenth-century literature. She has also published on the theoretical relationships between comedy and Christianity. She is also a winner of the Vulcan Materials Company Teaching Excellence Award.

B.A. Arizona State University
M.A. (Philosophy) Emory University
M.A. (Humanities) Arizona State University
M.A. (English) Indiana University
Ph.D. Indiana University

Title IX

A. Page Remillard

Director of Athletics

With more than 20 years experience as a coach and administrator at NCAA division III schools, Remillard is a former member of NCAA rules committees (water polo and swimming) and NCAA women's softball championship committee. He has also coached extensively, including U.S. Olympic Festival water polo teams. He is available to comment on collegiate, Olympic and professional sports, gender equity, Title IX, personal fitness and "Men's Roles in Women's Athletics."

B.S. California State Polytechnic University, Pomona
M.A. University of La Verne

Town/Gown Relations

Mary Brown Bullock

President of the College and Professor of History

Bullock serves on the Board of Directors of the National Committee for U.S.-China Relations, the Board of the Council for International Exchange of Scholars (the Fulbright board) and is a member of the Council for Foreign Relations and the Visiting Committee/East Asian Studies at Harvard University. Additionally, Bullock is a trustee of the United Board for Christian Higher Education in Asia and the China Medical Board of New York. She also serves on The Carter Center Board of Councilors and the Board of Directors of SunTrust Bank, Atlanta.

She speaks to issues involving China and its history, single sex (women's) education, liberal arts education, higher education in general and town/gown relations.

B.A.	Agnes Scott College
M.A.	Stanford University
Ph.D.	Stanford University

Gué P. Hudson

Vice President for Student Life and Community Relations and Dean of Students

As Agnes Scott's dean of students and vice president of community relations, Hudson stays in close contact with debates about student and enrollment issues as well as town/gown relations. She is well versed in the dynamics of the College's Honor System, considered one of the best functioning in the country. She has also taught mathematics in elementary, middle and secondary schools. She is especially interested in teaching young girls mathematics.

B.A.	Agnes Scott College
M.A.T.	Emory University

Transnationalism

Yvonne D. Newsome

Assistant Professor of Sociology

A sociologist, Newsome studies racial-ethnic identity, race, class and gender intersections, social problems, sociology of education, transnationalism, political sociology and qualitative research.

B.A.	University of Memphis
M.A.	University of Memphis
Ph.D.	Northwestern University

Feng Xu

Assistant Professor of Political Science

In the past three years, Xu's research has been on China's economic reform and women migrant workers in China. This year, she is teaching "Introduction to World Politics," "Issues in Global Migration," and "Approaches to International Relations." Her general academic interests are international relations, women's studies, Asian studies, migration studies, nationalism and transnationalism.

B.A.	Beijing Foreign Languages Institute
M.A.	York University
Ph.D.	York University

Travel Abroad

Maria Krane

Director of International Education and Assistant Professor of Education

As the first director of Agnes Scott's Office of International Education, Krane brings to the position extensive teaching and administrative experience. Krane has taught linguistics, English as a foreign language, and cross-cultural communication in her native Brazil and in the U.S. She has published and presented her research on different aspects of internationalization, especially study abroad and exchanges, in higher education at national and international conferences.

B.A.	Universidade Federal de Santa Maria (Brazil)
Licenciado em Letras	Universidade Federal de Santa Maria (Brazil)
M.A.T.	Indiana University
Ed.D.	Mississippi State University

Vietnam

Penelope Campbell

Charles A. Dana Professor of History

Campbell is a historian of Sub-Saharan Africa, India, and Southeast Asia. She looks at politics and international tensions. She also studies environmental degradation and Vietnam since reunification. A native of Maryland, Campbell has researched extensively the interaction throughout history of that state with Africa. She has studied Christian evangelism in Africa and the development and underdevelopment of the continent.

B.A.	Baylor University
M.A.	The Ohio State University
Ph.D.	The Ohio State University

Visual Art

Book Art, Dalton Galleries

Anne E. Beidler

Associate Professor of Art

Beidler is both a printmaker and studio art teacher whose work has been exhibited widely including exhibitions at Wellesley College, the Kennedy Museum of Art at Ohio University and the Flaxman Library of the School of the Art Institute of Chicago. She also specializes in artists' books and coordinates the exhibitions in Agnes Scott's Dalton Galleries.

B.A.	Earlham College
B.F.A.	University of Connecticut
M.F.A.	University of Massachusetts, Amherst

Drawing, Multimedia (three dimensional), Painting

Terry S. McGehee

Professor of Art

McGehee is a studio artist with interests that range from two-dimensional work, such as painting and drawing, to three-dimensional multimedia work. She has exhibited in numerous shows including "LaGrange National XVI Sculpture and Painting Exhibition" and "Arts Faculty in the Liberal Arts Tradition." Her work is in collections including those of HRH Princess Wijdan Ali of Jordan, Cox Broadcasting Corporation, Georgia Pacific Corporation and the Richard B. Russell United States Federal Building.

B.A.	Queen's College
M.F.A.	Washington University (St. Louis)

Printmaking

Anne E. Beidler

Associate Professor of Art

Beidler is both a printmaker and studio art teacher whose work has been exhibited widely including exhibitions at Wellesley College, the Kennedy Museum of Art at Ohio University and the Flaxman Library of the School of the Art Institute of Chicago. She also specializes in artists' books and coordinates the exhibitions in Agnes Scott's Dalton Galleries.

B.A.	Earlham College
B.F.A.	University of Connecticut
M.F.A.	University of Massachusetts, Amherst

Welfare Reform

Brenda A. Hoke

Associate Professor of Sociology

Hoke is Agnes Scott's expert on workplace issues, gender relations and the sociology of work and occupations. Hoke has researched the effects of welfare reform on recipients.

B.A.	North Carolina Central University
M.A.	Atlanta University
M.A.	SUNY at Stony Brook
Ph.D.	SUNY at Stony Brook

Women

African-American Women Novelists

Willie Tolliver

Assistant Professor of English

An aficionado of 19th-century American literature and the work of Henry James, Tolliver is also well versed in African-American literature and film. While at Agnes Scott, he has taught African-American literature, African-American women novelists and nineteenth century American fiction.

B.A.	Williams College
M.A.	University of Chicago
Ph.D.	University of Chicago

In the Antebellum South

Michele Gillespie

Associate Professor of History

Gillespie's research focuses on gender, race and work in the antebellum South (1800-1860). She is currently editing a book that explores this theme entitled *Neither Lady, Nor Slave: Working Women of the Old South*. She has recently co-edited *The Devil's Lane: Sex and Race in the Early South* (1997) with Catherine Clinton. In addition, she has examined artisans in antebellum southern politics and society in her forthcoming book, *Free Labor in an Unfree World: White Artisans in Slaveholding Georgia* (1999).

B.A.	Rice University
Ph.D.	Princeton University

In Antiquity

Gail Cabisius

Associate Professor of Classical Languages and Literatures

Director of Women's Studies from 1995 to 1998, Cabisius has a strong interest in women in antiquity and lesbian and gay studies. Her main academic expertise is in the literature and history of Rome, especially in the period of the late Republic and early Empire. She has published on the Latin philosophical poet Lucretius.

B.A.	Smith College
M.P.A.	Georgia State University
M.A.	Bryn Mawr College
Ph.D.	Bryn Mawr College

Sally MacEwen

Associate Professor of Classical Languages and Literatures

MacEwen has expanded her classics research to include the history of ideas (especially honesty, heroism and diversity), ancient women and female heroes in the movies. She is also one of Agnes Scott's leaders in multicultural issues and helps lead the College's chapter of the National Coalition Building Institute.

B.A.	Mount Holyoke College
Ph.D.	University of Pennsylvania

In Art and Advertising

Donna Sadler

Associate Professor of Art

Sadler specializes in Gothic cathedrals and the role of women in art and advertising. She works on questions of patronage and piety in the art works commissioned by Louis IX and Philip the Bold. She charts the differences between the pious propaganda of the Capetian monarch and the politically savvy monuments associated with the Valois duke.

B.A.	Boston University
M.A.	Indiana University
Ph.D.	Indiana University

Biology Curricula for Women

John F. Pilger

Professor of Biology

Pilger's research focuses on cell biology, reproduction and the development and metamorphosis of marine invertebrates. He has published articles on invertebrate reproduction and development and has contributed to research on microscopic anatomy of invertebrates. He is also interested in new biology curricula for women.

B.S. University of Southern California
Ph.D. University of Southern California

Composers

Calvert Johnson
Professor of Music

Early keyboard music is Johnson's specialty, especially that of Spain, Italy and England. He has widely performed and lectured on early keyboard music and its performance practices at colleges and for numerous chapters of the American Guild of Organists. His other interest is keyboard music by women composers. He has performed concerts of this repertoire throughout the country and is currently engaged in research on 18th century keyboard music by English and French women.

B.A. Kalamazoo College
M.M. Northwestern University
D.M. Northwestern University

And Creativity

Gail Cabisius
Associate Professor of Classical Languages and Literatures

Director of Women's Studies from 1995 to 1998, Cabisius has a strong interest in women in antiquity and lesbian and gay studies. Her main academic expertise is in the literature and history of Rome, especially in the period of the late Republic and early Empire. She has published on the Latin philosophical poet Lucretius.

B.A. Smith College
M.P.A. Georgia State University
M.A. Bryn Mawr College
Ph.D. Bryn Mawr College

Female Heroes in Film

Sally MacEwen
Associate Professor of Classical Languages and Literatures

MacEwen has expanded her classics research to include the history of ideas (especially honesty, heroism and diversity), ancient women and female heroes in the movies. She is also one of Agnes Scott's leaders in multicultural issues and helps lead the College's chapter of the National Coalition Building Institute.

B.A. Mount Holyoke College
Ph.D. University of Pennsylvania

Gender Equity in Science Education

Julie Weisberg

Associate Professor of Education

Weisberg, a former high school chemistry teacher, studies technology in the classroom and directs the teacher education program. She is also associate director of the Global Thinking Project, which encourages American and Russian students to collaborate, through the Internet, on solving environmental questions.

B.S.	Tufts University
M.Ed.	Emory University
Ph.D.	University of North Carolina

Gender Gap in Voting

Catherine V. Scott

Professor of Political Science

Scott has studied political systems in Africa and has also probed hostage crises and U.S. foreign policy (especially with Iran, Persian Gulf states and Somalia) and the gender gap in voting. She has also studied Hillary Rodham Clinton's role in the current administration, paying particular attention to her role in healthcare reform.

B.A.	University of Florida
M.A.	Emory University
Ph.D.	Emory University

Gender Issues in Math Education

Myrtle H. Lewin

Professor of Mathematics

Lewin teaches and studies mathematics, the learning and teaching of mathematics and gender issues in mathematics education. She has an interest in abstract geometries and the relationship between learning theories (such as social constructivism) and teaching methodologies (such as collaborative learning).

B.Sc.	University of the Witwatersrand, Johannesburg
B.Sc.Hons	University of the Witwatersrand, Johannesburg
M.A.	University of Wisconsin
Ph.D.	University of Wisconsin

Immigrant Women and Work

Violet M. Johnson

Associate Professor of History

A native of Sierra Leone, Africa, Johnson has researched immigrant women and work, "Black Foreigners: Identity and Race Consciousness in America," social issues relating to present-day Africa, and her experience as an African teaching at an American college.

B.A. Fourah Bay College, University of Sierra Leone
M.A. University of New Brunswick
Ph.D. Boston College

And Investing

Rosemary T. Cunningham

Professor of Economics

Cunningham has been a leader in the teaching of economics and investments to women. She has written a software package for her investments class and studies gender differences in investing. She is well informed about stock markets, gender differences in investing and the Federal Reserve. Cunningham has also worked with women entrepreneurs, placing student interns with them as part of a program with funds from the Kauffman Foundation.

B.A. Fordham University
M.A. Fordham University
Ph.D. Fordham University

History of (1400-1800)

Michael R. Lynn

Assistant Professor of History

Lynn is a scholar of the history of the Enlightenment, especially in 18th century Paris, but he can also comment on French history, the history of Early Modern England, the Renaissance, the Reformation, history of science and the history of women (1400-1800). His dissertation (August 1997) studied "Enlightenment in the Republic of Science: The Popularization of Natural Philosophy in Eighteenth-Century Paris."

B.A. Pacific Lutheran University
B.S. Pacific Lutheran University
M.A. University of Wisconsin-Madison
Ph.D. University of Wisconsin-Madison

History of European Women

Katharine D. Kennedy

Associate Professor of History

Chair of Agnes Scott's Women's Studies Program, Kennedy's main research interest is the history of German education. She is a modern European history scholar, especially the history of European women. She has taught classes on Women in Modern European History, Europe in the Victorian Era, Europe (1914-45), Europe Since 1945, the Holocaust and Russia and the Soviet Union in the 20th century. Her research interests include education and formation of German national identity in the 19th and 20th-centuries.

B.A.	Duke University
M.A.	Stanford University
Ph.D.	Stanford University

History of Southern Women

Michele Gillespie

Associate Professor of History

Gillespie's research focuses on gender, race and work in the antebellum South (1800-1860). She is currently editing a book that explores this theme entitled *Neither Lady, Nor Slave: Working Women of the Old South*. She has recently co-edited *The Devil's Lane: Sex and Race in the Early South* (1997) with Catherine Clinton. In addition, she has examined artisans in antebellum southern politics and society in her forthcoming book, *Free Labor in an Unfree World: White Artisans in Slaveholding Georgia* (1999).

B.A.	Rice University
Ph.D.	Princeton University

In Latin America

Juan A. Allende

Associate Professor of Political Science

Allende is a specialist in the politics of Chile as well as of Latin American studies in general. He teaches Latin American Studies and politics, women in Latin America and U.S.-Latin Relations. He is also interested in the interaction of the church and politics in Latin America.

B.S.	Iowa State University
M.S.	University of North Carolina
M.Div.	Emory University
Ph.D.	University of North Carolina

Rafael Ocasio

Associate Professor of Spanish

Ocasio is an expert in Latin American literature, especially Cuban literature. The literature of Latina women is also one of his interests. Additionally, Ocasio has studied contemporary Latin American politics.

B.A.	University of Puerto Rico
M.A.	Eastern New Mexico University
Ph.D.	University of Kentucky

Martha Rees

Associate Professor of Anthropology

Rees is a social anthropologist specializing in household economics in Mexico and among Mexican immigrants to the United States. She completed her dissertation in anthropology at the University of Colorado at Boulder on land tenure conflicts with the expansion of Mexico City into surrounding rural areas. She is also interested in women and science, gender/race and IQ, NAFTA and Atlanta's immigrants.

Rees has had support from the National Science Foundation and held a Fulbright lectureship. She won in 1998 a National Science Foundation grant to further her research. She has worked in Mexico for more than 15 years, working in the National University, the National Indigenist Institute, the Metropolitan University and the Center for Ecodevelopment. She carried out research in many areas of Mexico.

B.A.	University of Colorado
M.A.	University of Colorado
Ph.D.	University of Colorado

And Literature

Christine S. Cozzens

Associate Professor of English

Cozzens' research and writing interests include all aspects of writing and writing pedagogy, nonfiction as a genre of creative writing (the personal essay, the memoir), travel writing (history and current), journalism, 19th-century British literature (especially fiction), Irish history and literature (including contemporary topics), women and literature (especially women, literature and social change, war) and training teachers of secondary English.

B.A.	Stanford University
M.A.	Stanford University
Ph.D.	University of California, Berkeley

Mathematicians

Lawrence H. Riddle

Associate Professor of Mathematics

Riddle and his math students have created a web site on women mathematicians, the most extensive of its kind (www.agnesscott.edu/lriddle/women/women.htm). Riddle, who has been interviewed on National Public Radio's *51 Percent* and whose web site has been featured in several articles, is also an excellent source on the use of technology in the classroom.

B.S.	Carnegie-Mellon University
M.S.	University of Illinois
Ph.D.	University of Illinois

Playwrights

Linda L. Hubert

Professor of English

Hubert is a specialist in American literature with a noted interest in theatre. She has researched extensively Southern literature, especially Southern women playwrights, American realism and naturalism as well as contemporary drama. She also speaks to "anything Irish."

The author of Agnes Scott's first graduate program M.A.T. in Secondary English, she remains focused on the importance of training first rate English teachers.

B.A.	Agnes Scott College
M.A.	Emory University
Ph.D.	Emory University

David S. Thompson

Associate Professor of Theatre

Thompson is an expert on major and award-winning women playwrights; his 1997 dissertation studied "Merit and Mythos: A Study of Major Dramatic Prizes Awarded Plays by Women Playwrights." He is a theatre theorist and critic and also researches American drama and the pedagogy of theatre.

B.A.	University of Tennessee
M.F.A.	University of Tennessee
Ph.D.	University of Texas at Austin

Peggy Thompson

Associate Professor of English

Thompson teaches and writes about Restoration and eighteenth-century literature. She has also published on the theoretical relationships between comedy and Christianity. She is also a winner of the Vulcan Materials Company Teaching Excellence Award.

B.A.	Arizona State University
M.A. (Philosophy)	Emory University
M.A. (Humanities)	Arizona State University
M.A. (English)	Indiana University
Ph.D.	Indiana University

Race, Class and Gender Intersections

Yvonne D. Newsome

Assistant Professor of Sociology

A sociologist, Newsome studies racial-ethnic identity, race, class and gender intersections, social problems, sociology of education, transnationalism, political sociology and qualitative research.

B.A.	University of Memphis
M.A.	University of Memphis
Ph.D.	Northwestern University

And Religion

Tina Pippin

Associate Professor of Religious Studies

Pippin's research is in religion and culture (cultural studies). Primarily, she reads biblical texts in their postmodern contexts, especially apocalyptic literature and cultures. She is the author of *Death and Desire: The Rhetoric of Gender in the Apocalypse of John* (Westminster/John Knox, 1992), one of the co-authors of *The Postmodern Bible* (Yale University Press, 1995), author of the forthcoming (Feb. 1999) *Apocalyptic Bodies: The Biblical End of the World in Text and Image* (Routledge Press) and editor of several volumes of the Bible and the literary fantastic.

Pippin also teaches and writes in women's studies and is one of the co-founders of Creating Links Among Activist Scholars and People, CLAASP, an activist educator group.

B.A.	Mars Hill College
M.Div.	Candler School of Theology
M.Th.	Southern Baptist Theological Seminary
Ph.D.	Southern Baptist Theological Seminary

And Science

Linda Hodges

William Rand Kenan Professor of Chemistry and Director of Atlanta Science Center for Women

Director of Agnes Scott's Atlanta Science Center for Women, Hodges heads the program designed to encourage women to excel in the sciences. Hodges, a biochemist, conducts

applied research on both anti-glaucoma agents in tobacco and anti-cancer agents in broccoli.

B.S. Centre College
Ph.D. University of Kentucky

Teaching Young Girls Mathematics

Gué P. Hudson

Vice President for Student Life and Community Relations and Dean of Students

As Agnes Scott's dean of students and vice president of community relations, Hudson stays in close contact with debates about student and enrollment issues as well as town/gown relations. She is well versed in the dynamics of the College's Honor System, considered one of the best functioning in the country. She has also taught mathematics in elementary, middle and secondary schools. She is especially interested in teaching young girls mathematics.

B.A. Agnes Scott College
M.A.T. Emory University

Title IX

A. Page Remillard

Director of Athletics

With more than 20 years experience as a coach and administrator at NCAA division III schools, Remillard is a former member of NCAA rules committees (water polo and swimming) and NCAA women's softball championship committee. He has also coached extensively, including U.S. Olympic Festival water polo teams. He is available to comment on collegiate, Olympic and professional sports, gender equity, Title IX, personal fitness and "Men's Roles in Women's Athletics."

B.S. California State Polytechnic University, Pomona
M.A. University of La Verne

Women, Leadership and Social Change

Isa Williams

Assistant Professor of Women's Studies and Director of The Atlanta Semester

As director of Agnes Scott's Atlanta Semester, Williams challenges students to examine women's leadership and contributions to the dynamics of social change, while tapping into the unique resources available only in Atlanta, combining experiential learning with an array of courses and independent research.

B.A. Spelman College
M.A. Georgia State University

Ph.D. Emory University

Women's Education

Mary Brown Bullock

President of the College and Professor of History

Bullock serves on the Board of Directors of the National Committee for U.S.-China Relations, the Board of the Council for International Exchange of Scholars (the Fulbright board) and is a member of the Council for Foreign Relations and the Visiting Committee/East Asian Studies at Harvard University. Additionally, Bullock is a trustee of the United Board for Christian Higher Education in Asia and the China Medical Board of New York. She also serves on The Carter Center Board of Councilors and the Board of Directors of SunTrust Bank, Atlanta.

She speaks to issues involving China and its history, single sex (women's) education, liberal arts education, higher education in general and town/gown relations.

B.A. Agnes Scott College
M.A. Stanford University
Ph.D. Stanford University

World Politics

Feng Xu

Assistant Professor of Political Science

In the past three years, Xu's research has been on China's economic reform and women migrant workers in China. This year, she is teaching "Introduction to World Politics," "Issues in Global Migration," and "Approaches to International Relations." Her general academic interests are international relations, women's studies, Asian studies, migration studies, nationalism and transnationalism.

B.A. Beijing Foreign Languages Institute
M.A. York University
Ph.D. York University

Writing

Fiction

Bona W. Ball

Ellen Douglas Leyburn Professor of English

Ball, a Shakespeare scholar, has been a primary force behind Agnes Scott's Writers' Festival since its inception more than 25 years ago. In addition to teaching literature, Ball is the College's fiction writing specialist; he is the winner of three Pushcart Prizes.

B.A. University of Virginia
M.A.T. Duke University
Ph.D. University of Kentucky

**Journalism,
Pedagogy,
Travel**

Christine S. Cozzens

Associate Professor of English

Cozzens' research and writing interests include all aspects of writing and writing pedagogy, nonfiction as a genre of creative writing (the personal essay, the memoir), travel writing (history and current), journalism, 19th-century British literature (especially fiction), Irish history and literature (including contemporary topics), women and literature (especially women, literature and social change, war) and training teachers of secondary English.

B.A. Stanford University
M.A. Stanford University
Ph.D. University of California, Berkeley

INDEX

By Source

Abbot	40, 74
Allende	13, 45, 47, 93
Ames	27, 49, 54
Ball	55
Behan	15, 68, 69, 70
Beidler	87
Bernardy	16, 26, 77, 78
Blatchley	17, 72
Bowden	3
Bowling	67, 71
Bullock	14, 29, 34, 36, 85, 98
Byrnside	62, 63
Cabisius	37, 89, 90
Campbell	1, 3, 36, 42, 79, 86
Carden	16, 41, 73
Cochran	44, 80
Cooley	71, 72, 73
Cornell	72, 82
Cozzens	25, 39, 43, 49, 52, 94, 99
Cunningham	18, 19, 30, 92
Darling	17, 35, 79
De Pree, C.	5
De Pree, J.	29, 51
Froelich	26, 60
Gibson	3, 6, 8, 9
Gillespie	40, 79, 80, 88, 93
Guthrie	26, 53
Harvey	12
Hazelbauer-Von der Ohe	1, 15
Hodges	5, 97

Hoke	31, 76, 88
Hubert	43, 49, 50, 52, 55, 80, 82, 83, 95
Hudson	23, 42, 85, 97
Johnson, C.	63, 65, 90
Johnson, V.	2, 15, 28, 36, 75, 92
Kain	7, 8, 10, 56
Kennedy	22, 32, 38, 93
Khwaja	53, 54, 55, 56, 67
Krane	11, 21, 34, 81, 86
Leslie	47, 48, 57, 67
Lewin	23, 35, 58, 91
Lucas	17, 72, 73
Lynn	30, 37, 38, 39, 40, 41, 69, 92
MacEwen	17, 27, 33, 37, 39, 41, 89, 90
Martin	19, 20
Mathews	23, 61, 62, 63, 64, 65
McGehee	87
Newsome	75, 76, 85, 96
Norat	1, 44, 45
Ocasio	45, 46, 48, 51, 53, 94
Parry	11, 20, 32, 69, 70
Pilger	6, 9, 10, 20, 89
Pinka	27, 51
Pippin	61, 74, 96
Rees	4, 19, 46, 47, 60, 66, 94
Remillard	28, 66, 78, 84, 98
Riddle	57, 59, 81, 95
Robinson	58
Rollo	30, 51
Sadler	4, 11, 89
Sanders	28, 83

Schenbeck	62, 64, 65
Schlig	46, 53, 56, 60, 77, 78
Scott	2, 29, 31, 43, 68, 77, 91
Sheehey	18, 33
Thompson, D.	82, 83, 84, 95
Thompson, K.	9, 10
Thompson, P.	34, 50, 54, 84, 95
Tolliver	27, 48, 49, 88
Venable	4, 12, 13, 68
Weisberg	22, 25, 32, 81, 91
West	13, 21, 24
Wieshofer	22, 31, 44, 52
Williams	5, 75, 97
Wistrand	6, 7, 8
Xu	14, 42, 66, 86, 98
Yiparaki	35, 57, 58, 59

By Subject

Accounting	1
African	1
Agriculture	3
Amino Acids and Copper	4
Anthropology	4
Art History	5
Astronomy	5
Atlanta Semester	5
Biochemistry	5
Biology	6
Brazil	11
Cathedrals	11
Character Education	11
Chemistry	12
Chile	13
Children's Literature	13
China	14
Closely-held Businesses	15
Concept of Self	15
Cross-cultural	15
Cuba	16
Dance	17
Depression	17
Diversity	17
Dual-Career Couples	17
Economics	18
Education	20
English	26
Film	27
Fitness	28
Foreign Policy	28

French	29
Gender Gap	30
Gender Relations	31
German Studies	32
Global Thinking Project	32
Greek Philosophy	32
Heroism	33
Higher Education	33
History	36
Homesickness	41
Honesty	42
Honor Code	42
India	42
International Relations	42
Iran	43
Ireland	43
Labor Law	44
Language Across the Curriculum	44
Latin American Studies	44
Literature	48
Lyme Disease	56
Mathematics	57
Mentoring Teachers	60
Mexico	60
Millennium/Apocalypse	61
Music	61
NAFTA	66
NCAA	66
Nationalism	66
Nicaragua	67
Nuclear Arms	67
Pakistan	67
Persian Gulf	68

Personal Identity, Problem of	68
Pharmaceuticals, Site-Specific	68
Philosophy	69
Physics	71
Psychology	71
Religion	74
Roman History	74
Sierra Leone	75
Social Change	75
Social Problems	75
Sociology	76
Somalia	77
Spanish	77
Sports	78
Southeast Asia	79
Southern	79
Study Abroad	81
Technology in the Classroom	81
Television Violence	82
Theatre	82
Title IX	84
Town/Gown Relations	85
Transnationalism	85
Travel Abroad	86
Vietnam	86
Visual Art	87
Welfare Reform	88
Women	88
Women, Leadership and Social Change	97
Women's Education	98
World Politics	98
Writing	98