

AGNES SCOTT COLLEGE, DECATUR, GEORGIA

presents

A retrospective exhibition of the work of

Ferdinand Warren

May 4 - June 8, 1969

Opening reception 2 - 5 P.M. Sunday, May 4th

The Dalton Galleries

Dana Fine Arts Building

Galleries open weekdays 9-5
Sunday 2-5

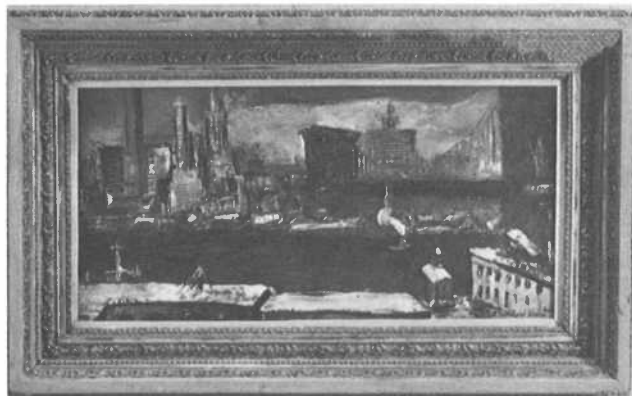
FERDINAND WARREN, N.A.

The career of Ferdinand Warren testifies to the deep and abiding influence of a man who is more than an excellent painter, but also a strong influence for good in the cultural life of the community. During his long tenure at Agnes Scott College, Ferdinand Warren has contributed mightily to the development of a body of alumnae who have a genuine understanding of art, both as appreciators and creators. He played a major role in the establishment of the superb Dana Fine Arts Building for the display and teaching of art at Agnes Scott. He has made his contribution to the academic status of art instruction in an excellent liberal arts college; he has communicated to his students the importance of beauty, harmony and proportion in the life of any cultivated person.

The institutions of the South are richer for his labors in our vineyard. Mr. Warren's retirement does not mark the end of his service to art in this region because he will continue to create, to teach and to inspire.

Lamar Dodd
Regents Professor of Art
University of Georgia





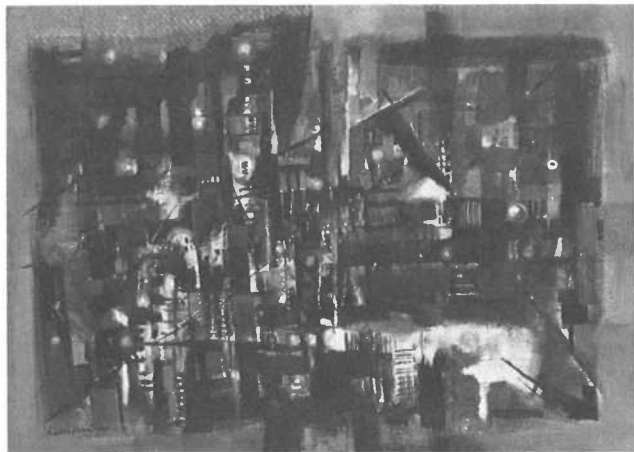
LOWER MANHATTAN

1944



WHAT HAPPENED, GEORGE?

1968



CITY MAGIC

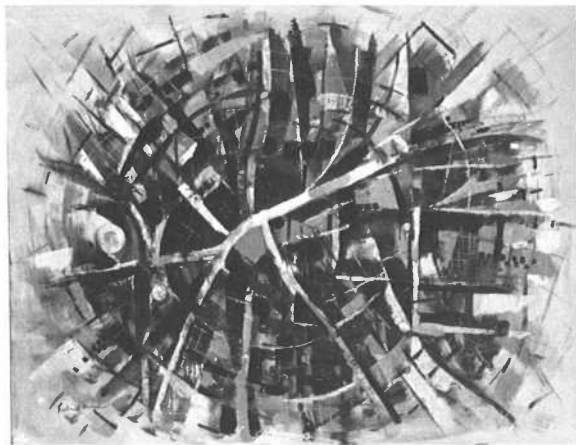
1969

1. **WATERFRONT, 1928**
oil, 22 x 30 inches
2. **MONTAUK LIGHTHOUSE, 1935**
oil, 28 x 36 inches
3. **SLEDDING, 1939**
oil, 28 x 42
4. **DAD, 1939**
oil, 36 x 28
5. **SUMMERTIME, 1940**
oil, 22 x 30 inches
6. **THE HUNTER, 1942**
oil, 12 x 16 inches
7. **HARBOR LIGHTS**
oil, 22 x 30 inches
8. **LITTLE FARM, 1943**
oil, 18 x 24 inches
9. **LOWER MANHATTAN, 1944**
oil, 15 x 28 inches
10. **GATEWAY TO GOTHAM, 1945**
oil, 28 x 36 inches
11. **HEAD, 1945**
oil, 8 x 10 inches
12. **THE YELLOW CHAIR, 1945**
oil, 26 x 38 inches
13. **SUN AND PINE, 1951**
encaustic, 8 x 10 inches
14. **SUN AND PINE, 1954**
oil, 22 x 30 inches
15. **TOWER OF MAIN, 1956**
oil, 22 x 30 inches
16. **THE ANGRY VOICE, 1959**
oil, 36 x 48 inches
17. **NAUTICAL THEME, 1959**
gouache
18. **STILL LIFE, 1959**
gouache
19. **THE RED CHAIR, 1960**
oil, 36 x 48 inches
20. **RED ABSTRACT, 1960**
monoprint
21. **FRUIT BOWL, 1960**
monoprint

22. **MY CAT STINKY, 1960**
monoprint
23. **HEAD OF CHRIST, 1960**
encaustic, 8 x 6 inches
24. **CLASSIC HEAD, 1952**
encaustic, 16 x 12 inches
25. **KENNEDY CORTEGE, 1963**
monoprint
26. **FALL, 1964**
oil, 48 x 42 inches
27. **GOLDEN CITY, 1966**
oil, 36 x 50 inches
28. **DEEP SUN, 1966**
oil, 46 x 50 inches
29. **CITY THEME, 1966**
oil, 43 x 65 inches
30. **FLOWERS, 1966**
oil, 30 x 20 inches
31. **GRAY DAY, 1966**
ink and wash
32. **JET FLIGHT 594, 1967**
oil, 48 x 50 inches
33. **CHRYSANTHEMUMS, 1967**
oil, 30 x 40 inches
34. **MISSOURI LANDSCAPE, 1967**
oil, 38 x 46 inches
35. **JOHN ADAMS, 1967**
oil, 48 x 36 inches
36. **MAGIC CITY, 1967**
oil, 15 x 30 inches
37. **URBAN TURBULENCE, 1968**
oil, 40 x 50 inches
38. **WHAT HAPPENED, GEORGE?, 1968**
oil, 35 x 33 inches
39. **PAST GLORY, 1968**
oil, 40 x 38 inches
40. **LUNAR DAY, 1968**
oil, 50 x 40 inches
41. **CHRISTINE'S WINDOW, 1969**
oil, 36 x 38 inches
42. **CITY MAGIC, 1969**
oil, 40 x 54 inches

ITEMS IN DISPLAY CASE

43. **GOSPEL BOOK COVER, 1967**
copper enamel on gold leaf
44. **KING, 1957**
enamel on copper
45. **QUEEN, 1957**
enamel on copper
46. **SERMON ON THE MOUNT, 1967**
enamel on copper
47. **ANNUNCIATION, 1967**
enamel on copper



URBAN TURBULENCE



HARBOR LIGHTS

1943



JET FLIGHT 594

1967